

A Service of **Cloverland Electric Cooperative**

September/October 2011

Michigan

COUNTRY LINES



10 **Where Soldiers Come From**

4 Hot Summer,
Hot Topics

5 New Meters More Than
Kilowatt Counters

25 Co-op Officers
Elected

GEOHERMAL ENERGY for your home. *The clean choice!*



**30% TAX CREDIT
AVAILABLE!**

**You could save
up to 80% off your
monthly energy bills!**



We Made the Right Choice

"We are very happy with the geothermal system we had installed. At first we were a bit overwhelmed because it's just so different from what we were used to and were afraid it would be a costly mistake. I became more comfortable with the decision when I read that the EPA published reports saying that geothermal is the most environmentally friendly and energy efficient system available. The average operating cost for heat, hot water and air conditioning is at least a 60 percent savings compared to every other heating system we've used (electric, wood and oil). Now that we have used it for a year, we find the system quiet, comfortable and are experiencing the great savings. Geothermal was the right choice."

— Ira Jones

Visit our website to find out how:

www.GeothermalEnergyMI.com

Editor
Gail Knudtson

Assistant Editor
Cindy Zuker

Publisher
Craig Borr

Editor Emeritus
Mike Buda



12



17



18

DEPARTMENTS

- 6 Readers' Pages**
In-home energy displays, letters, safety
- 18 Home Cooking**
Fresh herbs
- 24 Wolverine Power***
DEQ approves air quality permit
Nancy Tanner
- 26 Marketplace**
Classifieds from readers

COLUMNS

- 9 Comment**
USDA partnership
James Turner
- 14 Gardening**
Mums
Rita Henehan
- 16 Family**
Back-to-school relationship skills
Linda Wacyk
- 20 Outdoors**
Woodcock habitat
Don Ingle
- 22 House & Home**
Efficient heat pumps
James Dulley
- 30 Ramblings**
Road trippin'
Mike Buda

FEATURES

- 10 Where Soldiers Come From**
A Michigan-made film about growing up in a time of war
Gail Knudtson
- 12 Our Energy**
Beyond swirly bulbs
Megan McKoy-Noe
- 17 Michigan-made**
A cover bra for Harleys
Gail Knudtson

Michigan Country Lines, USPS-591-710, is published monthly, except August and December, with periodicals postage paid at Okemos, MI, and additional offices. It is the official publication of the Michigan Electric Cooperative Association, 2859 W. Jolly Rd., Okemos, MI 48864.

Subscriptions are authorized for members of Alger Delta, Cherryland, Cloverland, Great Lakes, HomeWorks Tri-County, Midwest Energy, Ontonagon, Presque Isle, and Thumb electric cooperatives by their boards of directors. Subscriptions are \$6 per year.

Postmaster: send address changes to Country Lines, 2859 W. Jolly Rd., Okemos, MI 48864.

Letters to the editor should be sent to the same address. Phone 517-351-6322. **Email:** knudtson@countrylines.com.

Association officers are **Tony Anderson**, Cherryland, chairman; **Ken Swope**, Midwest Energy, 1st vice chairman; **Robert Schallip**, Cloverland, 2nd vice chairman; **Eric Baker**, Wolverine Power, secretary-treasurer; and **Brian Burns**, Presque Isle Electric & Gas, past chairman.

Craig Borr is president and CEO.

Unsolicited letters, photos and manuscripts are welcome. *Country Lines*, however, will not be responsible for their safe keeping or return.

The appearance of advertising does not constitute an endorsement of the products or services advertised.

Display ad representatives:
Michigan-Kissman Consulting
517-244-1844
National Country Market
512-441-5200

Change of Address: Please notify your electric cooperative. See page 4 for contact information.

YOUR CO-OP

Pages specific to your electric cooperative:
1, 4-5, 8, 25, 28-29, 32

*Not in all editions

On the Cover

Dominic Fredianelli (L) and Cole Smith are two of three soldiers featured in a new documentary about coming-of-age, the young who fight our wars, and the families and towns they come from. Photo – Heather Courtney

Michigan's Electric
Cooperatives
countrylines.com





Cloverland

ELECTRIC COOPERATIVE

MEMBER SERVICE CENTERS

Monday–Friday • 8 a.m. to 4:30 p.m.

906-635-6800 • 1-800-562-4953

Email: office@cloverland.com

24/7 Outage Reporting

Dafter (Main Office)

2916 W. M-28, Dafter, MI 49724

DeTour Village

836 M-134, DeTour Village, MI 49725

Newberry

6214 County Rd. 403, Newberry, MI 49868

Sault Ste. Marie

2972 W. 8th St., Sault Ste. Marie, MI 49783

BOARD OF DIRECTORS

Email: board@cloverland.com

Robert Schallip President
District B – Neebish Island

Dale Carlson Vice President
District A – Stalwart

Richard Newland Secretary/Treasurer
District A – DeTour Village

Gerald Nettleton Director
District A – DeTour Village

Carl Eagle Director
District B – Sault Ste. Marie

Linda Hoath Director
District B – Sault Ste. Marie

Tamara Gady Director
District C – Moran

Peter Legault Director
District C – Engadine

Virgil Monroe Director
District C – Manistique

General Manager Daniel Dasho

Local Editor Wendy Malaska

cloverland.com

MANAGER'S MESSAGE

Hot Summer, Hot Topics

Well, we sure got a dose of summer this year. Our hot summer brings to mind some hot topics that are on

the front burner at your electric co-op and will remain hot through the fall and winter.

The first hot topics are the cost of electric power and the reliability of that supply. There is a great deal of uncertainty in the wholesale electric market due to new federal EPA regulations that will begin rolling out this year and next year.

These regulations are intended to reduce sulfur dioxide and nitrogen dioxide emissions by 70 percent. But this has already been done. Since 1990, our industry has reduced emissions by over 70 percent. So these reductions are additional.

These new regulations will cost our industry nearly \$3 billion annually, and the cost will get passed down to consumers. Utilities will need to weigh these costs carefully and make some tough decisions. The question that will need to be answered is whether to upgrade a coal plant or just shut it down. If plants are closed, where will the power come from to meet our summer peak loads? We just don't know. If 10 percent of U.S. coal-fired plants were shut down due to EPA rules, that would mean a loss of 30 coal plants and a need to replace that generation in four years. That's not possible. It takes money and time. Each new plant costs about \$2 billion and then you need about eight years to get all the permits in place and actually get it built.

Some think we should build an equivalent number of wind turbines to take up the slack. It would require nearly 50,000 new wind turbines. If it takes about 40 acres per turbine, then the amount of land needed is about 2 million acres. Generating power from wind requires putting turbines where the wind blows constantly—at high enough levels to make them cost effective—in open spaces like the Dakotas, Kansas, Oklahoma, Minnesota and other

western states. Once it's produced, it takes transmission lines to move the power from one side of the country to the other.

Which brings me to the next hot topic: transmission. Our current transmission grid will have to be expanded. It would require a 950-mile-long transmission line, at a cost of \$2 million per mile, from South Dakota to Cleveland to bring in just a portion of that power. A number of such lines will be needed, but so far, none have been built.

My last hot topic is "do-ability." We need electric infrastructure, power plants and transmission

lines to keep the lights on. We face a monumental task to try and keep the lights on. We can't build fast enough to meet these new regulations. We must work to bring common sense back to the federal government when it comes to keeping costs down and the lights on. The regulators who develop these rules don't think about the "do-ability" of these standards. At a time when we are trying to keep up with the rising costs of power, regulators want to push the price upwards at a pace that can't be met.

The good news is that your electric co-op is not the only voice raising these concerns. Cloverland is part of a national reliability group that sets standards and looks to the future to make sure we keep a reliable electric system. Models will show what impact these regulations will have on our nation's grid. Armed with these studies, we will continue to make the case for keeping electricity affordable and reliable. Our economy runs on electricity. Weaken the grid and you weaken the economy.

Stay tuned and stay cool. We are in this for the long-term and will be sure to keep our elected leaders aware of these coming challenges.



Daniel Dasho
General Manager

New Meters More Than Kilowatt Counters

Co-op installs new meters in former Edison Sault Electric service areas.

Late last year, Cloverland Electric Cooperative began replacing meters installed in areas formerly-served by Edison Sault Electric with electronic meters equipped with automated meter reading (AMR) technology. These digital meters have been in use in legacy Cloverland Electric homes and businesses since 2006 and provide more accurate readings than their predecessors.

Digital AMR meters also improve the efficiency of operations and delivery of electricity. And since co-ops are not-for-profit, any money we save on daily operations will ultimately be returned to our member-owners.

The co-op reads AMR meters remotely—a savings of time, labor and money. Information from the meter is transmitted electronically to the co-op multiple times a day over the power lines. The entire process of contacting a single meter or group of meters is completed in about 20 seconds.

Besides reducing operational costs, AMR meters allow us to detect and respond to outages faster by isolating the approximate outage location. In many cases, we can identify the location and make the repairs rather than the member discovering it (e.g., seasonal residence) and then having to report it.

Additionally, this technology helps us better monitor our electric system. Using the metering information and assessment software, member service representatives can better help members address billing inquiries by providing information about power consumption patterns, outage and blink-count history, and voltage information. Because of this advanced technology, the co-op can also detect if someone tampers with the meter.

AMR Schedule

Cloverland has contracted with Kevin's Meter Testing of Atlanta, MI, to deploy the AMR meters by substation. In 2010, new meters were installed in Manistique and Garden. So far this year, the contractor has completed installations in the Les Cheneaux Islands area, Rexton, Curtis and is working in the St. Ignace area. The entire project is expected

to be completed next year when meters are changed out in Rudyard, Brimley, Kinross, Sault Ste. Marie and other remaining areas.

Kevin's Meter Testing will leave a door hanger at the location to let member's know the meter was changed. Members will need to reset electronic devices, such as a digital clock, due to a momentary power outage during the meter exchange.

Once the contractor has installed all the meters associated with a specific substation, the substation communications equipment will be installed. The AMR substation equipment routes the signal from the meter to the co-op. This part of the project may require a planned power outage due to the nature of the installation. The co-op will notify members when this type of work will occur through public service announcements provided to the local media, newspaper ads, notices on cloverland.com, and our phone notification system. It is important for members to keep a current phone number(s) listed with us in order to receive these notifications.

Eliminating Estimated Billing

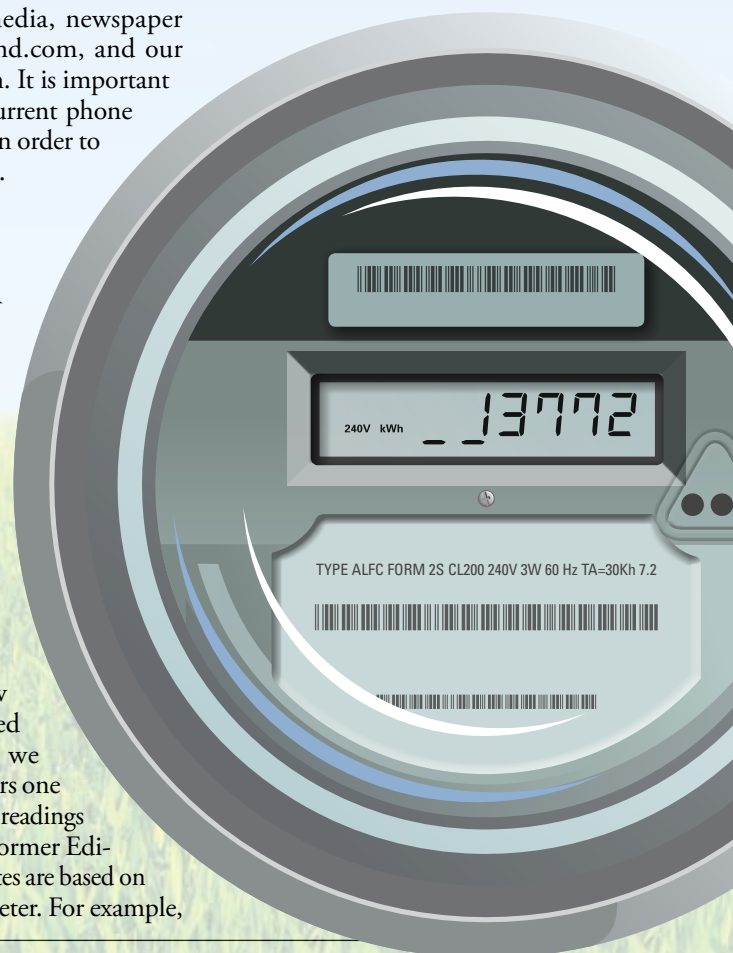
For billing purposes, AMR meters are read daily and the data transfers into the billing system automatically. This reduces the potential for human error. New AMR meters provide consistent billing periods, improved billing accuracy, and eliminate estimated bills.

However, until the co-op installs the new meters and the associated substation equipment, we will continue to read meters one month and estimate meter readings the following month for former Edison Sault accounts. Estimates are based on the usage history of the meter. For example,

a July estimate is based on the average of July and August of the prior year.

Members who would like to eliminate estimated bills (former Edison Sault services) may read and report their monthly meter reading either by calling the co-op's member services department or reporting it online at cloverland.com. The co-op can also provide prepaid meter reading postcards for this purpose. Meter reading instructions are available online or upon request.

Finally, members may have their bill based on actual readings taken by co-op personnel. The co-op will continue to read the meter every other month, however, the billing statement will reflect usage for a two-month period. Members who are interested in this option can call 800-562-4953.



In-home Devices Show Electric Use, Help Save Money

To help raise awareness of energy use, increasing numbers of consumers are considering installing in-home display devices that show how much energy a home uses at any given time.

Most in-home displays connect to a co-op's advanced metering infrastructure (AMI) system to provide real-time pricing. When the price of generating electricity rises, the unit sends a signal for you to begin conserving energy. Some models even allow you to set an energy-savings goal and track your progress online through a free energy use web portal like Google PowerMeter or Microsoft Hohm.

But no matter the features, folks who use in-home displays are likely to save 6 to 10 percent annually on their electric bills, according to studies by the Cooperative Research Network (CRN), an arm of the National Rural Electric Cooperative Association. Even



In-home displays like the PowerCost Monitor™ are being developed to provide a variety of information related to energy use, including how many kilowatt hours you have consumed and how much money you are currently spending on electricity.

after people stop actively paying attention to the displays, electric use behavior often changes permanently. On average, homeowners who “forget” about the displays may consume 1 to 3 percent less energy

than before they had one. By using less electricity, consumers help shave their electric co-op's service load. This saves everyone money in the long run by delaying the need to build power plants or purchase

additional wholesale power in a competitive market.

The most effective displays are easy to understand, interactive, and show electric use of individual appliances, says Brian Sloboda, CRN senior program manager. “These devices are best for those who are comfortable with gadgets, and possibly those with higher home energy use.

“People considering in-home displays should have a desire to reduce or at least understand their energy use,” Sloboda adds. “The displays, for example, will show how much electricity is needed when lights are left on in an empty room, and how much it takes to operate a really big LCD TV.”

In-home displays typically cost between \$100-\$200, depending on their features.

—Magen Howard

Sources: Cooperative Research Network, NRECA Market Research Services

MYSTERY PHOTO

Every co-op member who identifies the correct location of the photo below by **Oct. 10** will be entered in a drawing for a \$50 credit for electricity from your electric cooperative.

Please note that we do not accept Mystery Photo guesses by phone! Email mysteryphoto@countrylines.com, or send by mail to *Country Lines*, 2859 W. Jolly Road, Okemos, 48864. Include your name, address, phone number and co-op. The winner will be announced in the November/December 2011 issue.

The July/August contest winner is Elizabeth Wilson of Dowagiac, who correctly identified the “Cheetahs On The Run” sculpture on Depot Drive in Dowagiac.



Jul/Aug photo

Do you know where this is? ▶



Tell us about your favorite Michigan-made products!

Share a few paragraphs with us about your favorite Michigan-made product and we may write about it. Be sure to share why you like it and if you have a unique story to go with it, please send that, too. Email to czuker@countrylines.com or send to: *Country Lines*, 2859 W. Jolly Road, Okemos, MI 48864.

Info on Tattler Canning Lids/ Michigan-Made Product

If you are still intrigued about our July-August feature on the Tattler Reusable Canning Lids, here's the missing contact information:

WEBSITE: reusablecanninglids.com

PHONE: 877-747-2793





“stock” photos and do not claim these are professional kayakers, but the photo gives readers an idea of what kayaks look like and the fun that can be had with them, which is our main intent for this story. Thanks.

More About Vernors

I called the Snapple Co. again, and they said, “Yes, it is aged for three years in barrels” (there is a telephone number on the bottle). Also, they haven’t changed the recipe in over 40 years. The above is in answer to the letter in the last *Country Lines* (July-August).

I have had a lot of good comments about the article (June Michigan-made product, “Memories and History of Vernors Ginger Ale”).

— Marjory Priest

Kayaks

To your article in *Country Lines* (July-August 2011) on kayaks, the picture is staged—you do not see water movement and the paddles are in the wrong position—the one out of the water has to be at 90 degrees to the one in the water to reduce air flow. And, I have not seen any kayak on display or in the water that would be long enough, so it would not waddle like a duck unless it is an original “Eskimo” or a “Klepper.”

I was about 5-years-old when I first sat in a kayak—this is a little more than 80 years ago. We did not have any canoes, just kayaks going down the Mosel and Rhein rivers. Those kayaks were not plastic—they had a wooden frame and a canvas skin. Since 1963, I’ve owned a 17-foot (not seaworthy any more) folding kayak with a rudder sideboard and sail. Sometimes I think to take it out again, fix it, and play with it again.

— Hans Mueller, LeRoy

Editor’s Note: *It’s great that you have a long history with this wonderful sport and we hope you get to use your kayak again. As to the photo, we sometimes use*

More About Eagles

Regarding Don Ingle’s article, (May, “High-Flying Eagles”) how many bald eagles are currently nesting in Michigan? What county has the most? Least? How many counties are they nesting in?

— William Robson, Whitmore Lake

Don Ingle replies: *“According to Mathew Stuber of the U.S. Fish and Wildlife Service, Michigan’s population of American bald eagles is about 700 pairs, and they are now widespread in Michigan. Their favorite nesting sites are near large bodies of water, like rivers and lakes, as they are primarily fish eaters, although they will eat carrion. After nearly becoming extirpated from Michigan, their population rebound is one of conservation’s best success stories. Many consider passage of the Clean Waters Act in the 1970s to be the major reason for the recovery, since eagles eat fish and if fish were from contaminated waters it led to hatching failures.*

The highest number of eagles are found in the U.P. and northern half of lower Michigan, but they are now being seen in a majority of Michigan’s counties.

To Send Us a Letter:

We enjoy hearing from our readers, so if you wish to comment, email your letter to editor@countrylines.com or send to: *Country Lines Letters*, 2859 W. Jolly Rd., Okemos, MI 48864.

Letters are printed on a space-available/content basis, and we reserve the right to edit slightly for space reasons. Since there isn’t room to print every letter, please keep the size to no more than 350 words so we can include as many as possible.

Thanks for reading with us!

College Fire Safety

While college provides new and exciting opportunities, it also introduces safety hazards, especially to students living in dormitories, apartments and other community locations. An impeccable personal safety record doesn’t safeguard someone against the actions of other residents in shared college housing facilities. Therefore, it is extremely important to **develop and practice an escape route should there be a fire.**

Fire Safety

Fire is the third leading cause of accidental deaths in the United States. A residential fire occurs every 82 seconds in this country, and, once burning, the size of a fire doubles every 30 seconds. If a fire occurs in your building, evacuate as soon as possible. Do not try to act bravely or put the fire out. That is a fight too easily lost and is just not worth it.

If you have an escape plan, follow it at the first sign or smell of a fire. Never exit a door if it feels hot to the touch, as flames are likely on the other side. It is also a good idea to know where all the fire extinguishers are located in the building.



Stay safe—don’t overload power strips!

Fire Prevention

In community living facilities, everyone must do their part to make their dwelling a safer place. Here are a few easy steps you can take to help prevent fire through electrical hazards:

- ▶ Look for the Underwriters Laboratories (UL) mark on all products. It means they have been tested for safety.
- ▶ Make sure outlets are not overloaded.
- ▶ Check electrical wires and cords on appliances, tools, lamps, etc., to make sure they are not worn or frayed.
- ▶ Never run electrical wires or extension cords under carpets or heavy items, and never bunch them up behind a hot appliance.
- ▶ Unplug appliances when not in use.
- ▶ Make sure there is at least one smoke alarm on each level, and make sure they are maintained and tested regularly.

Fire facts

Fire is a chemical reaction involving fuel, oxygen and heat. Take away any of these elements and a fire cannot last. There are four classifications of fires, depending on their fuels:

Class A – Ordinary materials like wood, paper, cloth, rubber, and plastics. Most home fires fall into this category.

Class B – Combustible liquids—gasoline, kerosene, alcohol, paint, and propane—tend to be more severe and dangerous than Class A fires because the fuel is highly flammable.

Class C – Electrical equipment like appliances, switches, and power tools. These fires are extremely dangerous due to added shock hazards and because the source is energized. An energized fire source supplies a steady and constant ignition condition.

Class D – Combustible metals like magnesium, titanium, potassium, and sodium. These fires burn at a very high temperature and can react violently with water or other chemicals.

— Source: Underwriters Laboratories

STATE OF MICHIGAN

BEFORE THE MICHIGAN PUBLIC SERVICE COMMISSION

NOTICE OF HEARING FOR THE CUSTOMERS OF CLOVERLAND ELECTRIC COOPERATIVE

CASE NO. U-16353

- Cloverland Electric Cooperative requests Michigan Public Service Commission approval to reconcile its renewable energy plan costs and revenues for the period ended December 31, 2010.
- The information below describes how a person may participate in this case.
- You may call or write Cloverland Electric Cooperative, 2916 West M-28, P.O. Box 97, Dafter, Michigan 49724, (800) 562-4953 or (906) 635-6800 for a free copy of its application. Any person may review the application at the offices of Cloverland Electric Cooperative.
- The first public hearing in this matter will be held:

DATE/TIME: October 6, 2011, at 9 a.m. This hearing will be a prehearing conference to set future hearing dates and decide other procedural matters.

BEFORE: Administrative Law Judge Theresa A. Sheets

LOCATION: Michigan Public Service Commission, 6545 Mercantile Way, Suite 7, Lansing, Michigan

PARTICIPATION: Any interested person may attend and participate. The hearing site is accessible, including handicapped parking. Persons needing any accommodation to participate should contact the Commission's Executive Secretary at (517) 241-6160 in advance to request mobility, visual, hearing or other assistance.

The Michigan Public Service Commission (Commission) will hold a public hearing to consider the July 25, 2011 application of Cloverland Electric Cooperative (Cloverland) to reconcile its renewable energy plan costs associated with the plan approved in Case No. U-15816, for the period ended December 31, 2010. Cloverland's application states that its renewable energy plan included no request for a renewable energy surcharge, no surcharge was approved and none was charged to Cloverland customers in 2010. Cloverland states there are neither revenues nor expenditures to reconcile.

All documents filed in this case shall be submitted electronically through the Commission's E-Dockets website at: michigan.gov/mpscdockets. Requirements and instructions for filing can be found in the User Manual on the E-Dockets help page. Documents may also be submitted, in Word or PDF format, as an attachment to an email sent to: mpscdockets@michigan.gov. If you require assistance prior to e-filing, contact Commission staff at (517) 241-6180 or by email at: mpscdockets@michigan.gov.

Any person wishing to intervene and become a party to the case shall electronically file a petition to intervene with this Commission by September 29, 2011. (Interested persons may elect to file using the traditional paper format.) The proof of service shall indicate service upon Cloverland's attorney, Shaun M. Johnson, at Dykema Gossett PLLC, Capitol View, 201 Townsend Street, Suite 900, Lansing, Michigan 48933.

Any person wishing to make a statement of position without becoming a party to the case, may participate by filing an appearance. To file an appearance, the individual must attend the hearing and advise the presiding administrative law judge of his or her wish to make a statement of position. All information submitted to the Commission in this matter will become public information: available on the Michigan Public Service Commission's website, and subject to disclosure.

Requests for adjournment must be made pursuant to the Commission's Rules of Practice and Procedure R 460.17315 and R 460.17335. Requests for further information on adjournment should be directed to (517) 241-6060.

A copy of Cloverland's request may be reviewed on the Commission's website at: michigan.gov/mpscdockets, and at the office of Cloverland Electric Cooperative, 2916 West M-28, Dafter, MI. For more information on how to participate in a case, you may contact the Commission at the above address or by telephone at (517) 241-6180.

Jurisdiction is pursuant to 1909 PA 106, as amended, MCL 460.551 et seq.; 1919 PA 419, as amended, MCL 460.54 et seq.; 1939 PA 3, as amended, MCL 460.1 et seq.; 1982 PA 304, as amended, MCL 460.6h et seq.; 1969 PA 306, as amended, MCL 24.201 et seq.; 2008 PA 295, MCL 460.1001 et seq.; and the Commission's Rules of Practice and Procedure, as amended, 1999 AC, R 460.17101 et seq.
August 10, 2011

USDA Partners With Your Electric Co-op To Help Economy

A key element in reviving our state is inexpensive, sustainable energy. Rural electric cooperatives play a critical role in Michigan's economic revitalization, and the U.S. Dept. of Agriculture (USDA) Rural Development is pleased to be their partner.

Since 2009, USDA Rural Development has provided over \$140 million for infrastructure improvements to Midwest Energy Cooperative, Alger-Delta Cooperative Electric Association, Thumb Electric Cooperative, Great Lakes Energy Cooperative and Tri-County Electric Cooperative.

These investments have helped strengthen Michigan's agricultural sector, now the second-largest part of our economy.

USDA Rural Development provides a wide array of tools to help communities generate jobs, complete needed infrastructure improvements and provide their young people with the skills they need to create businesses in their hometown.

Our Business and Industry loan guarantee program can cover up to 90 percent of loans, helping banks to extend credit, and often causing them to offer better terms. Last year, 160 Michigan businesses were assisted with guaranteed loans or grants for a total investment of more than \$141 million.

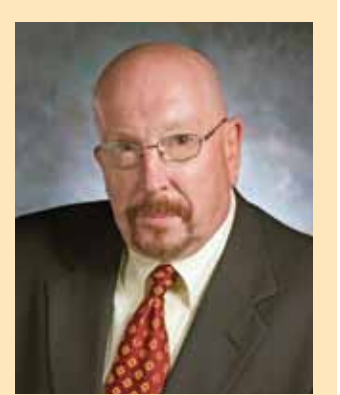
Applicants can apply through federal or state-chartered banks, credit unions, and savings and loan associations. The funds can be used for many purposes, including acquisition, start-up and expansion of businesses that create rural employment, though they may not be used for agricultural production (this falls under a different area of USDA).

Another tool is the Rural Economic Development Loan and Grant program, which finances business start-ups or expansions by working with an intermediary electric cooperative to provide low-interest loans to rural businesses.

We are also able to help communities with funding for emergency services, such as police cars and fire trucks, as well as long-term financing for water and sewer systems.

Rural Development funds can also be used for technical assistance, to improve energy efficiency, or to develop renewable energy resources.

In June, USDA Rural Development provided a \$12,825,000 loan guarantee with NOVI Energy to finance a community digester in Fremont. The project, which has a total cost of \$22 million, will be one of the first commercial-scale anaerobic digesters in the United States and will convert organic waste products—mainly farm and food processing waste—into biogas that is used to generate electricity. The facility will process more than 100,000 tons of waste annually, reducing landfill usage and improving the quality of agricultural runoff. In addition,



James J. Turner
State Director
USDA Rural Development

“The project will be one of the first commercial-scale anaerobic digesters in the United States and will convert organic waste products—mainly farm and food processing waste—into biogas that is used to generate electricity.”

the solid byproducts can be used for soil amendments and cow bedding.

Anaerobic digesters are not new in Michigan—many farms have them, and USDA Rural Development has taken a leading role in funding them. What sets Fremont apart is the scale—it will take in the food waste of an entire community and the electricity and byproducts it generates will likewise be provided on a wider basis. In fact, NOVI Energy has already signed a long-term contract with Consumers Energy for the power the digester will generate.

It is this confluence of renewable energy and sound environmental management that offers a chance for Michigan to once again take the lead in economic development.

James J. Turner is the state director for USDA Rural Development in Michigan.



Where Soldiers Come From

A Michigan native's new documentary is about family, friends and coming-of-age in wartime.

Like many of us, Dominic Fredianelli, Matthew Beaudoin and Cole Smith hail from a small Michigan town. Unlike many of us, these 23-year-olds have already spent nine months of their lives fighting in Afghanistan.

Heather Courtney is from a small town, too. She grew up in Houghton—a close neighbor to Hancock, where the three young men are from, but she didn't know them until a few years ago.

A journalist frustrated with how the media portrays small towns, Courtney came back to rediscover her own roots and find a new story. "I just think they tend to stereotype by telling rural stories that put people in a box that is easily identifiable, (such as 'farmers'

or 'people from Appalachia') and some of the stereotypes are not friendly," Courtney explains.

She found her story after a newspaper notice led her to attend a local National Guard unit meeting. That's how she met Dominic and his friends Matthew and Cole, and came to spend the next four years getting to know them and their loved ones before, during and after their service in Afghanistan. The finished story is a film called "Where Soldiers Come From," and is being released now.

Courtney is adamant, however, that her documentary is not a political statement about war. She's more interested in the emotional and personal aspects, so it's more about

taking the leap into adulthood in relation to our country's soldiers, families, friends and communities. "Good filmmaking is all about good storytelling, period," Courtney says. "It is a coming-of-age film set in the context of a war, but to me, the growing up in a small town part of the story was just as important as going off to war."

She will say, however, that the film brings up issues that need more attention, including better veterans' care, especially relating to the new "silent" war wound known as traumatic brain injury (TBI), and also post-traumatic stress disorder (PTSD).

Beaudoin agrees, noting that he is 90 percent disabled from this "invisible" wound, and Smith also has TBI, after experiencing



Page photos—Heather Courtney



Top: When Heather Courtney first started filming, there were five soldiers from Hancock (western U.P.) in the documentary, and this photo of them walking on a snowy street in Marquette is the film's signature photo. **Above, left:** Courtney spent five months filming soldiers from Hancock at war in Afghanistan. **Above, right:** Matthew Beaudoin is one of the three featured soldiers from Hancock. About 20 just from the Hancock area went to Afghanistan, and there are about 3,500 in the area's Guard unit.

exposure to eight explosions. Many soldiers have TBI, Beaudoin explains, which is caused by a severe blow(s) to the head and can cause many other illnesses, including memory loss, inability to walk, loss of feeling in limbs, and even related suicide.

“Their biggest challenge now is dealing with the continuing issues of TBI and PTSD (as seen in the film),” Courtney adds. “And, as is the case with many young 20-somethings today, dealing with the lack of jobs, and dwindling college resources.”

Beaudoin attends Northern Michigan University and hopes to become a social worker so he can help other veterans who struggle with TBI and other readjustment issues. The college support, and being from a family with a lot of military service, is one of the main reasons he and many of his friends joined the Guard.

“I love where we live because you don’t see problems like homelessness as much and it’s a great place to grow up, but it’s not the best for my future—it’s more expensive and working-wise, it’s a hard place to excel,” Beaudoin says.

About that “growing up,” Beaudoin notes, “Once someone goes over there [Afghanistan], you’ll never be the same person...” He and his friends were 20 when they went to war and it will take years, and lots of understanding and work, to digest the things they’ve done and seen. “For a lot of us the injuries are difficult, and minor things start to bug you more, like 18- or 19-year-olds who complain because their parents aren’t buying them a car—it boils you.”

After seeing the film, Courtney says, “I hope audiences will question a previously held belief, or change their perspective, or discover a truth about themselves.” For herself, she is more open to differing political views than before, “But mostly I feel changed because now I have all of these people who



Dominic Fredianelli rests after taking part in a weapons search in Afghanistan.



Heather Courtney, a U.P. native from Hancock, created the new Michigan-made documentary, “Where Soldiers Come From.” She now lives in Austin, TX, working on freelance films and as a reporter for National Public Radio.



A talented graphic artist that recently graduated from Finlandia University, Fredianelli paints a love mural on a wall in Hancock.

Where to see the film:

- Gala Hometown Premiere – Sept. 25-30 historic Calumet Theater, Calumet, MI
- Detroit Institute of Art – Sept. 30-Oct. 2
- Ann Arbor – Oct. 1
- Grand Rapids/Lansing/Saginaw – October (check local listings or internet)
- PBS Broadcast: Nov. 10, 9 p.m. (pbs.org)
- To see the film trailer and other info: wheresoldierscomefrom.com

are a part of my life and always will be—not just Dom, Cole and “Bodi,” but their families and others in the community,” she says. “Their openness, courage and love for each other continue to inspire me. And, I am thankful that I grew up in such a beautiful and unique place as the Upper Peninsula of Michigan!” Beaudoin adds, “She’s become part of the family—one of us—she’s like an auntie.”

As to being in a film, Beaudoin says, “We’re just small-town kids who hadn’t been to big cities, but people would come up and shake our hands, wanting autographs on posters, and stuff. It’s kind of weird at first...” But they enjoyed the Q&A tours and visiting L.A. and New York, and he notes, “It’s really all about Heather—going to film festivals and helping her get whatever recognition she can. She did a beautiful job of portraying us in this film.”

In her own mind, Courtney’s goal was

to tell a universal story about growing up so that people, no matter *where* they come from, could really get to know and identify with the people on the screen and see them grow and change. A number of screenings of the film aired this summer, with a jury award win at the South By Southwest film festival, but the national broadcast premiere is this fall (at left) on PBS’ “Point of View” documentary series.

“I think it’s a very good rep film of the everyday, regular soldier and where they come from—the humble beginnings all of us have, the brother connection of a small town, and going to war with people you grew up with,” Beaudoin says. “It’s not so much a war film as about soldiers who fight it, but if you want to see the effects on young kids who fight our wars—maybe you should see this film.” Afghanistan is America’s longest war (10 years), he adds, and “it’s time to bring our boys home.”

Beyond Swirly Bulbs

Federal regulations are spurring new lighting options.

On hot summer evenings, children love to chase fireflies, often catching them in jars. Then the real magic begins, as the intermittent glow captivates the captors.

That same sense of wonder can be found in labs as scientists refine the process of making light-emitting diodes (LEDs)—highly-efficient lightbulbs comparable to a firefly’s glow. Commonly used as solitary sensor lights in electronics, manufacturers are now searching for economical ways to contain a colony of LEDs in a single lighting shell. Just as children attempt to gather enough fireflies to make a lamp, an LED “jar” would create enough light output (lumens) to match that of traditional incandescent bulbs.

This research is part of a national effort aimed at redefining household lighting. Starting in January 2012, incandescent bulbs—a technology developed in the United States by Thomas Edison in 1878 and largely untouched since—must become more energy efficient.

Federal Mandate

Why is the government shining a light on—well, lighting? The U.S. Energy Information Administration (EIA) estimates we use 13.6 percent of our nation’s energy supply to keep the lights on, and a lot of that power is wasted. If you’ve ever touched a traditional lightbulb when it’s on, you realize much of the energy (90 percent) is released as heat (ouch!). This leaves a lot of room for improvement.

To tackle this issue, Congress passed the Energy Information and Security Act of 2007 (EISA). By 2014 household lightbulbs using between 40 and 100 watts will need to consume at least 28 percent less energy than traditional incandescents, saving Americans



Photos - GE Lighting

LED lightbulbs like the Energy Smart model from GE use between 75 and 80 percent less energy than classic bulbs.

an estimated \$6 billion to \$10 billion in lighting costs annually. The law also mandates that lightbulbs become 70 percent more efficient than classic bulbs by 2020 (LEDs already exceed this goal.)

“With shifting lighting options and consumers looking for every opportunity to save, navigating lighting solutions has never been so important,” declares David Schuellerman, GE Lighting’s public relations manager.

Look for Labels

Such a massive product change means consumers must switch from thinking about lightbulbs in terms of watts (amount of energy used) to lumens (amount of light produced.)

“Lumens, not watts, tell you how bright a light bulb is, no matter the type of bulb,” explains Amy Hebert at the Federal Trade Commission (FTC). “The more lumens, the brighter the light.”

The consumer-focused agency has designed a “Lighting Facts” label and shopping guide that compares a bulb being purchased with traditional incandescent lightbulbs based on wattages and equivalent lumens. Beginning in 2012, labels on the front and back of lightbulb packages will emphasize a bulb’s brightness in lumens, annual energy cost, and expected lifespan.

Is this a “Bulb Ban”?

Contrary to popular belief, the EISA law does not ban incandescent bulb technology;

it requires that bulbs use less energy.

“It’s equivalent to standards passed in the 1980s to make refrigerators more energy efficient, and we’re reaping those benefits,” remarks Brian Sloboda with the Cooperative Research Network (CRN), a division of the National Rural Electric Cooperative Association, the national trade arm of local electric co-ops. “Refrigerators use less than one-third of the electricity today than they did in the mid-1970s, but consumers can’t tell a difference in how their food is cooled. The premise is, why not do the same for lightbulbs?”

The EISA law halts the manufacture of inefficient lightbulbs, but stores will not remove tried-and true incandescent bulbs from their shelves right away—current inventory will still be available for sale until exhausted. And, the improved efficiency requirements only apply to screw-based lightbulbs; specialty bulbs for appliances, heavy-duty bulbs, colored lights and three-way bulbs are exempt.

Explore Your Options

Once traditional incandescents go the way of the passenger pigeon, residential bulbs will largely fit into three categories, each stacking up a bit differently: **halogen incandescents** use 25 percent less energy and last three times longer than regular incandescent bulbs; **compact fluorescent lightbulbs (CFLs)** use 75 percent less energy, last up to 10 times longer; and **LEDs** use between 75 and 80 percent less energy and can last 25 times longer.

“CFL, halogen and LED technologies all offer energy savings, but at different intervals, and all with their own pros and cons,” says Schuellerman.

For consumers comfortable with their old incandescent bulbs, halogen incandescents will be an easy first-step. Featuring a capsule of halogen gas around the bulb’s filament, they’re available in a variety of familiar colors and can be dimmed.

“Halogen offers a big efficiency advantage over standard incandescent bulbs,” says John Strainic, global product general manager, GE Lighting. “It consumes fewer watts while delivering a precise dimming capability and a bright, crisp light.”

The most familiar and economical options



Some consumers don’t like the swirly look of CFLs, so companies like GE are placing them inside shells, both clear and diffused, to look more like classic bulbs.

on the market are CFLs. The technology operates the same as fluorescent lighting in offices or kitchens, and the bulbs are now available in a wide array of colors (some can be dimmed). Always check the package to make sure a bulb meets your needs.

Schuellerman adds that CFLs are generally best when used where lighting is left on for extended periods and full brightness is not immediately necessary, such as family rooms, bedrooms, and common areas. As with all fluorescent bulbs, each CFL contains a small amount of mercury (five times less than a watch battery) and should be recycled. Many retailers offer free CFL recycling; visit epa.gov/cfl for details.

The final choice (remember the fireflies?) is LEDs. Although still developing, you can find LED lights, recessed fixtures, and some lower wattage replacement bulbs on store shelves.

“LEDs are the up-and-coming solution,” predicts Schuellerman. “As they come down in price, homeowners will embrace them. Currently, most residential LEDs are used for outdoor lighting where fixtures are left on for extended periods and changing bulbs is not easily done. LEDs are also great for linear applications like under cabinet lighting, where light sources with thin profiles are needed.”

The LEDs are more expensive than other options: a replacement for a 60-W incandescent bulb costs between \$30 and \$60. But costs will fall as manufacturers respond to growing consumer demand.

For example, in 2008 LEDs comprised 10 percent of the output from CREE Inc., a Durham, N.C.-based lighting manufacturer. Fast-forward three years and LEDs are responsible for 70 percent of the company’s business, and bulb efficiency has doubled. Innovations like a new production line last year are driving costs down.

However, LEDs are not without their problems—they have to stay cool to operate efficiently, and when several bulbs are placed together for a brighter, more consumer-friendly light, lifespan decreases. However, many manufacturers are accounting for this by adding cooling elements to LED bulbs. Some bulbs feature a spine designed to allow air to flow around the base; others have fans built into the ballast.

Can You See a Difference?

Some consumers believe more efficient bulbs won’t provide the same “warm” look and feel as classic bulbs, but Schuellerman disagrees.

“Lighting technologies are advancing at

such a rate that consumers won’t notice a marked difference in the color of light from different technologies or how that light is dispersed. You also won’t necessarily see a difference in bulb shape. Some consumers don’t like the look of twist-shaped CFLs, for example, so we offer covered CFLs that look just like incandescent bulbs. We also have an LED bulb that is a replacement for a 40-watt incandescent, as well as halogen bulbs, that both are housed in incandescent-shaped shells.”

The difference will be found on your monthly electric bill—more efficient bulbs use between 25 and 80 percent less energy than traditional incandescents, and last much longer. The U.S. Department of Energy claims each household can save \$50 a year by replacing 15 traditional incandescent bulbs.

“With these new technologies, homeowners will be spending less on electricity bills for lighting and changing fewer bulbs,” says Schuellerman.

Visit energysavers.gov/lighting to explore lighting options. For details on the change and other tips, visit ftc.gov/lightbulbs.

Sources: U.S. Department of Energy, U.S. Energy Information Administration, Federal Trade Commission, Cooperative Research Network, LUMEN Coalition, GE, Sylvania, Philips

Sources

■ **Full Text of EISA 2007:**

http://frwebgate.access.gpo.gov/cgi-bin/getdoc.cgi?dbname=110_cong_public_laws&docid=f:publ140.110

■ **FTC on Lighting Label:**

ftc.gov/opa/2011/06/lightbulbs.shtm

■ **Information from GE** gelighting.com/2012

■ **NEMA Lighting Brochure:**

nema.org/prod/lighting/upload/Lighting_Options_for_Your_Home_brochure_4web.pdf

■ **Refrigerator efficiency:**

http://apps1.eere.energy.gov/news/progress_alerts.cfm/pa_id=413

■ **U.S. Department of Energy:**




As of Jan. 1, 2012, traditional 100-watt incandescent lightbulbs will no longer meet efficiency standards and be unavailable at most stores. As of Jan. 1, 2013, traditional 75-watt incandescent bulbs will no longer be available; 40 and 60-watt versions will be unavailable as of Jan. 1, 2014.*

*The act specifically limits the import or manufacture of inefficient bulbs. Stores will be able to sell remaining inventory.

What Are My Lighting Options?

Starting in 2012, lightbulbs must be more energy efficient.

The three most common bulb options consumers will find on store shelves are:

- **Halogen incandescents**
Energy Savings:* 25 percent
Lifespan:* Three times longer
Annual Energy Cost: \$3.50
- **Compact Fluorescent Lightbulbs (CFLs)**
Energy Savings:* 75 percent
Lifespan:* 10 times longer
Annual Energy Cost: \$1.20
- **Light-emitting diodes (LEDs)**
Energy Savings:* 75-80 percent
Lifespan:* 25 times longer
Annual Energy Cost: \$1

*As compared to traditional incandescent bulbs

Learn more at energysavers.gov/lighting

'Mums' the Word for Fall Color



Chrysanthemum pacificum

Mums are long-lasting perennials that come in many brilliant varieties.

For late summer or early fall blooms in your garden, chrysanthemums are a spectacular choice.

It might surprise some folks to learn that chrysanthemums have been popular in the U.S. for only the past 60 to 80 years. Mums are actually native to China and were traced as far back as the 15th century B.C. The plant was introduced to the West in the 1600s. The term chrysanthemum is traced to Swedish botanist, Karl Linnaeus, who in 1753 first coined the word from the Greek chrysos (gold) and anthos (flower). In the late 1990s, botanists reclassified the mum and placed it in the genus *Dendranthema*. However, botanists recently reversed themselves and placed mums back in the genus *chrysanthemum*, which is how most gardeners recognize the plant.

There are essentially eight different types of mums to choose from:

1. **Anemone** – a daisy-like flower with one to 5 rows of petals radiating from a rounded crest;
2. **Cushion** – often called “azalea” mum growing on low, bushy plants;
3. **Decorative** – a large mum with multiple rows of petals either curving toward or away from the center;
4. **Pompom** – small, stiff, globe-like flower;
5. **Quill** – long, straight tubular petals;
6. **Single** – daisy-like flower with several rows of flowers radiating from a flat center;
7. **Spider** – long tubular petals with curled ends;
8. **Spoon** – petals are spoon-shaped. Anemone, cushion, decorative and single have the largest number of varieties that are hardy for our area while pompoms, quill,

spider and spoon have fewer varieties that are hardy here.

Since there are so many reasonably priced mums sold in late summer, many people think of them as annuals. In the fall, they buy mums for their brilliant colors, then dispose or compost them once the frost comes. However, mums *are* perennials and if you are interested in varieties that are not readily available, you may decide to grow your own.

Here are some tips from Donald Ellwood, president of the Michigan Chapter of the National Chrysanthemums Society in Dearborn. Ellwood is also currently serving his second term on the board of the National Chrysanthemums Society.

“The best time to plant mums is in the spring, once the frost has past,” says Ellwood. “This gives the plant plenty of time to get established before winter, since their roots are shallow.” Make sure the mum you buy is hardy for your USDA zone. “Choose a location that gets at least six to eight hours of sun. Mums like well-drained soil that’s watered regularly,” says Ellwood. Since he’s growing mums to show, he feeds them with a 20-20-20 granular fertilizer when planting, then uses a liquid fertilizer every 10-12 days once they are established. The average gardener can get away with an initial granular fertilizing when planting, then once again in mid-July.

The key to good flower production is to

start pinching them back when the plant is 6 inches tall. Take them back about an inch, then pinch back every two weeks until mid-July. Mulch your plant to keep weeds down and moisture in the soil. An extra mulching of 4 to 6 inches in the fall help them survive the winter. Ellwood likes to mulch his 80-plus plants with alfalfa, which he buys from the feed store. “I’ve found that chopped maple leaves get too heavy, but the coarser chopped oak leaves would work well.”

Ellwood grows lots of spider mums (or Fuji mums) which are considered the most exotic variety. One of his favorites is *c. Fleur de Lis* which is one of the largest spider mums with exquisite, fine lace metallic silver florets which spill gracefully from a very full wine-colored center. The *Fleur de Lis* is not hardy in Michigan and would need to be overwintered in a root cellar.

Another of his favorites is *C. pacificum* (Zone 5; Zone 4 with protection). This unclassified mum has a very distinctive white trim around the leaf’s lobed edges. The flowers are tiny button-like yellow blooms reminiscent of an ageratium. Both these varieties are available from King’s Mums out of Oregon (kingsmums.com).

For more information on growing mums visit michigangardenerscompanion.com.

Rita C. Henehan is an author, freelance writer and photographer.



**HIGH-SPEED
INTERNET NOW AVAILABLE**
STARTING AT **\$14.95***
(subject to availability)

\$
Packages starting at
19.99
a month
for 12 mo.
(Req. activ. \$24.95/mo.)

Regular price

GUARANTEE THROUGH JAN. 2013

(Subject to qualifying packages only)

with qualifying packages you can get:

FREE

HBO
(3 channels)

cine max
(3 channels)

starz
(3 channels)

SHOWTIME
(3 channels)

30 Movie Channels
for 3 months

See below for details.

FREE

BLOCKBUSTER
for 3 months
Unlimited DVD to mail plus in-store exchanges

get access to **over 100,000 movies**
including new release movies

FREE

Up to **6 Room**
Installation



2 Room
HD DVR Upgrade
(1 HD DVR + 1 SD DVR)
(SD DVR upgrade fee apply)

FREE

HD
for life
(Requires 24-month Agreement)



Watch Every Touchdown from Every Game, Every Sunday Afternoon.

Available with select regular packages through VU.



CALL TODAY

AND ASK ABOUT NEXT DAY INSTALLATION (in most areas)

1.877.417.2527

WWW.INFINITYDISH.COM

WE ARE OPEN 7 DAYS A WEEK • 8 AM - MIDNIGHT EST • SUNDAY 9 AM - MIDNIGHT EST
OFFER ONLY GOOD TO NEW DISH NETWORK SUBSCRIBERS • SE HABLEA ESPAÑOL

Remote Movie Package offer ends 1/31/13. Offer value is up to \$249 after 3 months then covered price applies unless you upgrade. HBO, Showtime and related channels and service marks are the property of Home Box Office, Inc. Starz and related channels and service marks are the property of Starz Encore Group, LLC. SHOWTIME and related marks are registered trademarks of Showtime Networks Inc., A CBS Company. With qualifying programming you will receive MGM-Smart Pack programming through VU. Qualifying programming packages include America's Top 100 Plus, America's Top 200, America's Top 250, ENHANCED Doc, Concert, Max, CSI America Show, and CSI America Live. You will forfeit programming if you do not maintain a qualifying programming package. You must not let your subscription lapse at the end of promotional period. © 2012 NFL Enterprises LLC. All NFL-related trademarks are trademarks of the National Football League. Offer valid for BLOCKBUSTER by Mail™ 3-disc pack requires activation of new qualifying Dish Network service between 8/1/11 and 1/31/13 and an active Dish Network account. BLOCKBUSTER by Mail account will require valid email address, internet connection, and valid form of payment. You must redeem offer within 45 days following Dish Network service order. At end of 3 months you will be charged then-current rates unless you cancel BLOCKBUSTER by Mail service. You can exchange online rentals for in-store movie rentals. Exchanges are valid only at participating BLOCKBUSTER stores. Existing BLOCKBUSTER by Mail customers are not eligible. This offer is not available in Puerto Rico or the US Virgin Islands. BLOCKBUSTER name, design and related marks are trademarks of Blockbuster LLC. © 2011 Blockbuster LLC. Digital Home Advantage also requires 24-month agreement and credit qualifications. Credit limit fee of \$10/month (minimum applies) if service is terminated before end of agreement. After 12 months of programming credits, then current price will apply. See Standard Professional Installation only. All equipment is leased and must be returned to Dish Network upon cancellation or termination of service. Late and monthly fees may apply based on type and number of receivers. HD programming requires HD receiver. Price, package, and programming subject to change without notice. Offer available for new and qualified former customers, and subject to applicable Professional and Residential Capture agreements. Additional restrictions may apply. Offer ends 1/31/13. \$25 Starz gift card requires activation and \$2.95 shipping and handling fee. You will receive a claim voucher within 14 days and the voucher must be returned within 30 days. Your Visa® gift card will arrive in approximately 4-6 weeks. INFINITYDISH charges a one-time \$49.95 non-refundable processing fee. Indiana CTS Reg. No. 13. 0-1306. *Certain restrictions apply. Based on the availability in your area.



\$25 Visa
gift card with activation

(courtesy of InFINITYDISH, certain conditions apply)

Scan this
QR Barcode
with your phone
and learn more
about 5 promos!



Get FREE barcode scanning software at: www.i-nigma.mobi

Back-to-school Relationship Skills

Instead of school supplies, give ‘life supplies.’

It’s September, when families engage in a ritual dance of shopping, backpack stuffing, bus-stop waving, form-signing, and finger-crossing in an effort to ensure success for their child’s school experience.

Sometimes I wonder, though, if we pack all the right things for that first day of school. I’m all for equipping students with the best wardrobes, notebooks and technology tools they can afford. It all supports learning and sends a message that school matters.

But let’s face it. School is about far more than reading, writing and arithmetic for kids. (Some days, I suspect their teachers wonder if it’s about those things at all!) What really gets our kids’ attention is relationships. And relationships—with teachers, parents and peers—can make all the difference in success at school and in life.

Research tells us that when children have friends they are happier, get in less trouble, achieve better grades and higher test scores, and are more involved in school activities. Socially competent children and youth get along better with their teachers, who tend to like them and give them more support, which improves their school performance. Students who feel connected to school are more motivated to succeed academically, are more engaged in class, and are less likely to repeat a grade.

So what if, this year, we all skipped the back-to-school shopping and instead stuffed our kids’ “social-emotional backpacks” with the skills they need to build strong and healthy relationships—with their peers, certainly, but also with key adults in their lives. Those kinds of school supplies are easy on the pocketbook; but they take lots of time and conversation.

Mark Hansen, author of “Success 101 for Teens: 7 Traits for a Winning Life,” has some ideas on how to start. “Too many people talk in abstracts about communicating with their kids,” says Hansen. “You have to talk about specific issues.”

Hansen thinks the start of school is the perfect time for parents to discuss friendships

with their kids.

“The truth is many kids wind up in trouble ...because they’ve simply chosen the wrong friends,” Hansen notes. “At the beginning of every school year, kids meet new friends every day, and it’s important to recognize that sitting next to a guy who feeds you answers in English class is not necessarily the best basis for a friendship.

Hansen said that adults evaluate friendships based on whether people share our interests and values. If parents taught their kids to approach their friendships in the same manner, they might experience fewer problems with their kids “hanging out with the wrong crowd.”

He points to seven traits kids should look for both in themselves and their friends:

► **Determination** means being committed to what you want to achieve and making sure you are mentally and physically prepared.

► **Responsibility** revolves around accepting full responsibility for ourselves. We are each in charge of our own behavior and actions.

► **Confidence** is about believing in yourself, because if you don’t believe in yourself, no one will.

► **Love** means understanding the power of that emotion. It has the power to drive us to do both wonderful and dreadful things, and we must be able to manage that power with wisdom and judgment.

► **Persistence** maintains that you must stick to what you want to achieve and continue forward with making sure what you are doing is supporting those goals.

► **Dreams** are important, because they are the fuel for our engines. We must keep each of our dreams alive; each of our personal dreams that we have for ourselves.

► **Attitude** is about making choices. A consistently positive attitude is what we need in order to accomplish all of our dreams.

“Every day there are discussions in the media about problems with our youth,” Hansen adds. “Just read the papers each day. My belief is that we must counter that



Photo—iStockphoto.com/Kia Chiang

attack and provide a step-by-step guide for our youth to follow, empowering them for a winning life.”

I often see bumper stickers claiming “My child is an honor student”; if your child earns one, plaster it on with pride. Just don’t forget to mention his kindness, persistence and delightful sense of humor. Those important traits might not earn awards, but success—or happiness—will be hard to achieve without them.

Homework Can Wait

Time spent on-task makes a huge difference when it comes to success in school, on stage, or through sports. But save time for heart-to-heart talks as a family. While peers have a lot of influence on teens, studies show parents have more. A 2004 study, for example, showed that nine out of 10 teens say their mothers have a high level of influence in their lives; and eight in 10 say the same of their fathers.

Adolescents who are strongly connected to their parents perform better in school and are less likely to smoke, abuse drugs, and engage in other destructive behaviors. Even if you feel you’ve lost all influence, keep talking. Your teens are listening.

Harley Bra Keeps It 'Cool'

While laid-off from his work as a trim carpenter, Tom Hovie was looking for something to keep him busy. Instead, he became employed with his own new business, Northern Michigan Leather.

A long-time Harley Davidson rider, the Great Lakes Energy Co-op member always liked the idea of a front bra on cars because they are classy and protect the paint, so he thought, "Wouldn't that be cool to have a leather bra on my Harley?"

Finding only two unacceptable covers (vinyl that didn't look good or fit, and another at a spendy \$950), he began making his own fairing bra (photo, right and p. 3).

An admittedly detail-oriented guy who often changes things he buys to "fix crappy engineering or simply make it my own," he went through tons of trial and error before making a few he could take to bike shows. "The response was overwhelming!" says the Charlevoix resident.

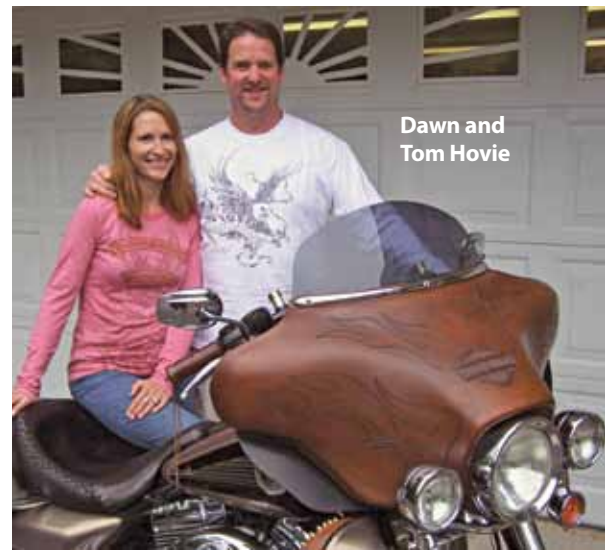
When the first leather fairing hit the streets,

he knew he had something because everyone who saw it said, "wow, that's the coolest thing I have ever seen—there is nothing like it available on the market." "The fairing cover does personalize your Harley, stones bounce off instead of chipping the paint, and bugs clean off easily," he explains.

Hovie now sells one custom fairing bra a week, and a few at each show he attends. Prices vary, depending on how much customization is requested. "Things are evolving on a daily basis and I am constantly preparing for more orders," Hovie says.

His wife Dawn manages the website (motorcyclefairingbra.com or call 231-675-4712) and helps with new designs. Their son, Sammy, also designs leather motorcycle hand grips.

"With the help of a few ads in biker mags



Dawn and Tom Hovie

Photo courtesy Tom Hovie

coming out soon, I speculate growing this business again," Hovie says. He likes Harleys because you can modify them in any way, and you're still just "a guy living his dream."

Hovie's dream is to work at home, be happy and content with what he has, and "make cool bikes even cooler."

See page 6 to tell us about your favorite, or a unique, Michigan-made product.



WORLD'S 1ST SELF-FEEDING CHIPPER FOR HOMEOWNERS!

Just load a DR® RAPID-FEED™ CHIPPER, step back, and watch it chip branches up to 5½" thick!

SELF-FEEDING

saves time and energy. Most branches can be dropped into the hopper and will self-feed, instead of you having to force-feed them.

CHIP BRANCHES UP TO 5-1/2" THICK with powerful engines up to 18 HP.

PRO-SPEC™ CHIPPER KNIFE

is made of forged alloy tool steel, making it exceptionally strong with an excellent edge-holding ability.

TRACTOR OWNERS! 3-Point Hitch, tractor-mounted models also available.



LIMITED-TIME OFFER
1★YEAR TRIAL

72534X © 2011



Call for a FREE DVD & Catalog!
TOLL FREE **1-888-206-5291**
www.DRchipper.com

STUMP REMOVAL FAST & EASY!

ELIMINATE Landscape Eyesores with a DR® STUMP GRINDER!

- **Make stumps DISAPPEAR.**
- **EXPAND** lawn areas.
- **OPEN UP** fields & meadows.
- **BLAZE** new trails.
- **REMOVE** mowing hazards.

The DR® STUMP GRINDER uses carbide-tipped cutting teeth that take over 400 "bites" per second, to pulverize stumps into a pile of woodchips. Quickly and easily, you can grind any size tree stump below ground level. Gone forever!

LIMITED-TIME OFFER
1★YEAR TRIAL



72535X © 2011



Call for a FREE DVD & Catalog!
TOLL FREE **1-888-206-5291**
www.DRstumpgrinder.com



Photos—iStockphoto.com

Cooking With Fresh Herbs

One tablespoon of fresh herbs is equivalent to 1 teaspoon of dried (except rosemary—which is the same, fresh or dried). The flavor of fresh herbs will disappear if overcooked, so add them to your cooked dish at the very end. To store fresh herbs, wash, dry and roll them in a damp paper towel and place in an unsealed plastic bag in the refrigerator for up to seven days. Always find hundreds of recipes at countrylines.com.

Grandma's Minted Watermelon

6 c. cubed, seedless watermelon
3/4 c. fresh mint, finely chopped and packed

Dressing:

4 T. sugar
1/2 c. lime juice
1 t. olive oil

Whisk dressing ingredients together until sugar dissolves. Mix watermelon and mint; pour dressing over top and mix well. Serve chilled.

Deborah Black, Sandusky

Pineapple Salsa

1 20-oz. can pineapple tidbits
1/2 c. finely chopped red bell pepper
1/2 c. finely chopped green bell pepper
1 T. chopped green onion
2 t. chopped fresh cilantro or parsley
2 t. chopped jalapeño chilies
1 t. grated lime peel

Drain pineapple and reserve 1/4 cup juice. Combine pineapple, reserved juice, bell peppers, onion, cilantro, chilies and lime peel in a small bowl. Serve at room temperature or slightly chilled over grilled chicken breasts or fish filets, with tortilla chips, or on tacos or quesadillas.

Paula Brousseau, Bellaire

Easy Summer Marinade

1/4 c. lemon juice
1/2 t. crushed red pepper
1/2 t. black pepper
1/2 t. salt
3 cloves garlic, minced
1/4 c. fresh parsley, coarsely chopped
1/4 c. fresh basil, coarsely chopped
fresh cilantro, dill and oregano, to taste
1/2 c. olive oil

Combine lemon juice, crushed red pepper, black pepper and salt. Add garlic and fresh herbs; whisk in olive oil. Stir well before using.

Mary Ellen Wynes, Mt. Pleasant



Mozzarella and Tomato Salad

8 ozs. mozzarella cheese, cut in 1/4-inch pieces
2 Roma tomatoes, finely chopped
2 T. olive oil
2-3 cloves garlic, minced
2-3 T. fresh basil or flat leaf Italian parsley, chopped

Combine ingredients and refrigerate. Bring to room temperature before serving.

Laura Foley, Comins

Roasted Eggplant with Basil & Garlic

6 small or 2 large eggplants
1/2 c. fresh parsley
1/4 c. tomato paste
2 lg. cloves garlic, peeled
1/2 c. fresh basil
3/4 c. water, divided

Halve eggplants; sprinkle with salt and set aside. Place garlic, parsley and basil in a food processor; process until smooth. Pat eggplant dry. Cut a gash into the meat of the eggplant, but do not cut through skin; stuff with parsley mixture. Place halves in a baking dish sprayed with cooking spray. Combine tomato paste with 2 tablespoons water; spoon over eggplants. Add remaining water to pan. If using large eggplants, cover and bake at 400° for 30 minutes, uncover and bake 15 minutes longer. If using small eggplant, bake uncovered at 400° for 30 minutes.

Marjorie Gask, Livonia

Savory Lettuce Salad

4 c. shredded lettuce
1/2 c. chopped tomato
1/2 c. chopped green pepper
1/2 c. chopped sweet red pepper
1/2 c. chopped fresh mint
1/4 c. chopped fresh parsley
1/4 c. chopped fresh chives
1/2 c. chopped green onion
Italian dressing

Toss fresh ingredients together; add enough dressing to coat, and toss thoroughly. Garnish with fresh dill and pomegranate seeds, if desired. Serves 6 to 8 people.

Deborah Black, Sandusky

Fresh Herbed Dipping Oil

1 t. minced garlic
1 t. finely chopped fresh rosemary
1 t. finely chopped fresh oregano
3/4 t. finely chopped basil
1/3 t. crushed red pepper flakes
1/2 c. extra virgin olive oil

Combine ingredients and salt and pepper to taste. Serve with crusty bread. Makes 1/2 cup.

Jacqueline Muma, Hastings

▶ **Send in your recipes!** If published, you'll receive a kitchen gadget. Send in: **LAMB & VEAL recipes by Oct. 10.** Mail to: Country Lines Recipes, 2859 W. Jolly Rd., Okemos, MI 48864; or email recipes@countrylines.com.

Fresh Herb Flavor Guide

BASIL: Fragrant and spicy, almost peppery. Great with tomatoes, vegetables, poultry, grilled pizza, salads. It's best used as whole leaves or torn. Smaller leaves at top of bunch are the sweetest.

CHIVES: Subtle onion flavor with grass-like leaves. Great with egg dishes, soups, sauces, baked potatoes, fish. Snip with scissors for best results. Chive flowers make a pretty garnish.

CILANTRO: A lively flavor; soapy, some say; looks similar to flat-leaf parsley. Great with Asian, Mexican and Indian dishes; mix in salsas and chutneys. Leaves become bitter after plant flowers. Dried seeds are the spice coriander.

DILL: Fresh and grassy; feathery leaves used in pickle brine. Great with tuna salad, omelets, vegetables, seafood dishes, yogurt dressing for cucumbers, herb vinegars. Use fresh or add to hot food just before serving.

MINT: Cool; brightens up both savory and sweet dishes. Great with beverages, jellies, sauces, marinades for meat and vegetables; often tossed with buttered peas. The most popular variety is spearmint. To dry, hang in a dark place with low humidity.

OREGANO: Earthy; balances acidic tomatoes—hence common on pizza. Great with lamb, beef, eggs, beans, eggplant. Closely related to marjoram (but more pungent).

PARSLEY: Peppery and fresh; curly parsley is milder than flat-leaf Italian. Great with salads, vegetables (especially potatoes), pasta. Either variety is a breath freshener.

ROSEMARY: Pungent aroma and pine flavor. Great with Mediterranean dishes, lamb, poultry, fish, breads; add sprigs or finely chopped leaves to long-cooking stews. When grilling, sturdier stems make good skewers; branches can be a basting brush.

SAGE: Very aromatic and woody. Great with fresh sausage, holiday stuffing for turkey, rich meats like pork, goose and duck. Deep-fried sage is a lovely garnish.

THYME: Minty and citrusy. Great with Mediterranean dishes, stews, eggs, seafood, poultry; toss sprigs into boiling water to flavor steamed rice.

Source: goodhousekeeping.com

NEW 2011 DESIGN



**RESIDENTIAL UP TO 10,000SQ FT.
COMMERCIAL UP TO 25,000SQ FT.**

**EPA CERTIFIED MODELS
WOOD, COAL, CORN,
PELLET, & WASTE OIL
OPTIONS**

HEAT MULTIPLE BUILDINGS,
POOLS, HOT TUBS,
HOT WATER TANKS,
& GREENHOUSES

LIMITED LIFETIME WARRANTY



STATES

OUTBACK HEATING, INC.
Eastern U.S. Distributor

800-743-5883
www.outbackheatinginc.com

HEATMOR

STAINLESS
STEEL
OUTDOOR
FURNACES

Order your 2012 wall calendar today!



Only \$7.50 each

Order 3 or more,
only \$6.00 each

Flat \$5 shipping
regardless of qty!

- Made in Michigan
- Standard & custom designs available
- Great gift ideas for the home or office
- Promotional calendars our specialty



877.432.7539

www.farleycalendars.com/2012

World's **FASTEST** Log Splitter!

The new DR® RapidFire™ Log Splitter slices through logs in under two seconds—up to six times faster than ordinary log splitters. We've replaced hydraulics with two 74-pound cast iron flywheels that generate massive power. Split the toughest logs with ease...guaranteed!

LIMITED-TIME OFFER!

- Introductory Pricing
- 1-Year Trial



PATENT PENDING



Call for a **FREE** Catalog and DVD

on the full lineup of new DR® Log Splitters including gas, electric, and 3-point hitch models!

1-888-206-5291 | DRLogSplitters.com



OUTSPLITS A 34-TON!

Watch the video online.

72679X © 2011 CHP

The 'Quirky' Timberdoodle



Photo - iStockphoto.com

Saving habitat is key to halting the woodcock's decline.

The "Timberdoodle" season opens on Sept. 24, a fact not lost on most upland bird hunters.

The upland aspen coverts and wetland tag alder edges of northern Michigan have long been the places to seek woodcock. If you do, remember an old "timberdoodler's" hunting advice.

"If you are hunting 'timberdoodles' and don't get some mud on your shoes, you're hunting in the wrong places."

That's sage advice to remember in woodcock season. The key is that, like any other critter, a woodcock has to eat. If you want to find deer, you look for acorns; if grouse are on the agenda, look for gray dogwood, wild berries and seeds; and for woodcock you need moist soils because that is where to find earthworms, the prime food for this long-billed, stub-tailed little shorebird that deserted the marshy beach edges for northern woodlands.

Woodcock numbers over their range have been declining. Most studies, including the impact of hunting on their populations, show clearly that it is loss of habitat, human land-use shifts, and lack of consistent habitat management, especially on private forestlands, that are the major reasons for this decline—not hunting.

Still, the fall upland game season will draw hunters to the northern coverts to seek this 'quirky' bird in those certain habitats. If they have moist spoils or are close to wet areas, these are prime places to look up

Mr. Woodcock.

When we say 'quirky bird,' we do not mispeak. Woodcock come equipped with some built-in survival abilities, thanks to whatever divine engineer designed their needs for food and survival.

First, that long bill; it comes with a special tip that can grip like pliers to pull up a worm in a wrap-around motion. The long bill plunges deep into the soil to grab its dinner, and it knows just where to stab the earth thanks to an upside down brain that puts its ears closer to the ground—great for detecting worm or grub movements.

Its tail is short and stubby, with a small ring of white tip marks on the feathers. But it makes up for its short, squat body with ultra-wide wings able to reach speeds that often fool gunners.

Even its voice is quirky—a nasal "peent" like a tree frog with a sore throat.

The 'timberdoodle' alarm system is built for survival. When a potential danger or predator comes near, it does one of two things. Sits tight and lets the markings of its camouflage feathering blend in the brushy autumn ground cover. This ability to blend in is one the hunter knows well. Birds hit and fallen to that ground cover are hard to spot. Many a hunter has stood over a downed woodcock and not been able to

make it out from the leafy ground debris. Most serious woodcock hunters usually have a bird dog that does the finding and retrieving for them. (The dog also finds and points

live birds when they are still sitting tight.)

Secondly, when flushed, woodcock can almost seem to hover and fly forward or backward like a helicopter, but when it is ready to escape it can suddenly fly at full-flank speed straight out before towering up and over the tree line cover. This ability to toss a whole bag of fight tricks at a hunter has made shintangle chumps out of skeet range champs.

Maintaining the habitat of the woodcock is vital, and not just on public lands. Too many acres of good habitat are lost to "benign management"—that is, no management at all—on private lands. So, enrolling the private woodlands owner in efforts to maintain and improve woodcock habitat may be even more important than on public lands.

Michigan's woodcock hunting season length and daily bag limits have gradually been reduced by the Fish and Wildlife Service, as this bird is a migratory species and subject to federal game law.

This year, the Michigan woodcock hunter has a 45-day season which runs to Nov. 7, with a three-bird daily limit, six in possession after opening day.

While the season is short, it is regarded by many upland hunters as the most challenging of game birds just because this 'quirky' little bird always seems to stay a few tricks ahead of hunters on most days afield. In the end, it is the challenge of woodcock hunting that brings the uplander back year after year, not the number of birds in the bag.



Seek these types of habitats as you hunt:

- ▲ Aspen stands near moist lands.
- ▲ Under tall bracken fern in areas of large-bole aspens and close to opening edges.
- ▲ In tag alder thickets along creeks and wetlands.

Don Ingle is an avid outdoorsman and award-winning outdoors writer that submits regularly for Country Lines.



Safe Shopping Online

Like many consumers today, you probably do some shopping online. Every year, online sales increase dramatically. During the 2010 Christmas shopping season, internet-related sales grew 15.4 percent from the same time period in 2009—reaching an astonishing \$36.4 billion. While shopping from the convenience of home can save time, money and gas, there are some important things to consider:

✓ **Know your retailer.** It's always safer to shop with merchants you know. If you want to buy from a website that's new to you, do an online search for that merchant and "complaints" to check for negative chatter about the seller.

✓ **Use secure websites.** When placing your order on the merchant's website, make sure that there is an "s" at the beginning of the web address: For example, the URL should begin "https://" instead of just "http://." Also, be sure to look for a padlock icon in the upper or lower right-hand portion of your

computer screen. Both of these mean that the site you are visiting uses a high level of security to protect your personal information.

✓ **Credit cards give you greater protection than cash and debit cards.** If you are not charged the correct amount for your purchase, or do not receive the merchandise you ordered, you can dispute the transaction under the terms of the Fair Credit Billing Act if you've used a credit card.

✓ **Choose your password carefully.** Most websites require you to use a password to access your personal information and place orders. Be sure to create a password that is not easy for others to guess—and use a combination of letters, numbers, and, if possible, symbols such as "*" and "%" to make it more difficult for your information to be accessed by others.

✓ **Check the merchant's privacy policy.** This will tell you how they plan to use your information—including whether they will share it with others. You may wish to avoid



Online shopping can be convenient and fun, but it's important to stay safe while you're looking for goods.

sellers that do not have a privacy policy, as you have no way of knowing what they'll do with your data.

✓ **Always print and keep the receipt from your transaction.** It contains all of the information from your order, including what you bought, the price you paid, and any order or confirmation number. This is vital if you need to follow up with the merchant or dispute your transaction.

Shopping online is easy and convenient—but by taking some simple precautions, it can also be safe.

—Doreen Friel

Source: About.com

Facts About Mercury in CFLs

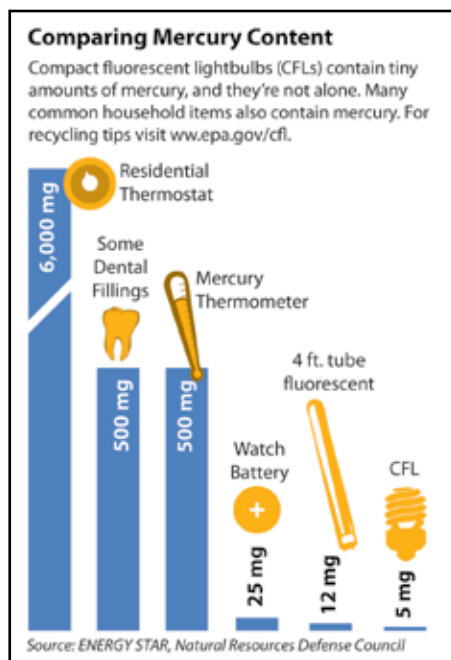
If you read the fine print on the package or find the notice on the base of a CFL bulb, you'll see that it contains mercury.

While that may raise an alarm in your mind, there's no need to worry. The amount of mercury inside the glass tubes of an average CFL is miniscule—about the equivalent to the tip of a ballpoint pen, and it's especially small when compared to other items you may have around your home. The amount of mercury in a CFL runs about 4-5 milligrams (mg), while a glass fever thermometer contains 500 mg, and an old-style thermostat could contain up to 3,000 mg.

CFLs are safe to handle and use in your home, and they release no mercury when in operation. Even if you break a CFL, the amount of mercury that may become airborne poses a very low risk of exposure, says Energy Star®. (To prevent breakage, carefully unpack a CFL, and always screw and unscrew the bulb by its base.) When CFLs burn out or break, the best course of action is to recycle them.

While CFLs fall into the U.S. Environmental Protection Agency (EPA) category of household hazardous waste (HHW), there's no federal or Michigan requirement that

the bulbs be recycled. Some hardware stores and other retailers may have CFL recycling buckets on hand. And, you may be able to dispose of CFLs during your community's annual hazardous waste collection event. Your electric co-op may also accept CFLs



for recycling.

To find out if there's a facility or store near you that accepts CFLs, go to the Earth 911 website at earth911.org, or call 800-CLEANUP. Be sure to call the facility or store that's listed before you make the trip, to ensure that it allows homeowners or apartment dwellers to drop off CFLs.

If one of these recycling options is not available to you, you may put burned-out or broken CFLs with your regular trash—but in no case should you burn or incinerate them. Here's what the EPA says about properly disposing of CFLs.

▶ **Burned-out CFLs:** Put the CFL in a sealed plastic bag, and place it with your regular trash.

▶ **Broken CFLs:** If you break a CFL, open nearby windows to disperse any vapor that may escape, and carefully sweep up the glass shards. (Don't use your hands!) Wipe the area with a damp paper towel to remove glass fragments; don't use a vacuum cleaner. Put the fragments, the base of the bulb, and the paper towel in a sealed plastic bag, and place it with your regular trash.

CFLs will help you cut your utility bills and reduce the need for electricity production. However, to create the maximum benefit for the environment, recycling burned-out and broken CFLs makes sense.

Pumping Up Efficiency

A variety of heat pumps, from geothermal to standard air-source models, are available to efficiently heat and cool your home.

Heat pumps are becoming a more common alternative to central air conditioners no matter what type of existing heating system you have. This is because a heat pump can also heat, as well as cool, your house efficiently. The cost of electricity for heating and cooling a house, although it gradually increases as most prices do over time, is much less volatile than natural gas, oil or propane.

A geothermal heat pump is one of the most energy-efficient heating and cooling systems for any climate. Even though it provides a good long-term payback over its life on the investment, particularly in very hot or cold climates, the initial installation costs are considerably higher than for standard air-source models. Also, depending upon the yard and soil type, it may not be applicable for every house.

A standard air-source heat pump is basically a central air conditioner with a few extra parts. The outdoor unit looks exactly the same as a central air conditioner. It is called a heat pump because it literally pumps heat out of your house (cooling mode) or into your house (heating mode) to or from the outdoor air around the outdoor compressor/condenser unit.

During the summer, in the cooling mode, it draws heat from the indoor air as it passes through the indoor evaporator coils. Through a refrigeration cycle identical to an air conditioner, it expels this heat outdoors. The cooling efficiency is rated by its SEER (seasonal energy efficiency ratio). A heat pump's cooling efficiency is only slightly less than its similar central air conditioner model.

In winter, a reversing valve inside the heat pump outdoor unit switches position. This reverses the flow of the refrigerant throughout the entire system. Instead of running the cool refrigerant through the indoor coil, it runs the hot refrigerant indoors.

The cold refrigerant is run outdoors, where it draws heat from the outside. Since the refrigerant is colder than the outdoor air, it absorbs heat even though the outdoor air may feel cold to you. Heating efficiency is rated by



This heat pump uses a modulating rotary compressor in a stainless steel exterior condenser unit.

HSPF (heating seasonal performance factor).

As it gets colder outdoors, it becomes more difficult for the heat pump to draw heat from the cold outdoor air just as the heating needs of your house increase. At a certain point, the heat pump can no longer provide enough heat to keep your house warm, and the backup heating source comes on. Depending upon the type of backup heat and relative energy costs, your heating/cooling contractor can set the temperature at which the backup takes over.

There are many new developments in standard air-source heat pumps. The modulating, multistage output rotary compressor design, which was first introduced in central air conditioners, is now available in heat pumps. This design produces extremely high efficiencies for both heating and cooling (HSPF=10, SEER=22). You can get \$2 to \$3 worth of heat for each \$1 on your utility bills.

This heat pump uses a rotary compressor with inverter technology to vary its heating or cooling output from about one-third to full capacity output. This not only saves electricity, but produces great comfort, quiet operation, and even room temperatures. Two-stage heat pumps also improve efficiency and comfort over standard single-stage models.

Another new two-stage heat pump design couples a solar panel with the outdoor unit. On a sunny day, this solar panel produces

enough electricity to operate the condenser fan for up to 8 percent electricity savings. When it is not sunny or at night, the outdoor condenser fan runs on electricity like any other heat pump.

A standard low-cost, single-stage heat pump with a scroll compressor will still be efficient and provide comfort, especially when it is coupled with a variable-speed blower.

Even if your indoor air handler seems to be working well, it should be replaced with one compatible with the new efficient outdoor unit. At the very least, the indoor evaporator coil should be replaced with a matching one.

No matter what type of new heat pump you select, make sure your duct system is compatible with it. There should typically be from 400 to 500 CFM (cubic feet per minute) of air flow per ton of cooling through the unit for the best efficiency. Your old duct system may have to be modified.

Have a question for Jim? Send inquiries to James Dulley, Michigan Country Lines, 6906 Royalgreen Dr., Cincinnati, OH 45244, or visit dulley.com.

James Dulley is a nationally recognized mechanical engineer writing about home energy issues for the National Rural Electric Cooperative Association.



HARBOR FREIGHT TOOLS

Quality Tools at Ridiculously Low Prices

LIFETIME WARRANTY
ON ALL HAND TOOLS!

FACTORY DIRECT TO YOU!

How does Harbor Freight Tools sell high quality tools at such ridiculously low prices? We buy direct from the factories who also supply the major brands and sell direct to you. It's just that simple!

See for yourself at one of our 350 Stores Nationwide and use this 20% Off Coupon on one of our 7,000 products*, plus pick up a Free Multipurpose Scissors, a \$4.99 value. We stock Shop Equipment, Hand Tools, Tarps, Compressors, Air & Power Tools, Woodworking Tools, Welders, Tool Boxes, Generators, and much more.

- Over 5 Million New Customers in the Last 2 Years!
- 1 Year Competitor's Low Price Guarantee
- No Hassle Return Policy!
- 100% Satisfaction Guaranteed!

Nobody Beats Our Quality, Service and Price!

FREE!
WITH MINIMUM PURCHASE OF \$9.99

MULTIPURPOSE SCISSORS
ITEM 47877/67405
• Stainless Steel Blades

Item 47877 shown
REG. PRICE \$4.99

HARBOR FREIGHT TOOLS - LIMIT 1 Free item only available with qualifying minimum purchase (excluding price of free gift item). Cannot be used with any other discount or coupon. Coupon not valid on prior purchases. Offer good while supplies last. Shipping & Handling charges may apply if free item not picked up in-store. Coupon cannot be bought, sold or transferred. Original coupon must be presented in-store, or with your order form, or entered online in order to receive the offer. Valid through 1/5/12. Limit one coupon per customer and one coupon per day.

86175012

20% OFF
ANY SINGLE ITEM!

HARBOR FREIGHT TOOLS - LIMIT 1 Use this coupon to save 20% on any one single item purchased when you shop at a Harbor Freight Tools store. *Cannot be used with any other discount or coupon. Coupon not valid on all of the following: gift cards, Inside Track Club membership, extended service plans, Compressors, Generators, Tool Cabinets, Welders, Floor Jacks, Campbell Hausfeld products, open box items, Parking Lot Sale items, Blowout Sale items, Day After Thanksgiving Sale items, Tent Sale items, 800 number orders or online orders. Coupon not valid on prior purchases after 30 days from original purchase date with original receipt. Coupon cannot be bought, sold, or transferred. Original coupon must be presented in-store in order to receive the offer. Valid through 1/5/12. Limit one coupon per customer and one coupon per day.

88931009

3" HIGH SPEED CUT-OFF TOOL
LOT NO. 47077/67425

SAVE 65%
REG. PRICE \$19.99

CENTRAL PNEUMATIC
Item 47077 shown

HARBOR FREIGHT TOOLS - LIMIT 7 This valuable coupon is good anywhere you shop Harbor Freight Tools (retail stores, online, or 800 number). Cannot be used with any other discount or coupon. Coupon not valid on prior purchases after 30 days from original purchase date with receipt. Offer good while supplies last. Coupon cannot be bought, sold, or transferred. Original coupon must be presented in-store, or with your order form, or entered online in order to receive the coupon discount. Valid through 1/5/12. Limit one coupon per customer and one coupon per day.

97832517

12 VOLT MAGNETIC TOWING LIGHT KIT
LOT NO. 96933/67455

SAVE 66%
REG. PRICE \$29.99

HaulMaster
Item 96933 shown

HARBOR FREIGHT TOOLS - LIMIT 8 This valuable coupon is good anywhere you shop Harbor Freight Tools (retail stores, online, or 800 number). Cannot be used with any other discount or coupon. Coupon not valid on prior purchases after 30 days from original purchase date with receipt. Offer good while supplies last. Coupon cannot be bought, sold, or transferred. Original coupon must be presented in-store, or with your order form, or entered online in order to receive the coupon discount. Valid through 1/5/12. Limit one coupon per customer and one coupon per day.

20517866

3 PIECE TITANIUM NITRIDE COATED HIGH SPEED STEEL STEP DRILLS
drillmaster
LOT NO. 91616

SAVE 40%
REG. PRICE \$14.99

HARBOR FREIGHT TOOLS - LIMIT 8 This valuable coupon is good anywhere you shop Harbor Freight Tools (retail stores, online, or 800 number). Cannot be used with any other discount or coupon. Coupon not valid on prior purchases after 30 days from original purchase date with receipt. Offer good while supplies last. Coupon cannot be bought, sold, or transferred. Original coupon must be presented in-store, or with your order form, or entered online in order to receive the coupon discount. Valid through 1/5/12. Limit one coupon per customer and one coupon per day.

57434419

OSCILLATING MULTIFUNCTION POWER TOOL
LOT NO. 68303/67256

SAVE 66%
REG. PRICE \$59.99

8 Functions: Sanding, Cut Flooring, Cut Metal, Scrape Concrete, Remove Grout, Cut Plastic, Scrape Flooring, Plunge Cut

HARBOR FREIGHT TOOLS - LIMIT 5 This valuable coupon is good anywhere you shop Harbor Freight Tools (retail stores, online, or 800 number). Cannot be used with any other discount or coupon. Coupon not valid on prior purchases after 30 days from original purchase date with receipt. Offer good while supplies last. Coupon cannot be bought, sold, or transferred. Original coupon must be presented in-store, or with your order form, or entered online in order to receive the coupon discount. Valid through 1/5/12. Limit one coupon per customer and one coupon per day.

41369961

6" DIGITAL CALIPER
PITTSBURGH
LOT NO. 47257

SAVE 66%
REG. PRICE \$29.99

Includes two 1.5V button cell batteries.

HARBOR FREIGHT TOOLS - LIMIT 6 This valuable coupon is good anywhere you shop Harbor Freight Tools (retail stores, online, or 800 number). Cannot be used with any other discount or coupon. Coupon not valid on prior purchases after 30 days from original purchase date with receipt. Offer good while supplies last. Coupon cannot be bought, sold, or transferred. Original coupon must be presented in-store, or with your order form, or entered online in order to receive the coupon discount. Valid through 1/5/12. Limit one coupon per customer and one coupon per day.

68548030

3 GALLON 100 PSI OILLESS PANCAKE AIR COMPRESSOR
LOT NO. 95275

SAVE 40%
REG. PRICE \$74.99

CENTRAL PNEUMATIC

HARBOR FREIGHT TOOLS - LIMIT 5 This valuable coupon is good anywhere you shop Harbor Freight Tools (retail stores, online, or 800 number). Cannot be used with any other discount or coupon. Coupon not valid on prior purchases after 30 days from original purchase date with receipt. Offer good while supplies last. Coupon cannot be bought, sold, or transferred. Original coupon must be presented in-store, or with your order form, or entered online in order to receive the coupon discount. Valid through 1/5/12. Limit one coupon per customer and one coupon per day.

5309253

105 PIECE TOOL KIT
LOT NO. 4030

SAVE 46%
REG. PRICE \$64.99

4 DRAWER TOOL CHEST INCLUDED!

CENTRAL FORGE

HARBOR FREIGHT TOOLS - LIMIT 4 This valuable coupon is good anywhere you shop Harbor Freight Tools (retail stores, online, or 800 number). Cannot be used with any other discount or coupon. Coupon not valid on prior purchases after 30 days from original purchase date with receipt. Offer good while supplies last. Coupon cannot be bought, sold, or transferred. Original coupon must be presented in-store, or with your order form, or entered online in order to receive the coupon discount. Valid through 1/5/12. Limit one coupon per customer and one coupon per day.

147274305

800 RATED WATTS/ 900 MAX WATTS PORTABLE GENERATOR
CHICAGO Electric Generators

SAVE \$60
REG. PRICE \$149.99

LOT NO. 66619

HARBOR FREIGHT TOOLS - LIMIT 3 This valuable coupon is good anywhere you shop Harbor Freight Tools (retail stores, online, or 800 number). Cannot be used with any other discount or coupon. Coupon not valid on prior purchases after 30 days from original purchase date with receipt. Offer good while supplies last. Coupon cannot be bought, sold, or transferred. Original coupon must be presented in-store, or with your order form, or entered online in order to receive the coupon discount. Valid through 1/5/12. Limit one coupon per customer and one coupon per day.

41240639

11 DRAWER ROLLER CABINET
LOT NO. 67421

INCLUDES:
• 6 Drawer Top Chest
• 2 Drawer Middle Section
• 3 Drawer Roller Cabinet

SAVE \$150
REG. PRICE \$299.99

US GENERAL

HARBOR FREIGHT TOOLS - LIMIT 5 This valuable coupon is good anywhere you shop Harbor Freight Tools (retail stores, online, or 800 number). Cannot be used with any other discount or coupon. Coupon not valid on prior purchases after 30 days from original purchase date with receipt. Offer good while supplies last. Coupon cannot be bought, sold, or transferred. Original coupon must be presented in-store, or with your order form, or entered online in order to receive the coupon discount. Valid through 1/5/12. Limit one coupon per customer and one coupon per day.

37901338

RECIPROCATING SAW WITH ROTATING HANDLE
LOT NO. 65570

SAVE 50%
REG. PRICE \$39.99

CHICAGO ELECTRIC POWER TOOLS

HARBOR FREIGHT TOOLS - LIMIT 6 This valuable coupon is good anywhere you shop Harbor Freight Tools (retail stores, online, or 800 number). Cannot be used with any other discount or coupon. Coupon not valid on prior purchases after 30 days from original purchase date with receipt. Offer good while supplies last. Coupon cannot be bought, sold, or transferred. Original coupon must be presented in-store, or with your order form, or entered online in order to receive the coupon discount. Valid through 1/5/12. Limit one coupon per customer and one coupon per day.

74833052

PITTSBURGH AUTOMOTIVE RAPID PUMP® 1.5 TON ALUMINUM RACING JACK
LOT NO. 68053

SAVE \$40
REG. PRICE \$99.99

3-1/2 PUMPS LIFTS MOST VEHICLES!

HARBOR FREIGHT TOOLS - LIMIT 4 This valuable coupon is good anywhere you shop Harbor Freight Tools (retail stores, online, or 800 number). Cannot be used with any other discount or coupon. Coupon not valid on prior purchases after 30 days from original purchase date with receipt. Offer good while supplies last. Coupon cannot be bought, sold, or transferred. Original coupon must be presented in-store, or with your order form, or entered online in order to receive the coupon discount. Valid through 1/5/12. Limit one coupon per customer and one coupon per day.

67542043

3 EASY WAYS TO SHOP!

1. VISIT! 350 Stores Nationwide **2. GO TO!** www.HarborFreight.com **3. CALL!** 1-800-423-2567

Bone Up on Bone Health

Poor bone health has become a widespread health problem, but healthy diets and active lifestyles from an early age can help change this scenario.

Instead of enjoying their “golden years,” many seniors face curtailed activities and bouts with fractures. “More than half of Americans over the age of 50 develop osteoporosis, and it’s four times more common in women than men,” stresses Dr. J. Edward Puzas, PhD, a professor of orthopedics at the University of Rochester Medical Center in New York. “Once your bones become thinner and more fragile, you’re more apt to suffer fractures. If you’re elderly, this can be fatal.”

Osteoporosis is linked to a lack of dietary



Regular exercise from an early age promotes bone health.

calcium, which is critical to bone health. The average American consumes far less calcium than needed. Exercise is also essential to keeping strong bones.

Calcium is used by the body to form and maintain healthy bone tissue, and because 90 percent of our adult bone mass is already formed by 17, healthy diets and active life-

styles are important at an early age. Kids need about 1,500 mg of calcium per day. From about age 17, the process of maintaining healthy bones begins, and calcium intake should be a minimum of 1,000 mg per day through age 50. Calcium needs return to 1,500 mg per day for ages 50 and older, especially for post-menopausal women.

Various foods are high in calcium, such as dairy products—skim and 2 percent milk are just as rich in calcium as regular milk—deep green, leafy vegetables, soy, tofu and almonds. Certain items, such as some orange juices, cereal and bread, are now also fortified with calcium.

To determine how many milligrams per serving is in an item, find calcium listed on the food label, and add a zero to the daily value percentage. Many people turn to supplements to ensure enough calcium consumption, but a balanced diet is best for overall health. Supplements must have added vitamin D, as this aids your body in getting the calcium to your bones.

Exercise is the second key to bone health because it causes new bone tissue to grow and makes bones stronger. During weight-bearing exercise, muscles push and pull against the attached bones, strengthening them. Walking or running and weight training are great for bone health, too. Adults need 30 minutes of exercise daily, while kids need 60 minutes each day.

No matter what age, taking steps to achieve a well-balanced diet and active lifestyle are essential to healthy bones and an all-around healthy body.

—Holly Israel

Sources: U.S. Department of Health and Human Services; National Institute of Child Health & Human Development; Health.com

Time to Get Moving

Walk off health worries? Dance away from disease? According to the Harvard School of Public Health, exercise can help you maintain a healthy weight, lower stress and prevent chronic problems like heart disease, diabetes, osteoporosis and certain types of cancer.

Despite these benefits, only 30 percent of Americans engage in regular physical activity, while 40 percent almost never exercise. The American College of Sports Medicine recommends healthy adults fit in at least 30 minutes of moderate-intensity aerobic activity five days a week.

This includes brisk walking—ideal since it requires no equipment, specific time or place, and can be done at each individual’s pace—as well as chopping wood, mowing the lawn with a push mower, or even dancing. In a workplace setting, use stairs instead of the elevator, park your car further away from the entrance, or take a walk for 20-30 minutes during a lunch hour.

For a more vigorous approach, work out for at least 20 minutes three days per week. A “vigorous” workout should result in a higher



heart rate, rapid breathing, and conversation occurring in shorter sentences. Jogging is a good example of a more vigorous activity.

Pump it Up

As you age, strength training helps you maintain the ability to perform everyday tasks such as climbing stairs, carrying your own groceries, etc. Get guidance from an expert in this area.

Flexibility training is the final component to any exercise routine. Stretching for 5 minutes before and after workouts reduces soreness and injury, and aids in preserving the range of movement needed to function normally.

If your present lifestyle is sedentary, begin exercising slowly and gradually increase the duration of your workouts. The health benefits will be noticeable. Remember that some movement is better than none, and more is even better!

Editor’s Note: Before beginning any exercise regimen, please consult a physician.



Officers Elected – Cloverland’s board of directors re-elected District B Director Robert Schallip as president (left) and District A Director Richard Newland (right) as secretary/treasurer. District A Director Dale Carlson (center) was elected the new vice president.

Easy Ways to Pay Your Bill

■ **Pay in person:** Pay your bill at our offices in Sault Ste. Marie (Lighthouse. Net), Dafter, Newberry and DeTour Village or any of our convenient pay stations. We accept cash, check, money order, credit or debit. Visit cloverland.com for a list of pay stations near you.

■ **Pay by phone:** Call our toll free number at 800-562-4953. Member service representatives are available 8 a.m. to 4:30 p.m., Monday-Friday.

■ **Auto-Pay:** The co-op automatically deducts the amount due each month from your checking/savings account or credit/debit card.

■ **Pay online:** Visit cloverland.com and set-up a user name and password to view and pay your bills online. After that, you can log-in anytime to pay your bill by credit/debit card or e-check.



Increase energy efficiency. And your bottom line.

Cloverland Electric Cooperative helps commercial and industrial members **save energy** and **protect the environment** through energy efficiency improvement projects and valuable rebates. Eligible projects include:

- Lighting
- HVAC
- Refrigeration
- Food Service Equipment
- Motors, Fans, Pumps & Drives

In order to qualify for incentives within the Commercial and Industrial Programs, applicants MUST obtain written approval prior to any installations. Please call 1-877-296-4319 or email EnergyOptimization@FranklinEnergy.com for pre-approval.

COMMERCIAL & INDUSTRIAL PROGRAMS

RESIDENTIAL PROGRAMS

Start Saving at Home!

Cloverland Electric Cooperative offers its residential members:

- Rebates on ENERGY STAR® products, heating & cooling systems and energy efficient home improvements
- Appliance recycling
- FREE Online Home Energy Assessments
- No-cost energy efficiency improvements for income-qualified households

Items purchased must be installed in a home that receives service from Cloverland Electric Cooperative. For residential accounts only while supplies last. Restrictions may apply.

Learn about our programs at michigan-energy.org • Questions? 877.296.4319

BUSINESS OPPORTUNITIES

PIANO TUNING PAYS – Learn with American Tuning School home-study course. Tools included. 800-497-9793.

CARS & TRUCKS

LOW MILEAGE ENGINES – Big savings. Price includes delivery and 1-year parts warranty. Mileage verified. Call today! 901-266-9996. lowmileageengines.com

MISCELLANEOUS

PURE MAPLE SUGAR – And syrup maker's equipment. Dodd's Sugar Shack, Niles, MI. 269-683-3283.

OUTDOORS

GARY'S STUMP GRINDING – Cheaper by the dozen. 800-870-3871 or 231-587-9296.

DRAG LINE - \$6,000. 248-249-0355.

REAL ESTATE

163.8 ACRES, ISABELLA COUNTY – Beautiful piece of hunting property. Small older trailer, small barn, electric, pond, mixture of cedar swamp, wooded rolling high ground, and 20 tillable acres, \$320,000. 616-209-2230.

KALKASKA COUNTY HUNTING CAMP – 80 acres; 7 blinds; 5,000 new trees; 2 pole barns, one has kitchen, 2 baths, sleeps 10+. Quarter-mile on blacktop, half on 2-track. 9 miles to Higgins Lake, 20 to Houghton. Owner retiring. Asking \$234,000. 810-231-1383.

BREVOORT LAKE, UPPER PENINSULA – 3-bedroom, 1-bath cottage. Stone fireplace, deck, storage shed, on 100' x 740' lot. 906-293-8770.

MECOSTA COUNTY – 100-ft. waterfront home on 27-acre lake, 2-bedroom, 2 1/2-bath. Also guest cabin, garages. \$127,000. mls# 851-95. 989-775-1358.

HOME ON MUNISING BAY – 1315 Lake St., Munising, MI. 810-376-0030.

LOT ON ST. JOSEPH RIVER – South of Three Rivers, restricted subdivision. 269-279-5838.

159 ACRES, MARQUETTE COUNTY – Very private, large cabin, great deer area, trout stream runs through property. Watch video under real estate at carvingsbyellen.com. 231-730-5053.

GRAYLING ADULT FOSTER CARE HOME – Six private rooms. 231-649-6842.

WANTED: EASTERN U.P. ACREAGE – Will trade developed 6.5 acres in Florida Panhandle. 989-732-4767.

WANTED

BUYING OLD WOODEN DUCK – Goose, fish decoys. 248-877-0210.

DOODLE BUG TRACTORS – 1947 to 1956 Ford or Chevy pick-up, 1935 to 1942 Dodge/Plymouth car or truck. 231-652-6421.

BUYING GUN RELOADING EQUIPMENT – Gun smithing, gun parts and related items. 517-623-0416.

Notice to Large Commercial and Industrial Members

Public Act 295 allows for large Commercial and Industrial (C&I) accounts to self-direct their own Energy Optimization Plans. For this year, a C&I member must have at least 1 megawatt (MW) of annual peak demand in 2010 (or 5 MW in aggregate) to qualify.

Details can be found at:
michigan.gov/mpsc/0,1607,7-159-52495_54478---,00.html or call your electric co-op for more information.

Pre-Assembled Installs in Minutes!

CasCade 4000
Floating POND FOUNTAIN! Elegance & Improved Water Quality

Aerator
MSRP (\$1100) You Pay \$649.85!
Complete with light & timer, 100 ft power cord, 1yr warranty!

Call 7days/week! (608) 254-2735 FAST UPS shipping right to your door! www.fishpondaerator.com

Handicap Tub Access

Our walk-thru opening converts your tub into a shower. Be safe with our slip-resistant bottom and grab bars. Very affordable!! ****REPAIRS****

Great Lakes Fiberglass
giffc@yahoo.com • 989-614-6344

FUTURE STEEL BUILDINGS
Do-It-Yourself Steel Buildings

Ideal For:

- Recreational Use
- Boat Storage
- Bunkie
- Equipment Storage
- Garage/Shop
- PWC/Snowmobile

• 30-year perforation warranty
• Full technical support from start to finish
• Fully customized to meet your needs
• Factory-direct savings

Call Toll Free Today for a **FREE!** INFORMATION PACKAGE

Our building consultants are ready to take your call **1-800-668-5111** Ask for ext. 91

Michigan COUNTRY LINES

Reach over 270,000+ households!

Classified ad rates:

- ▲ \$1.50 per word or symbol (\$15 min.) for co-op members running nonbusiness ads
- ▲ \$3 per word or symbol (\$30 min.) for co-op members running business, agent or broker ads; and all ads for non-co-op members

Each initial, group of figures, phone number, abbreviation, e-mail address and website address counts as one word. Hyphenated and slashed words count as two or more words. Ads are subject to editor's approval and editing and are only accepted as space permits. For member rate, attach your mailing label.

Send your printed or typed ad and check or money order made payable to MECA (**advance payment required**) by 15th of month prior to publication to: Country Lines, 2859 W. Jolly Rd., Okemos, MI 48864, or email classifieds@countrylines.com. **WE NO LONGER ACCEPT DIRECT CREDIT CARD PAYMENTS FOR CLASSIFIED ADS**, but you can use a credit or debit card to place your order online using PayPal at countrylines.com/classifieds.

Call 517-351-6322, ext. 208, for more information. **No classifieds accepted by telephone.** Ads will be posted on countrylines.com for no extra charge until the next issue of the magazine is published.

2012 Alaska Tours

13-Day Cruise and Tour

From \$1,898*

*Includes tax & services

Space is filling quickly on this unique and popular tour departing June through September 2012. Fly to San Francisco, travel to Napa/Sonoma Valley to board the Amtrak Coast Starlight to Seattle. Here you'll board Norwegian Cruise Line's Star for your 7 night cruise to Ketchikan, Juneau, Sawyer Glacier, Skagway and Prince Rupert B.C. before heading back to Seattle. Call for low cost airfare.



Holland America Line



Alaska Cruise and the Canadian Rockies

From \$1,898*

*Includes Port charges, tax & services

DEPART MAY THRU SEPT 2012

Visit the last of the wilderness-like areas in North America, all from the comfort of your deluxe motor coach and cruiseship. Fly into Seattle, WA, the next day travel to Vancouver, B.C. where you'll board your 5-STAR cruise ship for your seven-day Holland American Line cruise. Experience some of the most awe inspiring scenery as you travel to Juneau, Skagway, Glacier Bay and Ketchikan. After your cruise you'll begin your scenic six-day motor coach tour to Calgary, AB. You'll visit Jasper National Park, take a "SnowCoach" ride over the Columbia Ice Fields, visit Banff National Park, Lake Louise and Calgary. Call for low cost airfare.



Call for Information & Itinerary

800-888-8204

It's time to travel

CLEARs ACRES OF LEAVES *plus* FOLDS UP FLAT!



Why use a lawn vacuum that takes half your garage to store?

The Cyclone Rake folds up flat, just 8 inches thick. It even hangs on the wall. Yet does a job that would take a whole landscape crew, or days of hard work, any other way. It hitches to nearly any riding mower or ZTR. With its own powerful engine-driven vacuum-mulcher and huge hauling capacity, you can clear the heaviest leaf cover with sitting-down ease. Backed by a full year risk-free return policy and a 3-year warranty, it's the homeowner's answer to easy fall cleanup!

REQUEST A FREE, CATALOG AND DVD

1-800-569-4473

or visit www.CycloneRake.com

Mention the Discount Code **MC911** when you call, or enter it on our web site for a special discount on any Cyclone Rake model.

©Woodland Power Products, Inc., 72 Acton St., West Haven, CT 06516

10 Showcase Homes Wanted!
Call to See if Your Home Qualifies

888-221-1869

DESIGNER METAL ROOFS!

Get A New Permanent Roof For As Low As

\$241/Month*

ALL APPLICATIONS ARE ACCEPTED!

- ✓ FICO Score As Low As 620
- ✓ Bankruptcy is No Problem
- ✓ Collections are Not a Worry
- ✓ No Appraisal Required
- ✓ No Equity In Home Required

Apply Today For Our **Blue Sky Financing Program**

LET US PROVE WHY AMERICAN METAL ROOFS IS YOUR BEST OPTION

See our Photo Gallery and Apply Online at

www.AmericanMetalRoofs.com

Visit the American Metal Roofs Showrooms at

6140 Taylor Dr, Flint, MI 48507 and 1875 Lansing Rd, Charlotte, MI 48813



*Promotion may not be combined with any other offers. Some restrictions apply. Call for details. Promotion is based on approved credit. Applies to purchases made on American Metal Roofs consumer credit program. \$241 monthly payment calculations based on a \$25,000 purchase at 9.99% APR for 20 years. Your interest may be deductible. Consult a tax advisor. MI Contractor License #2102158513

SAFETY Matters



We've all seen it: Too few electrical outlets in your office means that your computer, printer, monitor, scanner, CD player, lamp, cell phone and iPod charger are all plugged into one inexpensive, overloaded power strip. It's pretty unsightly, but did you know that the practice is also dangerous?

Overloaded electrical circuits pose a safety hazard. We can't always control the number of outlets in our offices, but the Electrical Safety Foundation International recommends staying safe with these electrical hazard tips:

- ▶ If you use a power strip, use a name-brand product from a reputable retailer. Low-quality or counterfeit units may contain wiring that isn't adequate to carry the load.
- ▶ Place power strips where there is plenty of air circulation to disperse heat.
- ▶ Do not attempt to plug grounded (three-prong) cords into ungrounded (two-slot) outlets.
- ▶ Do not bind, kink or knot electrical cords.
- ▶ Never run power cords under rugs or where chairs can roll over them, and keep them close to a wall to avoid trip hazards.
- ▶ Keep all non-critical electrical items unplugged until you need to use them.
- ▶ Consider charging battery-operated devices in another area.

Visit electrical-safety.org for more safety tips.

Stay safe and reduce your energy use. Special pricing is available on Smart Power Strips through your co-op. Order yours today for only \$9.95 at michigan-energy.org!

Jim Mackie is Cloverland's safety and loss prevention coordinator.
906-632-5152
jsmackie@cloverland.com

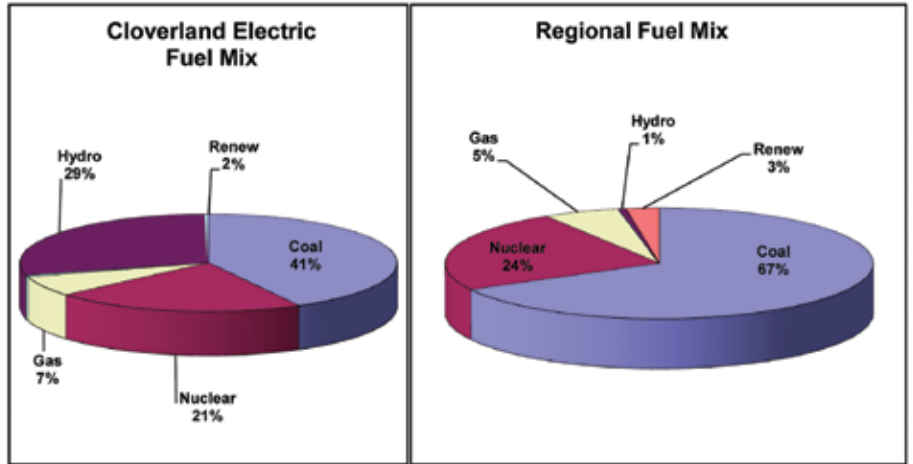


Cloverland Electric Cooperative

The environmental characteristics of your electricity as required by Public Act 141 of 2000.

Comparison of the Fuel Sources Used to Generate Electricity

Cloverland Electric Cooperative vs. regional average for the 12-month period ended 06/30/11.



Fuel Sources	Percentage of fuel types used to produce Cloverland Electric Cooperative electricity.	Percentage of fuel type used to produce electricity in Michigan, Illinois, Indiana, Ohio, and Wisconsin (12/31/10).
Coal	41.0	67.1
Nuclear	21.0	24
Gas	6.5	5.4
Oil	0.5	0.4
Hydroelectric	28.5	0.6
Total Renewable Fuels	2.0	2.7
Biomass	0.5	0.1
Biofuel	0	0.3
Solid Waste Incineration	0	0.5
Wind	1	1.3
Wood	0	0.5
Solar	0.5	0

Airborne Emissions and High-Level Nuclear Waste Comparison

Cloverland Electric Cooperative vs. regional average for the 12-month period ended 06/30/11.

Type of emission/waste	Cloverland Electric average lbs/MWh	A regional average of all generation in Michigan, Illinois, Indiana, Ohio, and Wisconsin
Sulfur Dioxide	1.9	8.2
Carbon Dioxide	1,585	2186
Oxides of Nitrogen	1.1	2
High-level nuclear waste	0	0.0083

Access to Rules and Rates

This notice is published pursuant to the rules established by the Michigan Public Service Commission as set forth in the Consumer Standard and Billing Practices for Electric and Gas Residential Services, R460, 2146 and 2149.

As a member-customer of Cloverland Electric Cooperative, the following information is available to you upon request:

- 1) Complete rate schedules;
- 2) Clear and concise explanation of all rates that the member may be eligible to receive;
- 3) Assistance from the cooperative in determining the most appropriate rate for the member when the member is eligible to receive service under more than one rate;
- 4) Clear, concise explanation of actual energy use for each billing.

STATE OF MICHIGAN

BEFORE THE MICHIGAN PUBLIC SERVICE COMMISSION

NOTICE OF HEARING FOR THE CUSTOMERS OF CLOVERLAND ELECTRIC COOPERATIVE, GREAT LAKES ENERGY COOPERATIVE, MIDWEST ENERGY COOPERATIVE, ONTONAGON COUNTY RURAL ELECTRIFICATION ASSOCIATION, PRESQUE ISLE ELECTRIC & GAS CO-OP, and THUMB ELECTRIC COOPERATIVE

CASE NOS. U-16681, U-16682, U-16683, U-16684, U-16685, and U-16686

- The Michigan Public Service Commission will review Cloverland Electric Cooperative's, Great Lakes Energy Cooperative's, Midwest Energy Cooperative's, Ontonagon County Rural Electrification Association's, Presque Isle Electric & Gas Co-Op's, and Thumb Electric Cooperative's (the Cooperatives) plan to meet the energy optimization requirements in compliance with Public Act 295 of 2008 and the Michigan Public Service Commission Orders in Case No. U-15800, dated December 4, 2008 and the above captioned cases, dated March 17, 2011.

- The information below describes how a person may participate in this case.

- You may call or write the Cooperatives' attorney, Mr. Shaun M. Johnson, at Dykema Gossett PLLC, Capitol View, 201 Townsend Street, Suite 900, Lansing, MI 48933, Phone: 517.374.9100 for a free copy of the application. Any person may review the application at Dykema's offices or at the respective offices of the Cooperatives.

- The second public hearing in this matter will be held:

DATE/TIME: September 27, 2011, at 10 a.m. This hearing will be a prehearing conference to set future hearing dates and decide other procedural matters.

BEFORE: Administrative Law Judge Theresa A. Sheets

LOCATION: Michigan Public Service Commission, 6545 Mercantile Way, Suite 7, Lansing, Michigan

PARTICIPATION: Any interested person may attend and participate. The hearing site is accessible, including handicapped parking. Persons needing any accommodation to participate should contact the Commission's Executive Secretary at (517) 241-6160 in advance to request mobility, visual, hearing or other assistance.

The Michigan Public Service Commission (Commission) will hold a public hearing to consider the joint application of the above named cooperatives to meet their energy optimization requirements, including energy optimization surcharges to be filed by August 1, 2011, in accordance Public Act 295 of 2008, and the December 4, 2008 and March 17, 2011 Commission orders in Case Nos. U-15800 and the captioned cases listed above, respectively.

All documents filed in this case shall be submitted electronically through the Commission's E-Dockets website at: michigan.gov/mpscedockets. Requirements and instructions for filing can be found in the User Manual on the E-Dockets help page. Documents may also be submitted, in Word or PDF format, as an attachment to an email sent to: mpscedockets@michigan.gov. If you require assistance prior to e-filing, contact Commission staff at (517) 241-6180 or by email at: mpscedockets@michigan.gov.

Any person wishing to intervene and become a party to the case shall electronically file a petition to intervene with this Commission by September 26, 2011. (Interested persons may elect to file using the traditional paper format.) The proof of service shall indicate service upon the Cooperatives' attorney, Shaun M. Johnson, at Dykema Gossett PLLC, Capitol View, 201 Townsend Street, Suite 900, Lansing, Michigan 48933.

Any person wishing to make a statement of position without becoming a party to the case, may participate by filing an appearance. To file an appearance, the individual must attend the hearing and advise the presiding administrative law judge of his or her wish to make a statement of position. All information submitted to the Commission in this matter will become public information: available on the Michigan Public Service Commission's website, and subject to disclosure.

Requests for adjournment must be made pursuant to the Commission's Rules of Practice and Procedure R 460.17315 and R 460.17335. Requests for further information on adjournment should be directed to (517) 241-6060.

A copy of the Cooperatives' request may be reviewed on the Commission's website at: michigan.gov/mpscedockets, and at the office of Dykema Gossett PLLC, Capitol View, 201 Townsend Street, Suite 900, Lansing, MI; or at the respective Cooperatives' offices. For more information on how to participate in a case, you may contact the Commission at the above address or by telephone at (517) 241-6180.

Jurisdiction is pursuant to 1909 PA 106, as amended, MCL 460.551 et seq.; 1919 PA 419, as amended, MCL 460.54 et seq.; 1939 PA 3, as amended, MCL 460.1 et seq.; 1969 PA 306, as amended, MCL 24.201 et seq.; 2008 PA 295, MCL 460.1001 et seq., and the Commission's Rules of Practice and Procedure, as amended, 1999 AC, R 460.17101 et seq.

Road Trippin'

We're taking a trip. A great American road trip. The kind every family yearns to go on at least once. The kind Simon and Garfunkel sang about in "America" (after hitchhiking from Saginaw). Except this time, Barbara and I are going out west alone.

We tried once, in 1991, to make the trip with our boys, Dan and Jon, then 12 and 10. For once, we were prepared. The Voyager minivan was packed for fishing, camping and hiking, and intermittent motel stops were scheduled as a reprise from mosquitos and dirt. We made it all the way to Newton, IA, the first day. We went to sleep there with dreams of sleeping under the stars in Rocky Mountain National Park the next night.

In the early morning, Dan woke feverish, so stiff-jointed he couldn't walk, achy all over and puffed up. The symptoms were very similar to what, a decade later, would be called West Nile Virus, a mosquito-borne virus that can be fatal to humans and horses. We were scared. With help from the motel folks, we contacted the Children's Center at the University of Iowa Medical Center and then drove 85 miles back east to check Dan in. The doctors and nurses there were outstanding. Every infectious-disease specialist on staff examined him. Finally, they admitted they were stumped but were convinced whatever he had wasn't fatal.

We stayed overnight in a local hotel, ate pizza and watched "The Hunt for Red October" on HBO. We returned to the hospital in the morning. Then and there the doctors killed our great adventure. Although they didn't know what was wrong with Dan, he was too sick to go camping away from medical care. They told us to go home, and that's where we spent the rest of our three-week vacation. With school and sports competing for time, we never again got a chance to put together a vacation this long. After several months, Dan recovered fully ("We think," we tease him).

Just a few weeks after we came home, a newspaper told of a virus outbreak among

children in Texas that presented symptoms similar to Dan's, and was given the name Palomino Virus. Barbara shared the news clipping with the doctors at UI. We speculated that Dan may have come into contact with the virus from a Texas student attending Michigan State University's summer camp for kids the week before we left on our trip. We'll never know for sure, but we'll always feel warmly toward the folks in Iowa—even when they play the Spartans—for their care and kindness.

That virus must have done something to Dan, because he now lives in Texas and has cowboy boots.

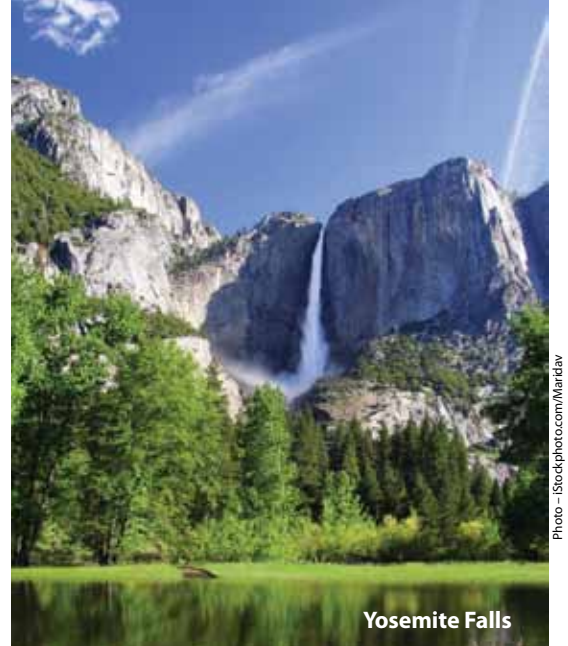
We've taken other family trips, but not all together to the West Coast. Jon lived in San Diego for awhile; I helped move him in a quick road trip a few years ago, and we flew to visit him there. But Barbara and I have not yet taken that quintessential American western road trip together. I think we should go while we can.

Our mid-point goal is Yosemite National Park, where we hope to avoid being swept over a waterfall. On the way out, we'll see Mt. Rushmore, Yellowstone National Park, the California coastline, and wine country. We'll visit friends and family scattered along the way, including my mom and dad, who just moved into a new assisted care home in Minnesota.

After Yosemite, we'll head south to San Diego and then east to Phoenix. More family. The next leg of the trip will most likely be through magnificent southern Utah, which Barbara has not seen, then east through Colorado and the Nebraska flatlands, up to Chicago to see Jon, and back home to Mason. Or, maybe we'll drive all the way to Austin to see Dan and friends before swinging north.

This trip will be different in one important way: technology. We'll have GPS, cell phones, ebooks and an iPod loaded with traveling music. They didn't exist in 1991.

Much of this trip goes through electric co-op country, wide-open spaces where there are few people, but plenty of cattle



Yosemite Falls

and crops. After working for Michigan electric co-ops for 30 years, I should feel right at home. Maybe we'll bring along a co-op directory just in case something goes wrong.

In case you're thinking we should spend our travel time in Michigan, I'll say that we're familiar with every nook and cranny in the state. It's time for something new. When we return, Michigan's attractions, like Mackinac Island, Pictured Rocks and Sleeping Bear Dunes, will still be among our favorite places.

Which reminds me of a newly married couple from England we met last year on Mackinac. They drove 15 hours from Philadelphia so the bride could spend one night in the Grand Hotel, where the movie "Somewhere in Time" takes place. That's a serious travel commitment.

Are we pushing it to try doing this in three weeks? If we can't, I will feel like a real wimp after reading that a 68-year-old woman and her husband just biked over 2,300 miles in 41 days from Texas to Michigan to attend her 50th high school reunion.

If you have any suggestions for our trip, like places to see, great restaurants or bakeries, let us know (mike.f.buda@gmail.com). We'll add you to our email list for travel updates.

Thanks for joining us.

Mike Buda is editor emeritus of Country Lines. Email Mike at mbuda@countrylines.com or comment on his columns at countrylines.com/column/ramblings





IS YOUR HEATING BILL EXCESSIVE?

Are you tired of fossil fuel prices spiraling upward every year - even as oil companies set new records for profit? **Then switch to a WaterFurnace geothermal heat pump.** A WaterFurnace geothermal system uses the **clean, renewable energy** stored in your backyard to **save up to 70% on heating, cooling and hot water.** It's the environmental equivalent to planting an acre of trees or taking two cars off the road. It's good for the environment, it's great for your budget and thanks to a **30% federal tax credit**, now is the best time to act. Contact your local WaterFurnace dealer or visit waterfurnace.com right now for more information.

YOUR LOCAL WATERFURNACE DEALERS

Bad Axe
B & D Heating
(989) 269-5280

Berrien Springs
WaterFurnace Michiana
(269) 473-5667

Big Rapids
Stratz Heating & Cooling
(231) 796-3717

Caro
All-Temp Heating
(989) 673-5557

Charlevoix
Ballard's and Great Lakes
Plumbing & Heating
(231) 547-1035

Cheboygan
Jim's Handyman
(231) 627-7533

Carsonville
Certified Temperature Innovations
(810) 300-7748

DeWitt
S & J Htg & Clg
(517) 669-3705

Gaylord
Family Htg & Clg
(989) 732-8099

Grand Rapids
Montgomery Htg & Clg
(616) 459-0261

Hart
Adams Htg & Clg
(231) 873-2665

Harbor Springs
Ballard's and Great Lakes
Plumbing & Heating
(231) 526-6859

Ionia
Home Experts
(800) 457-4554

Kalamazoo
E M Sergeant
(800) 530-1363

Lapeer
Porter & Heckman
(810) 664-8576

Michigan Center
Comfort 1 Heating /
Lenawee Heating
(517) 764-1500

Mount Pleasant
Walton's Htg & Clg
(989) 772-4822

Muskegon
Geofurnace Htg & Clg
(800) 922-3045

Petoskey
Ballard's and Great Lakes
Plumbing & Heating
(231) 347-3900

Palms
Lakeshore Improvements
(989) 864-3833

Traverse City
Geofurnace Htg & Clg
(231) 943-1000

D&W Mechanical
(231) 941-1215

Webberville
Applegate Home Comfort
(800) 377-2272



waterfurnace.com
(800) GEO-SAVE





cloverland.com



We're All About You.

October is National Cooperative Month! Electric cooperatives are not-for-profit utilities owned by those who receive their services. Our philosophy is simple, and defined by the following principles.

Open Membership | Member Control | Economic Participation
Independence | Education & Training | Cooperation | Concern for Community