

MICHIGAN COUNTRY LINES

Jack Barnwell Is

Mackinac's Master Gardener

BARNWELL LANDSCAPE
& GARDEN SERVICES
Mackinac Island

Plus!

- 4 Help Your Co-op Keep Power Costs From Rising!
- 5 Director Election Results
- 8 Center Insert: Your Co-op's Annual Report



WATERFURNACE KNOWS THAT TRAINING MATTERS

Thanks to the 30% federal tax credit, a flood of inexperienced, questionably trained dealers are now offering geothermal. While some companies allow *anyone* to sell their products, WaterFurnace requires an ongoing commitment to the most extensive training and education programs in the industry. WaterFurnace only invests in dealers who are passionate about offering the finest in products and service, and are less concerned with simply being the cheapest. That's why WaterFurnace is the most recognized and respected name in residential geothermal. Or maybe it's because WaterFurnace units use the clean, renewable energy found in your backyard to provide savings up to 70% on heating, cooling and hot water. Or is it thanks to the industry's best warranty? Decide for yourself. Contact your local WaterFurnace dealer for more information, or be prepared to deal with a flood of your own.

YOUR LOCAL WATERFURNACE DEALERS

Bad Axe
B & D Htg
(989) 269-5280

Berrien Springs
WaterFurnace
Michiana
(269) 473-5667

Big Rapids
Stratz Htg & Clg
(231) 796-3717

Caro
AllTemp Comfort, Inc.
(866) 844-HEAT
4328

Carsonville
Certified Temperature
Innovations
(810) 300-7748

Clifford
Orton Refrig & Htg
(989) 761-7691

DeWitt
S & J Htg & Clg
(517) 669-3705

Grand Rapids
Total Comfort
Resource, LLC
(616) 406-3182

Hart/Ludington
Adams Htg & Clg
(231) 873-2665

Indian River
M & M Plbg & Htg
(231) 238-7201

Ionia
Home Experts
(800) 457-4554

Jackson
Comfort 1 Htg/
Lenawee Htg
(517) 764-1500

Kalkaska
Kalkaska Plbg & Htg
(231) 258-3588

Lapeer
Porter & Heckman
(800) 445-4328

Mount Pleasant
Walton's Htg & Clg
(989) 772-4822

Muskegon
Adams Htg & Clg
(231) 873-2665

Muskegon
Kiessel Geothermal
Htg & Clg
(231) 747-7509

Onaway
Standard Htg
(989) 733-8309

Palms
Lakeshore
Improvements
(989) 864-3833

Portland
ESI Htg & Clg
(517) 647-6906

Traverse City
Geofurnace Htg
& Clg
(231) 943-1000

Traverse City
D&W Mechanical
(231) 941-1215

UPPER PENINSULA
Manistique
Hoholik Enterprises
(906) 341-5065

Marquette
J Goods Plbg & Htg
(906) 235-5788

Marquette
Swick Plbg & Htg
(906) 228-3400

**Sault Ste Marie/
Kinross**
Great Lakes
Services Inc.
(906) 632-5543



7 Series
The ultimate comfort & efficiency



visit us at waterfurnace.com

©2014 WaterFurnace is a registered trademark of WaterFurnace International, Inc.

July/August 2014
Vol. 34, No. 7

Executive Editor
Casey Clark

Editor
Gail Knudtson

Publisher
Michigan Electric
Cooperative Association

Design and Layout
Ciesa Design

Michigan Country Lines, USPS-591-710, is published monthly, except August and December, with periodicals postage paid at Okemos, MI, and additional offices. It is the official publication of the Michigan Electric Cooperative Association, 2859 W. Jolly Rd., Okemos, MI 48864.

Subscriptions are authorized for members of Alger Delta, Cherryland, Cloverland, Great Lakes, HomeWorks Tri-County, Midwest Energy, Ontonagon, Presque Isle, and Thumb electric cooperatives by their boards of directors. Subscriptions for nonmembers are \$6 per year.

POSTMASTER: SEND ALL UAA TO CFS.

Letters to the editor should be sent to Country Lines, 2859 W. Jolly Rd., Okemos, MI 48864. Phone 517-913-3531. **Email:** gknudtson@meca.coop.

Association officers are **Ken Swope**, Midwest Energy, chairman; **Robert Schallip**, Cloverland, 1st vice chairman; **Jon Zickert**, Cherryland, 2nd vice chairman; **Eric Baker**, Wolverine Power, secretary-treasurer; and **Tony Anderson**, Cherryland, past chairman. **Craig Borr** is president and CEO.

Unsolicited letters, photos and manuscripts are welcome. *Country Lines*, however, will not be responsible for their safe keeping or return.

The appearance of advertising does not constitute an endorsement of the products or services advertised.

Change of Address: Please notify your electric cooperative. See page 4 for contact information.



IN THIS ISSUE



6 HOME COOKING
 Pack A Perfect Picnic
Christin McKamey & Our Readers



Photo—Touchstone Energy

7 OUR ENERGY
 Energy Saving Tips for
 Manufactured Homes
Bob Pfeiffer



10 FEATURE
 Mackinac Island's
 Master Gardener
Neil Moran



13 SAFETY
 Water & Electricity:
 Keep Safe Near
 Boats, Docks



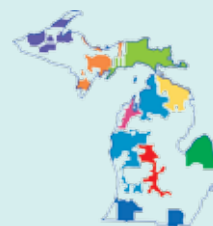
14 READERS' PAGE
 Jack's Journal:
 Mac Woods Dunes,
 Mystery Photo,
 Deer Blind Contest!

ON THE COVER*

Jack Barnwell and his crew are responsible for creating many of Mackinac Island's wonderful gardens and landscaping layouts. And, it's accomplished without motorized vehicles.

Photo—Ian Smithers

**Some co-op editions have a different cover.*



Michigan's Electric
 Cooperatives
 countrylines.com



Cloverland

ELECTRIC COOPERATIVE

MEMBER SERVICE CENTERS

Monday–Friday • 8 a.m. to 4:30 p.m.
906-635-6800 • 1-800-562-4953

2916 W. M-28
Dafer, MI 49724

836 M-134
DeTour Village, MI 49725

6214 County Rd. 403
Newberry, MI 49868

2972 W. 8th St.
Sault Ste. Marie, MI 49783

BOARD OF DIRECTORS

Email: board@cloverland.com

Robert Schallip, Chairperson
District B – Neebish Island
(906) 635-0941

Dale Carlson, Vice Chairperson
District A – Stalwart
(906) 647-8246

Richard Newland, Secretary/ Treasurer
District A – DeTour Village
(906) 297-5681

Gerald Nettleton, Director
District A – DeTour Village
(906) 430-0910

Charles Litzner, Director
District B – Sault Ste. Marie
(906) 635-5958

John Sawruk, Director
District B – Sault Ste. Marie
906-748-7919

Ronald Provo, Director
District C – Manistique
(906) 341-5300

Peter Legault, Director
District C – Engadine
(906) 477-6878

Virgil Monroe, Director
District C – Manistique
(906) 341-8808

President & CEO — Daniel Dasho
Local Editor — Wendy Malaska
cloverland.com

Cloverland Electric Cooperative is an equal opportunity provider and employer.

Help Your Co-op Keep Power Costs From Rising!



Daniel Dasho
President & Chief
Executive Officer

Since the start of 2014, Cloverland Electric's water allocations have increased nearly 60 percent above the same period last year. In April and May we operated our plant 24/7 at full capacity, and output is expected to be the same through the summer. The International Joint Commission controls the flow from Lake Superior and set the outflow at 103,000 cubic feet-per-second or about 66.5 billion gallons daily. Generating electricity with low-cost hydro keeps our power costs down.

However, we are faced with possible higher power costs in the future. Michigan law allows large industrial customers to shop for cheaper power supply. If a customer does switch to an alternative supplier, there is a 10 percent cap on the amount of customer load that can leave a system. This cap is important because utilities invest huge amounts of money and spend years constructing the power plants and transmission lines necessary to serve them well into the future. But when a customer chooses a different energy provider, the remaining customers still have to pay for these investments that are no longer needed.

In 2008, the law was modified so that U.P. mining operations could take their *entire* load and find a new electric supplier. Consequently, in 2013 Wisconsin Electric lost its mining load in the western U.P., plus the 10 percent cap. Over 85 percent of their load left for lower energy costs. And without that load, the Presque Isle Power Plant (PIPP), the U.P.'s only large power plant, was no longer needed. Wisconsin Electric announced that they would close the PIPP (located in Marquette), because it would save about \$55 million.

Hold on, not so fast, said the Midcontinent Independent System Operator (MISO), the folks who run the electrical transmission system in Michigan and the Midwest. MISO determined that the PIPP is needed for system reliability, so MISO will pay Wisconsin Electric \$55 million each year to operate the plant until another solution is found. Solutions could be new transmission lines (\$500 million to \$700 million) from Wisconsin to Marquette, or a new natural gas-fired power plant costing about \$400 million. Transmission takes about 10 years to build, and a new fossil-fired plant will take at least four to five years.

The current split on the \$55 million needed to keep the plant open is 8 percent for the U.P., and 92 percent for Wisconsin. This split has been used since 2000 to pay for transmission upgrades throughout both Michigan and Wisconsin. But Wisconsin is now crying foul and wants to change the split so that the U.P. pays 60 percent. The case has moved to the federal level with both sides engaged. The impact on our co-op will be between \$330,000 (current split) and \$3.3 million (Wisconsin proposal).

We need your help to keep your co-op's costs—and therefore your electric rates—from rising. Please contact the Federal Energy Regulatory Commission (FERC) at customer@ferc.gov or 866-208-3372 (reference Docket EL13-34). Tell FERC not to change the ATC (American Transmission Co.) tariff. ■

System Mapping Continues



Global Mapping Solutions is collecting data points of Cloverland Electric facilities for integration into a comprehensive electronic system map based on GIS technology. Contractors carry proper identification and will be working in the Sault Ste. Marie, Sugar Island, Brimley, Curtis and Manistique areas this summer. The multi-year system mapping and inventory project is expected to be completed later this year.



Energy Efficiency

Tip of the Month

During summer months, our homes can be extremely hot, making living conditions uncomfortable. Before you fire up your air conditioner, try cooling off with a ceiling fan first. By using ceiling fans, you can actually raise your thermostat setting by 4 degrees and still feel just as comfortable.

Source: Department of Energy

Cloverland Director Election Results

The results of Cloverland Electric Cooperative's Board of Director elections were announced at the annual membership meeting on June 11 at the Dafter Township Hall. The accounting firm of Bunker, Clark, Winnell and Nuorala, P.C., received the ballots and tabulated the results.

Voting took place by mail-in ballot, which concluded on May 30. The board of directors is comprised of nine directors elected by and from the members of their respective districts to a three-year term. One seat is up for election in each district every year.



Incumbent director Gerald Nettleton, of DeTour Village, was re-elected in District A with 708 votes. Jason St. Onge of Mackinac Island received 401 votes. District A is also represented by Richard Newland and Dale Carlson, both of DeTour Village.



John Sawruk, of Sault Ste. Marie, was elected in District B with 772 votes. Incumbent Director Linda Hoath, of Sault Ste. Marie, received 747

votes. District B is also represented by Robert Schallip of Neebish Island and Charles Litzner of Sault Ste. Marie.



In District C, Virgil Monroe, of Manistique, was re-elected with 754 votes. Alfred W. LeMaire, of Newberry, received 203

votes. Ronald Provo, of Manistique, and Pete Legault, of Engadine, also represent the members of District C.



PACK A PERFECT PICNIC

Pack the perfect picnic basket with these make-ahead, portable creations.

Black Bean, Tomato & Mozzarella Salad

1 can black beans, drained and rinsed
 1–2 green onions, chopped, include greens
 ½ c. cilantro, roughly chopped
 ½ c. finely chopped celery
 1 pt. grape tomatoes, halved
 ½ c. mozzarella cheese, cut in small cubes
 zest of one lime
 3 T. or more lime juice
 1 T. lemon juice
 3 T. olive oil
 ½ t. sugar, or to taste
 Optional—avocado slices

In a glass bowl, combine beans, onion, cilantro, celery, tomatoes and mozzarella.

Whisk together zest of lime, lime juice, lemon juice, olive oil and sugar. Pour lime/lemon dressing over the ingredients and mix gently. Refrigerate at least 2 hours before serving. Add avocado just before serving. This salad is very colorful and easy to take on a picnic. Everyone who tastes it wants the recipe.

Barbara Steele, Charlevoix

Old-Fashioned Coney Dog Sauce

1 lb. ground beef, browned and drained
 1 c. ketchup
 2 c. chopped onion
 ½ c. dark corn syrup
 ¼ c. brown mustard
 2 T. vinegar
 1 T. chili powder

Simmer all ingredients in saucepan, stirring occasionally. Serve over hot dogs.

Tommie Schmidt, Union

Banana Cupcakes

2 c. flour
 2 ½ t. baking powder
 ½ t. baking soda
 ½ t. salt
 ½ c. shortening
 1 ¼ c. sugar
 1 t. vanilla
 2 eggs
 1 ½ c. mashed ripe bananas

Sift together flour, baking powder, baking soda and salt. Cream shortening. Slowly add the sugar while still beating the shortening. Add vanilla and eggs and continue beating for a total of 2 minutes. Add mashed bananas while alternating with the flour mixture. Beat 1 more minute. Bake at 375° in 18 cupcake lined pans for 25 mins. or till done. Cool. Frost with your favorite frosting.

Mary Jean Troyer, Fairview

SUBMIT YOUR RECIPE!

Thanks to all who send in recipes. Please send in your favorite "Best Original" recipes by **Aug. 10**.

Mail (handwritten or typed on one side, please) to: Country Lines Recipes, 2859 W. Jolly Rd., Okemos, MI 48864; or email recipes@countrylines.com.

Contributors whose recipes we print in 2014 will be entered in a drawing and Country Lines will pay the winner's January 2015 electric bill (up to \$200)!

Find more of our readers' recipes at countrylines.com

Photos—831 Creative

Energy-Saving Tips for Manufactured Homes

If you own a manufactured home (formerly called mobile homes), you may feel like the only option you have to make it more energy efficient is to replace incandescent lightbulbs with CFLs or LEDs. In fact, there are many actions you can take that will save energy for years to come.

Following are four areas where you can increase efficiency and comfort. If you are mechanically able, you can perform many of the tasks yourself. If not, contact your nearest professional for assistance.

1. FURNACE

Make sure the furnace is safe and burns fuel efficiently. Clean your fuel-oil furnace every year; gas-fired furnaces every two to three years. Hire a contractor with a good track record on manufactured homes and check company references.

For the highest energy savings, replace the old unit with a high-efficiency condensing furnace. The extra cost can be offset within the first few years of operation. It is essential to seal all ceiling gaps or cracks above the furnace with caulk and sheetrock (Fig. 1).

2. DISTRIBUTION SYSTEM

Once the furnace is in top order, ensure that the heat and AC can be freely delivered to all rooms without restrictions or duct leakage. Clean or replace the filter to assure good air-flow through the furnace; replace all registers that are flattened; and inspect the AC evaporator coil for dust.

You can achieve *major* savings by sealing holes and gaps in the ductwork, but first you must find the leaks! Remove the registers and look for gaps at the boot and trunk. Then, use a flashlight and mirror to inspect ducts, if accessible. Use a high quality aluminum or butyl tape to seal gaps once you have cleaned the surfaces (see how-to resources below).

3. UNDER YOUR HOUSE

The road barrier on your home's underside should be intact to ensure that it is retaining heat. When entering the crawl space, lay down plastic or cardboard. Start under the furnace and water heater, where damage usually starts. Patch any holes on the outer edges using 1/2-inch foil-faced foam board. Large holes between the I-beams require a "sling-patch" made of 1x2 boards and air-barrier material, such as TYVEK® (Fig. 2). Before patching, seal any duct leaks and install insulation where possible, especially under the ductwork, using the widest material available. Do not isolate the water lines from heat, or they may freeze in winter.

4. AIR LEAKS IN SHELL

Large holes can often be found around the tub, furnace, under sinks, and behind cove molding in newer homes. Seal these openings with spray foam, caulk, or sheetrock.

Some newer manufactured homes can also be retrofitted to improve energy efficiency and incorporate renewable energy technologies, such as installing a geothermal heat pump (for permanently-sited homes), and solar water heating. Other measures to consider include spray or roll-on roof coating to reflect summer's heat. ■



Cove molding



Fig. 1—A large chimney hole is a huge energy loser. It can be sealed with sheetrock, then caulked air-tight.



Fig. 2—Underneath the home, a "sling-patch" can be screwed into the inner side of the I-beam. It stretches to the other I-beam and holds insulation under the ductwork in place.

Photos—Wisconsin Energy Conservation Corp.

Other Resources

Visit <http://energysavings.togetherwesave.com/Manufactured-Housing> for a handy graphic that shows a full list of areas where you can make energy-saving improvements. Find other resources at YOUTUBE.com: Sealing ductwork in a mobile home; <http://energy.gov/energysaver/articles/energy-efficient-manufactured-homes>; and a book, "Your Mobile Home: Energy and Repair Guide for Manufactured Housing" (John Krigger).

And, installing CFLs, LEDs and using other energy efficiency tips that work for any home, really do help, too!

**STATE OF MICHIGAN
BEFORE THE MICHIGAN PUBLIC SERVICE COMMISSION
NOTICE OF HEARING FOR THE CUSTOMERS
OF CLOVERLAND ELECTRIC COOPERATIVE
CASE NO. U-17098-R**

- Cloverland Electric Cooperative requests Michigan Public Service Commission approval to reconcile its 2013 power supply cost recovery costs and revenues and to increase its monthly residential and seasonal class charges with an offsetting reduction in its energy charges to maintain revenue neutrality.
- The information below describes how a person may participate in this case.
- You may call or write Cloverland Electric Cooperative, 2916 West M-28, Dafer, Michigan 49724, (800) 562-4953 for a free copy of its application. Any person may review the application at the offices of Cloverland Electric Cooperative.
- The first public hearing in this matter will be held:

DATE/TIME: August 5, 2014, at 9:00 a.m.

This hearing will be a prehearing conference to set future hearing dates and decide other procedural matters.

BEFORE: Administrative Law Judge Mark E. Cummins

LOCATION: Constitution Hall, 525 West Allegan, Lansing, Michigan

PARTICIPATION: Any interested person may attend and participate. The hearing site is accessible, including handicapped parking. Persons needing any accommodation to participate should contact the Commission's Executive Secretary at (517) 241-6160 in advance to request mobility, visual, hearing or other assistance.

The Michigan Public Service Commission (Commission) will hold a public hearing to consider Cloverland Electric Cooperative's (Cloverland) April 30, 2014 application to reconcile its 2013 power supply cost recovery (PSCR) costs and revenues and to increase its monthly residential and seasonal class charges with an offsetting reduction in its energy charges to maintain revenue neutrality. With respect to its Edison Sault legacy service territory, Cloverland represents that its 2013 total PSCR cumulative overrecovery is \$93,331, including prior years' balance and related audit adjustment. With respect to its Cloverland legacy service territory, Cloverland represents that its 2013 total PSCR cumulative overrecovery is \$345,649, including prior years' balance and related audit adjustment. Cloverland proposes to roll-in the overrecoveries into its 2015 PSCR plan case, as adjusted by any 2014 over or undercollection. Cloverland is not seeking a revenue increase in its rates through its Times Interest Earned Ratio (TIER) Ratemaking Mechanism for the 12-month period ended December 31, 2013. Cloverland represents that it is seeking to increase its monthly charge by \$3 for its residential and seasonal customers with an offsetting reduction in its energy charges so that the rate revisions are revenue neutral.

All documents filed in this case shall be submitted electronically through the Commission's E-Dockets website at: michigan.gov/mpscedockets. Requirements and instructions for filing can be found in the User Manual on the E-Dockets help page. Documents may also be submitted, in Word or PDF format, as an attachment to an email sent to: mpscedockets@michigan.gov. If you require assistance prior to e-filing, contact Commission staff at (517) 241-6180 or by email at: mpscedockets@michigan.gov.

Any person wishing to intervene and become a party to the case shall electronically file a petition to intervene with this Commission by July 29, 2014. (Interested persons may elect to file using the traditional paper format.) The proof of service shall indicate service upon Cloverland's attorney, Albert Ernst, at Dykema Gossett PLLC, Capitol View, 201 Townsend Street, Suite 900, Lansing, Michigan 48933.

Any person wishing to appear at the hearing to make a statement of position without becoming a party to the case may participate by filing an appearance. To file an appearance, the individual must attend the hearing and advise the presiding administrative law judge of his or her wish to make a statement of position. All information submitted to the Commission in this matter becomes public information: available on the Michigan Public Service Commission's website, and subject to disclosure. Please do not include information you wish to remain private.

Requests for adjournment must be made pursuant to the Commission's Rules of Practice and Procedure R 460.17315 and R 460.17335. Requests for further information on adjournment should be directed to (517) 241-6060.

A copy of Cloverland's request may be reviewed on the Commission's website at: michigan.gov/mpscedockets, and at the offices of Cloverland Electric Cooperative. For more information on how to participate in a case, you may contact the Commission at the above address or by telephone at (517) 241-6180.

Jurisdiction is pursuant to 1909 PA 106, as amended, MCL 460.551 et seq.; 1919 PA 419, as amended, MCL 460.54 et seq.; 1939 PA 3, as amended, MCL 460.1 et seq.; 1982 PA 304, as amended, MCL 460.6j et seq.; 1969 PA 306, as amended, MCL 24.201 et seq.; and the Commission's Rules of Practice and Procedure, as amended, 1999 AC, R 460.17101 et seq.

May 28, 2014

Co-op News

Scholarship Recipients

Every year, Cloverland Electric Cooperative awards scholarships to high school seniors whose parents are co-op members. This year the co-op awarded three scholarships.

The recipients of the 2014 Power of Excellence Scholarship are **Savannah Dugan**, **Michael James** and **Lillian Harmon**. Each student will receive a \$1,500 scholarship for use at any accredited university, college or vocational/technical school.

Savannah is a graduate of Rudyard High School, with plans to attend Western Michigan University and pursue a degree in exercise science. Michael is a graduate of the Sault Area High School, and will attend Michigan Technological University to study engineering. Lillian, a graduate of Newberry High School, will attend Northern Michigan University and study communications.

Since 2002, 50 students have benefited from Cloverland scholarships and received over \$30,000 in financial assistance.

Your Capital Credits

Since Cloverland Electric Cooperative is a not-for-profit electric utility, any margins realized by the co-op are allocated to each member's account as capital credits. The capital credits allocated to each account are based on each member's electricity purchases compared to the rest of the membership.

Over time, capital credits are returned to members through a general retirement process. Until then, the capital furnished by co-op members through the purchase of electricity is used to make system upgrades and improve service reliability.

Your August bill will contain the 2013 capital allocation notice. The first line represents your share of about \$1.6 million in operating margins realized in 2013. The second line confirms the cumulative unretired capital credits in your account and represent your ownership equity in the co-op.

High School Students Reach New Heights at 'Co-op Camp'

Local high school students **Jennifer Marske**, **Autumn Hall**, **Lindsey Kronemeyer**, **Jake Dudek** and **Alex Tunks** experience high-energy challenges at the annual Youth Leadership Summit. The three-day event at SpringHill Camp in Ewart is designed to help students develop their leadership skills, explore co-op careers and learn how to be active in the democratic process. ■



Alex Tunks scales a power pole with ease.



Suspended 30 feet above the ground, Autumn Hall skillfully maneuvers across a series of the swaying platforms.



Lindsey Kronemeyer gives drawing instructions to Jennifer Marske.



Jake Dudek leads his team in a ship building exercise.

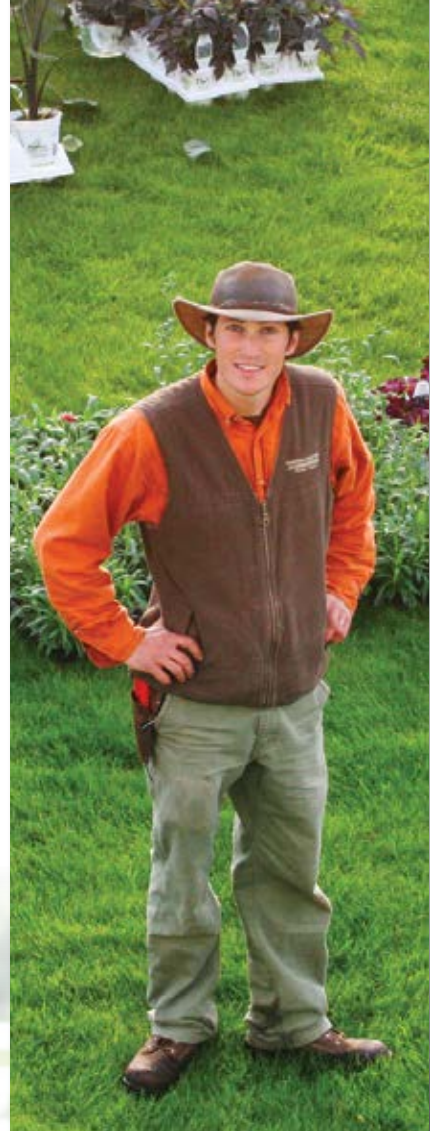
Jack Barnwell Is Mackinac's Master Gardener

Mackinac Island has been getting a facelift. It's the kind that requires rakes and shovels, because it's a facelift in flowers and plants.

Barnwell Landscape & Garden Services has been designing and planting picturesque gardens for six years—with boatloads of colorful flowers—around Mackinac's stately Victorian homes and historic businesses. Jack Barnwell and his crew are painting the island, which is served by Cloverland Electric Cooperative, with a fabulous array of dazzling petunias, sweet-smelling alyssum, and gorgeous larkspur, to name a few.

"We've more or less created what has become the 'Mackinac Island look,'" says Barnwell, who spends much of the winter coming up with new designs for over 130 island clients.

It seems Islanders didn't know they needed Barnwell's services until he started sprucing things up. Now, he says people can't wait to get their landscaping done as early as possible. This creates a crunch for his crew who must rely on boats, bikes, horse-drawn buggies and strong backs to tote their plants and tools because motorized vehicles aren't allowed on the island (except for emergency vehicles and snowmobiles).



Photo—Kathy Holt





Photos—Mike Lanzetta

It all starts before the sun comes up over Lake Huron. “The boats arrive at 3 a.m. with annual flowers,” Barnwell says. “We’ll get the hanging baskets up downtown before it gets busy with tourists.” The remainder are bedding plants that must go directly into the ground. This all has to happen as soon as the weather starts getting nice, including accepting the delivery of six semi-trailer loads, brought over by Shepler’s Mackinac Island Ferry. “We have trusted them with hundreds of unique loads,” says Barnwell, whose company also plants trees, installs irrigation, and does stone work.

Dealing with the spring demand can be a challenge. “It’s such a short season to make their money,” he explains of the businesses he caters to. “My clients depend on it (the flowers) so much for their image.”

Barnwell relies on 12 workers to get the job done without pickup trucks, loaders and skid steers. They make it all work with horses, oversized bike baskets, trailers attached to bikes, and ancient ingenuity.

“I often tell my crew to ‘think like an Egyptian,’” Barnwell adds, “because all these concepts are not new. Many were used for 1,000 years to build some amazing structures, some which are still standing today.” For the heavier work, they’ve retrofitted standard ball carts (meaning the root ball of very large trees), used to move large trees and boulders, into three-wheeled swiveling carts that can handle more weight over long distance with less effort.

“We also use a lot of winch and come-along setups, block-and-tackle pulley systems, and good ol’ fashioned leverage,” he says. “It’s amazing what can be moved with the right fulcrum point.”

The Barnwell crew’s work is also a central feature in the Grand Garden Show, a joint venture with the Proven Winners® company, the Grand Hotel, and Barnwell Landscape. The second annual event is Aug. 24–26 (see grandgardenshow.com). ■



Lighting Solutions for Businesses

Make the switch to energy-efficient LEDs.

According to the U.S. Department of Energy, businesses spend \$38 billion per year on lighting alone—accounting for the largest source of energy consumption among commercial properties. The good news is that with the help of your electric cooperative’s Energy Optimization program, Michigan businesses can save energy and money by replacing conventional outdoor lighting with highly efficient light-emitting diodes (LEDs).

With generous rebates available for lighting upgrades, businesses can start saving instantly by installing LEDs in parking lots, exterior signage, and other outdoor spaces. Specifically, the Energy Optimization program offers rebates for outdoor dusk-to-dawn LED lighting and outdoor illuminated sign lighting, which are calculated on a per-watt, reduced basis.

For even greater energy savings, consider incorporating multi-level and wireless control technologies into your facility’s LED lighting system. These controls offer an effective way to reduce energy use even further by dimming or turning lights off based on occupancy or pre-determined schedules.



Brighter Savings—The St. Ignace Kewadin Casino replaced over 1,400 lightbulbs and received a rebate through Cloverland Electric Cooperative’s Energy Optimization Program (michigan-energy.org). The lighting upgrade project is expected to yield an annual savings of over 50,000 kilowatt-hours. The co-op offers a variety of residential and commercial energy efficiency programs. Pictured (L–R) are: EO Program Energy Advisor Kevin Phillips, Cloverland Division Manager Craig Davidson, Cloverland President and CEO Dan Dasho, Casino General Manager Steve Sprecker, and Kewadin Plant Operations Manager Gary Knutsen.

Go to michigan-energy.org/cloverland and click on “Commercial and Industrial Services” to view available rebates, download a fact sheet, and find more information. ■



BIG REWARDS FOR SMALL BUSINESSES

Get cash back for saving energy!



ONLINE: michigan-energy.org PHONE: 877.296.4319

Herbicide Treatment Notice

After contractors perform right-of-way maintenance, they return the following year and apply an environmentally-friendly herbicide. Trained and licensed contractors with Thunder Bay Tree Service of Alpena will apply the herbicide selectively to foliage using backpack sprayers in accordance with state and federal regulations. Herbicides will not be applied to lawns, gardens, or crop areas. The herbicides used are Rodeo® (Active ingredient (AI): Glyphosate), Arsenal® (AI: Imazapyr) and Escort® (AI: Metsulfuron). All products are diluted with water (95 percent).



The herbicide application will take place in Fairbanks, Garden, Inwood and Thompson townships located in the western portion of our service area. Our selective herbicide application program ensures safe access for our service and maintenance needs while preserving the natural surroundings as a habitat for wildlife.

We appreciate your cooperation and support in our efforts to deliver safe and reliable electricity. If you have any questions, please call Construction Supervisor Jim Wilson, 906-632-5144. ■

Cloverland Promotes Safety



Cloverland Safety and Loss Prevention Coordinator Jim Mackie explains the principles of electrical safety using the co-op's new tabletop safety display. The co-op debuted the powerTOWN® exhibit at the Super Saturday Family Fair and 4-H Expo in St. Ignace.

Check Your Boat, Dock, and the Neighbor's, Too!

For water fun and safety, there are items you must legally have on your watercraft—life vests, fire extinguisher, throwable floatation device, and properly working lights—but make sure the boat itself and the dock are safe, too!

July 2012 saw some horrific fatal accidents near boats and docks. A 20-year-old Port Huron man entered the water behind a moored boat and became disabled as he tried to climb onto the swim platform. Friends trying to pull him onboard reported getting shocks. He could not be resuscitated. An investigation confirmed voltage behind the boat, caused by an AC-to-DC fault in the battery charger that energized the underwater gear, and there was no AC-DC bonding connection. In another incident, a young woman was electrocuted by an energized dock ladder.

To help prevent such tragedies, the National Electrical Contractors Association says:

- All installations should be performed by a professional electrical contractor.
- All dock receptacles must comply with the National Electrical Code, which mandates a ground fault circuit interrupter (GFCI). A GFCI measures a circuit's current and senses any imbalance (such as a discharge into the water), which trips the GFCI and cuts off the power.
- Test a GFCI at least monthly. Locate it along the ramp to the dock so it can be easily tested by local fire departments.
- Metal dock frames should have "bonding jumpers" that connect all metal parts to an on-shore grounding rod. This means any dock part that becomes energized by electrical malfunction will trip the GFCI or circuit breaker.
- Ask neighbors if their dock electrical systems have been inspected and are up to Code.
- Household wire is not suitable for boats.
- Do not use wire nuts (these are for solid conductor wire, which should never be on a boat) or splice connectors (can cut wire strands)!
- Fuses are rated to protect the wire, not the stereo. If a fuse blows continuously, something else is wrong.
- If you rent a dock or boat, notify the owner of safety violations immediately.
- Have your boat's system (especially with onboard generators) checked at least annually, and when something is added or removed.
- Ropes, string, masts and rigging also conduct electricity—don't be the common ground between water and electricity!
- See SafeElectricity.org for more tips. ■

Summer Thrills

Summer means “vacation” to many, and memories of family road trips along with the familiar mantra Mom and Dad grew weary of hearing: “Are we there yet?” I remember traveling to the Detroit Zoo and the Henry Ford Museum and Greenfield Village back in the ‘60s when speed limits were more of a suggestion than law. Dad was known to occasionally hit 100 mph—a great thrill for a young lad!

Today, I still enjoy a thrilling ride with my family while taking in some of the most panoramic Lake Michigan views, thanks to Mac Wood’s Dune Rides in Mears.

A fourth generation family business that’s served by Great Lakes Energy Cooperative, Mac Wood’s began operating in 1930 when Mac started looking for ways to entertain guests at a nearby resort he managed. Mac built the first four-passenger ‘dune scooter’ from a Model A Ford and charged 25 cents per ride.

Things were less restricted back then and like my Dad, with Mac behind the wheel, many described the trips as ‘thrill rides.’ Mac’s granddaughter, Shelby Olson, describes it as a time when “there were no rules. It was a go-anywhere, full-speed fun ride.”

Though times have changed, the dune rides are just as exciting today (open until Oct. 5—see macwoodsdunerides.com) as they were 84 years ago. Between climbs and descents through some of the most beautiful dunes in the state, you’ll stop along the way to enjoy views of Lake Michigan and Silver Lake while learning about the ecology of the dunes.

Today’s dune scooters seat more folks more comfortably (your backside will appreciate it!) so bring a few friends along for the ride.

Working every summer since she was a child, Shelby emphasizes that the dune rides are still all about family,

friends and fun. “Visiting Mac Wood’s is a unique experience that everyone in the family can enjoy from babies to grandparents!” She also says that many former guests are now bringing their kids and grandkids to ride, commenting about riding the dunes “when they were little.” Ah, those family memories. You gotta love ‘em.

There is plenty of time left to enjoy a Pure Michigan summer. Comb the shores for beach glass, dip your toes in one of our Great Lakes, or simply soak up the sunshine.



Jack O'Malley

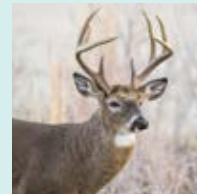
Family memories await just over the next dune! All you need is a map and the spirit of adventure.

Share a story idea with Jack by email to: jack@countrylines.com or write J. O'Malley, 2859 W. Jolly Rd., Okemos, MI 48864. ■

Deer Blind Contest: The Hunt Is On!

If you think yours is the best Michigan deer blind, enter our *Country Lines* Deer Blind Contest by **Aug. 15**.

Categories for entering a photo of your blind are: Most tricked-out; Best story behind it; and Most interestingly-engineered. Enter at countrylines.com or mail it to CL Deer Blind Contest, 2859 W. Jolly Road, Okemos, MI 48864. Include your name, contact information, and a description of what makes it great. Winners will receive a \$50 credit on their co-op electric bill and have a photo of their blind published in *Country Lines*.



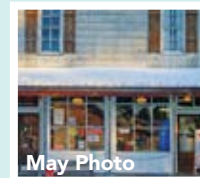
«« Do You Know Where This Is?

Every co-op member who identifies the correct location of the photo at left by **Aug. 10** will be entered in a drawing for a \$50 credit for electricity from their electric co-op.

We do not accept Mystery Photo guesses by phone. Enter your guess at countrylines.com; or send by mail to *Country Lines* Mystery Photo, 2859 W. Jolly Rd., Okemos, 48864. Include your name, address, phone number and the name of your co-op. Only

those sending complete information will be entered in the drawing. The winner will be announced in the Sept. 2014 issue.

The May contest winner is Luke Bourne, a Great Lakes Energy Cooperative



member from LeRoy, who correctly identified the photo as the LeRoy Hardware store.

2 FREE Upgrades \$5,000 Value!



WHEN YOU ORDER IN JULY

Upgrade from Standing Seam to Designer Oxford or Rustic Shingle plus eliminate the rust from steel by upgrading to energy efficient non-rusting aluminum. Act now and these \$5,000 upgrades are absolutely FREE.

Why choose a metal roof?

- Permanent/Lifetime Guarantee
- Add beauty & value to your home
- A rainbow of colors & styles
- Year round statewide installation

- Visit our showrooms:
FLINT • 6140 Taylor Dr.
LANSING • 1875 Lansing Rd.

- Ask about our Do-It-Yourself seminars

 facebook.com /AMRmichigan



NEW! Pocket Rib Panel for Rural Buildings

New and Exclusive to American Metal Roofs - the Pocket Rib Metal Roof Panel designed specifically for non-heated barns and outbuildings. Available in a variety of colors, this panel is the only one to meet AMR's high standards of functional durability. Call and talk with one of our metal roofing experts about the benefits of Pocket Rib today!

Call today! 844.638.2576
844.METAL.ROOFS



Financing Available

www.AmericanMetalRoofs.com



Cloverland
ELECTRIC COOPERATIVE

cloverland.com



recycle it

Get \$50 for your old refrigerator or freezer.

Have an extra working refrigerator or freezer? Don't let it sit there wasting energy. **Recycle it.** Schedule your **FREE** pick-up today. **BONUS REBATES: Get an extra \$15 rebate for each dehumidifier and room AC unit you recycle, too.**

michigan-energy.org
877.296.4319

