

Unique In The U.P. • The Next Water Heater

A SERVICE OF PRESQUE ISLE ELECTRIC & GAS CO-OP

July/August 2010

MICHIGAN Country Lines

See
the
Soo

**4 Mission Continues Despite
Denial Of Wolverine Permit**

5 Scholarship Award Recipients

28 Travel: Walking Alpena



regular price \$~~39.99~~

\$24.99
a month
for 12 months

over 120 channels *locals included!*
(where available)

HD FREE *for life!*
(with agreement)



Over **200 HD** channels available! ...& much more!

Call Today

1-877-508-4614

www.infinityDISH.com

WE ARE OPEN 7 DAYS A WEEK 8 AM - MIDNIGHT EST • SUNDAY 9 AM - MIDNIGHT EST
OFFER ONLY GOOD TO NEW DISH SUBSCRIBERS • SE HABLA ESPAÑOL

Free



Activation (~\$99 Value)

Free

HBO® & SHOWTIME®

18 channels for 3 mo.
(with agreement)

Free



2 Room
HD-DVR Upgrade
1 HD-DVR + 1 SD-DVR
(\$6/mo DVR service fee applies)

Free



Up to 6 Room
Installation



Digital Home Advantage plan requires 24-month agreement and credit qualification. If service is terminated before the end of agreement, a cancellation fee of \$17.50/month remaining applies. Programming credits apply during first 12 months. Free HD for life of current account; requires Agreement, AutoPay with Paperless Billing. HBO/Showtime offer requires AutoPay with Paperless Billing; credits apply during first 3 months (\$72 value); customer must downgrade or then-current price applies. Requires continuous enrollment in AutoPay and Paperless Billing. Free Standard Professional Installation only. All equipment is leased and must be returned to DISH Network upon cancellation or unreturned equipment fees apply. Limit 6 leased tuners per account; lease upgrade fees apply for select receivers; monthly fees may apply based on type and number of receivers. HD programming requires HD television. HD channel availability will vary based on package. 200 HD channels require subscription to additional packages and VIP® 922 receiver. All prices, packages and programming subject to change without notice. Local channels may not be available in all areas. Offer is subject to the terms of applicable Promotional and Residential Customer Agreements. Additional restrictions may apply. First-time DISH Network customers only. Offer ends 9/28/10. HBO® and related channels and service marks are the property of Home Box Office, Inc. SHOWTIME and related marks are registered trademarks of Showtime Networks Inc., a CBS Company. InfinityDISH charges a one-time \$49.95 non-refundable processing fee.

Editor
Gail Knudtson

Design Editor
Cindy Zuker

Ad Assistant
Jennifer Hansen

Executive Editor
Michael Buda

Publisher
Michael Peters

Michigan Country Lines, USPS-591-710, is published monthly, except August and December, with periodicals postage paid at Okemos, MI, and additional offices. It is the official publication of the Michigan Electric Cooperative Association, 2859 W. Jolly Rd., Okemos, MI 48864.

Subscriptions are authorized for members of Alger Delta, Cherryland, Cloverland, Great Lakes, HomeWorks Tri-County, Midwest Energy, Ontonagon, Presque Isle, and Thumb electric cooperatives by their boards of directors. Subscriptions are \$6 per year.

Postmaster: send address changes to Country Lines, 2859 W. Jolly Rd., Okemos, MI 48864.

Letters to the editor should be sent to the same address. Phone 517-351-6322. **Email:** knudtson@countrylines.com.

Association officers are **Brian Burns**, PIE&G, chairman; **Ken Swope**, Midwest Energy, 1st vice chairman; **Tony Anderson**, Cherryland, 2nd vice chairman; **Eric Baker**, Wolverine Power, secretary-treasurer; and **Louis Wenzlaff**, Thumb, past chairman. **Michael Peters** is president and CEO.

Unsolicited letters, photos and manuscripts are welcome. *Country Lines*, however, will not be responsible for their safe keeping or return.

The appearance of advertising does not constitute an endorsement of the products or services advertised.

Display ad representatives:

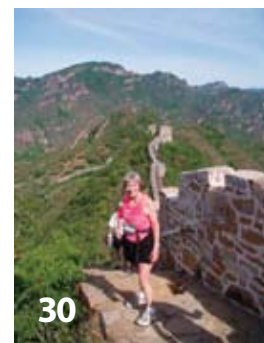
Michigan-Al Mateus
877-649-5620

National-The Weiss Group
480-860-5394

National Country Market
512-441-5200

Change of Address: Please notify your electric cooperative. See page 4 for contact information.

MICHIGAN Country Lines



10 See the Soo

The busy waters of the St. Mary's River ensure that Sault Ste. Marie never loses its undercurrent of excitement and possibility. *Linda Sirois*

12 Unique in the U.P.

Take a Michigan vacation this summer by visiting the Keweenaw Bay in the western Upper Peninsula. *Kath Usitalo*

14 The Next Water Heater

New heat pump water heaters may signal the rebirth of an energy-saving technology. *Alice Clamp*

COLUMNS

- 9 **Comment** *Michael Peters*
Co-op principles still work after 75 years
- 16 **Our Kids** *Linda Wacyk*
Do the math
- 20 **Gardening** *Neil Moran*
Co-op member gardeners
- 22 **House & Home** *Jame Dulle*
Metal roofs are cool
- 24 **Outdoors*** *Don Ingle*
Summer and sunfish go together
- 30 **Ramblings** *Mike Buda*
Love to run

*Not in all editions

Pages specific to your electric utility are: 1, 4-5, 8, 25, 28-29, 32

DEPARTMENTS

- 6 **Readers' Pages**
Broadband, scholarships, letters
- 18 **Home Cooking**
Poultry recipes
- 24 **Wolverine Power***
Air permit denied
- 26 **Country Lines Marketplace**
Classifieds from readers



MICHIGAN'S ELECTRIC
COOPERATIVES
countrylines.com



COVER *

A scene looking north to the Soo Locks, shot from the deck of the retired ice breaker *Mackinaw* during a summer festival. Building on the left is Cloverland Electric Cooperative's hydroelectric power plant. *Photo* – © *Shawn Malone/LakeSuperiorPhoto.com*



PRESQUE ISLE ELECTRIC & GAS CO-OP

19831 M-68 Hwy., P.O. Box 308
Onaway, 49765

Business Office & Billing: 989-733-8515

Toll-free: 1-800-423-6634

www.pieg.com

BOARD OF DIRECTORS

Allen Barr, Chairman

231-625-2128
2591 Grant Siding Road
Cheboygan, MI 49721

John F. Brown, Vice-Chairman

231-625-2099
21 W. Devereaux Lake Rd.
Indian River, MI 49749

David W. Smith, Secretary

989-785-5345
P.O. Box 180
Atlanta, MI 49709

Daryl Petersen, Treasurer

989-742-3145
P.O. Box 54
Hillman, MI 49746

Allan Berg – 989-734-0044

1117 E. Heythaler Hwy.
Rogers City, MI 49779

Sally Knopf – 989-734-4196

1849 W. 638 Hwy.
Rogers City, MI 49779

Bernice Krajniak – 989-379-2727

13478 Carr Rd.
Posen, MI 49776

Robert Wegmeyer – 989-379-2311

16181 Beaver Lake Park Rd.
Lachine, MI 49753

Raymond Wozniak – 989-766-2498

6737 State St.
Posen, MI 49776

PRESIDENT & CEO

Brian J. Burns

PIE&G's natural gas operations are not regulated by the Michigan Public Service Commission.

Your Touchstone Energy® Cooperative



PRESQUE ISLE ELECTRIC & GAS CO-OP

Mission Continues Despite Denial of Wolverine Permit

If you haven't heard the disappointing news, the Michigan Department of Natural Resources and Environment (DNRE) has denied the air quality permit for the Wolverine Clean Energy Venture power plant. Wolverine Power Cooperative is PIE&G's wholesale energy supplier.

After nearly 1,000 days, the DNRE defended its decision based on need and cost rather than the project's compliance with appropriate air emission laws, rules and regulations (see page 24). The permitting process speaks volumes about the dysfunctional nature of the state



Brian J. Burns
President & CEO

technical merits of Wolverine's application, as is required by law, the state has all but taken away one potential option Wolverine is creating in pursuit of its mission—securing long-term, reliable and affordable power supply for its member-owners. Moreover, the state has compromised Wolverine's due diligence responsibility and requisite business judgment.

As to the project's need and cost, I can assure you that each is paramount. Wolverine and PIE&G work diligently on your behalf to make your electricity affordable. Our missions require us to. We

have accomplished much toward this goal over the last decade (see table).

Like PIE&G, Wolverine is a not-for-profit cooperative with a clear and sound mission, unfettered by a profit motive. And regardless of the

bureaucracy, in general, and to politics, more specifically.

By failing to make its decision on the

obstacles placed before them, PIE&G and Wolverine will continue providing reliable, affordable power.

Michigan Public Service Commission Comparison of Monthly Residential Bills

1,000 kWh/month

	July 2000	June 2010	10-year Difference
Alpena Power Co.	\$79.00	\$127.59	\$48.59
PIE&G	\$91.00	\$114.98	\$23.98

Note – In 2000, PIE&G monthly residential bills were \$12 above Alpena Power; 10 years later, PIE&G bills are \$12.61 below.

Your Board In Action

At their April and May 2010 regular and special meetings, the PIE&G Board of Directors:

- Strategized on retiring capital credits on a systematic basis and the subsequent consequences of this action.
- Discussed Advanced Metering Infrastructure and Automated Meter Reading technology, developments and opportunities.
- Listened to status reports on communication plan and balanced scorecard.
- Recognized 1st quarter write-offs of \$19,991.71 for electric and natural gas service.
- Approved revisions to Strategic Plan and "Board Policy #21—Conflict of Interest."
- Authorized long-term debt of \$3 million.
- Approved new memberships for March and April.
- Accepted team reports of CEO Burns and CFO Soback.

PIE&G Communities First Fund Awards Scholarships

Through the voluntary round up of its members' electric and natural gas billings, the Presque Isle Electric & Gas Co-op Communities First Fund provides grants and scholarships for use in communities in the co-op's service area. The Fund's board of directors recently awarded scholarships equaling \$2,400 over the next two years to the following 2010 high school graduates:



Nicolette Olree



Janice Ciarkowski



Tyler Armantrout



Chelsea Stevens

general manager. **Chelsea Stevens**, daughter of Drew and Karen Stevens of Hillman, is the first recipient of this award. She plans to attend Alpena Community College and pursue a nursing degree.

Nicolette Olree, daughter of Douglas and Shelley Olree of Onaway, graduated from Onaway High School. She plans to attend North Central Michigan College to pursue biology.

Janice Ciarkowski, daughter of David and Grace Ciarkowski of Posen, graduated from Posen High School and plans to attend Alpena Community College to pursue business administration.

Tyler Armantrout, son of Roger and Cherelynn Armantrout of Levering, graduated from Pellston High School and will pursue the utility technician program at Alpena Community College.

The family of A. Barkley Travis has funded a \$500 memorial scholarship honoring the former PIE&G gen-



Representing PIE&G at Teen Days this year were (L-R): Rachael Hunt, Jasmine Materna, Debbie LaLonde, Esther Hardies, Christian Tollini, and Brook Szymoniak. Esther was chosen to represent the co-op in Washington, D.C., in June for the Rural Electric Youth Tour.

Learning the Co-op Way

Aiming to inspire the next generation of co-op leaders, six Michigan electric co-ops recently sponsored 29 high school sophomores and juniors from across the state to participate in a three-day "electric camp."

The annual Michigan Electric Cooperative Teen Days event gives participants the opportunity to learn hands-on about staying safe around electricity and how to use it efficiently, information on careers in the electric industry and at their local electric co-op, and how the cooperative business model works.

Held at the Kettunen 4-H Center near Tustin, students had the opportunity to ride in a bucket truck, strap on gear and climb a utility pole, and they even formed a mock board of directors while learning how their co-op plays an important part in their communities.

Learn more about co-op programs for teens by visiting countrylines.com, and clicking on "Youth."



Rachael Hunt, and all the other participants, learned to climb a utility pole.

Public Act 295: The Clean, Renewable and Energy Efficient Act

Annual Energy Optimization Report
Presque Isle Electric & Gas Co-op – MPSC Case Number U15820

Presque Isle Electric & Gas Co-op contracted with the Michigan Electric Cooperative Association (MECA) to administer an Energy Optimization (EO) plan in order to comply with P.A. 295. MECA filed a 2½-year Energy Optimization plan with the MPSC on Feb. 18, 2009, as required by P.A. 295. This EO plan was approved by the MPSC on May 12, 2009, and we began launching energy optimization programs in June 2009.

In August 2009, CLEAResult Consulting, Great Lakes LLC, was selected to implement the "Residential and Small Business Energy Star Program," the "Commercial and Industrial Prescriptive Program," and the Energy Optimization website at michigan-energy.org. CLEAResult has subcontracted with Franklin Energy and JACO to assist with EO program delivery.

In 2009, Presque Isle collected \$142,703 through the Energy Optimization Surcharge and spent \$71,715, resulting in an overcollection of \$70,988 that will be applied towards 2010 EO Program delivery expenses and goal achievement. Presque Isle achieved 34.1 megawatt hours of energy savings in 2009.

The full report can be obtained in the Presque Isle Electric & Gas Co-op section of michigan-energy.org.

**PIE&G offices will be closed
Monday, July 5,
for Independence Day
and Monday, Sept. 6,
for Labor Day.**

*Have a safe and happy
summer!*

Internet Service Mapped in State

The Michigan Public Service Commission (MPSC) has completed broadband availability maps aimed at promoting development of high-speed internet access.

The maps, accessible online at connectmi.org, are a product of the Connect Michigan broadband initiative, a public-private partnership between the MPSC and Connected Nation, a national nonprofit focused on technology expansion in underserved areas.

"This is an important first step as the state seeks to target resources to those areas of the state without high-speed

internet service," said Orjiakor Isiogu, chairman of the MPSC.

The map details where broadband does and does not exist across Michigan by type of broadband service.

The initial maps include data from more than 86 state providers. The key findings show that 95.41 percent of Michigan households have access to broadband service of at least 768 kbps downstream (excluding mobile and satellite service); 4.59 percent of Michigan households are unserved, representing approximately 174,000 unserved households of which 165,128 are rural.

Consumers can search for high-speed internet service providers using their home address, service providers can make informed expansion decisions, and state and federal policymakers can target resources to unserved and underserved communities.

Those who do not currently have broadband access can add their name and address to a secure database of households that would like to subscribe, if given the opportunity.



Map of available DSL service on connectmi.com.

MYSTERY PHOTO

Everyone who identifies the correct location of the photo below by **Aug. 10** will be entered in a drawing for a **\$50 coupon redeemable for electricity from your electric cooperative**.

Call in your entry to *Country Lines* at 517-351-6322, ext. 306, email jhansen@countrylines.com, or mail it to *Country Lines*, 2859 W. Jolly Road, Okemos, 48864. Include your name, address, phone number and co-op. The winner will be announced in the September 2010 issue.

The **May** contest winner is **Karen Altman** of Gaylord, who correctly identified the row of "cottages" near the Grand Hotel on Mackinac Island.



May photo

Do you know where this is?



National Electric Co-op Youth Tour Means Education, Fun

A group of 13 teens from across the state traveled to Washington, D.C., recently to participate in the Rural Electric Youth Tour. Sponsored by the National Rural Electric Cooperative Association (NRECA) and the Michigan Electric Cooperative Association, this annual event gives high school sophomores and juniors the opportunity to learn about electric co-ops, politics and current issues.

"I gained so much from this trip..." says Brittany Bonar of Charlevoix, "...new friends, more knowledge about our country, and I found the monuments, memorials and museums to be very intriguing. These are memories that will last forever."

Along with a tour guide and three chaperones, the group toured Arlington Cemetery, the Smithsonian museums, war memorials, Supreme Court and Capitol, and enjoyed a play at the Kennedy Center, a visit to the National Zoo, and a Potomac River boat cruise.

The students also met with Sen. Debbie Stabenow and U.S. Reps. Bart Stupak, Dave Camp, Vern Ehlers, Fred Upton and legislative staff to ask questions and discuss economic and energy-related issues.

And, joining 1,500 electric co-op-sponsored students from across the country, the group also convened for National Youth Day to learn from inspirational

speakers, including Mike Schlappi, a four-time paralympic medalist and two-time world champion in wheelchair basketball. Schlappi shared his inspiring message: "Just because you can't stand up, doesn't mean you can't stand out."

McKenna Wolf, a junior at Constantine High School, was chosen to represent Michigan on NRECA's Youth Leadership Council. She will return to D.C. in July to attend a youth conference designed to strengthen leadership and public speaking skills.

Participating co-ops included Cloverland Electric, Cherryland Electric, Great Lakes Energy, HomeWorks Tri-County Electric, Midwest Energy, and Presque Isle Electric & Gas Co-op. The students were chosen by their sponsoring co-op after attending Michigan Electric Cooperative Teen Days in April—a three-day camp to learn about electrical safety and energy efficiency, and how co-ops operate.

Learn more about these co-op-sponsored youth programs at countrylines.com; click on "Youth."



Mike Schlappi and McKenna Wolf

Top photo: (back row from left) Marcus Ruff, Jake Smith, Tyler Ashbaugh, Robert Myers, Kevin Bolz, Will Puerner and Luke Smith; (front row) Sen. Debbie Stabenow, Esther Hardies, Karol Chubb, Tabitha Lyon, McKenna Wolf, and Brittany Bonar.



© Stockphoto.com/Damian Gadal

Support Michigan

I am from the Detroit area, lived here for all of my almost 52 years. Most of my family and myself have worked for the auto industry and I have worked directly for Ford Motor Co. R&D for the last 17 years. I am also not embarrassed to say I am a Lions season ticket holder, but go to very few games in October or November. I spend most of those months in northern Michigan. There is nowhere else on earth that I'd rather be in the fall.

We own 20 acres in Manistee county where we just built a vacation home in late 2008. We've spent countless vacations in Da U.P., eh! My wife and I have seen over 100 waterfalls there and a large portion of the lighthouses. We purchased a plaque for my mother and stepdad in the Marquette Lighthouse tower that was to be used for restoration. We have gone out of our way to vacation and spend money in Michigan's north country.

With all the jobs lost in Michigan in the auto industry, it is no wonder tax revenues are down. My wife has been out of work for a year-and-a-half and my income is down over 30 percent, yet we still find a way to visit the north. When are the people of Michigan going to learn to buy products from Michigan/USA, which pay Michigan income taxes, property taxes and corporate taxes and quit buying from companies that send money back to Japan, China and Korea?

A teacher friend was complaining to me about the state's financial crisis and how his taxes are going up and [he's] losing benefits, yet he drives a

Honda. Why is it so hard to understand that even though the Honda was "assembled" in the USA the purchase supports Japan and not the Michigan workers who pay state taxes and spend their money in Michigan? While traveling through the state I see so many foreign cars, especially around Traverse City.

I could go on, but I'll make my point. With our income down around 40 percent and job prospects as bad as they are, if my wife loses her unemployment before finding a job, we could lose our vacation home. That will be one more family not spending their money in northern Michigan. When are the people of this state going to learn and stop sending our potential tax revenue to Japan, Korea and China?

Tony Burkel, Macomb Township

"Greener" Lawn

In his article, Brian Sloboda ("A Greener Way to a Greener Lawn," June 2010) failed to mention another alternative to mowing or trimming a lawn, reducing emissions, and using less oil.

There are new products at golehr.com that you might be interested in: a propane-powered lawn mower and gas trimmer. I have the trimmer myself. It is powered by a 4-cycle motor. Emissions are far less than with conventional fuels. The trimmer and lawn mower use a 16-ounce camping-style canister that lasts two hours. The canister is recyclable and in the future it may be possible to re-fill these containers.

The amazing thing is there is no mixing of oil and the canister can be removed and used anytime with no worry of it becoming "old." Octane ratings stay the same. The trimmer and lawn mower are a clear alternative to old methods while helping the environment. Cub Cadet makes

a propane-powered zero-turn lawn mower.

Propane is a clean-running fuel and it doesn't require burning fossil fuels to create the fuel to run it and it is in plentiful supply. I hope others will begin to use this equipment as I have to help reduce emissions that impact our planet.

I plant natural grasses and plants in my yard so that I have reduced my mowing to zero. I trim my yard, but I burn weeds with a propane "Weed Destroyer" so that I eliminate my use of chemical pesticides.

Jim Ege, Pentwater

Propane is a fossil fuel. Propane is cleaner burning than gasoline, but not as clean as natural gas or electricity when used to power equipment. In terms of emissions, from higher to lower, the order is gasoline, propane, natural gas, electricity. —ed.

About Coal & Nuclear

I'd like to respond to a letter in the May 2010 issue of *Country Lines*.

It appears [the writer] is suffering from severe selfishness, preferring to avoid any responsibility for encouraging profligate use of carbon-yielding fuels rather than working, in any way he could, to reduce the negative impact that today's use of those fuels probably have on his grandchildren—and mine. If he were to adopt an increased sense of altruism he might find that he can look at all children and know that he has done something for all, not just for his personal concepts of what is best for our world.

Look outside your window and you'll discover there is a world worth working to save.

Jon Wennerberg, Skandia

Physicians for Social Responsibility has information about energy sources people making decisions about those sources should be familiar with.

Gerald Drake, MD, Petoskey

Students Win Scholarships



Ben Schell



Brandon Kieft

Brandon Kieft, a member of Great Lakes Energy Cooperative, and Ben Schell, Cherryland Electric Co-op, have each won a \$1,000 scholarship from the Michigan Electric Cooperative Association (MECA).

Brandon is the son of Paul and Gina Kieft of Rothbury, and a graduate of Montague High School, where he was active in varsity basketball and soccer, and community service and leadership organizations. He plans a career in bio-medical engineering.

Ben is the son of Timothy and Linda Schell of Traverse City and a graduate of St. Francis High School, where he was active in community service and played varsity football, basketball and track. He will attend the University of Michigan and plans to pursue a career in medicine.

A total of 156 scholarship applications were received by MECA, which publishes *Michigan Country Lines* for the state's nine electric co-ops.

Recycled Paper

Michigan Country Lines is now printed on recycled paper from FutureMark Paper, which taps the "urban forest" of waste paper thrown out in Chicago every day. Using recycled paper reduces the carbon emitted in paper production, the paper deposited in landfills, and water and air pollution. The energy to produce recycled paper is about one-half the amount required to make paper from pulp.



Members Get \$30 to Recycle Old Appliances

Chances are, that old, secondary refrigerator or freezer running in your garage or basement is also running up your electric bill. That's because these older, inefficient appliances can use three times as much energy as newer models, which can add up on your electric bill. But now there's an easy solution! We'll pick up your older working appliance for free, and you'll pick up \$30 in cash! Getting rid of that old refrigerator can also help you save up to \$150 annually on your electric bill. So, do something good for yourself, good for the environment, and lower your energy bills, too.

Program Requirements

1. The refrigerator or freezer must be clean, empty and in working condition.
2. The unit must meet the size requirement, which is 10-30 cubic feet.
3. You must be a current electric customer of PIE&G.
4. You must provide clear and safe access to your appliances for the removal team. They will not risk injury or be able to move personal effects or modify your home (e.g.: remove door or railings) to remove the unit(s).

Visit michigan-energy.org and enter your zip code to schedule an appliance pick-up by an Energy Optimization contractor.

If you have questions about the recycling program, or to schedule your pickup date by phone, call 877-296-4319. Rebates subject to change and availability.

Staying Safe

A pretty amazing story was posted recently by an organization called SafeElectricity. It involved two teens in Indiana, Lee Whittaker and Ashley Taylor, who were driving down the road with some friends when their car started to fishtail. Lee tried to keep the vehicle on the road, but before he knew it he was sliding into a utility pole—and that pole came down, lines and all, right on top of his overturned car.

Now, most folks faced with this situation would do what comes naturally: get out of the car. But Lee and Ashley knew better. Less than a week earlier they had attended a safety demonstration at their school sponsored by their local electric co-op. One of the key messages relayed was, "stay in your car if it ever hits a power pole, where you'll be safe from any electrical current."

The two did just that, and kept their friends in the car and family members at a safe distance once they arrived. As a result, the entire group walked away with just a few minor injuries. However, without a basic knowledge of electrical safety, the outcome that night could have been much different.

The electricity Presque Isle Electric & Gas Co-op provides day-in and day-out is a phenomenal resource, powering our modern lifestyles in a safe, reliable and affordable way.

But electricity must be respected: If safety isn't made a priority, what changes our lives for the better could change them for the worse in an instant.

Lee and Ashley know this from experience, and we're striving to keep you informed about electrical safety so you don't have to learn a similar lesson the hard way.

Safety has been a part of the fundamental culture at PIE&G since day one. Being an electric lineworker is ranked by the U.S. Department of Labor as one of the top 10 most dangerous jobs, on the same list as fishing, logging and military service. We demand that not only those in the field, but employees at all levels make safety a top priority.

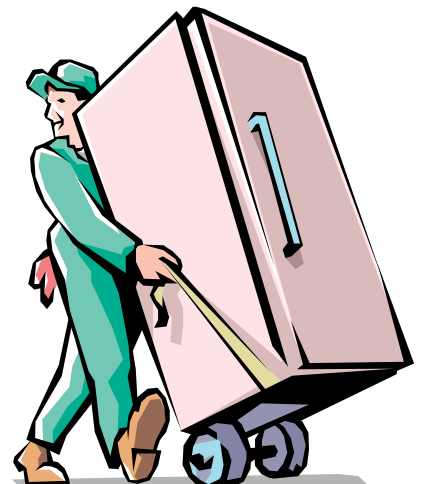
As part of our safety commitment, please take time to learn how you can be safe around electricity at home. Spending just a few minutes with some helpful resources can make all the difference when you're faced with an unsafe situation. For more about electrical safety, visit our website at pieg.com, as well as SafeElectricity.org and Electrical-Safety.org.

Hopefully, there won't be any stories about PIE&G members getting into sticky situations like Lee and Ashley. But if there are, a few minutes spent studying safety today could ensure a happy ending.

Residential Rate Comparisons for MPSC-Regulated Electric Co-ops

As of June 1, 2010

COOPERATIVE	Monthly Bill 500 kWh	Monthly Bill 1,000 kWh
Presque Isle	\$63.49	\$114.98
Cloverland Electric	\$63.59	\$117.06
Midwest Energy	\$64.89	\$117.78
Great Lakes Energy	\$66.37	\$120.74
Thumb Electric	\$67.93	\$127.85
Ontonagon REA	\$99.19	\$186.37





Cooperative Principles Still Working After 75 Years

A few years ago I joined my son and his Boy Scout troop on a 10-day backpack trip at the Philmont Scout Ranch, the Boy Scouts' 214-square-mile-high adventure base located in the mountains of northern New Mexico. Since we were a "boy-led troop," our purpose as adult leaders was simply to follow the Scouts and only step in if it became a matter of safety. Each day the boys picked a different trail leader and that scout was responsible for setting the pace and navigating the trails. For the most part, the trails were fairly well marked and getting lost took some effort. However, in some of the more rocky regions there really is no trail and you had to use the compass and map to make sure you were heading in the right direction.

I recall one occasion where the scouts headed off down a path the adult leaders knew was incorrect. We were tired and really didn't want to wait too long to see how far they would go before figuring out we were "lost." In our minds, we were recalling a hike we took five years earlier where we walked 10 miles on a five-mile trail as we dutifully kept following behind a scout who was obviously lost. We didn't want to needlessly add to our trek, but we also didn't want to squash the enthusiasm of the leader. So instead of shouting out that he was wrong or lost, or taking over, we slowed the pace and gave him a chance to figure out we were not heading down the right trail. Fortu-

nately, it only took him about 10 minutes to figure it out. This led to a conversation about the need to stop every so often, look around, and reconfirm that you are on the right trail.

As cooperatives, we follow a more general road map: the seven cooperative principles. These principles have been around for hundreds of years and have guided all types of cooperatives. As we hit our 75th year, it makes sense for us to pause, take a look around, and reconfirm that we are still on the right trail.

Following are the principles that guide cooperatives:

1. Voluntary and Open Membership

Cooperatives are voluntary organizations, open to all persons able to use their ser-

vices and willing to accept the responsibilities of membership.

2. Democratic Member Control

Cooperatives are democratic organizations controlled by their members, who actively participate in setting policies and making decisions.

3. Members' Economic Participation

Members contribute equitably to, and democratically control, the capital of their cooperative.

4. Autonomy and Independence

Cooperatives are autonomous, self-help organizations controlled by their members.

5. Education, Training, and Information

Cooperatives provide education and training for their members, elected representatives, managers and employees so they can contribute effectively to the development of their cooperatives.

6. Cooperation Among Cooperatives

Cooperatives serve their members most effectively and strengthen the cooperative movement by working together.

7. Concern for Community

While focusing on member needs, cooperatives work for the sustainable development of their communities.

I can think of numerous examples of cooperatives that have stayed true to these principles and are walking the right path.



Michael Peters and his son, Barrett. Peters is president and CEO of the Michigan Electric Cooperative Association. His email address is mpeters@countrylines.com.



See the Soo

Photos – Sault Convention & Visitors Bureau

The busy waters of the St. Mary's River ensure that Sault Ste. Marie never loses its undercurrent of excitement and possibility. **Linda Sirois**

An old French word, “sault” describes the turbulent rapids and waterfalls that have caused river traffic to pause and linger for hundreds of years in Sault Ste. Marie. Since its European settlement in 1668 by Jesuit priest Jacques Marquette, this area where lakes Superior and Huron are joined by the river has been a lively crossroads of trade, travel and activity. Even earlier, generations of Ojibwa people gathered at “the cascading rapids” to harvest the abundant resources of whitefish, maple sugar and fur.

“The river defines the town geographically and historically,” says area resident Will Fowler, who wears many hats as an employee of the local bookstore, member of the Chippewa County Theatre Guild, and employee of Sault Historic Sites. “So many groups have had influence on the area—each group has left its mark.”

A Crossroads and a Destination

Sault Ste. Marie, or “the Soo,” has a tradition of being a place to re-stock provisions and relax. This second largest U.P. city is also the oldest European settlement in the Midwest and combines small town friendliness with enough authentic attractions to please the whole family.

“It’s a very friendly city,” says Linda Hoath, lifelong Cloverland Electric Co-op member and director of the Sault Ste. Marie Convention and Visitors Bureau. The Sault area is an ideal home base for the numerous day trip destinations located just a short distance away. Traveling time is a few minutes by bicycle, foot or car within the compact downtown waterfront area, and a few minutes to a few hours to the natural beauty, history and fun

the eastern U.P. offers.

The International Bridge spans the St. Mary’s to join the U.S. and Canada, and offers easy access to the sister city of Sault Ste. Marie, Ontario (call U.S. Customs at 906-632-2631 for border-crossing rules).

History FUN!

Fun is never separate from history in Sault Ste. Marie. The Tower of History features an amazing panoramic view of 1,200 square miles, including the Canadian side of the river, for those who take the high speed elevator 210 feet up to the observation decks.

From the top of the Tower, the Museum Ship *Valley Camp* can be seen a short distance away. This retired Great Lakes freighter has 20,000 square feet of exhibits and re-creations of the ship’s heyday as an iron ore and taconite carrier. Visitors can wander the crew’s quarters and pilothouse, view recovered artifacts from the *Edmund Fitzgerald*, and sense the sheer volume of a Great Lakes ship, which is only about one-half the size of freighters cruising today.

The newly-opened River of History Museum beautifully displays information about the diverse cultures and development of the St. Mary’s River system and Sault area. In the same building is the Interpretive Center for the Sault Tribe of Chippewa, a free learning experience featuring native artwork, craft displays and a tribal library.

Money-saving combination tickets are available for the three venues above (visit sault-historicsites.com or call 888-744-7867).

A national historic site, the American Soo Locks (Visitor’s Center: 906-253-9101) should not be missed. This engineering marvel allows ships that are 1,000 feet long



to narrowly negotiate the 21 feet of difference in water levels between lakes Huron and Superior. The Soo Locks Boat Tour (906-632-6301) uses double-decker boats to take visitors along the St. Mary’s and through the Locks.

Rarely open to the public, the block-long former Edison-Sault Hydroelectric Power Plant—now owned by Cloverland Electric Cooperative—is a dazzling work of circa 1898 cut-stone architecture, with “hidden” lighthouse columns.

Other attractions include the Great Lakes



Photo - Soo Locks Boat Tours

Photos - Linda Sirols

Opposite: The International Bridge to Canada (top), with one of three train bridges behind it, and a freighter preparing to pass through the Soo Locks. The historical homes (bottom) of John Johnson, Bishop Baraga and Henry Schoolcraft flank Sault Ste. Marie's city marina, with the Tower of History museum and its observation decks spiraling in the background.

Above (clockwise, from top left): This eagle fountain on the corner of Portage and Ashmun represents the Soo area's history, according to Lee Brown, director of the Downtown Development Association, and marks the location of the Farmer's Market that sets up for business each Wednesday evening and Saturday morning during the warmer months. • A freighter follows a tour boat through the Soo Locks. • Genny Kaunisto, a Cloverland Electric Co-op member, serves up a smile and delicious drinks and Mexican fare at the colorful, historic Palace Restaurant and Saloon. • This humorous clock face is one of many quirky creations at Riverstone Gallery. The owners recycle outmoded electronics and camera parts into unique clocks and jewelry. • Eric and Kathy Demaray represent 55 local artists in their Sault Realism gallery on Portage Ave., as well as offering printing, mounting, and framing of artwork.

Shipwreck Historical Society, and St. Mary's, Michigan's first Catholic church. The current building is the fifth on this site and dates from 1881.

Local storyteller Jim Couling, also known as "Woodsmoke Jim," delights in leading his Twilight Walking Tours (twilightwalkingtours.com or 906-440-5910), which offer tales that combine history and mystery.

"Each story is a gem," Couling says, adding that he loves sharing his enthusiasm for "cool and creepy untold stories." Some of the untold stories focus on his "Strong Women

of the North" tales. "Their [the women's] stories are compelling," he says. With his wife Mary, who adds her vocal talents, they offer family-friendly evening strolls that depart appropriately across from the Haunted Depot on Portage Avenue.

Historic Sugar Island is just a hop away by ferry. Be sure to try the funky 1949 Clyde's Drive-In restaurant near the ferry landing.

Speaking of Food...

Even eating is more fun in the Soo. Try shipwatching at the riverfront while feasting on

fresh whitefish, fine dining at the Ramada Inn Ojibway (National Historic Landmark), or tasty Mexican specialties at the renovated 1903 Palace Restaurant and Saloon. Zorba's serves up Greek, and Cup of the Day boasts great coffee, specialty sandwiches and homemade soups. Owner Anthony Stackpoole keeps a bowl of fresh water just outside the door for passing four-legged friends.

Unforgettable family dining awaits at the award-winning Antler's Restaurant on Portage Avenue, where about 500 antler racks and animals—real and frankly fake—enliven the atmosphere from their perches on the walls and ceiling. Legend has it that among the names under which it has operated, the "Bucket of Blood Saloon and Ice Cream Parlor" is the most colorful. The Antlers offers homemade hamburger buns, twice-weekly fish fries, and delicious steaks. Their beer-of-the-month feature and traditional Paul Bunyan burgers are in demand by local Lake Superior State University students. (*Hint: the steak bites on garlic bread and s'more cheesecake are amazing.*)

A Lively Arts Scene

Shopping, theaters and art galleries are scattered throughout the Soo. Sault Realism, an art gallery run by Eric and Kathy Demaray, offers a mix of locally-created paintings, jewelry and photography. Some of the retro prints shown were taken by Eric's grandmother, nationally known photographer Marion Stahl Boyer.

Nearby is Riverstone Gallery, specializing in Michigan and Sault art. Owners Gregory and Donna Steele, and daughter Allyson Schwartz, shape one-of-a-kind jewelry and clocks from re-purposed materials.

The Alberta House Art Gallery has traveling exhibits and a gift shop. Mahdziwin, on Ashmun St., is owned by the Sault tribe and offers original Native American artworks. Kewadin Casino also has a large gallery and gift shop with Native creations.

A recent "Cool Cities" grant has allowed the local drama community to renovate and use the historic Stars Theatre (906-632-1930), on Ashmun St.

The river's special energy, collaboration among diverse cultures, and a strategic location make the Soo area an unforgettable destination with a charm found nowhere else.

"Sault Ste. Marie has found its own," explains Hoath. "We are not Mackinaw City, we are not Mackinac Island, we are not St. Ignace. We are Sault Ste. Marie."

To plan your trip to "The Place Where Michigan Was Born," see saultstemarie.com or call 800-647-2858.

Unique in the U.P.

Take a Michigan vacation this summer by visiting Keweenaw Bay in the western Upper Peninsula. *Kath Usitalo*



Bill and Nancy Leonard are the owners of the Einerlei Shop in Chassell. Much of the area is served by Ontonagon County REA.



Teresa Palosaari's Country Craft Cabin offers soaps, rag rugs and honey, among other things.

To know Bill and Nancy Leonard is to wander through their airy, two-story Einerlei Shop at the heart of Chassell in the Keweenaw Peninsula. Every artfully arranged item, from handcrafted jewelry to kitchen gadgets and gourmet foods, garden plants, pet

accessories and books, is a reflection of their interests. *Einerlei*, German for "one and the same," expresses their goal of combining work and play. It's a philosophy that has guided them to the 35th anniversary of their one-of-a-kind store, involvement in their adopted hometown, and 45 years of marriage.

The couple had vague plans to "do something on our own" when they left Indiana and their careers—his as an engineer, and hers as a special education teacher—in their VW camper in 1973. "We were kind of Hippie-ish," says Nancy, when they happened upon Houghton and stayed "to see what it was like to live with a lot of snow." An avid sailor, Bill says, "Big water attracted us." They also liked being close to Michigan Technological University.

"Let's sell something!"

Two years after arriving in the U.P., the couple launched Einerlei on a lark, "because we had store windows," says Nancy of the building that had housed a restaurant and barbershop. "Let's sell something!" they said, and opened shop with handcrafted items and furniture they refurbished.

Gradually, they added inventory to reflect their home and garden interests, renovating the building in phases to make room for the works of local artists and musicians, greeting cards, housewares and apparel. The variety appeals to their clientele, a mix of tourists, locals, and the Michigan Tech and Finlandia University communities. "When I buy for the new year, I try to redefine (the shop). We have to constantly change, and that's great because it keeps us interested," Nancy says. "I try to find companies that are doing good on their own," she adds, preferring those that donate to causes, deal in fair trade, and are conscientious about packaging.

Community Center

The couple is also active with local historical, business improvement and tourism committees, and Humane Society fundraising. Bill was township supervisor for 12 years, and Nancy's passion for vintage clothing inspired "Friends of Fashion," a volunteer group that preserves historic apparel and presents pageants depicting those who wore it.

The Leonards also serve as the unofficial Chamber of Commerce, readily sharing



The Einerlei Shop has an ever-changing collection of unique clothing.

tips on what to do in the area. In summer, mountain bikers and hikers hit the Chassell Classic cross-country ski trail, and paddlers enjoy Chassell Bay and the Keweenaw Water Trail. The Chassell General Store carries everything from instant toothache pain relief to extension cords, refurbished computers, Vollwerth's sausage, fishing lures and fresh fruit. Across the street, Treats and Eats offers ice cream and makes sandwiches for easy picnics at Centennial Park, with its playground, fishing pier and sandy beach on Chassell Bay.

A Berry Good Time

The waterfront was the site of a sawmill built in 1887, and lumbering reigned until the mill closed in 1928. Farmers realized the area was ideal for growing strawberries and Chassell became a major supplier. The story is told in the "Lumber Kings to Strawberry Kings" exhibit at Chassell's Heritage Center Museum. Housed in a handsome former school, the Center is a Heritage Site of the Keweenaw National Historical Park. It's open summer Tuesdays and Thursdays, with a variety of Thursday evening programs.

A handful of berry growers, some with U-Pick farms, remain in the area and Chassell celebrates with the annual Copper Country Strawberry Festival (July 9-10). It features parades, entertainment, an arts and crafts sale, whitefish "boil" and famous strawberry shortcake. Folks gather at the park pavilion to clean and



In L'Anse, Lynn Ketola built the Ivory Mansion Bed & Breakfast to offer unique lodging and keep her family's homestead.

prepare 1,200 quarts of strawberries for the signature treat.

Along U.S.-41

Roadside attractions near Chassell include the Bishop Baraga Shrine, a towering monument overlooking Keweenaw Bay, and birders flock to the Sturgeon River Sloughs, a designated wildlife viewing area. Teresa Palosaari's Country Craft Cabin is filled with soaps, rag rugs and honey, and a bright red sign signals North Entry Road. A giant bear trap at the Bear Trap Iron Works is a can't-miss photo stop.

Houghton offers a variety of lodging, but for a unique alternative, check into the Ivory Mansion Bed & Breakfast in L'Anse.



Stop at the Baraga Drive-In for a quick meal, ice cream and a friendly welcome.



The Chassell General Store has "a little bit of everything," from garden tools to canned tuna and firewood.

Golf for **\$39***
Black Bear Golf Club
Call Tee Time Hotline Now!
866-983-4441

www.golfblackbear.net

Gaylord golf at its best!

** Includes free cart, lunch and range!*



If you want the very best value for your money, come to...

AMERICAS BEST VALUE INN
of Mackinaw City this summer.

Rates start as low as **\$69**

Call **800-647-8286** and ask for the *Country Lines* discount!

www.abvimackinawcity.com

Reach over 250,000 households with
Country Lines classifieds.

See page 26 for information, or place your ad online at countrylines.com.

2011 Farm Tours

COSTA RICA

11 Days - Departs Jan. 15, 2011
from \$1399*pp

Visit the highlights including wildlife preserve, rainforest, cloud forest, rivers, coastlines, & working farms!

Fly to San Jose, tour/visit the mountains & rainforests. Take a riverboat cruise through Tortuguero National Park & tour a banana plantation. Visit the Alma Ata Archaeological Park & Arenal, an active volcano with thermal mineral pools, waterfalls & hot springs. Tour a farm with pineapples, orchards, grasslands, cheese making demonstration. Visit the Monteverde Cloud Forest Reserve with a tour, enjoy a boat tour on the Tempisque River by the Palo Verde National Park with an amazing variety of birds & animals. Delight in the beaches on the Pacific coast. Stop at the Doka Coffee Estate, then gather for a farewell dinner including a Folkloric Show.

**Plus \$159 Tax Service & Gov't Fees. Call for low cost airfare.*



HAWAII

Four Islands - 15 Days
From \$1879*pp

Maui, Oahu, Kauai & Hawaii...

Departs Mondays Jan 2011. Includes Inter Island airfare. Escort on each island. Staying in Oahu, Hawaii (Kona & Hilo), Maui & Kauai. Sightseeing includes Honolulu City Tour with Pearl Harbor, Volcano National Park, Kona Coffee Plantation, Parker Cattle Ranch Museum, Orchid Nursery, Macadamia Nut Factory Tour, Waialua Riverboat Cruise, Fern Grotto, & More.

**Plus \$149 Tax Service & Gov't Fees. Call for low cost airfare.*



YMT Vacations

Call for information & itinerary **800-888-8204**

The Next Water Heater

New heat pump water heaters may signal the rebirth of an energy-saving technology. **Alice Clamp**

Cold showers aren't a pleasant way to start the day, and hot water plays a hefty role in cooking and cleaning, too. As a result, water heating has become the second largest energy user in an average home, accounting for approximately 20 percent of residential energy use.

To save energy, consumers have wrapped water heaters in blankets or wrapped hot water pipes in insulation. While those practices should continue, a new type of water heating product is entering the market, promising to lower energy consumption and save consumers money.

Heat pump water heaters, while not a new technology, are experiencing a rebirth. A handful of small companies produced units in the 1980s and 1990s. But random failures and other issues (such as the need for utilities to install special electric service to power the devices) soured consumers on the technology.

In addition, many electric co-ops offered (and still offer) load management programs that depended on briefly shutting off standard electric resistance water heaters (which can store hot water for many hours) as a way to cut electric use during times of peak demand when power prices skyrocket. These programs, in turn, helped co-ops keep electric bills affordable. Heat pump water heaters, unfortunately, could not be used in these efforts.

Now, some major water heater manufacturers and other appliance companies have entered the market with a new and improved generation of heat pump water heaters. Many electric cooperatives are currently testing these products for possible deployment in their service territories—a critical step in determining whether they will really help consumers save energy and trim electric bills.

How They Work

Heat pump water heaters come in two types. The more expensive “integrated” model replaces an electric resistance water heater with one that combines a heat pump with a storage tank. The second version adds a heat pump unit to an existing electric tank.

In both versions, a heat pump circulates a refrigerant, which absorbs heat from surrounding air before it passes through a compressor to maximize heat output. Essentially, heat drawn from the air transfers to water in the tank.

While a heat pump water heater can produce most of the hot water a family requires, a backup electric resistance element in the tank takes over when outside air becomes too cold or consumers need extra hot water. In summer, cool exhaust air can be released into the vicinity where the heat pump water heater is located, assisting home cooling, or it can be returned outside through ducts.

Because a heat pump water heater uses electricity to move, rather than generate, heat, it consumes roughly half the electricity of a conventional electric resistance model. This



efficiency qualifies integrated heat pump water heaters for an Energy Star® rating, a first for electric water heaters.

But this added efficiency comes with a high price tag. Integrated units sell for \$1,400 to \$2,000—more than twice the cost of standard electric resistance water heaters. However, depending on your co-op's electric rate and the installed cost of a heat pump water heater, including any financial incentives, payback for the purchase can take as little as three years. In areas with low electric rates and limited financial incentives, though, the payback period can be much longer.

Heat pump water heaters are most efficient in warm and damp climates. Homes in those regions also benefit from the appliance's cooling and dehumidifying features.

A heat pump water heater needs space of at least 10 feet square to ensure adequate air exchange. An open basement, a utility room, or—in some areas—a garage, will work.

Noise becomes another consideration when deciding where to place a unit. While conventional electric resistance water heaters operate quietly, most heat pump water heaters boast noise levels similar to window air conditioners.

Heat pump water heaters are not a universal option. Residents in colder climates will see decreased performance during winter. In the Pacific Northwest, for instance, if the heat pump is designed to work at ambient air temperatures of 45° F or higher, the water heater's electric element will operate whenever air temperatures drop below that level, reducing energy savings.

To learn more, visit energystar.gov, and search for heat pump water heaters.

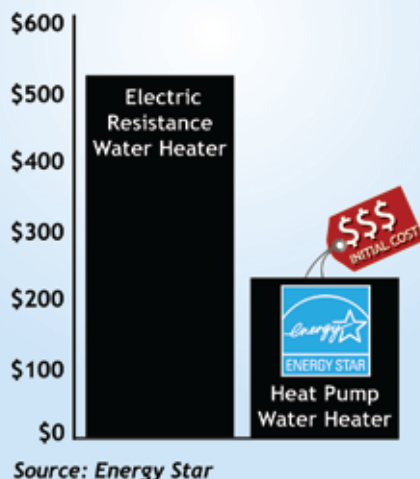
Alice Clamp is a technology writer for the Cooperative Research Network, a service of the National Rural Electric Cooperative Association.

Heat Pump Water Heaters Cost More Initially, But May Trim Electric Bills

Energy Star-qualified heat pump water heaters cost almost **twice as much** as standard electric resistance models, but may cut energy costs in half.

Annual Energy Costs (\$/Year)

Based on average household of 2.6 occupants, U.S. Census Bureau, 2006





WATERFURNACE HAS A SMARTER WAY TO COOL YOUR HOME

Wouldn't it be nice to set the temperature of your house based more on comfort and less on your bank account? As the temperatures rise and the price of fossil fuels skyrocket, homeowners around the world are finding that a WaterFurnace geothermal system is a smart way to **reduce your carbon footprint and utility bills at the same time**. WaterFurnace units use the **clean, renewable energy found in your own backyard** to provide **savings up to 70% on heating, cooling and hot water**. It's good for the environment, great for your budget and thanks to a **30% federal tax credit**, now's the best time to act. Visit us at waterfurnace.com to learn more and to find a local dealer.

YOUR LOCAL WATERFURNACE DEALERS

Bad Axe
B & D Heating
(989) 269-5280

Berrien Springs
WaterFurnace Michiana
(269) 473-5667

Big Rapids
Stratz Heating & Cooling
(231) 796-3717

Caro
All-Temp Heating
(989) 673-5557

Charlevoix
Ballard's and Great Lakes
Plumbing & Heating
(231) 547-1035

Cheboygan
Jim's Handyman
(231) 627-7533

Carsonville
Certified Temperature Innovations
(810) 300-7748

DeWitt
S & J Htg & Clg
(517) 669-3705

Gaylord
Family Htg & Clg
(989) 732-8099

Grand Rapids
Montgomery Htg & Clg
(616) 459-0261

Hart
Adams Htg & Clg
(231) 873-2665

Harbor Springs
Ballard's and Great Lakes
Plumbing & Heating
(231) 526-6859

Ionia
Home Experts
(800) 457-4554

Lapeer
Porter & Heckman
(810) 664-8576

Michigan Center
Comfort 1 Heating /
Lenawee Heating
(517) 764-1500

Mount Pleasant
Walton's Htg & Clg
(989) 772-4822

Muskegon
Geofurnace Htg & Clg
(800) 922-3045

Petoskey
Ballard's and Great Lakes
Plumbing & Heating
(231) 347-3900

Palms
Lakeshore Improvements
(989) 864-3833

Traverse City
Geofurnace Htg & Clg
(231) 943-1000

D&W Mechanical
(231) 941-1215

Webberville
Applegate Home Comfort
(800) 377-2272

Zeeland
Mast Heating
(616) 772-2252



Do the Math! Kids Need It; You Can Help!

In the collective rhythm of our lives, summertime has become the mellow jazz of the year, especially for our kids. A growing number of students, however, are picking up the tempo by tackling some summer-time learning.

Adding motivation for high school students are the Michigan Merit Graduation Requirements. Starting with the class of 2011, these standards require *every* student to master rigorous subjects like Chemistry, Physics, and Algebra 2.

Since no subject seems to cause more anxiety than math—Algebra 2, to be exact—I asked math experts for some tips.

STARTING THIS SUMMER

Target your help – Discover where your teen's strengths and weaknesses were in last year's math classes. This will uncover areas where you could catch up or get a jump-start on next year.

"Ask for worksheets or assignments for students to work on over the summer," says Jamie Wernet, a math tutor and high school teacher. "Or explore websites that offer free math games, tutorials, worksheets, and more."

Plan and practice – All too often the summer can slip away, regardless of the best intentions. Schedule study sessions and follow it. Take advantage of summer schools if one is offered.

"Summer schools often offer smaller classes or a different approach to the material," says Wernet.

Study the standards – Review local and state standards, which explain what your child will be expected to learn each year (see sidebar).

"What does it mean to 'pass Algebra'? List the topics found in the standards and make sure your child is learning them," urges W. Michael Kelley, author of a series of math guides for people who don't "speak math."

AFTER SCHOOL STARTS

Be visible and accessible – Introduce yourself to teachers early on. Let them know

you're interested in your child's progress. Ask if there is a class website or other way to track when assignments are due.

"Send an email early so that the teacher has easy access to your email address," says Wernet.

Learn what to expect – Ask about the textbook or curriculum used. Does the teacher use a traditional approach, or one that emphasizes group work, problem solving, and investigations? What will a typical lesson look like? How much homework should you expect?

"Math instruction doesn't always look the same as when parents were in school, and that's okay!" Wernet says.

Keep students on track – Have a set time to work or study a little every day. Often, success hinges on just keeping up with daily assignments.

MOTIVATING RELUCTANT LEARNERS

Uncover the root – Is it boredom? Discouragement? Confusion? Then match the remedy to the cause.

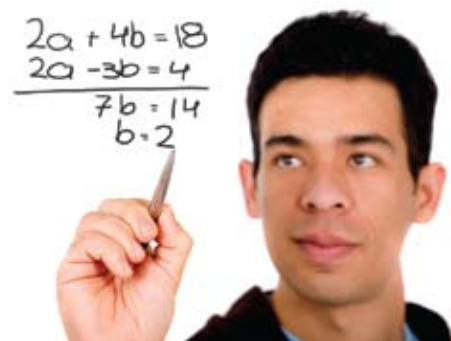
Create a can-do attitude – Kelley says some parents believe their children will fail math because they, themselves, failed the subject. *Never* give any child the idea that it's okay to give up on math.

"Avoid comments like 'I was never good at this stuff' or 'I never use this math,'" Wernet says. "If you need to, study the material yourself!"

Use positive peer pressure – Find a compatible study buddy who challenges your teen, and arrange regular homework sessions together. It gets students talking about math, and each might take different things from the lesson. "It's easier to do anything if you're not alone," says Kelley. Plus, a little healthy competition can motivate them to complete work well and on time.

TIME FOR A TUTOR?

Don't wait – Once a student falls behind—for any reason—or feels discouraged, both Kelley and Wernet urge families to seek help



©iStockphoto.com/Andres

right away—especially if you know your own math skills are rusty.

Look for quality and passion – Ideally, families should look for a certified math teacher, but there are other options: college students, retired or unemployed teachers, tutoring centers, or online tutoring. Look for one that fits your budget and your child's personality—and who is passionate about math.

Don't sell yourself short – According to Kelley, parents are willing to help out with just about everything *except* math and science, especially in higher grades. His series of "Humungous" guides (see sidebar) provide very detailed answers to math problems, showing you how to work out every problem, and they don't skip steps.

"A surprisingly large share of my readers are adults determined to master what they never understood in school," Kelley says. "Parents are using my books to learn the material so they can help their own children."

So enjoy the lazy, hazy days of summer, and allow kids time to dance to their own music. But do what it takes to start September on a strong note.

"There is no shame in asking for help," Kelley says. "Asking for help when you're already hopelessly lost is too late."

RESOURCES

The Humongous Book series of math study guides by W. Michael Kelley makes the intricacies of math perfectly clear. Look for *The Humongous Guide to Algebra*, and similar titles for Geometry, Statistics and Calculus.

Online math sites like aaamath.com and hotmath.com offer worksheets, games and more.

Michigan's High School Content Expectations (HSCE) describe what students need to master before they graduate. Review them for math and other subjects at Michigan.gov/mde (select "parents and family" at left).



Little BEANS - Big BENEFITS!

Soybeans play an important role in Michigan's economy. According to the latest census, the soybean crop is 2nd only to corn in value of field crop production with a total impact of over \$1 billion. Over 2 million acres are planted to soybeans annually in Michigan. Instate soybean processing represents a total economic impact of \$44 million and soybean farming results in nearly 7,000 jobs. Soybeans are little beans with big economic benefits!

*For more soybean information visit
www.michigansoybean.org.*





© iStockphoto.com/Angel Rodriguez

Chicken

Did you know? Hong Kong is the only place in the world where people consume more chicken per person than the United States. Find many more recipes from readers at **countrylines.com**.

Sour Cream-and-Dill Chicken

8-10 skinned chicken pieces
 1 10¾-oz. can cream of mushroom soup
 1 envelope dry onion soup mix
 8 oz. sour cream
 1 T. lemon juice
 1 T. freshly chopped dill or 1 t. dry dill weed
 1 4-oz. can sliced mushrooms, drained
 pepper to taste
 paprika
 wide egg noodles, cooked

Place raw chicken in a single layer in a 9x13-inch baking pan. Sprinkle with pepper. Combine mushroom soup, dry soup mix, sour cream, lemon juice, dill and mushrooms; pour over chicken. Sprinkle with paprika. Bake, uncovered at 350° for 1 hour or until chicken is tender. Meanwhile, prepare egg noodles according to package directions. Serve chicken over noodles.

Barbara Palzewicz, Daggett

Tuscan Chicken

1 lb. boneless chicken breasts, cut into cubes
 2 cloves garlic, minced
 2 T. olive oil
 4 c. cubed potatoes
 1 med. bell pepper, diced
 1 jar pasta sauce
 1 10-oz. pkg. frozen green beans
 salt and pepper to taste

Sauté chicken and garlic in olive oil until lightly browned. Add potatoes and peppers and cook 5 minutes; stirring occasionally. Add sauce, beans, salt and pepper; bring to a boil. Reduce heat, cover and simmer for 35 minutes until chicken is cooked and potatoes are tender.

Mary Waterbury, Fenton

Baked Taco Chicken

1 c. all-purpose flour
 2 envelopes taco seasoning
 1 t. salt
 2 eggs
 2 T. milk
 2 3-4 lb. broiler/fryer chickens, cut up

In a large re-sealable plastic bag, combine flour, taco seasoning and salt. In a bowl, beat eggs and milk. Dip chicken pieces in egg mixture, then place in bag and shake to coat. Place chicken pieces on a foil-lined 10x15-inch baking pan. Bake uncovered at 350° for 55-60 minutes or until juices run clear.

Naomi Yoder, Scottville

Cheese Nip Chicken

4-6 boneless chicken breasts
 4 c. crushed Cheez-It® Crackers
 1 c. crushed Cheez-It® Crackers
 8 oz. sour cream
 1 stick butter, melted

Place chicken in a baking dish, spread evenly with sour cream, then sprinkle with crushed crackers. Pour melted butter over crackers. Bake uncovered at 375° for 1 hour.

Helen Benner, Lansing

Wild Rice Casserole

1 c. wild rice
 1 lg. onion, diced
 2 c. diced celery
 1¼ c. diced green pepper, optional

1/2 c. sliced mushrooms
 1 can cream of mushroom soup
 1 can cream of chicken soup
 1 soup can cold water
 2-3 T. soy sauce
 2-3 lbs. cooked, skinless chicken breasts

Wash rice and cover with warm water; let set for 3 hours. Sauté onion, celery and green pepper; combine with soy sauce, soups and cold water. Add rice and mushrooms. Gently fold-in chicken. Place all in a buttered casserole dish. Bake at 325° for 1½ hours.

Mandy Rebore, Interlochen

Tarragon Chicken with White Wine

4 lbs. chicken cut into pieces
 2 T. butter or margarine
 2 T. oil
 1 lg. onion, chopped
 2 T. flour
 1 c. white wine, Inglenook® Chablis is best
 1 T. tarragon
 grated rind of 1 lemon
 chopped parsley for garnish

Brown chicken in combined oil and butter; set aside. Sauté onion in the same butter. Add flour and gradually add wine, stirring in browned pieces from bottom of pan. Add tarragon; cook until sauce has thickened. Return chicken to pan; cover and cook for 50 minutes or until done. Garnish with grated lemon and chopped parsley.

Duane Alword, Port Sanilac

Chicken Salad

2 c. whole seedless green grapes
 3+ c. cooked and cubed chicken breasts
 1 c. cashew halves
 1/8-1¼ c. sesame seeds
 1 T. butter at room temperature, or melted
 1 c. sour cream
 1/2 c. mayonnaise
 1 T. tarragon vinegar
 1 t. salt
 pepper to taste

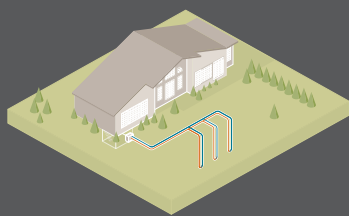
In a large bowl, combine chicken and butter. Add remaining ingredients; mix well. Chill before serving. Serve in a pita pocket, alongside a croissant, or on top of a tomato cut into eighths served on a bed of lettuce.

Jeanne Stewart, Lansing

► **Send in your recipes!** If published, you'll receive a free kitchen gadget. Send in: **SANDWICH recipes by Aug. 10, STIR FRY recipes by Sept. 10, and your ALL-TIME FAVORITE previously published Country Lines recipe by Oct. 10** (no gadgets this category). Mail to: Country Lines Recipes, 2859 W. Jolly Rd., Okemos, MI 48864; or email jhansen@countrylines.com.

DIG HERE, SAVE THOUSANDS.

30% TAX CREDIT
CUT ENERGY BILL IN HALF
FINANCING AVAILABLE



An underground loop system and the constant temperature of the Earth combine to create a comfortable climate in your home.

For deep savings on your energy bills, look no further than your own backyard. With a ClimateMaster Heating and Cooling System, you get a 30% tax credit and can save more than half on your energy bill. ClimateMaster uses geothermal energy to tap the constant temperature of the Earth, keeping your home comfortable year-round. Best of all, a new system usually pays for itself in about five years and is a cleaner choice for the environment. If you're ready to uncover extra cash each month, visit climatemaster.com.



climatemaster.com

Ann Arbor
Jetstream Mechanical
734-668-8010

Cadillac
Cornwell Mechanical
231-429-2996

Charlevoix
MacGregor Plumbing
and Heating
231-526-9633

Eaton Rapids
Stahl & Sons, Inc.
517-663-4102

Evart
Geo Connection, LLC
231-734-0227

Harbor Springs
MacGregor Plumbing
and Heating
231-526-9633

Lansing
Doty Mechanical
517-327-7777

Lowell
Canfield Plumbing
& Heating, Inc.
616-897-0887

Mt. Pleasant
Custom Heating &
Plumbing
989-772-5568

Muskegon
Assured Comfort
Heating & Cooling Inc
231-744-7571

Sault Ste Marie
Albert Heating &
Cooling, Inc.
906-632-6900

Sunfield
Mark Woodman
Plumbing & Heating
517-566-8388

Traverse City
Team Bob's Heating,
Cooling & Plumbing
231-941-4064

Co-op Member *Gardeners*

From the Ohio border to the U.P., gardening is a common interest throughout electric co-op territories in Michigan.

There is no shortage of gardeners among electric co-op members. From vegetable gardening to growing fruits, berries and flowers, co-op members do it all. This spring, while not tending my own garden, I talked to a few co-op folks who garden for fun and profit. They shared their stories and a few green thumb tips.

I'm always looking for an excuse to stop at Burdock Farm Greenhouse, in Dafer, to shop for plants and talk to Karen Bartunek, whom I've known for years. Now retired from the Sault Area Schools, this Cloverland Electric Co-op member runs a small business in a country setting. She sells plants

and gifts to area gardeners. Her business could be described as 'a passion for gardening that got out of hand.'

"It's something that evolved," explains Bartunek. "I grew plants for myself and pretty soon had too many and started selling them to neighbors. So I decided to try it on a bigger scale—this is big enough," she says with a chuckle.

Bartunek mostly enjoys starting plants from seed, though it isn't practical, even on a small scale, to start enough plants from seed to supply to area customers. Still, she manages to plant a number of things inside her house long before the snow melts. She germinates most of her seeds over heat tape and sometimes by placing germination trays on a cookie sheet over the pilots of a gas stove.

Assisting her in this endeavor is her 92 year-old mother, Belma. Karen's mother doesn't let a little arthritis keep her from her passion, which she obviously passed down to her daughter.

With the help of her daughters, who live on either side of her, Belma is able to continue doing something she loves. Each year she starts plants from seed in a spare bedroom, eventually hardening them off in a small greenhouse not far from her front door. With the help of a ramp and walker, Belma can mosey down to the greenhouse each day

At 92, Mrs. Hugo has been involved in growing things for 78 years. Her current garden includes broccoli, onions and garlic.



Karen Bartunek is the owner of Burdock Farm Greenhouse, in the eastern U.P., where she's turned her fondness for growing things into a small business by selling plants and gardening gifts.

to tend to her gardening chores. She uses a chair on wheels and a long-handled water wand to maneuver within reach of the plants in the greenhouse.

Eventually, some of the hundreds of plants Belma raises will be on the retail display racks at Burdock Farms, or they may just get potted up and placed where she can see them from her living room window.

"Oh, I just love it," said Belma, smiling as bright as the sun. "It keeps me going."

Bartunek's rustic garden center is large enough to offer a nice variety of plants, yet small enough for the personal service Karen offers her customers. She says helping her customers is what makes this endeavor worthwhile. "Most people come here in a good mood and leave in a good mood. You're making people happy."

My long-time friend and gardener, Brian Howard, of Blanchard, usually calls about the time asparagus is coming on in my garden. We compare notes on the weather and discuss what each of us is going to plant in the coming year. This year was no exception.

This summer, Brian and his wife, Priscilla, HomeWorks Tri-County Electric Co-op members, are busy adding to the 17 varieties of apple trees in their small orchard. "I grow a lot of apples for cider," Brian explains. "I also grow the Ida Reds for eating." They are also adding another 1,000 strawberry plants to the ones they were already growing for market, and they're planting another large



vegetable garden this year.

Brian understands strawberries—his family has grown them for years in the Remus area. He grows several different varieties, including Jewels, Early Glow, Sparkles (one of his favorites) and a variety that sets flowers a little later in the spring—Ovation—which increases the chances of escaping a late spring frost.

The Howards give away, sell or can what they can't eat fresh. They're always on the lookout for the least toxic controls for insects and disease, which he admits is difficult—but perhaps not impossible, even with apples.

Brian has always been involved in gardening and some type of agriculture. The former beekeeper grew up on a farm near Remus. His father sold farm equipment for Ford in the Mt. Pleasant area, and Brian spent summers helping his grandfather garden and eventually gardened with area 4-H kids. "A lot of my interest in gardening came from my grandfather," Brian says.

Mrs. Hugo (the only name I've known her by), is a new Cloverland Electric Co-op customer due to the Co-op's recent acquisition of Edison Sault Electric. She says she cultivated most of her love for gardening in Germany,

where she lived into her late teens.

Her first exposure to gardening was when she was about 14, and wanted to become a hair stylist. To enter this vocation, she was first required to work for a year, either in a home, doing domestic work, or on a farm. She chose a farm, and today is glad she did. On the farm she learned a lot about gardening.

"It was very fascinating to see a garden grow," she says of her first experience. She shuns the use of chemicals in her backyard garden, and has instead adapted some of the nonchemical insect control techniques of Jerry Baker (gardening author who coins himself 'America's Master Gardener') to grow her tomatoes, carrots and other veggies.

"There is a personal satisfaction when you see the vegetables grow," she says in her German accent. "There is so much pleasure."

Her words of advice? "Start out with a small garden and encourage your children to garden."

Neil Moran is the author of "North Country Gardening: Simple Secrets to Successful Northern Gardening," and "From Store to Garden: 101 Ways to Make the Most of Garden Store Purchases."



Get the Muck OUT!

New Re-sealable bag!

Marble size Aquaclear™ Pellets clear your lake or pond bottom.

Beneficial microorganisms. Restore balance in natural and man made surface waters. Increase water clarity. Improve water quality. Eliminate black organic muck.

A **10 lb. bag** treats .50 to 1.0 acres—\$62.95

A **45 lb. carton** treats 2.5 to 5.0 acres—\$239.95

Apply weekly for 4 weeks, then monthly to maintain. No water use restrictions! **FREE SHIPPING!**

800-328-9350

www.KillLakeWeeds.com/781X

Write for FREE information:

AQUACIDE CO.

Our 55th year

PO Box 10748, **DEPT. 781X**

White Bear Lake, MN 55110-0748



Solar Electric Roofing



Own Your Electricity with Solar Instead of Renting it.

DTE Customers SAVE up to 80%

- ◆ Lower Your Utility Bills
- ◆ Gain Energy Independence
- ◆ Permanent
- ◆ One Day Install
- ◆ Can be Installed with Any Roof Type
- ◆ Lock in Energy Rates

Watch the DTE Video on FreedomSolarRoofing.com to see how Solar is Virtually FREE.

Call Now For a **FREE Solar Analysis:**

888-729-4618



Liberate Yourself from Utility Bills

METAL ROOFS

PERMANENT & BEAUTIFUL

PILOT HOME PROGRAM



For more information CALL:

888-221-1869

AmericanMetalRoofs.com

In the Upper Peninsula CALL:

888-854-1435

AmericanMetalRoofsWI.com

*Offices independently owned and operated.



5 Homes Wanted

If your home shows well & you will help us advertise our beautiful Metal Roofs, we would like to talk to you. Limited Availability. This is not a free roof, but you will receive a deep discount if your home is chosen.

Call today for your **FREE ESTIMATE** and to schedule an appointment to see if your home qualifies. Ask for Jean.

\$1500 TAX CREDIT

FINANCING AVAILABLE

Visit our Showrooms

6140 Taylor Dr.
Flint, MI. 48507

1875 Lansing Rd.
Charlotte, MI. 48813

3125 Birch Rd. Ste 1
Suamico, WI. 54173



Metal Roofs Are Cool

Metal roofs save energy by keeping homes cooler during summer. And they look good, too.

Many—but not all—metal roofs qualify for the federal energy conservation tax credit for 2010. Metal roofs save energy by keeping your house cooler in the summer, which can dramatically improve comfort and reduce electric bills if your home is air-conditioned. In winter, a metal roof has little impact on the energy efficiency of your house.

Generally, to qualify for the energy tax credit the roof must meet Energy Star® qualification standards. For roofing, this means the TSR (total solar reflectivity) must be greater than 25 percent when new and 15 percent after three years of aging. To be sure the roofing qualifies, ask for the specifications and a manufacturer's certification statement (MCS). It pays to be diligent these days: I recently got quotes on a roof installation, and several roofers told me their asphalt shingles qualified for the tax credit. In actuality, they did not qualify.

The amount of the tax credit is 30 percent of the roofing materials cost (not installation expenses), up to a maximum of \$1,500. Use IRS form 5695 to apply for the tax credit and save the payment receipt and MCS in case of a tax audit.

For my own home, I eventually selected an aluminum roof by Classic Metal Roofing Systems. It is made from 98 percent recycled aluminum, and the one-by-two-foot panels are formed to simulate cedar shakes. It's attractive and certainly unique: many neighbors were stumped trying to figure out exactly what it is.

To install the aluminum panel roof, a special film underlayment was nailed down with plastic clips and stainless steel fasteners over the existing shingles (which saved the expense of tearing off the old shingles). Each aluminum panel interlocks with the adjacent ones on all four sides. The top of each panel is held down by a stainless steel nail through a hole in the upper corner and an aluminum clip attached midway across the top. It is designed to withstand up to a 120-mph wind.

Although it is more expensive to install than an asphalt shingle roof, my new metal roof will never have to be replaced. From a lifetime cost comparison, it is cheaper than



The metal roofing panels are installed over the underlayment. Hidden stainless steel nails and aluminum clips are used to secure each panel.

installing an asphalt roof every 20 to 30 years. I also get a 3 percent reduction on my homeowner's insurance because of the reduced fire hazard.

Most metal roofs reflect more of the sun's heat than asphalt shingles, particularly black shingles. My Classic metal roof has a TRS of 0.43, whereas a black asphalt shingle roof has a TRS of only 0.05. This keeps the roofing materials cooler so less heat is radiated down through the ceilings to the living area. Also, the underside of the aluminum metal surface has lower "emissivity" (the ability to emit heat) than shingles, so even less heat radiates downward.

It was warm, sunny weather when my metal roof and ridge vent were installed, and the second floor was noticeably cooler than before.

The final energy advantage is that Classic's aluminum panels are relatively thin, with the contour of shakes formed into them. This contour creates an air gap between most of the roofing and the sheathing or shingles below it. This gap allows some outdoor air to naturally circulate up under the metal roof panels to keep them cooler. I sealed off my gable vents so outdoor air is now drawn in the soffit vents and exhausted out the ridge vent.

One minor drawback to the aluminum

shake panels is they can dent if you indiscriminately walk on the high points of the contour. This can be avoided by stepping on the lower nailed area of the panels. Contoured insulating foam pieces were placed under areas of the panels to provide walkways on the roof to clean my skylight and service the ridge vents.

Steel roofing is another option becoming more popular on homes. Painted standing seam or tile steel roofing is very durable. Instead of trying to simulate some type of standard roofing material, their bright colors and unique appearance are signatures of upscale homes. The finish coating on aluminum and steel often uses a Kynar®-based paint with heat reflecting additives in a multistep process.

These companies offer metal roofs: American Metal Roofs, 888-221-1869, americanmetalroofs.com; Classic Metal Roofing, 800-543-8938, classicmetalroofingsystems.com; Conklin Metal, 800-282-7386, met-alshingle.com; Follansbee Steel, 800-624-6906, follansbeeroofing.com; and Met-Tile, 909-947-0311, met-tile.com.

Questions? Send inquiries to: James Dulley, Michigan Country Lines, 6906 Royalgreen Dr., Cincinnati, OH 45244 or visit dulley.com.

Nature's Majesty

On Grand Display!

A Bradford Exchange Exclusive



**17 Inches
Wide!**

**Sculpted 10-point antler
display rack is hand-crafted
and hand-painted**

**\$90-value display is yours
at a significant savings**

Full display shown much smaller than actual size of
15 inches high x 17½ inches wide (38.1 x 43.8 cm)
Plates measure about 5½ inches high x
7¼ inches wide (13.9 x 18.4 cm)
Includes built-in hanging device for
fast and easy display.

**Features the acclaimed art
of Greg Alexander**

**Each full-color plate is
crafted of lustrous
*Heirloom Porcelain®***

A trophy collection for your wall

Now award-winning artist Greg Alexander's thrilling deer imagery makes a dramatic statement in your home presented on a fully-sculpted rack of antlers. Three of Mr. Alexander's most highly-sought artworks are hand-crafted in full color on *Heirloom Porcelain®* plates, and displayed upon a grand (17 inch-wide) hand-painted sculpture of 10-point trophy antlers. A \$90 value, it's yours for the same cost as one plate! A wood-toned plaque with the title adds a handsome finishing touch.

Exceptional value; satisfaction guaranteed

Strong demand is expected for the *Nature's Majesty* collection. Act now, and acquire all 4 editions (three *Heirloom Porcelain* plates and the custom-designed wall display) at the \$39.99* issue price, payable in two installments of \$19.99 each, and backed by our 365-day guarantee. You'll receive one edition about every other month, and you may cancel at any time. Don't miss out. Send no money now. Just return the Reservation Application today!

www.bradfordexchange.com/natures

©2010 BGE Printed in U.S.A. 01-02418-001-BI

RESERVATION APPLICATION

SEND NO MONEY NOW

**THE
BRADFORD EXCHANGE
-COLLECTIBLES-**

9345 Milwaukee Avenue · Niles, IL 60714-1393

YES. Please reserve the *Nature's Majesty* Collection for me as described in this announcement.
Limit: one per order.

Please Respond Promptly

Mrs. Mr. Ms.

Name (Please Print Clearly)

Address

City

State

Zip

901809-E73191

*Plus \$7.99 shipping and service per piece. Limited-edition presentations restricted to 95 firing days. Please allow 4-8 weeks after initial payment for shipment of Edition One. Display shipped after Edition One. Sales subject to product availability and order acceptance.

State Denies Air Permit For Rogers City Power Plant

The State of Michigan denied an air quality permit for the Wolverine Clean Energy Venture (WCEV) power plant in May. The facility, proposed by Wolverine Power Cooperative for a site near Rogers City, MI, would use state-of-the-art technology to generate 600 megawatts of electricity.

After more than 900 days of consideration, the state ruled the WCEV plant was not needed, was too costly, and negatively impacted the environment.

"We strongly disagree with the reasons for the denial," said Craig Borr, Wolverine's executive vice president. "The state's ruling was not based on the technical merits of the permit as it should be, but instead on factors such as cost and need—decisions best made by electric cooperative directors."

Wolverine submitted its application for the air quality permit to the Michigan Department of Natural Resources and Environment (MDNRE) in September 2007 and continued working on other permits needed to advance the project. The MDNRE approved both landfill and harbor expansion permits. A decision on the air permit was expected in 2009.

The Wolverine board of directors and management team are currently evaluating options for the WCEV plant, including a possible court appeal of the air permit denial.

"We will continue to focus, as always, on our mission to provide reliable, affordable power to our members," Borr said. "We remain confident in our ability to do so."

Headquartered in Cadillac, Wolverine is the power supplier to Cherryland Electric Cooperative, Great Lakes Energy, HomeWorks Tri-County Electric Cooperative, Presque Isle Electric & Gas Co-op, Spartan Renewable Energy and Wolverine Power Marketing Cooperative.

Presque Isle County Advance
Thursday, May 27, 2010 • Volume 132 • Number 21
Serving Presque Isle County Since 1878
Rogers City, MI 49779 • 75 cents

DENIED

State says no to Wolverine's permit request after nearly 1,000 days of consideration

by Richard Lamb
Advance Editor

Now what? With five years of planning and millions of dollars already invested in the project, that is the question facing Wolverine Power after its major permit was denied Friday. The Michigan Department of Natural Resources and Environment (MDNRE), with the support of the governor's office, said no to Wolverine's air quality permit, nearly 1,000 days after Wolverine filed the request.

After careful consideration of the issues and pursuant to the delegation of authority from the director of the MDNRE, I have denied permit to install No. 317-07, said G. Vinson Helling in his letter of denial dated May 21. Whether that letter ends Wolverine's attempts to construct a 600-megawatt state-of-the-art clean and fuel power plant in the Caliste quarry remains to be seen, but an appeal of the decision within 60 days in circuit court is a likely option.

Although Helling was the designated "decision maker" a press release from the office of Gov. Jennifer Granholm made the decision in the nation after Helling. Helling also cited the MDNRC report which claimed Wolverine had not "adequately demonstrated its inability to secure long-term power supply arrangements to meet its member needs."

The MDNRC staff said building the proposed plant "would increase electricity rates paid by average residential customers to 20.7 percent above those. The 50.2 percent rate increase would cost the average residential customer \$36.95 more each month," according to the figures from the MDNRC.

Wolverine has publicly disputed each of Helling's reasons for denying the permit. Wolverine has stated their demand for power is increasing, even as demand in higher industrial areas is falling. In response to the MDNRC report last fall saying the power plant was not needed, Wolverine said "The MDNRC staff report suggests no meaningful or superior alternatives for Wolverine to meet its obligation to its member-cooperatives in 2012 and beyond."

Instead of squandering the hopes of those looking for an economic shot in the arm, Granholm said in the nation after Helling.

There is outrage, anger, disappointment and harsh criticism for those involved in the decision that was announced Friday afternoon, particularly Gov. Jennifer Granholm.

The Department of Natural Resources and Environment (DNR), and the governor's office denied the permit application, which would have been the last major hurdle needed to get the project going and provide a much-needed economic shot in the arm for a region starved for new jobs of any kind.

"Obviously, I'm very disappointed in the governor's decision,"

G. Vinson Helling
Michigan Department of Natural Resources and Environment

Gov. Jennifer Granholm
Michigan

Numbers used are all wrong says Wolverine
by Richard Lamb
Advance Editor

As expected, Wolverine came out strongly disagreeing with the state's decision today to air quality permit. The governor characterized Wolverine's 600-megawatt (MW) coal-fired power plant proposed for the Caliste quarry as "an unnecessary plant for too expensive for Michigan ratepayers."

Wolverine management will now consider whether to challenge the decision in circuit court, as is its right. The board of directors will discuss the issue at a regular meeting scheduled for today.

The governor used figures on cost of the plant and how it would raise the rates of the member-owners, numbers Wolverine says are incorrect.

"We have estimated, with professionals, including the respected engineering firm of Burns and Roe who build power plants, that costs would come in at \$3.50 per kilowatt hour, not \$3.50 per kilowatt hour as the state has claimed."

WOLVERINE POWER COOPERATIVE

Many remain angered and disappointed
by Peter Juley
Managing Editor

The decision regarding denial of the air quality permit for Wolverine Power Cooperative's proposed power plant project isn't sitting well with local leaders, legislators and residents.

There is outrage, anger, disappointment and harsh criticism for those involved in the decision that was announced Friday afternoon, particularly Gov. Jennifer Granholm.

The Department of Natural Resources and Environment (DNR), and the governor's office denied the permit application, which would have been the last major hurdle needed to get the project going and provide a much-needed economic shot in the arm for a region starved for new jobs of any kind.

"Obviously, I'm very disappointed in the governor's decision,"

Rogers City's weekly newspaper, the *Presque Isle County Advance*, has covered the Wolverine Clean Energy Venture since the project was announced in May 2006. The paper's May 27 issue broke news of the air permit denial to community members. Visit piadvance.com to read coverage of this story.

Legislators Say State Made Wrong Decision

"With families across Michigan struggling, it is unreasonable to argue against bringing thousands of jobs to northeastern Michigan while simultaneously generating cleaner energy than before."

— U.S. Rep. Bart Stupak
(D-Menominee)

"The value of the Rogers City project to Michigan and the local region was immense, especially while the state is looking for job creation and setting a foundation to build on for the future... It is unfair for state leaders to not only withhold a help line for so long, but to then block any chance of a positive step being taken."

— State Sen. Kevin Elsenheimer
(R-Kewadin)

"This latest decision is another sad chapter in a pattern of neglect by the administration... The administration is leaving a painful legacy for our region of the state to grapple with for many years to come."

— State Sen. Jason Allen
(R-Alcona)

"I am beside myself that Governor Jennifer Granholm has turned away this opportunity to bring jobs to northeast Michigan. The governor has flown all the way to China to beg Chinese companies to bring jobs to Michigan when all she had to do was to drive up north to find the opportunity."

— State Rep. Andy Neumann
(D-Alpena)

STATE OF MICHIGAN

BEFORE THE MICHIGAN PUBLIC SERVICE COMMISSION

NOTICE OF HEARING FOR THE CUSTOMERS OF PRESQUE ISLE ELECTRIC & GAS CO-OP CASE NO. U-16334

- Presque Isle Electric & Gas Co-Op may reconcile its Energy Optimization plan costs for the period ended December 31, 2009, if the Michigan Public Service Commission approves its request.
- The information below describes how a person may participate in this case.
- You may call or write Presque Isle Electric & Gas Co-Op, 19831 M-68 Highway, P.O. Box 308, Onaway, Michigan 49765, (800) 423-6634 for a free copy of its application. Any person may review the application at the offices of Presque Isle Electric & Gas Co-op.
- The first public hearing in this matter will be held:

DATE/TIME: July 28, 2010, at 9:00 a.m. This hearing will be a prehearing conference to set future hearing dates and decide other procedural matters.

BEFORE: Administrative Law Judge Barbara A. Stump

LOCATION: Michigan Public Service Commission, 6545 Mercantile Way, Suite 7, Lansing, Michigan

PARTICIPATION: Any interested person may attend and participate. The hearing site is accessible, including handicapped parking. Persons needing any accommodation to participate should contact the Commission's Executive Secretary at (517) 241-6160 in advance to request mobility, visual, hearing or other assistance.

The Michigan Public Service Commission (Commission) will hold a public hearing to consider the April 30, 2010, application of Presque Isle Electric & Gas Co-Op (Presque Isle) for authority to reconcile its Energy Optimization plan expenditures and revenues for the period ended December 31, 2009, and other relief. On May 12, 2010, Presque Isle filed revised testimony and exhibits to 2009 Energy Optimization Reconciliation filings.

All documents filed in this case shall be submitted electronically through the Commission's E-Dockets website at: michigan.gov/mpscedockets. Requirements and instructions for filing can be found in the User Manual on the E-Dockets help page. Documents may also be submitted, in Word or PDF format, as an attachment to an email sent to: mpscedockets@michigan.gov. If you require assistance prior to e-filing, contact Commission staff at: (517) 241-6180 or by email at: mpscedockets@michigan.gov.

Any person wishing to intervene and become a party to the case shall electronically file a petition to intervene with this Commission by July 21, 2010. (Interested persons may elect to file using the traditional paper format.) The proof of service shall indicate service upon Presque Isle's attorney, Joseph J. Baumann, at Dykema Gossett PLLC, Capitol View, 201 Townsend Street, Suite 900, Lansing, Michigan 48933.

Any person wishing to make a statement of position without becoming a party to the case, may participate by filing an appearance. To file an appearance, the individual must attend the hearing and advise the presiding administrative law judge of his or her wish to make a statement of position. All information submitted to the Commission in this matter will become public information: available on the Michigan Public Service Commission's website, and subject to disclosure.

Requests for adjournment must be made pursuant to the Commission's Rules of Practice and Procedure R 460.17315 and R 460.17335. Requests for further information on adjournment should be directed to (517) 241-6060.

A copy of the Presque Isle's request may be reviewed on the Commission's website at: michigan.gov/mpscedockets, and at the office of Presque Isle Electric & Gas Co-Op, 19831 M-68 Highway, Onaway, MI. For more information on how to participate in a case, you may contact the Commission at the above address or by telephone at (517) 241-6180.

Jurisdiction is pursuant to 1909 PA 106, as amended, MCL 460.551 et seq.; 1919 PA 419, as amended, MCL 460.51 et seq.; 1939 PA 3, as amended, MCL 460.1 et seq.; 1969 PA 306, as amended, MCL 24.201 et seq.; 2008 PA 295, MCL 460.1001 et seq., and the Commission's Rules of Practice and Procedure, as amended, 1999 AC, R 460.17101 et seq.


June 4, 2010

BUSINESS OPPORTUNITIES

PIANOTUNING PAYS – Learn with American Tuning School home-study course. Tools included. 1-800-497-9793.

NEW BUSINESS – World's most efficient, fastest systems for restoring metal, rubber, flat roofs, hotels, factories, offices, schools, trailers. 573-489-9346.

FINANCIAL

HOMEOWNERS 62 OR OLDER – With an FHA government insured "Reverse Mortgage," can borrow against the equity in their home with no monthly payments. Call James Harry 231-972-8898. 

HEARTH & HOME

LOG SIDING, T&G PANELING – Cabin logs, mouldings, deck railings. D&D Products, 231-832-3100.

MISCELLANEOUS

BECOME AN ORDAINED MINISTER – Correspondence study. Founded in 1988. Free information. Ministers for Christ Outreach, 7549 West Cactus Rd. #104-207, Peoria, AZ 85381. www.ordination.org

FREE BOOKS/DVDs – Soon the "Mark of the Beast" will be enforced as church and state unite. Let the bible reveal. The Bible Says, POB 99, Lenoir City, TN 37771. 1-888-211-1715 thebiblesaystruth@yahoo.com

OUTDOORS

GARY'S STUMP GRINDING – Cheaper by the dozen. 1-800-870-3871 or 231-587-9296.

SAWMILL FOR SALE – \$4,995, new portable band saw, saws 36-inch x 16-foot log. 231-288-0066.

OUTDOOR WOOD BOILER – Kits and welded, from \$1,295. 231-288-0066.

REAL ESTATE

CABIN NEAR BALDWIN – And Pere Marquette River, 2-bedroom, living, kitchen, dining room, lake access, cable TV, storage shed. Near some of the best trout and salmon fishing. Will return calls. Negotiable. 231-592-4988.

UNIQUE COBBLESTONE HOUSE – Wooded 2½ acres, 3½ car garage, 2-story bunk house, fruit, nuts and grape vines. Fife Lake, MI area. 231-369-2637.

LAKEFRONT CABIN – Near Big Star Lake, Baldwin. 110 feet lake frontage, paved road, one mile to Pere Marquette River, 1.4 acres, garage, bunkhouse, perfect condition, \$99,000. 616-669-8424.

HOME FOR SALE – 2-bedroom, large pole barn, campground on 10 acres, state land on 2 sides, 8 miles off I-75, Grayling area, \$119,000. Call 606-687-2610 or 317-431-2022.

80 ACRES, ROCK, MI – 24 x 32 camp, prime hunting. 616-837-6453.

LAKEFRONT COTTAGE – On Campbell Lake, Hesperia, MI. Call 231-854-9505.

3.3 ACRES FOR SALE – In Lovells Township, 24 x 24 pole barn, also has electric. \$13,500. If interested call 734-485-1749.

BEST BUY, BAY MILLS, MI – 200 feet on Lake Superior, 3-bedrooms, 2-baths, nearly new mobile home, sandy beach, near trails, \$134,900. Let's talk. 231-897-4381.

NORTHERN MECOSTA COUNTY – Secluded homestead, hunting lodge, vacation home. 35 acres with 3-bedroom, 2-bath home and exceptional deer hunting. Additional 80 acres available. Privacy, wildlife, beautiful views, 2-car garage with new 20x36-foot woodshop, new woodshed, horse barn, pasture, creek, woods with log hunting cabin \$169,000. 231-468-1115.

2-for-1 Book Sale! Also order on countrylines.com/store



VIEW FROM THE TOP A collection of Jim Hough's columns from the past 10 years in *Michigan Country Lines*.



ON THEIR OWN POWER The only book to tell the Michigan electric co-op story, from their birth in the 1930s. Filled with first-hand testimonials and experiences of the people who blazed the trail for electric co-ops. Written by Ray Kuhl, former general manager of the Michigan Electric Cooperative Association.

Both books only \$6 Includes tax and shipping. **No substitutions.**

Great gift idea!

Book Order Form

Name (please print) _____

Address _____

City/State/Zip _____

Phone _____

NUMBER OF BOOK SETS: _____ X \$6 = _____

Credit card payment: _____ VISA _____ MasterCard

Account # _____

Name on Card _____

Exp. Date _____

Make checks payable and mail to: **MECA**

2859 W. Jolly Rd., Okemos, MI 48864

Reach over 250,000+ households!

Country Lines

Classified ad rates:

▲ \$3 per word (\$30 min.), including ALL business, agent and broker ads

▲ \$1.50 per word (\$15 min.) for co-op members running nonbusiness ads

Each initial, group of figures, phone number, abbreviation, e-mail address and website address counts as one word. Hyphenated and slashed words count as two or more words. Ads are subject to editor's approval and editing. For member rate, attach your mailing label. To pay by credit card, include card number, exp. date, address related to the card and signature with ad. M/C or VISA only, please indicate which. Send your printed or typed ad and check made payable to MECA (advance payment required) by 15th of month prior to publication to: *Country Lines*, 2859 W. Jolly Rd., Okemos, MI 48864, or email jhansen@countrylines.com. Call 517-351-6322, Ext. 201, for more information.

No classifieds accepted by telephone.

Also, place order online at

countrylines.com, and ads will be posted **FOR NO EXTRA CHARGE**

(Until the next issue of the magazine is published.)

49 ORGANIC ACRES – 3 miles west of Traverse City, MI. M-72 frontage, 2 roads, house, farm, buildings, appraised 2005, \$730,000, asking \$600,000. 517-663-5013.

BREVOORT LAKE – Upper Peninsula 3-bedroom, 1-bath cabin, stone fireplace, deck, storage shed, on 100 x 750-foot lot. Phone 906-293-8770.

NEWBERRY, MI. ONE ACRE – Connects to RV trails, lakes and rivers within 3 miles. House, 2-car garage, boat storage with 4 RV stalls, workshop, storage building. \$73,000. 231-536-9628 or 906-322-7255.

MUSKEGON COUNTY – 3-bedroom home, walkout basement with 90-foot frontage on a private lake, good fishing. Call 231-329-2857.

LAKE COUNTY, 5 ACRES – Bordering federal land. Great hunting with lake and river access, electric, and seclusion. Low down payment. John at North West Realty. 231-745-4646.

MASON COUNTY – 80 wooded acres bordering federal land with over 1,000 ft. on Cranberry Lake. What an opportunity, \$195,000. More adjacent acreage available. Pere Marquette River, prime river frontage including frontage on Beaver Lake, also borders federal land. What a buy, \$89,900. Zero down, land

contract terms, hunting acreage available. Call John for more information. More listings at cbnwr.com. North West Realty, LLC, 231-745-4646.

VACATIONS

3-BEDROOM, BREVORT – Lakefront vacation home. 20 minutes north of the bridge. lindafarquhar@cox.net 316-721-3420 lakefrontvacationrental.com

MARTINY WATERFRONT COTTAGES – Completely furnished, air and boats included. Pontoon rental available. 616-897-5062.

PETOSKEY, 5-BEDROOM, 3-BATH – Sleeps 10. Only 3 miles from downtown and bay, 7 miles to Boyne Highlands, and 30 miles to Mackinac Bridge, weekly and weekend rental. 231-348-3169.

3-BEDROOM, U.P. MI – Brevort Lake lakefront. 15 minutes north of Mackinac Bridge, trophy fishing. Kwhite49760@aol.com 239-222-7772. Vacationhomerentals.com

WANTED

BUYING OLD WOODEN DUCK – Goose, fish, decoys. 248-877-0210.

BUYING GUN RELOADING EQUIPMENT – Bullets, ammo, gun parts, old stock and more. 517-623-0416.

WALK-IN BATH BLOWOUT

Mention this ad for \$100 off expires on 7/31/10



Up to 55% off retail price
Free water testing of tubs
Hundreds IN STOCK
Family owned & operated

LUTER'S SUPPLY

1-800-264-4902
www.LuterSupply.com



First on the Market,
Best in the Field.



- All stainless steel construction
- No smoke, ashes or wood trash in your home
- 12 hour burn
- 10 to 100 feet from your home
- Heats home and household hot water
- 25-year warranty
- Connects to your existing central duct or hydronic system
- Units from 120,000 to 250,000 BTU's
- Financing Available
- Dealer Inquiries Welcome

Hardy Manufacturing
Company, Inc.
Philadelphia, MS 39350
1-800-542-7395

www.hardyheater.com * S&S@hardyheater.com

FUTURE STEEL BUILDINGS
Do-It-Yourself Steel Buildings

Ideal For:

- Recreational Use
- Boat Storage
- Bunkie
- Equipment Storage
- Garage/Shop
- PWC/Snowmobile

- 30-year perforation warranty
- Full technical support from start to finish
- Fully customized to meet your needs
- Factory-direct savings

Call Toll Free Today for a **FREE!** INFORMATION PACKAGE

Our building consultants are ready to take your call **1-800-668-5111** Ask for ext. 91

Handicap Tub Access

Our walk-thru opening converts your tub into a shower. Be safe with our slip-resistant bottom and grab bars. Very affordable!! ****REPAIRS****

Great Lakes Fiberglass
glflc@yahoo.com • 989-614-6344



Owen Heng of Midland has over 100 nutcrackers in his collection.

What Members Collect

Walt Rusin of Muskegon collects old wooden and bakelite telephones from the '20s, '30s, '40s and '50s.



Do you collect something *unusual*? We'd like to hear about it! Please send your name, address/phone, and a color photo (not from a computer printer) of your collection to Editor, *Michigan Country Lines*, 2859 W. Jolly Rd., Okemos, MI 48864, or by email to czuker@countrylines.com.

GORILLA TOUGH ON A ROLL.

For The Toughest Jobs On Planet Earth®

GORILLA TOUGH

1-800-966-3458 Made in U.S.A.



Walking Alpena

Resurgent Alpena proudly displays its unique physical and cultural charms. **Rhonda Dedyne**

You can add the word “walkable” to the water, woods and wildlife that are part of Alpena’s attraction.

The town’s assorted walkways and bike trails are an excellent way to see all that Mother Nature provides for more than 11,000 residents of this northeastern Michigan community and the thousands of guests who visit each year.

“The Alpena Bi-Path and other walkways that connect downtown and other parts of the city definitely help attract visitors here, and it’s also a plus for our residents,” says Jackie Krawczak, Chamber of Commerce director. The city’s walkability also helped it earn a recent designation as a “Community for a Lifetime” by the Michigan Office of Services to the Aging. “There’s really nowhere you can’t get to by bike or on foot,” she adds.

Water, Water Everywhere

Beautiful blue water edges the 16-mile Bi-Path as it passes through the city’s parks and beach areas on Lake Huron and the Thunder Bay River. Visitors have a great view of Lake Huron at Bay View Park, where part of the walking path runs along the breakwall. The park, with its performing arts stage, play and picnic areas and basketball and tennis courts, is a favorite spot for both residents and tourists. Fun in the water is the focus at other city parks such as Mich-E-Ke-Wis, Starlite Beach, Blair Street, and Thomson.

A walk on the Maritime Heritage Trail is

a “must do” for any visitor. Also part of the Bi-Path, the Trail winds along the Thunder Bay River, starting in the downtown area and ending at South Riverfront Park. It includes interpretive signs with information on the importance of Lake Huron and the river in the community’s maritime heritage. A pedestrian bridge located behind the Great Lakes Maritime Heritage Center is a recent Trail addition that was funded in part by “Cool Cities” grants that Alpena received several years ago.

Other popular walkable areas are Duck Park and Island Park, which are part of the city’s 600-acre wildlife sanctuary located on the corner of U.S.-23 and Long Rapids Road. Island Park features nature trails and fishing platforms, while Duck Park has both fishing and a picnic area, and is a nationally-known viewing area for many varieties of birds.

“It’s pretty unusual to have a wildlife sanctuary right in the middle of a city, and have it so readily accessible for visitors,” Krawczak explains. “Bird-watchers come from all over to see all the different species.”

Over 200 Shipwrecks

Alpena and Thunder Bay are also well-known for something less peaceful than bird watching. Over 200 shipwrecks have been identified in the water that’s part of the 448 square-mile Thunder Bay National Marine Sanctuary. The first of its kind in the Great Lakes, the sanctuary was established to pro-

tect the collection of shipwrecks.

“Lots of divers are attracted to Alpena because of the shipwrecks,” Krawczak says, noting that some are even visible from the surface of the water. “I’ve taken my kayak out and seen some—that’s pretty amazing.”

If diving or kayaking isn’t your thing, at the Great Lakes Maritime Heritage Center you can view shipwrecks without being on the water. The 20,000-square-foot building includes live video feeds from divers at shipwreck sites and many interactive exhibits and displays. You can even feel what it’s like to be on the roiling waters of Lake Huron when you board a replica of a ship that sank in Thunder Bay.

There’s no admission fee to the Center, which is open year-round, and has special events and activities during the Thunder Bay Maritime Festival that is part of Alpena’s annual Fourth of July celebration (<http://thunderbay.noaa.gov>).

Lighthouse Lovers

Whether they sank or travelled safely on Lake Huron’s waters, every ship’s captain focused on the rays of hope that came from light signals. Lighthouses in and around Alpena include the Alpena Light that can be viewed from the transient docks at Alpena City Harbor; Middle Island, where you can even stay overnight; Thunder Bay Island, one of the oldest light stations on Lake Huron; and two of the most famous stations on Michi-

gan's "Sunrise Side"—the "old" and "new" Presque Isle lighthouses. Located about 20 miles north of Alpena, the Old Presque Isle Lighthouse was built in 1840. The "new" station dates to 1870, and at 113 feet, it's the tallest lighthouse on Lake Huron.

If you love lighthouses, but your time in Alpena is limited, visit the Huron Lights Gift Shop and Museum, located at U.S.-23 and Long Lake Road. Owners Jerry and Barbara Roach have photographed and written about hundreds of lighthouses, with photos and books for sale beside a wide variety of Michigan-made products.

"We enjoy working with local artisans and displaying their items," Jerry says about the hand-crafted wares, including stained glass, metal art, woodworking, and log furniture. "People are always surprised when they stop here and see everything—it's not just about lighthouses, although we certainly enjoy our connection with the Middle Island Lighthouse Association and its museum here, too." Check out Huron Lights on Facebook or call the shop at 989-595-3600.

Alpena also hosts the Great Lakes Lighthouse Festival (Oct. 7-10; 586-566-1603 or lighthousefestival.org), but from Saginaw to Mackinaw, lighthouses will be open for tours and visits.

Downtown: Art and A Ghost

Beautiful sights and fun things to do aren't limited to the outdoors. Alpena offers many shopping and eating choices if you are in town for a day trip, weekend events, or a longer vacation outing.

One of the most well-known restaurants in the historic downtown district is the John A. Lau Saloon. The food is great and the brew tasty—just ask Agnes, a ghost of the saloon's original owner who makes occasional appearances.

"It's a fun place to go, and the legend about Agnes makes eating there even more

interesting," Krawczak says about the restaurant, where John A. Lau first served hungry lumberjacks back when the timber industry reigned in Alpena.

The current owners, John and Connie Van Schoick, have kept that history alive through renovations following their purchase of the business in 1987. See old and new photos—and learn about Agnes—at johnalausaloos.com

A short walk away is the Center Building, another of Alpena's many vintage structures that have been lovingly renovated for 21st-century lifestyles. Retail shops such as The Fresh Palate, featuring gourmet breakfast and lunch; and The Forget Me Not Shoppe, with scrapbooking offerings, fill the first floor.

Alpena's cultural heritage is on full display on the third floor, home to the Art in the Loft Gallery of the Northeast Michigan Center for Fine Arts. Nearly 200 artists keep the spacious gallery filled with works from all genres.

"In addition to all

the various art pieces that are available for sale, our artists conduct workshops and demonstrations throughout the year," says Karen Bennett, a board member for the nonprofit association. "We like to call this part of the downtown area our 'creative district'—close to our theatres, shops and cafes that are all nearby."

For details on Art in the Loft and the Passport to the Arts Program that includes special events at many venues around Alpena, visit artintheloft.org or artownmichigan.org.

Other summer happenings include the Michigan Brown Trout Festival (July 17-25); Art on the Bay (July 17-18); Wings Over Alpena Air Show (Aug. 21). More details and lodging options are available through the Alpena Convention and Visitors Bureau at alpenacvb.com or 800-425-7362.



Photos - Rhonda Deelyne

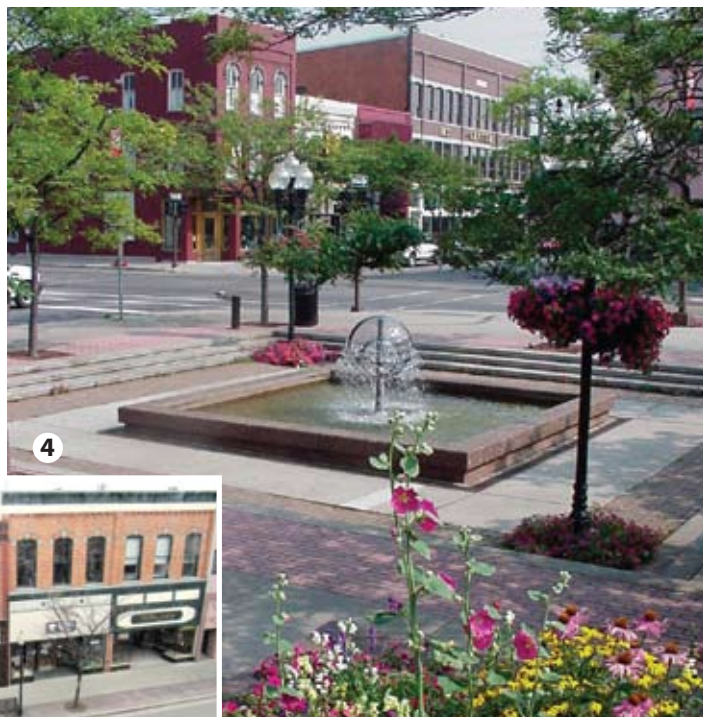


Photo - Rhonda Deelyne

Photo - City of Alpena/Chamber of Commerce

1) Shipwreck history comes alive at the Great Lakes Maritime Heritage Center.

2) Views of Lake Huron to the east—and the pretty city of Alpena on the west—greet walkers on a section of the Alpena Bi-Path that runs along the breakwall near Bay View Park.

3) Lighthouse lovers will want to see the Middle Island Lighthouse Association's museum, and nearby Huron Lights Gift Shop.

4) Culligan Square, and shops in downtown Alpena. The town has many vintage buildings that have been renovated.

When Brian Burns, CEO of Presque Isle Electric & Gas Co-op, recently suggested we might want to do a feature on a woman who lives in his hometown of Indian River and who is running a marathon to raise money for a day care center in Mexico, I balked. I mean, if we run a story on one run-for-a-cause, it could look like an endorsement and open the floodgates to hundreds of requests to publicize other runs for money. Of course, it turns out Dorothy Johnson is not just another runner. She has a compelling life story, and she's written it all down. I read it and it made me tired. Seriously, she needs to put it all in a book.

You've probably noticed there are a lot of people running in Michigan these days. And I don't mean politicians running for everything from sheriff to governor. (There's even a sheriff running for governor.) I'm talking about the fit-and-trim grandmothers, school track teams and just-out-of-rehab heart bypassers who are lacing up running shoes and hitting pavement and trail to run—or walk—in hundreds of 5K, 10K, half-marathon and full-marathon races this summer and fall.

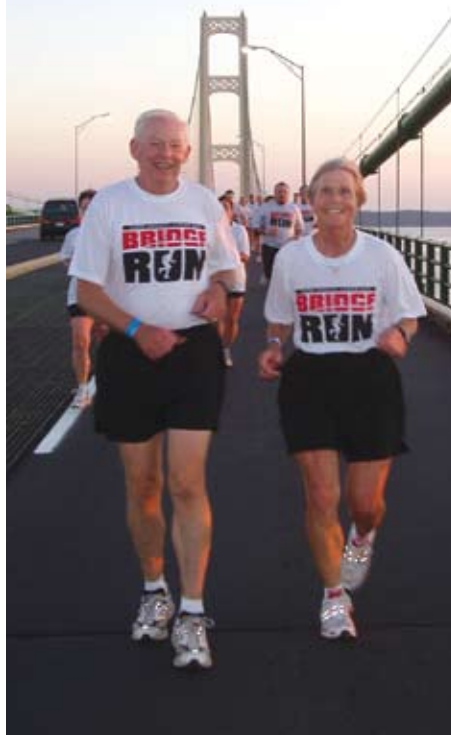
Let's be honest, most of us who participate in these races aren't in them to win. We're in them to get a little exercise, certainly, but mostly we run on weekends to join friends, get a t-shirt and a snack, and help out a cause we believe in.

Sometimes, it's personal. Cherryland Electric Co-op CEO Tony Anderson has pledged to run a marathon in every state to raise money for Big Brothers, Big Sisters of Northwest Michigan because he wants to give back for all the help he got as a kid after his father died. (marathon4kids.com)

Charity runs have become a big deal. The top 30 "thon" fundraising programs generated more than \$1.62 billion in gross revenue for charity in the U.S. last year, according to the Run Walk Ride Fundraising Council, which keeps track of such things. The big winners are Relay for Life (American Cancer Society), \$405 million; Race for the Cure (Susan G. Komen for the Cure), \$120.3 million; March for Babies (March of Dimes), \$100 million; Start! Heart Walk (American Heart Association), \$100 million; and Team in Training (Leukemia & Lymphoma Society), \$98.9 million.

If you're interested in participating and contributing, you'll find 430 big and small run/walk events through the rest of this

Love to Run



John and Dorothy Johnson ran across the Mackinac Bridge on Labor Day.

year on runmichigan.com.

I've run and walked through a few 5K races, and I probably should push myself to actually 'run' longer and more often, but, like many of us, I haven't yet experienced the runner's high that devoted runners say feeds their desire to keep running.

No doubt Dorothy Johnson has experienced that high. She's had fast feet since 1986, when, at 41, she ran the 10-mile Crim race in Flint, where she continues to run every year, and where she and her first husband, Jim, were teachers. (Jim French died in 1997; they'd been married 31 years.)

She must be in constant motion. Even before she started running, she was a "serious" biker in the '70s and '80s, riding in extended events in Michigan and elsewhere. She recorded her longest bike day trip in 1987: 176 miles for the "One Day

Ride Across Michigan." In 1995, she biked 100 miles each day for three consecutive days with her sister, Barbara.

But her love now is running, for both the health and fun of it. "I do race to win, but I don't," she says. "It's really a social thing for me."

She retired in 2004, married John and moved to their vacation home on Burt Lake. She runs with her friends in the Indian River Striders club, which she started in 1999 so she would have someone to walk and run with in her future retirement community. She runs an average of 30 miles a week and walks 12.

She's completed 25 marathons since her first, the Flying Pig in Cincinnati, in 1999. She ran the Boston Marathon for the first time this year and counts the Great Wall of China Marathon as her most interesting. (She's traveled all over the world.) Over the last few years, she's run 1,400 miles annually and 'briskly' walked 600 miles more.

She will be running in this fall's Chicago Marathon—in her first charity run—to raise money for a daycare center in San Miguel de Allende, Mexico, where she and her husband have volunteered for four years through the Cross in the Woods Shrine, their parish in Indian River. (marathon.casadelosangeles.org)

The center provides a healthy, safe place for children of low-income, single, working parents. It operates solely on volunteers and donations, Dorothy says. "Not a penny is wasted, and it helps a lot of people."

Given Michigan's problems, maybe the politicians should team up with Dorothy. They could put together a charity run for the state. We could make a dent in the deficit and all lose a few pounds to boot. I think she could pull it off. She may not win all her races, but she finishes what she starts. She was a teacher, after all.

"If they can do it, so can I," she said in the beginning, always the motivator.

"If I can do it, so can they," she says now.



Mike Buda is the founding editor of Country Lines and continues to work on the magazine, as well as other activities of the Michigan Electric Cooperative Association. He's going to run more.

Email Mike at mbuda@countrylines.com.



Not all treasure is buried.
Sometimes it's right in front of us.

We can find it where the sand plays tag with the shore.
Where the stones skip the farthest.

Where fun is always the first one up
and the last one to go to bed.

Where 3,288 miles of golden shoreline
says dig into the treasure that's Pure Michigan.

PURE *M*ICHIGAN®
Your trip begins at michigan.org



Try the
Energy Depot
online home
energy audit



A Helping Hand on Energy Costs

Little houses don't use much energy, but family-size houses do. They have a lot of lightbulbs, many windows, and all kinds of places that simply leak energy. Your electric co-op has Energy Optimization programs that will help you **use electricity more efficiently**, and will even **pay you** to make the switch to more efficient products.

At michigan-energy.com you'll find an online package of programs called **Energy Depot® for Homes**, where you can perform your own **home energy audit**, calculate your energy costs, and learn how to reduce energy use by **hundreds of dollars a year**. Plus, you'll qualify for a **free energy improvement kit** that will help you immediately reduce your energy use.

Or, call us on how we can assist you with your home audit at **800-423-6634**.

