

MICHIGAN Country Lines



Our First Snow Trail

5 PSCR Increase Expected

**8 Capital Credit Refunds
Coming Soon!**

28 Rate Restructuring Planned

dish
NETWORK®
AUTHORIZED RETAILER

regular price ~~\$39.99~~

\$24.99
a month
for 12 months

over 120 channels *locals included!*
(where available)

HD FREE
for life!
(with agreement)

FOR A **LIMITED TIME** RECEIVE:

FREE

HBO & SHOWTIME

18 channels for 3 mo.
(with agreement)

FREE



2 Room HD-DVR Upgrade
(\$1/mo. DVR service fee applies)

FREE



Activation
(\$99 Value)

FREE



Up to 6 Room
Installation

CALL TODAY

1.877.466.5258

WWW.INFINITYDISH.COM

WE ARE OPEN 7 DAYS A WEEK 8 AM - MIDNIGHT EST • SUNDAY 9 AM - MIDNIGHT EST
OFFER ONLY GOOD TO NEW DISH SUBSCRIBERS • SE HABLA ESPAÑOL



\$25 Visa® gift card
with activation (certain conditions apply)
Respond by: 12/15/2010

Scan this
QR Barcode
with your phone
and learn more
about our promos!



Get FREE barcode scanning software at: www.i-nigma.mobi

Digital Home Advantage plan requires 36-month agreement and credit qualification. If service is terminated before the end of agreement, a cancellation fee of \$150/month remaining applies. Programming credits apply during first 12 months. Free HD to 4th of current account requires Agreement, Activation with Payment, Billing, HBO/Showtime offer requires Activation with Payment, Billing, credits apply during first 3 months (\$7 value), customer must downgrade or then-current price applies. Requires continuous enrollment in Activation and Payment Billing, live Standard Professional installation only. All equipment is leased and must be returned to Dish Network upon cancellation or unreturned equipment fees apply. Limit 5 leased boxes per account. Lease upgrade fees apply for select receivers, monthly fees may apply based on type and number of receivers. HD programming requires 10 television 10 channel availability will vary based on package. 200 HD channels require subscription to additional packages and 199 HD receiver. All prices, packages and programming subject to change without notice. Local channels may not be available in all areas. Offer is subject to the terms of applicable Promotional and Standard Customer Agreements. Additional restrictions may apply. First-time Dish Network customers only. Offer ends 12/15/2010 and related channels and service marks are the property of Home Box Office, Inc. SHOWTIME and related marks are registered trademarks of Showtime Networks Inc. a CBS Company. \$25 Visa® gift card requires activation and \$2.95 shipping and handling fee. You will receive a claim voucher within 3-4 weeks and the voucher must be retained within 30 days. Your Visa® gift card will arrive in approximately 5-6 weeks. InfinityDISH charges a one-time \$49.95 non-refundable processing fee. Indiana LTD. Reg. No. 15. 10-1026.

Editor
Gail Knudtson

Assistant Editor
Doug Snitgen

Design Editor
Cindy Zuker

Ad/Recipe Assistant
Jennifer Hansen

Publisher
Michael Peters

Editor Emeritus
Mike Buda



Michigan Country Lines, USPS-591-710, is published monthly, except August and December, with periodicals postage paid at Okemos, MI, and additional offices. It is the official publication of the Michigan Electric Cooperative Association, 2859 W. Jolly Rd., Okemos, MI 48864.

Subscriptions are authorized for members of Alger Delta, Cheryland, Cloverland, Great Lakes, HomeWorks Tri-County, Midwest Energy, Ontonagon, Presque Isle, and Thumb electric cooperatives by their boards of directors. Subscriptions are \$6 per year.

Postmaster: send address changes to Country Lines, 2859 W. Jolly Rd., Okemos, MI 48864.

Letters to the editor should be sent to the same address. Phone 517-351-6322. Email: knudtson@countrylines.com.

Association officers are **Brian Burns**, PIE&G, chairman; **Ken Swope**, Midwest Energy, 1st vice chairman; **Tony Anderson**, Cheryland, 2nd vice chairman; **Eric Baker**, Wolverine Power, secretary-treasurer; and **Steve Boeckman**, Great Lakes Energy, past chairman. **Michael Peters** is president and CEO.

Unsolicited letters, photos and manuscripts are welcome. *Country Lines*, however, will not be responsible for their safe keeping or return.

The appearance of advertising does not constitute an endorsement of the products or services advertised.

Display ad representatives:

Michigan-Al Mateus
877-649-5620

National Country Market
512-441-5200

Change of Address: Please notify your electric cooperative. See page 4 for contact information.

10 An Emphasis on Efficiency

Energy efficiency remains key to how electric co-ops will keep electricity affordable.
Megan McKoy-Noe

12 Our First Snow Trail

The Muncie Lake Pathway was the first designated State Forest trail for hiking and skiing. *Don Ingle*

14 Slaying Energy Vampires

Several devices inside your home may be consuming electricity even when they are switched off. *Brian Sloboda*

C O L U M N S

- 9 **Comment** *Michael Peters*
Efficiency means more when it's your dime
- 16 **Our Kids** *Linda Wacyk*
Help for 'shut-down' learners
- 21 **Gardening** *Neil Moran*
A gardener's wish list
- 22 **House & Home** *James Dullea*
Humidifiers cool air, energy bill
- 24 **Going the Distance*** *Kris Wetherbee*
Long distance learning is popular
- 30 **Ramblings** *Mike Buda*
Thanks & Giving

*Not in all editions

Pages specific to your electric utility are: 1, 4-5, 8, 25, 28-29, 32

C O V E R *

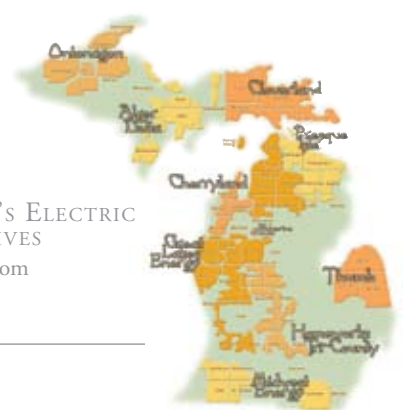
Cross-country skiing around Traverse City.
Photo—Traverse City Convention & Visitors Bureau

D E P A R T M E N T S

- 6 **Readers' Pages**
Deer season, LED lighting, letters,
- 18 **Home Cooking**
All-time *Country Lines* favorites
- 24 **Wolverine Power***
Wolverine joins small nuclear reactor development
- 26 **Country Lines Marketplace**
Classifieds from readers



MICHIGAN'S ELECTRIC
COOPERATIVES
countrylines.com



Board of Directors

Robert Thurow *Chairman*
819 W. Chauvez Rd., Scottville, MI 49454
231-757-3430

Mark Carson *Vice-Chairman*
01950 Anderson Rd., Boyne City, MI 49712
231-582-0688

Susan Scott *Secretary*
10653 15 Mile Rd., Evart, MI 49631
231-250-4017

Edwin Estelle *Treasurer*
8317 Alba Rd., Elmira, MI 49730
989-732-7424

Paul Byl *Director*
9941 W. Buchanan Rd., Shelby, MI 49455
231-861-5911

Dale Farrier *Director*
4400 U.S. 131 N.E., Kalkaska, MI 49646
231-258-4454

Robert Kran *Director*
7380 N. Tuttle Rd., Free Soil, MI 49411
231-464-5889

Larry Monshor *Director*
1541 Thumm Road, Gaylord, MI 49735
989-705-1778

Richard Walsworth *Director*
3701 N. 48th Ave., Mears, MI 49436
231-873-2418

President/CEO: Steve Boeckman
888-485-2537

**Communications
Director/Editor: Dave Guzniczak**
231-487-1316

Boyne City Headquarters:
1323 Boyne Ave.
Boyne City, MI 49712
Hours: 8 a.m.–5 p.m. M–F
Phone: 888-485-2537

To report an outage, call:
1-800-678-0411

What's In My Electric Bill?

The electric bill you receive every month is basically payment for the comfort and conveniences that electricity provided for you the previous month. Okay, but what actually makes up the costs on your bill? Let's take a closer look.

First, not everyone's bill is the same. At Great Lakes Energy, similar to other electric utilities, the main rate classes include residential, seasonal, small commercial; and large power. Your rate class designation is based on the intended type of usage and other factors. We have different rates to meet the differing needs of our members. Every few years, we also perform a cost-of-service study to review all our rates. Based on the most current method of analyzing rates, the study helps us determine whether each class is paying their fair share for the electricity received.

Energy Usage Charge

The energy usage or cost-per-kilowatt-hour (kWh) charge covers the variable cost of service related to purchasing energy from our power supplier. On Aug. 31, the rates were increased to 9.981 cents/kWh for permanent residents and 16.659 cents/kWh for nonpermanent (seasonal) residents. The increase will provide more revenue to help fund more reliability improvements and help us maintain adequate margins.

Monthly or Quarterly Charge

The monthly charge for permanent residents and quarterly charge for seasonal residents are the same; \$12 per month or \$36 per quarter. The charge is intended to cover maintenance, poles, wires, billing, member services, tree trimming and other fixed costs involved in the normal operation of an electric cooperative regardless of the amount of energy each member uses.

Effective Jan. 1, 2011, they will increase to \$15 monthly or \$45 quarterly with a corresponding decrease in the energy usage charges. The new energy usage charges will be 9.59 cents/kWh for permanent residents and

15.066 cents/kWh for seasonal residents.

The energy usage charge currently covers part of our fixed costs, too, because the monthly/quarterly charge is not large enough to offset them. This results in higher energy users paying a greater share of the fixed costs than lower energy users. For all residential users to pay their fair share of these costs, the monthly charge would need to be about \$30.

Historically, the monthly/quarterly charge has been kept low and the energy usage charge has made up the difference. Many utilities are moving away from this model because it no longer fits with the economic and environmental realities we face. Embedding more and more costs in the energy usage charge—especially when we are encouraging conservation and efficiency—will not produce the revenue needed to run the co-op.

Other services, including phone, cable, internet and satellite TV, have fixed costs, too. They are also covered by a fixed monthly charge, typically around \$40 per month. As we move ahead, the trend will be toward a monthly/quarterly charge and an energy usage charge that more closely reflect the actual costs they are intended to cover.

Energy Optimization Surcharge

The Energy Optimization (EO) surcharge covers the cost of EO programs mandated by the 2008 state energy law. The Michigan Public Service Commission (MPSC) estimates that members who participate in these programs will save enough energy to offset the surcharge cost on their bills.

Power Supply Cost Recovery

Because power generation and transmission costs frequently fluctuate in relationship to changing demand, our energy usage charge is not always able to keep up with these changes. The Power Supply Cost Recovery (PSCR) factor allows us to pass on to our members any increases or decreases incurred

Continued above ⇨



Steve Boeckman
Great Lakes Energy
President/CEO

My Electric Bill, *continued*

from our power supplier in the cost of purchased power, fuel to generate electricity, and transmission services. All regulated electric utilities in Michigan have a PSCR factor on their electric bills.

Effective Jan. 1, 2011, the PSCR factor is expected to increase from 0.981 to 1.144 cents/kWh subject to MPSC approval (see related legal notice on pg. 29).

I hope this gives you a better understanding of your billing charges and their role in providing the revenue needed to cover the costs of providing you with the service and value you expect.

Please feel free to contact our member service representatives with any billing questions you may have!

Call 888-485-2537.

PSCR Increase Expected

Effective Jan. 1, 2011, the PSCR factor on your bill is expected to increase from 0.981 to 1.144 cents per kilowatt-hour (kWh).

The proposed factor must be approved by the Michigan Public Service Commission before it can take effect (see related legal notice on pg. 29).

Great Lakes Energy buys its electricity from a power supplier whose changes in costs require use of the Power Supply Cost Recovery (PSCR) factor on your bill.

The factor allows the power supplier to pass on to Great Lakes Energy any increases or decreases in the cost of purchased power, fuel to generate electricity, and transmission services. All regulated electric utilities in Michigan have a PSCR factor on their electric bills.

Great Lakes Energy does not retain any PSCR revenue since that money is passed through to its power supplier.

Power supply costs can frequently fluctuate

in relationship to changes in energy markets and are changes that Great Lakes Energy cannot control.

The change in the factor amounts to \$1.22 more per month for the typical residential Great Lakes Energy member who uses an average of 750 kWh per month.

Changes in power supply costs can also lower the PSCR factor, as was the case in July 2009.

Receive *Country Lines* While You're Away

Simply contact us if you plan to be away for more than a month and give us the address where you would like the magazine sent. Contact us again when you return. Dial 888-485-2537 or see the member services section at gtlakes.com, under "Your Home," and click on "Change of Address Request."

Thank You!

Energy Optimization programs are closed for 2010 due to overwhelming participation by Great Lakes Energy members. Thank you for helping us meet our energy savings goals. Programs will re-open in January 2011. Watch for details coming soon.

You must be a co-op member with a home or business in Michigan to participate in Energy Optimization programs. For a complete list of participating utilities, visit www.michigan-energy.org.

www.michigan-energy.org
877.296.4319



Learn about our programs at michigan-energy.org • Questions? 877.296.4319

Deer Season Alerts: Disease & Safe Driving

Michigan is among the top states in the nation in almost every hunting category, with more than 800,000 licensed hunters who contribute \$2 billion annually to our economy.

But Michigan State University (MSU) wildlife outreach specialist, Jordan Burroughs, says hunters, wildlife enthusiasts, and even drivers need to remember a few safety tips during deer season.

The Michigan Department of Natural Resources and Environment (DNRE) confirmed a diagnosis of epizootic hemorrhagic disease (EHD)—an often fatal viral disease found in cud-chewing animals such as wild deer and elk—in three Michigan counties last month.

There is no known effective treatment or control for EHD. Symptoms of the disease include sudden onset, loss of appetite, fear of humans, progressive weakness, excessive salivation, rapid pulse and respiration, and unconsciousness.

While there is no evidence



that humans can get EHD, property owners and hunters who discover deer they suspect died of this should report it to the nearest DNRE office. Baiting and feeding deer is prohibited in the entire Lower Peninsula.

A helpful 48-page booklet called “Michigan Venison: How to Field Dress, Butcher, Prepare, Cook and Preserve,” is available through MSU Extension by visiting bookstore.msue.msu.edu. The cost is \$2.25, and it includes 15 venison recipes.

Driver Safety

There are about 60,000 vehicle/deer crashes in Michigan every year, with the largest percentage occurring in the fall.

Knowing how to react to deer that appear on or next to the road is critical to driver safety. Statistics from the Michigan Deer Crash Coalition show that in most of these crashes, deaths and injuries occur when drivers veer from their lane, hitting another vehicle or a fixed object. The number one rule is: *Don't veer for deer.*

“The best thing to do if you see a deer while driving is to slow down,” Burroughs explains. If a crash is unavoidable, remember the following:

- Don't swerve
- Brake firmly
- Hold onto the wheel
- Stay in your lane
- Bring your vehicle to a controlled stop.

Deer season runs from now until Jan. 1, depending on where you are hunting and the type of deer, and what firearm you use. Visit michigan.gov/hunting or call your local DNRE office for season-specific and license rules, or for more information on EHD.

For information on safe driving during deer season, visit michigandeercrash.org.

MYSTERY PHOTO

Everyone who identifies the correct location of the photo below by **Dec. 10** will be entered in a drawing for a **\$50 coupon redeemable for electricity from your electric cooperative.**

Call in your entry to *Country Lines* at 517-351-6322, ext. 306, email jhansen@countrylines.com, or mail it to *Country Lines*, 2859 W. Jolly Road, Okemos, 48864. Include your name, address, phone number and co-op. The winner will be announced in the January 2011 issue.

The **September** contest winner is **Annette Nettleton, of Sault Ste. Marie**, who correctly identified the footbridge over the AuSable River in Grayling.



Sept. photo



Do you know where this is? ►



Light up holiday savings with LEDs

Decorating with lights this holiday season? Consider light-emitting diodes (LEDs). They cost more initially but last twice as long as traditional lights, and you'll recover the difference in three to four years.

- **Efficient.** LEDs use between 1 kWh and 3 kWh of energy, compared to between 12 kWh and 105 kWh for traditional lights, saving \$11 every holiday season.
- **Durable.** LEDs last about 4,000 hours. They're also made of plastic and less likely to break.
- **Don't want to use LEDs?** Consider trimming back the number of hours your traditional lights are on to six hours or less each day.

Sources: Consumer Reports, Alliance to Save Energy



More On Wind Power

I have read several articles on wind power, such as the one penned by Mr. Bob Gibson ("Wind and Basic Math," Sept.), in the *Michigan Country Lines* that we receive. They all allude to having a home wind turbine connected to an electric grid, such as Great Lakes Energy, Consumers Energy, etc. Are there codes or laws that prohibit someone from having a wind turbine just for their own use and not connected to the local power company? I am more interested in that, as opposed to the complicated method of hooking to a power grid.

I have no desire to sell power, just make power for my own use. I'm well aware that the wind does not always blow enough to produce enough power to sustain all appliances, however, where I am located, I do believe that it would be sufficient. Nevertheless, I would like information on that type of wind turbine. It would be beneficial if you might publish another article on the subject, addressing the home wind turbine for personal use only.

Thank you. I enjoy your magazine very much.

— Bonnie Kenzie, Jackson

While there are no rules prohibiting the installation and use of a wind turbine for homes, there are state electrical



code requirements for wiring the system and if your house is hooked up to the utility, there must be a switch device installed to prevent the back-feeding of electricity from the turbine onto the utility's system.

The installation and hookup would have to be approved by your local electrical code inspector. This is a critical safety requirement to protect lineworkers and others as they work on the utility's distribution system.

We also strongly recommend using a licensed electrical contractor that specializes in the installation of home-sized wind turbines.

As for where to find an appropriately-sized wind turbine or contractors that install such systems, the best source of information is through the website sponsored by the Michigan departments of Environmental Quality and Energy, and Labor and Economic Growth, found at michigan.gov/dleg/0,1607,7-154-25676--,00.html.

— Mike Peters

Sam (Letters, Sam Simonetta, Oct.) does not say what the cost of the 126-foot turbine was for him. He also said that

he has to use available electric power to heat his water heater. My question would be, 'What does he use when there is no wind?' Also, 'What does he use to heat his house in the winter? Does he know that wind turbines only contribute 1 to 2 percent of the electric power in the U.S.?'

Maybe Sam needs to come up with an alternate power other than wind or solar in Michigan. If everyone in Michigan had wind turbines and the need for fossil fuel plants closed down and we lost the wind power, where would we be?

Maybe Sam doesn't understand that fossil fuel and nuclear power plants take days to start up—there is no switch that the power plant can turn on to produce power immediately.

Wind or solar power are not the answer in Michigan. What we need is cleaner use of fossil fuels and nuclear power that have safe and reliable performance.

— John Bounker, Interlochen

Car Wars Response

In response to "Car Wars" (Letters, Mike Obrigewitsch, Sept.): I live in Michigan, home of the "Big Three."

When the domestic car companies are doing well, Michigan does well. Why support some southern state or foreign country? My

Chevy Traverse was built in Lansing. Support Michigan, not some southern state or foreign country. There are a lot of good-paying jobs in the automobile industry. Let's keep them here in Michigan.

— R. Luther, Caro

Send Us Your Favorite Recipes:

SAUSAGE:

by Dec. 10

BUDGET-FRIENDLY:

by Jan. 10

CHEESE:

by Feb. 10

Mail to: Recipe Editor, *Country Lines*, 2859 W. Jolly Road, Okemos, MI 48864, or email jhansen@countrylines.com

Recycled Paper

Michigan Country Lines is now printed on recycled paper from FutureMark Paper, which taps the "urban forest" of waste paper thrown out in Chicago every day. Using recycled paper reduces the carbon emitted in paper production, the paper deposited in landfills, and water and air pollution. The energy to produce recycled paper is about one-half the amount required to make paper from pulp.

Statement of Ownership, Management and Circulation (required by U.S.C. 3685)

1. Publication Title: Michigan Country Lines. 2. Publication No.: 591-710. 3. Filing date: 10/1/10. 4. Issue frequency: monthly, except August and December. 5. No. of issues published annually: 10. Annual subscription price: \$6. Complete mailing address of known office of publication: Michigan Electric Cooperative Association, 2859 W. Jolly Rd., Okemos, MI 48864. 8. Complete mailing address of headquarters or general business office of publisher: 2859 W. Jolly Rd., Okemos, MI 48864. 9. Full names and complete mailing address of publisher, editor, and assistant editor: Michael Peters, Gail A. Knudtson, Douglas Snitgen, 2859 W. Jolly Rd., Okemos, MI 48864. 10. Owner: Michigan Electric Cooperative Assoc., 2859 W. Jolly Rd., Okemos, MI 48864. 11. Known bondholders, mortgagees, and other security holders owning or holding 1 percent or more of total amount of bonds, mortgages, or other securities: None. 12. Tax status: Has not been changed. 14. Issue date for circulation data below: Oct. 2010. 15. Extent and nature of circulation:

	Avg # of copies each issue during preceding 12 mo.	Actual # of copies of single issues pub. nearest to filing date
A) Total No. of copies	229,733	185,140
B) 1) Paid and requested circulation	226,786	182,606
C) Total paid and requested circulation	226,786	182,606
D) 1) Free distribution by mail	637	659
4) Free distribution outside mail	2,310	1,875
E) Total free distribution	2,947	2,534
F) Total distribution	229,733	185,140
G) Copies not distributed	0	0
H) Total	229,733	185,140
I) Percent paid and/or requested circ.	98.7%	98.6%
16. Publication of statement of ownership:	November 2010	
17. Signature and title of editor:	Gail Knudtson	

Capital Credit Refunds Coming Soon

As a member of a healthy electric co-op, you earn regular returns on your investment.

Many Great Lakes Energy members will pay less for electricity next month because of a capital credit refund that will appear on the bill.

A financially-healthy electric cooperative rewards its member-owners by sharing its profits with them through a capital credit “retirement” program. Great Lakes Energy will again apply capital credit refunds to many of its members’ electric bills in December.

Refund amounts will be based on electricity purchases made by Great Lakes Energy members during 2009 and 1985. Members who purchased more electricity in these years will receive larger refunds. For example, an \$6.23 refund will be issued to the average residential-use member whose electricity purchases totaled approximately

Most members will see their refund applied to their December bill, while some seasonal members will see it applied to their January 2011 bill.



\$1,066 in 2009. The refund will be more if the member also purchased electricity from the co-op in 1985.

This is the eighth consecutive year that Great Lakes Energy has returned part of its profits to its members. In September 2010, the cooperative’s board of directors approved a total capital credit retirement package of over \$3.58 million. A portion of the total, which

equals nearly \$864,000, is 2009 capital credit earnings and the remainder is from 1985.

Members with refunds over \$1,000 will receive a check.

“Our capital credit refund program is a prime example of the unique value that a consumer-owned electric company brings to its members,” says President/CEO Steve Boeckman.

The co-op plans to continue issuing capital credit refunds each year provided financial conditions allow it. Future refunds would include electricity purchases made by members during other years, as well.

Former co-op members entitled to a refund will receive a check.

Since 2003, Great Lakes Energy has issued more than \$21.3 million in capital credit refunds to its members.

Capital Credits Questions?

Here are some typical questions we receive about capital credits.

Q: What are capital credits?

A: Capital credits are a key reason why you’re more than just a customer. You’re a *member* of Great Lakes Energy! They represent your share of profits, called “margins” in the co-op world, that are generated when revenues received from our members exceed our operating costs. Since we are a cooperative, we do not keep these margins, but rather allocate them back to the members who provide revenue through the electric rates they paid during the year. Unlike investor-owned utilities, cooperatives do not have shareholder investors/owners. Our members are our investors/owners. Every time you pay your bill, you’re making an investment in a business you co-own.

Q: Why is the refund on my bill smaller than my neighbor’s?

A: Your share of the profits is based on the amount of electricity you purchased from your co-op during certain years. If

your neighbors purchased more electricity in these years than you, they will receive a larger refund.

Q: Why are the refunds based on the years 2009 and 1985?

A: We want to make sure that both newer and long-term members benefit from this program and receive their entitled amounts.

You can help us, too. If you took over the electric account from a relative who is now deceased, we will provide you with instructions on how to claim any future capital credit refunds that may be issued in the deceased person’s name. Anyone who plans to move off our lines should provide us with their new address for our records. Your assistance will help limit the amount of unclaimed capital credit refunds.

Q: What about profits earned in other years? Will they be returned, too?

A: Yes, we plan to continue retiring capital credits annually, provided financial condi-

tions allow us to do so. Including the current retirement, all capital credits earned by members prior to 1986 have been returned.

Q: What happens to the capital credits that you haven’t returned yet?

A: They remain part of the capital invested in the cooperative so we can continue to build and improve our power line distribution system and provide the other services that you expect from your electric cooperative.

Q: Can I expect a refund next year?

A: It is too early to predict how well your co-op fared financially in 2010. However, based on our past history, we expect to continue this program next year.

We have been retiring capital credits annually since 2003. In that time, over \$21.3 million in capital credit refunds have been returned to our members.

Most importantly, we have remained financially strong despite the poor economy, skyrocketing energy prices and other issues that challenge all electric utilities.

Energy Efficiency Means More When It's Your Dime!

Kelley, my 22-year-old daughter, moved to Washington, D.C., after graduating from Michigan State University this past May. The fact that she left Michigan to find a job is another issue, so my current topic of discussion with her is energy efficiency (and how all the “preaching” in the world can’t take the place of having to pay your first utility bill).

When it’s your money, you look at how it’s spent much differently than when it’s OPM—other people’s money—and in this case, mom and dad’s. I remember having a discussion with her about taxes and FICA after she got her first real paycheck in high school. She asked, “Who is FICA and why did they get money out of my paycheck?”

Kelley has an apartment in a former brownstone house that was divided into three separate apartments. The gas bill is split equally between the apartments, but the electric is billed separately, based on actual usage. After a few months, she finally got her first electric bill, for about \$200. WOW! Her surprise over that bill and how much electricity costs in Washington, D.C. (about 15 cents per kilowatt-hour), led to a discussion about energy efficiency and how much it costs to run appliances, keep the lights on, or run the air conditioner.

For instance, she now understands that leaving a 60-watt lightbulb on for 12 hours a day costs her about \$3 per month. I asked her questions such as, “How many

lights do you have in your apartment? How many do you leave on over an extended period of time? Switch off the light when you leave the room or go to bed and you can cut usage in half. Switch those lights to a CFL and the same amount of light costs you only about \$1 monthly, per bulb.

I can’t imagine living in D.C. without air conditioning, and neither can Kelley. But the cost to run a medium-sized window air conditioner is about \$100 per month if you leave it on 24 hours per day. Maybe coming home to a cool apartment is not as important as the money you can save if you turn it off or turn the thermostat up significantly. Then, when you get home, turn it to a reasonable setting to cool off the apartment and you can cut the bill about \$60 per month.

I also asked her, “Do you leave the computer on 24 hours per day?” If so, that costs about \$15 per month. If you turn it on only when you need it, you would probably cut your bill by \$10 per month. “Do you have an entertainment center?” You probably leave it plugged in 24/7, like most people.

Well, my daughter was surprised to learn that many appliances still use energy



Michael Peters is president and CEO of the Michigan Electric Cooperative Association. His email address is mpeters@countrylines.com.

even when they are turned off. A study reported in *Science Daily* found that the average home has about 20 appliances that use electricity even when they are turned “off.” Off may not really mean “off” when it comes to electricity use. The answer is Smart power strips (see story, p. 14), which shut off the power to the appliance completely when it senses a drop in demand and then turns it on when demand increases (when you turn the appliance on). This can save you quite a bit, depending on what you

plug into the Smart Strip.

We talked about a few other options, such as using a fan more often instead of the air conditioner, checking the cost of a smaller, newer refrigerator, getting rid of the plasma TV and getting a smaller LCD model, etc. I think she was actually listening, unlike when she lived at home and I reminded her to turn off a light or the TV when she left the room, or to shut the door to the garage.

Yep, there is no education better than experience. Now that she can “experience” an electric bill each month, I’m guessing she will better remember my “ranting” at her when she lived at home. I can’t wait to talk with her this winter about her gas bill.



Our Energy, Our Future
A Dialogue With America
OurEnergy.coop



An Emphasis on Efficiency

Co-ops are putting their expertise to work in fashioning innovative programs that will help members get the most out of every kilowatt.

– Magen Howard

You're probably familiar with the concept of energy efficiency—doing more with less electricity. Some even call efficiency the “fifth fuel”—behind coal, nuclear, natural gas and renewables—to show its importance in the mix of technologies that produce power for our nation.

Energy efficiency benefits both electric co-ops and their consumers. When members use less energy, they help keep their individual electric bills affordable and reduce the overall demand for power. That, in turn, delays the need for co-ops to build new generating plants and saves everyone money.

Due to various efficiency measures, per capita energy consumption by electric co-op members has grown less than 1 percent annually since 1978, despite an explosion in computers and other home electronics. Before that date, average residential electricity use by co-op consumers increased by about 7 percent each year, according to information from the federal Rural Utilities Service and the National Rural Utilities Cooperative Finance Corporation, a supplemental lender to electric co-ops.

A key piece in this trend has been the introduction of national energy efficiency standards for appliances. In the early 1970s, the amount of energy a refrigerator, for example, used depended on its design and the amount of built-in insulation. Due to ever-higher energy efficiency standards since then, the typical fridge today consumes 75 percent less electricity than in 1975—even though the average unit size has grown from 18 cubic feet to 22 cubic feet, according to the U.S. Department of Energy (DOE).

“Appliances consume a huge amount of electricity, so they provide enormous potential to both save energy and take pressure off consumers’ pocketbooks every month,” explains DOE Secretary Steven Chu.

The Energy Star® program has also played a role in raising the bar for energy-efficient appliances and electronics. Launched in 1992 by DOE and the U.S. Environmental Protection Agency, Energy Star-rated products in over 60 categories deliver the same or better performance as comparable models while using less energy and saving money.

Helping You Save

Electric co-ops have long been in the business of energy efficiency—it’s a natural extension of their business model.

“Unlike investor-owned utilities, not-for-

profit, consumer-owned electric co-ops aren't structurally motivated to sell more kilowatt-hours," observes John Holt, senior manager of generation and fuels for the National Rural Electric Cooperative Association (NRECA), the Arlington, VA-based service organization of more than 900 electric co-ops across the U.S. "Co-ops, to deliver a safe and reliable supply of electricity at an affordable price, strive to maximize use of existing resources and infrastructure."

He adds: "Efficiency can help co-ops temporarily head off the need for constructing new generation. The biggest payoff comes from consumers switching to more energy-efficient geothermal heat pumps, lighting and appliances, combined with improved power plant efficiencies and expansion of load management programs that reduce electricity purchases during times of peak demand when power costs skyrocket."

According to NRECA surveys, 93 percent of co-ops conduct energy efficiency educational efforts such as holding public meetings and seminars; publishing reams of information in statewide consumer publications, local newsletters, bill stuffers and websites; broadcasting radio and TV ads; and even launching a sweeping promotional campaign, "TogetherWeSave.com."

Almost 80 percent of co-ops offer residential energy audits and 66 percent offer commercial and industrial audits, as well. Depending on a home's age and upkeep, savings from acting on an audit's recommendations can be significant. Brian Sloboda, senior program advisor for NRECA's Cooperative Research Network, predicts that most co-op members will see bills at least 5 percent to 10 percent lower—"amounts that far outpace anything spent."

To encourage consumers to implement efficiency steps, about one-half of all co-ops provide financial incentives—such as low- or no-interest loans for upgrades, leases on efficiency-related equipment, or ownership/maintenance of standby generators to reduce power use when consumption spikes. More than 40 percent offer efficiency and weatherization services, including selling and installing high-efficiency lighting systems, electric water heaters, geothermal and air-source heat pumps, insulation and Energy Star appliances, while roughly 50 percent include interactive energy use calculators on their websites.

Most co-ops are taking advantage of recent technology advancements, too: upgrading

power lines, replacing older transformers, using advanced equipment to control voltage fluctuations, and deploying advanced metering devices. Others are encouraging consumers to change out traditional incandescent lightbulbs with energy-efficient compact fluorescent lamps (CFLs).

"Co-ops are doing everything they can to keep consumers' electric bills as low as possible, and energy efficiency is a big help,"

**"Energy efficiency
remains key to how
electric co-ops will keep
electricity affordable in
the face of rising prices."**

Holt remarks. "You continue to use the same products at your home, but at a lower cost. The lights are on, the air conditioner is running, but they're more efficient, so you use less electricity."

And co-op members are answering the call. A recent NRECA study showed a majority taking low-cost or no-cost energy-saving steps like turning off lights when they leave a room, turning their thermostat up in summer and down in winter, replacing incandescent bulbs with CFLs or light-emitting diodes, adding weatherstripping around doors and windows, and only running the dishwasher or washing machine with a full load.

Looking to the Future

According to the DOE, if every American household replaced one incandescent bulb with a CFL, our nation would save enough electricity to light 3 million homes and save over \$600 million a year.

And that's just lightbulbs. The Palo Alto, CA-based Electric Power Research Institute (EPRI), an independent, nonprofit research and development group that counts electric co-ops as members, sees massive potential for savings if energy efficiency initiatives are enacted nationwide.

"The achievable potential at the low end—what we call realistic—is 236 billion kilowatt-hours saved by 2030, roughly five times the present electricity consumption of the New York City metro area [annually]," states Omar

Siddiqui, EPRI program manager for energy efficiency. "At the high end is a reduction of 382 billion kilowatt-hours by 2030."

Efficiency's greatest impact will likely come from advances in commercial lighting, commercial office equipment—particularly information technology components like servers and data centers—and home electronics.

"Large screen televisions, game consoles, laptops to cell phones—where there isn't a strong efficiency standard now in place—opens up opportunities for efficient versions that result in significant savings," Siddiqui points out.

To uncover your own opportunities to save energy and money, call your electric co-op or visit their website. You can also visit togetherwesave.com, sponsored by Touchstone Energy® Cooperatives, the national branding program of electric co-ops, and discover small ways to keep your electric bills affordable.

"Energy efficiency remains key to how electric co-ops will keep electricity affordable in the face of rising prices," says NRECA CEO Glenn English. "Co-ops are putting their expertise to work in fashioning innovative programs that will help members get the most out of every kilowatt."

Sources: Cooperative Research Network, NRECA Market Research Services, Electric Power Research Institute, U.S. Department of Energy, Rural Utilities Service, National Rural Utilities Cooperative Finance Corporation.

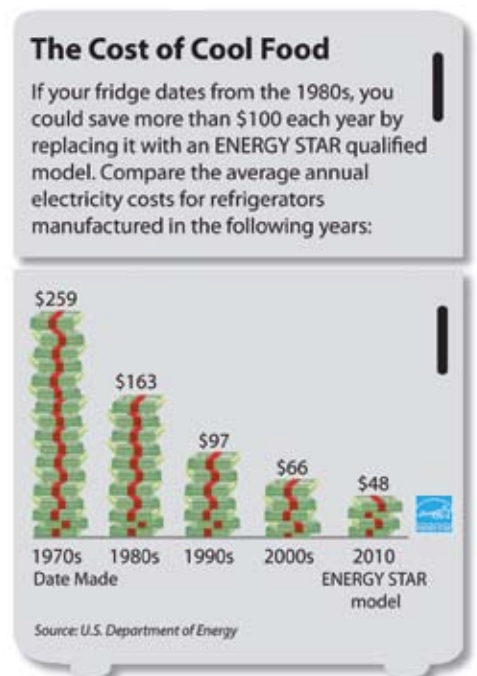




Photo courtesy of Boyne

Our First Snow Trail

Muncie Lake State Forest Pathway was our state's first designated 'quiet area' for hiking and skiing. **Don Ingle**

The marching orders came from the Department of Natural Resources (DNR, now Department of Natural Resources and Environment) Forestry Division headquarters back in the '70s: "Lay-out and build a trail, to be called a 'pathway,' for hikers, skiers or snowshoers' use."

Forester Dan Bonner was a good "soldier" and followed those orders. In charge of the State Forest unit around the Traverse City area, he set out to develop such a trail on state forest land in the Boardman River Valley. It became the first "pathway" in a soon-to-grow system of non-motorized state forest trails in the northern two-thirds of Michigan.

Bonner, who passed away many years ago, admitted at the time that the concept of a cross-country ski trail was a bit new for him—he was not a skier. But with guidance from the Forestry Division landscape architect and a recreation specialist in the Lansing

office, he was able to locate and lay-out the first—and perhaps most-actively used—of all the State Forest pathways.

Bonner's task was to find an area where trail users could enjoy a scenic, natural area away from the noise of highways. He explored his forest area and found a place that surpassed the architect's guidelines, in an area within the Boardman River watershed. The site connected with one of many small lakes, and was named the Muncie Lake Pathway. It became one of the most popular Nordic ski trails and just as popular with warm-season hikers.

Additionally, the area's forests drape the heights overlooking the Boardman River. The cluster of small lakes are also popular with winter ice anglers, and varied wildlife wintering here offer birding and photography opportunities.

This Pathway has since been linked with the National North Country Trail, a federal

recreation trail that runs from New York to North Dakota.

Last winter, at a meeting of the Michigan Outdoor Writers Association at Ranch Rudolf near Traverse City, several members had a chance to explore the Muncie Lake Pathway on skis. The cold, clear-blue-sky day also brought out a number of local area skiers from the Traverse City Hiking Club for a day on "skinny skis."

In past years, the DNRE Forestry Division has funded ski trail grooming, however, funding cuts and a reduction in staff time brought an end to that. Local skiers we talked to on the trail say the Pathway is now being groomed by the hiking club.

There are now many state forest pathways in the northern Lower and Upper Peninsulas. Three decades of use have proven that Bonner's keen eye for fitting the trail to the landscape in a way that brings the skier or hiker into close contact with the forest's scenic beauty was right on target.

It was that same ability to "fit the use with the need" that brought him another challenge—to set up trails, primitive camping areas, and overall recreation opportunities in the area that has become known as the Sand Lakes Quiet Area, a six-square-mile enclave of forest and lakes. Opened to provide another foot-travel adventure for hiking and primitive backpacking, the area's "quiet" designation was threatened when an oil and gas well-pumping station was opened within the area's boundaries.

The pumping units were loud when running, and recreationists were quick to protest the noise within the designated "quiet" area. But Bonner managed to solve the conflict by getting the pumping unit operators to install a series of baffles that muffled the sound so it could not be heard over most of the area unless someone was up-close.

With his efforts to provide places for the recreationist, hiker, skier and those who seek "peace and quiet," Bonner established Michigan's first-ever forest pathway.

Give a tip of the cap when your skis hit the snow on the Muncie Lake Pathway this winter in memory of Dan Bonner, truly a pioneer of the Michigan State Forest pathways system.

Maps of Muncie Lake Pathway and Sand Lakes Quiet Area are available from the DNRE office at 970 Emerson, Traverse City, MI 49684.

The state's Pure Michigan website, michigan.org, lists 324 cross-country ski trails. Or, speak to a knowledgeable Michigan Travel Counselor at 888-784-7328, M-F, 9 a.m. – 5 p.m.



We've been waiting all year for this.

For the cool weather to come.
For the leaves to fall from the Aspens.
For the flurry of wings and the rush that follows.

The gear is packed. The dog is pacing by the back door.

Eight million acres of public land and one of the best hunting states
in the country are just waiting on us.

Our favorite season is now open in Pure Michigan.

PURE MICHIGAN®
Your trip begins at michigan.org

Slaying Energy Vampires with Smart Strips

As children, most of us were told to turn off the TV when no one was in the room to keep from wasting energy. But with today's TVs, turning off the set doesn't save as much energy as you think. "Off" doesn't really mean off anymore.

Several devices found inside your home are commonly referred to as "parasitic loads," "phantom loads," or "energy vampires"—consuming electricity even when switched off. Phantom loads can be found in almost every room, but a favorite "coffin" is your entertainment center.

Most TVs today slowly sip electricity while waiting patiently for someone to press the "on" button. They also use energy to remember channel lineups, language preferences, and the time. Cable or satellite boxes, VCRs, DVD players and DVRs also use energy when we think they're turned off.

Studies show that in an average home, 5 percent to 8 percent of electricity consumption stems from phantom loads.

To put that in perspective, the average North American household consumes roughly 10,800 kilowatt-hours (kWh) of electricity per year. If you estimate that 6.5 percent of your total electricity consumption comes from phantom loads, the amount drained by these vampires equals about 700 kWh annually—or \$70 every year.

So, how can you tell which devices are okay to leave plugged in and which need to have a wooden stake driven through their hearts?

Identify Plug Parasites

Microwave ovens and alarm clocks, which use relatively small amounts of standby power, are acceptable to leave plugged in. A digital video recorder (DVR) uses a fairly significant amount of power when turned off, but if you record programs frequently you will want to leave it plugged in.

You don't have to worry about unplugging items with mechanical on/off switches, such as lamps, hair dryers, or small kitchen appliances like toasters or mixers—they don't draw

any power when turned off.

How do you slay other energy vampires? Try plugging household electronics like personal computers, monitors, printers, speakers, stereos, DVD and video game players, and cell phone chargers into power strips. Not only do power strips protect sensitive electronic components from power surges, you can quickly turn off several items at once. (Routers and modems also can be plugged into power strips, although they take longer to reactivate.)

Smart Strips Equal Easy Savings

Power strips, however, are often hidden behind entertainment centers or under desks and forgotten. A better solution may be found in "smart strips."

Most smart strips feature three outlet colors, each with a unique task. The blue outlet serves as a control plug, and is ideal for a heavily used device like a TV or computer. Anything plugged into red outlets stays on—electricity to these receptacles never cuts off—making them perfect for satellite boxes or other appliances that need constant power.

The remaining outlets, generally neutral or green in color, are sensitive to current flowing through the blue outlet, so turning off the TV or computer cuts power to them as well. Some smart power strips can be made even smarter with timers or occupancy sensors that determine when to cut power to various devices.

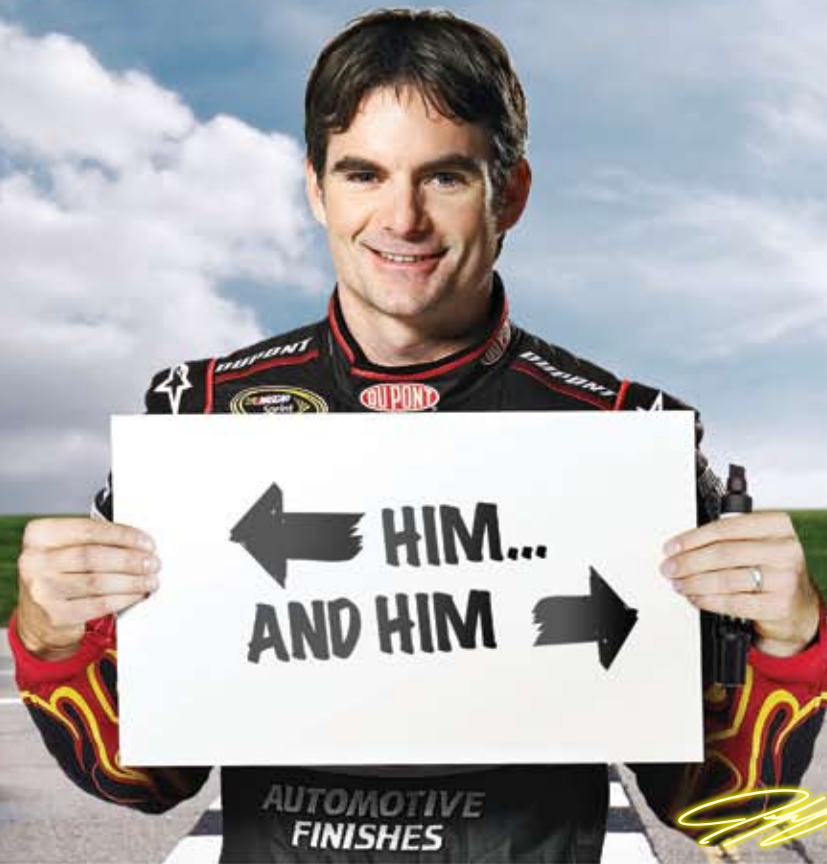
Smart strips are available online or at specialty electronic retailers and generally cost \$20 or more depending on their size. Payback generally can be achieved in under one year, depending on the type of equipment the strips control and how often they are used.

Maybe our parents asked us to turn the TV off because vampires, phantoms and parasites haunted their electric bills. These days, smart strips can chase these load monsters away from your home—and your pocketbook.

Brian Sloboda is a program manager specializing in energy efficiency for the Cooperative Research Network, a service of the Arlington, VA-based National Rural Electric Cooperative Association.



Power strips are an easy way to turn power off to several items without unplugging devices one by one.



A WATERFURNACE GEOTHERMAL UNIT IS LIKE TAKING TWO CARS OFF THE ROAD

(Sorry, you can't pick *which* two...)

Jeff Gordon's office is a bit more extreme than most. It's hot. It's loud. You don't want to know what he spends on gas. So when Jeff gets home, he wants to be **comfortable without spending a fortune on fuel**. That's why when it was time to decide how to condition his house, **Jeff chose a WaterFurnace geothermal heat pump**. A WaterFurnace geothermal system uses the **clean, renewable energy stored in your backyard to save up to 70% on heating, cooling and hot water**. It's the environmental equivalent to **planting an acre of trees or taking two cars off the road**. It's good for the environment, it's great for your budget and thanks to a **30% federal tax credit**, now is the best time to act. Visit waterfurnace.com for more information and to find a local dealer.

YOUR LOCAL WATERFURNACE DEALERS

Bad Axe

B & D Heating
(989) 269-5280

Berrien Springs

WaterFurnace Michiana
(269) 473-5667

Big Rapids

Stratz Heating & Cooling
(231) 796-3717

Caro

All-Temp Heating
(989) 673-5557

Charlevoix

Ballard's and Great Lakes
Plumbing & Heating
(231) 547-1035

Cheboygan

Jim's Handyman
(231) 627-7533

Carsonville

Certified Temperature Innovations
(810) 300-7748

DeWitt

S & J Htg & Clg
(517) 669-3705

Gaylord

Family Htg & Clg
(989) 732-8099

Grand Rapids

Montgomery Htg & Clg
(616) 459-0261

Hart

Adams Htg & Clg
(231) 873-2665

Harbor Springs

Ballard's and Great Lakes
Plumbing & Heating
(231) 526-6859

Ionia

Home Experts
(800) 457-4554

Lapeer

Porter & Heckman
(810) 664-8576

Michigan Center

Comfort 1 Heating /
Lenawee Heating
(517) 764-1500

Mount Pleasant

Walton's Htg & Clg
(989) 772-4822

Muskegon

Geofurnace Htg & Clg
(800) 922-3045

Petoskey

Ballard's and Great Lakes
Plumbing & Heating
(231) 347-3900

Palms

Lakeshore Improvements
(989) 864-3833

Traverse City

Geofurnace Htg & Clg
(231) 943-1000

D&W Mechanical

(231) 941-1215

Webberville

Applegate Home Comfort
(800) 377-2272

Zeeland

Mast Heating
(616) 772-2252



waterfurnace.com | (800) GEO-SAVE

Help for 'Shut-down' Learners

Comon, admit it. There's just something about the sight of a big yellow bus that conjures up an air of anticipation. No matter how old I get, it's hard to forget the first-days-of-school feelings, when friendships renewed, milestones were passed, and anything seemed possible in a new year of learning.

Except, for some children—and their parents—the light of expectancy has dimmed. They hope, but they've been disappointed many times over. Something hasn't connected for these kids, and they are becoming increasingly discouraged about learning even the basic skills of reading and writing. Eventually, they shut down, refusing to crack a book and sending the entire household into an escalating frenzy of tension and frustration.

School psychologist Richard Selznick, Ph.D., calls these kids "shut-down learners," and has evidence that as many as 40 percent of all American children experience such problems. Unfortunately, Dr. Selznick says, the educational system is often at odds with the shut-down learner's style, which requires more hands-on learning than is common in most schools.

"If you have a shut-down learner you are in for a really tough time unless you identify and address your child's special learning needs," says Selznick, whose book *"The Shut-Down Learner: Helping Your Academically Discouraged Child"* offers parents techniques they can use to help their children succeed in school and life.

"Shut-down learners are oftentimes incredibly talented and misunderstood. Their self-esteem is so beaten down and their sense of shame and defectiveness runs so deep that they cannot overcome these emotions."

If this scenario fits a child you love, Selznick offers the following tips, just in time for a new school year.

Plan for Quiet Time: Establish regular times when the TV is off and everyone commits to reduce the amount of electronic interruptions. Agree there will be no texting, instant messaging or video game playing (even if the child has no



person outside of school with whom you feel comfortable, to assess your child.

"The start of the school year gives you a chance to start over and approach the year with a spirit of renewal," says Selznick, who sees plenty of reasons for families to hope. He has seen shut-down learners go on to become high-

level business executives, engineers, artists, surgeons, and more.

"There are shut-down learners who make it to the other side and are enjoying very productive, satisfying lives."

homework). Encourage children to work around the dining room table rather than scattered around the house.

Serve as Consultant: One parent should remain available as a "consultant," doing quiet work at or near the table, too, helping to set the tone.

Turn Down the Heat: Answer questions as they arise, and avoid yelling or pecking at your child about their homework. Tone down your reactions to homework situations. Stay calm as most consultants would, and help with problem-solving.

Adopt a Matter-of-Fact Posture: Adopt more of this type of posture in your interactions around homework. Try: "I know you wanted to go to the mall tomorrow night, but until I see some effort on your part, I'm not so willing to go." Try not to be so invested in the results. Seek natural consequences for the child.

Keep Perspective: Homework and school battles can really debilitate a family. Find ways of keeping a sense of balance. For example, set aside regular game nights and plan for fun times (even if homework is not done). Let the child choose the activity. Try not to let school problems set the tone for the entire household and all of your interactions.

Trust Your Gut: If you believe your child is experiencing difficulties at school, listen to yourself. Don't wait, or accept such oft-used statements as, "You know how boys are," or "She'll grow out of it." Act on your feelings by checking out your concerns. If the school is denying any services, perhaps consult a competent

Is Your Child a "Shut-down Learner"?

Richard Selznick, Ph.D., author of *"The Shut-Down Learner: Helping Your Academically Discouraged Child,"* urges parents to watch for these signs:

- A sense that the child is increasingly disconnected, discouraged and unmotivated (shut down)
- Fundamental skill weaknesses with reading, writing, and spelling, leading to lowered self-esteem
- Increased avoidance of school tasks, such as homework
- Dislike of reading
- Hatred of writing
- Little to no gratification from school
- Increasing anger toward school

Selznick says shut-down learner style becomes increasingly apparent in the upper elementary grades. But parents can learn to recognize these early warning signs, as early as kindergarten:

- ▲ Difficulty with learning letters
- ▲ Trouble playing rhyming games
- ▲ Difficulty following directions
- ▲ Resistance to early reading activities and instruction

CHRISTMAS DELIVERY GUARANTEED!
1-866-768-6571 • www.bradfordexchange.com/10204

OUR FOREVER *Love* DIAMOND RING

**HAND-SET WITH A DOZEN
 GENUINE DIAMONDS**

**PERSONALIZED FREE—
 YOUR NAMES TOGETHER FOREVER**

HAND-CRAFTED IN SOLID STERLING SILVER

Let the Beauty of Your Love Surround You

They say that love makes the world go 'round. Now comes a dazzling expression of forever love created just for the two of you in a unique new jewelry creation—the *Our Forever Love Diamond Ring*.

*Exquisite Craftsmanship...
 Exclusive Design...*

This contemporary "spinning" ring is hand-crafted of solid sterling silver and features diamond pavé borders that go all around the ring—a dozen sparkling diamonds in all! The center band of the ring is elegantly engraved with the two names of your choice on both the front and the back. AND it spins, revealing the names as you turn the ring. Plus the interior band features delicate cutout hearts—another symbol of your forever love.

An Exceptional Value... for a Limited Time

Stylish and romantic, this striking ring is an outstanding value at \$129*, payable in 4 easy installments of \$32.25. The ring is available in whole and half sizes from 5-12 and is backed by our 120-day guarantee. This is a *limited time offer* so don't miss out! To reserve your ring, send no money now; just mail the Reservation Application today!



*A Personalized Design Exclusive
 from The Bradford Exchange*

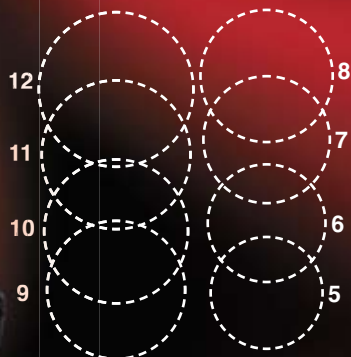


**CENTER BAND SPINS
 TO REVEAL NAMES**

www.bradfordexchange.com/10204



*Arrives in a custom
 presentation case along with
 a Certificate of Authenticity*



To find your size, using the guide, place one of your rings on the chart and match a circle with the inside of your ring. Whole & half sizes 5-12 are available. If your ring size falls between two circles, order the half size in between.

LIMITED-TIME OFFER



We must receive your initial payment by 12/17/10 to guarantee Christmas delivery. Call 1-866-768-6517 or visit www.bradfordexchange.com/10204.

*Plus \$8.98 shipping and service. Sales subject to product availability and order acceptance.

RESERVATION APPLICATION SEND NO MONEY NOW

**THE BRADFORD EXCHANGE
 JEWELRY**

P. O. Box 806 · Morton Grove, IL 60053-0806

YES. Please reserve my ring with the names indicated.

Ring Size _____ Maximum of 8 characters each

Name #1

Name #2

Mrs. Mr. Ms. _____
Name (Please Print Clearly)

Address _____

City _____ State _____ Zip _____

E-mail (optional) _____



All-time Favorites

The recipe section in *Country Lines* has always been our readers' favorite part of the magazine. And, why not? After all, they're your neighbors' recipes, shared as if you were all at a giant neighborhood potluck supper. Over the past 30 years, readers have sent us an estimated 10,000 of their favorite recipes. We published the best of those in the magazine or on our website, countrylines.com/recipes. This month, we're sharing some of our favorite recipes from all those we've published. Share and enjoy.

Swedish Meatballs

- 1 lb. ground beef
- 1/4 lb. ground pork
- 1 1/2 c. bread crumbs
- 1 c. milk
- 2 eggs
- 1 med. onion, finely chopped
- 1 1/2 t. salt
- 1/4 t. allspice
- 1/8 t. nutmeg
- 1/8 t. cardamom
- 1/8 t. pepper
- 1 10-oz. can beef or chicken broth
- 1/2 c. cream or sour cream
- 3/4 t. dill weed
- 3 T. butter or light olive oil

Mix all ingredients together except broth, cream, dill weed and butter. Shape into small balls and brown in butter or olive oil. Add broth, cream and dill weed. Cover and steam for 1 hour.

*Elisabeth Anderson, Gernfask
"Recipes for All Seasons" Cookbook 1984*

Aunt June's French Onion Soup

- 6-8 c. thinly sliced onions
- 1/4 c. butter or margarine
- 4-5 10 1/2-oz. cans condensed beef broth
- 1 soup can of water
- 2-3 t. Worcestershire Sauce
- 1/8 t. pepper
- sliced Mozzarella cheese
- French bread or croutons



In a large pot, melt butter; add onions and cook until tender, about 20 minutes. Transfer all pan contents to a crock-pot. Add broth, water, Worcestershire sauce and pepper. Cover and cook on low for 4-6 hours. Place a piece of toasted French bread or croutons in the bottom of each bowl. Add soup and top with grated mozzarella cheese.

For stove top method: Cook onions in butter in a heavy stockpot. Add broth, water and seasonings. Bring to a boil and let simmer 30-45 minutes. Serve with bread or croutons and cheese.

Janice Kessler, Sault Ste. Marie, Sept. '04

Spinach Berry Salad

- 1 bag fresh baby spinach (Pictured at left)
- 1 c. sliced strawberries
- 1 c. fresh blueberries
- 1 sm. can mandarin oranges, drained
- 1/4 c. sliced almonds, toasted

Dressing:

- 1/2 c. less 1 T. oil (light olive oil is okay)
- 1 T. sesame oil
- 1/3 c. vinegar (any flavor works well)
- 1/2 c. sugar
- 1/2 c. chopped onion
- salt and pepper to taste

Layer spinach, berries and oranges in a large bowl. Place all dressing ingredients in blender and blend until smooth. Toss salad with dressing and almonds just before serving.

Jen Rekuz, Detroit, June '03

Rio Grande Squash

- 5-8 yellow squash, peeled and sliced in 1/4-inch rounds
- 3 T. minced onion
- 4 T. butter
- 1 1/2 c. grated cheddar cheese
- 1-10 oz. can Ro-tel® tomatoes and green chilies, drained
- salt and pepper to taste
- 2 T. butter, melted
- 1/3 c. Ritz® cracker crumbs

In a skillet, cook squash and onion with 4 tablespoons butter until tender; drain. In a 2 quart casserole, combine squash, cheddar cheese, tomatoes, salt and pepper. Drizzle melted butter over all and top with crumbs. Bake at 350° for 30 minutes or until hot and bubbly. (Add 1 lb. of cooked, ground chuck for a tasty main dish.)

Mary Ann Frazee, Baldwin, March '03

Banana Oatmeal Cookies

- 3/4 c. butter or margarine
- 1 c. white sugar
- 1 egg
- 1 lg. banana mashed
- 3/4 t. cinnamon and 1/4 t. nutmeg
- 1 t. salt
- 1/2 t. baking soda
- 1 1/2 c. rolled oats
- 1/2 c. chopped nuts
- 1/2 c. raisins
- 1 1/2 c. flour

In a large bowl, mix all ingredients together. Drop by teaspoonfuls onto a lightly greased cookie sheet. Bake at 350° about 10 minutes until light brown.

*Dorothy Richards, Mancelona
"Recipes for All Seasons" Cookbook 1984*

Pumpkin Chili

- 4 T. vegetable oil
- 1 c. chopped onion
- 2 c. chopped red bell pepper
- 3 cloves garlic, finely chopped
- 2 lb. ground turkey
- 4 14-oz. cans diced tomatoes, undrained
- 1 29-oz. can pure pumpkin
- 2 15-oz. cans tomato sauce
- 1 15-oz. dark red kidney beans, drained
- 1 15-oz. light kidney beans, drained
- 1 15-oz. black beans, drained (optional)
- 2 4-oz. cans diced green chilies
- 1 15-oz. can whole kernel corn
- 1 15-oz. can chicken broth
- 2 T. chili powder
- 2 t. ground cumin
- 2 t. salt
- 1 t. ground black pepper
- 1½-2 c. water, optional

Heat vegetable oil in a large saucepan over medium-high heat. Add onion, bell pepper and garlic; cook, stirring frequently for 5-7 minutes or until tender. Add turkey; cook until browned. Drain. Add tomatoes with juice, pumpkin, tomato sauce, beans, chilies, corn, chili powder, cumin, salt and pepper. Bring to a boil. Reduce heat to low, cover and cook, stirring occasionally, for 30 minutes. Add water to thin to desired thickness. Serve with shredded cheddar cheese and saltine crackers or scoop style tortilla chips. Serves 8-10.

Jennifer Hansen, Mason, May '05

Honey Oatmeal Bread

- 1 c. boiling water
- 1½ c. rolled oats
- 1/3 c. honey
- 1/4 c. butter
- 1 T. salt
- 2 pkgs. dry yeast
- 1/2 c. warm water
- 2 eggs
- 4½-5 c. flour
- 1 c. sour cream

Combine boiling water, oats, honey, butter and salt; stir until melted. Add sour cream; cool until lukewarm. Dissolve yeast in 1/2 cup warm water. Add yeast, eggs and 2 cups flour to oat mixture; beat until smooth. Add enough flour to make a stiff dough. Knead until smooth and elastic. Place in a greased bowl; cover and let rise 20 minutes. Divide dough in half; shape each half into a loaf. Place into 2 greased loaf pans. Cover with plastic wrap and refrigerate 12-24 hours. When ready to bake; remove from refrigerator and let set



at room temperature for 10 minutes. Bake at 375° for 40-45 minutes. Remove from pans; cool on racks.

Janice Thompson, Martin, Oct. '09

Fudge Truffle Cheesecake

- 1½ c. vanilla wafer crumbs
- 1/2 c. confectioner's sugar
- 1/3 c. baking cocoa
- 1/3 c. melted margarine
- 3 8-oz. cream cheese, softened
- 1 14-oz. can sweetened condensed milk
- 2 c. melted chocolate chips
- 4 eggs
- 2 t. vanilla
- 1 c. chocolate chips

Combine wafer crumbs, confectioner's sugar, cocoa and margarine; mixing well. Press into the bottom and 1 inch up the sides of a 9-inch spring form pan. Beat cream cheese in a large bowl until fluffy. Gradually add condensed milk beating until smooth. Beat in melted chocolate, eggs, vanilla and chocolate chips; mix well. Spoon over prepared crust. Bake at 300° for 65 minutes until center is set; chill. Garnish if desired. Refrigerate leftovers.

Mary Decremmer, Rapid River, Feb. '06

Swiss and Bacon Salad

- 2 c. torn iceberg lettuce
- 2 c. torn Romaine lettuce
- 4 oz. Swiss cheese, cut into 2x¼-inch strips
- 1 sm. red onion, thinly sliced
- 1/2 c. salad dressing or mayonnaise
- 2 T. sugar
- 10 slices bacon, crisply cooked and crumbled

In a small bowl, combine mayonnaise, sugar and bacon. This will be thick. Refrigerate 1 hour to blend flavors. In a large bowl, combine salad ingredients. Just before serving, mix dressing with salad and toss until well coated. Makes 4-6 servings.

Mary Ann Schultz, Scottville, Feb. '05

Jalapeño Pepper Appetizers

- 10 medium-sized, fresh jalapeño peppers
- 4 oz. cream cheese, softened
- 10 strips bacon, halved

Cut peppers lengthwise and remove seeds, stems and center membrane. Stuff each half

with 2 teaspoons cream cheese. Wrap each with bacon and secure with a toothpick. Place on broiler rack coated with cooking spray. Bake at 350° for 20-25 minutes or until crisp.

Bette Savage, Bad Axe, October '03

Sweet Potato Biscuits

- 1 c. mashed, sweet potatoes
- 2/3 c. milk
- 4 T. melted butter
- 1¼ c. flour
- 3½ t. baking powder
- 2 T. sugar
- 1/2 t. salt

Combine sweet potatoes, milk and melted butter. Sift together dry ingredients; add to mixture stirring to make a soft dough. Turn out onto a floured board and toss lightly until outside looks smooth. Roll out to 1/2-inch thick. Cut with a floured biscuit cutter. Place on a greased baking sheet. Bake at 450° for about 15 minutes.

Betty Vanderkolk, Grand Rapids, May '03

Fancy Meatloaf

- 3 lbs. ground chuck, kept cold
- 1 lb. pork sausage, kept cold
- 3 eggs
- 1/2 c. chopped green pepper
- 1/2 c. chopped onion
- 2 c. fresh breadcrumbs
- 2 sticks kielbasa
- 1 can tomato soup
- 4 strips bacon
- 2 T. BBQ sauce
- salt and pepper

Combine ground meats, eggs, green pepper, onion, salt, pepper and bread crumbs. Place half of the mixture in a shallow baking dish. Flatten to loaf size. Slice kielbasa lengthwise and place two lengths on loaf about an inch apart. Add 1/2 of the remaining meat mixture to the loaf. Top with two kielbasa lengths. Top with the remaining meat mixture and shape into a loaf. Combine BBQ sauce and tomato soup. Pour over loaf and top with bacon strips. Bake at 350° for 1 1/2 hours or until done. Serves 10-12.

Paula Brousseau, Bellaire, April '04



Send in your recipes! If published, you'll receive a free kitchen gadget. Send in: your **SAUSAGE recipes by Dec. 10**, **BUDGET-FRIENDLY recipes by Jan. 10**, and **CHEESE recipes by Feb. 10**. Mail to: *Country Lines* Recipes, 2859 W. Jolly Rd., Okemos, MI 48864; or email jhansen@countrylines.com.



Be Winter Wise



Home Heating Assistance Programs • 2010–2011 Season

The Michigan Public Service Commission and the state's regulated gas and electric companies, including rural electric co-ops, are encouraging senior citizens, low income, and unemployed utility customers to **"Be Winter Wise"** if faced with high bills they cannot pay this winter. "Winter Wise" customers will be protected against loss of their utility service. Following are the provisions of home weatherization and house heating assistance programs, and special provisions for customers with medical emergencies.

Program: Winter Protection Plan

Contact: Your Local Utility Company

Income Guidelines 2010–2011	
# in Household	150% Poverty Guide Maximum Income
1	\$16,245
2	21,855
3	27,465
4	33,075
5	38,685
6	44,295
7	49,905
8	55,515

Add \$5,610 for each additional member.

Note: All seniors 65+ are eligible regardless of income. Customers are responsible for all electricity and natural gas used. At the end of the protection period, participants in the plan must make arrangements with their utility company to pay off any money owed before the next protection period.

The **Winter Protection Plan** protects eligible senior and low-income customers from service shut-offs and high utility bill payments during the winter months (Nov. 1–Mar. 31). You may enroll between Nov. 1 and March 31. If you are an eligible low-income customer, your utility service will remain on from Nov. 1 through Mar. 31, if you:

- pay at least 7% of your estimated annual bill each month, **and**
- make equal monthly payments of 1/12 of any past due bills.

When the protection period ends (Mar. 31), from April 1 through Oct. 31, you must begin to pay the full monthly bill, plus part of the amount you owe from the winter months when you did not pay the full bill. **Participation does not relieve customers from the responsibility of paying for electricity and natural gas usage, but does prevent shut-off during winter months.** You qualify for the plan if you meet at least one of the following requirements:

- you are age 65 or older,
- you receive Department of Human Services cash assistance, including SSI,
- you receive Food Stamps,
- you receive Medicaid, or
- your household income is at or below the 150% of poverty level shown in the Income Guidelines chart (see chart at left).

Senior citizen customers (65 or older) who participate in the Winter Protection Plan are not required to make specific payments to ensure that their service will not be shut-off between Nov. 1 and March 31. However, seniors are encouraged to pay whatever they can during the winter so they will not have large, unmanageable bills when the protection ends.

Program: Home Heating Credit

Contact: Mich. Dept. of Treasury

# Exemp.	Max. Income	# Exemp.	Max. Income
1	\$11,929	4	24,272
2	16,043	5	28,387
3	20,158	6	32,500

You can apply for a **Home Heating Credit** for the 2010 tax year if you:

- meet the income guidelines listed at left,
- you own or rent the home where you live in Michigan, or
- you qualify based on alternate guidelines including household income, exemptions, and heating costs.

If you qualify, you may receive assistance to help pay for your winter heating bills. Forms are available in January wherever tax forms are provided, or from the Michigan Dept. of Treasury (800-367-6263, or michigan.gov/treasury). The Home Heating Credit claim form must be filed with the Michigan Dept. of Treasury **by Sept. 30, 2010.**

Program: Earned Income Credit

Contact: U.S. Treasury Dept., Internal Revenue Service

Michigan Department of Treasury

The **Earned Income Credit (EIC)** is a refundable federal income tax credit for low-income working individuals and families who meet certain requirements and file a tax return. Those who qualify will owe less in taxes and may get a refund. Even a person who does not generally owe income tax may qualify for the EIC, but must file a tax return to do so. If married, you must file jointly to qualify. File Form 1040 or 1040A and attach the EIC.

If you were raising a child in your home in 2010, you may also be able to boost each paycheck during the year with Advance EIC. Get form W-5 from your employer or call 800-TAX-FORM (800-829-3676).

You may claim a **Michigan earned income tax credit** for tax year 2010 equal to a percentage of the federal earned income tax credit for which you are eligible. See the 2010 MI tax booklet.

Program: Crisis Assistance Program

Contact: Local Michigan Department of Human Services (DHS)

State Emergency Relief Program (SER): You do not have to be a client of the DHS to apply. This program is available year-round, subject to the availability of funds, to assist low-income households that have a heat or electric shut-off notice or a need for deliverable fuel. However, if you receive a DHS cash grant, you may vendor part of that grant towards heat and electric bills. Contact your local DHS or call the Home Heating Hotline, 800-292-5650.

Program: Low-Income Home Weatherization

Contact: Local Community Action Agency

You may be able to receive help with weatherizing your home to reduce energy use if you meet low-income eligibility guidelines (see income guidelines above) and funding is available. **Weatherization** may include caulking, weatherstripping, and insulating. Contact your local Community Action Agency for more information.

Program: Medical Emergency Protection

Contact: Local Utility Company

You are protected from service shut-off for nonpayment of your natural gas and/or electric bill for up to 21 days, possibly extended to 63 days, if you have a proven **medical emergency**. You must provide written proof from a doctor, public health or social services official that a medical emergency exists. Contact your gas or electric utility for more information.

Program: Shut-off Protection for Military Active Duty

Contact: Local Utility Company

If you or your spouse has been called into **active military duty** you may apply for shut-off protection from your electric or natural gas service for up to 90 days. You may request extensions. You will still be required to pay, but your utility company will help you set up a payment plan. Contact your utility service provider.

A Gardener's Wish List

Five great gift ideas for the gardener in your life.

With another garden season gone, it's a good time to think about what tools you'll need to grow your best garden ever next year. I contacted a few gardening friends, including a couple of experts, to see what they wanted or recommended for a holiday gift for the gardener in your life (or for yourself). What I got was a wish list for practical, necessary and innovative garden fare. Perhaps some of these ideas will help you complete your shopping this year.

Neil Moran is author of the tips booklet, "Store to Garden: 101 Ways to Make the Most of Garden Store Purchases." Visit <http://tinyurl.com/2377rkv>, or neilmoran.com.

Garden Kneeler®

Gardener's Supply

This is a great idea for anyone in need of some physical assistance in the garden. In addition to arms that help you kneel on a built-in cushion, it can be flipped over and made into a chair with adjustable height.

Recommended by George Africa, owner of the Vermont Flower Farm in Marshfield.



Ace Scuffle® Stirrup Hoe

Ace Hardware

A regular hoe does a good job of moving and smoothing soil, but it doesn't cut through weeds so well, leaving the upper arms aching. This hoe slices through weeds, leaving the soil in place.

Recommended by Sheila Bergdoll Stevenson of Pickford.



Dramm® Watering Can

Dramm Corporation

Some watering cans aren't worth the plastic they're made of. Quite often the seams split or the spout breaks off. The Dramm brand of watering cans, however, are arguably the best on the market.

Recommended by Janet Moran Stack, an art teacher in Livonia.



CobraHead®

CobraHead, LLC

You can't beat the CobraHead weeder for "down in the dirt" gardening. It weeds, cultivates, scalps, edges, digs, furrows, plants, transplants, de-thatches, and harvests with ease.

Recommended by Kathy Purdy, who lives in upstate New York and is author of the popular blog, "Cold Climate Gardening."



Wood vs. Fiberglass

A couple of the products on our wish list are available with your choice of a wood or fiberglass handle. Deciding which is better is kind of like the proverbial "paper or plastic" question at the supermarket – the answer to which is better may be just as elusive.

I've used both types of handles over a number of years and it's really a coin toss. Fiberglass is good because it doesn't wear out like wood, and you can leave it in the rain without feeling guilty. However, it can break off where the handle joins the tool, relegating it to the dumpster. If a wooden handle breaks, there is the possibility of fixing it.

Super Shovel®

Wolverine Products

This innovative take on the traditional garden shovel has some menacing teeth at the end for penetrating stubborn soils. It slices through roots, rocky soil and even baked clay.

Recommended by Sheila Bergdoll Stevenson of Pickford.



Humidifiers Cool Air, Energy Bills

Most people suffer during winter from overly dry air in their homes. Since the indoor humidity level drops or increases gradually as seasons change, the variation in these levels may not be noticed. These changes throughout the year are a function of the region of the country, so always check with local experts for specific advice.

Properly humidified indoor air is not only comfortable and healthy for your family, but it can reduce your winter heating bills.

Room humidifiers typically use less energy than a 100-watt lightbulb. Many models have built-in humidistats that automatically switch the unit on and off, so they consume even less electricity than listed on the unit's nameplate.

There is a cooling effect when the water from the humidifier evaporates, so running the humidifier will actually cool a room's air slightly. This is the same evaporation process (perspiration) of moisture from your skin that makes you feel cool as water changes from liquid to vapor (gas). However, the heat generated from the humidifier's electricity usage offsets the slight cooling effect.

Just like sweating outdoors on a low-humidity day can make you feel cool, the same process occurs indoors in dry air. The amount of moisture evaporation from your skin is greater when the indoor air is excessively dry, so you may actually feel chilly when the indoor air temperature is high enough for comfort. The evaporation of your skin's moisture can also dry your skin, make you itch, and irritate sinuses.

Running a humidifier helps you save energy by reducing the chilling effect of the evaporation of skin moisture. By properly humidifying the air, you can feel comfortable at a lower room temperature. This allows you to set the furnace thermostat lower and you should end up saving much more energy than the humidifier uses.

Depending on your specific climate, you should be able to save 1 percent to 2 percent on your heating bills for each degree you lower your furnace or heat pump thermostat setting.

The proper type of room humidifier depends on your family's needs and the size

and room layout of your house. One or two room humidifiers are generally enough for a reasonably airtight, energy efficient home. Older, leaky houses may need more or larger-capacity models. Humidity in the indoor air tends to naturally migrate throughout the house. Cooking, bathing and washing clothes and dishes also adds a significant amount of moisture to the room air. Often they add too much in specific rooms, such as bathrooms.

For daytime use, an evaporative type of humidifier is effective and the least expensive to buy. These models use a wick material which has one end submerged in a water reservoir and naturally draws water up from the reservoir. There is a fan inside the humidifier that draws room air through the wick, where it evaporates into the air stream.

Evaporative humidifiers are easy to keep clean, which is important to minimize mold and microbe growth in the wick. Some wicks are treated with an antimicrobial substance. Evaporative models usually have a three-speed fan. The high-speed setting can be noisy, so this may not be the best option for a bedroom. The low-speed setting on some models is quiet enough not to interrupt sleep.

If your children tend to get colds, a warm mist humidifier is a good bedroom choice. These models boil water to create water vapor, and the steam is mixed with room air before it comes out so it is not too hot. Germ-free models include a UV (ultraviolet light) purifier chamber to further sanitize the air flowing through it. These include a humidistat and use about 260 watts of electricity.

Another design uses ultrasonic waves to create water vapor mist. These are the most energy efficient, using about 50 watts of electricity. A very quiet fan blows the mist into the room. I choose a Vicks® ultrasonic humidifier.

The following companies offer freestanding humidifiers: Essick Air, 800-547-3888, essickair.com; Holmes, 800-546-5637, holmesproducts.com; Hunter Fan, 800-448-6837, hunterfan.com; Kaz, 800-477-0457, kaz.com; and Lasko Products, 800-233-0268, laskoproducts.com.

Have a question for Jim? Send inquiries to: James Dulley, Michigan Country Lines, 6906 Royalgreen Dr., Cincinnati, OH 45244 or visit dulley.com.



The room air flows through a wet wick inside this evaporative humidifier to add moisture to the air.

"...classic! The [Stauer] tanzanite are a beautiful shade of violet blue...full of color!"

— PRAISE FOR STAUER TANZANITE FROM C. OF MISSOURI



Endangered Gem Disappearing

Tanzanite is found in only one remote spot on Earth, and it's 1,000 times rarer than diamonds. Experts say the mines will soon run dry forever, but today you can own more than 1 carat for **Better Than FREE!**

Time is running out. Geological experts predict the world's supply of tantalizing tanzanite will disappear in a matter of just a few years. Maybe sooner. High-end retailers are raising prices on this rare stone. And gem dealers are in a mad scramble to secure their claim before it's too late. Let them scramble.

Our buyer recently secured a huge cache of beautiful rare tanzanite, the precious stone loved for its vivid violet-blue color. Today you can own over 1 carat of this rare stone (1,000 times rarer than diamonds) in our spectacular **Tanzanite Cluster Ring** with a suggested retail of \$795 for only \$95. Want to learn how to get this magnificent ring for **Better Than Free**...read on.

Order the exclusive **Tanzanite Cluster Ring (1 1/5 ctw)** for \$95 and we'll give you a **\$100 Stauer Gift Coupon**. That's right. You pay \$95 and you get the Tanzanite Ring AND \$100 toward your next Stauer purchase. This is our impossible **Better Than FREE** offer.

It started with a lightning bolt. One strike set the African plains on fire and uncovered a secret that was buried for more than 585 million years. Tanzanite naturally occurs in only one place on Earth: Tanzania's remote Merelani Hills, in the shadow of Mount Kilimanjaro.

World's most endangered gem. Top-quality tanzanites can often fetch higher prices than diamonds. But, once the last purple gem is pulled from that remote spot beneath Kilimanjaro, that's it. No more tanzanite.

Reserve your piece of gem history. If you go online right now, you'll find one of the largest retailers selling tanzanite rings for well over \$2,000 each. Ridiculous. Instead, you can secure your own piece of limited-edition tanzanite history at the right price.

Better Than FREE and Guaranteed. Our **Better Than FREE** offer is so consumer friendly that we have earned an **A+ Rating** with the Better Business Bureau. But, why a \$100 Gift Coupon with your \$95 purchase? It's simple. We want you to come back to Stauer for all of your jewelry and watch purchases. If you are not 100% delighted with your ring, send it back within 30 days for a full refund of the purchase price. Just remember that the odds of finding this stone at this price ever again is like waiting for lightning to strike the same place twice.

JEWELRY SPECS:

- 1 1/5 ctw tanzanite
- Rhodium-layered .925 sterling silver setting
- Ring sizes 5-10

Tanzanite Cluster Ring (1 1/5 ctw)—~~\$795~~ \$95 + S&P PLUS

***Better Than FREE—Receive a \$100 Stauer Gift Coupon with the purchase of the Tanzanite Cluster Ring.**
Call now to take advantage of this limited offer.

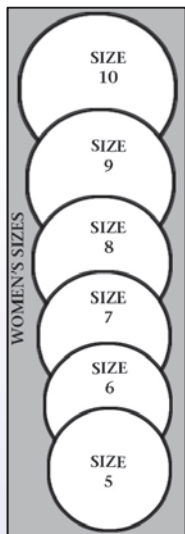
1-888-870-7339

Promotional Code CTR211-01

Please mention this code when you call.



Stauer® 14101 Southcross Drive W., Dept. CTR211-01
Burnsville, Minnesota 55337
www.stauer.com



USING THE RING SIZE CHART
Place one of her rings on top of one of the circle diagrams. Her ring size is the circle that matches the inside diameter of the ring diagram. If her ring falls between sizes, order the next larger size.

Wolverine Joins Small Nuclear Reactor Development

Wolverine Power Cooperative is one of 12 generation and transmission electric cooperatives in the B&W mPower™ Consortium. Participating utilities are working together to promote the development of B&W mPower small modular nuclear reactors.

The smaller units would generate 125 megawatts of electricity, much less than most nuclear plants in operation today. They would be manufactured in factories and shipped to plant sites by barge, rail or truck.

“Nuclear power, as we know it today, is not practical for Wolverine,” says Dan DeCoeur, the co-op’s vice president of power supply. “A small nuclear reactor approach, however, could work for a utility of Wolverine’s size and give us a new option for meeting our members’ future power supply needs.”

The goal with a modular approach is to develop plants using standard and repeatable design and construction processes. Utilities interested in the units would have a high level of confidence in project cost estimates.

The B&W mPower reactors would be installed below ground for added security, and power plant sites could be designed to accommodate an initial reactor, followed by additional units. The reactors would generate clean electricity with near-zero emissions, and used fuel would be stored in a spent fuel pool for the life of the reactor or an estimated 60 years.

Consortium members will have input in the design process for the B&W mPower units and access to design, economics and licensing information. The group will seek partial funding for the development effort from the U.S. Department of Energy.

“This program is just getting off the ground,” DeCoeur explains. “We plan to evaluate, on a regular basis, our participation in the consortium and its applicability for us and our members.”

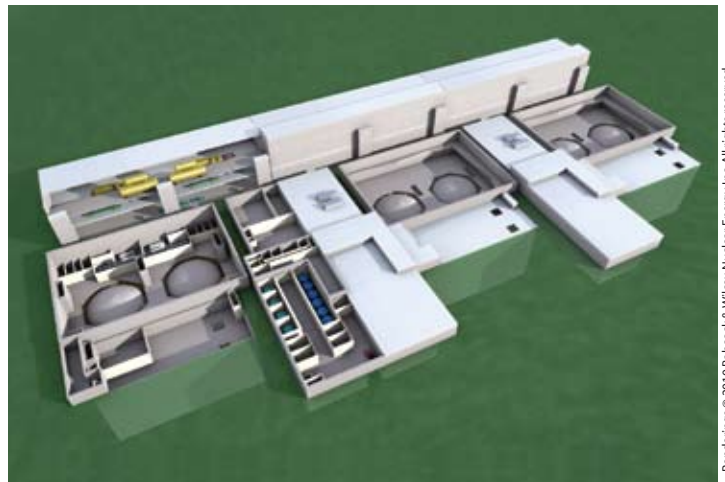
If development succeeds, the consortium is looking at the first B&W mPower units coming on-line in 2020.



Conceptual drawing of a B&W mPower™ nuclear reactor design.



Conceptual drawing of a single B&W mPower nuclear reactor module inside its own independent, underground containment.



Conceptual drawing of six B&W mPower nuclear reactors configured as a 750-megawatt nuclear power plant.

“... One of the most promising areas is small modular reactors (SMRs). If we can develop this technology in the U.S. and build these reactors with American workers, we will have a key competitive edge.”

– U.S. Secretary of Energy Steven Chu in a Wall Street Journal Op-Ed piece, March 23, 2010



Where Else Can You Pay Your GLE Bill?

Outside of GLE offices, businesses below will accept your current GLE payment. Please give them your bill remittance stub, too. The pay stations cannot accept past-due payments.

- Alden:** *Alden State Bank*
- Bayshore:** *Bayshore Market*
- Beaver Island:** *Charlevoix State Bank*
- Charlevoix:** *Charlevoix State Bank*
- Fife Lake:** *Forest Area Credit Union*
- Fremont:** *Gerber Credit Union*
- Hesperia:** *Husband & Turple Hardware*
- Johannesburg:** *Busy Bee Market*
- LeRoy:** *LeRoy Hardware*
- Levering:** *Bliss Store*
- Luther:** *Lake Osceola State Bank*
- Marion:** *Marion Pharmacy and Chuck's Corners*
- Ravenna:** *Keefe's Pharmacy*
- Reed City:** *Vic's Market*
- Tustin:** *Hoaglund Hardware*
- Walkerville:** *West Shore Bank*
- Wayland:** *Wayland Carpet*

Please contact our office, 888-485-2537, or visit our glakes.com website for other payment options.

Centennial Farm Honors

We would like to honor Great Lakes Energy member Herman Bentz of Ludington whose property in Mason County recently was designated as a Centennial Farm.

The Centennial Farm program recognizes residents throughout the state whose farms have been owned and operated by the same family for 100 years.

GLE members can request an application or receive more information about the program by contacting The Historical Society of Michigan, 517-324-1828, or by visiting centennialfarms.org.

You Can Help Other GLE Members

Help a friend or family member this holiday season by making their electric bill a little easier to handle. If you'd like to make a payment to another person's electric account, contact us and we can take your payment over the phone.

The recipients will *not* be notified by us that your payment has been applied to their account. You are welcome to send your own card or note to the family you have helped.

You can help a fellow Great Lakes Energy member by contacting us at 888-485-2537, ext. 8924.

Member Survey Planned

Northwestern Michigan College will begin calling a random sample of Great Lakes Energy residential members in early November as part of our annual member survey. The survey asks 69 questions on a variety of topics ranging from overall satisfaction to level of satisfaction with specific aspects of service, to interest in products and more.

The data will be tabulated and cross-referenced to generate a detailed report on how our members think we're doing. The results will give us important feedback on our performance that we can use to make improvements and adjustments to our service.

Representatives from the college will be calling members in the evening. Members will not be asked for any personal or financial information.

2010 Reliability Goal Remains Within Reach



SAIDI Says

SAIDI (pronounced SAY-DEE) says Great Lakes Energy finished the third quarter of 2010 with more average outage minutes than for the same period last year. However, we still remain on target to reach our annual goal.

Data from the previous five years was used to establish the 2010 goal, which is to not exceed 208 average outage minutes.

On Oct. 1, 2010, average outage minutes totaled 137.29 minutes compared to 109.82 minutes reported on the same date a year ago.

SAIDI stands for System Average Interruption Duration Index. It's an indicator of the average amount of time a GLE member could be without power in a given year. Since it represents an average, some members actually experience no outage times, while others experience more than the SAIDI number.


Continued large investments in reliability improvements are helping GLE march toward its ultimate goal of not exceeding 90 average outage minutes per year. This will take time, given our large 26-county service area and the financial resources required.

Watch for future issues of *Michigan Country Lines* for more SAIDI goal updates.

BUSINESS OPPORTUNITIES

BE IN BUSINESS FOR YOURSELF – Not by yourself. Full training and support provided. jcaruso.theonlinebusiness.com

FINANCIAL

HOMEOWNERS 62 OR OLDER – With an FHA government-insured "Reverse Mortgage," can use the equity in their home with no monthly payments. Call James Harry, 231-972-8898. 

Classified ad rates:

- ▲ \$3 per word (\$30 min.), including ALL business, agent and broker ads
- ▲ \$1.50 per word (\$15 min.) for co-op members running nonbusiness ads

Each initial, group of figures, phone number, abbreviation, e-mail address and website address counts as one word. Hyphenated and slashed words count as two or more words. Ads are subject to editor's approval and editing. For member rate, attach your mailing label. To pay by credit card, include card number, exp. date, address related to the card and signature with ad. M/C or VISA only, please indicate which. Send your printed or typed ad and check made payable to MECA (advance payment required) by 15th of month prior to publication to: *Country Lines*, 2859 W. Jolly Rd., Okemos, MI 48864, or email jhansen@countrylines.com. Call 517-351-6322, ext. 201, for more information. **No classifieds accepted by telephone.** Also, place order online at countrylines.com, and ads will be posted for **no extra charge** (until the next issue of the magazine is published).

MISCELLANEOUS

BECOME AN ORDAINED MINISTER – Correspondence study. Founded in 1988. Free information. Ministers for Christ Outreach, 7549 West Cactus Rd. #104-207, Peoria, AZ 85381. ordination.org

MICHIGAN CALENDARS – Beautiful imagery. \$7.50 each or \$6 each for 3 or more. \$5 flat fee shipping, each address. 877-432-7539. farleycalendars.com

FREE BOOKS/DVDs – Soon the "Mark of the Beast" will be enforced as church and state unite. Let the bible reveal. The Bible Says, POB 99, Lenoir City, TN 37771. 888-211-1715 thebiblesaystruth@yahoo.com

OUTDOORS

GARY'S STUMP GRINDING – Cheaper by the dozen. 800-870-3871 or 231-587-9296.

NEW AND USED WOOD BOILERS – 888-825-0808. comfortableheating.com

REAL ESTATE

U.P., CURTIS – 3-bedroom, walkout basement in subdivision. 350 feet wooded road frontage, deeded lake access, large garage, hot tub and lounge rooms. 906-586-9479.

200 FEET WATER FRONTAGE – Morley Pond fishing, Morley, MI. 313-386-0924.

TRAVERSE CITY HOME – Located on Silver Lake's desirable Brakel Point Drive. 3-bedroom, 2-bath, 1,768 square feet, set on a wooded lot. Priced as it sits nearly completed at \$129,000. 269-208-7655.

100 ACRES – 1 mile south, 3 miles west of Hesperia, MI. Farm land, gravel and woods. Enough gravel to pay 10 times what it's worth. House, barn and 4 outbuildings, underground shelter. \$300,000. 956-412-9757.

WANTED

BUYING OLD WOODEN DUCK – Goose, fish, decoys. 248-877-0210.

WANTED JOHN DEERE LX188 – Lawn tractor for parts. Defective engine not a concern. 231-258-2624.

#1 Value. Escorted Tours Since 1952.

Caravan.com

New from \$995! Panama Canal, Rainforests and Beaches.
Call 1.800.CARAVAN for free 28 page info guide.
Or, visit us online at Caravan.com.

2-for-1 Book Sale!



VIEW FROM THE TOP

A collection of Jim Hough's columns from the past 10 years in *Michigan Country Lines*.



ON THEIR OWN POWER

The only book to tell the Michigan electric co-op story, from their birth in the 1930s. Filled with first-hand testimonials and experiences of the

people who blazed the trail for electric co-ops. Written by Ray Kuhl, former general manager of the Michigan Electric Cooperative Association.

Both books only \$6

Includes tax and shipping. **No substitutions.**

Book Order Form Also order on countrylines.com/store

Name (please print) _____

Address _____

City/State/Zip _____

Phone _____

NUMBER OF BOOK SETS: _____ X \$6 = _____

Credit card payment: _____ VISA _____ MasterCard

Account # _____

Name on Card _____ Exp. Date _____

Make checks payable and mail to: **MECA**
2859 W. Jolly Rd., Okemos, MI 48864

FUTURE STEEL BUILDINGS
Do-It-Yourself Steel Buildings



Ideal For:

- Recreational Use
- Boat Storage
- Bunkie
- Equipment Storage
- Garage/Shop
- PWC/Snowmobile

- 30-year perforation warranty
- Full technical support from start to finish
- Fully customized to meet your needs
- Factory-direct savings

Our building consultants are ready to take your call

Call Toll Free Today for a **FREE!** INFORMATION PACKAGE **1-800-668-5111** Ask for ext. 91

The Hardy First on the Market, Best in the Field.



OUTSIDE WOOD FURNACE
"Since 1976"

- All stainless steel construction
- No smoke, ashes or wood trash in your home
- 12 hour burn
- 10 to 100 feet from your home
- Heats home and household hot water
- 25-year warranty
- Connects to your existing central duct or hydronic system
- Units from 120,000 to 250,000 BTU's
- Financing Available
- Dealer Inquiries Welcome

Hardy Manufacturing Company, Inc.
Philadelphia, MS 39350
1-800-542-7395
www.hardyheater.com * S&S@hardyheater.com

EZ Mailbox MOUNT

Mounts to 4x4 post, held firmly by inside ribs. Screws & brackets included.

\$19.95
plus shipping & handling



No More Fixing Your Mailbox in Traffic!



For additional information & ordering:
www.ezmailboxmount.com

Patent Pending Made in Gaylord, MI

Join other Farmers for an Alaskan Farm Tour & Cruise

WITH GREAT ALASKA STATE FAIR VISIT



14 days from
\$2,499* per person
(add \$299 tax & port charges)

Call for low-cost airfare prices. Space is very limited and will sell out fast! \$100 deposits are due now to reserve your tour.

Departs August 30, 2011

Travel to the agricultural community of Palmer and visit a local farm and Palmer Botanical Gardens. Enjoy a visit to the **Great Alaska State Fair**, where you view monster-sized vegetables. Board the Alaska Railroad for your scenic journey to **Denali National Park** and overnight. Then on to **Anchorage** and **Seward** before boarding the Holland America "Ryandam" for a **seven-night cruise on the inside passage and Glacier Bay**, with stops in Haines, Juneau and Ketchikan. From Vancouver, transfer to Seattle for overnight and city tour.

For information, reservations and full itinerary, call:



NEW MODELS!
Now more powerful than ever!

FREEDOM

IT'S INCLUDED WITH EVERY DR® LEAF AND LAWN VACUUM.

Enjoy your weekends this fall. With a DR® LEAF and LAWN VACUUM you'll get a beautiful, perfectly clean lawn without raking, hassle or strain. And you'll get much more free time.

UNSTOPPABLE POWER Collect and shred acres of leaves, pine cones, pine needles, grass clippings, nuts.

HUGE CAPACITY Exclusive shredding action reduces debris 10:1, for more vacuuming and less unloading.

BUILT TO LAST Beefy steel frame, large hoses, hard shell collector, commercial engine options.

FREE DEPOT SHIPPING!
For a limited time.

PLUS! WALK-BEHIND MODELS AVAILABLE!

Call for a **FREE DVD & Catalog!**
TOLL FREE **1-877-201-8882**
www.DRleafvac.com

6 MONTH HANDS-ON TRIAL

Never have to buy fuel — oil, gas, kerosene, wood — ever again!

Lifetime Warranty

Hydro-Sil is a high performance individual room heating system that allows you to control your home heating cost by replacing old and inefficient heating. It can replace or supplement your electric heat, gas or oil furnace and woodstoves.

A one-time purchase that will last a lifetime: inside the heater is a sealed copper chamber filled with a harmless silicone fluid designed for heat retention qualities. The fluid is quickly heated by a varying amount of micro-managed proportional power. This exclusive technology greatly increases energy efficiencies.

Your Benefits with Hydro-Sil:

- Zone controlled heating cost with Hydro-Sil
- No service contracts. Lifetime warranty.
- Safe, complete peace of mind
- Clean, no fumes, environmentally safe
- U.L. listed
- No furnaces, ducts, or chimneys
- Preassembled — ready to use
- Portable (110V) or permanent (220V)
- Whole house heating or single room

Contact us today for info and FREE catalog!

220 VOLT PERMANENT	Approx. Area to Heat	S&H	Discount Price	Qty.
8' 2000 w	250-300 sf	\$25	\$319	
6' 1500 w	180-250 sf	\$25	\$289	
5' 1250 w	130-180 sf	\$25	\$259	
4' 1000 w	100-130 sf	\$18	\$239	
3' 750 w	75-100 sf	\$18	\$189	
2' 500 w	50-75 sf	\$18	\$169	
Thermostats — Call for options & exact heater needed.				
110 VOLT PORTABLES (Thermostat included.)	S&H	Discount Price	Qty.	
5' Hydro-Max 750-1500 w	\$25	\$229		
3' 750 w — Silicone	\$18	\$179		
Heavy-Duty 240v	\$25	\$329		
Total Amount				

Name _____
Address _____
City _____ St _____
Zip _____ Phone _____
MasterCard, Visa or Discover Account Information:
Acct # _____
Expiration Date _____

Check MasterCard Visa Discover

1-800-627-9276

www.hydrosil.com

Hydro-Sil, P.O. Box 662, Fort Mill, SC 29715

Rate Restructuring to Take Effect

A rate restructuring adjustment to take effect Jan. 1, 2011, involves an increase in the monthly (quarterly) charge with a corresponding decrease in the energy usage charge.

Specifically, the two changes are:

1. The energy usage charge for permanent residents will decrease from 9.981 to 9.590 cents per kilowatt-hour (kWh) and for non-permanent (seasonal) residential accounts it will decrease from 16.659 to 15.066 cents per kWh.
2. The monthly charge for residential accounts will increase from \$12 to \$15 per month and the quarterly charge for seasonal residential accounts will increase from \$36 to \$45 per quarter.

This restructuring was approved by the Michigan Public Service Commission in

August, along with a rate increase that has already gone into effect. An increase in the outdoor lighting service rate was also approved.

The rate restructuring won't affect the total amount of revenue collected by the cooperative. It is "revenue neutral" because it shifts part of the increase from the energy usage charge to the monthly/quarterly charge.

The shift between the two charges is a step toward a fairer rate structure that is occurring with many electric utilities in Michigan and across the country.

The additional revenue from the rate increase will allow the cooperative to continue investing heavily in its electric distribution system. The co-op continues to make progress in improving reliability on a system where about 60 percent of its lines are at least 40 years old.

Why Buy a Marathon® Electric Water Heater?

- ▲ Replace your old electric water heater with a Marathon® unit and receive a \$250 rebate.
- ▲ Switch from a fossil-fueled water heater to a Marathon heater and receive a \$500 rebate.
- ▲ Marathon's plastic tank won't rust or corrode and is warranted not to leak for as long as you own your home. No smelly anode rod, either.
- ▲ The plastic tank is insulated like a giant thermos bottle with environmentally-friendly Envirofoam® insulation.
- ▲ Receive a reliable product that comes with a six-year parts and labor warranty.
- ▲ In addition to the energy it will save, you can save more (up to \$90/year) by participating in our load management program.

Marathon®
WATER HEATERS



Contact Great Lakes Energy for more information.

Restrictions may apply.
888-485-2537, ext. 8957

Marathon is not regulated by the MPSC.

Information for All Members of

Great Lakes Energy Cooperative

Your cooperative offers a program called the People Fund, which is funded through the voluntary rounding up of your monthly utility bill to the next whole dollar.

An all-volunteer board of directors appointed by the member-elected board of Great Lakes Energy Cooperative distributes the funds throughout the cooperative's service area. The Fund supports charitable efforts in and around the communities we serve. Money from the People Fund has been distributed to educational programs, fire departments, medical emergency groups, recreational organizations serving all ages, senior organizations, college scholarships, local economic development initiatives, and numerous local charities. A copy of the most recent People Fund annual report, which details contributions, is available by contacting Great Lakes Energy, and prior year reports are highlighted in previous issues of *Michigan Country Lines* magazine.

Your participation in the People Fund is voluntary. If at any time you wish to discontinue participation in the People Fund, please let us know and we will make the change. If you are participating, your monthly bill is rounded up to the next whole dollar. If your bill is \$58.42, it would be rounded up to \$59. The 58 cents would then be contributed by Great Lakes Energy Cooperative on your behalf to the People Fund, to be used as explained above. A member's average annual contribution is about \$6. Your annual contribution to the People Fund is tax deductible and is reported on your monthly statement at the end of the year.

For additional information regarding the People Fund, you can contact the co-op office by mail or call 1-888-485-2537.



STATE OF MICHIGAN

BEFORE THE MICHIGAN PUBLIC SERVICE COMMISSION

NOTICE OF HEARING FOR THE CUSTOMERS OF GREAT LAKES ENERGY COOPERATIVE CASE NO. U-16429

- Great Lakes Energy Cooperative plans to use a power supply cost recovery factor of \$0.01144 per kilowatt-hour (kWh) to compute its member-customers' bills for the 12-month period ending December 31, 2011, if the Michigan Public Service Commission approves its request.
- The information below describes how a person may participate in this case.
- You may call or write Great Lakes Energy Cooperative, 1323 Boyne Avenue, Boyne City, Michigan 49712, (888) 485-2537 for a free copy of its application. Any person may review the documents at the offices of Great Lakes Energy Cooperative.
- The first public hearing in this matter will be held:

DATE/TIME: December 16, 2010, at 9:00 a.m.
This hearing will be a prehearing conference to set future hearing dates and decide other procedural matters.

BEFORE: Administrative Law Judge James N. Rigas

LOCATION: Michigan Public Service Commission, 6545 Mercantile Way, Suite 7, Lansing, Michigan

PARTICIPATION: Any interested person may attend and participate. The hearing site is accessible, including handicapped parking. Persons needing any accommodation to participate should contact the Commission's Executive Secretary at (517) 241-6160 in advance to request mobility, visual, hearing or other assistance.

The Michigan Public Service Commission (Commission) will hold a public hearing to consider the September 30, 2010 application of Great Lakes Energy Cooperative (Great Lakes) to implement a power supply cost recovery (PSCR) plan and PSCR factor of \$0.01144 per kWh to compute its member-customers' bills for the 12-month period January 1, 2011 through December 31, 2011. Great Lakes' requested PSCR factor assumes a \$0.06527 per kWh allowance for cost of power supply included in base rates.

All documents filed in this case shall be submitted electronically through the Commission's E-Dockets website at: michigan.gov/mpscedockets. Requirements and instructions for filing can be found in the User Manual on the E-Dockets help page. Documents may also be submitted, in Word or PDF format, as an attachment to an email sent to: mpscedockets@michigan.gov. If you require assistance prior to e-filing, contact Commission staff at (517) 241-6180 or by email at: mpscedockets@michigan.gov.

Any person wishing to intervene and become a party to the case shall electronically file a petition to intervene with this Commission by December 9, 2010. (Interested persons may elect to file using the traditional paper format.) The proof of service shall indicate service upon Great Lakes' attorney, Shaun M. Johnson, Dykema Gossett PLLC, Capitol View, 201 Townsend Street, Suite 900, Lansing, Michigan 48933.

Any person wishing to make a statement of position without becoming a party to the case may participate by filing an appearance. To file an appearance, the individual must attend the hearing and advise the presiding administrative law judge of his or her wish to make a statement of position. All information submitted to the Commission in this matter will become public information: available on the Michigan Public Service Commission's website, and subject to disclosure.

Requests for adjournment must be made pursuant to the Commission's Rules of Practice and Procedure R 460.17315 and R 460.17335. Requests for further information on adjournment should be directed to (517) 241-6060.

A copy of Great Lakes' request may be reviewed on the Commission's website at: michigan.gov/mpscedockets, and at the office of Great Lakes Energy Cooperative, 1323 Boyne Avenue, Boyne City, MI 49712. For more information on how to participate in a case, you may contact the Commission at the above address or by telephone at (517) 241-6180.

Jurisdiction is pursuant to 1909 PA 106, as amended, MCL 460.551 et seq.; 1919 PA 419, as amended, MCL 460.54 et seq.; 1939 PA 3, as amended, MCL 460.1 et seq.; 1982 PA 304, as amended, MCL 460.6h et seq.; 1969 PA 306, as amended, MCL 24.201 et seq.; and the Commission's Rules of Practice and Procedure, as amended, 1999 AC, R 460.17101 et seq.

October 12, 2010

Thanks & Giving

This is the month of America's holiday. Sure, we celebrate the U.S. on July 4th, but not the same way we celebrate 'us' on Thanksgiving. On other holidays, we are expected to give gifts, send cards or make a lot of noise. But on Thanksgiving, our most-traveled holiday, we make the extraordinary effort to gather as family, traveling great distances to get together for a day or two to share a meal (and its leftovers). We make a big deal about the turkey, dressing and pumpkin pie. But is it about the food or the sharing?

The first Thanksgiving, at Plymouth Colony in Massachusetts in 1621, celebrated the bounties of the fall harvest. Now, we've got food galore in more guises than those first celebrants could ever have imagined. The staggering array of boxes and cans that line the shelves and frozen sections of every Meijer, Walmart, Kroger, Spartan and convenience store in Michigan is downright intimidating. This explains why it takes me so long to get out of the store when I just go for milk and bananas, but end up with a cartful of 'food' I shouldn't be eating. You know what I mean.

Apparently, this isn't the first time in human history that we've overeaten. In his entertaining new book, "At Home, A Short History of Private Life," Bill Bryson recounts the excessive eating that existed among the well-to-do in 18th-century England. Queen Anne grew so big she couldn't use the stairs. A trapdoor was "cut in the floor of her rooms at Windsor Castle through which she was lowered, jerkily and inelegantly, by means of pulleys and a hoist to the state rooms below."

We were in Chicago a few weekends ago to visit our son Jon, see the sights, and enjoy the city's terrific restaurants. In the most unpretentious restaurants you will find amazing meals cooked to perfection, and at reasonable prices. Dressed up or down, everyone seems to be "eating out." Chicago is a feast for the masses.

Yet, around the corner you'll find a homeless man or woman begging for change.

In this city of plenty, and across the

country, many people don't get enough to eat, or if they do, it is the worst kind of food—the kind that makes them full but doesn't nourish the body. And that kind of eating simply magnifies their health problems as they grow older, adding to the cost of health care for everyone.

According to a recent national study by Feeding America, over 1.1 million Michigan residents relied on assistance from food banks last year, a record-setting number. Think about it: More than one out of 10 residents in our state don't get enough food.

Since the last hunger study in 2006, demand for food assistance has increased by 81 percent in food pantries, 75 percent in soup kitchens, and 56 percent in shelters.

Nearly 200,000 different individuals receive emergency food assistance each week; nearly one-half are children and the elderly. They often must choose between paying for food, utilities or housing—all this while we're surrounded by an orgy of edible stuff.

If you want to help, your local food bank is a good place to start.

Regional food banks collect, store and distribute millions of pounds of surplus vegetables, fruit and other grocery items to more than 2,500 local agencies serving Michigan's 83 counties. The outlets include food pantries, soup kitchens, homeless shelters, hospices, domestic violence shelters, Head Start and after-school programs, half-way houses, and group homes for people with mental illnesses.

You can find out which services are available in your area on the Food Bank Council of Michigan website at fbcmich.org, which is made up of member regional food banks.

One thing that might help people avoid this kind of food crisis in the future is to teach them how to make their own nutritious meals from the food available. And yet, that is exactly the kind of training we are cutting out of our middle and high school curriculums. What used to be called "Home Economics" or, more recently, "Life Skills," is now being cast aside in favor of more computer work.

I suppose we should expect parents to

teach those do-it-yourself skills to their kids, but with so many parents now forced to work full-time to make ends meet, how many can do it?

It is sad that more and more students graduate from high school and strike out on their own knowing so little about food and how to make a decent meal. Later on they find out how valuable that training can be.

A former student wrote a letter in October to my wife, Barbara, who just retired as a teacher:

"After hearing about your retirement, I will admit I was a little sad, even though it's been seven years since I've taken one of your classes at Mason Middle School. I never realized how important all of those lessons were until I found myself an independent, struggling, poor college student. Even my first couple of years here away from home I depended on others to prepare my meals, wash my dishes and, with the help of loans, pay for most of my expenses. It was not until this year, moving into my own place where I'm responsible for everything I do, I've found myself reverting to my days in your classroom—preparing healthy meals, learning how to sew, even using corrected grammar in papers I write.

The other day I ripped a hole in my favorite pair of jeans. Thanks to you, I was able to fix them myself. Thank-you for teaching us how to sew, cook healthy meals, do our own dishes and laundry, use proper grammar, waltz, and be courteous and respectful. Thank-you for going above and beyond your job as a teacher."

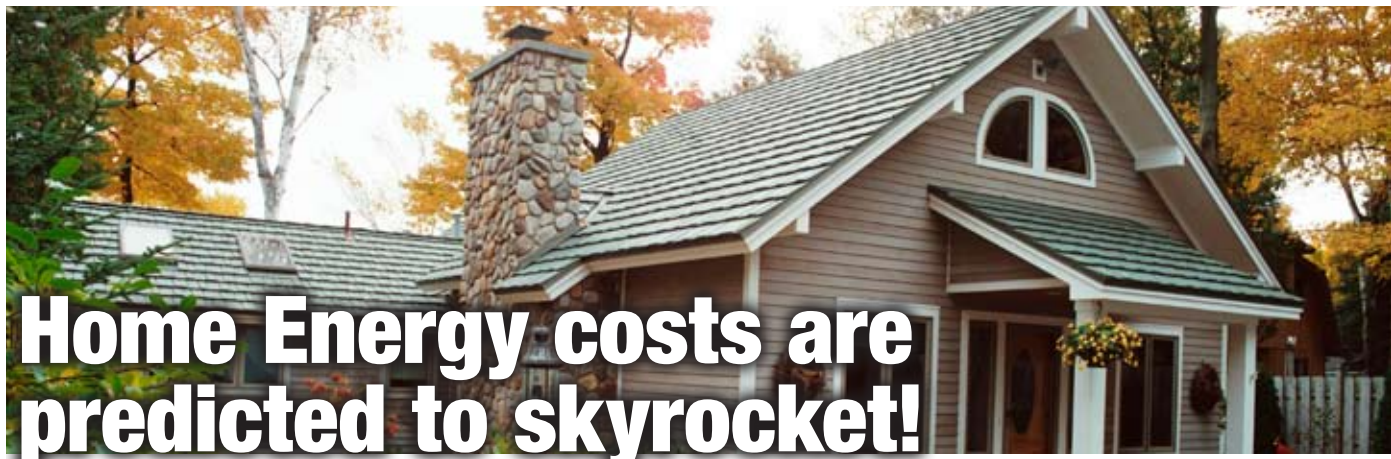
Maybe teaching our kids how to eat healthily is the way out of our food crisis, which seems to be about having too little and too much.

Until we come to our senses, please think about your local food bank this holiday season and throughout the year.

Thanks for joining us.



Mike Buda, editor emeritus of Country Lines, learned how to cook from his mother and how to take chances in the kitchen from his father. Email Mike at mbuda@countrylines.com or comment on his columns at countrylines.com/column/ramblings/



Home Energy costs are predicted to skyrocket!

Rates will more than double. American Metal Roofs offers a permanent solution and guaranteed energy savings!

The latest projections for increases in home energy rates over the next ten to twenty years are quite sobering. Homes that currently pay \$250 per month could end up paying \$1000 or more per month for home energy by 2020.

Energy Costs are Going Through the Roof. Literally!

Failing asphalt roofs are an expensive drain on home energy consumption, especially heating and cooling costs. Today's asphalt roofs typically fail after just ten to twelve years. A failing roof could mean leaks in the attic resulting in wet insulation, causing reduced R-value and higher energy bills. Even if your roof is not leaking, moisture escaping from bathrooms, dishwashers, and washing machines can get trapped in your insulation. And damp ineffective insulation means your home's energy is literally going right through your roof.

Act Now & Start Saving!

Solving Problem #1: Roof Leaks

The best way to save home energy is a permanent roofing solution, such as a beautiful and guaranteed American Metal Roof. American Metal Roofs are guaranteed to be leak free for as long as you own your home. An American Metal Roof is beautiful and guaranteed energy efficient. For photos, Home Energy Guarantees and customer testimonials, please visit www.AmericanMetalRoofs.com.

Solving Problem #2: Ventilation

Moisture has to have a way out of your attic. That's why American Metal Roofs created the exclusive Hi-Flow Ridge Vent. With the highest net free area of any roof vent on the market, the Hi-Flow Ridge Vent means your

attic will finally get the proper amount of airflow to allow insulation to dry out and do its job. And a dry attic is a healthy and mold free attic.

Solving Problem #3: Heat Loss

American Metal Roofs can also offer an additional layer of energy savings in your attic with HeatBarrier XP Reflective Foil Insulation. HeatBarrier XP blocks radiant heat loss in winter and heat gain in summer. That means lower energy bills year 'round. Guaranteed!



Using HeatBarrier XP and Hi-Flow ridgevents, a home can reduce its energy consumption substantially. Preventing rising energy bills.

Can you really afford heat escaping through your roof all winter?

Two Ways to Stop Heat Loss, Guaranteed!

HeatBarrier XP
Reflective Insulation



AMERICAN METAL ROOFS
Permanent, Beautiful and Energy Efficient



Learn More at www.HeatBarrierXP.com

See our Guarantees
& Photo Galleries Online!

Call Now for a FREE Home Energy Audit

Lower Penninsula:
888-221-1869
www.AmericanMetalRoofs.com

Upper Penninsula:
888-854-1435
www.AmericanMetalRoofsWI.com

Present this Coupon to receive
6 inches of Pink Insulation FREE
with purchase of HeatBarrier XP

Valid at first consultation only

*Offices are individually owned and operated.

A little change

Can make a

BIG

Difference



Newman Chapel mobile food pantry, Hesperia



Alanson Church of the Nazarene soup kitchen



Sandcastles Children's Museum, Ludington

The average Great Lakes Energy member gives just \$6 per year to the People Fund program to help local nonprofit organizations. But with the needs in our communities increasing, your contribution to the People Fund matters even more! If every People Fund supporter got just one other person to join, we could easily double the amount of money available each year to help local food pantries, senior citizen centers, youth programs and other local worthwhile causes.

There's power in numbers. More than \$206,000 in grants was awarded to local nonprofit groups in 2009 alone. Only you have the power to make a contribution to the People Fund. You have the power to make a difference.



We Need Your Help!

Enroll in the People Fund today.

1-888-485-2537 • gtlakes.com