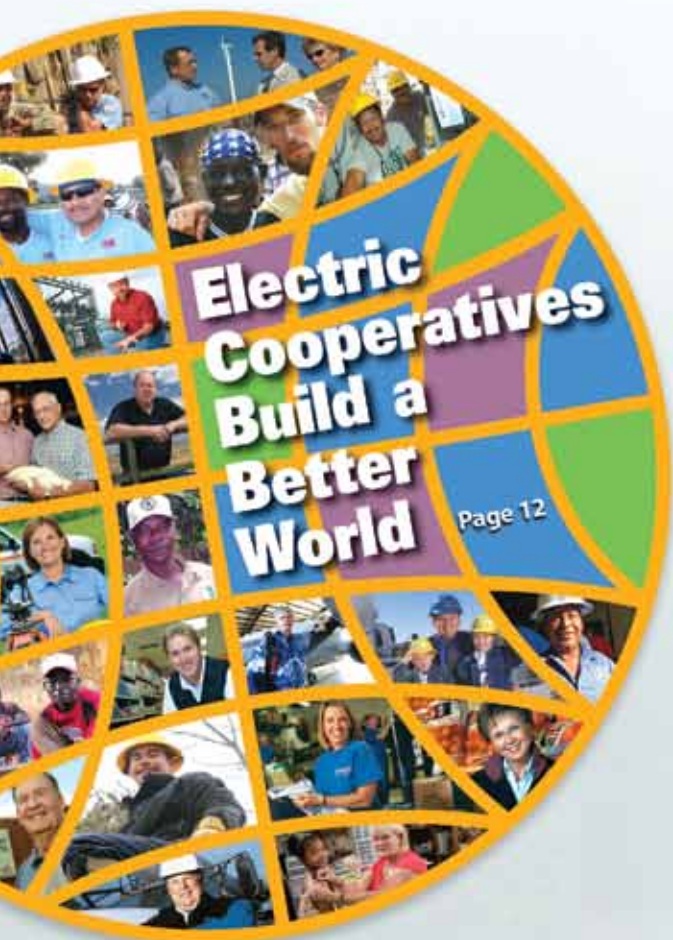


Michigan

COUNTRY LINES



**GOVERNOR
SNYDER**

TALKS WITH
ELECTRIC CO-OPS

5 Reliability For
Less Cost

9 Tree Re-Clearing
Plan For 2012

20 Working Safely
For You



SMART HOMEOWNERS CHOOSE GEOTHERMAL

In today's economy, wise purchases are more important than ever. **With the skyrocketing price of fossil fuels**, homeowners around the world have found that WaterFurnace is a **smart choice**. WaterFurnace geothermal comfort systems operate at a **fraction of the cost of ordinary systems**, saving you money every month. That's because WaterFurnace geothermal systems tap into the **clean, renewable energy** in your own backyard to provide **savings up to 70% on heating, cooling and hot water**. For more information and an analysis of savings potential, contact your local WaterFurnace dealer. **It's money in the bank.**

YOUR LOCAL WATERFURNACE DEALERS

Bad Axe
B & D Heating
(989) 269-5280

Berrien Springs
WaterFurnace Michiana
(269) 473-5667

Big Rapids
Stratz Heating & Cooling
(231) 796-3717

Caro
AllTemp Comfort, Inc.
(866) 844-HEAT (4328)

Carsonville
Certified Temperature Innovations
(810) 300-7748

Charlotte
Applegate Home Comfort
(517) 541-8013

Cheboygan
Jim's Handyman
(231) 627-7533

Clifford
Orton Refrigeration & Htg
(989) 761-7691

DeWitt
S & J Htg & Clg
(517) 669-3705

Gaylord
Family Htg & Clg
(989) 732-8099

Grand Rapids
Montgomery Htg & Clg
(616) 459-0261

Total Comfort Resource, LLC
(616) 406-3182

Hart
Adams Htg & Clg
(231) 873-2665

Ionia
Home Experts
(800) 457-4554

Kalkaska
Kalkaska Plumbing & Htg
(231) 258-3588

Lapeer
Porter & Heckman
(810) 664-8576

Michigan Center
Comfort 1 Heating/
Lenawee Heating
(517) 764-1500

Mount Pleasant
Walton's Htg & Clg
(989) 772-4822

Muskegon
Geofurnace Htg & Clg
(800) 922-3045

Onaway
Standard Heating
(989) 733-8309

Palms
Lakeshore Improvements
(989) 864-3833

Traverse City
Geofurnace Htg & Clg
(231) 943-1000

D&W Mechanical
(231) 941-1215

Webberville
Applegate Home Comfort
(800) 377-2272



waterfurnace.com
(800) GEO-SAVE



Editor
Gail Knudtson

Associate Editor
Doug Snitgen

Design Editor
Cindy Zuker

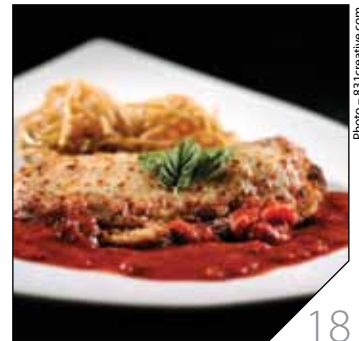
Publisher
Craig Borr



11



15



18

DEPARTMENTS

- 6 Readers' Pages**
Letters, mystery photo, scholarships, lighter living tips, youth programs
- 15 Michigan-made**
"Keepin' It Real"—Homemade foods from Wee Bee Jammin'
Gail Knudtson
- 18 Home Cooking**
Meals under \$10
- 22 Wolverine Power***
Midwest Energy joins Wolverine
Nancy Tanner

COLUMNS

- 11 Comment**
Gov. Snyder talks "rural"
Gail Knudtson
- 16 Family**
Finding quality child care
Linda Wacyk
- 17 Outdoors**
Noted nature writer, Jerry Dennis
Don Ingle
- 23 House & Home**
Heating and cooling options
James Dullely
- 26 Ramblings**
A life of curveballs
Mike Buda

FEATURES

- 10 Educating The Next Generation**
Showing kids the benefits of cooperation
Magen Howard
- 12 Cover Story**
Co-ops help build a better world
Megan McKoy-Noe
- 14 Our Energy**
Weather and your electric bill
Kris Wendtland

YOUR CO-OP

Pages specific to your electric cooperative: 1, 4-5, 8-9, 20-21, 24-25, 28

*Not in all editions

On the Cover*

The contributions electric co-ops make to building a better world will be highlighted during 2012 as the International Year of Cooperatives. Plus: Gov. Rick Snyder talks about his rural economic plans and electric co-ops.

Snyder Photo - Mike Quillanin



Michigan Country Lines, USPS-591-710, is published monthly, except August and December, with periodicals postage paid at Okemos, MI, and additional offices. It is the official publication of the Michigan Electric Cooperative Association, 2859 W. Jolly Rd., Okemos, MI 48864.

Subscriptions are authorized for members of Alger Delta, Cherryland, Cloverland, Great Lakes, HomeWorks Tri-County, Midwest Energy, Ontonagon, Presque Isle, and Thumb electric cooperatives by their boards of directors. Subscriptions are \$6 per year.

Postmaster: send address changes to Country Lines, 2859 W. Jolly Rd., Okemos, MI 48864.

Letters to the editor should be sent to the same address. Phone 517-351-6322. Email: knudtson@countrylines.com.

Association officers are Brian Burns, PIE&G, chairman; Ken Swope, Midwest Energy, 1st vice chairman; Tony Anderson, Cherryland, 2nd vice chairman; Eric Baker, Wolverine Power, secretary-treasurer; and Steve Boeckman, Great Lakes Energy, past chairman.

Craig Borr is president and CEO.

Unsolicited letters, photos and manuscripts are welcome. Country Lines, however, will not be responsible for their safe keeping or return.

The appearance of advertising does not constitute an endorsement of the products or services advertised.

Display advertising:

Doug Snitgen
517-913-3535

Change of Address: Please notify your electric cooperative. See page 4 for contact information.





Board of Directors

Robert Thurow *Chairman*

819 W. Chauvez Rd., Scottville, MI 49454
231-757-3430 • rthurow@glenergy.com

Mark Carson *Vice-Chairman*

01950 Anderson Rd., Boyne City, MI 49712
231-582-0688 • mcarson@glenergy.com

Susan Scott *Secretary*

10653 15 Mile Rd., Evart, MI 49631
231-250-4017 • sscott@glenergy.com

Larry Monshor *Treasurer*

1541 Thumm Rd., Gaylord, MI 49735
989-705-1778 • lmonshor@glenergy.com

Paul Byl *Director*

9941 W. Buchanan Rd., Shelby, MI 49455
231-861-5911 • pbyl@glenergy.com

Richard Evans *Director*

11195 Essex Rd.
Ellsworth, MI 49729
231-588-7114 • revans@glenergy.com

Dale Farrier *Director*

4400 U.S. 131 N.E., Kalkaska, MI 49646
231-564-0853 • dfarrier@glenergy.com

Robert Kran *Director*

7380 N. Tuttle Rd., Free Soil, MI 49411
231-464-5889 • bkran@glenergy.com

Richard Walsworth *Director*

3701 N. 48th Ave., Mears, MI 49436
231-873-2418 • rwalsworth@glenergy.com

President/CEO: Steve Boeckman

888-485-2537

Communications

Director/Editor: Dave Guzniczak

231-487-1316

Boyne City Headquarters:

1323 Boyne Ave.
Boyne City, MI 49712

Hours: 8 a.m.–5 p.m. M–F

Phone: 888-485-2537

To report an outage, call:

1-800-678-0411

gtlakes.com

Your Touchstone Energy® Cooperative



Make a Resolution to Support The People Fund

Why should you support the People Fund?

Three reasons:

1. It's easy to do.
2. Cost is minimal.
3. It helps fill needs in your local communities.

The last reason is the most important, especially when you see the good that the People Fund can do. On the back cover of this magazine are comments from organizations that have been helped by the People Fund. They are from communities throughout our service area where People Fund grants are making a difference. Here are just two of them:

"Thank you so much for this generous grant. You are going to help us assist local patients in fighting a difficult and costly disease. Your grant will go to work immediately saving lives." – Christie Perdue, Otsego Memorial Hospital Foundation's Diabetes Self-Management Program, Gaylord.

"Without grant assistance such as the People Fund, our Food 4 Kids Backpack program would not be making a difference in the lives of children in our area. The Great Lakes Energy People Fund is such a wonderful assistance to so many organizations in our area serving a variety of needs. Thank you for being there." – Kathy Hart, The Manna Food Project, Harbor Springs.

I would like to add my thanks to all the Great Lakes Energy members who participate in the billing round-up program that makes the People Fund program possible. By allowing us to round up your electric bill to the next dollar each month, your small contributions, which are less than \$1 each month, have added up to over \$2.23 million in People Fund grants that have been awarded since the program's start in 1999. The average monthly contribution in 2011 was just 39 cents.

In 2011, over \$176,000 of these grants were awarded to 77 organizations. They included food pantries, senior centers, youth programs, health care services and

other community causes. The complete list of recipients appears in the 2011 People Fund Annual Report attached to the cover of this magazine.

The needs of our communities are growing which means we need more members to join the People Fund. With more contributions monthly, more grants can be awarded to non-profit organizations. You can help the People Fund better meet your community's growing needs by joining today. Please review the attached annual report and note all the types of organizations and people that

can be helped by your small contribution. The report includes a sign-up card that you can fill out and return with your next bill payment. Or, you can just give our office a call and our reps will enroll you in the People Fund. One hundred percent of the money collected is granted to non-profit organizations.

If you already participate in the billing round-up program, I thank you again for your support and ask that you invite your GLE friends and neighbors to join, too.

We also hold contests each year as another way to express our appreciation to everyone who supports this program. Winners receive \$100 billing credits. No billing round-up contributions are used to fund this contest. Prize costs are covered by Great Lakes Energy as part of our commitment to support local communities and say "thanks" for supporting the People Fund.

As we enter a new year, make a resolution to help your member-owned cooperative assist those in need by joining the People Fund. It's one New Year's resolution that keeps on giving.



Steve Boeckman
Great Lakes Energy
President/CEO

Three easy ways to sign up:

BY PHONE: 888-485-2537

ONLINE: Visit gtlakes.com

BY MAIL: (See back cover wrap)



Use your mobile phone to access online.

Restoring Lines to Keep Service Reliable

Old underground power lines get a new life. **Dave Guzniczak**

Can old underground (UG) power lines be given new life at a reasonable cost so they can continue providing reliable service to Great Lakes Energy members for years to come?

The cooperative's engineering department is optimistic the answer will be "yes," following the completion last fall of a pilot project at two locations in Antrim and Charlevoix counties. It involved a line restoration process developed by Novinium, a Seattle area-based company specializing in UG cable rejuvenation products and services. Its clients include investor-owned utilities and other electric cooperatives.

"After carefully reviewing project costs, we expect our investment in restoring these underground lines is much less than replacement costs in the future," explains Justin Chase, electrical engineer. "The difference could amount to tens of thousands of dollars in savings."

In addition to cost savings, the restoration of UG lines will help ensure many more years of reliability for Great Lakes Energy members. Underground lines are more difficult to repair or replace, and thus more expensive.

A three-quarter mile span under Intermediate Lake in Central Lake was selected for the pilot project, along with shorter UG spans at the Barnard substation south of Charlevoix that go under a highway. The lines have all exceeded their 30-year estimated lifespan, but have not yet posed any serious reliability concerns. Because they're located under a lake and highway, their replacement costs would have been significantly higher than normal.

"We selected these locations based on where the most members would benefit from the pilot project with the least amount of interruption to their service," Chase adds.

Over time, microscopic cracks can develop in the UG cable insulation that can lead to cable failure. Resembling tree shapes, the cracks are typically created by moisture in the cable's core and eventually break down the insulation. Once the insulation has become weak and no longer insulates the energized core from the outer neutral wires, a resulting

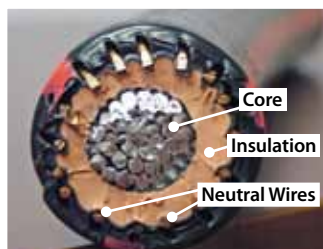


Photo - Dave Guzniczak

Above, a silicone-based compound is used to restore three underground cables that deliver power to some Great Lakes Energy members in Antrim County. The small photo at left shows the cross-section of a cable.

short circuit (arcing) will cause an outage.

After Great Lakes Energy crews safely de-energized the lines, a two-man team hired by Novinium injected a silicone-based compound into the cable cores to restore the insulation. The compound is a nonflammable, non-hazardous fluid.

It took about three days and 24 gallons of compound (8 gallons per cable) for the rejuvenating fluid to permeate the three submerged lines along the three-quarter mile section. Any moisture between the core and insulation was replaced by the fluid. The entire project at both locations took about two weeks and is expected to add another 40 years to the life of the UG lines.

"If this process is as successful as we anticipate, it will be like having new underground wires installed at approximately half the cost," says system engineer, Gus Paz.

The pressurized injection method will

not work with every type of UG cable that the cooperative has in use. The rejuvenating compound cannot penetrate UG cables with a solid metal core that are typically found in subdivisions and strand-filled cables containing a tar-like substance. Cables with many splices or badly corroded neutral wires are also not recommended for this process.

What happens if outages should occur on the rejuvenated lines as a result of insulation breakdown that the Novinium process is warranted to prevent? Under a 40-year warranty, Great Lakes Energy would be reimbursed for its costs to have the lines rejuvenated again.

The rejuvenated lines will be monitored in the months ahead to determine future use of this technology in other areas. Co-op staff will continue to research and pilot innovative technologies that can improve service reliability and reduce costs.



Iverson's Snowshoes

We really enjoyed your last *Country Lines* (Nov-Dec 2011), especially the article on Iverson's Snowshoes. We purchased a pair of these when we bought our summer cabin in 1980, and we do use them for "décor" only. This past summer we discovered they [Iverson's] were in business at the lumber yard (although closed at 5:30 p.m.). We thought they were gone—such good news and we wish them success with new owners!

Also, James Dulley's article on "How Low Can You Go?" was very interesting. We live in rural northern Illinois with one of the highest electric rates in the U.S. and we have a good size all-electric home; well insulated. In 2009, we put in a heat pump with backup heat; we also have new AC and have always had duct work (electric forced air). We've lived here

25 years and have conserved our usage, our temp is 63° in winter and 80° in summer and with the new heat pump, our bills are lower.

However, the house is very, very dusty now and I wonder if this is due to the heat pump as it draws air from outside? Is this normal for a heat pump? I always enjoyed the clean aspects of electric heat and this is a change.

Mike Buda's trip out west was delightful and I'd planned to write before the trip and say, "Don't miss the Hearst Castle in San Simeon." I got too busy—maybe he can put this on his list for the next trip.

We are from Michigan and have lived in Colorado, Utah and California. We loved the west (also a stint in Texas) but there is nothing as good as Michigan and that is why we make the 360-mile trip several times up to the U.P. and our little cabin in the summer. Your *Country Lines* gives me that needed boost to get through the winter until we go north again. Keep up the good work!

—Peggy Visser, Marengo, IL

More on "Nukes"

Bonnie Kenzie wrote in "Letters" her dismay regarding nuclear power plants. I believe that a well-rounded approach to providing energy is probably the wisest. Solar, wind, hydroelectric, coal and nuclear all have a place.

My son is serving in the Navy aboard a nuclear submarine. His attack sub displaces over 9,000 tons, and the "boomers" displace 18,000 tons. One nuclear reactor drives the sub at about 40 miles per hour, for 30 years, while supplying all the oxygen, heating, cooling, water, and other kinds of power for the sub and its 120- to 160-man crew. The reactor does not need to be refueled for that entire 30 years. All of this is accomplished with a piece of uranium the size of a golf-ball!!

This kind of power generation has been used safely since the USS Nautilus first sailed under nuclear power in 1958. There certainly may be some concerns in the civilian power generation setting, and these need to be addressed, but this type of "on demand" power dwarfs others in its safety record, cleanliness and maximum output for so little input.

I think we need to see more nuclear power research, to make it even safer, but I also think that this is where America's energy will come from in

the future. It seems to me that it has to. Where else will the power come from?

—Colin Saxton

In October's letters, the "No Nukes" writer pointed out traditional concerns over nuclear power. I felt the editor responded appropriately and pointed out the apparent limits of renewable energy sources.

In Traverse City, we have a group of people who are forcing the demolition of four existing dams which had produced electric for the community. Some of the people would tear down every dam in the world if they had their way.

In the "No Nukes" letter, the writer reminded us of the infamous Three-mile Island event in which not a single person died. We kill an average of 40,000 people per year on the roads. We average 600 airline deaths per year. It appears the U.S. nuclear power community takes their responsibility very seriously.

Statistics indicate that China consumes more coal than the U.S., Europe and Japan combined. They also continue to construct nuclear power plants and are now starting construction of one new "clean coal" power plant per month. Also, the Chinese reportedly are investigating the construction of the revolutionary thorium-fueled "Molten-Salt Reactor"

MYSTERY PHOTO

Every co-op member who identifies the correct location of the photo below by **Feb. 10** will be entered in a drawing for a \$50 credit for electricity from your electric cooperative.

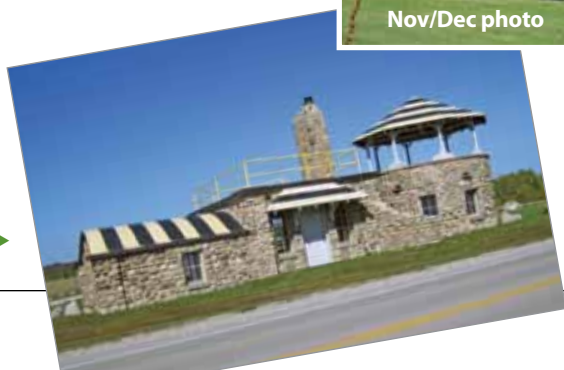
Please note that we do not accept Mystery Photo guesses by phone!

Email mysteryphoto@countrylines.com, or send by mail to *Country Lines*, 2859 W. Jolly Road, Okemos, 48864. Include your name, address, phone number and name of your co-op. Only those sending complete information will be entered in the drawing. The winner will be announced in the March 2012 issue.

The November/December contest winner is Helen Engel of Stephenson, who correctly identified Floyd's Auto on M-35 north of Menominee.



Nov/Dec photo



Do you know where this is? ▶

Scholarships Offered

Each year, the Michigan Electric Cooperative Association awards two \$1,000 scholarships to qualifying applicants. Individuals are chosen based on their scholastic achievement and extracurricular involvement during their high school career.

The applicant's parent or guardian must be a member or employee of a Michigan electric co-op, and the applicant must be planning to attend a Michigan college or

school full-time.

Selection will be based on grade point average, character, leadership, academic achievement, extracurricular and community activities, and essay response.

Applications are available at countrylines.com; click on "Youth," email tschafer@meca.coop, or call 517-351-6322, ext. 205. Eligible applications must be postmarked by *April 6, 2012*.

(MSR). One pound of thorium produces as much power as 300 pounds of uranium. In traditional reactors, you only burn 1.5 to 3 percent of the uranium fuel, but in thorium-fueled MSR reactors, you consume 99 percent of the fuel. They consider these MSR reactors “walk-away safe.” Perhaps the editor could update us on the clean-coal and MSR electric generation systems status in this country.

I wish solar and wind could provide most of our electric, but solar consumes an enormous area (it’s measured in square miles not square feet). On average, the sun only shines effectively about 25 to 30 percent of the time in the U.S. Optimum locations for wind farms typically occur far from the user, requiring prohibitively expensive distribution networks.

The writer suggests we follow the common sense of Italy—give me a break! Italy probably can’t afford matches to light a fire, and I suspect Germany will quickly abandon their ill-thought-out plan to shut down all their nuclear plants in the next 11 years. The E.U., and mostly Germany, has a little problem called Greece, not to mention Spain, Italy and Ireland. To compare their plight to an old “Hill-Billy” song—Their can-do can’t keep up with their want-to.

—James E. Benner, Cedar

More Road Trippin’

I noted with interest the part of your article (Sept., “Road Trippin’”/Mike Buda) that mentioned the decoration and display of big rigs that you saw on your trip. Did you know that each year in Mackinaw City during a weekend in September that there is something similar? The rigs are decorated and all lit up, and after a trek across the bridge they move though Mackinaw City with all the lighting turned on, horns blaring. You can hear it miles away! I make sure that I drive into town to see it. One must go early, because if you don’t you won’t get a parking space. People drive from just about anywhere to see it.

It’s quite a spectacle. All one needs to do is contact the Mackinaw City Chamber of Commerce to find out the date for the next one. It should not be missed!

Thanks for the articles, please keep them coming.

—Marilyn Oslund,
Mackinaw City

Mike Buda: Thanks for the information, Marilyn. I made up the part about the competition by truckers in the middle of nowhere, because it seemed like something they would do. It’s interesting to know that it really happens, maybe even in more places than Mackinaw City.



Share Your Tips With Readers!

Please tell us, in 50 words or less, the ways you make life better, easier, healthier and more fun.

These may include tips about health, finance, relationships, organizing time, energy and water conservation, maintaining your house and yard, gracious giving, recycling and re-using to create less waste, or giving to your community. We’ll try to print as many tips as we can in each issue.

Email czuker@meca.coop or mail to *Country Lines* Lighter Living Tips, 2859 W. Jolly Rd., Okemos, MI 48864. Please include your name and town.



STUDENTS!

WIN A TRIP TO WASHINGTON, D.C.

How would you like a chance to tour Washington D.C. with other students from around the nation?

It all starts at the Youth Leadership Summit, April 18-20 at the Kettunen Center in Tustin. This FREE high-energy experience will help you develop your leadership habits, explore career opportunities in the electric industry, and learn how to be actively involved in the democratic process. Students chosen to attend the Youth Leadership Summit will automatically be considered to win a FREE trip to the Rural Electric Youth Tour to Washington, D.C., June 16-21.

To learn more, visit miYLS.com or call 517-351-6322 ext. 206.



Youth Leadership Summit
INSPIRED BY Michigan's Electric Cooperatives

Avoid Emergency Power Hazards With This Equipment

A meter base designed for safely connecting a portable generator to your home in an emergency can be purchased for \$350 from Great Lakes Energy.

“This product allows members to safely hook up their portable generator to any residential service because all wiring connections are made outside at the meter base,” explains Barry Maginity, electrical systems technology manager. “The safety it provides is well worth the investment.”

The electric meter fits into the base, which also has a utility/generator transfer switch for safe operation of your portable generator. The switch prevents both sources from feeding power into the home at the same time and creating a dangerous situation. It also eliminates the risk of a generator back-feeding electricity into a power line and endangering lineworkers.

Installation of the meter base and generator wiring work should be done by a licensed electrician. A professional can help size a portable generator to safely meet your emergency needs and will ensure the work is done safely and correctly.

The meter base is rated for 200-amp service with a 100-amp maximum for the generator input. The top of the meter base is locked and the bottom area is left accessible for wiring in the portable generator.

Instruct your electrician to install the necessary equipment that will enable you to



Great Lakes Energy's Dave Matz holds the utility/generator transfer switch that protects lineworkers and the home when a portable generator is in use.

safely and quickly connect and disconnect the portable generator during an emergency.

The transfer switch is manually operated with a sliding interlock handle that prevents the two large circuit breakers—main (utility power) and stand-by (generator power)—from both being on at the same time.

For more details, contact Maginity at 888-485-2537, ext. 1303.

Portable generator safety tips:

- ▼ Always follow safety instructions in the manufacturer's manual.
- ▼ Always follow local, state and national fire and electric codes. A permit may be required for installation.
- ▼ Always make sure that the total electric load on your generator does not exceed the manufacturer's rating.
- ▼ Never operate a generator indoors or in an unventilated area. It produces deadly carbon monoxide fumes.
- ▼ Store gas and diesel fuel in approved containers, and keep away from kids.
- ▼ Never refuel a generator while it is running. Shut it off and let it cool for 10 minutes before refueling to minimize the danger of fire.
- ▼ Parts of the generator are very hot during operation. Avoid contact and keep children away.
- ▼ Protect the generator from rain and other moisture sources to prevent electrocution.
- ▼ When not in use, the generator should be stored in a dry location such as a garage or shed.

SOURCE: Michigan Public Service Commission

Affordable Heating Solutions

Plug-in and hard-wired units available only from your co-op.



Let us eliminate: ❌ Chilly bathrooms
❌ Cold rooms and floors ❌ Noisy heaters

Choose Convectair® heaters for your home!

Discover North America's most innovative line of electric space heaters. Convectair heaters use convection to evenly and silently distribute heat into your rooms.

Call today or visit our website for more information and pricing.

1-888-485-2537
gtlakes.com

Convectair is not regulated by the MPSC

2012 Tree Re-clearing Work Begins

The 2012 vegetation management program begins this winter in the southern part of the Great Lakes Energy service area and will later include other counties, as private contractors remove trees and limbs near power lines.

Vegetation management helps reduce tree-related power line damage, which is a major cause of outages, and helps us maintain a safe, reliable power line distribution system.

The co-op will invest \$3.1 million in 2012 to re-clear approximately 1,444 miles of power line rights-of-way (ROW) in 17 counties and 75 townships.

The amount of trimming needed to maintain adequate power line clearance depends on the tree type, its location, how it grows, and the line's voltage size. Some healthy trees may need to be removed if they pose an immediate threat to your electric service and safety. Also, trees may need to come down if they are weak, diseased, drying or severely damaged. Trees that would look unsightly



Private contractor crews will work in 2012 to remove trees near power lines for safer and more reliable electric service for Great Lakes Energy members.

or die if they were extensively trimmed are normally removed, too.

You will be notified by post card and phone if right-of-way work is planned near you. Please be sure we have your current billing address and primary phone number so we

can contact you, if needed.

Questions about ROW re-clearing should be directed to our Vegetation Management Department, 888-485-2537, ext. 8221 (central and southern counties) and ext. 1295 (northern counties).

Counties Scheduled For Re-clearing Work

Tree re-clearing work along Great Lakes Energy power lines begins this winter in the counties below. Other counties where work is planned later this year will appear in a future issue.

Allegan: Dorr, Leighton, Wayland;

Barry: Irving, Orangeville, Rutland, Thornapple, Yankee Springs;

Clare: Redding, Winterfield;

Lake: Cherry Valley, Lake, Pleasant Plains, Sauble, Sweetwater, Webber, Yates;

Mason: Amber, Branch, Custer, Hamlin, Pere Marquette, Victory;

Montcalm: Pierson, Reynolds;

Muskegon: Montague, Ravenna;

Newaygo: Denver, Goodwell, Lilley, Merrill, Norwich, Troy, Wilcox;

Oceana: Benona, Claybanks, Golden, Grant, Leavitt, Newfield, Shelby;

Osceola: Burdell, Hartwick, Marion, Middle Branch, Sherman, Sylvan;

Ottawa: Allendale, Polkton.

Seasonal Billing Rate Options

Two monthly billing plans are available to Great Lakes Energy members who are seasonal residents, including one that offers a lower rate to those who qualify.

Here are some commonly asked questions:

Q. *What is the lower rate?*

A. 9.653 cents per kilowatt hour (kWh), which is the same rate full-time residential members pay.

Q. *How do I qualify?*

A. You qualify if you used over 8,000 kWh during the prior calendar year.

Q. *Why is kWh consumption important?*

A. Any member who uses over 8,000 kWh per year is using approximately the same amount of electricity, on average, as a full-time resident. As a group, full-time residents use more energy and generate more revenue than the seasonal resident group. The additional revenue helps us better cover our costs and allows us to place them on a lower rate.

Q. *Am I automatically switched to the lower rate if I meet the usage requirement?*

A. No. You must contact us first because the lower rate requires a switch from quarterly to monthly billing.

Q. *How often are members notified of this rate?*

A. An article on seasonal rate options appears annually in *Michigan Country Lines*. Members can also monitor their usage and contact us when it exceeds the required threshold.

Q. *Will I be on this discount rate permanently?*

A. It will depend on your consumption. You are no longer entitled to the discount if your annual consumption drops below 8,000 kWh.

Q. *Will I be notified if I no longer qualify?*

A. Yes. You will receive a letter stating that your account will be changed back to the normal seasonal rate of 14.629 cents per kWh.

Q. *What is the second monthly billing plan?*

A. All seasonal residents have the option of being billed monthly at the normal seasonal rate rather than quarterly. There is no minimum usage requirement. For more information, call 1-888-485-2537, ext. 8924.

Educating the Next Generation of Community Leaders

Co-ops go the extra mile to show kids the benefits of membership.

Each June, nearly 1,500 high school students, mostly seniors-to-be, descend upon Washington, D.C., for the annual Rural Electric Youth Tour. During the week-long trip, the participants—all sponsored by their local electric co-ops—learn about co-ops, American history, and the role of the federal government.

Youth Tour stands as just one way co-ops help educate a vital segment of their consumer base: the children of electric co-op members. Kids who live in homes that receive co-op service enjoy certain benefits, ranging from Youth Tour to college scholarships to school safety demonstrations.

“Engaging kids is an important part of the cooperative difference,” says Doug Snitgen, youth programs director for the Michigan Electric Cooperative Association. “They’re members in training.”

The Touchstone Connection

Touchstone Energy Cooperatives (see touchstoneenergy.com), of which five Michigan co-ops are members, offers lots of educational initiatives for kids, be it safety, energy efficiency, or learning how electricity works. Its Super Energy Saver program, featuring cartoon character CFL Charlie, for example,

uses classroom activities and take-home items—such as light-switch covers that remind you to turn off the light when you leave the room—to show how simple steps can add up and make a difference in keeping electric bills affordable.

The Safety Factor

Safety is another important focus for youngsters. Most electric co-ops offer hotline safety demonstrations or classroom shows that highlight common electrical dangers that students may encounter. Co-op safety employees use a miniature electrified farm or townscape to highlight hazards such as climbing trees near power lines, flying kites too close to them, and what to do if a car accident leaves fallen wires nearby.

Many electric co-ops also send lineworkers into local schools to show young folks the different levels of protection they wear when on the job, further underscoring the importance of staying away from power lines.

Concern for Community

Supporting youth programs isn’t just the right thing to do—co-ops have a responsibility to do so, according to the Seventh Cooperative Principle, “Concern for Community.”

“Electric co-ops are part of the fabric of the cities and towns they serve. It’s only natural they have a hand in improving the quality of life in their communities,” Snitgen explains.

College scholarships are another prime example. Many electric co-ops in states nationwide, including some in Michigan, award scholarships to graduating high school seniors. Selection is based on an application process that includes grades, extracurricular activities and community involvement. Some co-ops even offer adult education scholarships to help cover the costs of furthering their education.

Another example is the Youth Leadership Summit (see ad on p. 7 and visit miYLS.com). For nearly 30 years, Michigan electric co-ops have sponsored a free, three-day leadership conference, now called the Youth Leadership Summit (formerly known as Electric Co-op Teen Days), for more than 30 high school students from across the state.

This co-op-sponsored experience helps high school sophomores and juniors develop leadership skills, explore electric industry career opportunities, and learn how to be involved in the democratic process, not only with their co-op, but in their communities.

“Our biggest challenge is incorporating the co-op message while keeping students engaged and active,” Snitgen adds. “We strive to balance educational aspects with recreation and fun times.”

Michigan electric co-ops also help schools and kids by providing classroom grants for innovative educational programing, supplying backpacks filled with school supplies, and even sponsoring a marathon to benefit local groups that help kids, such as Big Brothers/Big Sisters.

Some co-ops also participate in job fairs, and offer special activities—from jugglers to face painting to bucket truck rides—at their annual membership meetings.

“You can’t find anything that fits better with our cooperative principles of giving back to the community, supporting education, and cooperating than co-op/school partnerships,” Snitgen concludes. “Schools and co-ops are at the heart of most communities, so we need to be able to reach future members to have an impact.”

Support of their young members doesn’t stop at the co-op’s door. Local youth program offerings vary, so please contact your electric co-op to find out what programs they may offer (find your co-op’s contact information on page 4).



This Michigan electric co-op-sponsored group of high school students spent a week in Washington, D.C., in June as part of the national Rural Electric Youth Tour.

Gov. Snyder Asks Co-op Leaders To Help Reinvent Michigan

“The goal of our administration is not to fix, but to re-invent Michigan,” Gov. Rick Snyder told people attending a recent Michigan Electric Cooperative Association (MECA) board meeting.

“I’m working on a broader perspective—not where we’ve been, but where we need to go,” he explained. While the state has suffered some tough years, he said there’s too much negativity and fighting over a shrinking pie, and that culture must be changed by working together.

Snyder says his administration is taking “relentless positive action” on how to grow Michigan and repair the state’s economy in multiple areas.

Agriculture & the Environment

As his first example of Michigan’s “positives,” Snyder emphasized, “Agriculture is shining. Agriculture is our greatest success story in the last 10 years.”

He’s calling for continued agricultural research and development (R&D)—especially on value-added products and the processing of fruit—as well as export opportunities such as new trade agreements with Korea, credit guarantees, and phasing-out tariffs.

“Michigan is the second most-diverse agricultural state in the U.S.,” he said, and it leads the nation in blueberry production. Snyder smiled as he shared what Michigan means overseas. “I was sitting next to a Chinese businessman at a luncheon, and when I asked what he thought of Michigan, the Chinese man just smiled and said, ‘blueberries.’”

Describing directors of the Michigan departments of Agriculture and Rural Development, Environmental Quality, and Natural Resources as the “quality of life group,” Snyder talked about his relationship with these teams and said he supports ‘regulatory change that is not about what the rules are, but how the rules are applied.’ Helping them [farmers] succeed and helping them on a new path and not penalizing them is the goal.”

One of Snyder’s plans is renewal of the timber and mining industries, and good management of state lands in an environmental way. “We have to leverage these assets in a constructive, positive way that doesn’t impede business and growth.”

Regarding constructive use of the state’s assets, a discussion ensued about Wolverine Power Cooperative’s work with Michigan Technological University on R&D that is examining the use of plants and other sustainable biomass as fuel sources for generating electricity. Snyder stated, “We should look at all those opportunities.” He also questioned how the state currently leverages timberlands, noting, “We actually have stuff rotting in the woods...how dumb is that?” He added that R&D on what types of trees to grow and strategies for growing them is needed.

Market and Talent

To help ag and other sectors grow, especially the rural economy, Snyder will move forward with re-doing funding for commercially-important roads and bridges by changing the 60-year-old law that funds them.

About the state’s infrastructure, he added, “I want your input as rural citizens on the use of rural roads, bridges, rails and ports needed to get agricultural products to market.”

Snyder also wants to highlight opportunities and retraining for Michigan young people, noting that those in rural areas especially don’t have the right match of skills for long-term supply and demand.

“In five to 10 years, a number of senior managers in the agricultural industry will be retiring, and we hope to replace them with younger people,” he said.

Questions On Energy

When asked what he likes best about his job, Snyder referenced the 80 town hall meetings



Photo—Mike Quillanin

Gov. Rick Snyder shares his plans for “relentless positive action” with the MECA board and guests. He said his administration’s task is not to create jobs, but to create ways for jobs to grow and flourish.

he hosted during his campaign. “Q&A tells me if we’re doing things right or what’s missing and needs improvement... we can solve problems together.”

In regard to electric power generation, Snyder said he supports exploring both the producer and consumer sides of electricity—especially on generation fueled by natural gas. He expressed concern about long-term power supply prices.

“We need a long-term [power] supply that works well for all in our state... let’s talk about the alternatives,” he said while calling on electric co-op directors to join him and to lead outside of their comfort zones. “We need a statewide dialog with you, and need acting instead of reacting.”

Another question he fielded was about the slash in federal funding for state programs that help low-income people pay their energy bills. The governor supports a short-term solution that was recently passed by the Michigan Legislature, but indicated “...it’s not good enough to solve this short-term, we need a sustainable answer for the future.”

Speaking earlier in the day, John Quackenbush, chairman of the Michigan Public Service Commission (MPSC), agreed that a short-term fix is needed immediately to provide heating assistance this winter to low-income people. He is hopeful that a long-term program will be in place when the short-term fix expires in nine months.

“There’s still too much divisiveness in our state,” Snyder said at the meeting’s end. “I’m at war with no-one—my job is to solve problems, and it’s time to move forward... Co-ops need to help lead the charge. We will be a great state again.”



The Year of Living Cooperatively

Electric co-ops join a global celebration of member-owned businesses.

Is it possible to change the way people eat a piece of fruit? Could cheese unite communities? Can electricity transform a country's future? It's all possible...with a little cooperation.

The United Nations General Assembly has designated 2012 the International Year of Cooperatives (IYC 2012), under the banner "Cooperative Enterprises Build a Better World." The resolution recognizes the vital role co-ops—democratically governed businesses that operate on an at-cost, nonprofit basis—play in global economic and social well-being and encourages countries to foster cooperative development as a way to generate local wealth, employment and marketplace competition.

"At a time when folks are losing faith in big corporations, the International Year of Cooperatives offers us a great opportunity to showcase the many ways the local, consumer-owned and member-controlled cooperative

form of business benefits communities all over the world," declares NRECA CEO Glenn English. "It gives cooperatives a perfect venue to contrast how we differ from profit-driven companies."

Co-ops Are Everywhere

Every day, over 29,200 co-ops supply essential products and services to American consumers.

Tomorrow at breakfast, check your morning paper. Many of the articles may be labeled "Associated Press" or "AP." Those stories were written by individual reporters but distributed by a co-op news organization.

If your breakfast includes fresh-squeezed orange juice, it may be from Sunkist—a co-op formed by California and Arizona citrus growers.

And the list goes on: Land O' Lakes butter, Ocean Spray cranberry juice, Sun-Maid raisins, Welch's grape jelly, Nationwide

Cooperative Principles

When introduced into the United States by the National Grange in 1874, and formally written down by the International Cooperative Alliance (ICA) in 1937, the seven cooperative principles evolved into how they are used today. Although stated in many ways, they hold that a cooperative must provide:

1. Open and Voluntary Membership. Membership is open to all persons who can reasonably use its services and stand willing to accept the responsibilities of membership, regardless of race, religion, gender, or economic circumstances.

2. Democratic Member Control. Cooperatives are democratic organizations controlled by their members, who actively participate in setting policies and making decisions. Elected representatives (directors/trustees) are elected from, and are accountable to the membership. In primary co-ops, members have equal voting rights (one member, one vote); co-ops

at other levels are organized in a democratic manner.

3. Members' Economic Participation. Members contribute equitably to, and democratically control, the capital of their cooperative. At least part of that capital remains the common property of the co-op. Members allocate surpluses for any or all of the following purposes: developing the cooperative; setting up reserves; benefiting members in proportion to their transactions with the cooperative; and supporting other activities approved by the membership.

4. Autonomy and Independence. Cooperatives are autonomous, self-help organizations controlled by their members. If they enter into agreements with other organizations, including governments, or raise capital from external sources, they do so on terms that ensure democratic control as well as their unique identity.

5. Education, Training, and Information. Education and training for members, elected representatives (directors/trustees),

CEOs, and employees help them effectively contribute to the development of their cooperatives. Communications about the nature and benefits of cooperatives, particularly with the general public and opinion leaders, helps boost cooperative understanding.

6. Cooperation Among Cooperatives. By working together through local, national, regional, and international structures, co-ops improve services, bolster local economies, and deal more effectively with social and community needs.

7. Concern for Community. Co-ops work for the sustainable development of their communities through policies supported by the membership.

These principles are underpinned by six ideals—the so-called cooperative values of self-help, self-responsibility, democracy, equality, equity, and solidarity. In addition, ICA lists cooperative "ethical values" of honesty, openness, social responsibility, and caring for others.

Insurance, Ace Hardware, and REI outdoor gear—are all co-ops. In fact, one of every four Americans claims membership in some type of co-op, including 91 million served by credit unions and 42 million connected to over 900 electric co-ops in 47 states (Michigan has 11 electric co-ops).

While many in number, co-ops differ from “typical” businesses in one big way: they are organized for the benefit of their members, not single owners or stockholders.

“Co-ops are established when the for-profit, investor-owned commercial sector fails to meet a need, either due to price or availability of goods and services,” explains Martin Lowery, NRECA

executive vice president of external affairs and chairman of the National Cooperative Business Association Board of Directors. “The co-op business model works in housing, utilities, and in both rural and urban settings. Co-ops empower people to take control over their own economic destinies.”

“When you’re a co-op member, you have a real say in the direction of that business. That’s critical—it helps the co-op rapidly respond to changing conditions. For example, a number of electric co-ops have branched out into other pursuits beyond electricity to meet pressing consumer and community requirements,” he adds.

Dallas Tonsager, under secretary for rural development with the U.S. Department of Agriculture, points out that co-ops “are only as good as the people running them and only succeed when members support them. But well-managed, democratically run co-ops have proven time and again that when people unite to achieve a common goal, they can accomplish anything.”

On the Cutting Edge

Odds are you have orange juice in your refrigerator. But before a 1916 Sunkist advertising campaign, oranges were only eaten by the slice. By the end of World War I, however, Sunkist’s “Drink an Orange” push had increased the average serving size from one-half an orange to almost three.

This pioneering co-op tradition continues in many ways today:

- Credit unions fought off the destructive cycle of payday loans by creating salary



When people unite to achieve a common goal, they can accomplish anything.

advance loans with low rates that placed part of the borrowing into a savings account—helping members escape a cycle of debt;

- Marketing co-ops added food nutrition labels to products long before it was required by federal law;

- Electric co-ops lead the way in smart grid implementation—close to one-half have installed advanced metering infrastructure (AMI), with 30 percent integrating AMI or automated meter reading devices with various software applications, such as outage management and geographic information systems.

“Co-ops have made these investments because it makes sense for them and their members,” stresses English. “It’s an outgrowth of the co-op commitment to innovation—the same spirit that allowed co-ops to overcome seemingly insurmountable technical, engineering, legal, political and financial hurdles in the late 1930s to bring central station electricity to all corners of America. Thanks to our consumer orientation, co-ops work to ensure that all decisions—technology-based or otherwise—focus on their core mission: providing members with a safe, reliable and affordable supply of power.”

It is hard to conceive of America without co-ops, Tonsager reflects. “Agricultural co-ops have made our nation the breadbasket of the world. This occurred, in part, through

lending from the farmer-owned co-op, Farm Credit System, and power-supplied by electric co-ops. Today, electric and telephone co-ops play a vital role in deploying the advanced distribution, transmission and telecommunications infrastructure that rural America needs to prosper and stay competitive.”

Building a Better World

The IYC 2012 theme also embodies NRECA International Programs, which celebrates its golden anniversary this year. Since November 1962, this program has assisted with electrification projects that have resulted in increased agricultural output, millions of new jobs, and an enhanced quality of life for over 100 million people in 40-plus nations.

These projects are currently under way in Afghanistan, Bangladesh, Bolivia, Costa Rica, the Dominican Republic, El Salvador, Guatemala, Haiti, Pakistan, the Philippines, South Sudan, Tanzania, and Uganda. Despite progress, much work remains.

“Over 2 billion people worldwide still lack electricity and millions more must depend on unreliable and unsafe power,” emphasizes Ingrid Hunsicker, program development manager for the NRECA International Foundation, a charitable group that has partnered with over 300 U.S. electric co-ops to bring power and economic development to rural villages overseas. “In many countries, traditions of self-help, self-government, and joining together to achieve a common goal don’t exist. A dismaying array of financial problems, such as a lack of investment capital and little understanding of even the most basic accounting procedures, throw up even more barriers.”

Because circumstances vary widely, NRECA International Programs has adopted the slogan, “Electrifying the world, one village at a time.” Outreach relies on the time-tested electric co-op approach—giving individuals, many for the first time, practical experience in democratic decision-making and entrepreneurship so they can launch locally-driven services.

In many cases, volunteer electric co-op line-

Continued >

Electric Bills & Weather Patterns

Weather can affect the size of your electric bill.

Electric bills vary with the seasons, driven by weather and consumer use patterns. And, “weather matters” for many reasons, but it also affects your electric bills.

How much weather affects your electric bills depends on many factors, including your home’s original construction materials, insulation and air leaks. Personal comfort plays a role too, as does the difference between the thermostat setting inside and temperatures outdoors.

When a house stays at 68 degrees Fahrenheit, but the outdoor temperature varies from minus 20 degrees in winter to more than 100 degrees on a muggy summer’s day, demand for heating and cooling can be significant. Cooled air leaving a home essentially wastes the money spent to cool it. The same is true for air a homeowner has paid to warm.

R-value offers a way of measuring insu-

lation’s effectiveness (a higher R-value indicates more effective insulation). For example, on a 28-degree day, heat loss from a residence set at 68 degrees could hit 2,464 Btu per hour even through an 80-by-10 exterior wall packed with R-13 insulation. Reverse that situation on a scorching day—100 degrees outside—and heat gain indoors will still reach 2,464 Btu per hour.

To save money, set your thermostat 5 degrees closer (higher in summer, lower in winter) to the outdoor temperature—this simple change could result in a savings of 90 watts per hour of electricity—about 197 kilowatt hours (kWh) in three months. At a national average of 10 cents per kWh, this adjustment keeps an extra \$19.70 in your pocket.

Call your local electric co-op or energy efficiency expert and ask for an energy audit. These specialists can save you hundreds of dollars by uncovering energy waste

and making recommendations to improve energy efficiency.

In the meantime, adjust the thermostat. Keep blinds and drapes on the sunny side of your home closed in summer and open in winter. Find mysteriously “hot” or “cold” spots in the house and solve them by installing gasket seals around outlets and weather stripping along doors and windows, replacing old windows, and upgrading insulation. When practical, adjust landscaping to provide shade for your property in summer and sunlight in winter.

Weather doesn’t have to play havoc with electricity bills. There are a variety of tools, appliances and resources available to solve all sorts of energy challenges. Some, such as new windows or a roof, require significant financing. But there are a lot of options that are inexpensive and simple to benefit from.

Find more ways to save at TogetherWeSave.com and michigan-energy.org.

Living Cooperatively, *from page 13*

workers from the United States head to distant lands for a few weeks to teach their peers safe construction practices. Then NRECA staff instructs local residents on how to maintain simple power grids and run their own utilities.

“One of the challenges we face in many countries is building a rural business culture,” indicates Hunsicker. “When electric co-op employees and volunteers arrive, they outline how to create a business plan, conduct meetings, collect the full amount due from consumers, what type of generation system to invest in, and everything in-between. It’s all about discovering and building on what works. Best of all, we show the best face of not only who we are as co-ops, but who we are as Americans.”

While NRECA’s help is not limited to co-ops—municipal electric systems benefit, too—many foreign communities embrace the co-op way. Argentina boasts the largest number of electric co-ops—nearly 800—outside the U.S., while a Bolivian co-op serves over 400,000 members, ranking it as the largest electric co-op anywhere. The Philippines has 119 electric co-ops, Bangladesh 72, and the cooperation imprint can also be seen

in Costa Rica, South Sudan, Uganda, and other countries.

Spreading the Cheese

“Cooperation Among Cooperatives,” one of the seven cooperative principles (see box, p. 12), delivers great results. “Twenty years ago, as a new brand, we had absolutely nothing—we relied on electric co-ops and credit unions to let us piggyback on their annual meetings for advertising purposes,” attests Roberta MacDonald, senior vice president of marketing with Cabot Creamery Cooperative in Vermont.

Flash forward to today and the farmer-owned dairy co-op sold 8 million pounds of cheddar in addition to a host of other merchandise in 2011—enough cheese, butter, whipped cream and other items to crisscross the nation more than three times.

“By working with electric co-ops and others we were able to remind co-op members that when they bought Cabot products, they were supporting another co-op,” MacDonald adds, recounting trips made in the late 1980s and early 90s to electric co-op annual meetings. “Spreading the word among different co-ops helped us flourish.

Unlike electric co-ops, which are owned by

members—consumers—who receive electricity, dairy producers own Cabot Creamery. Through the co-op, over 1,200 farm operations across New England and upstate New York are guaranteed a market and fair prices.

Group Studies

In Michigan, all nine electric distribution co-ops work together to sponsor youth programs for their members’ teens from all over the state. For nearly 30 years, these co-ops have sponsored a three-day leadership conference, now called the Youth Leadership Summit (formerly known as “Electric Co-op Teen Days”), for more than 30 high school students.

Michigan co-ops also sponsor high school students to attend the annual Rural Electric Youth Tour of Washington, D.C. See pages 7 and 10 to learn more about these programs.

Connect to Co-ops

“It’s in every co-op’s DNA to serve members in the best way possible,” concludes Lowery. “That’s why co-ops remain the best type of business around.”

To find a co-op (of any kind!) near you, visit go.coop or see countrylines.com for a link to your local electric co-op.

Keepin' It Real

Busy as a bee, Simone Scarpace has been making jam with hand-picked Michigan fruit for over 30 years and decided to put it to market in 2008.

"Wee do have fun with the business," she says of their family enterprise in Bear Lake called Wee Bee Jammin'. "Wee have passion for what we do," she quips. Simone and her husband Ken enjoy traveling while making jam deliveries to their customers throughout the state, including annual trips to the U.P. to pick thimbleberries, blueberries and other wild varieties that grace Michigan's northern woods.

"Wee enjoy the people connection," she explains about why they hand-deliver about 80 percent of their jams. "We have met a lot of great people throughout our 'jam journey,' believing that we are delivering the best jam there is on the market."

From the idea to licensing, finding a kitchen, and inspection, getting our business started took about a year, Simone explains. In December 2011 they moved into their own production facility, where they will soon add a small storefront that carries their jam, along with honey and other Michigan foods, such as chocolate covered cherries, and jewelry, pottery, cards and artwork.

"We make all of our products," Simone says, and all their jams are handcrafted in small batches. When they needed a mild honey for use in one of their jam recipes, daughter Sarah studied to be a beekeeper and created a spin-off company from Wee Bee Jammin' so they could have their own supplier. Another daughter, Stefanie, a chef, helps make their products, and son K.J. helps with everything from picking berries to loading products.

By using only Michigan fruit in their low-sugar recipes, Simone says consumers are getting a high-quality jam made with pure, simple ingredients. The jams have catchy names like "Blueberry Bog" and "Saskatoon," but their hands-down bestseller is called "Toe Jam," which is made with strawberries, cherries and chunks of apples and peaches that remind them of big toes.

Deliveries are made to over 70 Michigan



Photos - Simone Scarpace

Top: Stefanie Scarpace makes "Just Peachy" preserves at the Starting Block Kitchen in Hart. **Bottom:** Ken and Simone Scarpace are the owners of Wee Bee Jammin', which specializes in making jam from Michigan fruit, and other good stuff. Visit at weebiejammin.com or call 231-510-9500.

retailers, and cities such as Atlanta, Chicago and New York City. They have an internet store at weebiejammin.com and etsy.com.

The Scarpaces also buy fruit from Michigan farmers, including raspberries from Erwin's Orchards (South Lyon), and saskatoons and blackberries from Putney Farms (Benzonia).

Saskatoons are new to Michigan, and Simone believes Wee Bee Jammin' is the first Midwestern company to make saskatoon jam. "We have worked closely with those responsible for bringing this superfruit to Michigan," she adds. "They are high in fiber

and antioxidants and are grown on specialty farms in northern Michigan."

"Wee take pride in what we do, and listen to our customers. It's hard work, but it's worth every minute," Simone adds. "What wee need is more time. Wee are Beesies!"

Tell us about your favorite, or a unique, Michigan-made product. Email czuker@meca.coop or send to: Country Lines, 2859 W. Jolly Rd., Okemos, MI 48864. Be sure to share why you like it, or a unique story to go with it.

Finding Quality Child Care For a High-tech Generation

remember when a day in Grandma’s care called for cookie-baking and board games. These days, 2-year-old Annie’s first question for me is likely to be: “Did you bring your iPad?”

Like children of every generation, our grandchildren love learning while being entertained, and few tools combine fun and learning as well as today’s technology tools. The colors, sounds, variety and instant feedback that mobile apps offer make them especially appealing to young children. What’s more, technology tools can provide powerful learning experiences, making them must-have components for educational settings.

More than a “sitter”

Even child care is now considered “early education,” where caregivers pay careful attention to early learning—even for babies. When choosing child care, today’s parents are urged to look for more than just comfort and convenience.

That’s because we now know the early years of a child’s life are a critical time when the brain is forming connections that help determine a lifetime of skills and potential, affecting the way that children think, learn and behave.

Child care that provides a loving, safe, stable and age-appropriate stimulating environment helps children enter school safe, healthy and eager to succeed. With stakes this high, parents deserve to settle for nothing less than high-quality child care that will ensure their child’s healthy physical, emotional, social and intellectual development.

Quality and stability count—right from the start

Stability is an especially important factor when it comes to choosing care for infants. That’s because babies need more sameness in their lives than the rest of us do—especially when it comes to the people who take care of them every day. The more caregivers a child has during his early years, the harder it will be for him to feel secure and to trust the people who care for his needs. And trust is important, because it

forms the basis for future relationships.

Making a lasting choice starts with parents asking themselves some questions:

What qualities are you looking for in caregivers, themselves? How important is experience, training, religious background, discipline beliefs, and flexibility?

What kind of setting are you looking for? Do you want someone to come to your home? If looking outside your home, do you prefer a small setting or a larger one? Are you looking for structured activities or for a place



Photo: iStockphoto.com

How many is too many?

The American Academy of Pediatrics (AAP) recommends that one adult should have the primary responsibility for no more than one baby under 12 months of age in any care setting. Babies need positive, consistent caregivers who learn to recognize their unique cues for hunger, distress and play. This kind of nurturing interaction contributes significantly to an infant’s social and emotional growth.

AAP guidelines for *overall* child care:

AGE	CHILD:STAFF	MAX. GROUP SIZE
Birth-24 mos.	3:1	6
25-30 mos.	4:1	8
31-35 mos.	5:1	10
3 yrs.	7:1	14
4-5 yrs.	8:1	16

that focuses mostly on free play?

What hours do you need care? What about the weekends? Do you need after-school care?

What kind of extras do you need? Do you need the center to provide transportation to and from school? What about sick child care?

Do you qualify for subsidies? Families who qualify for child care subsidies are required to use only licensed or registered child care providers, even if they are relatives or in-home babysitters.

What—realistically—can you afford, not just today, but if your budget takes a hit from future pressures?

Take the search to the cloud

Once families have answered those questions, they can research what’s available in their area and begin making calls and scheduling visits. Again, technology makes the task easier with online directories and guidelines. Michigan Great Start Connect (greatstartconnect.org) even offers downloadable checklists to help you remember what to ask and observe while you visit.

The most important person to observe, however, is *the child*. Parents will know if they’ve found the right place and person in the way caregivers interact with their child and the reaction the child gives to them. After several observations, parents should go with the option that feels right for them and their children. If at the end of your interviews none of the caregivers meet your expectations, there’s no need to settle for best of the worst. Instead, it’s time to review family values and begin the search again.

Provider-parent connections—there’s an app for that!

Once you’ve enrolled, it’s important for parents to stay connected. These days, technology offers both parents and providers more tools for staying in touch, through video streaming of activities, digital photos, blog posts, e-newsletters, or even emails and text messages throughout the day.

Turns out, there are even mobile apps, such as “Child Care Daily” and “Tadpoles Day Care” that help keep parents and providers connected. These apps can offer added peace-of-mind while allowing parents to “watch” their child’s daily activities on their smartphone or iPad.

Assuming, of course, parents can wrestle the devices from their kids when they say goodbye.

The Nature of Things

For nature writer Jerry Dennis, curiosity is the drive.

“Curiosity killed the cat,” as the old saying goes, but for Jerry Dennis it’s a driving force.

His curiosity and way with words has established the Traverse City-based author as one of the nation’s outstanding nature and outdoor writers, with a growing list of published books and magazine articles. His articles have appeared in the *Smithsonian*, *Audubon* and *National Geographic* magazines, as well as the *New York Times*.

His latest book, “The Windward Shore: A Winter on the Great Lakes,” is published by the University of Michigan Press. It resulted from an accident—an ill-timed leap for a basketball in a “skins and shirts” game which ended with an injured knee. Repair required surgery—and a long period of rest and recovery.

That enforced down-time allowed him to begin a long-planned book related to his favorite subject, the Great Lakes. This time his focus turned to the coastal shorelines of lakes Michigan and Superior. The result? A gentle, thoughtful and enjoyable look at another facet of Michigan’s natural world.

During his recovery, thanks to the generous offers of friends, he isolated himself at a lakeshore lodge in the Leelanau Peninsula and a cabin on Superior’s shore. His curiosity and quiet observations about the very nature of a shoreline, and the water, wind, land and geology that make it unique, led to this latest in books.

Human use and development of the shorelines has not always been gentle or wise, and Dennis worries over these accrued abuses.

“The older I get and the more I study, travel and talk to people, the more I realize how complex the Great Lakes are—and that the problems that face them are complex too,” he said. “It was kind of an important moment when I finally allowed myself to realize how complex it is. Yet I still get excited to be on or near the Great Lakes.”

It was curiosity that led to several of the author’s earlier books on subjects as varied as: a bird that flies into waterfalls to feed; hiking with a fishing friend far into a remote stream area only to discover a man and woman fly-fishing in the nude (one of the short stories in his book, “The River Home”); paddling a canoe with a friend into the north country woods and wilds; or talking his way into crewing on a yacht in the Chicago to Mackinac race. On that latter adventure, curiosity did demand a penalty for pushing it.

“I was determined to get on one of those boats to know what it was like to be in that race, even though I’m not a sailor. I naively went down to the Chicago Yacht Club before the race and asked for a spot on a boat. Of course nobody wanted a greenhorn so I had a heck of a time getting on; but luckily, a half-hour before the race, one sailor’s wife fell and broke a leg. They needed a replacement in a short time; I happened to be in the right place at the right time.

“I did get terribly seasick,” he laughed, “and after a few hours there may have been discussions about throwing me overboard. But I recovered and we did fairly well by placing in the top half of racers.”

Dennis and his wife Gail live in a 140-year-old farmhouse on the Mission Peninsula in Grand Traverse Bay; their two sons are now grown and on their own.

He remains involved locally in the effort to remove old power dams on the Boardman River, in nature and educational lecturing, and of course, in letting his curiosity lead him to his next book—planned for release in 2012.

Jerry Dennis is a man who loves the Great Lakes and listens to his curiosity when it speaks to him. We who enjoy a good read are glad he does.



Photo—Gail Dennis

Books by Jerry Dennis

“The Living Great Lakes”

“Leelanau: A Portrait Of Place In Photography and Text”

“From a Wooden Canoe”

“The River Home”

“The Bird In The Waterfall”

“A Place On The Water”

“It’s Raining Frogs And Fishes”

“Canoeing Michigan’s Rivers”

Don Ingle is an avid outdoorsman and award-winning outdoors writer that submits regularly for Country Lines.





Photos - 831creative.com

MEALS UNDER \$10

Eating on a budget doesn't have to mean giving up flavor. Try these savory, stress-free recipes and put dinner on the table for less! Find hundreds more recipes at countrylines.com.

Caprese Pizza

- 1 T. olive oil
- 3 T. pizza sauce
- 1 pre-made whole wheat or white pizza crust (12-14 ounce size)
- 8 ozs. fresh mozzarella cheese
- 2 T. balsamic vinegar
- 3/4 of 12-oz. jar of diced tomatoes (with olive oil and garlic)
- 2 T. chopped, fresh basil leaves

Preheat oven to 425°. Mix olive oil with pizza sauce and spread onto pizza crust. Cut mozzarella cheese into 1/4-in.-thick slices. Place mozzarella in a small bowl and coat with balsamic vinegar. Chop tomato into 1/4-in. pieces and lay on a paper towel to soak up excess liquid.

Arrange tomatoes in concentric circles around the crust. Sprinkle the basil and lay

the mozzarella pieces on top, making sure all ingredients are evenly distributed around the crust. Bake for 12-15 minutes or until desired crispness.

Chicken Parmesan (pictured above)

- 1 large egg (or egg white)
- 1 c. Italian-seasoned bread crumbs
- 4 boneless, skinless chicken breasts (about 1 lb.)
- 2 T. olive oil
- 1 (24-oz.) jar spaghetti sauce
- 1 c. parmesan cheese
- 1 c. mozzarella cheese

Preheat oven to 350°. Heat skillet with olive oil over medium heat. Place egg white in bowl. On a cutting board or flat surface, spread bread crumbs. Take each chicken breast, dip into egg and coat with bread crumbs. Place chicken in skillet and cook on each side 2-3 minutes or until browning. Remove and place into baking pan. Cover with spaghetti sauce. Add cheese. Bake for 20 minutes or until cheese is fully melted. While baking, cook spaghetti noodles until done. Serve the Chicken Parmesan on a bed of spaghetti noodles. Sprinkle with parmesan cheese, if desired. Serves 4.

Meet County Lines' new recipe editor, Christin Russman!

"I really love to cook, bake and experiment in the kitchen. I've been refining my craft over the past few years and friends have suggested that I start a blog so they could find my recipes. So a year ago, I did just that. It's busychickrecipes.com. In it, I create original, healthy recipes for busy people. If I could, my job would be to travel around the world, experiencing different cultures and food!

I am also lead instructor at Specs Howard School of Media Arts in Farmington Hills and a freelance videographer and editor. I am newly married and have a cat named Chloe. I'm a salsa dancer in my spare time, and I'm learning Japanese."



Chicken Quesadillas

2 (12.5-oz.) cans shredded chicken
2 T. water
1 taco seasoning packet (1.25 ounces)
1 c. "pico de gallo" style salsa, or chunky salsa
4 flour tortillas
1 c. shredded Mexican cheese
Preheat oven to 350°. In medium skillet over medium heat, cook chicken until warm. Add water, taco seasoning and salsa. Stir together. On a baking sheet covered in aluminum foil, place two tortillas. Scoop chicken mixture onto tortillas and spread evenly. Sprinkle with cheese and top with the other tortillas. Bake for 5-7 minutes or until cheese is fully melted. Cut with pizza cutter into small triangles. Makes 2 quesadillas.

Turkey Chili

1 pkg. (1.5 lbs.) lean, ground turkey meat
1/2 small white onion, diced (about 1/2 cup)
2 cans (14.5-oz.) tomato sauce
1 can (14.5-oz.) diced tomatoes
1 can (4.5-oz.) diced or chopped green chilies
1 (14.5-oz.) can chili beans
1 pkg. (1.25 ounces) chili seasoning mix
Brown the turkey meat and onion in a large skillet over medium heat. Drain. Return meat to pan and add the tomato sauce, diced tomatoes, green chilies, beans, and chili seasoning mix. Reduce heat to medium and let simmer. Top with sour cream and cheese, if desired.

Red Beans & Rice with Sausage

1 c. beef broth or bouillon
1/3 c. diced celery
1/3 c. chopped onion
1 clove minced garlic
1 can (14.5-oz.) petite diced tomatoes, undrained
1 can (15.5-oz.) chili beans
1/3 c. diced green pepper
1 t. oregano
1/2 t. cumin
1/4 t. pepper
3-6 drops Tabasco green pepper sauce (optional)
1 c. Minute Rice®, uncooked
1 14-16 oz. package smoked sausage, cut crosswise into 1/2-inch slices

In large non-stick skillet, bring broth to a boil. Add celery, onion and garlic. Cover, reduce heat, and simmer 5 minutes. Add remaining ingredients; mix well. Cover and simmer until liquid is absorbed, about 12-15 minutes.

Mary Ellen Sequin-Adomat, Traverse City

Turkey and Dressing Roll-ups

8 medium slices deli turkey
1 box chicken or turkey Stove Top Stuffing®
1 can cream of mushroom soup
1/4 c. milk
Prepare the stuffing as directed on the box; cool. Lay turkey slices on counter, pat dressing evenly on each slice and roll up. Put into a 8x8-inch glass baking dish. Mix soup and milk together and pour over roll-ups. Heat covered in microwave 3-4 minutes, or in oven at 350° until warm. Serve with dinner rolls. 4-6 servings.

Patty Young, Sterling Heights

Harvest Supper

1-1/2 lbs. smoked sausage
32 ozs. sauerkraut
1 small onion, chopped
3 apples, sliced
4 med. potatoes, sliced
1/2 c. water
2 t. sugar
Mix all but the sausage together in a large skillet, cover and simmer for 45 minutes. Place the sausage on top, cover and simmer 15 minutes more. Serves 4-6.

Shirley Dunbar, Constantine

Meal-In-One Ham Casserole

2 c. cubed ham
1 c. cooked rice
1 can cream of mushroom soup
1 c. chopped celery, parboiled and drained

1 c. mayonnaise
1 T. grated onion
1 T. lemon juice
3 hard boiled eggs, chopped
1 c. frozen mixed vegetables
1 c. crushed corn flakes
Mix together all but the corn flakes and place in a well-greased 2-quart casserole dish. Sprinkle corn flakes over top. Bake at 375° for 45 minutes. Serves 8.

Emma Jean Bowerman, Lake Isabella

Taco Lasagna

1 lb. burger
1 small onion
1 can refried beans
1 can black beans, drained
1 can corn, drained
1 packet taco seasoning
1 1/2 c. salsa
8-oz. shredded cheddar cheese
9 lasagna noodles
Brown burger with onion; add refried beans, seasoning and salsa. At the same time, cook lasagna noodles. Using a cake pan, begin by putting three lasagna noodles in the bottom. Top with one-third each of meat mixture, black beans and corn and a little of the cheese. Repeat two more times, ending with putting more cheese on the top. Bake for 40 minutes at 350°, or until cheese on top begins to brown.

Beth DeVos, Reed City

NEW THIS YEAR! Contributors whose recipes we print in 2012 will be entered in a drawing. We'll draw one winner in December and pay their January 2013 electric bill (up to \$200) as a prize.

Thanks to all who sent in recipes! Upcoming: Please send in your **MEATLESS MEALS** recipes by Jan. 10 and **MEDITERRANEAN** recipes by Feb. 10. Mail to: Country Lines Recipes, 2859 W. Jolly Rd., Okemos, MI 48864; or email recipes@countrylines.com.

Turkey Chili



We're Part of a National Safety Effort

Great Lakes Energy's participation in Rural Electric Safety Achievement Program (RESAP) inspections at all its locations last fall is another example of how your co-op works to maintain an excellent safety record.

The National Rural Electric Cooperative Association, (NRECA), the national service organization for electric co-ops, administers the RESAP process for its member co-ops.

The inspection process helps to pinpoint areas where employees can continue to make their work environment safer, according to Tim Hartwick, GLE director of loss control and training.

Great Lakes Energy employees from several departments perform comprehensive inspections every three years, joined by representatives from GLE's liability insurance carrier and the Michigan Electric Cooperative Association (MECA), the co-op's statewide service organization. The team looks for hazards in all areas at GLE locations during the week-long inspection process. They also conduct random on-the-spot questioning of employees to gauge the overall safety knowledge and readiness of GLE staff.

Hartwick shared a summary of the inspection team's most recent findings with executive staff and the co-op's board of directors. Overall, the findings affirmed that Great Lakes Energy operates in a safe manner and identified areas for improvement that the co-op will focus on in 2012.

He emphasized that the three-year assessments are simply one piece of the puzzle to assessing and improving safety measures. Great Lakes Energy employees work on safety every day.

Lineworkers, for example, hold "tail-boarding" sessions each morning to discuss the day's work and check their vehicles, tools and equipment to make certain everything



Photo - Linda Kotzian



Photo - Dave Guzniczak

Safety materials, lineworkers' equipment and much more were part of a thorough check of Great Lakes Energy facilities performed last fall by a team of safety inspectors.

operates correctly.

Office workers are expected to keep their work areas neat and free of obstructions and fire hazards.

All employees receive regular safety training on the safe use of operations equipment and office fire extinguishers, CPR and first aid training, reviews of disaster and evacuation

plans and other topics geared to specific employee groups.

Besides the training, Hartwick oversees annual self-assessments in each location that emulate RESAP inspections. Supervisors and loss control staff also conduct spontaneous spot-checks of work practices, vehicles and equipment.

"The idea," Hartwick explains, "is to make safety awareness and improvement a continuous process and not just something that occurs once every three years."

In addition to constant training and awareness measures, the RESAP process requires detailed documentation. In early 2011, CEO Steve Boeckman started the process when he submitted a statement of leadership commitment to safety. Following that, GLE's Board of Directors adopted a resolution endorsing the program. In November, directors played an active part in the co-op's safety excellence crusade by reviewing and commenting on the 2012 safety goals.

Loss control employees keep detailed records on every training session and routine inspection in addition to annual and three-year RESAP inspections. Employees, too, must submit records every time they inspect trucks, tools and equipment, sustain injuries or accidents, or discover areas of safety concern.

Great Lakes Energy employees, management and directors all view safety achievement as another important part of serving the co-op's members. A safe working environment promotes public safety, limits personal injury and property damage expenses, increases reliability with tools and equipment in safe working order, and boosts the morale of employees who serve GLE members.

— Linda Kotzian



Like Us



Follow Us



Watch Us

If you're a fan of social media, you may already know that Great Lakes Energy has a page on Facebook (facebook.com/greatlakesenergy) and a Twitter account (twitter.com/GLE-Cooperative).

But did you know that we created our own YouTube channel this year? View it at youtube.com/greatlakesenergy.

Choose from among 20 videos now posted on the site, including:

- Arbor Day celebration at a school (starring vegetation management staff)
- Teen Days (now known as Youth Leadership Summit) footage
- GLE's hotline safety demo
- Lineworker training
- GLE's 2011 fall Energy Seminar
- The story of GLE (as shown at new employee orientation meetings).

Besides being posted on GLE's YouTube channel, the videos appear as links in some of our Facebook and Twitter postings and in e-newsletters generally sent out monthly.

Posts to our Facebook and Twitter pages appear each regular workday. They contain energy efficiency tips and news about your co-op, as well as links to information on products and services offered, including Energy Optimization programs. Staff monitoring the pages respond to questions and comments during regular working hours (8 a.m. to 5 p.m., Monday through Friday).

Besides information, YouTube videos give you an inside, personal look at GLE's employees and the work they do while looking out for you.

Check us out today: Like us on Facebook, follow us on Twitter, or watch us on YouTube. Join the conversation with GLE's growing social crowd!



GLE Director Honored

Great Lakes Energy director Robert Kran of Free Soil (right) received a certificate of achievement from the National Rural Electric Cooperative Association (NRECA) for successfully completing its Credentialed Cooperative Director program. Kran is shown being congratulated by GLE board chairman Robert Thurow.

As the national service organization for electric co-ops, NRECA offers professional development programs for local electric co-op directors. These educational programs are designed "to prepare directors to make wise business decisions in the boardroom."

What's Your Number?

We'd like to know. During a power outage, it's important for Great Lakes Energy to have your current phone number on record. Many people are dropping their landline phones and using cell phones exclusively. If you're one of them, we want to know.

Help us help you by having your up-to-date phone number in our computer system.

With the proper information on file, you can easily report your power outage through our automated system. In addition, we can send automated calls to your phone to ask if your power is restored.

Please be assured that Great Lakes Energy will never sell or rent your phone number or personal information to outside companies.

Contact us at 888-485-2537, ext. 8924, to update your phone number today.

Notice to Members of Great Lakes Energy Cooperative Case No. U-15817

2010 Renewable Energy Plan Annual Report Summary

The Michigan Public Service Commission (MPSC) requires all Michigan electric utilities to get approximately 2 percent of their power supply from renewable sources by 2012 and increasing to 10 percent by 2015.

Under this requirement, Great Lakes Energy Cooperative submits an annual report to the MPSC regarding its Renewable Energy Plan. In 2010, Wolverine Power Cooperative, Inc., Great Lakes Energy's wholesale power supplier, generated 143,821 megawatt hours (MWh) of renewable electricity from its Harvest Wind Farm and Thunder Bay Hydro. Of that, 116,470 MWh of renewable energy were banked on behalf of Wolverine's distribution co-op members, including Great Lakes Energy. Wolverine will continue to generate renewable energy and bank unused renewable energy credits (RECs) for future use and compliance with statutory renewable portfolio standard requirements on behalf of its members.

A full copy of the cooperative's Renewable Energy Plan annual report that was filed with the MPSC is available on the cooperative's website at gtlakes.com or by request at any of the cooperative's offices.

Midwest Energy Cooperative Joins Wolverine

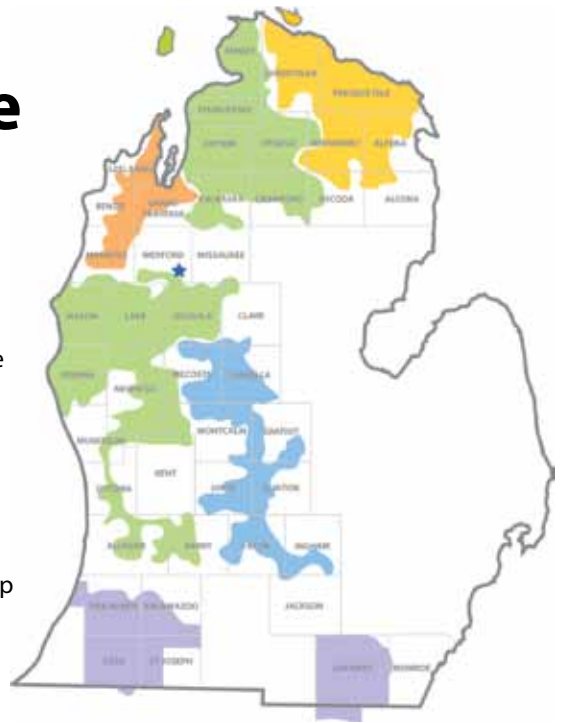
Midwest Energy Cooperative became the seventh member of the Wolverine Power Cooperative family this past November. The boards of directors of Midwest and Wolverine approved Midwest's membership agreement, and regulatory approvals have been obtained.

As with Wolverine's existing electric distribution co-op members—Cherryland Electric, Great Lakes Energy, HomeWorks Tri-County Electric and Presque Isle Electric & Gas Co-op—Midwest is receiving power supply from Wolverine under a contract extending through the year 2050. Midwest also has two seats on the Wolverine board of directors, as do all Wolverine members.

"We are looking forward to a long-term relationship with the Midwest board and staff, and the cooperative's nearly 40,000 customers," says Eric Baker, president and CEO of Wolverine. "Serving a larger membership with the addition of Midwest will allow Wolverine broader access to new generation sources and opportunities while minimizing rate impacts to all co-op members."

Midwest serves southern counties in the

- Cherryland Electric Cooperative
- Great Lakes Energy
- HomeWorks Tri-County Electric Cooperative
- Midwest Energy Cooperative
- Presque Isle Electric & Gas Co-op
- ★ Wolverine Power Cooperative



Lower Peninsula, including Van Buren, Kalamazoo, Cass and St. Joseph. The cooperative's service area also includes the majority of Lenawee County and extends into Monroe County, Ohio and Indiana. Midwest has just over 80 employees reporting to offices in Cassopolis, Adrian and Paw Paw.

With the addition of Midwest, Wolverine now serves six of the seven electric cooperatives located in the Lower Peninsula.

"Sales to Midwest will account for a nearly

25 percent increase in our total sales," Baker says. "Additionally, our existing distribution members continue to experience growth, setting several new energy records in 2011."

Wolverine's Energy Control Center recorded three new records for Cherryland, Great Lakes, HomeWorks and Presque Isle in 2011, including a new all-time peak of 515 megawatts (MW) for the combined electric loads of these cooperatives, surpassing the previous all-time peak of 490 MW set in August 2007.

WCEV Update

Wolverine Prepping to Seek Bids for Power Plant Components

Wolverine Power Cooperative continues to prepare formal bid packages for key components of the Wolverine Clean Energy Venture (WCEV) power plant project, including boilers, turbines and foundations. The cooperative expects to begin seeking bids from potential vendors early this year.

"We have seen great interest in the project from several of the industry's leading construction firms since the Michigan Department of Environmental Quality approved the final air quality permit in June 2011," says Dan DeCoeur, vice president of power supply for Wolverine.

Companies interested in working with Wolverine on the proposed power plant are



A rendering of the proposed Wolverine Clean Energy Venture power plant.

encouraged to provide contact information on the cooperative's website for the project at wolverinecleanenergy.com.

Under state and federal law, Wolverine has 18 months from the date the final air permit was issued to begin work at the project site. If a decision is made to proceed with the

project, fall 2012 is the earliest construction would begin.

The air quality permit allows for construction of two circulating fluidized bed units, each capable of generating 300 megawatts of electricity using a fuel mix of coal, petroleum coke and biomass.

Heating and Cooling: Weigh Your Options

Whether it's a heat pump or portable air conditioner, you have many energy-efficient choices when replacing your heating and cooling system.

It can make economic, environmental and lifestyle sense to switch to an entirely different type of heating source for your home. The cost of fuels, such as natural gas, propane, heating oil and electricity, have shifted dramatically over the past decade. Many new heating systems last 20 years or more, so with wide variations in fuel costs, long-term estimated operating costs and paybacks are not always reliable.

Electricity prices are the most stable and will probably continue that way. For homes heated with electricity, air-source or geothermal heat pumps make good sense because they can both heat and cool efficiently.

A standard air-source heat pump is basically a central air conditioner with a few extra parts. The outdoor unit looks exactly the same as a central air conditioner. It is called a heat pump because it pumps heat out of your house (cooling mode) or into your house (heating mode) to or from the outdoor air around the outdoor compressor/condenser unit.

Geothermal heat pumps also provide the highest efficiency and lowest year-round utility bills. While geothermal heat pumps have boasted much higher initial installation costs (due to the need to place loops, or tubing, to run through the ground or to a well or pond), the federal stimulus bill provides consumers (through the end of 2016) a 30 percent tax credit on the cost of putting in a geothermal heat pump system, which makes them much more affordable.

The primary advantage of installing a heat pump of any kind is they can be used year-round for both heating and cooling. This provides year-round savings and shortens the payback period. In contrast, a super-efficient furnace gets used only during winter and a central air conditioner only during summer.

I also use a portable heat pump to heat and



A super-efficient geothermal heat pump, with and without the front cover. Notice the large air cleaner and water fittings for also heating hot water.

cool my own home/office for year-round savings. It produces 14,000 Btu per hour (Btuh) of cooling and 11,000 Btuh of heating. This is much more heat output than a standard electric space heater using the same amount of electricity during winter.

The efficiency of a portable air conditioner is similar to a window air conditioner. Although this is less efficient than the newest central air conditioners, it can still save you money. By keeping just one or two rooms comfortably cool with clean air, you can set your central thermostat higher and save electricity overall. Since it's on castors, you can use it in the dining room for dinner, roll it into the living room for TV, and so on.

Most operate on standard 120-volt electricity, so they can be plugged into any wall outlet near a window.

A portable air conditioner/heat pump operates similar to a typical window unit. The internal rotary compressor, evaporator and condenser function in the same way. The main difference is that it is on castors and rests on the floor.

When choosing a heating and cooling system, there are other intangible factors to consider. Every type of system requires some maintenance, which can increase the overall

costs. A heat pump requires about the same amount of service as an air conditioner.

Send your inquiry to James Dulley, *Michigan Country Lines*, 6906 Royalgreen Dr., Cincinnati, OH 45244 or visitdulley.com.

**Turn Your House Into
A Power Plant.
Save Up To \$500.**



Just like trees, geothermal heating and cooling systems produce energy from the sun and the earth. Learn how you can **cut heating bills** by up to 70%, and generate a **discount coupon** worth up to \$500, at earthcomfort.com. This is on top of a **30% federal tax credit**. Find a dealer and invest in lower heating bills now.

earthcomfort.com

Michigan Geothermal Energy Association

James Dulley is a nationally recognized mechanical engineer writing about home energy issues for the National Rural Electric Cooperative Association.



NEW! Programs to Help Control Your Electric Use

This is the time of year when it's nice to bring things back into balance. All that yuletide and holiday fun can be hectic and expensive, after all. Well, good news! There are now rebates and incentives available from your cooperative to help manage your electric bill.

Your cooperative is part of a collaborative group of Michigan electricity providers that offers Energy Optimization programs that serve valuable members, like you. These programs help reward your energy-saving actions.

New year. New programs. New ways to save.

Beginning in 2012, there will be new and improved Energy Optimization programs from your cooperative. These updated pro-

grams will help you get more from your cooperative—more comfort, more savings and more living. Plus, you'll gain understanding and information on how to better

manage your energy use.

An energy efficient home also saves you time and can resolve common problems like mold, ice dams and drafts. Energy Optimization programs can make your home more durable and resistant to the elements, too.

Check it out

The next time you visit your cooperative's office, ask what Energy Optimization programs are available to you. You can also visit michigan-energy.com or call 877-296-4319 for more details.

You must be a Michigan resident and electric co-op member to be eligible for these programs. Other restrictions may apply. Visit michigan-energy.org for a complete list of participating utilities.

Great Lakes Energy will offer:

- Home energy audits
- Business programs
- Weatherization
- Appliance recycling
- Farm services
- Appliance rebates
- HVAC rebates



Better ways to manage your electric use.
New year. New opportunities. Watch for new and improved energy saving programs in 2012. From income specific home weatherization to rebates on appliances, you'll love the rebates and incentives coming your way.

something NEW

LEARN MORE
Online: michigan-energy.org Phone: 877.296.4319

Energy Optimization programs and incentives are applicable to Michigan service locations only. Other restrictions may apply. For a complete list of participating utilities, visit michigan-energy.org.



Photo © iStockPhoto.com

GARAGE DOOR SAFETY:

An Open and Shut Case

Garage doors add convenience and security, but should be inspected regularly.

Automatic garage doors may be a routine part of leaving and arriving home, but you should be aware of the potential for injury. Underwriters Laboratories, Inc., recommends these tips to make safety an open and shut case when it comes to your home's garage:

■ **Always keep automatic garage doors fully open or fully closed.** Some folks may leave a small opening at the bottom for pets to get in and out for food or shade. But a small opening could also be an invitation for

a child to try to crawl through and get stuck. Another push of the button could send the heavy door down—causing injury—instead of bringing the door up when trying to free anyone stuck underneath. If you encounter someone stuck in an automatic door, call your local fire department.

■ **Read instructions on how to operate and maintain your garage door properly.** Check your automatic door monthly to be sure safety precautions are working. Many garage doors boast a safety feature that trig-

gers an automatic reversal if anything is encountered while closing. To check, place a 1.5-inch object (like a flat 2x4) in the path of the door to make sure the door correctly reverses when contact is made. Instructions should also advise on maintaining a properly balanced door. Call a qualified repair company for service or maintenance.

■ **Do not allow children to operate a garage door.** It may seem like a harmless, simple task to allow children to push the garage opener. But activating heavy equipment should be taken seriously.

■ **Avoid walking under a door that is opening or closing.** You never know when a malfunction may take place. Steer clear of a moving door.

■ **Know when and how to use the emergency release.** You'll find a cord with a handle hanging along the track of your garage door. Always use caution when using this release, and only use it when the door is fully closed.

An automatic garage door opener is a common convenience powered by electricity. Just as electricity demands safety and respect, so does the equipment it operates.

— Kelly Trapnell

Share Your Story ...



In 2012, Great Lakes Energy will celebrate 75 years of service. In 1937, electricity was first brought to many parts of our rural service area. Over the years, electric service was expanded to cover parts of 26 counties in what we now call Great Lakes Energy.

It was a monumental time for rural farms and families. We want to hear your stories and memories about that time. Photos and other historical artifacts are also welcome. The information may be used in a future issue of *Michigan Country Lines* or other co-op publication.

Please share your story by writing to: Great Lakes Energy, Communications Dept, P.O. Box 70, Boyne City, MI 49712 or email glenergy@glenergy.com.



A Life of Curveballs

Life hits some people harder than others. You can say that the trials of Job build character and resilience, test faith, or are simply the cost of living. But sometimes it seems the pain is unfairly dealt.

I was a hospital patient in the past year, enjoying the relative peace of a weekend stay, when my quiet space was shattered as the other bed in my room became suddenly occupied by a large, bearded man with a booming voice. I'll call him Roger. He looked like a gray-haired Santa Claus. He was there because he had been in a car accident and was experiencing blackouts. His daughter had brought him to the emergency room, then left him.

He was attended to by a half-dozen orderlies and nurses, who arranged him on the bed, hooked up monitors to track his vital signs and drew the privacy curtain between us. Privacy, though, was not what Roger got. As you may know, there's not much privacy in a shared hospital room. You will share more intimate details there with a complete stranger than you would want to share with your family.

We talked a bit, and then a nurse and a social worker showed up to get details about his current health issues. Of course, I heard everything.

Roger had a recent history of feeling faint, but more so since the accident, which totaled his car.

He had a bad back, the result of previous car accidents and a work life of physical labor.

His weight problem was obvious.

He had diabetes and was trying to control it by watching his diet.

He got winded easily because he had reduced lung capacity. He smoked. He was trying to stop.

Walking was difficult without a cane because of the arthritis in both of his knees. And one leg was shorter than the other.

From time to time, stomach pain flared up. He chewed Tums.

His blood pressure was too high. He

was on a statin medication to bring his bad cholesterol level down.

He was a recovering alcoholic and had used drugs.

He had joined the Army at the end of the Vietnam War. Afterwards, he worked on Great Lakes ships, then as a carpenter. Now his health prevented him from working. He's 56.

He was on the verge of divorce, still living with his wife, but no longer talking to her. His high-school-age son was living in the house, but his wife let the boy drop out of school because, he quotes her: "He doesn't like it. Larry just has to be allowed to be Larry." From the way Roger says this, you know this bothers him more than all the troubles he has.

Life was throwing Roger more curveballs and sliders than Justin Verlander. And Roger wasn't a good hitter. He was striking out.

The son visited later in the afternoon. Larry is as tall as his father, but thin, with long hair. He looks like a typical teen and I wanted to yell "Go back to school!" when he left, because without an education he's starting out with the count 0-2 against the toughest pitcher in the game. I wanted to say "Look at your dad. That's you in 40 years." I'm sure his dad would have agreed.

I left the hospital the day after Roger got there, and it's not likely I'll ever see him again. I like to think that he got healthy for a while, got to enjoy using the strength his body once had, got on good terms with his wife and daughter, and saw his son go back to school. But I have doubts. Life isn't a fairy tale.

Roger isn't a bad person. You can't say he deserves his misfortunes. A few bad choices early on, confounded by heredity, circumstances and a bad economy, and any one of us could be Roger.

I thought later that Roger was lucky to have a health care system available that could treat him. Then I wondered who was paying the bills.



Photo - iStockphoto.com

Mike Buda is editor emeritus of Country Lines. Email Mike at mbuda@countrylines.com or comment on his columns at countrylines.com/column/ramblings



Now is the best time to buy a...

Designer METAL ROOF!

Installing All Winter!

Want to Win a Metal Roof?
Go online to bit.ly/winamr for your chance to win an American Metal Roof**

**See Rules & Regulations online



American Metal Roofs
Made in America

Get A New Permanent Roof For As Low As **\$241**/Month*
Apply Online Today For Our Blue Sky Financing Program

- ✓ Your Last Roof - Never Rusts
- ✓ Snow Slides Off (watch online)
- ✓ 120mph Wind Resistant
- ✓ Year Round Energy Savings
- ✓ Free, No Obligation Consultation



HeatBarrier Reflective Insulation XP

Learn online how this innovative product can prevent heat loss in your home, lowering your heating bills.

Showcase Homes Save!

10 homes wanted

We need your home to showcase our beautiful American Metal Roof. Homes selected will earn drastic savings off the investment of your Metal Roof in exchange for the use of your home for advertising purposes.

Call Jenn for details to qualify

888-221-1869



See our Photo Gallery and Watch the Snow Sliding Video at www.AmericanMetalRoofs.com

Visit the American Metal Roofs Showrooms at 6140 Taylor Dr, Flint, MI 48507 and 1875 Lansing Rd, Charlotte, MI 48813

888-221-1869



Find us on Facebook fb.me/AMRmichigan

*Promotion may not be combined with any other offers. Some restrictions apply. Call for details. Promotion is based on approved credit. Applies to purchases made on American Metal Roofs consumer credit program. \$241 monthly payment calculations based on a \$25,000 purchase at 9.99% APR for 20 years. Your interest may be deductible. Consult a tax advisor.

MI Contractor License #2102158513



gtlakes.com

facebook.com/greatlakesenergy

Thank you so much for giving!



The many local charities and community groups helped by the People Fund are grateful to the Great Lakes Energy members who make this grant program possible through their average monthly (50 cents) contributions.

"Thank you so much for this generous grant. You are going to help us assist local patients in fighting a difficult and costly disease. Your grant will go to work immediately saving lives."

— Christie Perdue, Otsego Memorial Hospital Foundation's Diabetes Self-Management Program, Gaylord

"Thank you for your donation for this program that encourages preteen girls to develop self-respect and healthy lifestyles though running and curriculum lessons."

— Cheryl Griffin, Girls on the Run Program in Kalkaska, Missaukee, Mason, Lake, Manistee, Wexford, Newaygo, Oceana and Mecosta counties, District Health Dept. # 10

"Without grant assistance such as the People Fund, our Food 4 Kids Backpack program would not be making a difference in the lives of children in our area. The Great Lakes Energy People Fund is such a wonderful assistance to so many organizations in our area serving a variety of needs. Thank you for being there."

— Kathy Hart, The Manna Food Project, Harbor Springs



Girls on the Run program



Friendship Centers of Emmet County

"We are very thankful for your support and continue to encourage our staff and volunteers who use Great Lakes Energy to use your billing round-up program."

— Amanda Gaulke, Wings Home for hospice patients, Allegan

"Thank you so much for your part in making the media center equipment available at the library, and what it will mean to all of the community involved. We already are getting many people in to take advantage of our state-of-the-art equipment."

— Lilas VanScoyoc, Evart Public Library

Help the People Fund expand to meet our communities' growing needs by allowing us to round up your monthly electric bill to the next dollar. Your small share adds up to a sizeable sum when we combine it with other Great Lakes Energy member contributions—more than \$2.23 million since 1999.

Three easy ways to sign up: **BY PHONE:** Call 888-485-2537 **ONLINE:** Visit gtlakes.com ("Your Community" tab) **BY MAIL:** Fill out the card on the back of the attached People Fund Annual Report and return with your bill payment.