

A Service of **Cherryland Electric Cooperative**

March 2013

Michigan

COUNTRY LINES



Making a Difference

**SPECIAL
GARDENING
EDITION**

2 Lessons
Learned

3 Meet Our New
Grassroots Advocate

6 A Book About Your
Co-op's History

Hurry, this event ends on
MARCH 31, 2013!

Some choices are clear.



WaterFurnace Geothermal

- Even, luxurious comfort
- Savings up to 70% on bills
- Uses the clean, renewable energy in your backyard
- Provides heating, cooling & hot water
- 25 year system life¹

Fossil Fuel Furnace

- Hot to cold swings
- Volatile fossil fuel prices
- Relies on the combustion of fossil fuels
- Provides heating, heating & more heating
- 15 year system life

Life is full of difficult choices, but choosing a WaterFurnace geothermal heat pump isn't one of them. WaterFurnace can save you up to 70% on heating, cooling & hot water by capturing the clean, renewable energy in your backyard. Plus, for a limited time, we're offering **instant rebates** on any of three geothermal packages. Each is tailored to fit your needs - so every choice is perfect. And with an additional **30% federal tax credit**, there's never been a better time to choose WaterFurnace. Visit your local WaterFurnace dealer for more information.

\$2,500

Instant Rebate

Ultimate Comfort Package

Includes our variable capacity 7 Series—the most efficient unit on the market—installation accessories and choice of communicating thermostat and/or zoning system.

\$1,500

Instant Rebate

Essential Comfort Package

Includes the most efficient dual capacity unit on the market—5 Series 500A11 with IntelliStart, AXB controls, installation accessories and choice of communicating thermostat and/or zoning system.

\$1,000

Instant Rebate

Geothermal Upgrade Package

For replacement of existing geothermal systems. Includes the most efficient dual capacity unit on the market—5 Series 500A11 with IntelliStart and AXB controls.

The
Perfect Choice
Savings Event

Your Local WaterFurnace Dealer

Bad Axe
B & D Htg
(989) 269-5280

Berrien Springs
WaterFurnace Michiana
(269) 473-5667

Big Rapids
Stratz Htg & Clg
(231) 796-3717

Caro
AllTemp Comfort, Inc.
(866) 844-HEAT (4328)

Carsonville
Certified Temperature
Innovations
(810) 300-7748

Charlotte
Applegate Home Comfort
(517) 541-8013

Clifford
Orton Refrigeration & Htg
(989) 761-7691

DeWitt
S & J Htg & Clg
(517) 669-3705

Elk Rapids
K & K Htg & Clg
(231) 264-8323

Gaylord
Family Htg & Clg
(989) 732-8099

Grand Rapids
Montgomery Htg & Clg
(616) 459-0261

Total Comfort
Resource, LLC
(616) 406-3182

Hart/Ludington
Adams Htg & Clg
(231) 873-2665

Indian River
M & M Plmb, Htg & Clg
(231) 238-7201

Ionia
Home Experts
(800) 457-4554

Jackson
Comfort 1 Htg/
Lenawee Htg
(517) 764-1500

Kalkaska
Kalkaska Plmb & Htg
(231) 258-3588

Kincheloe
Great Lakes Services Inc.
(906) 632-5543

Lapeer
Porter & Heckman
(800) 445-4328

Manistigue
Hoholik Enterprises
(906) 341-5065

Marquette
Swick Plmb & Htg
(906) 228-3400

Mount Pleasant
Walton's Htg & Clg
(989) 772-4822

Muskegon
Adams Htg & Clg
(231) 873-2665

Onaway
Standard Htg
(989) 733-8309

Palms
Lakeshore Improvements
(989) 864-3833

Traverse City
Geofurnace Htg & Clg
(231) 943-1000

D&W Mechanical
(231) 941-1215

Webberville
Applegate Home Comfort
(800) 377-2272



waterfurnace.com/PerfectChoice

¹According to ASHRAE estimate. Rebate available only to residential customers through participating dealers. WaterFurnace is a registered trademark of WaterFurnace International, Inc.

Editor
Gail Knudtson

Associate Editor
Doug Snitgen

Design Editor
Cindy Zuker

Publisher
**Michigan Electric
Cooperative
Association**



12



15



24

DEPARTMENTS

4 Readers' Pages
Letters, mystery photo,
Youth Leadership
Council member

16 Home Cooking
Brunch recipes
*Christin McKamey &
Our readers*

20 Wolverine Power*
Improving transmission
reliability a priority
Nancy Tanner

22 Safety
Watch out for downed
power lines!

COLUMNS

12 Gardening
The garden "buddy
system"
Kris Wetherbee

14 Family
Networking tips for
college grads
Linda Wacyk

21 House & Home
Get the facts before
installing a solar
water heater
James Dulley

24 Ramblings
Blood and rumors
Mike Buda

FEATURES

8 Our Energy
Your grassroots power
Megan McKoy-Noe

10 Cover Story
A co-op member and
her relatives make a
difference in Africa
Kevin Cragg

15 Michigan-made
Jewelry with a past
Kath Usitalo

Michigan Country Lines, USPS-591-710, is published monthly, except August and December, with periodicals postage paid at Okemos, MI, and additional offices. It is the official publication of the Michigan Electric Cooperative Association, 2859 W. Jolly Rd., Okemos, MI 48864.

Subscriptions are authorized for members of Alger Delta, Cherryland, Cloverland, Great Lakes, HomeWorks Tri-County, Midwest Energy, Ontonagon, Presque Isle, and Thumb electric cooperatives by their boards of directors. Subscriptions for nonmembers are \$6 per year.

POSTMASTER: SEND ALL UAA TO CFS.

Letters to the editor should be sent to Country Lines, 2859 W. Jolly Rd., Okemos, MI 48864. Phone 517-913-3531. Email: gknudtson@meca.coop.

Association officers are **Tony Anderson**, Cherryland, chairman; **Ken Swope**, Midwest Energy, 1st vice chairman; **Robert Schallip**, Cloverland, 2nd vice chairman; **Eric Baker**, Wolverine Power, secretary-treasurer; and **Brian Burns**, PIE&G, past chairman. **Craig Borr** is president and CEO.

Unsolicited letters, photos and manuscripts are welcome. *Country Lines*, however, will not be responsible for their safe keeping or return.

The appearance of advertising does not constitute an endorsement of the products or services advertised.

Change of Address: Please notify your electric cooperative. See page 4 for contact information.

YOUR CO-OP

Pages specific to your electric cooperative: 1, 2-3, 6-7, 18-19, 22-23, back cover

*Not in all editions

On the Cover

Residents from the African village of Morrumbala carry blackwood, which is especially valued for making musical instruments. A Cherryland Electric Co-op member and her family have boosted the village's economy by helping to market blackwood and starting a sawmill.

Photo Courtesy – Rachel Stivani





BOARD OF DIRECTORS

TOM VAN PELT

President

386-5234 • tvanpelt@cecelec.com

TERRY LAUTNER

Senior Vice President

946-4623 • tlautner@cecelec.com

MELINDA LAUTNER

Secretary

947-2509 • mlautner@cecelec.com

RICK DENEWETH

Treasurer

929-4526 • rdeneweth@cecelec.com

BETTY MACIEJEWSKI

Director

947-0463 • bmaciejewski@cecelec.com

JOHN OLSON

Director

938-1228 • jolson@cecelec.com

JON ZICKERT

Director

631-1337 • jzickert@cecelec.com

GENERAL MANAGER

Tony Anderson

CO-OP EDITOR

Nick Edson

OFFICE HOURS

Monday-Friday 7:30 a.m.– 4 p.m.

TELEPHONE NUMBERS

231-486-9200 or 1-800-442-8616 (MI)

ADDRESS

P.O. Box 298, Grawn, MI 49637

WEBSITE

cherrylandelectric.com

PAY STATION

Cherryland Electric office
5930 U.S. 31 South, Grawn

MANAGER'S MESSAGE

Lessons Learned

Some might wonder why I would want to remind Cherryland members that it was one year ago this month that the cooperative experienced its worst storm of the last 30 years.

“Don’t rip the Band-Aid off the wound,” some might say. For me, the memories are not bad. We were faced with a challenge, met it, made most people happy, made a few less-than-happy, looked for ways to improve, and moved on.

What I really want to share with you now are the actions we did take to improve in the last year. The most obvious to us internally is in the area of equipment. Rather than renting and borrowing, your board approved over \$240,000 for two pieces of equipment to get us through snow, mud and difficult terrain much, much faster.

The biggest piece is something we call a “digger bomb.” It is essentially a vehicle with tank-like tracks capable of digging holes with room to haul men and necessary materials, such as power poles.

We had rented one periodically in the past to avoid the \$220,000 price tag. Owning this piece of equipment prevents any delays in restoration when storms arise. We now use it on a regular basis in snow, mud and swamp areas to reduce wear and tear on conventional equipment.

One problem in March 2012 was moving men and smaller materials, such as transformers, into cross-country sections of line in deep-snow conditions. For this, we purchased a Gator ATV vehicle with tracks (\$20,000). It can carry more men and materials through deeper snow more quickly than any snowmobile. It proved invaluable in our recent December storm. It too will become a regular part of our daily arsenal when road and terrain conditions are poor.

A partial fix of the phone situation is almost complete. As I have stated before, we will never have the phone lines or personnel to handle hundreds of calls at

once, let alone thousands. However, technology will allow our co-op’s members to report thousands of outages at once. In a few short months, those members with a smart phone will be able to report an outage to Cherryland’s offices through an “app” on their phones.

Yes, we understand this isn’t perfect, but we hope the members understand it is the best resolution available for reporting hundreds of outage locations at the same time.

We have also added staff to work on the communications issue. See the column on the next page by our new grassroots advocate, Rachel Johnson.

Improving our Facebook communications will be a piece of Rachel’s job.

You should already be seeing more two-way communication in this area. In the future, you will see more opportunities for members to discuss co-op topics and/or “challenges” face-to-face because of Rachel’s work.

“Triage” was a term we used a lot in the storm. Storm response is often predicted by the extent of damage in the field. Therefore, rapid assessment of that damage is essential. The heavy snow last March made this difficult.

In 2013, we are exploring the possibilities of using a remote-controlled airplane drone to fly over our lines and send back video of the damage.

There were certainly many more lessons learned from that storm, and these are just a few highlights from a very busy, expensive 2012. But we can’t put all the power lines underground and still keep costs affordable. We must continue striving for reliability at an affordable price, and this will always involve innovation, compromise, patience and sometimes, the realization that we indeed live in a rural area.

Regardless, we will always look for the lessons life hands us and do the best we can to remember them. Your comments and insight are always welcome.



Tony Anderson
General Manager



Do You



Like

Me?

 Yes No

(check one)

In 1967, psychologist Stanley Milgram famously coined the phrase “six degrees of separation”—the idea that any two strangers are connected to each other by no more than six friend-of-a-friend connections.

That number has—at least for the one billion users of Facebook—narrowed to 4.74. According to a study by scientists at Facebook and the University of Milan, that’s the average number of friends who separate any two random Facebook acquaintances.

The world population is growing but, with technology, our world is in many ways much smaller. We can connect with people from other countries, cultures and walks-of-life. All without ever leaving home.

Here at Cherryland, we recognize the opportunity that social media offers to better connect with you—our members. That’s where I come in. As the newest Cherryland employee, social media guru, and all-around swell gal, I will be working on member engagement efforts. This will involve designing strategies and communications campaigns that better utilize social media platforms such as Facebook.

I like to think of myself as a recovering academic, since most of my background is in education. I spent several years teaching undergraduate public speaking. I have a master’s degree in communications and rhetoric, so you could say that words are my business. My teaching experience taught me that good things happen when people get together and talk about issues that affect them. Facebook gives you, as Cherryland members, a space to do that.

This year, we will be ramping up our Facebook efforts. We want to create a place where you can go for energy industry news, energy-saving tips, outage updates, and to interact with us and other members.

We earnestly want to hear from you. And, I have a lot of great topic ideas to spur discussion. If you haven’t already followed us on Facebook, it’s time to get on board.

We have a lot of exciting plans for other



Rachel Johnson, Cherryland Electric’s new grassroots advocate, will be harnessing the power of social media to engage with you, as a co-op member.

social media sites, as well. We will be revamping our Twitter account over the next few months and will share those changes with you as they happen.

all over the U.S., and also spent some time living abroad, in Asia. And, while I still love to travel, I am looking forward to finally settling down. Social media sites like Facebook

Get on board and follow us on Facebook!
It’s a great way to stay connected to your co-op.

Don’t be surprised if you see a Cherryland YouTube channel in the future. It’s a good thing. Trust me.

All of these changes are a response to the changing needs of our members. We know you’re out there in the social media-sphere and we want to be there with you. As our founding members learned 75 years ago, we are much stronger together than we are alone.

I am not only new to Cherryland, I am new to the Traverse City area. I have lived

have helped me always feel connected to home, no matter how far I roamed.

This community is Cherryland’s home—let’s use Facebook to create and nurture our connections to each other and to our home.

I may be new to Cherryland, but if the scientists at Facebook are right, I probably share several connections with all of you. Your best friend’s sister might be my sister’s best friend. Does that blow your mind? Me, too. Why don’t you come chat with me about it on Facebook?

ATTENTION READERS:

The publisher of *Michigan Country Lines* magazine is working with Marketing Resource Group (MRG), a reputable public opinion research company, to conduct a confidential survey for Michigan's electric cooperatives. If MRG contacts you by phone or email, please be assured they are not selling anything. The short, confidential survey will help your co-op serve you better.

Changing Careers & Education

Thank you very much for the interesting education articles in *Michigan Country Lines* (Feb., "Education in 30 Years," p. 4; "Changing Hats at Half-time," p. 8). Through these, you increased public awareness of opportunities for creative improvement and positive thinking, both within the K-16 educational systems and for individuals considering new professions.

At the University Center Gaylord, through our partnership of two community colleges and seven universities, we strive to offer excellence for students to achieve post-high school academic goals...from technical trades to associate, bachelor, master and doctoral degrees. With a stronger educational base, individuals are better equipped to provide for themselves, their families, and to help their communities thrive, which enhances economic growth for all.

We are among the few state locations offering GED completion, with an advisor to help students learn

about financial aid and college options to help them build on their achievement. We also offer community education for adult life-long learners and special summer hands-on programs for kids to strengthen their interest in science, technology, engineering and math (STEM). Such programs include Lego Robotics, the Natural World Explored Through Technology and Introduction to DC Electronics.

With the above information, you can see why we appreciate your magazine's educational focus in February!

— *Sheila Simpson, MA
Advising & Marketing Coordinator,
University Center Gaylord*

'Tortured Text' Column

Your column on cursive handwriting (Mike Buda/Jan. *Ramblings*) was an enjoyable read. I, too, find that the more I depend on keyboards to communicate, the less muscle memory I have in my hands for penmanship. I'm trying calligraphy.

I thought you might get a kick out of these "Save Cur-

sive" items by beanforest (see sample, below), a Grand Rapids-based Etsy entrepreneur. I'm not connected with beanforest or The Calamity Collective, except as a happy customer.

— *Teresa Fowler, Naubinway
Cloverland Electric Co-op*

Mike Buda's column appeared at an opportune time, as I just discovered in the last three months that cursive was no longer being taught in the public schools. I realize that some people may suffer from motor



skills that prevent legible handwriting, and I also realize one must prioritize the curriculum, but I wonder what criteria was applied when making this decision, and what replaced the instruction time.

There is no question that cursive writing is much faster at recording thoughts and is necessary many times when computers or other processors are unavailable. During the 20th century, many people (including even some of the most primitively educated, such as George Elson) journaled life experiences that have added much to our recorded history.

I find it a shame that our

young people today are denied this useful development in communicative skills.

— *Phillip Kenney, Presque Isle
Electric & Gas Co-op*

I greatly enjoyed your article in *Michigan Country Lines*. I have always been interested in the art of handwriting. In fact, I am a left-handed calligrapher and I think about today's young adults who text-only and are now permitted to print rather write their schoolwork. When they apply for a job and must affix a signature to a contract or employment papers, will they text?

I was the U.S. vice-president for a German writing instrument company. We manufactured writing and drawing instruments and did a large business in fountain pens. Children in Europe are very familiar with fountain pens, but children in the U.S. have, for the most part, grown up with ballpoint pens. We contacted over 200 school systems in the States, offering instruction in cursive writing and free pens and inks. We received one reply.

I have serious concerns about the future of our youth. Thanks for your input.

— *Patt Hopkins, Atlanta,
Presque Isle Electric & Gas Co-op*

I read your article in *Country Lines* with interest, as my handwriting is also unreadable. When I mentioned it to my doctor, he diagnosed Parkinson's disease, as many PWP's (people with



◀ DO YOU KNOW WHERE THIS IS?

Every co-op member who identifies the correct location of the photo at left by **April 10** will be entered in a drawing for a \$50 credit for electricity from their electric cooperative.

Do not accept Mystery Photo guesses by phone! Email mysteryphoto@countrylines.com, or send by mail to *Country Lines Mystery Photo*, 2859 W. Jolly Rd., Okemos, 48864. Include your name, address, phone number and name of your co-op. Only those sending complete information will be entered in the drawing. The winner will be announced in the May 2013 issue.

The January contest winner is Kathy Sparr of Byron, who correctly identified the photo from Grand River Ave., between Portland and Eagle.



St. Joseph Student Represents Michigan at National Co-op Meeting

Drew Graeber, a junior at Lake Michigan Catholic High School in St. Joseph, and a Great Lakes Energy Cooperative member, represented Michigan electric co-ops at the National Rural Electric Cooperative Association (NRECA) annual meeting in New Orleans, LA, recently.

As part of his year-long service on the NRECA Youth Leadership Council (YLC), Drew joined over 40 students from co-ops across the country to assist at the convention that brought together over 12,000 co-op directors, managers and staff. Shown above, YLC stu-



dents each carried their state's flag in a procession to kick-off the huge event, where industry issues affecting electric co-ops and their member-owners were discussed and voted on.

Drew was elected by his peers to serve on the Youth Leadership Council during

the Rural Electric Cooperative Youth Tour to Washington, D.C., where each June electric co-op students from across the country join together to meet their legislators and see the sights.

Learn more about co-op youth programs at miYLS.com.



Drew Graeber

Letters, continued

Parkinson's) develop tiny or unreadable handwriting. I enjoyed your article, and thank heavens for computers.

— Belinda Garvon

Plasma Converter Better Than Nuclear?

Have the many Michigan electric co-ops ever considered a shared electrical generation project? In particular, have you considered StarTech's Plasma Converter System? (See theplasmasolution.com)

Until nuclear fusion becomes possible, this is the next best thing with none of the dangers of nuclear power. It's the solution for clean electric power, pure water, 100 percent recycling, greenhouse gases, industrial pollution, municipal trash, and emptying landfills. Although, gold

and silver deposits have to be occasionally scraped off the bottom of the plasma chamber. Thanks for answering my question.

— Beth Clemensen, Scottville
Great Lakes Energy

Editor's Note: Michigan co-ops are involved in shared electrical generation. Examples are Wolverine Power Cooperative, which has seven member co-ops, a 15-megawatt interest in Campbell 3, a coal-fired, base load facility primarily owned by Consumers Energy, and Presque Isle & Gas Co-op also participates in shared generation.

About the StarTech Plasma Converter, here's what Brian Sloboda, of the Cooperative Research Network says: "Co-ops have been looking at this technology since the 1990s. The main issue is that it has

never proven to be economical. It must operate at a very high temperature, which takes a lot of energy, so it's highly unlikely the process produces significantly more energy than it uses. Also, StarTech's website is incomplete and doesn't indicate that an independent test was conducted.

Many technologies claim to create gold and silver byproducts, which is often used to get people excited, but the real focus needs to be on efficiency and economics. This technology doesn't currently pass those tests. Also, their website says they are under Chapter 11 bankruptcy protection.

Fusion energy may have a bright future, though. A group of electric co-ops recently toured The National Ignition Facility at Lawrence Livermore National Lab, which is using lasers to create energy. In fact, they are on the verge of a major

breakthrough that has been 50 years in the making. The technology promises a new way to generate electricity with no long-term radioactive waste or dependency on foreign energy sources. The U.S. leads the world in this technology and co-ops are closely monitoring its progress.

Mystery Photo

The New Era Potato Chip silo (Mystery Photo/January) is located on Grand River, Portland, Michigan. This is at my Aunt Esther Schrauben's home.

When she turned 100 years young, they repainted the silo for her birthday. She is going to be 103 years young in July 2013 and still enjoys tying quilts to keep her company.

— Trish Martens, St. Johns
HomeWorks Tri-County
Electric Co-op



75 Years of Cherryland History

This is the third in a series about people who had a hand in Cherryland's rich history as a cooperative. We are celebrating our 75th year in 2013.

Alice Falck never met Lyle Johnson, yet they both played important roles in the 75-year history of Cherryland Electric Cooperative.

The new history of Cherryland—called “Lighting the Way”—will roll off the presses soon. It’s a book that’s been three years in the making. Actually, make that 75 years in the making.

That’s because in 1938 a group of rural northern Michigan farmers wanted what their brethren that lived in nearby towns had—electricity.

So they got together, learned about President Franklin D. Roosevelt’s “New Deal” and the start-up money that was available, and became incorporated into an electric cooperative.

While the story is about those 75 years, the book centers around the people who made it happen and experienced firsthand how our cooperative touched their lives.

Each chapter of the book starts with a feature story about a person who either benefitted from receiving electricity from Cherryland, helped start the company, or worked here for years.

In the case of Alice Falck, she lived near



Nick Edson

Interlochen during the summers. Her family was from Cincinnati and would come to northern Michigan and the Interlochen National Music Camp after school was out in June.

Alice recalled the first day in 1939 that the lights flickered on in her family’s home.

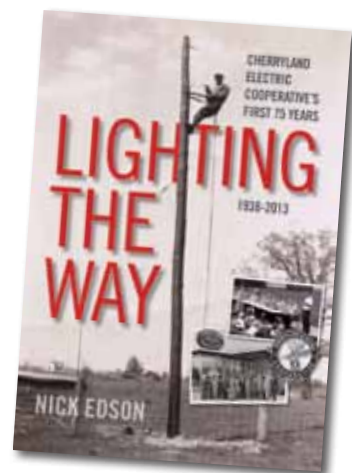
“It was so exciting,” she told me. “It changed the way we lived. It’s hard for people to appreciate that these days because we all take electricity for granted. But when you don’t have it, or in our case, never had it, it’s really something special.”

Lyle Johnson was one of Cherryland’s early linemen and was admired and respected by both our members and fellow employees during his 40-year career at the cooperative.

When I sat down with him a couple years ago, I could see he had more to share than most people. So after listening to him for several minutes, I decided to go to “Plan B.”

Instead of a feature story, I wanted Lyle to tell his story in his own words with the use of a Question-and-Answer session. That way, I quoted him word-for-word instead of picking out the quotes I liked best for a feature.

My favorite passage from Lyle came after



I asked him how the safety program got started at Cherryland, since doing line work is dangerous.

A big smile spread across his face. Lyle told me he was working one day at the bottom of a pole in 1947 while the other two Cherryland linemen were making repairs at the top.

One of the linemen at the top of the pole—Bob Lambert—had a hammer drop out of his hands. It landed on Lyle’s head and knocked him out. The two linemen scurried down the pole to make sure Lyle was okay.

“That’s when they decided by a 2-0 vote, with me abstaining since I was knocked out, that we would start wearing hard hats as part of our safety program,” Lyle said with a chuckle.

Lyle went on to become a line foreman, and Bob Lambert went on to become the co-op’s general manager.

Their stories are typical of Cherryland’s—hard work and keeping the best interests of our members in mind always underscored our growth.

So, we tell our Cherryland tale decade-by-decade using stories about people. At the end of every chapter we spend a few paragraphs talking about what happened at the cooperative during those 10 years.

There are stories that will make you laugh, and some that will bring a tear to your eye. Our hope is that when you are finished with this hard cover book, you’ll better understand not only who we are, but the road we have traveled.

And as we look ahead to the next 75 years, an idea of where we’re going.



From Cherry Seeds to ‘Pure A Capella’

Just as a cherry tree grows from a tiny seed, so the Pure A Cappella festival grew from a Cherryland Electric Cooperative grant eight years ago. Cherryland member Candice Wallace decided to organize a women’s choir that sang varied genres of music. She called the new choir Trillium Singers. A Cherryland Cares grant enabled Candice to buy music and start the choir’s rehearsals.

Trillium Singers performed many concerts in collaboration with the area’s school choirs. They also donated thousands of dollars to women’s breast cancer funds by twice performing “Where I Live,” an oratorio about surviving breast cancer.

Pure A Cappella (which means just voices) is the name of a new festival created by Candice that will showcase some of northern Michigan’s a cappella singing talent, while raising funds for musical groups. Ticket prices are being kept low so more people can enjoy the event. It will take place at Milliken Auditorium in Traverse City on March 16 at 7:30 p.m. Tickets are \$12 and can be bought through MyNorthTickets.com or call 800-678-3416.

Coffee & Conversation



Join Cherryland General Manager, Tony Anderson, for a morning of *coffee and conversation.*

Learn more about our plans for the future and give us feedback on what you would like to see from your electric cooperative.

Saturday, March 16
9 – 10 a.m.

Cottage Cafe
472 Munson Ave.
Traverse City

Saturday, March 23
9 – 10 a.m.

Village Inn
201 St. Joseph St.
Suttons Bay

Saturday, April 6
9 – 10 a.m.

Crystal Mountain
12500 Crystal Mountain Dr.
Thompsonville

Space is limited, please RSVP to Rachel Johnson
rjohnson@cecelec.com • 231-486-9275

The Power of Grassroots

Electric co-op consumer-members can help shape rules and laws that keep electricity reliable, affordable and environmentally responsible.

Electric co-ops often ask their consumer-members to get involved when it comes to laws and regulations that affect the affordability or reliability of electric service. But what does it really mean for you to be part of this “grassroots” movement?

This grassroots groundwork has already paid off for electric co-op members and Michiganders who want renewable energy, but in an affordable, responsible manner. Last year, co-op members and many other groups, such as the Michigan Farm Bureau, chambers of commerce, churches and labor unions campaigned against Proposal 3. The proposal would have amended the state’s constitution to require that 25 percent of electricity be generated by in-state renewable sources by 2025. It was defeated by 63 percent of the voters because of its estimated \$12 billion price tag, and the state already had renewable standards requiring electric utilities and suppliers to have 10 percent renewables in their generation mix by 2015. Another reason is they agreed the constitution is not the right place for enacting ever-changing energy policy.

“The defeat of Proposal 3 is just one recent example of the electric co-op network working with its members to ensure an affordable, reliable and environmentally responsible energy future and improved rural quality of life,” explains Craig Borr, president/CEO of the Michigan Electric Cooperative Association (MECA).

“At MECA, we do our part to work with lawmakers on policies that are fair to electric co-op consumer-members,” Borr says. “But our consumer-members provide the real legislative muscle, and we need them to flex it now more than ever.”

Nationwide, electric co-ops boast one of the largest potential grassroots bases, with 42 million people spread across 75 percent of the U.S. receiving electric service.

Mobilizing Consumer-members

It’s easy to see why electric co-op consumer-members should be involved, says Randy Dwyer, grassroots director at the National Rural Electric Cooperative Association (NRECA), the trade organization that represents over 900 nonprofit, member-owned electric co-ops.

“Electric co-ops should include their members in the political process because members provide the real voice,” Dwyer stresses. “The co-op looks out for them, but if they’re going to speak on behalf of their members, members must be engaged in the process.”

To that end, MECA and other electric co-op statewide associations work with their member co-ops to create political action plans and help them engage legislatively. For example, the MECA team coordinates and participates in hundreds of outreach efforts with its member co-ops throughout the year. This includes everything from supporting local fundraising events to hosting elected officials at local co-op offices and organizing six to eight outreach visits to Washington, D.C., with its members. All of these efforts are possible because of the close working relationship MECA has built with elected officials over the years.

“We want consumer-members to get used to receiving political information from their local co-op, so they’re familiar with the issues when it’s time to take action,” Borr adds.

As a result, co-op member-consumers will sometimes see policy-related articles in *this* magazine, and through other media from their local co-op. When necessary, they’ll see a call to action, as happened with Proposal 3.

“Our consumer-members can make a difference,” Borr says. “They can help shape the laws and rules that affect their electric service and their wallets.”

Why Co-ops Care

Since electric co-ops have members, not customers, and they are nonprofit—it means your electric co-op isn’t creating excess revenue for far-away investors. All the money stays local, and when revenues exceed operating costs, members receive allocations called “capital credits.” The co-op business model also requires them to enhance the quality of life in the communities they serve, and that naturally extends to statehouses and Washington, D.C.

Lobbying—aka “advocacy”—involves citizens talking directly with legislators. It’s one of the five freedoms enshrined by the First



Left: Craig Borr, MECA President/CEO, greets U.S. Sen. Debbie Stabenow at an electric co-op meeting in Lansing. MECA and its electric co-op members work to build a close working relationship with elected officials on behalf of the co-ops’ consumer members.



Michigan high school students talk with U.S. Rep. Bill Huizenga (R-Zeeland) on the Capitol steps in Washington, D.C. Every June, over 1,200 students nationwide are sponsored by their electric co-ops to attend the Rural Electric Youth Tour of Washington to learn about our nation's capital, tour historic sites, and meet with their Congressional representatives as electric co-op ambassadors and members.

Amendment: “Congress shall make no law abridging the right of the people to petition the government for a redress of grievances.”

That’s why MECA works with both the Michigan Legislature and Congress. The NRECA headquarters is in Arlington, VA—just across the river from the capital—and maintains a staff of lobbyists that spend most of their time on Capitol Hill and working with various agencies on the co-ops’ behalf.

NRECA was formed in 1942 specifically to overcome World War II shortages of electric construction materials, obtain insurance coverage for the new electric co-ops, and rectify wholesale power supply problems. Since those early days, NRECA has advocated for consumer-owned co-ops on energy and operational issues as well as community and economic development.

Today, these lobbyists actively deal with two-thirds of U.S. House and Senate committees and subcommittees. Each year, hundreds of bills are introduced that could directly affect electric co-op members—issues ranging from energy and climate change policy to disaster relief, endangered species protection, and railroad reform.

The NRECA lobbyists get their “marching orders” from your electric co-op’s board of directors, who are elected by you and your neighbors. Each year, electric co-op representatives also meet to vote on resolutions that direct NRECA’s policy agenda.

To help MECA and their co-ops set legislative policies and determine which political candidates to support, members of the

NRECA Government Relations staff meet weekly to discuss contributions to candidates, fundraising and political party events, grassroots electric co-op participation in Washington, D.C., and state political events. Then, NRECA’s staff, statewide managers and state political action committees reach an agreement on which candidates should get contributions. NRECA and MECA work very closely to ensure all funds are invested wisely and support candidates based solely on their record and support for electric co-op issues, regardless of political party.

Where You Come In

Dwyer echoes Borr in that co-ops can’t go it alone. “CEOs and co-op boards are doing everything they can to keep electric costs affordable,” Dwyer says. “And they do a great job of it. But there are things outside their control, like rules and regulations, that affect prices and service. By having a strong political action plan, a dedicated workforce, and engaged members, each co-op can help drive these concerns home. And when lawmakers hear from the folks—voters—back home, they listen.”

How To Get Involved

The national platform for electric co-op consumers to voice their concerns to Congress is the “Our Energy, Our Future[®]” campaign. To learn more about the issues facing your electric co-op and sign up to make your voice heard, visit:



Our Energy, Our Future
A Dialogue With America

OurEnergy.coop



Making a Difference: From Leelanau to Africa

A Michigan logger makes life better in a small town a world away. **Kevin Cragg**

When Jim Kirt left the family farm in Leelanau County, he chose a path less travelled. Like his old home, his new one sat in close proximity to water. The similarities, however, abruptly ended there.

After logging across Michigan for 15 years, Jim yearned for something bigger than himself. He felt called to be a Christian missionary, and what better place to serve than Africa?

In early 1999, Jim relocated his sawmill business to central Mozambique on the banks of the mighty Zambezi River, which gathers water dropped by the magnificent Victoria Falls upstream in Zimbabwe.

On the outskirts of a small village called Morrumbala, Jim lived in a tent for five months with his wife Eileen, whom he had recently met and married in Africa. Together, they built a house, and with the aid of Jim's sawmill, they would bring the gospel and employment to the people of Morrumbala.

The area around the mission resembles a stereotypical snapshot of African bush country—subsistence farming, mud huts, few shoes, and fewer government services and schools.

The mill, known as Kalibu Timbers,

changed all that. It was a catalyst for economic activity in the area, and provided employment for 25 men.

Soon, carpenter “shops”—one man with a handsaw and planer huddled under the shade of a mango tree—sprang up around the village, where wood from the mill was transformed into simple furniture, doors and window frames. Employment also brought income and trade. The mission provided training and educational opportunities in support of economic development.

For the first four years, operating the saw mill was a labor of love for the Kirts'. Diesel-powered generation made it possible to run a saw and keep saw blades sharp, plus provide about two hours of electricity to the house each night. The rest of the work was manual.

Electricity was available in the village on a limited basis, but had not yet extended to the mill site. All that changed in 2003 when government inspectors, noticing the positive economic impact the mill was having on the local economy, offered to extend electric service in the village and out to the saw mill for free.

Reliability has been surprisingly good since then, although frequent power surges

required the installation of protective gear around new electric power tools at the mill. The utility also has a “maintenance day” every three months, when it cuts off all power for an entire day—usually a Sunday.

Just like the arrival of electricity to rural electric co-op members 75 years ago, electricity brought rapid changes to Morrumbala's economy and service infrastructure as gas pumps, a bank, cell phone towers and even internet service soon appeared.

The mission also benefited, with the building of a new fully-electric church, complete with a projector, copier and computer. The sawmill followed by adding new equipment. Sanders, table saws, joiners, and a new electric-powered mill helped boost productivity and capability. The Kirts' also acquired a few electric appliances in their home and started to feel like they had returned to at least the 20th century.

While the mill and mission don't have power outages resulting from heavy wet snowstorms like we see in northern Michigan, the business of electricity in rural Africa has its own unique challenges. For instance, industrious locals once drained oil from the primary transformer serving the area, and power was not restored for six weeks. On another occasion, the mill lost power and called in the outage to the utility. After getting no response, the Kirts' discovered that



Photos Courtesy - Rachel Strawn



Far left: Frank, a “wood-turner” in the village of Morrumbala, uses an electric lathe to make furniture in the sawmill started by Michigander Jim Kirt and his wife Eileen. Frank's original lathe was powered manually by his wife, who had to wrap the lathe belt around her back and literally twist back and forth. **Left:** A local “ladies conference” in the church the Kirts helped build in Morrumbala.





Above: Jim Kirt and Morrumbala residents he employed to work in the sawmill he built in their African village. **Top, right:** Rachel Stivani, a Cherryland Electric Co-op member from Traverse City, MI, with Elijah, who works at the sawmill. **Right:** Jim Kirt's sawmill helped jump-start the village's economy, including expanded electric service that brought more rapid change, including a church and bank.



a utility employee had removed a number of fuses to re-sell. After a lengthy discussion, the employee returned the fuses. Just this past Christmas, a transformer failure resulted in a week-long power outage that ran through the holidays.

Electricity brought another exciting change to mill operations. The new electric table saws enabled expansion into the harvesting and processing of exotic African blackwood, a highly desirable wood prized by artisans and woodworkers worldwide.

A relatively small, long-lived and slow-growing tree, this blackwood has an esteemed place in history that dates to antiquity. Egyptians were so fond of it they sealed blackwood artifacts in their tombs. Ancients called it the "musical tree" because the dense, oily heartwood produces a beautiful sound when used for wind instruments. It's a favorite for clarinets and bagpipes, and Luthiers treasure it for making stringed instruments, such as guitars. It's also the wood of choice for custom billiard cues, knife handles, and fine turnings such as extremely thin finials and executive ink pens. In Africa, hand-carved blackwood figurines are a tourist favorite to this day.

This brings our story full circle. In need of a distributor for their blackwood and other

exotic woods harvested around Morrumbala, such as Panga Panga and African mahogany, the Kirts' turned to their niece, Cherryland Electric Co-op member Rachel Stivani.

Like her uncle, Rachel took a leap of faith. She knew little about wood and less about running a business, but given the niche market served and small order sizes, Rachel helped her aunt and uncle launch a web-based business named "Blackwood Source."

To keep overhead costs down, she keeps inventory in her garage and at a small storage shed south of Traverse City. Since launching the business, Rachel has filled orders from all but two states and shipped wood to every continent except Antarctica.

Though web-based, Rachel has developed many personal relationships with customers who are eager to share stories and samples of their woodworking projects. Popular uses for the wood she supplies include game calls, bagpipes and executive ink pens.

Given its natural beauty, it's almost impossible not to become mesmerized by the blackwood species—especially when carefully worked by a master craftsman, and Rachel has not been immune from catching the bug. She recently completed an introductory wood-turning class and joined a local club.

Back in Africa, strong worldwide demand coupled with agricultural expansion has raised concerns about the future sustainability of blackwood. Mill operators, like Kalibu Timbers, conservation groups, and governments across Africa are implementing practices that will allow the trees to flourish while maintaining an important source of revenue.

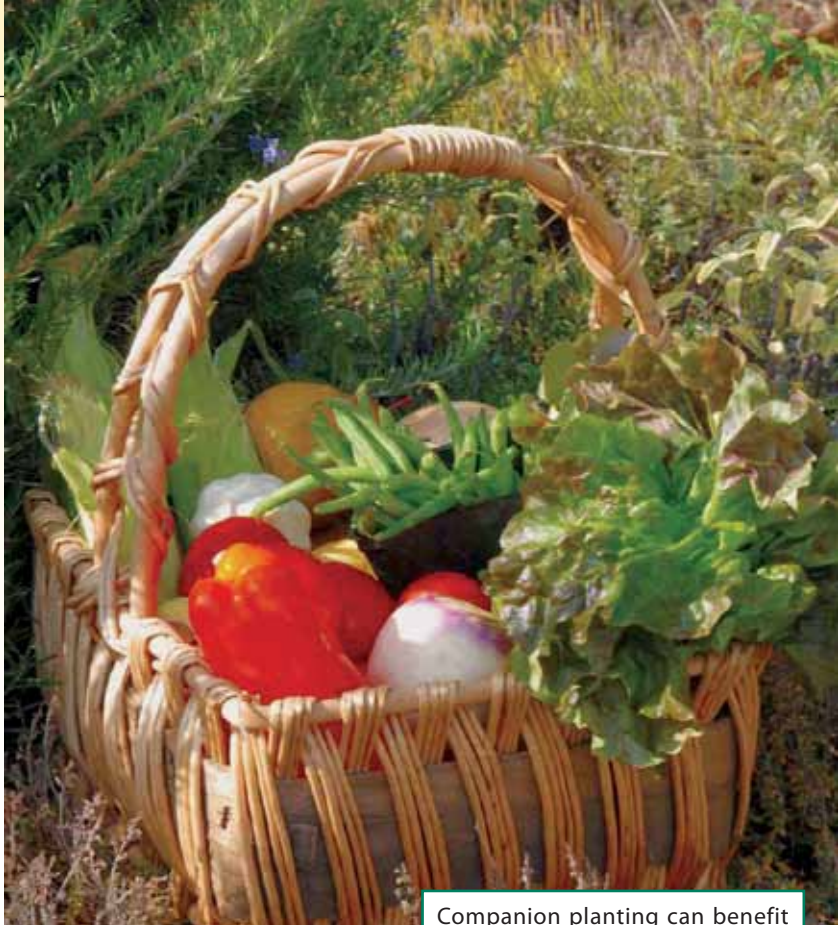
As for Jim and Eileen Kirt, they are ready to start a new chapter in their lives and plan to relocate stateside early this year. Their departure will mean the end of Kalibu Timbers, but not the mission, as a new couple has stepped in to continue the good work started by the Kirts. Eventually, when existing inventories have run out, Blackwood Source will shut down, too.

The Kirts' do plan to return to Mozambique for short visits in the coming years and stay connected to the mission they began so many years ago. For them, it's been a fascinating and rewarding journey that has touched many lives, which is what often happens when you choose a path less-travelled.

Visit cherrylandelectric.com to see more pictures of the mission, sawmill, and people of Morrumbala.

The Garden Buddy System

Some vegetables, herbs and flowers protect and feed each other when grown side-by-side.



Photos - Rick Wetherbee

Companion planting can benefit your garden and increase its yield by providing nutrients, protecting against disease, repelling pest insects while attracting beneficial ones, and attracting bug-eating birds.

Have you ever noticed how one vegetable plant can fail in one location yet thrive in another? Given the same soil, water and light, the two plants don't seem to grow the same. The difference may be a plant that's growing next door.

This plant compatibility is the foundation of a gardening technique called "companion planting." Basically, it's a partnership formed by growing plants next to each other that are different but also enhance each other's ability to grow and increase productivity in five ways.

Plants That Nourish

Certain plant allies improve the flavor of neighboring vegetables by providing nutrients. For example, comfrey (an important herb in organic gardening, used as a fertilizer and herbal medicine), buckwheat and other deep-root plants can mine nutrients by bringing them to the surface and making them more available to other plants. Various cover crops, such as alfalfa, clover and vetch (a scrambling, herbaceous plant of the pea family that is used as silage or fodder) also nourish neighboring plants with essential nutrients and trace minerals, including nitrogen, phosphorus, potassium, calcium, magnesium, and iron.

Other plants—such as peas, beans, lupines and clover—can transport nitrogen from the air we breathe down into their roots, where

bacteria converts it into a friendly form for their neighbors. In this case, corn, peas and other nitrogen-hungry plants make great companions, as they will benefit from the "nitrogen-fixing ability" of these legume-type plants.

Plants That Protect

Other plants can improve their neighbors' health through a network of defensive chemicals that help ward off pests and disease. Marigolds are a classic example, as both the French and African varieties contain thiopene, which is toxic to certain soil-dwelling worms. As such, they are great companions for tomatoes, beans and other plants susceptible to nematode damage.

Plants that use similar chemicals for protection against disease include garlic, onions and chives—commonly-known compatibles that prevent black spot on roses and scab on apples. Likewise, brassica roots release chemicals that suppress some soil-borne diseases. Equally important are silica-rich plants such as comfrey and borage (herbaceous, used medicinally and as salad), which can neutralize rust, fungal attacks and other water-borne diseases. And, dandelions in a tomato patch are a good thing since their presence may deter fusarium wilt, a soil-borne fungus that reduces plant health and yields.

Other ways companion plants protect is by keeping things cool. Summer heat can take a

toll on radishes, spinach, lettuce and turnips. Larger plants, such as pole beans and tomatoes, provide needed shade that conserves moisture and reduces heat that causes these vegetables to become woody or bolt.

Plants That Repel Pests

Most pests locate their next meal from their host plant's chemical odors or color. A diversified garden boasts a complexity of plant odors, colors and textures, thereby composing a natural barrier that makes it harder for pests to locate their target meal. How easy it would be for the cabbage moth to attack an area growing only broccoli and cabbage. By surrounding and interplanting that same area with carrots and onions, you confuse the moth by masking the scent of broccoli and cabbage.

Strong-scented plants also benefit their neighbors by masking their scent, especially for pests that rely on scent to locate good eats. Rosemary, sage, lavender, oregano and other aromatics often foil aphid attacks on susceptible neighbors. Another idea is to plant the garden perimeter with garlic and marigolds to repel aphids and beetles.

Other plants contain phytotoxins that lure,

then sicken or kill dining pests. Mustard oils found in cabbage and similar plants often poison unsuspecting spider mites, mosquitoes, and Mexican bean beetles. Therefore cabbage, broccoli and kale make good companion plants for beans.

Some plants repel bugs simply by creating a physical barrier between the critter and the plant it wants to eat. If raccoons are raiding your corn, try surrounding it with a scratchy barrier of squash vines. Or, consider the fact that flea beetles love to devour cabbage and cauliflower, but never seem to bother the sticky, hairy leaves of tomatoes. Catnip is another that repels flea beetles, but also Colorado potato beetles and green peach aphids. However, you don't necessarily have to plant catnip in your garden to benefit from its protection. Catnip easily self-seeds, and if you grow it outside the garden it can then be cut and used as a protecting mulch.

Additional repellent plants are leeks, onions, and rosemary against the carrot fly; parsley and tomatoes against the asparagus beetle; geraniums and petunias against leafhoppers; southernwood against cabbage moths; and nasturtiums against whiteflies.

Plants That Attract 'Good' Insects

There are some bugs you want to attract because they prey on pesty ones. These insatiable insects seek out and destroy pests such as aphids, slugs and snails, cucumber beetles, caterpillars, and other nasty bugs that wreak havoc in your garden.

Adult beneficials and their larvae feed on insects, however these hard-working adults also need pollen- and nectar-rich flowers to survive. Begin with spring-flowering plants such as sweet alyssum and sweet woodruff. Include long-blooming plants like marigolds, coreopsis and petunias, and extend the season with later-blooming asters, chrysanthemums and salvias.

Attract parasitic wasps, lacewings and syrphid flies with

flowering members of the umbel family, including yarrow, parsley, dill and chamomile. This will greatly reduce pest populations of caterpillars, aphids, leafhoppers and thrips. Sunflowers, echinacea, cosmos, zinnias and others in the composite/daisy family are prime flowers for luring large predatory insects that dine on cucumber beetles, grasshopper eggs, slugs and caterpillar pests. And, when you get behind on harvesting the broccoli and lettuce, leave them be—their flowers provide food for beneficials.

Plants That Attract Bug-Eating Birds

Another way to keep bad bugs in check is to attract birds that feast on insects. Bugs from soil-dwelling grubs to codling moths provide a feast for chickadees, robins, wrens, swallows and other bug-eating birds.

Attract these beneficial birds by growing a mix of nectar, seed and fruit-bearing plants.

For example, cosmos, asters, zinnias, sunflowers and other seed-bearing annuals or perennials attract a variety of songbirds that feast on insects. And tubular- or bell-shaped flowers rich in nectar—such as bee balm, pineapple sage, nicotiana, verbena and salvia—lure in hummingbirds, which also dine on caterpillars and small insects.

Companion planting is all about diversity, which is key to any healthy garden. So, go ahead and experiment with your own neighborly plantings. Grow flowers and herbs among your vegetables, and tuck a variety of vegetables in your flower bed. The result is bound to be a more beautiful, sustainable and bountiful garden.

Kris Wetherbee specializes in writing about gardening, food and outdoor living. Her publishing credits include over 60 regional, national and international magazines.



Marigolds, shown with parsley, contain thiopene, which is toxic to certain soil-dwelling nematodes (roundworms).

A Sampling of Beneficial Garden Companions

Basil – lettuce, peppers, tomatoes; enhances growth, repels flying insects

Beans – cabbage family, corn, eggplant, lettuce, marigolds, petunias, potatoes; deters potato beetles, fixes nitrogen

Calendula – cabbage family, corn, lettuce; attracts minute pirate bugs and lacewings

Carrots – lettuce, marigolds, onions, parsley, tomatoes; keep away from dill

Cabbage family – aromatic herbs, chamomile, marigolds, onions, nasturtiums, potatoes; keep away from strawberries and tomatoes

Cucumbers – lettuce, nasturtiums, onions, peas, petunias, radish; keep away from sunflowers and potatoes

Lettuce – compatible with most garden plants

Marigolds – all garden plants; repels aphids, potato and squash bugs, massings kill nematodes

Onions – most garden plants, except peas and beans; deters many pests, masks plant odors

Petunias – eggplant, grapes, greens, squash; plant with any vegetable bothered by leaf hoppers

Peas – carrots, corn, cucumbers, potatoes; keep away from onions; fixes nitrogen

Peppers – basil, carrots, onions, parsley; keep away from fennel

Radish – especially carrots, cucumbers, squash; repels cucumber beetles

Squash – nasturtiums, onions, petunias, radish; keep away from cucumbers and melons

Tomatoes – basil, carrots, chamomile, marigolds; keep away from fennel and potatoes

College, Connections, Career!

Networking tips to help college grads land their first job.

College graduation season is coming, launching a new crop of young adults seeking their first “real” job. But, today’s high unemployment rates make that search a daunting challenge.

There is both good and bad news for recent grads looking for work, says Maribeth Kuzmeski, author of “The Connectors: How the World’s Most Successful Businesspeople Build Relationships and Win Clients for Life” (theconnectorsbook.com).

The good news: They’re more adept than their older counterparts at using the internet and social media to find job opportunities. The bad news: They lack the networking and communication skills that older job seekers have honed over the years.

Kuzmeski helps clients develop communication and relationship skills and offers advice for how new grads can network their way to a great new job.

Rejuvenate your résumé. Consider including some eye-catching, informative headlines, and make the most of every college experience by including information on internships, relevant class assignments, and club leadership positions. “Make sure your résumé is something an employer would want to read,” she says.

Use social media. According to a 2012 Social Job Seeker Survey by Jobvite.com, 88 percent of job seekers have at least one social networking profile, and 44 percent have them on all three: Facebook, LinkedIn, and Twitter.

Get face-to-face with potential employers! At a time when so much of the pre-hiring process is online, it is essential that you find a way to communicate with potential employers face-to-face. Drop off a follow-up note or a résumé in person, or stop by an interviewer’s office the next day with an interesting article. “Establishing this face time is sure to set you apart from your competition,” Kuzmeski says.



Make an impact by using video. Use a video to get an interview or as a follow-up. Carefully script and record a message (1 to 2 minutes) using a smart phone camera or webcam. Post it on YouTube and include the link when emailing a résumé or a post-interview thank-you note. Some extra tips:

1. Introduce yourself, and identify the job you want to be interviewed for.
2. Tell three things about your background that might tempt the employer to interview you.
3. Thank them for watching, and ask for the interview!
4. Focus on professionalism—not entertainment. Make sure both you and your background appear professional.

Focus on connectors. The goal of networking is to build mutually beneficial relationships with people who might never be able to give you a job, but may know someone who can. List the contacts who are the most important or closest to you. Don’t rule out family members, friends and neighbors that may be the most willing to help. Of those contacts, highlight those who know the people you want to know. “By connecting with other great connectors, you are able to widen your reach,” Kuzmeski says.

Let others do the talking. Don’t indulge in nervous chatter. Be prepared to listen and arm yourself with a (mental) list of questions to help you get conversations going. For example, you might ask, “What’s the best thing that happened to your business this year?” or “What’s one thing you’ve done that has really changed your career?”

Pitch yourself in 15 seconds. No one (except your mom!) wants to hear a long list of your accomplishments. Instead, prepare a short pitch that hits your high points and top skills. Include what’s unique about what you’ve done and what will help you stand out from other job seekers.

Get involved in professional groups. Attend trade shows and seminars and join organizations connected to the profession you want to enter. Take hard copies of your résumé to events. The more people within your profession that know you, the better.

Volunteer. If you want a marketing job, volunteer to work with the PR director at a nonprofit, or if accounting is your thing, volunteer your financial expertise. Volunteering allows you to learn from professionals and show potential employers that you’re a motivated worker.

Be a mover and shaker. Force yourself outside your comfort zone. Don’t just hang out with the people you already know; introduce yourself to new people and find out as much as you can about them. The more you move around, the more connections you will make.

Always network. Capitalize on all the connections you make in everyday life—network on airplanes, at social gatherings, and in the grocery store line.

Pick up the phone. While communicating by email may be your preferred method, a good rule is to match whatever method of communication your potential connection is using. Ask interviewers if it is okay to call with questions after the interview. You might also call after-hours to leave a thank-you voicemail—a nice way to let employers hear your enthusiasm without taking up too much time.

“By focusing on networking, you open yourself up to many more opportunities than just the ones you see on job boards or at job fairs,” says Kuzmeski. Every time you make a new connection, you get that much closer to getting your dream job.”

Linda Wacyk is a regular Country Lines freelance writer, educator, grandmother and content empy-nester.



Jewelry With a Past

Creative keepsakes made from broken dishes.

In a thick binder filled with photos of Lois Miller's work, every pitcher tells a story. As does every dinner plate, serving platter, cup and saucer that she transforms from a piece of china with sentimental value into wearable art.

"I could sit and tell you stories for an hour," Lois says about the Vintage Keepsake Jewelry she and her husband Keith create in a pole barn studio at their southwest Michigan home in Edwardsburg.

One grandmother delivered to Lois the remains of a Belleek bowl and asked her to turn bits of the Irish serving dish into jewelry as gifts for all her grandchildren—including the youngster who accidentally shattered it. An especially moving custom order was from a Hurricane Katrina victim who found some of her wedding china in the rubble. Lois preserved it as jewelry that would help the woman recover from her tremendous loss.

Using a diamond grinder and diamond-blade bandsaw, Lois cuts sections of porcelain, pottery, bone china and other tableware into hearts, ovals and rectangular or free-form shapes. Then, with a soldering iron she frames each piece in a fine thread of silver and adds the findings to create pendants, earrings, bracelets, brooches, cuff links and key rings.

beautiful jewelry. For collectors who recognize the design, there's a "Wow!" factor, Lois says. "It really stands out." And, while using Flow Blue is one of her trademarks, the china pieces are increasingly difficult to find and, "Now they are out-of-this world expensive."

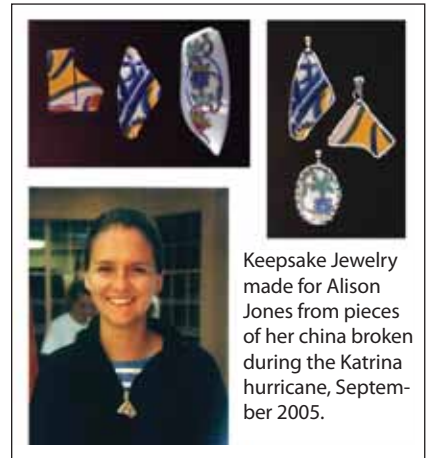
Lois hunts for other unusual patterns on eBay, including horse images, which make in-demand pieces at an art show she participates in just prior to the Kentucky Derby in Louisville. She is also known for making jewelry from calendar plates, and her stock of that specialty china currently spans about 20 years. A specific month framed in silver as a pendant or charm is a commemorative piece, she says, "Perfect for a wedding anniversary, birthday or other special date."

Lois says she's always been creative. "I have the kind of mind that is always thinking of things to do," including quilting, sewing, decoupage, refinishing furniture, and making one-of-a-kind gifts for her grandchildren. But many years ago, when she first saw jewelry that incorporated china, "I was spellbound," she says. "I thought it was the most beautiful thing."

Soon she learned to craft the jewelry herself. In designing each piece she studies the



Lois Miller



Keepsake Jewelry made for Alison Jones from pieces of her china broken during the Katrina hurricane, September 2005.



Fiesta Ware bracelets

Austrian handpainted violet china



Grandmother's wedding teacup



Blue Rose wedding plate set



Blue ashtray

Lois has been making jewelry for 16 years and a decade ago Keith, who worked for Whirlpool, joined her with his own line of antique silverware bracelets. He sometimes includes charms that Lois has made, and also turns silver knife handles into handsome writing utensils.

Besides making custom jewelry from family treasures, Lois scours the internet for interesting patterns and tableware, including English Flow Blue China. The cobalt blue-on-white pieces were popular in the 1800s and the dreamy designs make strikingly

china pattern, sketches possible interpretations, and decides on the look of the silver frame: A sleek silver outline is compatible with a modern design, but for more old-fashioned or flowery designs she adds a beaded, decorative trim.

Although Lois participates in occasional art fairs and shows, the main outlet for the couples' work is their website at VintageKeepsakeJewelry.com. Pendants are

the most popular items, and her jewelry ranges in price from \$20 to \$70. Special orders (269-663-3061) vary, and usually take about two weeks.

It is the custom pieces and the stories behind them that Lois really treasures. As she transforms broken dishes into attractive accessories, she is also preserving history and memories "for all those people that ate off their china and everybody in the family that sat at the table."

Brunch

If you can't decide between breakfast and lunch, have both! With these sweet and savory recipes, there's a little something for everyone, giving you the perfect combination of breakfast and lunch ingredients.



Overnight Caramel Apple French Toast

Overnight Caramel Apple French Toast

1 c. brown sugar
1/2 c. butter
3 T. corn syrup
8 apples, peeled and chopped
1/2 t. cinnamon
10-12 slices French bread
2 c. milk
2 t. vanilla
1/3 c. sugar
5 eggs, beaten

Bring brown sugar, butter and corn syrup to a boil, stirring constantly; add apples and cinnamon. Cook until it begins to thicken. Pour into a greased 9x13-inch pan. Place bread slices in another pan. Combine milk, vanilla, sugar and eggs, and pour over bread. Refrigerate both pans overnight. Remove from refrigerator 30 minutes before baking. Place bread slices over caramel apple mixture. Bake at 375° for 35-40 minutes, or until a knife inserted in center comes out clean.

Ellen Yoder, Scottville

Sweet Sausage Rolls

1 8-oz. tube crescent rolls
24 miniature smoked sausages
1/2 c. melted butter
1/2 c. chopped pecans
3 T. honey
3 T. brown sugar

Cut each roll into three triangles. Roll a sausage tightly into each triangle. Combine remaining ingredients and pour into a 11x7x2-inch baking dish. Put sausage rolls seam-side down in butter mixture. Bake at 400° for 15-20 minutes, uncovered, until golden brown.

Bonnie Bourn, Constantine

Fancy Brunch Sprouts

1 1/2 lbs. brussel sprouts, trimmed and halved
1 1/2 T. margarine or butter
1 shallot, finely chopped
1 clove garlic, crushed
1/4 t. pepper
1 t. sugar
2 T. white vinegar
1/2 c. low sodium broth
1 lb. bacon, fried and crumbled
1/2 c. slivered almonds

Cover sprouts with water in large pan. Boil 5 minutes; remove and drain. In same pan, combine butter, shallot, garlic, pepper, sugar, vinegar and broth. Add bacon and sprouts to pan and boil until almost dry. Top with almonds; serve hot. Goes well with scrambled eggs. Serves 8.

Fred Black, Sandusky

Broccoli Quiche

2 10-oz. pkgs. frozen, chopped broccoli
4 beaten eggs
1/4 c. half-and-half
3 T. melted butter
1/4 t. minced onion
3/4 c. grated parmesan cheese, divided
1 9-in. deep dish unbaked pie shell

Cook broccoli for 4 minutes in water; drain. Combine with eggs, half-and-half, butter, minced onion and 1/2 cup cheese; mix well and pour into pie shell. Sprinkle top with remaining cheese. Place on cookie sheet and bake at 350° for 30 minutes, or until knife inserted in middle comes out clean. Cool at least 5 minutes before cutting.

Cora Kuiper, Grand Rapids

My Favorite Scones

1 1/4 c. whole wheat flour
2 c. all purpose flour
3/4 c. sugar
1 t. baking soda
2 1/2 t. baking powder
2 1/2 c. rolled oats (old fashioned, not instant)
1 c. chopped dried cherries
1 c. roasted pecans (optional)
2 1/2 sticks chilled butter, cut into 1 1/2-inch squares
2/3 c. buttermilk
heavy cream or half-and-half
sugar

Mix the first five ingredients together. Add oats, cherries and pecans; cut in butter, then add buttermilk. On counter or waxed paper, form heavy dough into rectangle (16 x 3 1/2 x 1 1/2 inches). Wrap in plastic wrap and chill in freezer for two hours. Cut into smaller rectangles, then in half to make triangles; place on parchment lined baking sheet. Brush with heavy cream or half-and-half and sprinkle with sugar. Bake at 350° for 30 minutes, until beginning to brown on top and bottom.

Lois Barnum Phelps, Stanwood

Cheesy Amish Breakfast Brunch

3 c. frozen hash browns, thawed
1 c. cottage cheese
1 small sweet onion, chopped
9 eggs, lightly beaten
1 lb. bacon, cooked and chopped
2 1/2 c. cheddar cheese, shredded
1 c. Swiss cheese, shredded

Mix all ingredients together and pour into greased 9x13-inch glass baking dish. Bake at 350° for 45 minutes. Serves 8 to 10.

Carole Buskirk, Dowagiac

Photography by: 831 Creative

Spinach Pie

1 lb. feta cheese, crumbled
1 lb. cottage cheese, small curd
4 pkgs. frozen chopped spinach, defrosted and drained very well
1/2 t. nutmeg
8 eggs, beaten
1 box phyllo dough
1 stick butter, melted

Mix feta cheese, cottage cheese, spinach, and nutmeg; add eggs and mix well. Keep damp cloth over phyllo while making pie. Brush bottom of a 14x10-inch pan with butter. Place seven layers of phyllo into pan, brushing each layer with butter. Spread filling over bottom layers. Place seven more layers of phyllo on top, again brushing each layer with butter. Bake at 350° for 40-45 minutes. Cut into squares. Serve warm or at room temp.

Leigh Gaskin, Grawn

Brunch Enchiladas

2 c. ham, cubed
1/2 c. chopped green onions
10 8-in. flour tortillas
2 c. cheddar cheese, shredded, divided
1 T. all purpose flour
2 c. half-and-half
6 eggs, beaten
1/4 t. salt

Combine ham and onions; place 1/3 cup down the center of each tortilla and top each with 2 tablespoons cheese. Roll up and place seam-side down in a greased 13x9-inch baking dish. In a bowl, combine flour, cream, eggs and salt until smooth; pour over tortillas. Cover and refrigerate for 8 hours or overnight. Remove from fridge 30 minutes before baking. Cover and bake at 350° for 25 minutes; uncover and bake for 10 minutes. Sprinkle with remaining cheese; bake for 3 more minutes, or until cheese melts. Let stand 10 minutes before serving. Makes 10 enchiladas.

Janice L. Thompson, Martin

Sausage Bread

1 loaf frozen bread dough
2 eggs, whipped
1 lb. sausage in tube, cooked, drained and crumbled
1/2 c. parmesan cheese

Thaw bread according to package. Allow it to double rise. Roll out to about 1/2-inch thick circle on a floured surface. Mix cooled sausage, eggs and cheese together and spread on bread dough, making sure sausage mixture is all the way to the edge of the circle. Roll-up and place on greased cookie sheet. Cover lightly with foil. Bake at 350° for about 30 minutes. Remove

foil and bake for an additional 10 minutes, or until golden brown. Remove from oven and spread top and sides with butter or margarine, if desired. Slice and enjoy!

Mary Ann Schultz, Scottville

Asparagus Fritters

2 lbs. asparagus, blanched and cut into 1-inch pieces

1 1/2 c. flour
4 T. parmesan cheese
1 c. milk
pinch of salt

4 eggs
Blend all ingredients together, adding asparagus last. Fry in butter or oil, like pancakes. Serve with applesauce or sour cream.

Marcia Scully, Atlanta

Baked French Toast with Maple Praline Topping

1 loaf day-old French bread
8 large eggs
2 c. half-and-half
1 c. milk
2 T. granulated sugar
1 t. pure vanilla extract
1/4 t. ground cinnamon
1/4 t. nutmeg
dash salt

Maple Praline Topping:

1 c. butter, room temperature
1 c. light brown sugar
1 c. chopped pecans
3 T. pure maple syrup
1/2 t. ground cinnamon
1/2 t. ground nutmeg

Cut bread into 16 1-inch thick slices, ends discarded. Lay slices in a 13x9-inch baking dish in two rows lengthwise, overlapping as necessary. In a large bowl, whisk eggs until blended but not frothy; add half-and-half, milk, sugar, vanilla extract, cinnamon, nutmeg, and salt; whisk to blend well. Pour egg mixture over bread; cover and refrigerate overnight. For topping, cream butter and brown sugar together; add pecans, maple syrup, cinnamon, and nutmeg; stir until ingredients are well combined. Cover and refrigerate overnight. To bake, place topping in a microwave-safe bowl and microcook on high (100 percent power) for 20 seconds. Stir mixture and spoon over French bread and egg mixture. Bake at 350°, uncovered, for 40 minutes or until golden. Serve with additional warmed maple syrup.

Marilyn Partington Frame, Traverse City

Hash Brown Quiche

4 c. frozen hash browns, thawed
5 T. butter, melted
2 large eggs, beaten
1/2 c. half-and-half
1 t. seasoned salt
1/2 t. black pepper
1 c. mozzarella cheese, shredded
1 c. Swiss, colby or cheddar cheese, shredded
1 c. diced ham

Preheat oven to 425°. Press hash browns into a 9-inch quiche or pie pan. Blot with paper towel to remove all moisture. Brush with melted butter. Bake for 25 minutes, or until crust just begins to brown; remove from oven. Reduce heat to 350°. Combine

eggs, half-and-half, salt and pepper in a bowl and whisk well. Place cheese and ham into the potato crust and pour egg mixture over top. Bake another 40 minutes, or until eggs have set; remove from oven. Cool and cut into wedges to serve.

Marcia Leroue, Conway



SUBMIT YOUR RECIPE! Contributors whose recipes we print in 2013 will be entered in a drawing to win a prize: *Country Lines* will pay their January 2014 electric bill (up to \$200)! The 2013 winner will be announced in the Jan. 2014 issue.

Thanks to all who sent in recipes! Upcoming: Please send **BERRY** recipes by April 10 and **UNDER THE SEA** recipes by May 10. Mail to: *Country Lines Recipes*, 2859 W. Jolly Rd., Okemos, MI 48864; or email recipes@countrylines.com.

Here's What About

50¢

Will Get You...



About 50¢ a Month Makes a Difference to Your Northern Michigan Neighbors in Need.

So far, 4,000 of you have signed up for Operation Round Up, rounding your electric bill up to the next dollar. That generosity provided much-needed funding to dozens of local organizations in the last year. Plus, just for signing up you'll be entered to win \$50!

♥ Share the Love and Win \$50

Sign up at: facebook.com/cherrylandelectriccoop or on our website at: cherrylandelectric.com/cherrylandcares.



**I'm so glad we
have food tonight.**

Your donation
made the difference.
Thank you!

Cherryland Electric Cooperative 



Cherryland Offers Scholarships



Cherryland offers two scholarships each year—one worth \$4,000 for a high school senior and another \$500 for an adult scholarship (post high school).

HIGH SCHOOL SENIORS: High school seniors whose parents or guardians currently receive monthly electric service from Cherryland and live in our service area may apply for the \$4,000 college scholarship (\$1,000 for each of four years).

Selection is based on grade point average, extracurricular activities, community involvement and/or after school employment. A minimum required GPA is 2.75 on a 4.0 system. To continue receiving the scholarship, a student must maintain a minimum college course load of 12 credits per term or semester, and receive a 2.5 GPA or higher. Students may apply by contacting your high school guidance counselor; or contact Nick Edson, communications coordinator at Cherryland, as noted below.

ADULTS: You must also be a Cherryland member to apply for the \$500 Adult Education Scholarship.

The scholarship goes toward covering the cost of a course or courses taken in a calendar year, and will be awarded on the basis of need, grades and community service. It is a one-time award.

Members may request an application for either scholarship by emailing Nick Edson at nicke@cecelec.com (please include your name and address), call him at 486-9222, or write him at Cherryland Electric Cooperative, 5930 U.S.-31 South, Grawn, MI 49637.

You Can Serve on Cherryland's Board

Any qualified Cherryland Electric Cooperative member can be elected to serve on the co-op's board of directors.

To be nominated in 2013, candidates can file a petition with the cooperative's administrative assistant beginning the first day of March and up until 4 p.m. on the last business day of March.

Nominating petitions shall be signed by at least 25 active members of the cooperative, in good standing, and all signatures must be obtained within 60 days prior to the date the petition is filed.

Nominating petitions shall be in the form prescribed by the board and are available at Cherryland's headquarters in Grawn. The nominating petitions must specify the geographic service area for which the candidate is being nominated.

The term of office is three years. Three directors will be elected at this year's annual meeting, which will be held Thursday, June 6, at Wuerfel Park. This year's directors will represent Benzie, Wexford and Manistee counties, plus two at-large positions.

Nominees must meet the director qualifications set forth in the bylaws under Section 2 of Article III. Any member interested in becoming a candidate is invited to visit the cooperative's office and learn about the duties performed by directors.

In the event no qualified candidate is nominated to fill the vacancy of a director whose term has expired, the newly elected board will appoint sufficient directors to fill the vacancies. The election will be by majority vote of the board and must be done within 60 days of its first meeting.

Directors elected in this manner will serve until the next annual meeting, when the members will be given an opportunity to fill the balance of the regular three-year term.

The term of office is three years.

Cherryland Cares Seeks Grant Applications



Area nonprofit agencies who are seeking financial help can apply for a grant through the Cherryland Cares Program.

Cherryland Cares is a five-member board, made up of Cherryland Electric Cooperative members, who distribute money from Operation Round Up to area nonprofits. The deadline for applications is Friday, *March 8*. The next quarterly meeting of Cherryland Cares is Monday, *March 18*.

Operation Round Up money comes from Cherryland members who elect to "round up" their bills to the nearest dollar every month. This amount averages \$6 per year.

To receive a grant application or join Operation Round Up, contact Nick Edson at 231-486-9222 or by email at nicke@cecelec.com.

Pay Your Bill Online

You can pay your electric bill online and set up your accounts to get only an email bill—no more paper bills.

To do this, access your account on the co-op website at cherrylandelectric.com. It will prompt you immediately after you sign in to make a decision on whether or not you want the paper bill to continue; if you do, check the box. If not, simply press "Update."

Questions about the online payment can be answered by Cherryland's Member Service Department at 486-9200.

All scholarship applications are due by Friday, April 5.

Improving Transmission Reliability a Priority for Wolverine



Wolverine rebuilt its transmission substation in Portland in 2012.

Wolverine Power Cooperative continues to work closely with its member cooperatives to ensure reliable and safe delivery of electricity across its 1,600-mile transmission system.

During the fall months each year, Wolverine staff meets with engineers from Cherryland Electric Cooperative, Great Lakes Energy, HomeWorks Tri-County Electric Cooperative, and Presque Isle Electric & Gas Co-op, to discuss projects requiring immediate attention, as well as long-term transmission planning.

“We identify transmission improvements across a five-year span of time,” explains Danny Janway, Wolverine’s vice president of engineering and operations. “Our list of potential projects is prioritized, but subject to change from year-to-year to reflect shifting or new electric load or reliability concerns.”

The five-year work plan for the years 2013 through 2017 identifies upgrades or new construction of 185 miles of line on Wolverine’s transmission system, seven transmission substations, and nine distribution substations.

“Once transmission projects are selected for the five-year work plan, we discuss solutions collectively to determine whether an upgrade will address work identified or a complete rebuild is needed,” Janway says.

Line rebuilds for the next five years are concentrated in the southwestern portion of the Lower Peninsula. The seven transmission and nine distribution substations in the 2013–2017 work plan are located in the service areas of Cherryland, Great Lakes, HomeWorks and Presque Isle. Wolverine’s newest member-cooperative, Midwest Energy Cooperative, currently owns and maintains its own distribution system, which is separate from Wolverine’s transmission facilities.

Extension Granted for WCEV Air Quality Permit

The Michigan Department of Environmental Quality (MDEQ) approved an 18-month extension for the Wolverine Clean Energy Venture (WCEV) air quality permit in late 2012. This extension gives Wolverine until June 29, 2014, to commence construction of the proposed 600-megawatt power plant at a site near Rogers City.

Wolverine is continuing development of the WCEV in 2013, although work on the project will be limited. The co-op will focus on legal defense of the air quality permit and monitor regulatory and political developments.

Get the Facts Before Installing Solar Water Heater

Harnessing sunshine may reduce your water heating bill, but visit the options first to find the best system.

Q: *With two teenage daughters who take long showers, our water heating costs are high. Does using solar water heating make sense? What are my solar options, and is there a system I can make myself?*

A: For a typical family of four, water heating can account for about 20 percent of annual utility bills. With family members taking long showers, yours may be a bit higher, but don't expect a solar system to cut your costs to zero. A target savings of 50 percent often provides a good economic payback.

Before considering solar or any other efficient water heating, install low-flow shower heads with shut-off tickle (lathering) valves, and talk with your family about taking shorter showers.

The two basic systems are "active" and "passive." Active systems need a storage tank and electric pumps and controls to function. Sometimes 12-volt pumps can be powered by a photovoltaic solar panel located near solar water heating collectors on the roof.

In cold climates, the system must have some type of antifreeze fluid and a heat exchanger so it doesn't freeze in winter. Other systems that circulate actual potable water through the collector need a draining system to empty the collectors at night during winter.

Passive systems rely on the natural upward flow of less-dense warm water to move the water through the solar collector. With these systems, the warm water storage tank is located above the collector—usually on the roof or in the attic, so there are structural considerations. These cost less than more sophisticated active systems, but they tend to be less efficient, especially in cold weather.

There are many types of solar collectors. The best one for your house depends on your climate, hot water needs, and budget. They can be as simple as black copper tubes in an insulated box with a glass top, to those with vacuum tubes, concentrating reflectors and heat pipe technology. Discuss the various types with a solar contractor.

Unless you are an accomplished craftsman, I suggest building a passive system. Trying to build an active system—with collectors on the roof, plumbing and control systems, and storage tanks—is beyond the skill level of most homeowners. I am a design mechanical engineer, and I doubt I could build a system myself from scratch.

If you do choose the active system, get one with an OG-300 rating from the Solar Rating and Certification Corporation (solar-rating.org). A knowledgeable, qualified installer is important, too—look for contractors certified by the North American Board of Certified Energy Practitioners (nabcep.org). Also check the Database of State Incentives for Renewables and Efficiency (dsireusa.org) for local solar installation incentives, in addition to the federal tax credit. Be sure to review the requirements on system types, size, certifications, installers, and other details to make sure yours qualifies.

Otherwise, try building a passive "batch" system, which is a pre-heater for your existing water heater, with the simplest design called a "breadbox." It uses a horizontal metal water tank inside a box with a clear top. The sun shines through to heat the water. A slightly more efficient option uses a tall box angled toward the sun. This allows the warmer water to be drawn first from the top of the tank.

You can buy a stainless steel water tank that's designed for this application with inlet and outlet water fittings. If you can find an older water heater that's not leaky, strip off the metal skin and insulation to use the inner tank. Paint it flat black to absorb more of the sun's heat.

It also helps to insulate the solid sides and

If you have a question for Jim, please email jdulley@countrylines.com, or mail to James Dulley, Michigan Country Lines, 2859 W. Jolly Rd., Okemos, MI 48864. Be sure to let us know which electric co-op you receive service from.

Visit dulley.com for more home improvement and do-it-yourself tips.



This do-it-yourself solar water heating kit uses a batch design to preheat incoming cold water.

For more details:

▲ find-solar.org for an installer directory and calculator to estimate solar and PV system performance.

▲ energy.gov/energysaver/articles/solar-water-heaters has graphics showing various designs.

▲ energy.gov/energysaver/articles/siting-your-solar-water-heating-system has other resource links.

These companies offer solar kits and components:

▼ **Alternative Energy Store**, 877-211-8192, altestore.com

▼ **Build It Solar**, builditsolar.com

▼ **Solar Components**, 603-668-8186, solar-components.com

bottom of the box, especially if you plan to use it most of the year. Very heavy insulation is not needed, as the tank will not get extremely warm, especially if you use hot water throughout the day. One-inch-thick foil-faced rigid foam sheets should be fine. Attach them inside the box to reflect the sun's heat to the tank.

Install water valves and plumbing so the tank can be drained and bypassed during cold weather. Install heavy insulation around any exposed pipes and bury as much as possible underground.

James Dulley is a nationally recognized mechanical engineer writing about home energy issues for the National Rural Electric Cooperative Association.





FOLLOW THESE SAFETY TIPS FROM YOUR ELECTRIC CO-OP:

- ▼ **Assume all power lines are energized and dangerous.** Even downed lines that seem “dead” can be re-energized at any time during power restoration efforts or improper use of generators. Lines do not have to be sparking to be live!
- ▼ **Any utility wire, including sagging or downed telephone or cable lines could be in contact with an energized power line, making them very dangerous, too.**
- ▼ **Never touch a downed line—or a person or object that is touching it!** A downed line can cause things around it to become energized, traveling through the ground to chain link fences or other objects.
- ▼ **If someone is injured from electrical contact, do not try to assist. You could be injured or killed, too. Call 911.**
- ▼ **If lines fall on your vehicle, do not drive away or get out.** Stay inside until utility workers say it’s okay. Warn others to stay away. If you must leave the vehicle—only in the case of fire—jump free without touching the ground and auto at the same time, keeping both feet together, and hop to safety. A live wire touching the ground causes electricity to fan out, and walking or running allows one foot to move from one voltage zone to another. Your body then becomes the electricity’s path, and electrocution results.
- ▼ **Never drive over a downed line,** it could cause poles or other equipment to come crashing down.
- ▼ **Call 911 immediately to report a downed power line.** Then call your electric co-op or the local utility.

Visit SafeElectricity.org for other electrical safety tips.

Fuel Mix Report

The fuel mix characteristics of Cherryland Electric Cooperative as required by Public Act 141 of 2000 for the 12-month period ended 12/31/12.

COMPARISON OF FUEL SOURCES USED

Regional average fuel mix used			
Your co-op's fuel mix			
FUEL SOURCE			
Coal	57.1%	57.9%	
Oil	0.2%	0.4%	
Gas	12.8%	12.2%	
Hydroelectric	1.1%	0.9%	
Nuclear	23.2%	25.0%	
Renewable Fuels	5.6%	3.6%	
<i>Biofuel</i>	0.3%	0.1%	
<i>Biomass</i>	0.2%	0.4%	
<i>Solar</i>	0.0%	0.0%	
<i>Solid Waste Incineration</i>	0.2%	0.5%	
<i>Wind</i>	4.6%	2.2%	
<i>Wood</i>	0.2%	0.5%	

NOTE: Biomass above excludes wood; solid waste incineration includes landfill gas, and wind includes a long-term renewable purchase power contract in Wolverine’s mix.

Your Co-op's Fuel Mix



Regional Avg. Fuel Mix



EMISSIONS AND WASTE COMPARISON

TYPE OF EMISSION/WASTE	lbs/MWh	
	Your Co-op	Regional Average*
Sulfur Dioxide	6.3	7.6
Carbon Dioxide	1,697	2,170
Oxides of Nitrogen	2.1	2.0
High-level nuclear waste	0.0077	0.0083

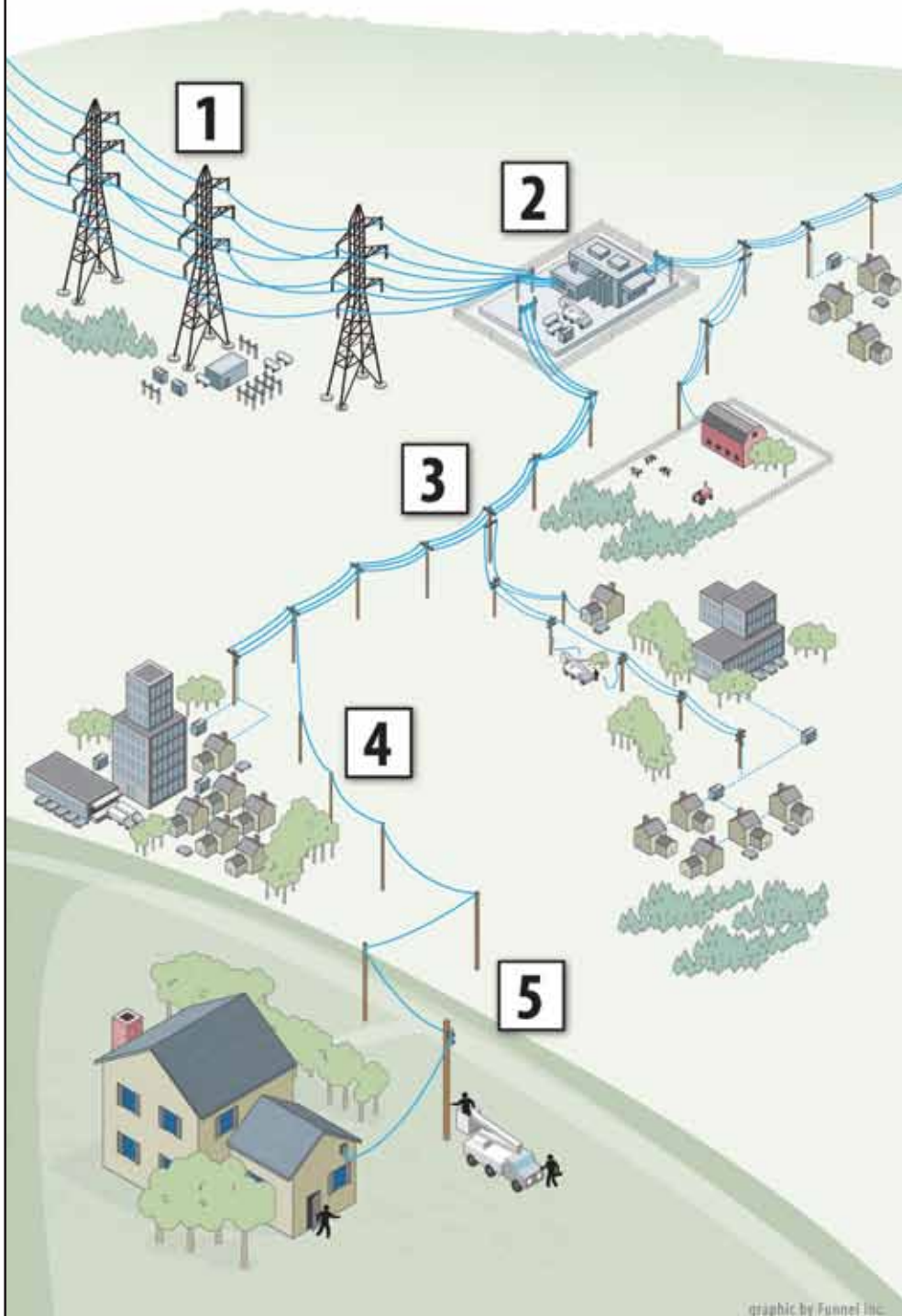
*Regional average information was obtained from MPSC website and is for the twelve-month period ending 12/31/12.

Cherryland Electric Cooperative purchases 100% of its electricity from Wolverine Power Cooperative, which provided this fuel mix and environmental data.

Powering UP

When electricity goes out, most of us expect power will be restored within a few hours. But when a major storm causes widespread damage, longer outages may result. Co-op line crews work long, hard hours to restore service safely to the greatest number of consumers in the shortest time possible.

Here's what's going on if you find yourself in the dark.



1 High-Voltage Transmission Lines

Transmission towers and cables that supply power to transmission substations (and thousands of members) rarely fail. But when damaged, these facilities must be repaired before other parts of the system can operate.

2 Distribution Substation

Each substation serves hundreds or thousands of consumers. When a major outage occurs, line crews inspect substations to determine if problems stem from transmission lines feeding into the substation, the substation itself, or if problems exist down the line.

3 Main Distribution Lines

If the problem cannot be isolated at a distribution substation, distribution lines are checked. These lines carry power to large groups of consumers in communities or housing developments.

4 Tap Lines

If local outages persist, supply lines, called tap lines, are inspected. These lines deliver power to transformers, either mounted on poles or placed on pads for underground service, outside businesses, schools, and homes.

5 Individual Homes

If your home remains without power, the service line between a transformer and your residence may need to be repaired. Always call to report an outage to help line crews isolate local issues.

graphic by Funnel Inc.

Blood and Rumors

I give blood when I can. I'm not going to set any records for donations, but the drops and pints are adding up, and I feel good about doing something good.

For men, there is a lifesaving benefit to this modern bloodletting. We are at higher risk for “iron overload,” a potentially deadly problem where too much iron builds up in the blood. It can lead to heart disease and other major health problems. Donating blood regularly—the Red Cross lets you donate whole blood every 56 days—reduces that iron buildup, which women experience naturally through their periods. That could partly explain why women tend to live longer than men.

Donating blood is safe and healthy. You'll drop about a pound, and get a free mini physical, including blood pressure check, heart rate, temperature and iron levels.

Ironically, I once found out I was anemic through a pre-bloodgiving physical.

I admire the Red Cross, so I was upset when someone told me it sells my blood for \$500 or more to keep its staff highly paid. That didn't seem right to me. Why should the Red Cross make money off the blood I donated? I meant it to be given to people who need it—at no charge. If they sell it, they might as well pay me for it, right?

It turns out that the Red Cross doesn't charge for my blood, nor do they pay people to donate. The misinformation, which continues to circulate like an old joke, is dispelled on their website, redcrossblood.org, where it clearly states:

Since 1960, the Red Cross has been reimbursed by hospitals for the costs associated with providing blood to hospital patients. The Red Cross does not charge for the blood itself that you have so generously donated. The Red Cross only recovers the costs associated with the recruitment and screening of potential donors, the collection of blood by trained staff, the processing and testing of each unit of blood in state-of-the-art laboratories, and the labeling, storage and distribution of blood components. Hospitals may have their own additional charges.

Now that we have the internet and can find the news and information we want to believe, rather than facts that are uncomfortably true, this kind of misinformation is rampant. We're often too ready to believe any goofy

report that somehow validates our preconceived notions of how the world works.

As another example, a friend recently forwarded an email from another friend about an article supposedly printed in the Marquette Mining Journal a few years ago. The article, with all of the weird punctuation and grammar intact, went as follows:

“Up here in the Northern part of Michigan we just recovered from a Historic event --- may I even say a “Weather Event” of “Biblical Proportions” --- with a historic blizzard of up to 44” inches of snow and winds to 90 MPH that broke trees in half, knocked down utility poles, stranded hundreds of motorists in lethal snow banks, closed ALL roads, isolated scores of communities and cut power to 10's of thousands. And guess what; no one howled for the government. FEMA was not called on to send assistance. Our Mayor's did not blame the President or anyone else. Our Governor did not blame anyone either. CNN, ABC, CBS, FOX, or NBC did not visit – or even report on this category 5 snow storm.

“No one looted. Nobody – I mean Nobody demanded the government do something. Nope, we just melted the snow for water. Sent out caravans of SUV's to pluck people out of snow engulfed cars. The truck drivers pulled people out of snow banks and didn't ask for a penny.”

If that tortured text didn't convince you, the email had amazing photos of snow drifts that towered over road crews.

A little research showed that versions of the story have been circulating on the internet for several years.

The “facts” are that the weather report did not come from northern Michigan, nor was it reported in the *Mining Journal*. It can be traced back to an October 2005 snowstorm that hit the Dakotas, Montana and Wyoming. A national weather service report stated the storm was the earliest to hit the area on record. A request did in fact go to FEMA seeking assistance. As for hearty citizens plucking stranded motorists from their cars, that probably did happen, but



Most of us can afford to give up a pint of blood a few times a year. It's good for others and the donor.

the bulk of the digging out fell to police, emergency workers and the National Guard, which were mobilized to help, as often happens following serious weather events. As for the pictures, it turns out they were from the opening of the Trans Labrador Highway in northeastern Canada and were circulating the internet in 2004.

As with many of these shared emails, the combination of distorted fact, exaggeration and government put-down took on a life of its own. It bothers me that we seem eager to embrace this pseudo-journalism and put down the mainstream media, which at least has the virtue of checking facts before reporting them—even if the public doesn't like them.

Here's a fact for you to chew on: 60 percent of the population will need blood at some time in their lives, yet less than 5 percent of the population donates. If discredited rumors about Red Cross mischief is the reason you don't donate blood, please ignore them. One donation can help four people live. I'd say that's a good investment.

Mike Buda is editor emeritus of Country Lines. Email Mike at mike.f.buda@gmail.com or comment on his columns at countrylines.com/column/ramblings.





Designer METAL ROOFING!

Installing Statewide

SHOWCASE HOMES Wanted!

*We would like to use your home to showcase a beautiful American Metal Roof. Qualified homes can earn big discounts off the price of an American. Call today to see if your home qualifies. Call Jenn at:

1-888-221-1869

Note: Not all homes will qualify.

Place your home here!

Rustic in Forest Green

See our Photo Gallery and Find Homes Near You at www.AmericanMetalRoofs.com

Visit the American Metal Roofs Showrooms at

6140 Taylor Dr, Flint, MI 48507 and 1875 Lansing Rd, Charlotte, MI 48813

888-221-1869

Find us on Facebook
fb.me/AMRmichigan



Country Manor Shake in Mustang Brown



Oxford in Forest Green



Rustic in Deep Charcoal

INTRODUCING:

American Metal Roofs Designed for Rural Buildings



Toughness and low maintenance requirements make metal roofing perfect for the demanding needs of agricultural applications. Each roof is hand crafted and finished with custom made trims and accessories by installers with a minimum of 300 hours of training. Available in a variety of colors.



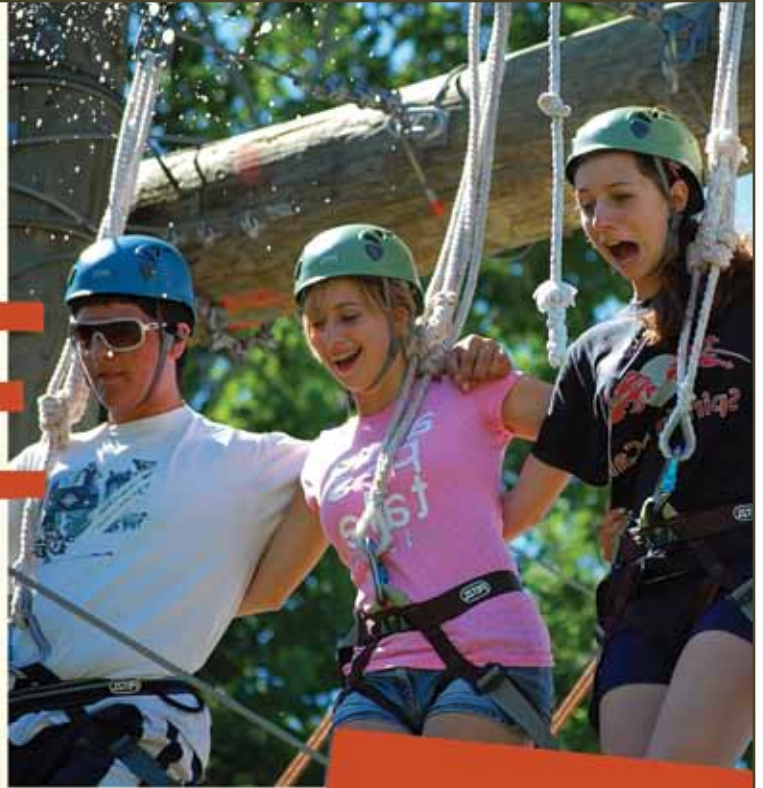
**Promotion may not be combined with any other offers. Some restrictions apply. Call for details. Promotion is based on approved credit. Applies to purchases made on American Metal Roofs consumer credit program. \$232 monthly payment calculations based on a \$20,000 unsecured loan at 7% APR for 10 years.



cherrylandelectric.com

ELEVATE YOUR FUTURE

YOUTH LEADERSHIP SUMMIT
» PRESENTED BY MICHIGAN'S ELECTRIC COOPERATIVES

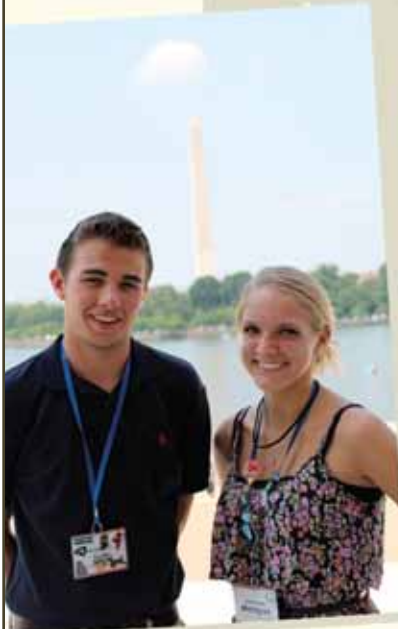


YOU ARE A LEADER. In the classroom, on the team, and in your community, you guide and inspire others to contribute their best efforts. Join other young leaders like you from throughout Michigan at the **YOUTH LEADERSHIP SUMMIT (YLS)**, presented by Michigan's electric cooperatives. This unique, high-energy experience will help you develop your leadership habits, explore career opportunities in the electric industry, and learn how to be actively involved in the democratic process. **YOU ARE THE FUTURE.**

miYLS.com



» SCAN THE QR CODE WITH YOUR SMARTPHONE TO LEARN MORE, OR TO APPLY ONLINE



» PARTICIPANTS WILL BE CONSIDERED FOR AN ALL-EXPENSES-PAID WASHINGTON, D.C., YOUTH TOUR. VISIT miYLS.com TO LEARN MORE.