

# MICHIGAN COUNTRY LINES



## Backyard Beekeeping:

What's the Buzz About?

### Plus!

- 4 Annual Meeting Highlights & Prize Winners
- 10 Jack Barnwell Is Mackinac's Master Gardener
- 13 Prevent Deadly Shocks—Check Your Boats & Docks





Thanks to the 30% federal tax credit, a flood of inexperienced, questionably trained dealers are now offering geothermal. While some companies allow *anyone* to sell their products, WaterFurnace requires an ongoing commitment to the most extensive training and education programs in the industry. WaterFurnace only invests in dealers who are passionate about offering the finest in products and service, and are less concerned with simply being the cheapest. That's why WaterFurnace is the most recognized and respected name in residential geothermal. Or maybe it's because WaterFurnace units use the clean, renewable energy found in your backyard to provide savings up to 70% on heating, cooling and hot water. Or is it thanks to the industry's best warranty? Decide for yourself. Contact your local WaterFurnace dealer for more information, or be prepared to deal with a flood of your own.

YOUR LOCAL WATERFURNACE DEALERS

**Bad Axe**

B & D Htg  
(989) 269-5280

**Berrien Springs**

WaterFurnace  
Michiana  
(269) 473-5667

**Big Rapids**

Stratz Htg & Clg  
(231) 796-3717

**Caro**

AllTemp Comfort, Inc.  
(866) 844-HEAT  
4328

**Carsonville**

Certified Temperature  
Innovations  
(810) 300-7748

**Clifford**

Orton Refrig & Htg  
(989) 761-7691

**DeWitt**

S & J Htg & Clg  
(517) 669-3705

**Grand Rapids**

Total Comfort  
Resource, LLC  
(616) 406-3182

**Hart/Ludington**

Adams Htg & Clg  
(231) 873-2665

**Indian River**

M & M Plbg & Htg  
(231) 238-7201

**Ionia**

Home Experts  
(800) 457-4554

**Jackson**

Comfort 1 Htg/  
Lenawee Htg  
(517) 764-1500

**Kalkaska**

Kalkaska Plbg & Htg  
(231) 258-3588

**Lapeer**

Porter & Heckman  
(800) 445-4328

**Mount Pleasant**

Walton's Htg & Clg  
(989) 772-4822

**Muskegon**

Adams Htg & Clg  
(231) 873-2665

**Muskegon**

Kiessel Geothermal  
Htg & Clg  
(231) 747-7509

**Onaway**

Standard Htg  
(989) 733-8309

**Palms**

Lakeshore  
Improvements  
(989) 864-3833

**Portland**

ESI Htg & Clg  
(517) 647-6906

**Traverse City**

Geofurnace Htg  
& Clg  
(231) 943-1000

**Traverse City**

D&W Mechanical  
(231) 941-1215

**UPPER PENINSULA**

**Manistique**

Hoholik Enterprises  
(906) 341-5065

**Marquette**

J Goods Plbg & Htg  
(906) 235-5788

**Marquette**

Swick Plbg & Htg  
(906) 228-3400

**Sault Ste Marie/Kinross**

Great Lakes  
Services Inc.  
(906) 632-5543



**7 Series**  
The ultimate comfort & efficiency



visit us at **waterfurnace.com**

©2014 WaterFurnace is a registered trademark of WaterFurnace International, Inc.

**July/August 2014**  
**Vol. 34, No. 7**

*Executive Editor*

**Casey Clark**

*Editor*

**Gail Knudtson**

*Publisher*

**Michigan Electric  
Cooperative Association**

*Design and Layout*

**Ciesa Design**

**Michigan Country Lines**, USPS-591-710, is published monthly, except August and December, with periodicals postage paid at Okemos, MI, and additional offices. It is the official publication of the Michigan Electric Cooperative Association, 2859 W. Jolly Rd., Okemos, MI 48864.

**Subscriptions** are authorized for members of Alger Delta, Cherryland, Cloverland, Great Lakes, HomeWorks Tri-County, Midwest Energy, Ontonagon, Presque Isle, and Thumb electric cooperatives by their boards of directors. Subscriptions for nonmembers are \$6 per year.

**POSTMASTER:** SEND ALL UAA TO CFS.

**Letters to the editor** should be sent to Country Lines, 2859 W. Jolly Rd., Okemos, MI 48864. Phone 517-913-3531. **Email:** gknudtson@meca.coop.

Association officers are **Ken Swope**, Midwest Energy, chairman; **Robert Schallip**, Cloverland, 1st vice chairman; **Jon Zickert**, Cherryland, 2nd vice chairman; **Eric Baker**, Wolverine Power, secretary-treasurer; and **Tony Anderson**, Cherryland, past chairman. **Craig Borr** is president and CEO.

Unsolicited letters, photos and manuscripts are welcome. *Country Lines*, however, will not be responsible for their safe keeping or return.

**The appearance of advertising does not constitute an endorsement of the products or services advertised.**

**Change of Address:** Please notify your electric cooperative. See page 4 for contact information.



# IN THIS ISSUE



6

## HOME COOKING

Pack A Perfect Picnic

*Christin McKamey & Our Readers*



Photo—Touchstone Energy

7

## OUR ENERGY

Energy Saving Tips for  
Manufactured Homes

*Bob Pfeiffer*



10

## FEATURE

Mackinac Island's  
Master Gardener

*Neil Moran*



13

## SAFETY

Water & Electricity:  
Keep Safe Near  
Boats, Docks



14

## READERS' PAGE

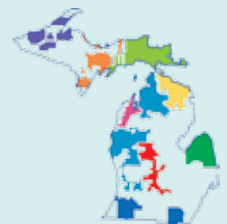
Jack's Journal:  
Mac Woods Dunes,  
Mystery Photo,  
Deer Blind Contest!

## ON THE COVER\*

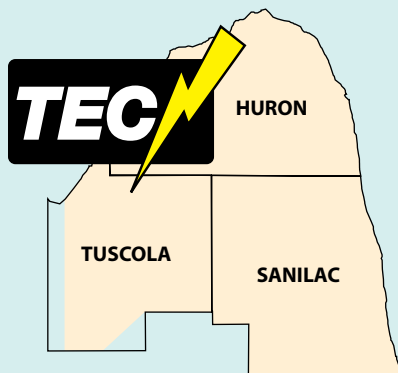
Jack Barnwell and his crew are responsible for creating many of Mackinac Island's wonderful gardens and landscaping layouts. And, it's accomplished without motorized vehicles.

Photo—Ian Smithers

*\*Some co-op editions have a different cover.*



Michigan's Electric  
Cooperatives  
[countrylines.com](http://countrylines.com)



## Thumb Electric Cooperative

2231 Main Street  
Udly, MI 48475-0157  
1-800-327-0166 or 989-658-8571  
E-mail: [tec@tecmi.coop](mailto:tec@tecmi.coop)  
[www.tecmi.coop](http://www.tecmi.coop)

## BOARD OF DIRECTORS

### HURON COUNTY

**Randall Dhyse** Treasurer  
Kinde

**Beth McDonald** Secretary  
Bad Axe

**Donald Wolschleger** Vice President  
Harbor Beach

### SANILAC COUNTY

**Lynn Morell** Director  
Udly

**Kim Nunn** Director  
Croswell

**Duane Kursinsky** Director  
Sandusky

### TUSCOLA COUNTY

**Carl Cousins** Director  
Millington

**Karl DeSimpelare** Director  
Unionville

**Louis Wenzlaff** President  
Kingston

**Dallas Braun** General Manager

## PAYMENT STATIONS

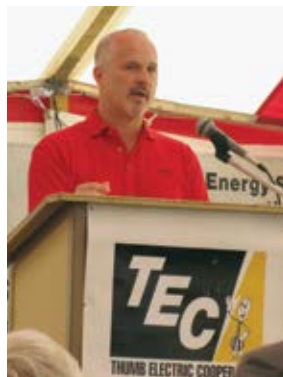
### Huron County

Bad Axe—Northstar Bank  
Pigeon—Northstar Bank

### Tuscola County

Akron—Northstar Bank  
Caro—Northstar Bank  
Mayville—Mayville State Bank  
Millington—Mayville State Bank

# Thumb Electric Co-op Holds 77th Annual Meeting



Thumb Electric General Manager Dallas Braun speaks to over 900 members attending the annual meeting.

**Louis Wenzlaff, President of the Board of Directors**, opened the 77th Annual Meeting of TEC members held on June 14 at the Cass City Recreational Park. An estimated 900 people attended the meeting, which was highlighted by the election of four Directors, and numerous entertainment activities featured as a part of TEC's Member Appreciation Day/Annual Meeting.

Re-elected to three-year terms of District 3 were Beth McDonald, Huron County; Duane Kursinsky, Sanilac County; and Carl Cousins, Tuscola County. Others nominated for a Director position were Dan Cregeur, Huron County; and Ken Landsburg, Sanilac County.

Elected in a special election to serve the remaining term of the three-year term of District 2 of Sanilac County was Lynn Morell. Others nominated for this Director position were Edward Jakubiak.

President Wenzlaff introduced the members of the current TEC Board of Directors including Donald Wolschleger, Beth McDonald and Randall Dhyse, Huron County; Kim Nunn, Lynn Morell and Duane Kursinsky, Sanilac County; and Karl DeSimpelare and Carl Cousins, Tuscola County. Also introduced were Cooperative Attorney James Woodworth and General Manager Dallas Braun.

General Manager Dallas Braun presented the 2013 financial statement, which was negatively impacted by the late December ice storm that showed operating revenues of \$18,555,204 and expenses of \$18,392,140; resulting in an operating margin of \$163,060. The Cooperative also earned \$380,291 in interest on short-term investments, rental income, subsidiary income, and patronage capital from other Cooperative organizations. Total margins for the year 2013 were \$543,351. Member's patronage capital accounts were allocated 2.5 cents on each dollar paid by TEC members in 2013, down from previous years due to the impact of the ice-storm. The 2013 general patronage retirement of \$395,612 for the years 1981, 1982, and 2013 appeared as a credit on a separate line-item on members electric bills received in May 2014. The Cooperative remains financially strong.

TEC's Board President, Louis Wenzlaff, highlighted the following areas:

- Since patronage capital retirements began, TEC has refunded over \$6.2 million to its members.
- In 2013, TEC employees designed and constructed over \$2.2 million of new utility plant, bringing TEC's total investment in the three-county service area to over \$80 million serving 12,263 member-accounts in the three-county areas of Huron, Sanilac, and Tuscola.
- The Cooperative continues to make capital investments in the electrical system. Over \$4 million of upgrades are planned and under

*(Continued on page 12)*

Visit Thumb Electric's website:  
**[www.tecmi.coop](http://www.tecmi.coop)**





## 77th Annual Meeting Highlights



### EARLY BIRD PRIZE DRAWING WINNERS

TEC WATER HEATER: Steve Tabaczynski—Ubly

FOOD GIFT CERTIFICATE: Peggy McKnight—Cass City, Matthew Perez—Caro, Melvin Hoppe—Cass City, Dale Wolfe—Elkton

GAS GIFT CERTIFICATE: Edward Schember—Elkton, James Guilds—Caro, Howard Hergenreder—Millington

ENERGY EFFICIENCY GIFT CERTIFICATE: Randy McFarland—Cass City, Raymond Briggs—Vassar, Evan B. Thomas—Marlette

### FINAL PRIZE DRAWING WINNERS

GAS GIFT CERTIFICATE: Richard Labelle—Chesterfield, Michele Therien—Caro, Matthew Krumenacker—Ubly, Fred Black Jr.—Sandusky

ENERGY EFFICIENCY GIFT CERTIFICATE: Miguel Torres Jr.—Caro, Toby Parker—Kingston, Jim Vogel—Palms, Jardine Zurek—Bad Axe

FOOD GIFT CERTIFICATE: Nancy Copeland—Kingston, Richard Witkovsky—Caro, Rick Sadro—Ubly

### CHILDRENS PRIZE DRAWING WINNERS

BIKE (BOYS): Brady Grifka

BIKE (GIRLS): Hanna Shuart

FM CLOCK RADIO WITH DOCKING STATION: Molly Pittman, Hayden Beardslee

DIGITAL CAMERA: Cooper Luana—Cass City, Brooke Depcinski—Bad Axe

### PRIZE DONATED BY BARTNIK PROPANE

GAS GRILL: Vernita Armstead—Caro

### PRIZE DONATED BY KAPPEN TREE SERVICE

5 YARDS COLORED MULCH (DELIVERED): Carl Binder—Bad Axe



## PACK A PERFECT PICNIC

Pack the perfect picnic basket with these make-ahead, portable creations.

### Black Bean, Tomato & Mozzarella Salad

1 can black beans, drained and rinsed  
 1–2 green onions, chopped, include greens  
 ½ c. cilantro, roughly chopped  
 ½ c. finely chopped celery  
 1 pt. grape tomatoes, halved  
 ½ c. mozzarella cheese, cut in small cubes  
 zest of one lime  
 3 T. or more lime juice  
 1 T. lemon juice  
 3 T. olive oil  
 ½ t. sugar, or to taste  
 Optional—avocado slices

In a glass bowl, combine beans, onion, cilantro, celery, tomatoes and mozzarella.

Whisk together zest of lime, lime juice, lemon juice, olive oil and sugar. Pour lime/lemon dressing over the ingredients and mix gently. Refrigerate at least 2 hours before serving. Add avocado just before serving. This salad is very colorful and easy to take on a picnic. Everyone who tastes it wants the recipe.

*Barbara Steele, Charlevoix*

### Old-Fashioned Coney Dog Sauce

1 lb. ground beef, browned and drained  
 1 c. ketchup  
 2 c. chopped onion  
 ½ c. dark corn syrup  
 ¼ c. brown mustard  
 2 T. vinegar  
 1 T. chili powder

Simmer all ingredients in saucepan, stirring occasionally. Serve over hot dogs.

*Tommie Schmidt, Union*

### Banana Cupcakes

2 c. flour  
 2 ½ t. baking powder  
 ½ t. baking soda  
 ½ t. salt  
 ½ c. shortening  
 1 ¼ c. sugar  
 1 t. vanilla  
 2 eggs  
 1 ½ c. mashed ripe bananas

Sift together flour, baking powder, baking soda and salt. Cream shortening. Slowly add the sugar while still beating the shortening. Add vanilla and eggs and continue beating for a total of 2 minutes. Add mashed bananas while alternating with the flour mixture. Beat 1 more minute. Bake at 375° in 18 cupcake lined pans for 25 mins. or till done. Cool. Frost with your favorite frosting.

*Mary Jean Troyer, Fairview*

### SUBMIT YOUR RECIPE!

Thanks to all who send in recipes. Please send in your favorite "Best Original" recipes by **Aug. 10**.

Mail (handwritten or typed on one side, please) to: Country Lines Recipes, 2859 W. Jolly Rd., Okemos, MI 48864; or email [recipes@countrylines.com](mailto:recipes@countrylines.com).

Contributors whose recipes we print in 2014 will be entered in a drawing and Country Lines will pay the winner's January 2015 electric bill (up to \$200)!

Find more of our readers' recipes at [countrylines.com](http://countrylines.com)

Photos—831 Creative



# Energy-Saving Tips for Manufactured Homes

**If you own a manufactured home** (formerly called mobile homes), you may feel like the only option you have to make it more energy efficient is to replace incandescent lightbulbs with CFLs or LEDs. In fact, there are many actions you can take that will save energy for years to come.

Following are four areas where you can increase efficiency and comfort. If you are mechanically able, you can perform many of the tasks yourself. If not, contact your nearest professional for assistance.

## 1. FURNACE

Make sure the furnace is safe and burns fuel efficiently. Clean your fuel-oil furnace every year; gas-fired furnaces every two to three years. Hire a contractor with a good track record on manufactured homes and check company references.

For the highest energy savings, replace the old unit with a high-efficiency condensing furnace. The extra cost can be offset within the first few years of operation. It is essential to seal all ceiling gaps or cracks above the furnace with caulk and sheetrock (Fig. 1).

## 2. DISTRIBUTION SYSTEM

Once the furnace is in top order, ensure that the heat and AC can be freely delivered to all rooms without restrictions or duct leakage. Clean or replace the filter to assure good air-flow through the furnace; replace all registers that are flattened; and inspect the AC evaporator coil for dust.

You can achieve *major* savings by sealing holes and gaps in the ductwork, but first you must find the leaks! Remove the registers and look for gaps at the boot and trunk. Then, use a flashlight and mirror to inspect ducts, if accessible. Use a high quality aluminum or butyl tape to seal gaps once you have cleaned the surfaces (see how-to resources below).

## 3. UNDER YOUR HOUSE

The road barrier on your home's underside should be intact to ensure that it is retaining heat. When entering the crawl space, lay down plastic or cardboard. Start under the furnace and water heater, where damage usually starts. Patch any holes on the outer edges using ½-inch foil-faced foam board. Large holes between the I-beams require a "sling-patch" made of 1x2 boards and air-barrier material, such as TYVEK® (Fig. 2). Before patching, seal any duct leaks and install insulation where possible, especially under the ductwork, using the widest material available. Do not isolate the water lines from heat, or they may freeze in winter.

## 4. AIR LEAKS IN SHELL

Large holes can often be found around the tub, furnace, under sinks, and behind cove molding in newer homes. Seal these openings with spray foam, caulk, or sheetrock.

Some newer manufactured homes can also be retrofitted to improve energy efficiency and incorporate renewable energy technologies, such as installing a geothermal heat pump (for permanently-sited homes), and solar water heating. Other measures to consider include spray or roll-on roof coating to reflect summer's heat. ■



Cove molding



Fig. 1—A large chimney hole is a huge energy loser. It can be sealed with sheetrock, then caulked air-tight.



Fig. 2—Underneath the home, a "sling-patch" can be screwed into the inner side of the I-beam. It stretches to the other I-beam and holds insulation under the ductwork in place.

Photos—Wisconsin Energy Conservation Corp.

## Other Resources

Visit <http://energysavings.togetherwesave.com/Manufactured-Housing> for a handy graphic that shows a full list of areas where you can make energy-saving improvements. Find other resources at YOUTUBE.com: Sealing ductwork in a mobile home; <http://energy.gov/energysaver/articles/energy-efficient-manufactured-homes>; and a book, "Your Mobile Home: Energy and Repair Guide for Manufactured Housing" (John Krigger).

And, installing CFLs, LEDs and using other energy efficiency tips that work for any home, really do help, too!

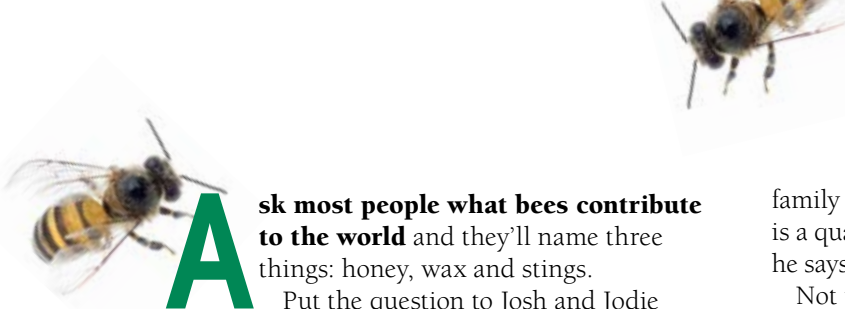




# Backyard Beekeeping: What's the BUZZ About?







**A**sk most people what bees contribute to the world and they'll name three things: honey, wax and stings.

Put the question to Josh and Jodie Kieliszewski and you'll get a longer list: soap, body creams, ointments, lip balms...

Another unusual fact about the Kieliszewskis: While describing the wild swarm of bees that set up housekeeping in a hollow maple tree near their home in 2007, they call it a "blessing."

One person's threat is another's opportunity. The swarm might have caused the average person to summon a pest control company. Josh and Jodie, who share an interest in the natural world, found the bees fascinating.

"We saw intelligence...a social structure," Jodie says.

The swarm moved on, but not before the Kieliszewskis were bitten by the beekeeping bug—a passion that eventually became Bee Lovely Botanicals, LLC ([beelovelybotanicals.com](http://beelovelybotanicals.com))—a home-based business offering handmade, all natural bee-related products sold at Michigan farmers markets and on the internet.

Honeybees have taken a beating in recent years. Colony Collapse Disorder—the result, experts believe, of pesticide overuse, has forced many commercial beekeepers out of business. This is an agricultural crisis because honeybees are essential for pollinating crops like apples, blueberries and cucumbers, and the U.S. Department of Agriculture (USDA) notes that one-third of the food we eat is pollinated by bees.

Recognizing the importance of honeybees in our food supply, the USDA will, according to the *Associated Press*, pay farmers and ranchers in Michigan, Minnesota, Wisconsin and North and South Dakota to reseed pastures with clover,

---

**"Publicity surrounding Colony Collapse Disorder has ignited interest in honeybees and backyard beekeepers, like the Kieliszewskis, are stepping up to fill the gap."**

---

alfalfa and other plants that attract bees. Publicity surrounding Colony Collapse Disorder has ignited interest in honeybees, and backyard beekeepers like the Kieliszewskis, are stepping up to fill the gap.

Josh and Jodie live in Unionville, Mich., with their three sons, where they are members of Thumb Electric Cooperative. A certified athletic trainer, Jodie now divides her time between her boys and the

family business. Josh, a fisheries and wildlife biologist, is a quality-control scientist in his day job, but beekeeping, he says, has transcended from a hobby to a second job.

Not that he's complaining. "It's all fun; it's not really work," he explains.

The business, however, is not without setbacks. This winter's extreme cold took a heavy toll on the Kieliszewskis' bees, with only five out of 40 hives surviving. An average hive holds 60,000–70,000 bees



at its peak occupancy. But the heavy losses won't stop the Kieliszewskis—they switched to a hardier breed called the Carnolian honeybee.

The Kieliszewskis pride themselves on keeping their operation friendly—to their bees, the environment, and the people who use their products.

"We do a lot of research, and are really careful about our ingredients," Jodie says. "We personally use all the things we make."

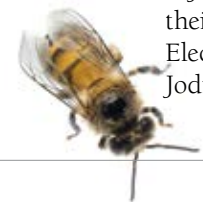
They also resist using chemicals on their hives—even if it means taking bigger losses in harsh weather.

Josh says that he's been stung "a time or two"—especially in the beginning, when he didn't own the proper gear. His dark hair doesn't help. Bees, he explains, equate the color black with bears and other predators.

Jodie casually mentions the time a swarm chased her 300 feet, and stung her 20–30 times. Bees, she says, have different personalities, and this swarm was particularly ornery.

Naturally, the Kieliszewskis know something about bee sting remedies—both conventional and unusual—noting they have "tried almost every bee sting remedy known to man." Jodie likes meat tenderizer, while Josh prefers a remedy that's free and always available: spit. It has enzymes, he says, that break down the venom. ■

—John Schneider



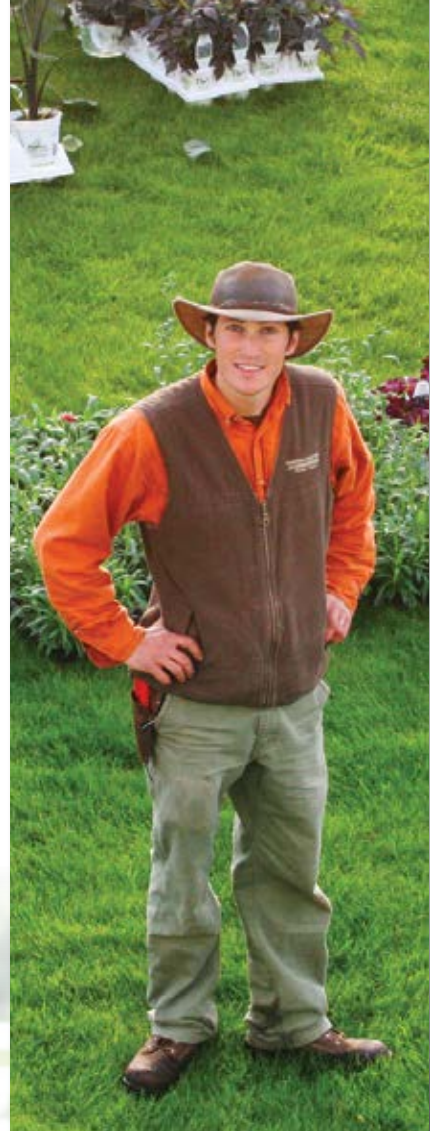
# Jack Barnwell Is Mackinac's Master Gardener

**M**ackinac Island has been getting a facelift. It's the kind that requires rakes and shovels, because it's a facelift in flowers and plants.

Barnwell Landscape & Garden Services has been designing and planting picturesque gardens for six years—with boatloads of colorful flowers—around Mackinac's stately Victorian homes and historic businesses. Jack Barnwell and his crew are painting the island, which is served by Cloverland Electric Cooperative, with a fabulous array of dazzling petunias, sweet-smelling alyssum, and gorgeous larkspur, to name a few.

"We've more or less created what has become the 'Mackinac Island look,'" says Barnwell, who spends much of the winter coming up with new designs for over 130 island clients.

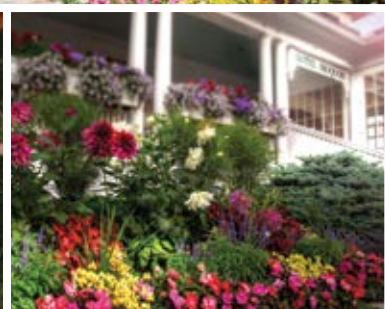
It seems Islanders didn't know they needed Barnwell's services until he started sprucing things up. Now, he says people can't wait to get their landscaping done as early as possible. This creates a crunch for his crew who must rely on boats, bikes, horse-drawn buggies and strong backs to tote their plants and tools because motorized vehicles aren't allowed on the island (except for emergency vehicles and snowmobiles).



Photo—Kathy Holt







Photos—Mike Lanzetta

It all starts before the sun comes up over Lake Huron. “The boats arrive at 3 a.m. with annual flowers,” Barnwell says. “We’ll get the hanging baskets up downtown before it gets busy with tourists.” The remainder are bedding plants that must go directly into the ground. This all has to happen as soon as the weather starts getting nice, including accepting the delivery of six semi-trailer loads, brought over by Shepler’s Mackinac Island Ferry. “We have trusted them with hundreds of unique loads,” says Barnwell, whose company also plants trees, installs irrigation, and does stone work.

Dealing with the spring demand can be a challenge. “It’s such a short season to make their money,” he explains of the businesses he caters to. “My clients depend on it (the flowers) so much for their image.”

Barnwell relies on 12 workers to get the job done without pickup trucks, loaders and skid steers. They make it all work with horses, oversized bike baskets, trailers attached to bikes, and ancient ingenuity.

“I often tell my crew to ‘think like an Egyptian,’” Barnwell adds, “because all these concepts are not new. Many were used for 1,000 years to build some amazing structures, some which are still standing today.” For the heavier work, they’ve retrofitted standard ball carts (meaning the root ball of very large trees), used to move large trees and boulders, into three-wheeled swiveling carts that can handle more weight over long distance with less effort.

“We also use a lot of winch and come-along setups, block-and-tackle pulley systems, and good ol’ fashioned leverage,” he says. “It’s amazing what can be moved with the right fulcrum point.”

The Barnwell crew’s work is also a central feature in the Grand Garden Show, a joint venture with the Proven Winners® company, the Grand Hotel, and Barnwell Landscape. The second annual event is Aug. 24–26 (see [grandgardenshow.com](http://grandgardenshow.com)). ■



## Thumb Electric Co-op Holds 77th Annual Meeting *(Continued from page 4)*

construction for 2013. TEC employees and outside line construction contractors will be performing the work.

- The Cooperative paid \$713,712 in property taxes to schools and other governmental bodies in Huron, Sanilac, and Tuscola counties in 2013.
- The Cooperative continues to work with its Statewide and National Organizations to ensure that any issues that may affect the availability, reliability and affordability of electricity to its membership are heard by our elected officials in Lansing and Washington, DC.
- The Cooperative continues to support the future leaders by sponsoring eligible teens to attend the Statewide Youth Leadership Summit near Cadillac, MI, and also the Youth Tour in Washington, D.C.
- Recognized long-time TEC Board Member Len Briolat who recently retired after serving 27 years on the Board; 14 years as Treasurer.
- Recognized TEC's employees for continuing to work safely, and thanked the employees for their continued dedication and hard work during the past year.

TEC's General Manager, Dallas Braun, highlighted the Cooperative's financial status, rates, member services, marketing activities, patronage capital retirement, and power supply activities. The report included the following:

- The Cooperative was impacted by a severe ice storm in late December that resulted in lower than required margin levels. As a result, a 3 percent rate increase is expected later in 2014. The Cooperative was able to continue to meet all of its other financial and credit requirements. The Cooperative will continue to balance needed infrastructure improvements and their impact on electric rates.
- The Cooperative continues to offer Energy Optimization programs to its members to encourage them to use energy more efficiently and thus allow them to save money. Energy Optimization is targeted at the elimination of electricity waste by encouraging the use of energy efficient devices, and its goal is to not only reduce emissions but delay the need for the construction of new power plants.
- The Cooperative continues to offer other money-saving programs to its members. Members were thanked for their participation in TEC's energy management programs. Over 6,200 members are participating in TEC's managed water heating and dual-fueled heating and air-conditioning programs. TEC's high efficiency, free electric water heater program continues to flourish with over 5,000 high efficiency water heaters being placed in members' homes and businesses and saving them money over other energy

sources. TEC's Energy Management programs combine high efficiency, money-saving systems along with conservation during periods of peak demands.

- Through its subsidiary, Thumb Energy Services, the Cooperative continues to offer propane service to approximately 1,100 members and non-members alike. The most popular is the metered program, where the user does not pay for the propane until after they use it.
- The Cooperative continues to meet the State-mandated Renewable Portfolio Standard (RPS), which requires that all Michigan utilities purchase a certain percentage of electricity from Michigan renewable resources growing to a maximum of 10 percent by 2015. The Cooperative is complying by purchasing qualified renewable energy credits (RECs) from their wholesale power supplier at a much lower cost compared to constructing its own renewable generation source.
- TEC continues its system maintenance program, including right-of-way-clearing, vegetation spraying, pole testing, and other improvement programs.
- U.S. Rep. Candice Miller's aide—Ed Smith, State Sen. Mike Green, and State Rep. Terry Brown were introduced and briefly spoke to the membership. All were recognized for their support of Thumb Electric Cooperative and the rural electric program.
- Alden Knowlton from NRECA was introduced and spoke to the membership regarding the new ACRE for Co-op Member-Owners, a Political Action Committee that was officially presented to the membership.
- In the fall of 2014, TEC will roll out an updated website along with an updated online "SMARTHUB" self-serve billing/payment center. The new "SMARTHUB" smart phone app will also be available this fall. The new app will allow members to manage their account remotely on their smart phone to pay their energy bills, enter meter readings, and manage their energy consumption by viewing their billing information/history.

In closing his report, General Manager Dallas Braun urged members to continue their strong interest in Thumb Electric Cooperative, to stay engaged, and thanked them for their support.

After the business meeting, a lunch was served which was followed by entertainment featuring impressionist, magician and comedian Brandon Styles act, of RUSCH entertainment, along with bucket truck rides, pony rides, a candy drop, face painting, and other family activities.

In action taken after the annual meeting, the Board of Directors re-elected Louis Wenzlaff President; Donald Wolschleger Vice-President; Beth McDonald Secretary; and Randall Dhyse Treasurer. ■



# Check Your Boat, Dock and the Neighbor's, Too!

**F**or water fun and safety, there are items you must legally have on your watercraft—life vests, fire extinguisher, throwable flotation device, and properly working lights—but make sure the boat itself and the dock are safe, too!

July 2012 saw some horrific fatal accidents near boats and docks. A 20-year-old Port Huron man entered the water behind a moored boat and became disabled as he tried to climb onto the swim platform. Friends trying to pull him onboard reported getting shocks. He could not be resuscitated. An investigation confirmed voltage behind the boat, caused by an AC-to-DC fault in the battery charger that energized the underwater gear, and there was no AC-DC bonding connection. In another incident, a young woman was electrocuted by an energized dock ladder.

To help prevent such tragedies, the National Electrical Contractors Association says:

- All installations should be performed by a professional electrical contractor.
- All dock receptacles must comply with the National Electrical Code, which mandates a ground fault circuit interrupter (GFCI). A GFCI measures a circuit's current and senses any imbalance (such as a discharge into the water), which trips the GFCI and cuts off the power.
- Test a GFCI at least monthly. Locate it along the ramp to the dock so it can be easily tested by local fire departments.
- Metal dock frames should have “bonding jumpers” that connect all metal parts to an on-shore grounding rod. This means any dock part that becomes energized by electrical malfunction will trip the GFCI or circuit breaker.
- Ask neighbors if their dock electrical systems have been inspected and are up to Code.
- Household wire is not suitable for boats.
- *Do not* use wire nuts (these are for solid conductor wire, which should never be on a boat) or splice connectors (can cut wire strands)!
- Fuses are rated to protect the wire, not the stereo. If a fuse blows continuously, something else is wrong.
- If you rent a dock or boat, notify the owner of safety violations immediately.
- Have your boat's system (especially with onboard generators) checked at least annually, and when something is added or removed.
- Ropes, string, masts and rigging also conduct electricity—don't be the common ground between water and electricity!
- See [SafeElectricity.org](http://SafeElectricity.org) for more tips. ■



# Summer Thrills

**S**ummer means “vacation” to many, and memories of family road trips along with the familiar mantra Mom and Dad grew weary of hearing: “Are we there yet?” I remember traveling to the Detroit Zoo and the Henry Ford Museum and Greenfield Village back in the ‘60s when speed limits were more of a suggestion than law. Dad was known to occasionally hit 100 mph—a great thrill for a young lad!

Today, I still enjoy a thrilling ride with my family while taking in some of the most panoramic Lake Michigan views, thanks to Mac Wood’s Dune Rides in Mears.

A fourth generation family business that’s served by Great Lakes Energy Cooperative, Mac Wood’s began operating in 1930 when Mac started looking for ways to entertain guests at a nearby resort he managed. Mac built the first four-passenger ‘dune scooter’ from a Model A Ford and charged 25 cents per ride.

Things were less restricted back then and like my Dad, with Mac behind the wheel, many described the trips as ‘thrill rides.’ Mac’s granddaughter, Shelby Olson, describes it as a time when “there were no rules. It was a go-anywhere, full-speed fun ride.”

Though times have changed, the dune rides are just as exciting today (open until Oct. 5—see [macwoodsdunerides.com](http://macwoodsdunerides.com)) as they were 84 years ago. Between climbs and descents through some of the most beautiful dunes in the state, you’ll stop along the way to enjoy views of Lake Michigan and Silver Lake while learning about the ecology of the dunes.

Today’s dune scooters seat more folks more comfortably (your backside will appreciate it!) so bring a few friends along for the ride.

Working every summer since she was a child, Shelby emphasizes that the dune rides are still all about family,

friends and fun. “Visiting Mac Wood’s is a unique experience that everyone in the family can enjoy from babies to grandparents!” She also says that many former guests are now bringing their kids and grandkids to ride, commenting about riding the dunes “when they were little.” Ah, those family memories. You gotta love ‘em.

There is plenty of time left to enjoy a Pure Michigan summer. Comb the shores for beach glass, dip your toes in one of our Great Lakes, or simply soak up the sunshine.

Family memories await just over the next dune! All you need is a map and the spirit of adventure.

Share a story idea with Jack by email to: [jack@countrylines.com](mailto:jack@countrylines.com) or write J. O’Malley, 2859 W. Jolly Rd., Okemos, MI 48864. ■



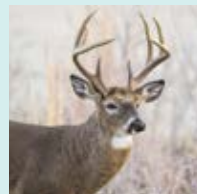
Jack O’Malley

## Deer Blind Contest: The Hunt Is On!

If you think yours is the best Michigan deer blind, enter our *Country Lines* Deer Blind Contest by **Aug. 15**.

Categories for entering a photo of your blind are: Most tricked-out; Best story behind it; and Most interestingly-engineered. Enter at [countrylines.com](http://countrylines.com) or mail it to CL Deer Blind Contest, 2859 W. Jolly Road,

Okemos, MI 48864. Include your name, contact information, and a description of what makes it great. Winners will receive a \$50 credit on their co-op electric bill and have a photo of their blind published in *Country Lines*.



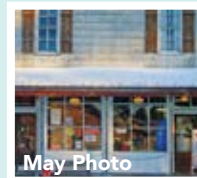
## «« Do You Know Where This Is?

Every co-op member who identifies the correct location of the photo at left by **Aug. 10** will be entered in a drawing for a \$50 credit for electricity from their electric co-op.

We do not accept Mystery Photo guesses by phone. Enter your guess at [countrylines.com](http://countrylines.com); or send by mail to *Country Lines* Mystery Photo, 2859 W. Jolly Rd., Okemos, 48864. Include your name, address, phone number and the name of your co-op. Only

those sending complete information will be entered in the drawing. The winner will be announced in the Sept. 2014 issue.

The May contest winner is Luke Bourne, a Great Lakes Energy Cooperative



member from LeRoy, who correctly identified the photo as the LeRoy Hardware store.



# 2 **FREE Upgrades** **\$5,000 Value!**



**WHEN YOU ORDER IN JULY**

Upgrade from Standing Seam to Designer Oxford or Rustic Shingle plus eliminate the rust from steel by upgrading to energy efficient non-rusting aluminum. Act now and these \$5,000 upgrades are absolutely **FREE**.

## **Why choose a metal roof?**

- Permanent/Lifetime Guarantee
- Add beauty & value to your home
- A rainbow of colors & styles
- Year round statewide installation

- **Visit our showrooms:**  
**FLINT • 6140 Taylor Dr.**  
**LANSING • 1875 Lansing Rd.**

- Ask about our  
Do-It-Yourself seminars



facebook.com  
/AMRmichigan



## **NEW! Pocket Rib Panel for Rural Buildings**

New and Exclusive to American Metal Roofs - the Pocket Rib Metal Roof Panel designed specifically for non-heated barns and outbuildings. Available in a variety of colors, this panel is the only one to meet AMR's high standards of functional durability. Call and talk with one of our metal roofing experts about the benefits of Pocket Rib today!

**Call today!** 844.638.2576  
**844.METAL.ROOFS**



Financing Available

**www.AmericanMetalRoofs.com**



**Thumb Electric  
Cooperative**  
www.tecmi.coop

# Where is your money?

With TEsC's metered LP gas service, your money stays in the bank.



*Bank it—or tank it. It's your choice.  
Pay for the gas after you use it!*

If you want...

- to be treated fairly
- excellent scheduled fill service
- automatic bill payment discount
- to pay for the gas you use after you use it

...order TEsC's LP Gas Service today!

**Call for details and pricing about our metered gas service**

**989-658-8571 or 1-800-327-0166**

(Not regulated by the Michigan Public Service Commission)

