

Presque Isle Electric & Gas Co-op

March/April 2016

MICHIGAN COUNTRY LIVES

Art
on
Ice



Plus!

Tree Clearing Means
Better Service

Save Money and Energy

PIE&G Special Board
Meeting Is March 22

YOU MAY HAVE
UNCLAIMED MONEY!
SEE CAPITAL CREDIT
CENTER INSERT



**Act now to receive a
30% Federal tax credit**

7 Series
*Ultimate comfort
and efficiency*



Time is running out to take advantage of a 30% tax credit for geothermal

You may not realize it, but right beneath your feet is an almost unlimited reservoir of stored solar energy. A WaterFurnace geothermal system taps into this free and renewable resource to provide savings of up to 70% on heating, cooling, and hot water—with a comfort you have to experience to believe. Right now you can save thousands on installation thanks to a 30% federal tax credit. But hurry, the credit is only available through the end of 2016. Contact your local WaterFurnace dealer today to learn more!

YOUR LOCAL WATERFURNACE DEALERS

Bad Axe

B & D Htg
(989) 269-5280
bdheating.com

Berrien Springs

WaterFurnace
Michiana
(269) 473-5667
gogreenmich.com
geothermal.com

Big Rapids

Stratz Htg & Clg, Inc.
(231) 796-3717
stratzgeocomfort.com

Caro

AllTemp
Comfort, Inc.
(866) 844-HEAT (4328)
geo4less.com

Carsonville

Certified Temperature
Innovations
(810) 300-7748

Clifford

Orton Refrig & Htg
(989) 761-7691
sanduskygeothermal.com

DeWitt

S & J Htg & Clg
(517) 669-3705
geothermalservices.com
ofmichigan.com

Grand Rapids

Total Comfort
Resource, LLC
(616) 406-3182
totalcomfortresource.com

Hart/Ludington

Adams Htg & Clg
(231) 873-2665
adamsheatingcooling.com

Indian River

M & M Plmb & Htg
(231) 238-7201
mm-plumbing.com

Jackson/Adrian

Comfort 1
Htg & A/C
(517) 764-1500
[comfort1.net/
geothermal](http://comfort1.net/geothermal)

Kalkaska

Kalkaska Plmb & Htg
(231) 258-3588
kalkaskageothermal.net

Mt Pleasant

Walton Htg & Clg
(989) 774-1566
waltonheating.com

Muskegon

Adams Htg & Clg
(231) 873-2665
[adamsheating
cooling.com](http://adamsheatingcooling.com)

Kiessel Geothermal

Htg & Clg
(231) 747-7509
kiesselsgeo.com

Portland

ESI Htg & Clg
(517) 647-6906
esiheating.com

Sunfield

Mark Woodman
Plmb & Htg
(517) 886-1138
mwphonline.com

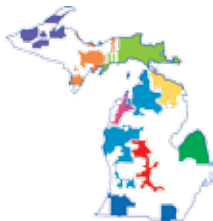
Traverse City

Geofurnace Htg & Clg
(231) 943-1000
watergeofurnace.com
D & W Mechanical
(231) 941-1215
dwgeothermal.com



waterfurnace.com/Credit

WaterFurnace is a registered trademark of WaterFurnace International, Inc. ©2016 WaterFurnace International, Inc.



Michigan's Electric Cooperatives
countrylines.com

March 2016
Vol. 36, No. 3

Executive Editor
Casey Clark

Editor
Christine Dorr

Publisher
Michigan Electric
Cooperative Association

Design and Layout
Ciesa Design

Michigan Country Lines, USPS-591-710, is published monthly, except August and December, with periodicals postage paid at Lansing, MI, and additional offices. It is the official publication of the Michigan Electric Cooperative Association, 201 Townsend St., Suite 900, Lansing, MI 48933.

Subscriptions are authorized for members of Alger Delta, Cherryland, Great Lakes, HomeWorks Tri-County, Midwest Energy, Ontonagon, Presque Isle, and Thumb electric cooperatives by their boards of directors.

POSTMASTER: SEND ALL UAA TO CFS.

Association officers are **Robert Kran**, Great Lakes Energy, chairman; **Mark Kappler**, HomeWorks Tri-County Electric, vice chairman; and **Eric Baker**, Wolverine Power Cooperative, secretary-treasurer. **Craig Borr** is president and CEO.

CONTACT US/LETTERS TO EDITOR:

Michigan Country Lines
201 Townsend St., Suite 900
Lansing, MI 48933
248-534-7358
cdorr@meca.coop
countrylines.com



The appearance of advertising does not constitute an endorsement of the products or services advertised.

Change of Address:

Please notify your electric cooperative.
See page 4 for contact information.

Cover photo by Dre Photography

IN THIS ISSUE

- 6 OUR ENERGY**
Down Home Comfort With Geothermal Heat Pumps
Ted Clutter
- 7 SAFETY**
Staying Safe In A Car Accident With A Utility Pole
- 10 HOME COOKING**
Perfect Pasta Recipes!
Christin McKamey & Our Readers
- 14 FEATURE**
Art On Ice With Stephanie Miller
Emily Haines Lloyd
- 18 READERS' PAGE**
Surf's Up—In Michigan!
Jack O'Malley
Guess Our New Mystery Photo

IN YOUR WORDS

Question Of The Month—We Asked, You Answered.

Last month, we asked electric co-op members a question: What is the best compliment you have ever received? Thank you for all the responses. Here are some of your answers:

Something that I would have abhorred as a teenager but treasure now —"You remind me of your mom."

The best compliment I ever received was, "You're as pretty as a keeper rainbow trout on the end of the line on opening day." James and I have been best friends for 40 years and married for over 38 years.

You are a good listener.

Our new Question of the Month is:

If you could be any age for a week, what age would that be?

Please submit answers to countrylines.com by April 1.



A PROGRAM OF AMERICA'S ELECTRIC COOPERATIVES
WWW.VOTE.COOP

Don't forget to vote in the presidential primary on March 8.
Visit vote.coop for more information.



Board Of Directors

Allan Berg, Vice-Chairman

1117 E. Heythaler Hwy., Rogers City, MI 49779
989-734-0044 • Term Expires 2017

Sandy Borowicz

5341 Carlson Rd., Cheboygan, MI 49721
231-627-9220 • Term Expires 2018

John Brown, Chairman

21 W. Devereaux Lake Rd., Indian River, MI 49749
231-625-2099 • Term Expires 2017

Sally Knopf

1849 W. 638 Hwy., Rogers City, MI 49779
989-734-4196 • Term Expires 2018

Kurt Krajniak

7630 Wallace Rd., Alpena, MI 49707
989-884-3037 • Term Expires 2016

Daryl Peterson, Treasurer

P.O. Box 54, Hillman, MI 49746
989-742-3145 • Term Expires 2018

David Smith, Secretary

P.O. Box 180, Atlanta, MI 49709
989-785-5345 • Term Expires 2017

Raymond Wozniak

6737 State St., Posen, MI 49776
989-766-2498 • Term Expires 2016

President & CEO: Brian J. Burns

bburns@pieg.com

Presque Isle Electric & Gas Co-op

19831 M-68 Hwy., P.O. Box 308
Onaway, 49765

Business Office & Billing: **989-733-8515**

Toll-Free: **800-423-6634**

Gas Emergency Toll-Free: **800-655-8565**

pieg.com

Most PIE&G natural gas rates and charges are not regulated by the Michigan Public Service Commission.

Presque Isle Electric & Gas Co-op is an equal opportunity provider and employer.

Your Touchstone Energy[®]
Cooperative 

Why Your Co-op Clears Vegetation

Your co-op leadership team recognizes that reliable electricity is not just a luxury, it's an expectation. That's why your electric co-op considers its prime objective to be providing you with a reliable and safe electric distribution system. However, many members may not be aware that trees can be a major obstacle to good electric service. To improve your service experience, PIE&G has an aggressive, proactive overhead line clearance program that's proven to significantly reduce outage hours related to tree interference with our distribution system.

What We Do and Why

Presque Isle Electric & Gas Co-op's line clearance standard is to obtain and maintain a ground-to-sky clearance of 15–20 feet, free from all obstructions, on each side of the power line. Where our facilities cross private property, an easement gives us the right to use that property to maintain our right-of-way. An easement can be written and recorded, meaning it is signed and on file at the county Register of Deeds office where the service is located. An easement may also be unwritten or "prescriptive," where the land has been used for utility purposes in a continuous and open manner for the statutory period of 15 years under Michigan law.

PIE&G's line clearing program (also called "Vegetation Management"), consists of two approaches: mechanical clearing and herbicide application.

2016 Mechanical Clearing Plan

Mechanical clearing is scheduled to begin between February and December. PIE&G's licensed contractors will be cutting approximately 256 miles of overhead line at various locations throughout our nine county service territory. Members who may be in proximity to areas designated for mechanical clearing will be notified by mail prior to the onset of work in that area. PIE&G will determine if there are trees in your maintained lawn area that should be trimmed or cut. A representative from one of our contracted crews will attempt to contact you in person before the work is started.

2016 Herbicide Application

The schedule for herbicide application is set to occur between April and October. Your co-op has hired professional, licensed contractors to treat approximately 328 miles of line throughout its service territory with state-approved herbicide. We will notify members whose service is near the designated areas by mail prior to the onset of work. Herbicide is not applied to mowed lawn areas. Herbicide effectively controls tall-growing trees and bushes while promoting low-growing plants such as grasses, wildflowers and shrubs that are beneficial to wildlife.

It offers longer-term results in a more cost effective way, and is endorsed by a number of environmental, forestry and wildlife providers as offering benefits to many wildlife species.

Jobsite Cleanup

Our contract crews dispose of trimmed branches and limbs in the most economic and practical manner possible. It is customary during regular line clearing activity that crews will remove branches and limbs within maintained or landscaped areas, and leave the wood for use by the property owner. In unmaintained areas, crews will leave wood, branches and limbs for use by the property owner to decompose naturally. The co-op does not remove stumps after tree removal. During emergency power restoration activities, crews clear trees off and away from our lines in order to make repairs. Presque Isle Electric & Gas Co-op does not return to remove wood, branches and limbs that were removed during outage restoration efforts.

Our Commitment to Safety

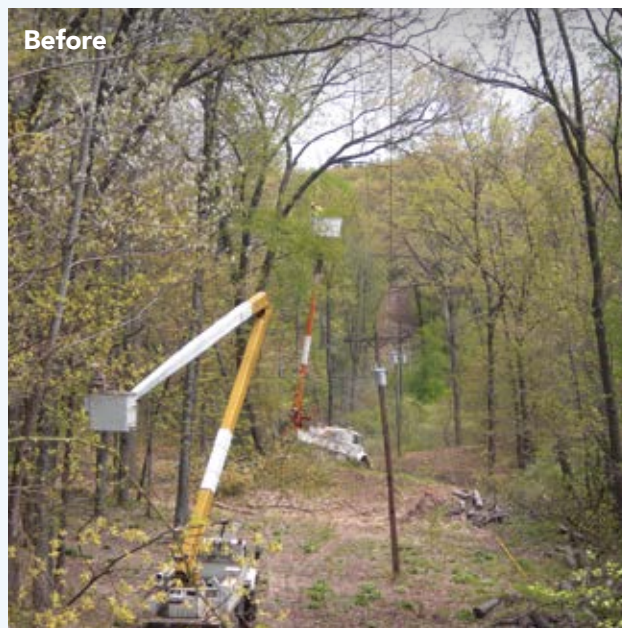
Safety is a top priority for PIE&G. Although Mother Nature provides an amazing setting for our enjoyment of outdoor activities, it's best to keep your activities away from overhead power lines. If you see a downed power line due to a fallen tree or branch, stay away and immediately call PIE&G to report it. Never attempt to remove branches or trim trees that are near power lines to avoid potential electrical contact. Any tree in close proximity to a power line can present a safety hazard.

Service Line Trimming

Presque Isle Electric & Gas Co-op will trim along the service line running from the transformer to your home when a tree is in contact with the power line. We do not remove trees located near service lines. If you plan to have a tree removed from your property, contact us several days in advance so we can schedule a crew to visit, de-energize and drop the line so you can have the tree safely removed. PIE&G will need at least two days prior notice.

Plan Ahead

Trees and power lines do not mix, so careful planning is important before you begin any landscape plan or outdoor project. Trees grow quickly, so the seedling you plant today may well reach heights exceeding 30–50 feet in a few years. Avoid planting trees beneath overhead utility lines or near your service line. Look around and note what's overhead, on the ground, and underground before beginning any outdoor work project. ■



Before and after shots of a line circuit. A newly cleared right-of-way can look extreme at first, but as the growth returns the landscape regains its natural beauty.



The ground-to-sky approach to line clearance helps to make sure that trees don't form a canopy over the lines.

For More Information

For more information about PIE&G's line clearance procedures, contact our Member Services Department at 1-800-423-6634.

Down Home Comfort

Using the earth for heating and cooling makes sense.

By Ted Clutter, The Geothermal Exchange Organization

There's a movement afoot, but don't worry—the ground isn't shaking. It is quietly heating and cooling tens of thousands of homes and commercial buildings across Michigan with ground-source—or geothermal—heat pumps.

Geothermal heat pumps are renowned by both the U.S. Department of Energy and the Environmental Protection Agency as our most efficient and environmentally friendly heating and cooling technology for homes, businesses and institutional spaces of all sizes. Indeed, by tapping the free

During the winter months, the process is reversed. The earth heats the water circulating through the pipes, which flows through the geothermal system to provide indoor space heating. With additional equipment, geothermal heat pumps can also provide hot water for a variety of uses at little extra monthly cost.

Geothermal Benefits

Geothermal heating and cooling saves energy and reduces fossil fuel use, either on-site or at power plants. Geothermal heat pumps reap huge savings on ratepayer energy bills because they use less electricity than conventional equipment.

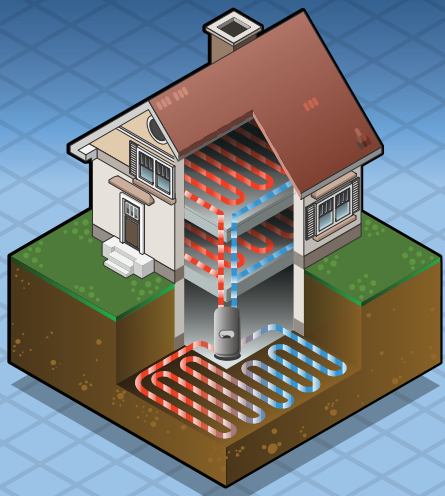
Geothermal heat pumps are a comfortable, "green energy" solution and an easy way to act locally, while thinking globally about the environment. Indeed, they shrink the average carbon footprint of a typical American home by nearly 50 percent. Best of all, geothermal heat pumps are "Made in the USA" by an innovative industry that is creating jobs all across America.

Geothermal Incentives

The federal government offers a 30 percent tax break for homeowners who install a GHP (10 percent for commercial jobs). Those credits expire at the end of 2016, but the Geothermal Exchange Organization (GEO) is working with Congress to extend them through 2022. For the time being, you can still take advantage of the credits if your project is in service before the end of the year.

And be sure to check with your electric co-op about any rebates they might offer for a geothermal system. Your trusted local geothermal heat pump contractor will be able to help you with that information.

For more information and member contractors in your area, visit the Geothermal Exchange website, geoexchange.org. ■



renewable energy of the ground, geothermal heat pumps (GHPs) can save consumers up to 70 percent on their monthly energy bills.

How Geothermal Heat Pumps Work

Geothermal heat pumps use a series of plastic pipes—called ground loops—buried beneath the surface where temperatures are a constant 50° throughout the year (depending on where you live). The fusion-sealed pipes are connected to geothermal heating and cooling equipment inside the home or building.

Water circulating through the system carries heat to and from the ground, depending on the season. During the summer months, unwanted heat indoors is transferred outside to the ground for cooling by the earth. The cool water flows through the GHP system to provide air conditioning.

Please note this article focuses on one type of system, there are other types of energy-saving heat pumps, such as pond loop or air-to-air types. Discuss options with a trusted heat pump contractor.



Staying Safe In A Car Accident With A Utility Pole

Winter wonderlands are beautiful, but they can be a driving nightmare. Snow, slush, ice and wind make driving more stressful and hazardous. If you are in an accident involving a utility pole, your vehicle may be charged with electricity. If this is the case and you step out of the car, you will become the electricity's path to the ground and could be electrocuted.

While downed lines sometimes reveal they are "live" by arcing and sparking with electricity, this is not always the case. Power lines do not always show signs that they are live, but they are just as lethal.

Stay in the car if you are in an accident with a power pole. Warn those who try to help that they must stay far away from the vehicle. Call 911 for help, and wait until a utility professional tells you it is safe to leave the car.

The exception to this rule is if your car is on fire. In that case, jump clear of the vehicle without touching it and the ground at the same time. Then "bunny hop" away with your feet together to safety. This way there will not be a voltage difference between your two feet, which would give electricity the chance to flow through your body. ■



ENERGY STAR: Your Best Defense Against Energy Waste

Looking for new ways to save energy, but not sure where to start? Team up with the Energy Optimization program and take your outdated, energy-wasting lightbulbs, appliances, and electronics out of the game. The Energy Optimization program helps you upgrade your home by providing rebates toward the purchase of highly-efficient ENERGY STAR® products.

What is ENERGY STAR?

Established as a joint effort between the U.S. Department of Energy and the U.S. Environmental Protection Agency, ENERGY STAR is a trusted brand for quality products that use significantly less energy than required by minimum federal standards. The ENERGY STAR label can be found on hundreds of items, including lightbulbs, electronics, major appliances, and even certified homes and buildings.

ENERGY STAR products provide the same features you're used to, but can use up to 75 percent less energy than

standard models. In order for a product to bear the ENERGY STAR label, it must:

- Contribute significant energy savings.
- Deliver features and performance that customers demand.
- Back up energy savings claims with testing.

View all rebates at michigan-energy.org or call 877-296-4319 for details. ■

Below are just a few ENERGY STAR products eligible for Energy Optimization program rebates:

Product	Efficiency comparison (vs. a new standard model)*	Energy Optimization program rebate**
Clothes washer	Uses 35% less water and energy	\$100
Computer	Uses 60% less energy	\$50
Dehumidifier	Uses 15% less energy	\$75
Dishwasher	Uses 5% less energy and 15% less water	\$75
Chest Freezer	Uses at least 10% less energy	\$50
Refrigerator	Uses 9% less energy	\$50
Television	Uses at least 25% less energy	\$50-100
Room air conditioner	Uses 15% less energy	\$50

*All data according to energystar.gov. **Rebate amounts are subject to change.

The ball's in your court.

Your game plan for 2016: Start saving energy. Get off the bench and score big when you purchase ENERGY STAR® lighting and appliances! The Energy Optimization program provides rebates on bulbs, smart power strips, ceiling fans, dishwashers, TVs, and more.

ENERGY TIP: For the fastest way to receive your rebate, use our new online application.

ONLINE: michigan-energy.org
PHONE: 877.296.4319

Slam Dunk



Energy Optimization programs and incentives are applicable to Michigan service locations only. Other restrictions may apply. For a complete list of participating utilities, visit michigan-energy.org.

Shutterbugs Share 'Winter Fun' Photos



Photo Fun

Presque Isle Gas & Electric Co-op invites members to share their amazing photos. Selected photos will be published in *Michigan Country Lines*. Upcoming topics and deadlines are: **"Saluting Our Armed Forces,"** due **March 25** for the May/June issue; and **"All About Michigan,"** due **May 25** for the July/August issue.

Details and instructions for photo submission—including rules, topic list, publication date, and submission deadlines—can be found at <http://bit.ly/1JX5Afh>. We look forward to seeing your best photos!

Remember <http://bit.ly/1JX5Afh> to submit photos!

1. The Lucy Hill Natural Luge Track outside Negaunee, MI is the country's only natural luge track and has hosted local, national, and North American Continental competitions. An international World Cup luge competition was held at this track in 1995 and one will be held here in 2017. The public can slide on this track on weekends with all necessary equipment and instruction provided by the U.P. Luge Club. *Photo by John Porter, a national luge coach and international luge competition judge for 25 years.*
2. Ice Fishing On East Twin Lake, Lewiston. *Photo by Ted Neuner*
3. "Winter's Last Hurrah," getting to go for a run off-leash while enjoying the last snow storm of the year in 2013 on the old railroad tracks in Cheboygan. "The sweet taste of freedom!" *Photo by Linda Tallman, Cheboygan*
4. Our dog, Chole, who loves the snow, had been running and throwing that orange peel in the air for an hour. Pure winter fun for her. *Photo by Diane LaHaie*
5. Adam Granger kite skiing on Long Lake.

PERFECT PASTA!

Try these inspiring pasta recipes full of flavorful ingredients!



Pasta Bacon Toss

Joy Frazee, Portland

- 1 lb. bacon, cut up
- 4 c. chicken broth
- 2-14.5-oz. cans Italian-style diced tomatoes
- 1 med. onion, chopped
- 4 garlic cloves, minced (or more, if desired)
- ½ t. crushed red pepper flakes, optional
- 16 oz. box uncooked linguine pasta
- 4 ozs. cream cheese
- 5 ozs. parmesan cheese, shredded

Cut bacon into 1-inch pieces and fry; remove from skillet. Put approximately 1 T. of bacon grease in a pot. Add minced garlic and pepper flakes; cook for 10–20 seconds. Add onion; cook 2–3 minutes or until onion is tender. Add broth, diced tomatoes and about a handful of fried bacon pieces, reserving the rest for later. Add uncooked pasta, simmer for 9–10 minutes stirring occasionally, covered, or until pasta is cooked. Mix in the cream cheese until blended well with the pasta and the sauce is thickened. Serve and top with some bacon and shredded Parmesan. This is great for two nights; for the second night, top the remaining pasta with mozzarella and/or Parmesan cheese and bake at 350° until heated through and cheese is melted. Top with cooked bacon.

UNCLAIMED CAPITAL CREDITS

It's your money, and we want you to have it!

One of the benefits of being a member of Presque Isle Electric & Gas Co-op is that as a cooperative, any revenues beyond expenses (called margins) are allocated and eventually returned to **PIE&G** members in the form of capital credit retirements. The Presque Isle Electric & Gas Co-op Board of Directors is committed to retiring capital credits after considering your co-op's financial health. Capital credit retirements during the last few years have been made to current and past members in the form of checks or bill credits.



We need your help! As part of the retirement process, a portion of capital credits are unclaimed because we are unable to locate certain members. On the following page we have listed the names of members who are entitled to capital credits that remain unclaimed. Please review the list.

Please Note—Under Michigan law, unclaimed capital credits escheat to Presque Isle Electric & Gas Co-op after 5 years. Please contact Presque Isle Electric & Gas Co-op if you have questions regarding your account.

- If your name is on the list, check the appropriate claim box and fill out section **1**, then return the completed form to **PIE&G** with your signature.
- If you recognize the name of a deceased member and you are that member's legal heir, check the appropriate claim box and complete sections **1** & **2**, then return the completed form to **PIE&G** with your signature.
- If you know someone on this list, please have **them** contact **PIE&G**.

Check One: ☐ claim request by member ☐ claim request on behalf of a deceased member

(1) Member or heir claiming the refund

Member's Name or Heir's Name	<hr/>			
	FIRST NAME	MIDDLE NAME	LAST NAME	
Service Address	<hr/>			<hr/>
	STREET ADDRESS			CITY
Current Mailing Address	<hr/>			
	STREET ADDRESS AND/OR APT NBR		CITY	STATE ZIP CODE
Telephone	() <hr/>		Relationship to deceased member <hr/>	
	i.e., SPOUSE, SON, DAUGHTER, SIBLING			

(2) DECEASED MEMBER

Deceased Member's Name	<hr/>		
	FIRST NAME	MIDDLE NAME	LAST NAME
Service Address	<hr/>		<hr/>
	STREET ADDRESS		CITY
Signature Required	<hr/>		<hr/>
	SIGNATURE OF PERSON INITIATING THE CLAIM, AND TITLE, IF APPLICABLE FOR BUSINESS		DATE

ADDITIONAL INFORMATION WILL BE REQUESTED BY **PIE&G** FROM THE PERSON INITIATING THE CLAIM. CLAIMS FOR REFUNDS WILL BE PAID ONLY AFTER PROPER DOCUMENTATION HAS BEEN RECEIVED AND VALIDATED BY PRESQUE ISLE ELECTRIC & GAS CO-OP.

2016

PLEASE RETURN THIS FORM TO **PIE&G, ATTN: CAPITAL CREDIT REFUND, PO Box 308, ONAWAY MI 49765.**

Presque Isle Electric & Gas Co-op Members with Unclaimed Capital Credits

AFB NORTH INC	CRAWFORD ELWYN D	GREENLY LAUREN L	LORENSKI LUCILLE	PETERS CHAD M & CARRIE A	TEETS SALLY
AIKENS BRIAN & LYNN	CROFT DENNIS	GROSINSKY RHODA & RANDY	LUNDQUIST GERALD W	PETERS LARRY E	THIEM ROBERT
ANDRULIS MARION	CZALKO MATTHEW M	GUZMAN JOSEPH L & NANCY R	MADDOX MICHAEL & JENNIFER	PETERS PAUL R & DENISE	THOE GREG
ANDRZEJCZAK FRANK	CZANKO LOUIS J	HAINES CARL F & RENITA	MAGDA GENEVIEVE	PETERS WENDY D & ARTHUR	THOMAS CECIL & JUDITH
AZTTAU ROBERT D	DANIELS VALERIE A	HALL WILLARD C	MANLEY GREGORY J & BETSY	PIEHL DOROTHY	THOMPSON LISA
B & C SMALL ENGINES	DARGA LAWRENCE J & DIANE C	HALVERSON ROBERT B & MARY	MARTIN LAURA A	PINES MICHAEL	THOMPSON VIRGINIA M
BANASHAK STEVE T	DAVIS MICHAEL A	HARRINGTON EUGENE	MAXSON WILLIAM D & LEONA M	PLATZKE CLARENCE	THOMPSON WILLIAM F JR & THERESA M
BARGEON DAYNA L	DELVES ROBERT F & JAY M	HART RITA I	MAYHEW BECKY M	POSEN	TIMBER ELK LODGE LLC (FRANK BOWLES)
BARKENQUAST MIKE T	DERHAMMER DOUGLAS L & NANCY	HILLNER LARRY G	MAYNARD VERNON I & FLORENCE	PROKOP COMMUNITY CLINIC (DR JESUS NARI)	TIMBERTOWN LAUNDROMAT I (MICHAEL D SMITH)
BARR NORMA	DESERMEAU VELVET	HOOT EDWARD W & JOHANNA	MAYOL JORGE H & ALTHEA A	POTTER CHEYENNE R	TITUS CHARLES E
BARTLE ROY & LAURA L	DICE HAZEL	HOPP RODNEY G & KIMBERLY	MCCLARY LINDA	POTVIN DOROTHY	TODD ROBERT J & JEAN I
BARTON JON	DICE TROY M & JOANNE M	HOPPE DAVID & PHYLLIS E	MCCLARY WILFRED J	PRAIN ROSIE & ERIC	TREECE COLLEEN Z
BAUR JEWELL	DIERINGER ANDREW C	HOUGHTON ALLEN	MC GEE MARTIN D & MARIANNE C	PRATT LEO A	TRUSCOTT MYRTLE R
BAZVIN WELL DRILLING	DODDER JOHN	HOUSE RAYMOND H	MCLAUGHLIN MELVIN	PROKOP GEORGE A	TUBBS GARLAND E & FRANCES
BELLMORE DOUGLAS J & TRACY L	DONAJKOWSKI LENORE M	HOWLAND FRED	MCNETT SHIRLEY J	PROKOP KRISTIN & GEORGE A	TUBBS JOSEPH A
BENSON LEO D	DRAKE OWNE G & ELSIE	HOYT GARY E & JUDITH E	MEDLEY SCOTT B	RADKA ELMER ESTATE OF	TWEEDLY ROSE M
BIDWELL RODNEY & SANDRA	DROZER ESTELLE	HUBERT SALES & SER (DANIEL SOIK)	MERCER DAVID A & TONYA L	RAKOWSKI ROY R	ULRICH SHARON L
BILLS STELLA	DUNHAM RANDY SR	HURLBURT MICHELLE	MERCHANT DALE & CHERIE	REDICK MARY E	VALLANCE JULIE
BILLS BODY SHOP (BILL STILES)	DUNLAP KAYLA A	HURON OIL COMPANY (ERWIN LEWANDOWSKI)	METTY J C & RLEON	REDMAN ROBERT B	VANDOREN MELINDA
BLANCHARD ROLAND	DUTCHER JEFFREY L	JACOBS CHARLES	MIKOLAJCZYK LAWRENCE E & RITA G	REYNOLDS VADA M	VARGAS DEMIRAE J
BOB NIHRANZ SHELL	EALY LAURENCE W & DOROTHY	JAMISON DON N & SANDRA J	MONTNEY ROBERT L & JOYCE	ROBINSON ROBERT & HEIDI	VICTORIA RANCH (VICTORIA CRUSOE)
BOHNSTEDT PERRY L	EDINGTON ROBERT F	JEFFERS TIA L	MORAN YVONNE	ROLLER CLARE	WALOSIN ROBERT E
BOND DANIEL E	EDWARDS LARRY E & ANNA	JOHNSON LUCILLE	MORAN FOREST PRODUCTS (HARRY MORAN)	RUTENBAR JEANNE A	WAMPLER JENNEFER
BOROWICZ KATHLEEN E	EHLERS DONNA	JOHNSTON DEBRA K & RICK K	MURCH MICHAEL	SAFFORD JERI	WARNER AGNES M
BOYK BRIAN L	EHLERS JOHN S & JOAN	JOHNSTON JAMES E	MURPHY EDWARD N	SCHMIDT JAMES V & JANET	WEAVER RALPH J & LESLIE G
BRASSEUR DIANE M	ELK COUNTRY GIFTS (MARY KUCHARAK)	JONES LAURIE L & JASON S	NAKONECZNY CHRISTINE	SCHRADER LEE & GAIL	WEAVER RICHARD
BRASSEUR HERBERT	ELLSWORTH ELIZABETH	KAMEN RICK D & TAMMY	NASH KAREN K	SCHUSTER RAYMOND SR	WEBBER CREEK HUNT CLUB
BRENNAN DONALD J	ELOWSKY IRENE O	KAZLAUSKAS DENISE	NELSON MIKAELA M	SCHWARTZ ROBERT H	WELCH MICHAEL R
BRISTOL DEANNA L	ENGLAND CLAUDE & BARBARA	KIDDER DAVID C	NELSON REID & GAY	SEAMARK LYNN M	WELLBAUM SUE K
BROWN MICHAEL R	ENGLEHART JILL M	KIEKBUSCH WILLIAM E	NEWSTED SHANNON L	SHAFFER DEBRA	WENDT MARK A
BROWN WALLACE	ENSLEY KIRK A	KLEIN FRED & GALE E	NIERGARTH LEROY	SHEPARD SANDRA M	WHEELER ANN
BUCHOLTZ TIFFANY L	ERIKSEN BONNIE R	KLINE FRED & MARIA	OBRIEN PATRICK	SHEPPARD ANNE M	WHITE JOSEPH
BURDEN GARY & DIANE	FENSTERMAKER MICHELLE	KNOCH BRIAN & MICHELLE	OCHS ROSE	SHERMAN JAMES F	WHITE JULIA
BURNS GERALD M	FERGUSON RICK	KOLCAN CHARMINE	ODLE EDWIN III	SHUMATE WALLACE	WHITE KENNETH
CADIEUX THERESA A	FIELDS WAYNE & LAURIE	KOSMACK CLARE L & JEAN M	OHSOWSKI FRANK	SIMMONS KATHERINE M	WILDE VIVIAN
CAMPBELL DANIEL J	FINLAN ARCHIE J	KRISS ANDREW P	OLIVER JAMES	SINACOLA DENNIS J	WILHELM JOSEPH A
CANSLEY NANCY	FLETCHER RANDY	LAFAVE RONALD & BECKY	OLSON VICKI L	SIRKO JOHN	WILLIAMS CHANDRA
CARPENTIER KIM M	FOSTER JAMES E	LAFRANCE GENEVIEVE	ONAWAY SPEEDWAY INC (HARRY MORAN)	SKOCZYLAS JUDITH	WOFFORD (ANDERSON) LOIS
CARROLL MARY L	FRASURE JAMES	LANCEWICZ HATTIE	OPPER JOHN JR & JERRIE	SLATER NORMAN L SR & GRACE J	WOLGAST JOHN
CARTER DOUGLAS E & SUSAN	FRESKE MARK A & CHERYL L	LANGWORTHY JEFF L	ORM JERRY D	SMITH AMBER R	WOLOSZYK BENJAMIN JR
CASWELL TRISTA L	FRITZ ROSELLA	LARRY'S AUTO BODY (LARRY KEETCH)	ORMSBEE KATHY A & ROGER	SMITH CHARLES	WOLOSZYK ROGER
CHAPPA MARK G	GAGNON DANIEL A	LATENDRESSE EDWARD JR	ORMSBEE ROGER L	SMITH CLARENCE H	WOLOZYK ANTHONY
CHARBONEAU RICHARD M & TRACEY	GALBRAITH SCOTT W	LAVIOLA JOSEPH	OSBONE GREG	SMITH DONALD W	WOLTER CLAUDIA U
CHENOWETH RUSSELL J	GARMS RUBY	LEE BARBARA A	OSMON RICHARD L	SMITH GAIL	WOOD DEBORAH J & MARK
CIRCLE SCAMPGROUND (BILLY SEXTON)	GEDA RICHARD R	LEE LANNY & DENISE	OSTWALD MELODY A	SMITH HELLENA & RAYMOND	WOZNAK LORETTA L
CLINE EDWIN D	GILMORE ROBERT L	LEWANDOWSKI DONNA	PAAD JAMES A SR	SMITH I W	ZALEWSKI PAUL A
CLINK DAVID & SANDRA	GLACKLIN GARY	LIVINGSTON CHAS P & DOROTHY	PAQUET DANIEL A	SMITH ROGER A & GLORIA J	ZIMMERMAN DARRIN & LISA
CLINK DAVID A	GLEASON AMANDA D		PAQUIN FRANCIS P	SPRATT TAVERN (NOOMI THOMPSON)	ZOLMAN PEGGY I
COATS RICHARD G	GODIN DANIELLE J		PARKER CONNIE M	STEWART MICHAEL E D	ZRAKOVI LUCILLE
COLE LYLE E	GOODWIN DAVID & JOYCE		PAVEY JOYAL D	STRICKLAND MATTHEW & SUSAN M	
CONANT GEORGE L	GORDIER ELLA & TIMOTHY		PELTIER FREIDA	STROHSCHIEIN JANET	
COOK PHILLIP & VICKIE				SWINDLE SEAN J	
COPELAND LYLE					
CORBIN JEFFREY O					
COUTURE CUSTOM FLOOR COVERING NORTH					

Country Lines, Your Communications Partner



For over 35 years, our co-op members have received *Michigan Country Lines* because it is the most effective and economical way to share information with our members. This is our most empowering communication tool to keep members up-to-date about everything going on within their electric co-op.

Each issue contains information about our services, director elections, member meetings, and the staff and management decisions you need to know about as an owner of the co-op.

The magazine also includes legal notices that would otherwise have to be placed in local media at a substantial cost. And, sending *Michigan Country Lines* to you helps the co-op fulfill one of its important principles—to educate and communicate openly with its members.

The board of directors authorizes the co-op to subscribe to *Michigan Country Lines* on your behalf at an average cost of \$3.91 per year, paid as part of your electric bill. The current magazine cost is 48 cents per copy—less than the cost of a first class stamp. *Michigan Country Lines* is published for us, at cost, by the Michigan Electric Cooperative Association in Lansing. As always, we welcome and value your comments.

Statement of Non-Discrimination

In accordance with Federal civil rights law and U.S. Department of Agriculture (USDA) civil rights regulations and policies, the USDA, its Agencies, offices, and employees, and institutions participating in or administering USDA programs are prohibited from discriminating based on race, color, national origin, religion, sex, gender identity (including gender expression), sexual orientation, disability, age, marital status, family/parental status, income derived from a public assistance program, political beliefs, or reprisal or retaliation for prior civil rights activity, in any program or activity conducted or funded by USDA (not all bases apply to all programs). Remedies and complaint filing deadlines vary by program or incident.

Persons with disabilities who require alternative means of communication for program information (e.g., Braille, large print, audiotope, American Sign Language, etc.) should contact the responsible Agency or USDA's TARGET Center at (202) 720-2600 (voice and TTY) or contact USDA through the Federal Relay Service at (800) 877-8339. Additionally, program information may be made available in languages other than English.

To file a program discrimination complaint, complete the USDA Program Discrimination Complaint Form, AD-3027, found online at http://www.ascr.usda.gov/complaint_filing_cust.html and at any USDA office or write a letter addressed to USDA and provide in the letter all of the information requested in the form. To request a copy of the complaint form, call (866) 632-9992. Submit your completed form or letter to USDA by:

(1) mail: U.S. Department of Agriculture
Office of the Assistant Secretary for Civil Rights
1400 Independence Avenue, SW
Washington, D.C. 20250-9410;

(2) fax: (202) 690-7442; or

(3) email: program.intake@usda.gov.

This institution is an equal opportunity provider.

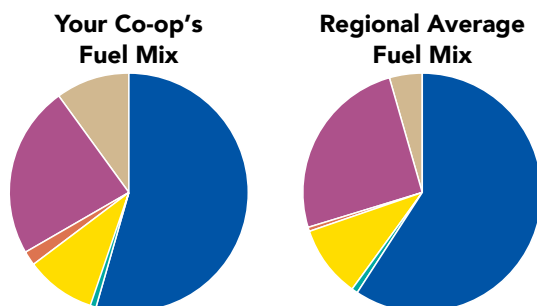
Fuel Mix Report

The fuel mix characteristics of Presque Isle Electric & Gas Co-op as required by Public Act 141 of 2000 for the 12-month period ended 12/31/15.

COMPARISON OF FUEL SOURCES USED

Regional average fuel mix used		
Your co-op's fuel mix		
FUEL SOURCE		
Coal	53.0%	55.0%
Oil	0.5%	0.6%
Gas	16.1%	12.8%
Hydroelectric	1.3%	0.7%
Nuclear	21.6%	25.7%
Renewable Fuels	7.5%	5.2%
Biofuel	0.9%	0.7%
Biomass	0.4%	0.5%
Solar	0.1%	0.1%
Solid Waste Incineration	0.1%	0.0%
Wind	5.6%	3.4%
Wood	0.4%	0.5%

NOTE: Biomass above excludes wood; solid waste incineration includes landfill gas; and wind includes a long-term renewable purchase power contract in Wolverine's mix, but does not include renewable energy credits (RECs) that bring the total for renewable fuels above 10%.



EMISSIONS AND WASTE COMPARISON

TYPE OF EMISSION/WASTE	lbs/MWh	
	Your Co-op	Regional Average*
Sulfur Dioxide	5.9	7.6
Carbon Dioxide	1,637	2,170
Oxides of Nitrogen	1.9	2.0
High-level Nuclear Waste	0.0070	0.0083

*Regional average information was obtained from MPSC website and is for the twelve-month period ending 12/31/15.

PIE&G purchases 100% of its electricity from Wolverine Power Supply Cooperative, Inc. which provided this fuel mix and environmental data.

STATE OF MICHIGAN

BEFORE THE MICHIGAN PUBLIC SERVICE COMMISSION NOTICE OF HEARING FOR THE MICHIGAN REGULATED GAS DIVISION CUSTOMERS OF PRESQUE ISLE ELECTRIC & GAS CO-OP CASE NO. U-17945

- Presque Isle Electric & Gas Co-op requests Michigan Public Service Commission approval to implement a gas cost recovery (GCR) plan and a uniform GCR factor of \$0.4941 per hundred cubic feet (CCF) for the period of April 1, 2016 through March 31, 2017, plus additional amounts contingent on future events for its Regulated Gas Division customers.
- The information below describes how a person may participate in this case.
- You may call or write Presque Isle Electric & Gas Co-op, 19831 M-68, P.O. Box 308, Onaway, Michigan 49765, (800) 423-6634 for a free copy of its application. Any person may review the application at the offices of Presque Isle Electric & Gas Co-op.

The first public hearing in these matters will be held:

DATE/TIME: Thursday, March 24, 2016, at 9:00 a.m.

This hearing will be a prehearing conference to set future hearing dates and decide other procedural matters.

BEFORE: Administrative Law Judge **Mark E. Cummins**

LOCATION: Michigan Public Service Commission
7109 West Saginaw Highway
Lansing, Michigan

PARTICIPATION: Any interested person may attend and participate. The hearing site is accessible, including handicapped parking. Persons needing any accommodation to participate should contact the Commission's Executive Secretary at (517) 284-8090 in advance to request mobility, visual, hearing or other assistance.

The Michigan Public Service Commission (Commission) will hold a public hearing to consider Presque Isle Electric & Gas Co-op's (Presque Isle) December 30, 2015 application for approval of a gas cost recovery (GCR) plan and gas cost recovery factor of \$0.4941 per CCF for the period of April 1, 2016 through March 31, 2017, plus additional amounts contingent on future events for its Regulated Gas Division customers. Presque Isle's requested contingent GCR factor ceiling prices would be calculated using a Quarterly Adjustment Process, which could potentially increase the GCR factor, as described in its application, to reflect a portion of market increases in the price of gas on the New York Mercantile Exchange (NYMEX).

All documents filed in this case shall be submitted electronically through the Commission's E-Dockets website at: michigan.gov/mpscdockets. Requirements and instructions for filing can be found in the User Manual on the E-Dockets help page. Documents may also be submitted, in Word or PDF format, as an attachment to an email sent to: mpscdockets@michigan.gov. If you require assistance prior to e-filing, contact Commission staff at (517) 284-8090 or by email at: mpscdockets@michigan.gov.

Any person wishing to intervene and become a party to the case shall electronically file a petition to intervene with this Commission by March 17, 2016. (Interested persons may elect to file using the traditional paper format.) The proof of service shall indicate service upon Presque Isle's attorney, Shaun M. Johnson, Dykema Gossett PLLC, Capitol View, 201 Townsend Street, Suite 900, Lansing, Michigan 48933.

Any person wishing to appear at the hearing to make a statement of position without becoming a party to the case may participate by filing an appearance. To file an appearance, the individual must attend the hearing and advise the presiding administrative law judge of his or her wish to make a statement of position. All information submitted to the Commission in this matter becomes public information, thus available on the Michigan Public Service Commission's website, and subject to disclosure. Please do not include information you wish to remain private.

Requests for adjournment must be made pursuant to the Michigan Administrative Hearing System's Administrative Hearing Rules R 792.10422 and R 792.10432. Requests for further information on adjournment should be directed to (517) 284-8130.

A copy of Presque Isle's request may be reviewed on the Commission's website at: michigan.gov/mpscdockets and at the office of Presque Isle Electric & Gas Co-op. For more information on how to participate in a case, you may contact the Commission at the above address or by telephone at (517) 284-8090.

Jurisdiction is pursuant to 1909 PA 300, as amended, MCL 462.2 et seq.; 1919 PA 419, as amended, MCL 460.54 et seq.; 1939 PA 3, as amended, MCL 460.1 et seq.; 1969 PA 306, as amended, MCL 24.201 et seq.; 1982 PA 304, as amended, MCL 460.6h et seq.; and the Michigan Administrative Hearing System's Administrative Hearing Rules, 2015 AC, R 792.10401 et seq.

January 28, 2016

Greek-Style Scampi (pictured)

Patrick Simmer, Dewitt

- 6 oz. uncooked angel hair pasta
- 1 t. olive oil
- ½ c. chopped green bell pepper
- 2 t. bottled minced garlic
- 14.5 oz. can diced tomatoes with basil, garlic, oregano; undrained
- ⅛ t. black pepper
- 1 lb. peeled & deveined medium uncooked shrimp
- ⅛ t. ground red pepper
- 6 T. crumbled feta cheese

Cook pasta according to package directions, omitting salt. Drain pasta and keep warm. Heat oil in a large nonstick skillet over medium-high heat. Add green bell pepper to pan; sauté 1 minute. Add garlic and tomatoes; cook 1 minute. Add black pepper and shrimp; cover and cook 3 minutes or until shrimp is done (don't overcook). Stir in red pepper; remove from heat. Place 1 c. pasta on each of four plates. Top each serving with 1 c. shrimp mixture and 1 ½ T. feta cheese.

Pasta Salad

Becky Beard, Portland

- 1 lb. tri-color spiral pasta
- ¼ c. red or green pepper, chopped
- ¼ c. green olives
- ½ c. cucumber, chopped
- ¾ c. cherry or grape tomatoes, cut in half
- ½ c. feta cheese
- ¼ c. red onions, chopped
- ¼ c. pepperoni slices, cut in quarters
- 1 c. Zesty Italian dressing (or more if needed, to taste)

Cook the pasta according to package directions. Drain and rinse with cool water. Mix with remaining ingredients in a large bowl. Refrigerate until chilled.



Pistachio Pesto Pasta

Christin McKamey

- 8 oz. pasta (gluten free, if desired)
- 2 c. fresh baby spinach, packed
- ½ c. shelled pistachios, roasted and unsalted
- 2 c. fresh basil leaves, packed
- 2 garlic cloves, minced
- ¼ c. extra virgin olive oil
- 1 T. white wine vinegar
- 1 T. fresh lemon juice
- ½ t. ground sea salt, or to taste
- ¼ t. freshly ground black pepper

Cook pasta according to package directions. Drain and set aside. In a food processor or high powered blender, add the remaining ingredients. Blend until chopped and thoroughly combined. Mix the pesto with the hot pasta and stir to combine. Serves 4. Will last in the fridge about four days.

Creamy Ranch Pasta Salad

Karen Beard, Portland

- ½ box shaped pasta
- 1 head broccoli, chopped
- 1 c. frozen peas, thawed
- ½ pkg. mini pepperoni slices
- 4 oz. Monterey Jack cheese, chopped into small pieces or shredded
- 12 small carrots, chopped
- Ranch dressing (we use the packet and make our own...tastes much better)

Cook pasta according to package directions. Drain and run cold water over pasta to cool it. Combine rest of ingredients, except the ranch dressing, into a bowl. Pour cooled pasta into the bowl, then stir in dressing (as much as you like).

SUBMIT YOUR RECIPE!

Thanks to all our readers who send in recipes. Please send in your favorite "Quick and Easy" recipes by **April 1** and "BBQ" recipes by **May 1**.

Enter your recipe online at countrylines.com or send to (handprint or type on one side, please): Country Lines Recipes, 201 Townsend St., Suite 900, Lansing, MI 48933. Please note the co-op from which you receive your electric service.

A RECIPE WINNER EVERY MONTH!

Contributors whose recipes we print each month will be entered in a drawing and *Country Lines* will pay a \$50 credit on the winner's electric bill! A winner will be selected every month.

Notice to Members of Presque Isle Electric & Gas Co-op

A special board meeting is set for March 22, 9 a.m., at the cooperative's Onaway office

The board of directors will consider changes to the cooperative's rates and tariffs at its meeting on March 22, 2016, to be held at 19831 M-68 Highway, Onaway, MI. The meeting will start at 9 a.m. and is open to all members of Presque Isle Electric & Gas Co-op.

The session will begin with an opportunity for members to provide direct input to the board of directors. Members are asked to come to the lobby by 8:45 a.m. and request to speak to the board; staff will direct interested members to the meeting room. Time constraints on each member's comments will be at the discretion of the board chairman, but members are asked to keep comments to less than 5 minutes.

The following items will be discussed:

1. Reconciliation of the 2015 Power Supply Cost Recovery Factor collections;
2. Review and approval of the 2015 Electric Times Interest Earned Ratio (TIER) analysis; and
3. Consideration of revisions to the cooperative's billing rules.

Notices of changes or additions, if any, to the cooperative's rates or service rules, shall be sent to all members, as required by P.A. 167, by first class mail or by publication in *Michigan Country Lines* at least 30 days prior to their effective date.

Participation: Any interested member may attend and participate. Persons needing any accommodation to participate should contact Presque Isle Electric & Gas Co-op at 800-423-6634 a week in advance to request mobility, visual, hearing or other assistance. Comments may also be made before the meeting date by calling CEO Brian Burns at 800-423-6634, or by email at bburns@pieg.com.



The Lewiston Chamber of Commerce received a \$900 grant from the PIE&G Communities First Fund for the Movies in the Park program. The program will provide area families with a night of fun at no cost. Pictured (from left): Christine Saint George – Albert Twp. planning & zoning administrator; Elaine Dixon – president, Lewiston Chamber of Commerce; and Betty Comoford, PIE&G Communities First Fund director.



WE'RE HERE FOR YOU.

365 days a year.

National Lineman Appreciation Day
April 11, 2016

Let's honor the heroes that keep the lights on.



Your Board In Action

At their most recent regular meetings the PIE&G Board of Directors:

- Adopted a resolution acknowledging director Robert Wegmeyer's 40 years of service to Presque Isle Electric & Gas Co-op and its membership.
- Acknowledged and commended Sharon Krzywiecki for her 17 years and eight months of dedicated and loyal service to the cooperative and its membership. Sharon served as the executive administrative assistant and retired on Jan. 15.
- Thanked employees for their efforts during the Christmas Eve windstorm, and heard leadership team reports on its impact to electric reliability and the co-op's expenses. The event cost the co-op approximately \$600,000 and the employees much time without their families during the holidays.
- Set direction on filling director Wegmeyer's vacancy on the board.
- Reviewed report by CFO Sobeck regarding management of the co-op's long-term debt portfolio pursuant to "Board Policy #201—Debt Portfolio Management." Authorized management to borrow up to \$2.5 million in long-term debt in the year 2016.
- Authorized quarterly write-offs for uncollectible debt in the amount of \$19,996.98.
- Accepted team reports of CFO Sobeck, manager of operations and engineering Szymoniak, manager of information systems Kieliszewski and CEO Burns.
- Adopted revisions to the board's policy manual as recommended by the policy committee, effective immediately.
- Set its next board meeting for member regulation matters for March 22 at 9 a.m. at the cooperative's office in Onaway. ■

PIE&G Closed on Good Friday

Presque Isle Electric & Gas Co-op will be closed on March 25, in observance of Good Friday. Access your account 24/7 at pieg.com, or download the free SmartHub app for your tablet or smart phone. You may also pay or report readings by calling 1-866-999-4571.

HIGH-SPEED INTERNET WITH DOUBLE SAVINGS



PIE&G
PRESQUE ISLE ELECTRIC AND GAS CO-OP
A Touchstone Energy Cooperative

exede
INTERNET

SUPER FAST

Speeds up
to 12 Mbps

**PROMPT &
PROFESSIONAL**
Installation

RELIABLE

Customer
Support 24/7

AFFORDABLE
Service for
about \$2 a day

Exede High Speed Internet lets you do all the things you want to do—shop, download music, and stream movies and TV shows—super-fast and at super savings! It's the Internet service that delivers 140% of its advertised speed* and is backed with the reliability and support of NRTC Rural Broadband, the organization dedicated to providing technology solutions to rural communities across the country.

Call 888-256-8348 for member discount

*FCC, 2013 Measuring Broadband America



Art on Ice

By Emily Haines Lloyd

When she was younger, Stephanie Miller wanted a career in education—art, to be exact. She never became an art teacher, but she most definitely became an artist and a teacher.

For over 25 years, Miller has built her life around one of her true passions—ice skating. Spending many years at ice rinks around Metro Detroit, Miller became a successful competitive skater and an impassioned stylist. Bored with the uninspired costumes available to her, she started beading her own skating outfits. Before she knew it, other skaters were begging her to help them spruce up their costumes.

"I'm the unlikely story. I got my 'degree' in skating," said Miller. "I was a skater who had an artistic eye and before I knew it, I had a career."

Accident or not, the trajectory of Miller and her partner, Luanne Williams' business is nothing short of impressive.

Once a week, Miller leaves her small town of Kingsley, just 15 miles outside Traverse City, and travels to the Detroit Skating Club, where she and Williams (from Grass Lake) take over the rink's Club Room. There, skaters wait in line to meet with the designers about upcoming competition costumes and what will make them stand out on the ice.

The two have created costumes for an impressive list of world-renowned skaters, including Olympic gold medalists Meryl Davis and Charlie White. Davis wore one of Miller's designs when the duo won their gold medal in Sochi. She has designed Davis' costumes for nearly 20 years—a testament to the trust and respect the skating community has for Miller and Williams.

"I am always on the skater's side," said Miller. "I listen to their music, to what they like or don't like



and I encourage them to listen to their gut. They are the one that has to go out and perform in this costume. They have to love it."

While many have recommended that Miller collaborate with an apparel shop to mass-produce her designs, the costume veteran can't fathom it.

"My heart is in custom, original designs," she explains. "I love having a new piece of artwork to focus on. Otherwise, I would be bored out of my mind."

When she's not creating fresh designs and meticulously adhering stones, Miller is a coach at the Traverse City Skating Club. She's become the teacher she always wanted to be—grooming a new generation of skaters and possibly even clients.

When she drives home at the end of a day of coaching, she's inspired by any number of things, a billboard or the pure aqua blue of Traverse Bay. Before she knows it, there's a new idea for a costume for the artist/teacher who always seems to be working.

"I see something like the water in the bay and all I can think is how great that color will look on the ice." ■

Above: Wearing costumes designed by Miller, are Frances Rossiter (left), 12, a national skater from MI, and Anna Rossiter, 11, a top regional skater who started at age 3.

Photos—Dre Photography





Bay Cliff Health Camp, A Place Apart

By Yvonne Whitman

Nestled in the north woods high above the shores of Lake Superior, approximately 28 miles outside of Marquette, is Bay Cliff Health Camp. The camp was founded in 1934, during the Great Depression, by co-founders Elba Moore and Goldie Corneliuson, a field physician for The Children's Fund of Michigan (forerunner to the Public Health Department).

Earlier, the health professionals had traveled throughout the Upper Peninsula caring for children who were malnourished and underweight due to the impoverished conditions of the times. They often talked about how ideal it would be to bring these children to an outdoor location where they would be given three meals a day, enjoy the fresh air, and be involved in camping experiences. What a difference it could make in the lives of children! As their dream began to take shape, they knew it would require a special place.

In 1934, through generous donations, they purchased an abandoned Big Bay dairy farm, a cow barn was converted into a dormitory, and the first program began with 107 children. In a summer filled with good food and camping fun, each camper gained an average of 5 pounds. They went home healthier, and the program was deemed a success.

The camp's success continued until 1940, when the polio epidemic caused U.P. hospitals to overflow with hundreds of children left paralyzed

Top: The stunning view of Lake Superior from the gazebo on the Bay Cliff campus.



Crystal Bourassa, of Dickinson County, has spent 11 summers at Bay Cliff. "Bay Cliff has taught me how to say the 'r' sound. I learned to swim, and this year I learned how to skip a rock. I learned bike riding here. A friend tried to teach me, and a man tried, too. Bay Cliff finally did," said Crystal.



Bay Cliff camper Rayna Sherbinow with her prom date.



A group of Bay Cliff campers enjoy making S'mores around the campfire.



The daily flag ceremony that is performed each morning and evening at Bay Cliff.



Physical therapist Julia King helps a Bay Cliff camper ride a bike.

by the disease and in need of rehabilitation therapy. While health and wellness in the form of good nutrition would always remain a strong concept of Bay Cliff, it would now also include an emphasis on therapy and rehabilitation for children with physical disabilities, and it has been a summer therapy camp ever since. Today, the therapy program serves children with low vision and blindness, speech and language impairments, hearing loss and deafness, and physical disabilities. The camp also provides occupational, music and physical therapy, and instructional classes for children with hearing or visual impairments.

Each year, approximately 175 children attend a seven-week summer session at Bay Cliff, which includes both typical camp fun and therapy sessions. A typical day for a camper begins with reveille, a flag ceremony, and then breakfast (all meals are eaten family style with staff). Therapy and activity sessions continue throughout the day between breaks for lunch and dinner and rest periods. Camp days conclude with an all-camp activity such as a sing-along, dance party or talent show. A dedicated staff of professionals is a huge reason for Bay Cliff's success. "Bay Cliff is truly a place apart," explains physical therapist Julia King. "A place where trying new things such as bike riding, kayaking, walking

with crutches, and driving a power wheelchair with head control is expected. A place where the phrase 'triumph is simply trying with some umph' behind it' is true. Little things in life are not so little. It often requires a place like Bay Cliff to teach us this fact."

And, what kind of impact does Bay Cliff have on a child who attends?

"Every year I'm learning new things," says Rayna Sherbinow, who lives in Schoolcraft County and has attended the camp for nine summers. "I've improved and learned things that weren't even goals. Because we work so hard here, it transfers to school and home. At school, people only see the outside. Here, there is acceptance. It's the best part."

Funding for Bay Cliff has always been through contributions from the general public, including service clubs, fraternal organizations, businesses, foundations, industry, and public spirited individuals. If you are interested in learning more about Bay Cliff Health Camp, email baycliff@baycliff.org or call 906-345-9314.

Bay Cliff receives electric service from a Michigan electric cooperative, which is proud to serve and support this camp. ■

Surf's Up!

While most of us prepare for a snow storm by stopping by the gas station or grocery store, one Northern Michigan native is waxing her surf board. Her surf board? Yes, and a few adventurous souls like Ella Skrocki, 21, catch waves on the Great Lakes year-round.

A student at Northern Michigan University majoring in environmental studies, Ella grew up in the small coastal town of Empire where her parents own Sleeping Bear Surf and Kayak Shop. Brought up with the heart of a surfer, Ella attended surf camps in California where fellow students found the idea of surfing the Great Lakes far-fetched.

But there's nothing improbable about it, and many seasoned Great Lakes surfers prefer the winter waves because of their size and frequency. Ella caught a few 30 footers during a recent storm, describing the experience as "very rewarding." Put in perspective, the waves on Lake Superior that



sank the Edmund Fitzgerald in 1975 reached heights of up to 35 feet.

Waves big enough to sink a freighter present additional challenges including frostbite, dirtier water, and shorter wave periods (7 seconds between crests versus an average of 20 seconds on the ocean). So, why does Ella do it? "When I find the motivation to get out there during a blizzard and catch that one wave, it's so empowering!"

Sure, winter surfing can be brutal but Ella has the proper gear to stay warm and though she admits her "face will get a little numb" on occasion, a touch of grease on her cheeks takes the sting out of winter's icy chill.

If surfing the Great Lakes sounds like an activity worth exploring, Michigan's surfing community is a great place to start. A tight-knit group, they are happy to offer encouragement, tips and lessons. And while we're grumbling during the next



Jack O'Malley

winter storm warning, a small contingent of extreme sports enthusiasts will be gearing up for a wave even the most seasoned ocean surfer would be stoked to catch.

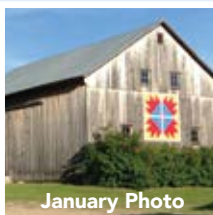
Visit Sleeping Bear Surf and Kayak Shop at sbsurfandkayak.com. ■



<<< Where In Michigan Is This?

Every co-op member who identifies the correct location of the photo at left by **March 18** will be entered in a drawing to win a \$50 electricity bill credit from their electric co-op.

We do not accept Mystery Photo guesses by phone. Enter your guess at countrylines.com or send by mail to: *Country Lines* Mystery Photo, 201 Townsend St., Suite 900, Lansing, MI 48933. Include the name on your account, address, phone number, and name of your co-op.



January Photo

Our Mystery Photo Contest winner from the January 2016 issue is John Stocki, a Cherryland Electric co-op member who correctly identified the photo as the Marilla Museum and Pioneer Place.





AMERICAN METAL ROOFS Customer Stories...



“It was a great experience...”

Sharon Somers is talking about her roof. Yes, her roof.

And shouldn't the purchase and installation of every new roof be a great experience? Unfortunately, for many homeowners it's not.

That's why Frank Farmer started American Metal Roofs back in 2000. After more than 10 years in the home improvement business, he knew the winning formula. If he could combine a superior product with a well-thought-out installation process and outstanding customer service, he knew that homeowners would flock to do business with him.

Fifteen years and over 3,000 roofs later, American Metal Roofs is still creating great roofing experiences all over the state of Michigan. Permanent, beautiful and guaranteed, our roofs offer you peace-of-mind not available with a temporary roofing solution. Whether in one of our showrooms, on our website or talking with one of our experts, we invite you to look into an American Metal Roof for your home.

It's a great experience.

VISIT OUR SHOWROOMS:

FLINT - 6140 Taylor Drive • CHARLOTTE - 1875 Lansing Road

Call Today! 844.638.2576 844.METAL.ROOFS

Read More Customer Stories and Watch the Video at:
AmericanMetalRoofs.com
See Dozens of Pictures • Enter to Win a Metal Roof • Request a Quote



Keep Our Expanded Crews Busy This Month-
Save \$125.00 per square on Designer Metal Shingles,
Standing Seam Metal Roofs, Pole Barn Roofs, and Agricultural Roofs!
Give us some flexibility on the installation date and we will give you an additional \$1,000 off your order.

ELEVATE YOUR FUTURE

YOU ARE A LEADER. Whether it's in the classroom

or in your community, you guide and inspire others to contribute their best efforts. Your electric cooperative has two **FREE** programs to help students like you develop strong leadership habits, explore career opportunities in the electric industry, and engage in the democratic process. Learn more about the **Youth Leadership Summit** and **Washington, D.C. Youth Tour** at miYLS.com. You are a leader. **YOU ARE THE FUTURE.**



WANT TO LEARN MORE? Watch the videos and apply online at miYLS.com.



Youth Leadership Summit
April 27-29 | SpringHill Camp, Evart, MI



Electric Cooperative Youth Tour
June 11-16 | Washington, D.C.