

MICHIGAN COUNTRY LINES

art
WINS HEARTS OF THE PUBLIC
Twice

Plus!

2015 Annual Report Inside

Members Make Annual Meeting A Success

Local Bounty At Les Cheneaux Culinary School



**Act now to receive a
30% Federal tax credit**

7 Series
*Ultimate comfort
and efficiency*



Time is running out to take advantage of a 30% tax credit for geothermal

You may not realize it, but right beneath your feet is an almost unlimited reservoir of stored solar energy. A WaterFurnace geothermal system taps into this free and renewable resource to provide savings of up to 70% on heating, cooling and hot water—with a comfort you have to experience to believe. Right now you can save thousands on installation thanks to a 30% federal tax credit. But hurry, the credit is only available through the end of 2016. Contact your local WaterFurnace dealer today to learn more!

YOUR LOCAL WATERFURNACE DEALERS

Bad Axe
B & D Htg
(989) 269-5280
bdheating.com

Berrien Springs
WaterFurnace
Michiana
(269) 473-5667
gogreenmichgeothermal.com

Big Rapids
Stratz Htg & Clg, Inc.
(231) 796-3717
stratzgeocomfort.com

Caro
AllTemp
Comfort, Inc.
(866) 844-HEAT (4328)
geo4less.com

Carsonville
Certified Temperature
Innovations
(810) 300-7748

Clifford
Orton Refrig & Htg
(989) 761-7691
sanduskygeothermal.com

DeWitt
S & J Htg & Clg
(517) 669-3705
geothermalservicesofmichigan.com

Grand Rapids
Total Comfort
Resource, LLC
(616) 406-3182
totalcomfortresource.com

Hart/Ludington
Adams Htg & Clg
(231) 873-2665
adamsheatingcooling.com

Indian River
M & M Plmb & Htg
(231) 238-7201
mm-plumbing.com

Jackson/Adrian
Comfort 1
Htg & A/C
(517) 764-1500
comfort1.net/geothermal

Kalkaska
Kalkaska Plmb & Htg
(231) 258-3588
kalkaskageothermal.net

Mt Pleasant
Walton Htg & Clg
(989) 774-1566
waltonheating.com

Muskegon
Adams Htg & Clg
(231) 873-2665
adamsheatingcooling.com

Kiessel Geothermal
Htg & Clg
(231) 747-7509
kiesselsgeo.com

Portland
ESI Htg & Clg
(517) 647-6906
esiheating.com

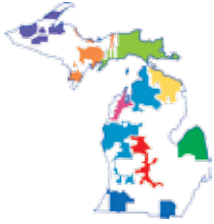
Sunfield
Mark Woodman
Plmb & Htg
(517) 886-1138
mwphonline.com

Traverse City
Geofurnace Htg & Clg
(231) 943-1000
watergeofurnace.com
D & W Mechanical
(231) 941-1215
dwgeothermal.com



waterfurnace.com/Credit

WaterFurnace is a registered trademark of WaterFurnace International, Inc. ©2016 WaterFurnace International, Inc.



Michigan's Electric Cooperatives
countrylines.com

July/August 2016
Vol. 36, No. 7

Executive Editor
Casey Clark

Editor
Christine Dorr

Publisher
**Michigan Electric
Cooperative Association**

Design and Layout
Ciesa Design

Michigan Country Lines, USPS-591-710, is published monthly, except August and December, with periodicals postage paid at Lansing, MI, and additional offices. It is the official publication of the Michigan Electric Cooperative Association, 201 Townsend St., Suite 900, Lansing, MI 48933.

Subscriptions are authorized for members of Alger Delta, Cherryland, Great Lakes, HomeWorks Tri-County, Midwest Energy, Ontonagon, Presque Isle, and Thumb electric cooperatives by their boards of directors.

POSTMASTER: SEND ALL UAA TO CFS.

Association officers are **Robert Kran**, Great Lakes Energy, chairman; **Mark Kappler**, HomeWorks Tri-County Electric, vice chairman; and **Eric Baker**, Wolverine Power Cooperative, secretary-treasurer. **Craig Borr** is president and CEO.

CONTACT US/LETTERS TO EDITOR:

Michigan Country Lines
201 Townsend St., Suite 900
Lansing, MI 48933
248-534-7358
cdorr@meca.coop
countrylines.com



Change of Address:

Please notify your electric cooperative.
See page 4 for contact information.

The appearance of advertising does not constitute an endorsement of the products or services advertised.

IN THIS ISSUE

- 6 **OUR ENERGY**
How To Prevent Carbon Monoxide Poisoning
- 10 **COOKING COMMUNITY**
BBQ - A Michigan Summer Favorite
Christin McKamey & Our Readers
New! Join Our Online Cooking Community
- 14 **FEATURE**
Art Wins Hearts Of The Public Twice
Emily Haines Lloyd
- 18 **READERS' PAGE**
The Glamping Trend
Jack O'Malley
Guess Our New Mystery Photo

IN YOUR WORDS

Last month, we asked electric co-op members a question:

If you could spend the day with any celebrity, who would it be?

Thank you for all the responses. Here are some of your answers...

"Shirley Jones. I fell in love with that woman when she played Marian the Librarian in The Music Man. That face, that voice."

"The NCIS crew, Definitely! I could hang out with Gibbs, and his crew in DC to see all the monuments; Pride, and his crew in New Orleans for some of that Cajun cookin' and Dixieland jazz; then Hettie and her crew in LA for some California dreaming."

Our new Question of the Month is:

Where can you get the best burger in Michigan?

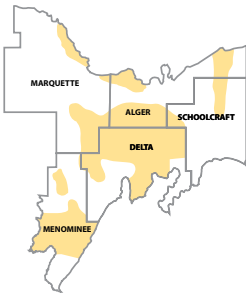
Please submit answers to countrylines.com by September 1.

ON THE COVER

Ann and Steve Loveless of Beulah, MI, stand in front of the winning panoramic landscape that they brought to life at the 2013 Michigan ArtPrize competition.

*Some co-op editions have a different cover.

Photo-Steve Loveless



Board Of Directors

District 1—Big Bay

Darryl Small
906-345-9369 • smallwld13@yahoo.com

District 2—Harvey/Deerton

Karen Alholm
906-249-1095 • karenalholm@gmail.com

District 3—Grand Marais

Nancy Gardner-Platt
906-494-2772 • rlnkgard@jamadots.com

District 4—Cedar River/Palestine

Dave Prestin
906-424-0055 • cedarriverplaza@gmail.com

District 5—Gourley/LaBranche/Cornell

David Anthony
906-466-2932 • anthony@hannahville.org

District 6—Nathan/White Rapids

Paul Sederquist
906-753-4484 • sedergrove@gmail.com

District 7—Stonington/Rapid River

Sue Alexander
906-399-3666 • smalexander55@yahoo.com

District 8—Nahma/Isabella

Ray Young
906-644-2488 • kyoung@uplogon.com

District 9—Hiawatha/Maple Ridge

Doug Bovin
906-573-2379 • dorobo22@icloud.com

CEO

Tom Harrell
tharrell@algerdelta.com

Headquarters:

426 N. 9th St, Gladstone, MI 49837
906-428-4141 • 800-562-0950
Fax: 906-428-3840 • admin@algerdelta.com
www.algerdelta.com

Office Hours

M–F, 8 a.m.–4 p.m. (ET)

Alger Delta Cooperative is an equal opportunity provider and employer.

algerdelta.com

2015 Alger Delta Cooperative ANNUAL REPORT



Tom Harrell
Chief Executive
Officer

Alger Delta enjoyed another successful year in 2015. In terms of overall performance, 2015 ranks as one of the best years in your cooperative's history. Our audit is complete and, once again, the auditors praised our financial performance and position, procedures and processes, accounting standards and checks and balances. In short, Eide Bailly rendered a "clean opinion" on Alger Delta's books, stating they "present fairly" in all material respects. This is Eide Bailly's second audit at Alger Delta.

Alger Delta's financial performance complies with the obligations required by lenders and regulators.

Alger Delta had net margins of just over \$1.4 million dollars in 2015. Alger Delta is a non-profit corporation and is required by loan covenants, mortgages and other regulations to achieve and maintain margins. Lenders and regulators monitor our performance to ensure that margins provide adequate working capital and the ability to pay debt. The 2015 audit shows that Alger Delta's financial position and resulting ability to meet loan and other financial obligations complies with the mortgage and loan covenants—as well as the requirements set by lenders and regulators.

Four important financial measurements are TIER, Operating TIER, Debt Service Coverage (DSC) and Operating DSC. All four of these ratios are within the performance ranges required by lenders and regulators that monitor our position.

Alger Delta's financial performance can be attributed to several things, including stable wholesale costs, sound financial and operational management, financial planning, returns on invested capital and other factors.

As a non-profit utility, margins are allocated—or assigned—to the members.

One hundred percent of 2015's margins—or patronage capital—has been allocated to members. In a future year, 2015's patronage capital will be paid back to the members whose electric usage helped create the margin.

Alger Delta members benefit from a long-term wholesale power supply agreement.

WPPI supplies wholesale power to 51 utilities in Wisconsin, Iowa and Michigan's Upper Peninsula. As a WPPI member, Alger Delta enjoys an advantage over those who "go it alone" in the energy

marketplace. Aggregating our energy requirements with other members' needs in an energy portfolio managed by WPPI reduces market risk, reduces rate volatility and ensures energy security for all members. This helps keep energy affordable.

WPPI is our partner in energy supply, economic development, efficiency, renewable energy and much more. WPPI's wholesale rates are competitive, and wholesale energy services provide great value to Alger Delta and our members. For these and other reasons, the board of directors voted to extend our current power supply contract with WPPI by an additional 20 years. This means that Alger Delta members have a secure energy future extending through 2055.

Alger Delta is in its third year of a four-year, \$7 million construction work plan.

This work plan includes projects that replace aging infrastructure, create tie lines between different parts of our system, put some parts of the system underground, and improve system protection and coordination. All of these things contribute to improved system reliability, quality of service and speedier outage recovery.

Rates will experience upward pressure in 2016.

Over time, wholesale power, system improvements, the cost of labor and other normal operating costs exert upward pressure on rates. Alger Delta's last rate increase occurred in October 2010. Costs have obviously increased since then, but sound fiscal management has kept rates stable. Alger Delta continuously evaluates our costs and our rates to ensure that costs are recovered through fair and equitable rate structures. From time to time, rates need to be realigned so that some members are not subsidizing other members. Alger Delta is studying this issue to determine if rates need realignment in 2016.

Alger Delta and WPPI lead in reducing greenhouse gas emissions.

WPPI's portfolio of generation resources is one of the lowest greenhouse gas (GHG) emitters in the mid-West. As a result, Alger Delta enjoys exceeding

the compliance threshold of Michigan's RPS; that is, its Renewable Portfolio Standard. Michigan's RPS is 10 percent, and Alger Delta gets about 14 percent of its power from renewable resources including wind, solar and energy from bio-fuels.

Energy Optimization, renewables, and efficiency programs continue to grow.

Alger Delta has invested more than a half-million dollars in renewable energy and efficiency projects. This investment is in the form of cash grants and incentive payments given directly to members who have invested in renewable power generation and energy efficiency projects.

Additional noteworthy accomplishments in 2015 include:

- A three-year labor contract between Alger Delta and the International Brotherhood of Electrical Workers (IBEW). This helps ensure stability in the workforce and is an investment in our employees.
- Termination of the Maple Ridge delivery point. This system change results in energy savings that help pay for nearby line improvements.
- Building renovations. Alger Delta's headquarters is more than 50 years old and in need of renovation and repair. The roof has been repaired, new HVAC units added, and the office space is being renovated to improve working conditions and work flow.

In summary, Alger Delta is in a good financial position. We can meet the obligations of lenders and regulators. The delivery of quality, reliable service continues to improve. We expect incremental upward pressure on rates to continue and will monitor our position to determine what, if any, adjustments are needed. Alger Delta plans to retire capital credits in 2016, provided doing so does not negatively impact equity or cash flow; our equity is more than 24 percent and increasing. Finally, we promise to continue to work hard to provide reliable, safe and affordable electricity. ■

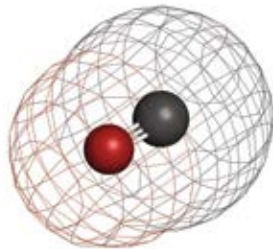


Prevent Carbon Monoxide Poisoning

You can't see, taste or smell carbon monoxide, but it can be deadly. Carbon monoxide, or CO, is a gas that is found whenever fuel is burned. Known as the "silent killer," CO causes an average of 430 deaths per year and more than 20,000 hospital emergency room visits according to the Centers for Disease Control and Prevention (CDC).

Where does carbon monoxide come from?

CO is in fumes produced by items that burn fuel, including kerosene, propane, and gas space heaters, improperly working furnaces, gas water heaters and dryers, wood stoves and fireplaces. Car, truck and boat exhaust fumes contain CO as do fumes from fuel-powered generators and power washers.



How can carbon monoxide poisoning affect your health?

CO is dangerous because it blocks your body from absorbing the oxygen it needs. CO poisoning can occur suddenly or happen over a long period of time. Symptoms depend on the amount of CO a person is exposed to, the length of time exposed, and the general health and age of the person. Mild symptoms

may seem like the flu and include: mild headache and weakness, dizziness, sleepiness, shortness of breath, tightness in the chest, nausea and/or vomiting. High levels of CO or lower levels of CO exposure that last a long time can cause confusion, loss of muscle control, blurred vision, extreme headache, weakness, fainting, convulsions and even death.

Who is most at risk of harm to their health?

Anyone can be at risk for carbon monoxide poisoning. However, those most at risk are:

- infants,
- the elderly, and
- people with heart disease, lung disease, or anemia.

What should you do if you have symptoms of carbon monoxide poisoning?

- Go outside and get fresh air immediately!
- Call 911 and tell them you think you have carbon monoxide poisoning, or go to the emergency room if you are able to get there without help.

A simple blood test done at the hospital can usually detect carbon monoxide poisoning. Medical treatment is available. ■

What can you do to prevent carbon monoxide poisoning?

- **DO** purchase and install carbon monoxide detectors that meet Underwriters Laboratories (UL) standard 2034-95. Follow the manufacturer's instructions for proper placement, use and maintenance. If the detectors plug into the wall, be sure they have a battery backup.
- **DO** leave the house if the alarm sounds on your CO detector. Go to a hospital emergency room or call 911 if anyone is feeling sick. If no one is sick, call the emergency number for your heating service or 911. Stay out of the home until your heating service or fire department says it's okay to go in.
- **DO** have a heating professional inspect, clean, and adjust your fireplace, wood stove, gas appliances including furnaces and water heaters, and chimneys/vents every fall—before the start of home heating season.
- **DO** purchase gas appliances that vent their fumes to the outside. Have them installed by a heating professional.
- **DO** read and follow all of the instructions for any fuel-burning devices.
- **DO** make sure that your car, truck, or boat has a working, airtight exhaust system. Repair exhaust leaks immediately.
- **DO** pay attention to symptoms (headache, dizziness, tiredness and/or a sick feeling in your stomach), especially if more than one person is feeling sick or if people and pets are feeling sick.



- **DON'T** operate fuel-powered machines such as generators, power washers, or mowers in buildings or semi-enclosed spaces.
- **DON'T** cook or heat with a grill indoors, even if you put it inside a fireplace.
- **DON'T** run vehicles in the garage, even if the door is open. Carbon monoxide can build up quickly and enter your vehicle and home.



- **DON'T** sit in a parked vehicle with the engine running for a long period of time, especially if your car is in snow.
- **DON'T** use gas stoves or ovens to heat your home.
- **DON'T** use an un-vented gas or kerosene space heater indoors.
- **DON'T** close the damper to the fireplace unless the fire is completely out and the coals are cold.
- **DON'T** ride in covered pickup truck beds or campers. Air moving around the vehicle can draw exhaust in.
- **DON'T** swim or play near the back of a boat where the motor gives off exhaust.
- **DON'T** ignore symptoms! You could die within minutes if you do nothing.

For more information, contact the Michigan Department of Health and Human Services by calling **1-800-648-6942** or visit **michigan.gov/carbonmonoxide**.

Recycle And Save!

Do you have an old refrigerator or chest freezer taking up valuable space in your basement or garage? While you may not think about these older appliances often, they can be costing you hundreds of dollars each year. Ontonagon REA's Energy Optimization program offers free pick up and recycling of older functioning appliances. You can even earn \$50 for proper removal and disposal of each secondary refrigerator or freezer.

Program Includes:

The free pick up and recycling of the units is handled by the Energy Optimization team. Even more, while our drivers are at your home to pick up your old or inefficient refrigerator or chest freezer, we can also recycle window air conditioners and dehumidifiers. All items must be in working condition.

How To Participate

Contact the Energy Optimization team at **877-296-4319** to schedule an appointment. A representative from our team will come to your home for the pick up, and a cash incentive will be mailed to you. It's that simple!

More Ways To Save!

Are you working on a remodeling project? Your electric utility's Energy Optimization program offers cash incentives for qualifying ENERGY STAR® appliances from refrigerators, washers and dryers, ceiling fans, room air conditioners, televisions and more. Visit michigan-energy.org for a complete list of cash incentives for your home.

Please visit michigan-energy.org for more information, or call **877-296-4319** with any questions.

Cash Incentives Are Available For The Following Functional Appliances:

Appliance Type	Pick up or Ride-Along Item	Incentive Amount
Refrigerator	Pick up	\$50
Chest Freezer	Pick up	\$50
Window Air Conditioner	Ride-Along	\$15
Dehumidifier	Ride-Along	\$15

Limit two appliances per year, per residence.



Ready to upgrade or get rid of an old refrigerator or freezer?

Recycle it and save! Earn cash incentives for recycling your old, functioning appliances.

- **Refrigerator = \$50**
- **Freezer = \$50**
- **Dehumidifier (ride along item) = \$15**
- **Window Air Conditioner (ride along item) = \$15**

Contact the Energy Optimization team to schedule a free pick up.

Shopping for new appliances?

Energy Optimization offers cash incentives for qualifying ENERGY STAR® appliances. Visit our website for a complete list of savings opportunities.

ONLINE: michigan-energy.org

PHONE: 877-296-4319



Energy Optimization programs and incentives are applicable to Michigan electric service locations only. Other restrictions may apply. For a complete list of participating utilities, visit michigan-energy.org.

Alger Delta Electric Co-op Financial Statements *(audited)*

BALANCE SHEET

December 31	2015	2014
ASSETS		
Electric Plant	\$ 34,745,261	\$ 32,413,381
Investments	1,844,490	1,784,022
Current Assets	2,148,060	2,284,270
Deferred Debits	529,670	632,254
Total Assets	\$ 39,267,481	\$ 37,113,927
MARGINS & EQUITIES (NET POSITION)		
Membership & Equities	\$ 347,851	\$ 245,853
Patronage Capital	13,146,058	12,042,256
TOTAL MARGINS & EQUITIES	\$ 13,493,909	\$ 12,288,109
LIABILITIES		
Long-Term Debt, Net	\$ 22,744,449	\$ 21,930,973
Current Liabilities	2,854,755	2,662,540
Deferred Credits	174,368	232,305
TOTAL LIABILITIES	\$ 25,773,572	\$ 24,825,818
TOTAL NET POSITION & LIABILITIES	\$ 39,267,481	\$ 37,113,927

STATEMENT OF REVENUE AND PATRONAGE CAPITAL

Year ended December 31	2015	2014
OPERATING REVENUE	\$ 14,064,386	\$ 13,991,472
OPERATING EXPENSES		
Purchased Power	\$ 6,547,064	\$ 6,493,317
Distribution Expense	2,057,778	2,338,943
Consumer & Customer Service Expense	312,779	295,629
Depreciation	1,434,528	1,316,222
Taxes	421,081	404,859
General & Administrative Expense	1,077,430	1,045,947
TOTAL OPERATING EXPENSES	\$ 11,850,660	\$ 11,894,917
TOTAL OPERATING INCOME	\$ 2,213,726	\$ 2,096,555
Interest Expense	\$ (1,138,444)	\$ (1,182,865)
Interest Income	169,049	166,893
Other Non-Operating Revenues (Expenses), Net	230,530	242,829
CHANGE IN NET POSITION	\$ 1,474,861	\$ 1,323,412

The statements above show the results of the cooperative's electric operations for the calendar year 2015. The Dec. 31, 2015, balance sheet and the related statement of operations for Alger Delta's electric operations were prepared in conformity with generally accepted accounting principles applied on a basis consistent with that of preceding years. The board of directors has accepted these statements. These statements present the financial position of the cooperative's electric operations as of Dec. 31, 2015, and the results of its electric operations for the year under review, according to the information and explanation shown on the records of Alger Delta Cooperative Electric Association.

Complete, audited financial statements are maintained at the Gladstone office of Alger Delta Cooperative Electric Association. The independent audit of 2015 financial statements was unqualified, and completed by the certified public accountant (CPA) firm of Eide Bailley of Fargo, ND.

BBQ FAVORITES

These Great Recipes Make Summer Sizzle!



Shredded BBQ Beef

Esther Maginity, Thompsonville

- 1 lean boneless beef chuck roast (about 5 lb.)
- 3 T. cooking oil, divided
- 2 large onions, chopped
- 1 c. ketchup
- 1-2 small cans beef broth*
- $\frac{2}{3}$ c. chili sauce
- $\frac{1}{4}$ c. cider vinegar
- $\frac{1}{4}$ c. packed brown sugar
- 3 T. Worcestershire sauce
- 2 T. prepared mustard
- 2 T. molasses
- 2 T. lemon juice
- 1 t. salt
- $\frac{1}{8}$ t. pepper
- $\frac{1}{4}$ t. cayenne pepper
- 1 T. liquid smoke, optional
- 12-16 hamburger buns

In a Dutch oven, brown roast on all sides in 1 T. oil. Meanwhile, in a large saucepan, sauté onions in remaining oil until tender. Add remaining ingredients to the saucepan. Reduce heat and simmer, uncovered for 15 minutes, stirring occasionally. Pour sauce over roast. Cover and bake at 325° for 2 hours, turn roast and continue to bake 2 more hours until roast is very tender. Remove roast from oven, shred with fork and return to Dutch oven with sauce. **If too stiff, add more beef broth to the right consistency. If there is extra, just freeze in containers.*

Photos—831 Creative

Chicken BBQ

Cora Kuiper, Grand Rapids

- 3 $\frac{1}{2}$ c. cooked chicken, shredded
- 2 T. butter
- $\frac{1}{2}$ c. chopped onion
- $\frac{1}{2}$ c. chopped celery
- $\frac{1}{2}$ c. chopped green pepper
- 1 c. ketchup
- 1 c. chicken broth
- 3 T. vinegar
- 2 T. Worcestershire sauce
- 1 t. prepared mustard
- 2 T. brown sugar
- $\frac{1}{2}$ t. salt
- $\frac{1}{2}$ t. pepper

Cook onion, celery and green pepper in butter until tender. Add chicken and remaining ingredients. Simmer 20 minutes. Serve on buns.

BBQ Chicken Pizza

Mindy Aves, Charlotte

- 1 refrigerated pizza dough or your favorite dough mix
- ¼ c. Sweet Baby Ray's BBQ sauce
- ½ c. shredded, cooked chicken (leftovers work great)
- ¼ c. thinly sliced red onion
- ½ c. fresh sliced baby portobello mushrooms
- 1 c. mozzarella cheese
- 1 c. sharp cheddar cheese

Prepare crust according to package directions. Spread crust on a 12-inch pan and brush with olive oil. Add BBQ sauce, chicken, red onions and mushrooms, followed by cheese. Bake at 375° for about 14-18 minutes or until crust is golden brown and cheese is melted.



Gather Round The Co-op Kitchen Table

A **NEW** and **EXCLUSIVE** online cooking community for our electric co-op members.

Members can submit recipes online for a chance to win a \$50 electric bill credit; plus there's more! We will print the winning recipe in *Country Lines* with a photo of the dish and create an instructional "how to" video for micoopkitchen.com.

Ready to pull up a seat?

GREAT! Go to MICOOPKITCHEN.COM and register.

Please submit your favorite "World Cuisine" recipes by August 1 and "Casserole" recipes by Sept. 1.

Enter your recipe online at micoopkitchen.com or send to (handprint or type on one side, please): *Country Lines* Recipes, 201 Townsend St., Suite 900, Lansing, MI 48933. Please note the co-op from which you receive your electric service.

micoopkitchen.com





Annual Meeting Highlights

Over 600 Attend Annual Meeting. Members Support LIEAF. Board Elects Leaders.

More than 600 people attended Alger Delta's Annual Meeting on Saturday, June 18. The meeting featured a picnic-style cookout, games and activities for the whole family and many prize drawings. "The fun atmosphere helps draw the members in," said Tom Harrell, Alger Delta's CEO. Harrell praised the Alger Delta board and staff for their efforts in putting the whole event together. "Without our great team, this event could not have been done." "They're just great!" he said.



Dave Anthony

Paul Sederquist

Nancy Gardner-Platt

Members Support LIEAF. During the business portion of the annual meeting, members discussed the cooperatives' decision to participate in Michigan's Low Income Energy Assistance Fund (LIEAF). The LIEAF program is funded through a \$0.97 tax on electric meters and the money is used to help pay heating bills in the winter. Following the discussion, members overwhelmingly supported the board of directors decision to participate in the program.

The board elected Dave Anthony as President. Anthony represents District 5—Gourley/Cornell/LaBranche; is a former State Representative from the 108th district, a business owner and is employed by the Hannahville Potawatomi Indian Community.

Board Elects Leaders. Immediately following the Annual Meeting, the board met to elect new leadership.

The board also elected Paul Sederquist to the position of Vice President; and Nancy Gardner-Platt as Secretary/Treasurer. Sederquist is a retired farmer and has served on the Alger Delta board for 27 years. Gardner-Platt is a retiree with seven years' experience on the board. ■

Thank you Alger Delta Cooperative members for making our 2016 annual meeting a success! We appreciate you and your dedication to Alger Delta Cooperative.





art

WINS HEARTS OF THE PUBLIC

Twice

Artists are often seen as “rule breakers”—bumping up against the norm and defining new and different ways of both viewing and doing things. Few artists have been called “rule makers,” but that’s exactly what husband and wife duo, Steve and Ann Loveless, have become.

In 2013, Ann won the prestigious Public Vote Grand Prize at ArtPrize with her unique landscape quilt art piece “Sleeping Bear Dune Lakeshore.” Her unique collage and quilting technique dazzled visitors from around the globe with its 20-by-five-foot tall stature. The piece, inspired by her husband’s landscape photograph, put both Ann and northern Michigan on the map.

In 2015, Ann and Steve set out to create a piece together—melding Steve’s panoramic photography and Ann’s collage quilting techniques. The result? *Northwoods Awakening*—a huge quilt and photographic print hybrid that depicts a woodland panorama.



“Northwoods Awakening” earned the 2015 Public Vote Grand Prize at ArtPrize.



Ann's 2013, "Sleeping Bear Dune Lakeshore" quilt won the prestigious Public Vote Grand Prize at ArtPrize.

"Our creation begins as a traditional photographic print on the left," says Ann, "Then blends various fabrics and textiles to metamorphose into an entirely quilted textile on the right."

The two spent more than 1,100 hours on the piece, which assembles at an impressive 25 feet wide by 5 feet tall.

The ArtPrize crowds fell in love once more and awarded the couple the Public Vote Grand Prize—again.

Ann and Steve, whose art gallery is in downtown Beulah and who live near Crystal Lake in Benzie County—are never short on inspiration. Surrounded by water, woods and natural treasures like Sleeping Bear Dunes—there is always a new scene to capture.

"We've learned never to take our surroundings for granted," said Steve. "It's one thing to look at a scene, but another to actually see it."

While inspiration is plentiful, the artwork itself is quite technical. Steve's multi-row panoramic

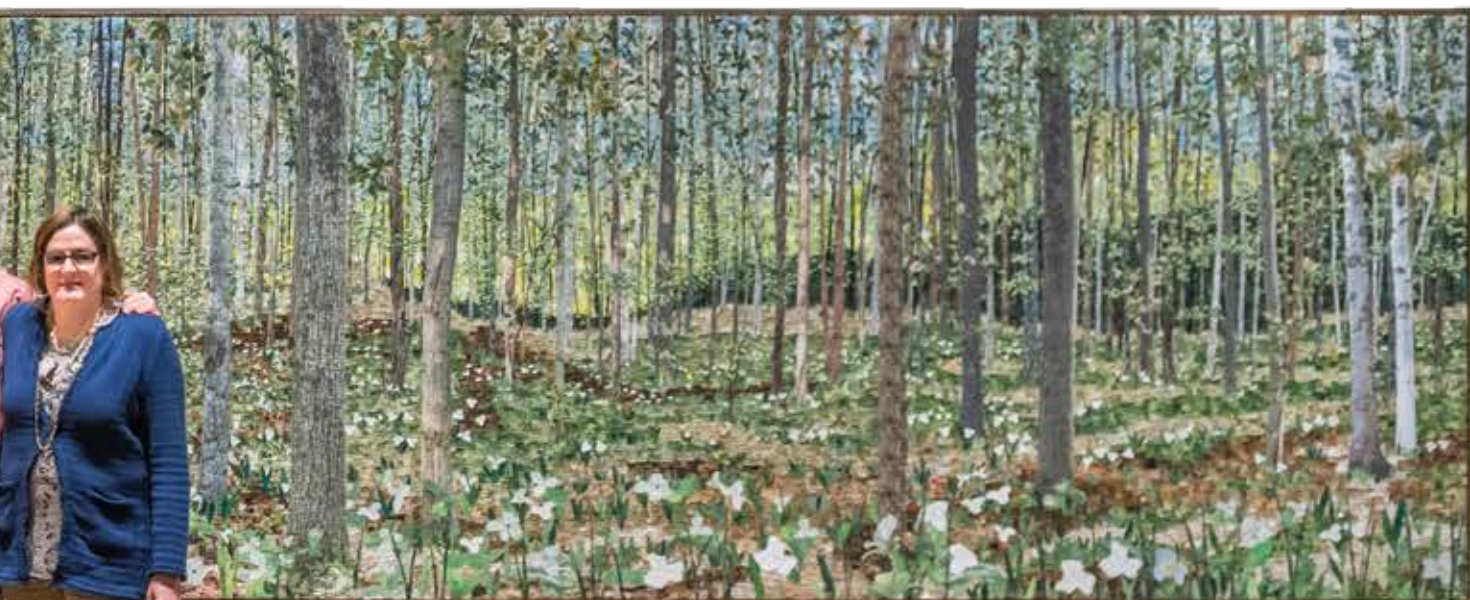
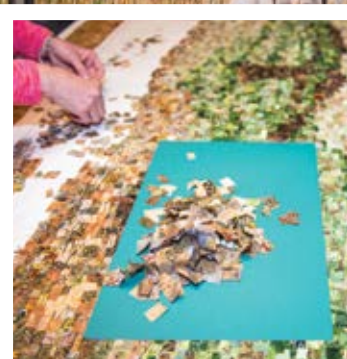
photography process can include capturing as many as 50-60 close-ups panning rows and columns.

They eventually combine to make one panoramic photograph. It's not dissimilar to the collage stitching that Ann does on the quilting end.

"The hardest part of working together isn't the long hours," said Ann. "It's trying to combine the idea that's in Steve's head with the idea that is in my head. Communicating your vision is the challenge."

The two certainly have overcome the communication challenge. So well, in fact, that ArtPrize has amended their rules—which no longer allows an artist to win the Grand Prize more than once, making Ann the only artist in ArtPrize history who will ever have won twice.

Just when you thought breaking the rules was pretty cool, it turns out that being responsible for the making of rules is the real artist's way. ■



Photos-courtesy of Steve Loveless

Chefs Celebrate Local Bounty at LES CHENEAUX SCHOOL

The springtime forests surrounding Michigan's Les Cheneaux Islands offer up rich carpets of leeks and morels. The sparkling waters of Lake Huron provide a steady supply of fresh, succulent fish. Locally-derived pork, beef, lamb and buffalo as well as poultry, eggs and handmade cheeses, are plentiful. In summer, local fields yield an abundance of healthy, organically grown vegetables and fruits. And the chefs-in-training at Les Cheneaux Culinary School are busily gathering this magical harvest and learning to create uniquely Michigan gourmet cuisine from this exquisite local bounty.

Located on the northern shore of Lake Huron, the 36 wooded Les Cheneaux Islands are often described as "shoreline gems," and the Les Cheneaux Culinary School may just be the newest jewel in the crown. Opened in September 2014, the school is located in the quaint 170-year-old village of Hessel and is housed in the former Hessel Bay Inn. The building has been meticulously renovated to reflect the iconic charm of the old boat houses dotting the channels that weave throughout the islands. The 5,000 square foot facility includes a state-of-the-art kitchen, a thoughtfully designed 55-seat rustic-modern dining room and a deck offering lovely views of the local marina and waterways. Also featured is a uniquely-designed indoor/outdoor bar where one can enjoy house specialties including a fresh rhubarb martini.

With a class size restricted to eight students, the school provides a year of hands-on experience in a real-time professional kitchen environment. "The small class size and the nature of the school allows the students to live, learn and share their love of and appreciation for fine food, while honing their cooking skills," according to Program Director and Executive Chef Zachary Schroeder. A St. Ignace area native, Schroeder states that, "Fresh and local is our main theme and the niche that separates us. We go out and work with farmers, teaching students how to best source from the farmers and utilize that food." He says that they can obtain a superior product at an affordable, sometimes slightly higher price than would a typical restaurant using large distributors of product from random sources. "The students will learn a different process than those taught using typical restaurant suppliers. The sky's the limit as far as the quality of fine food in



Student chefs Carrie Birkmeier and Katie Keller pictured with Rhubarb Frasier Cakes that they created.

the U.P. if I can teach them how relatively easy it can be to source this food locally."

Having spent most of their year-long course immersed in learning to source and prepare an elevated local cuisine, summer finds the chefs-in-training throwing open the doors of the school's charming dining room—inviting in the dining public along with the much-anticipated summer lake breezes. From mid-May to early September the students learn all aspects of restaurant management and service in a real-world environment while offering an utterly unique local dining experience.

Fine dining on locally harvested, organically-grown foods is a concept enjoying a worldwide resurgence. This makes increasing sense economically, environmentally and for reasons of health. While students emerging from the Les Cheneaux Culinary School are certainly equipped to carry their skills and experience in farm-to-table cuisine anywhere in the world, there is always the chance that—in an echo of the school's own credo—the local area will benefit, too. Pickford native and culinary school student Katie Keller, 21, isn't sure of her plans yet, but says, "I'm seriously giving thought to perhaps becoming a chef on a Great Lakes freighter." As with a restaurant menu, she has many options from which to choose.

For more information, including dining hours and dates, go to lculinary.org or call (906)484-4800. ■

Amazing Michigan! Photo Gallery



Submit Your Photos

Alger Delta invites members to share their amazing photos. Selected photos will be published in *Michigan Country Lines*.

Upcoming topics and deadlines are: **Sports/Outdoor Fun**, due **July 25** for the September issue and **Best Friends**, due **Aug. 25** for the October issue.

Details and instructions for photo submission—including rules, topic list, publication date, and submission deadlines—can be found at <http://bit.ly/countrylines>. We look forward to seeing your best photos!

Remember <http://bit.ly/countrylines> to submit photos!

1. A few of Michigan favorites. Lilac bushes in bloom on Garden Rd., leaves and acorns arranged in the fall and seagulls enjoying the spring sun on the fish house at the Garden Bay Motel. *Photo by Eva Maher*
2. Point Betsie Lighthouse in Frankfort. Established in 1858 it is still an active navigation aid today. In the Winter its landscape changes daily when ice formations add to the beauty of the picturesque Michigan icon. *Photo by Lori Gelinas*
3. Pictured Rocks in Munising in the fall! *Photo by Gaye Hott*
4. One of the many familiar and favorite views of those who travel through the Sleeping Bear Dunes National Lakeshore. *Photo by Dan Kuiper*

The Glamping Trend

By Jack O'Malley

glamping \glamp-in\ verb glamorous camping

If your idea of roughing it means finding the ice machine on another floor of your hotel, glamping might be for you!

Glamping or "glamorous camping" combines the intimacy of camping with the perks of a luxury hotel. Amenities can include everything from bath and laundry facilities to clubhouses and recreation halls. Accommodations will vary, but typically includes Airstreams and other trailers, barns, farmhouses, cabins, huts and teepees. You can even go glamping in a tree house!

Perfect for the vacationer who wants to enjoy nature without getting dirty, Michigan's first glamping eco-resort opened recently, with limited facilities, in Antrim County. Bella Solviva (Swedish for beautiful hope) covers more than 200 acres on the western edge of the Jordan River Valley, and will offer glamping grounds with restrooms, a fitness center, free firewood, and ice, as well as catered meals.

The owner, Brad Carlson, believes glamping will be a fun trend in the very traditional world of vacationing in Michigan. "Glamping will appeal to those who want to rejuvenate in nature but prefer doing so comfortably," said Carlson.

In the plans are several different-themed getaways. For the most adventurous traveler, Neverland Escapade offers hobbit huts and tree dwellings to stow-away yachts and authentic teepees. Vacationers who prefer a more nostalgic experience will enjoy Bella Solviva's Route 66, featuring vintage RVs and tent sites for the do-it-yourself glamper. Bella Solviva will even offer a replica of the M*A*S*H unit complete with swamp tents, a supply hut and mess tent for larger gatherings.



The eco-chic resort embraces environmental stewardship by finding the perfect balance between recreation and sustainability. Bella Solviva uses nontoxic cleaning agents, organic sheets and towels, bulk amenities and non-disposable dishes, on-site transportation with green vehicles and meals prepared with locally-grown food. Future plans include reliance on solar, wind and hydro power.



Jack O'Malley

They say seeing is believing and "Five billion stars beat a five-star hotel any day," Carlson says. ■

Visit bellasolviva.com for more information on availability.

I Remember...

We invite members to share their fondest memories.

Country Lines will pay \$50 for stories we publish.

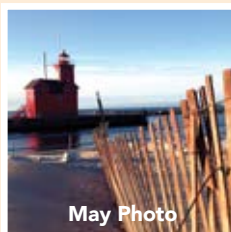
Guidelines

1. Approximately 200 words
2. Digital photos must be at least 600 KB
3. Only one entry per household, per month
4. Country Lines retains reprint rights
5. Please include your name, address, email, phone number and the name of your electric co-op
6. Submit your memories online: countrylines.com



«« Where In Michigan Is This?

Every co-op member who identifies the correct location of the photo at left by **August 18** will be entered into a drawing to win a \$50 bill credit from their electric co-op. We do not accept Mystery Photo guesses by phone. Enter your guess at countrylines.com or send by mail to: Country Lines Mystery Photo, 201 Townsend St., Suite 900, Lansing, MI 48933. Include the name on your account, address, phone number, and name of your co-op.



Our Mystery Photo Contest winner from the May 2016 issue is Arthur Kuznicki, a Presque Isle Electric & Gas Co-op member who correctly identified the photo as the Holland Harbor Light, more commonly known as Big Red, located at the channel connecting Lake Michigan and Lake Macatawa at Holland State Park.



FOR A LIMITED TIME

American Metal Roofs

IS OFFERING

\$7,500
in
FREE UPGRADES

Upgrade from Standing Seam to Designer Oxford or Rustic Shingle, plus, avoid future rust with a FREE UPGRADE to energy-efficient, non-rusting aluminum.

Call Today! 844.638.2576
844.METAL.ROOFS

VISIT OUR SHOWROOMS:

FLINT - 6140 Taylor Drive
CHARLOTTE - 1875 Lansing Road

Do-It-Yourself
and
Save 50%

Free Classes - Register Online

Visit our new website!

AmericanMetalRoofs.com

See dozens of pictures • Enter to win a Metal Roof • Request a Quote

DON'T GET CAUGHT WITHOUT POWER...

WHOLE HOUSE STANDBY

GENERATORS

- INSTALLATION INCLUDED
- FINANCING AVAILABLE!!!



I'M A CO-OP VOTER

Visit the Co-ops Vote website at VOTE.COOP, and take the pledge to BECOME A CO-OP VOTER. Plus, learn more about state and federal candidates before you cast your vote.

Mark your calendar—vote in the state primary election on August 2 and the general election on November 8.



A PROGRAM OF AMERICA'S ELECTRIC COOPERATIVES
WWW.VOTE.COOP

