

# MICHIGAN COUNTRY LINES

art  
WINS HEARTS OF THE PUBLIC  
*Twice*



Plus!

Next Generation Of Co-op Employees

Our Four-Legged Celebrity

Driving Goes Electric



**Act now to receive a  
30% Federal tax credit**

**7 Series**  
*Ultimate comfort  
and efficiency*



## Time is running out to take advantage of a 30% tax credit for geothermal

You may not realize it, but right beneath your feet is an almost unlimited reservoir of stored solar energy. A WaterFurnace geothermal system taps into this free and renewable resource to provide savings of up to 70% on heating, cooling and hot water—with a comfort you have to experience to believe. Right now you can save thousands on installation thanks to a 30% federal tax credit. But hurry, the credit is only available through the end of 2016. Contact your local WaterFurnace dealer today to learn more!

### YOUR LOCAL WATERFURNACE DEALERS

**Bad Axe**  
B & D Htg  
(989) 269-5280  
[bdheating.com](http://bdheating.com)

**Berrien Springs**  
WaterFurnace  
Michiana  
(269) 473-5667  
[gogreenmichgeothermal.com](http://gogreenmichgeothermal.com)

**Big Rapids**  
Stratz Htg & Clg, Inc.  
(231) 796-3717  
[stratzgeocomfort.com](http://stratzgeocomfort.com)

**Caro**  
AllTemp  
Comfort, Inc.  
(866) 844-HEAT (4328)  
[geo4less.com](http://geo4less.com)

**Carsonville**  
Certified Temperature  
Innovations  
(810) 300-7748

**Clifford**  
Orton Refrig & Htg  
(989) 761-7691  
[sandsuskygeothermal.com](http://sandsuskygeothermal.com)

**DeWitt**  
S & J Htg & Clg  
(517) 669-3705  
[geothermalservicesofmichigan.com](http://geothermalservicesofmichigan.com)

**Grand Rapids**  
Total Comfort  
Resource, LLC  
(616) 406-3182  
[totalcomfortresource.com](http://totalcomfortresource.com)

**Hart/Ludington**  
Adams Htg & Clg  
(231) 873-2665  
[adamsheatingcooling.com](http://adamsheatingcooling.com)

**Indian River**  
M & M Plmb & Htg  
(231) 238-7201  
[mm-plumbing.com](http://mm-plumbing.com)

**Jackson/Adrian**  
Comfort 1  
Htg & A/C  
(517) 764-1500  
[comfort1.net/geothermal](http://comfort1.net/geothermal)

**Kalkaska**  
Kalkaska Plmb & Htg  
(231) 258-3588  
[kalkaskageothermal.net](http://kalkaskageothermal.net)

**Mt Pleasant**  
Walton Htg & Clg  
(989) 774-1566  
[waltonheating.com](http://waltonheating.com)

**Muskegon**  
Adams Htg & Clg  
(231) 873-2665  
[adamsheatingcooling.com](http://adamsheatingcooling.com)

Kiessel Geothermal  
Htg & Clg  
(231) 747-7509  
[kiesselsgeo.com](http://kiesselsgeo.com)

**Portland**  
ESI Htg & Clg  
(517) 647-6906  
[esiheating.com](http://esiheating.com)

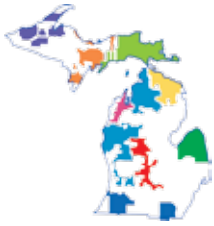
**Sunfield**  
Mark Woodman  
Plmb & Htg  
(517) 886-1138  
[mwphonline.com](http://mwphonline.com)

**Traverse City**  
Geofurnace Htg & Clg  
(231) 943-1000  
[watergeofurnace.com](http://watergeofurnace.com)  
D & W Mechanical  
(231) 941-1215  
[dwgeothermal.com](http://dwgeothermal.com)



[waterfurnace.com/Credit](http://waterfurnace.com/Credit)

WaterFurnace is a registered trademark of WaterFurnace International, Inc. ©2016 WaterFurnace International, Inc.



Michigan's Electric Cooperatives  
countrylines.com

**July/August 2016**  
**Vol. 36, No. 7**

Executive Editor  
**Casey Clark**

Editor  
**Christine Dorr**

Publisher  
**Michigan Electric  
Cooperative Association**

Design and Layout  
**Ciesa Design**

**Michigan Country Lines**, USPS-591-710, is published monthly, except August and December, with periodicals postage paid at Lansing, MI, and additional offices. It is the official publication of the Michigan Electric Cooperative Association, 201 Townsend St., Suite 900, Lansing, MI 48933.

**Subscriptions** are authorized for members of Alger Delta, Cherryland, Great Lakes, HomeWorks Tri-County, Midwest Energy, Ontonagon, Presque Isle, and Thumb electric cooperatives by their boards of directors.

**POSTMASTER:** SEND ALL UAA TO CFS.

Association officers are **Robert Kran**, Great Lakes Energy, chairman; **Mark Kappler**, HomeWorks Tri-County Electric, vice chairman; and **Eric Baker**, Wolverine Power Cooperative, secretary-treasurer. **Craig Borr** is president and CEO.

**CONTACT US/LETTERS TO EDITOR:**

Michigan Country Lines  
201 Townsend St., Suite 900  
Lansing, MI 48933  
248-534-7358  
cdorr@meca.coop  
countrylines.com



**Change of Address:**

Please notify your electric cooperative.  
See page 4 for contact information.

**The appearance of advertising does not constitute an endorsement of the products or services advertised.**

# IN THIS ISSUE

- 6 **OUR ENERGY**  
How To Prevent Carbon Monoxide Poisoning
- 10 **COOKING COMMUNITY**  
BBQ - A Michigan Summer Favorite  
*Christin McKamey & Our Readers*  
New! Join Our Online Cooking Community
- 14 **FEATURE**  
Art Wins Hearts Of The Public Twice  
*Emily Haines Lloyd*
- 18 **READERS' PAGE**  
The Glamping Trend  
*Jack O'Malley*  
Guess Our New Mystery Photo

## IN YOUR WORDS

Last month, we asked electric co-op members a question:

**If you could spend the day with any celebrity, who would it be?**

Thank you for all the responses. Here are some of your answers...

**"Shirley Jones. I fell in love with that woman when she played Marian the Librarian in The Music Man. That face, that voice."**

**"The NCIS crew, Definitely! I could hang out with Gibbs, and his crew in DC to see all the monuments; Pride, and his crew in New Orleans for some of that Cajun cookin' and Dixieland jazz; then Hettie and her crew in LA for some California dreaming."**

Our new Question of the Month is:

**Where can you get the best burger in Michigan?**

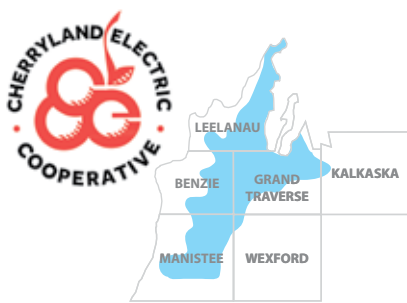
Please submit answers to [countrylines.com](http://countrylines.com) by September 1.

### ON THE COVER

Ann and Steve Loveless of Beulah, MI, stand in front of the winning panoramic landscape that they brought to life at the 2013 Michigan ArtPrize competition.

\*Some co-op editions have a different cover.

*Photo-Steve Loveless*



## Board Of Directors

### TERRY LAUTNER

President  
231-946-4623  
tlautner@cherrylandelectric.coop

### JON ZICKERT

Senior Vice President  
231-631-1337  
jzickert@cherrylandelectric.coop

### MELINDA LAUTNER

Secretary  
231-947-2509  
mlautner@cherrylandelectric.coop

### RICK DENEWETH

Treasurer  
231-929-4526  
rdeneweth@cherrylandelectric.coop

### BETTY MACIEJEWSKI

Director  
231-947-0463  
bmaciejewski@cherrylandelectric.coop

### JOHN OLSON

Director  
231-938-1228  
jolson@cherrylandelectric.coop

### TOM VAN PELT

Director  
231-386-5234  
tvanpelt@cherrylandelectric.coop

## GENERAL MANAGER

Tony Anderson

## CO-OP EDITORS

Rachel Johnson  
Rob Marsh

## OFFICE HOURS

Monday–Friday 7:30 a.m.– 4 p.m.

## TELEPHONE NUMBERS

231-486-9200 or 1-800-442-8616 (MI)

## ADDRESS

P.O. Box 298, Grawn, MI 49637

## WEBSITE

cherrylandelectric.coop

## PAY STATION

Cherryland Electric office  
5930 U.S. 31 South, Grawn MI, 49637

*Cherryland Electric Cooperative is an equal opportunity provider and employer.*



Your Touchstone Energy® Partner  
*The power of human connections*



Find us on Facebook.  
facebook.com/cherrylandelectriccoop

# Co-op News

## Cherryland And Wolverine Expand Operations

Cherryland and their power supplier Wolverine Power Supply Cooperative broke ground on two operations projects totaling 20,720 square feet in Grand Traverse County in April. Cherryland is expanding its shop capacity behind the main office while Wolverine builds a new service center in Grawn. Read more about both projects on Cherryland’s blog at [CherrylandElectric.coop/Blog](http://CherrylandElectric.coop/Blog).

## Students Represent Cherryland In Washington D.C.

Congratulations to Ian Berry of Traverse City Central High School and Madison Hertel of Traverse City West Senior High School for being selected and attending the Electric Cooperative Youth Tour in Washington D.C. this June. They joined hundreds of other high school students representing electric cooperatives from all over the country. The weeklong event featured tours of monuments and historical sites, meetings with elected officials and leadership training.

## Co-op Members Pledge To Vote In Elections

Two big election dates are coming soon. The Michigan primary election is Tuesday, August 2, and the Michigan general election is Tuesday, November 8. Learn more about the upcoming elections and how co-op members can take the pledge and make a difference at [Vote.coop](http://Vote.coop).

## August Brings The Northwestern Michigan Fair

Join the weeklong fun at the Northwestern Michigan Fair August 6-13 at the Northwestern Michigan Fairgrounds. Cherryland is proud to sponsor Kids’ Day and the Pancake Breakfast. For more information about the fair, visit [NorthwesternMichiganFair.net](http://NorthwesternMichiganFair.net).

## Members Earn Rebates With Energy Efficient Upgrades

Cherryland members are eligible to receive rebates for energy efficient upgrades in their homes or businesses. Common upgrades include replacing incandescent bulbs with LED bulbs and purchasing Energy Star qualified appliances. For a guide to our residential rebate program and a complete listing of rebates available on Energy Star qualified appliances, visit our website at [CherrylandElectric.coop](http://CherrylandElectric.coop).

## Cherryland Office Closed On Labor Day

The Cherryland office will be closed Monday, September 5, in observance of Labor Day. Enjoy your last long weekend of summer.

## Cherryland Cares Grant Applications Due In September

Area nonprofit agencies seeking financial help can apply for a grant through Cherryland Cares. The deadline for third quarter applications is Friday, September 9. The next quarterly meeting of Cherryland Cares is Monday, September 19. If you are an area nonprofit agency seeking financial help, please call Shannon Mattson at 231-486-9234 or e-mail [smattson@cherrylandelectric.coop](mailto:smattson@cherrylandelectric.coop). ■



## Reloading For The Future



**Tony Anderson**  
General Manager

**A**t a recent employee meeting, I stood in front of your cooperative employees and thought, “Wow—we are bringing in a lot of new faces.” We typically have around 53 full-time employees working at Cherryland Electric Cooperative. Due to retirements, new assignments, a few departures and some reorganization, the names and faces have changed dramatically over the last couple of years—if not the last couple of months.

Like many businesses across the country, our offices, line trucks and shops have been dominated by baby boomers who are stepping away from the workforce. This has caused us to “reload” our employee base. In the past, this was done rather easily. Over the last 12-18 months however, it has become much harder as the competition for workers has gone up and the number of qualified candidates in our local area has gone down.

In just over three years, we have added 15 new employees. All areas of the cooperative have been affected—operations, administration, locating, member services, metering and engineering. In this group of 15, 11 new employees have been added in the last 16 months. More than half of those 11 employees have joined Cherryland in the last eight months.

In some cases, we have added employees to increase our depth to handle the demands of a growing economy. In other cases, we have added new faces to prepare for future retirements. Obviously, we have some critical systems to keep up and going in order to provide the service all of our

members deserve. This requires a keen eye on the future and good communication with current employees.

As we watch great employees depart, we also know it offers an opportunity for the organization to grow and improve. Each new hire is scrutinized and strategized as to their talents and what they can bring to the table that will make us a better organization.

In some cases, we are hiring “green” talent, knowing full well that we will have to train them. In a few cases, we have been fortunate to acquire some experience, but not without some time spent “selling” them on our business model and culture. We have definitely seen a market shift in favor of the job seeker.

As I write this, we are actively searching for an accounting employee to take the place of one seeking retirement, as well as a new mechanic to absorb the knowledge that has kept our fleet rolling. So, the transition to our new generation is not over and likely won’t be for some years to come.

What is the result of all these changing faces? I am happy to report that our members are in the hands of new employees eager to serve and even happier to report we are also in well-qualified hands. Your HR department has done a great job of reloading your workforce with potential, intelligence, talent and positive attitudes.

While there will be more change and more hiring in the years to come, I believe we have a great new foundation that will grow into the next generation of cooperative employees dedicated to upholding the quality of service all members deserve. ■

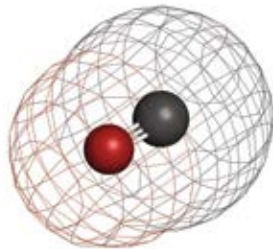


# Prevent Carbon Monoxide Poisoning

**Y**ou can't see, taste or smell carbon monoxide, but it can be deadly. Carbon monoxide, or CO, is a gas that is found whenever fuel is burned. Known as the "silent killer," CO causes an average of 430 deaths per year and more than 20,000 hospital emergency room visits according to the Centers for Disease Control and Prevention (CDC).

## Where does carbon monoxide come from?

CO is in fumes produced by items that burn fuel, including kerosene, propane, and gas space heaters, improperly working furnaces, gas water heaters and dryers, wood stoves and fireplaces. Car, truck and boat exhaust fumes contain CO as do fumes from fuel-powered generators and power washers.



## How can carbon monoxide poisoning affect your health?

CO is dangerous because it blocks your body from absorbing the oxygen it needs. CO poisoning can occur suddenly or happen over a long period of time. Symptoms depend on the amount of CO a person is exposed to, the length of time exposed, and the general health and age of the person. Mild symptoms

may seem like the flu and include: mild headache and weakness, dizziness, sleepiness, shortness of breath, tightness in the chest, nausea and/or vomiting. High levels of CO or lower levels of CO exposure that last a long time can cause confusion, loss of muscle control, blurred vision, extreme headache, weakness, fainting, convulsions and even death.

## Who is most at risk of harm to their health?

Anyone can be at risk for carbon monoxide poisoning. However, those most at risk are:

- infants,
- the elderly, and
- people with heart disease, lung disease, or anemia.

## What should you do if you have symptoms of carbon monoxide poisoning?

- Go outside and get fresh air immediately!
- Call 911 and tell them you think you have carbon monoxide poisoning, or go to the emergency room if you are able to get there without help.

A simple blood test done at the hospital can usually detect carbon monoxide poisoning. Medical treatment is available. ■

# What can you do to prevent carbon monoxide poisoning?

- **DO** purchase and install carbon monoxide detectors that meet Underwriters Laboratories (UL) standard 2034-95. Follow the manufacturer's instructions for proper placement, use and maintenance. If the detectors plug into the wall, be sure they have a battery backup.
- **DO** leave the house if the alarm sounds on your CO detector. Go to a hospital emergency room or call 911 if anyone is feeling sick. If no one is sick, call the emergency number for your heating service or 911. Stay out of the home until your heating service or fire department says it's okay to go in.
- **DO** have a heating professional inspect, clean, and adjust your fireplace, wood stove, gas appliances including furnaces and water heaters, and chimneys/vents every fall—before the start of home heating season.
- **DO** purchase gas appliances that vent their fumes to the outside. Have them installed by a heating professional.
- **DO** read and follow all of the instructions for any fuel-burning devices.
- **DO** make sure that your car, truck, or boat has a working, airtight exhaust system. Repair exhaust leaks immediately.
- **DO** pay attention to symptoms (headache, dizziness, tiredness and/or a sick feeling in your stomach), especially if more than one person is feeling sick or if people and pets are feeling sick.



- **DON'T** operate fuel-powered machines such as generators, power washers, or mowers in buildings or semi-enclosed spaces.
- **DON'T** cook or heat with a grill indoors, even if you put it inside a fireplace.
- **DON'T** run vehicles in the garage, even if the door is open. Carbon monoxide can build up quickly and enter your vehicle and home.



- **DON'T** sit in a parked vehicle with the engine running for a long period of time, especially if your car is in snow.
- **DON'T** use gas stoves or ovens to heat your home.
- **DON'T** use an un-vented gas or kerosene space heater indoors.
- **DON'T** close the damper to the fireplace unless the fire is completely out and the coals are cold.
- **DON'T** ride in covered pickup truck beds or campers. Air moving around the vehicle can draw exhaust in.
- **DON'T** swim or play near the back of a boat where the motor gives off exhaust.
- **DON'T** ignore symptoms! You could die within minutes if you do nothing.

For more information, contact the Michigan Department of Health and Human Services by calling **1-800-648-6942** or visit **[michigan.gov/carbonmonoxide](https://michigan.gov/carbonmonoxide)**.

# Around The World To Northern Michigan

New to Cherryland's engineering department, Chris Vermeulen brings an international perspective to his work. Born in South Africa, Chris received his college degree in New Zealand before moving to the United States and later settling down in Michigan. We sat down with Chris recently to ask him about how he made his way to Cherryland Electric Cooperative.

**Q: Please tell us about your background—where you grew up and how you eventually got to the Traverse City area.**

*A: I was born in South Africa, raised there for 10 years and then immigrated to New Zealand in 1999. After completing my engineering degree, I took a 'gap' year to travel the world and get a better perspective.*

*In the summer of 2012, I ended up working on a dude ranch named Sundance Trail in Colorado, where I met my lovely wife. After working on the ranch, she came with me to South Africa where I had already acquired an engineering position.*

*After two years, we moved to Traverse City, where we got married in December, 2014.*

*I have a deep love for sports going back to before I could walk (I was kicking a ball around literally before I could walk). Growing up, I did athletics (track and cross country) and played hockey nonstop for more than 15 years. I am quite a relaxed, easy going person but always keen for a challenge.*

**Q: Tell us about your education.**

*A: I pursued a bachelor's degree in Electrical and Electronic Engineering at the University of Auckland, New Zealand, and graduated with honors in 2011.*



Chris meets an elephant on his visit to Victoria Falls National Park in Zimbabwe.



Chris Vermeulen and his wife, Marian, atop Longs Peak in Colorado.

**Q: How about your hobbies? What do you like to do when you're not working?**

*A: I love the outdoors, so anything outdoors: hiking, camping, target shooting/hunting, white water kayaking, rock climbing... I like anything sports wise, especially if it involves a ball of any shape or size. I also enjoy building model-sized remote controlled aircraft where I can use my 3D printer and utilize my degree.*

**Q: How did you get interested in engineering? Did it come naturally?**

*A: I was always asking 'why?' and after having something explained to me, I followed up with 'but what if?' So engineering really did come naturally.*

**Q: What is your role here at Cherryland?**

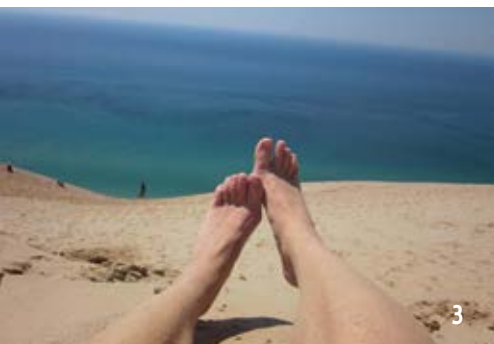
*A: In a nutshell, my role is to assist with SCADA (Supervisory Control And Data Acquisition) operations, helping to update the existing network by conducting phase balancing studies, reviewing protection schemes and so forth. All of the above roles ultimately result in reduced power outages and the lowering of operational costs for the members of Cherryland Electric Cooperative.*

**Q: What's it like working for a cooperative?**

*A: I really do enjoy the close working relationship that everyone has here at Cherryland. It's like being in one big, happy family where everyone is member focused. Having been employed at Cherryland for less than a year, I can honestly say that I already feel part of the family, and that I am privileged to be a part of such an awesome group of people. ■*



# Amazing Michigan! Photo Contest Winners



The votes are in, and we're happy to share the winning photo (and some great runners-up) from our photo contest. Thanks to everyone who submitted a photo, voted and spread the word by sharing the post on Facebook.

- 1. Winner!** "Perfect Lake Michigan Beach Day."  
*By Carrie Noren*
- 2.** "Our favorite place in Michigan! Seul Choix Pointe Lighthouse, Gulliver, Michigan."  
*By Julie Umlor*
- 3.** "Sandy Feet."  
*By Stephanie Weemhoff*
- 4.** "Empire Beach, Lake Michigan."  
*By Dale Mikses*
- 5.** "Good Harbor Bay."  
*By Debra Stephens*

## Enter Your Photos and Win!

Every month we will be announcing a new theme; all you have to do is submit your best shot and encourage your friends to vote! The photo receiving the most votes on our Facebook contest will be printed in an upcoming issue of *Country Lines* along with some of our other favorites. If your photo is printed in *Country Lines* during 2016 you will be entered to win a credit of up to \$200 on your December, 2016, bill.

Our July theme is **Sports/Outdoor Fun**. Photos can be submitted from **July 1 to July 20** to be featured in our September issue. The August theme is **Best Friends**. Photos can be submitted from **Aug. 1 to Aug. 20** for the October issue.

Ready to submit? Just visit [facebook.com/cherrylandelectriccoop](https://facebook.com/cherrylandelectriccoop) and click "Photo Contest" from the menu tabs. If you're not on Facebook, don't worry. You can also enter the contest at [cherrylandelectric.coop/photo-contest](https://cherrylandelectric.coop/photo-contest).

Make sure to vote, and encourage others to vote for you, too!

# BBQ FAVORITES

These Great Recipes Make Summer Sizzle!



## Shredded BBQ Beef

Esther Maginity, Thompsonville

- 1 lean boneless beef chuck roast (about 5 lb.)
- 3 T. cooking oil, divided
- 2 large onions, chopped
- 1 c. ketchup
- 1-2 small cans beef broth\*
- $\frac{2}{3}$  c. chili sauce
- $\frac{1}{4}$  c. cider vinegar
- $\frac{1}{4}$  c. packed brown sugar
- 3 T. Worcestershire sauce
- 2 T. prepared mustard
- 2 T. molasses
- 2 T. lemon juice
- 1 t. salt
- $\frac{1}{8}$  t. pepper
- $\frac{1}{4}$  t. cayenne pepper
- 1 T. liquid smoke, optional
- 12-16 hamburger buns

In a Dutch oven, brown roast on all sides in 1 T. oil. Meanwhile, in a large saucepan, sauté onions in remaining oil until tender. Add remaining ingredients to the saucepan. Reduce heat and simmer, uncovered for 15 minutes, stirring occasionally. Pour sauce over roast. Cover and bake at 325° for 2 hours, turn roast and continue to bake 2 more hours until roast is very tender. Remove roast from oven, shred with fork and return to Dutch oven with sauce. *\*If too stiff, add more beef broth to the right consistency. If there is extra, just freeze in containers.*

Photos—831 Creative

## Chicken BBQ

Cora Kuiper, Grand Rapids

- 3  $\frac{1}{2}$  c. cooked chicken, shredded
- 2 T. butter
- $\frac{1}{2}$  c. chopped onion
- $\frac{1}{2}$  c. chopped celery
- $\frac{1}{2}$  c. chopped green pepper
- 1 c. ketchup
- 1 c. chicken broth
- 3 T. vinegar
- 2 T. Worcestershire sauce
- 1 t. prepared mustard
- 2 T. brown sugar
- $\frac{1}{2}$  t. salt
- $\frac{1}{2}$  t. pepper

Cook onion, celery and green pepper in butter until tender. Add chicken and remaining ingredients. Simmer 20 minutes. Serve on buns.

## BBQ Chicken Pizza

Mindy Aves, Charlotte

- 1 refrigerated pizza dough or your favorite dough mix
- ¼ c. Sweet Baby Ray's BBQ sauce
- ½ c. shredded, cooked chicken (leftovers work great)
- ¼ c. thinly sliced red onion
- ½ c. fresh sliced baby portobello mushrooms
- 1 c. mozzarella cheese
- 1 c. sharp cheddar cheese

Prepare crust according to package directions. Spread crust on a 12-inch pan and brush with olive oil. Add BBQ sauce, chicken, red onions and mushrooms, followed by cheese. Bake at 375° for about 14-18 minutes or until crust is golden brown and cheese is melted.



# Gather Round The Co-op Kitchen Table

A **NEW** and **EXCLUSIVE** online cooking community for our electric co-op members.

Members can submit recipes online for a chance to win a \$50 electric bill credit; plus there's more! We will print the winning recipe in *Country Lines* with a photo of the dish and create an instructional "how to" video for [micoopkitchen.com](http://micoopkitchen.com).

Ready to pull up a seat?

**GREAT!** Go to [MICOOPKITCHEN.COM](http://MICOOPKITCHEN.COM) and register.

Please submit your favorite "World Cuisine" recipes by August 1 and "Casserole" recipes by Sept. 1.

Enter your recipe online at [micoopkitchen.com](http://micoopkitchen.com) or send to (handprint or type on one side, please): *Country Lines* Recipes, 201 Townsend St., Suite 900, Lansing, MI 48933. Please note the co-op from which you receive your electric service.

[micoopkitchen.com](http://micoopkitchen.com)



# Local Pup Becomes World Sensation

By Rob Marsh

The people of northern Michigan have an internationally-recognized celebrity in their midst. He lives and works in Traverse City. He has been seen on television, heard about over the radio, and watched countless times on the internet.

Here are some statistics that illustrate this celeb's status:

- **More than 11,000 Facebook page likes**
- **More than 24,000 Instagram followers**
- **More than 200,000 combined YouTube video views**
- **Featured on ABC News, FOX News, NBC News, CNN, Inside Edition, and more**
- **Personalized website, [airportk9.org](http://airportk9.org), with a web store, including hats, patches, and decals**

He is neither an actor nor a musician, an athlete nor a politician. Quite simply, he is a dog.





Piper is all smiles on the job.

K-9 Piper is an eight-year-old border collie, who works at the Cherry Capital Airport in Traverse City. Piper is a wildlife control K-9. His purpose is to increase safety at airports by responding directly to reports of wildlife and conducting regular patrols. In other words, he is responsible for chasing away any animal life that may inhibit the safe take-off and landing of aircraft.

Piper's owner and handler, Brian Edwards, has been airport supervisor at Cherry Capital Airport since 2008. He came into ownership of Piper in 2012. Recognizing the dog's natural abilities for airport work early, Edwards trained Piper to become the working dog that we see today.

The story of Edwards and Piper first came into the public eye in April 2015. A writer from MLive put together an article about the extraordinary airport employee after the United States Coast Guard air station in Traverse City posted a picture of Piper on their Facebook page.

That got the ball rolling. The story was picked up by various news outlets across the country. And it didn't stop there. Piper's story caught a second wind in late February 2016 after a training video posted by Edwards went viral on the popular website Reddit.



After the training video, the floodgates were opened. "The first few weeks after he went viral were crazy," says Edwards. "Neither of us got much sleep between work and all the interviews." Stories about Piper stretched across the world, including Australia, New Zealand, Japan, Columbia, England, South Africa, and many other places.

Despite the nonstop attention, the famous duo hasn't shied away from their local fans. "We get messages almost daily from people asking if they can meet him," Edwards explains. "Our door is open; we love it when people stop by."

The celebrity status achieved by Piper begs the question: what makes him so popular? He is not the only cute pooch out there who wears a fancy outfit and does extraordinary things. What makes him different?

Edwards believes it's a combination of a lot of things, "He's obviously cute, he's got a personality, he does a unique thing," reflects Edwards. "He's a bad ass."



Piper "salutes" the airmen before take-off.

According to Edwards, Piper is hardworking. He doesn't complain. He chases (literally) his desires without fear or hesitation. He possesses loyalty and unconditional love for the person who cares for him.

Piper takes all the positive attributes seen in others and puts it into a small, furry package (with a fancy outfit).

With this in mind, it is easy to see why Piper has captured the world's attention. Northern Michigan is privileged to have him in their own backyard. He is their extraordinary dog. ■

Photos courtesy of [airportk9.org](http://airportk9.org)



# art

## WINS HEARTS OF THE PUBLIC

### *Twice*

**A**rtists are often seen as “rule breakers”—bumping up against the norm and defining new and different ways of both viewing and doing things. Few artists have been called “rule makers,” but that’s exactly what husband and wife duo, Steve and Ann Loveless, have become.

In 2013, Ann won the prestigious Public Vote Grand Prize at ArtPrize with her unique landscape quilt art piece “Sleeping Bear Dune Lakeshore.” Her unique collage and quilting technique dazzled visitors from around the globe with its 20-by-five-foot tall stature. The piece, inspired by her husband’s landscape photograph, put both Ann and northern Michigan on the map.

In 2015, Ann and Steve set out to create a piece together—melding Steve’s panoramic photography and Ann’s collage quilting techniques. The result? *Northwoods Awakening*—a huge quilt and photographic print hybrid that depicts a woodland panorama.



“Northwoods Awakening” earned the 2015 Public Vote Grand Prize at ArtPrize.



Ann's 2013, "Sleeping Bear Dune Lakeshore" quilt won the prestigious Public Vote Grand Prize at ArtPrize.

"Our creation begins as a traditional photographic print on the left," says Ann, "Then blends various fabrics and textiles to metamorphose into an entirely quilted textile on the right."

The two spent more than 1,100 hours on the piece, which assembles at an impressive 25 feet wide by 5 feet tall.

The ArtPrize crowds fell in love once more and awarded the couple the Public Vote Grand Prize—again.

Ann and Steve, whose art gallery is in downtown Beulah and who live near Crystal Lake in Benzie County—are never short on inspiration. Surrounded by water, woods and natural treasures like Sleeping Bear Dunes—there is always a new scene to capture.

"We've learned never to take our surroundings for granted," said Steve. "It's one thing to look at a scene, but another to actually see it."

While inspiration is plentiful, the artwork itself is quite technical. Steve's multi-row panoramic

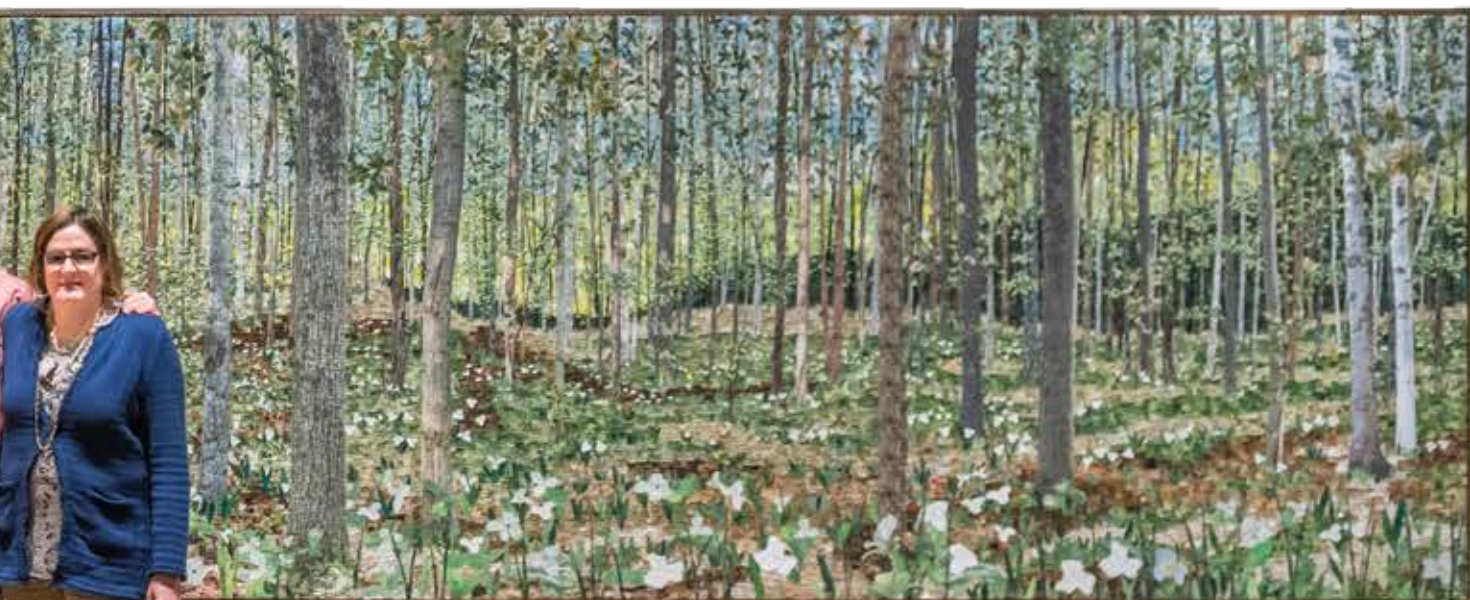
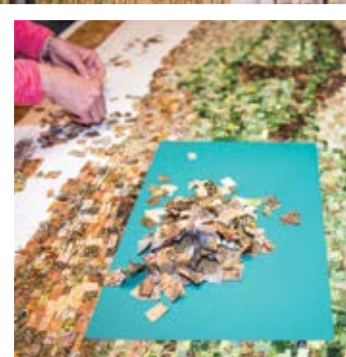
photography process can include capturing as many as 50-60 close-ups panning rows and columns.

They eventually combine to make one panoramic photograph. It's not dissimilar to the collage stitching that Ann does on the quilting end.

"The hardest part of working together isn't the long hours," said Ann. "It's trying to combine the idea that's in Steve's head with the idea that is in my head. Communicating your vision is the challenge."

The two certainly have overcome the communication challenge. So well, in fact, that ArtPrize has amended their rules—which no longer allows an artist to win the Grand Prize more than once, making Ann the only artist in ArtPrize history who will ever have won twice.

Just when you thought breaking the rules was pretty cool, it turns out that being responsible for the making of rules is the real artist's way. ■



Photos-courtesy of Steve Loveless

# My Year With A Chevy Volt

By Rachel Johnson

Over a year ago, we decided to dip our toes into the electric vehicle (EV) water here at Cherryland. Rather than jump into the deep end with an all-electric vehicle, we leased a plug-in hybrid, the Chevrolet Volt.

The Volt has a range of about 30 miles before it shifts into the traditional gas-powered mode. For getting around town, that's perfect. And, for out-of-town trips, we don't have to worry about the availability of charging stations.

After a year of driving an EV, here are the things I've noticed so far:

- It's quiet—Like, sneak up on people in the parking lot quiet. As a driver, it's great traveling in such a quiet vehicle. But, it does require a little more diligence because pedestrians don't hear you coming.
- It's a conversation piece. When you drive an EV, people want to talk to you about it. Personally, I find it fun. But if talking to strangers makes you uncomfortable, you may not want to be an EV early adopter.
- It's zippy. Seriously, that all-electric acceleration has some pep in its step.
- It's good for the environment—especially for Cherryland members who will soon get 30 percent of their electricity from renewables. It's basically like driving a wind-powered car 30 percent of the time.



Here at Cherryland, we love our little EV. And, after driving one for a while, I will definitely consider EVs when I purchase my next vehicle. Maybe I'll even leap into the deep end and go all-electric. ■

## Considering An Electric Vehicle?

You're going to need a charging station at home. We recommend a Level 2 Charger. You will need a dedicated circuit installed by a licensed electrician. Once you're all set up, you can expect to use an additional 3,000 – 4,000 kWh of electricity annually. If you're ready to make the leap, we can help out with a rebate. Contact Cherryland for details.

## We'll Pay You \$250 To Charge Your Electric Vehicle!



If you install a new **Level 2 Charger**, we'll give you a \$250 rebate.

Qualifying members must agree to charge their Electric Vehicle during off peak electric usage hours between 11pm - 7am.

Contact Tammy Squires for details:

tsquires@cherrylandelectric.coop  
231.486.9261

Rebates are limited. Certain restrictions and exclusions apply.



# Local Students Represent Co-op At 2016 Youth Leadership Events

The future of electric cooperatives lies with the youth, and members couldn't be in better hands. High school students from across Michigan represented their electric cooperatives at the 2016 Youth Leadership Summit (YLS) at SpringHill Camps in Evert, MI. The three-day summit was an opportunity for students to learn more about leadership, civic engagement and the cooperative difference in a fun-filled environment.

Cherryland sent four local high school students to YLS to represent their co-op: Ian Berry and Matthew Palmer of Traverse City Central High School and Madison Hertel and Elliott Sitkins of Traverse City West Senior High School.

Of the YLS attendees, Madison Hertel and Ian Berry were selected to represent Cherryland on the Electric Cooperative Youth Tour in Washington, D.C. this June. They were joined by 1,500 students from all over America in a weeklong trip touring the nation's capital and meeting government officials. "It was such a great experience! I made so many new friends and enjoyed learning about the electric co-ops," Hertel said. "Knowing more about energy makes



(Left to right) Elliott Sitkins, Madison Hertel, Matthew Palmer, and Ian Berry

me a better community member because I can share the information with my peers." ■

*Learn more at [miyls.com](http://miyls.com) about YLS and the Youth Tour in Washington, D.C.*

## What's New At The Art Park?

Summer has arrived and there is no better time to visit the Michigan Legacy Art Park. In partnership with Cherryland member Crystal Mountain, the Art Park is an outdoor art and event space located on a 30-acre preserve in Benzie County.



Art Park piece "Wheels of Progress" by Dewey Blocksma was replaced after it suffered damage from a falling tree last summer.

The Art Park welcomes seven new sculptures this year. They were installed at the entrance to the park and will be on loan from various artists for two years.

The Art Park will host three artists in residence this summer. Nancy McKay will be presenting interpretive programs for visitors of all ages. John DeHoog and Brian Nelson, art professors at Eastern Michigan University, will be creating a new piece of art during their residence.

Music lovers will enjoy the return of the Summer Sounds outdoor concert series. With the help of Art Park sponsors, the series has been expanded to seven shows from July 1 to August 13. ■

*Learn more about the park at [MichiganLegacyArtPark.org](http://MichiganLegacyArtPark.org).*

# The Glamping Trend

By Jack O'Malley

**glamping** \glamp-in\ *verb* glamorous camping

If your idea of roughing it means finding the ice machine on another floor of your hotel, glamping might be for you!

Glamping or "glamorous camping" combines the intimacy of camping with the perks of a luxury hotel. Amenities can include everything from bath and laundry facilities to clubhouses and recreation halls. Accommodations will vary, but typically includes Airstreams and other trailers, barns, farmhouses, cabins, huts and teepees. You can even go glamping in a tree house!

Perfect for the vacationer who wants to enjoy nature without getting dirty, Michigan's first glamping eco-resort opened recently, with limited facilities, in Antrim County. Bella Solviva (Swedish for beautiful hope) covers more than 200 acres on the western edge of the Jordan River Valley, and will offer glamping grounds with restrooms, a fitness center, free firewood, and ice, as well as catered meals.

The owner, Brad Carlson, believes glamping will be a fun trend in the very traditional world of vacationing in Michigan. "Glamping will appeal to those who want to rejuvenate in nature but prefer doing so comfortably," said Carlson.

In the plans are several different-themed getaways. For the most adventurous traveler, Neverland Escapade offers hobbit huts and tree dwellings to stow-away yachts and authentic teepees. Vacationers who prefer a more nostalgic experience will enjoy Bella Solviva's Route 66, featuring vintage RVs and tent sites for the do-it-yourself glamper. Bella Solviva will even offer a replica of the M\*A\*S\*H unit complete with swamp tents, a supply hut and mess tent for larger gatherings.



The eco-chic resort embraces environmental stewardship by finding the perfect balance between recreation and sustainability. Bella Solviva uses nontoxic cleaning agents, organic sheets and towels, bulk amenities and non-disposable dishes, on-site transportation with green vehicles and meals prepared with locally-grown food. Future plans include reliance on solar, wind and hydro power.



Jack O'Malley

They say seeing is believing and "Five billion stars beat a five-star hotel any day," Carlson says. ■

Visit [bellasolviva.com](http://bellasolviva.com) for more information on availability.

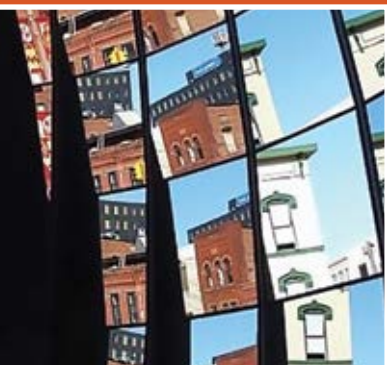
## I Remember...

We invite members to share their fondest memories.

Country Lines will pay \$50 for stories we publish.

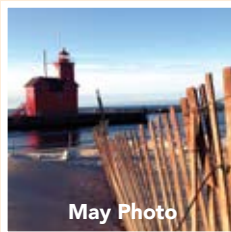
### Guidelines

1. Approximately 200 words
2. Digital photos must be at least 600 KB
3. Only one entry per household, per month
4. Country Lines retains reprint rights
5. Please include your name, address, email, phone number and the name of your electric co-op
6. Submit your memories online: [countrylines.com](http://countrylines.com)



## «« Where In Michigan Is This?

Every co-op member who identifies the correct location of the photo at left by **August 18** will be entered into a drawing to win a \$50 bill credit from their electric co-op. We do not accept Mystery Photo guesses by phone. Enter your guess at [countrylines.com](http://countrylines.com) or send by mail to: Country Lines Mystery Photo, 201 Townsend St., Suite 900, Lansing, MI 48933. Include the name on your account, address, phone number, and name of your co-op.



Our Mystery Photo Contest winner from the May 2016 issue is Arthur Kuznicki, a Presque Isle Electric & Gas Co-op member who correctly identified the photo as the Holland Harbor Light, more commonly known as Big Red, located at the channel connecting Lake Michigan and Lake Macatawa at Holland State Park.



**FOR A LIMITED TIME**

# American Metal Roofs

**IS OFFERING**

**\$7,500**  
in  
**FREE UPGRADES**

*Upgrade from Standing Seam to Designer Oxford or Rustic Shingle, plus, avoid future rust with a FREE UPGRADE to energy-efficient, non-rusting aluminum.*

**Call Today!** 844.638.2576  
**844.METAL.ROOFS**

**VISIT OUR SHOWROOMS:**

FLINT - 6140 Taylor Drive  
CHARLOTTE - 1875 Lansing Road

**Do-It-Yourself**  
and  
**Save 50%**

Free Classes - Register Online

*Visit our new website!*

**AmericanMetalRoofs.com**

See dozens of pictures • Enter to win a Metal Roof • Request a Quote

**DON'T GET CAUGHT WITHOUT POWER...**

**WHOLE HOUSE STANDBY**

# GENERATORS

- INSTALLATION INCLUDED
- FINANCING AVAILABLE!!!





[cherrylandelectric.coop](http://cherrylandelectric.coop)

# I'M A CO-OP VOTER

Visit the Co-ops Vote website at [VOTE.COOP](http://VOTE.COOP), and take the pledge to BECOME A CO-OP VOTER. Plus, learn more about state and federal candidates before you cast your vote.

Mark your calendar—vote in the state primary election on August 2 and the general election on November 8.



A PROGRAM OF AMERICA'S ELECTRIC COOPERATIVES  
[WWW.VOTE.COOP](http://WWW.VOTE.COOP)

