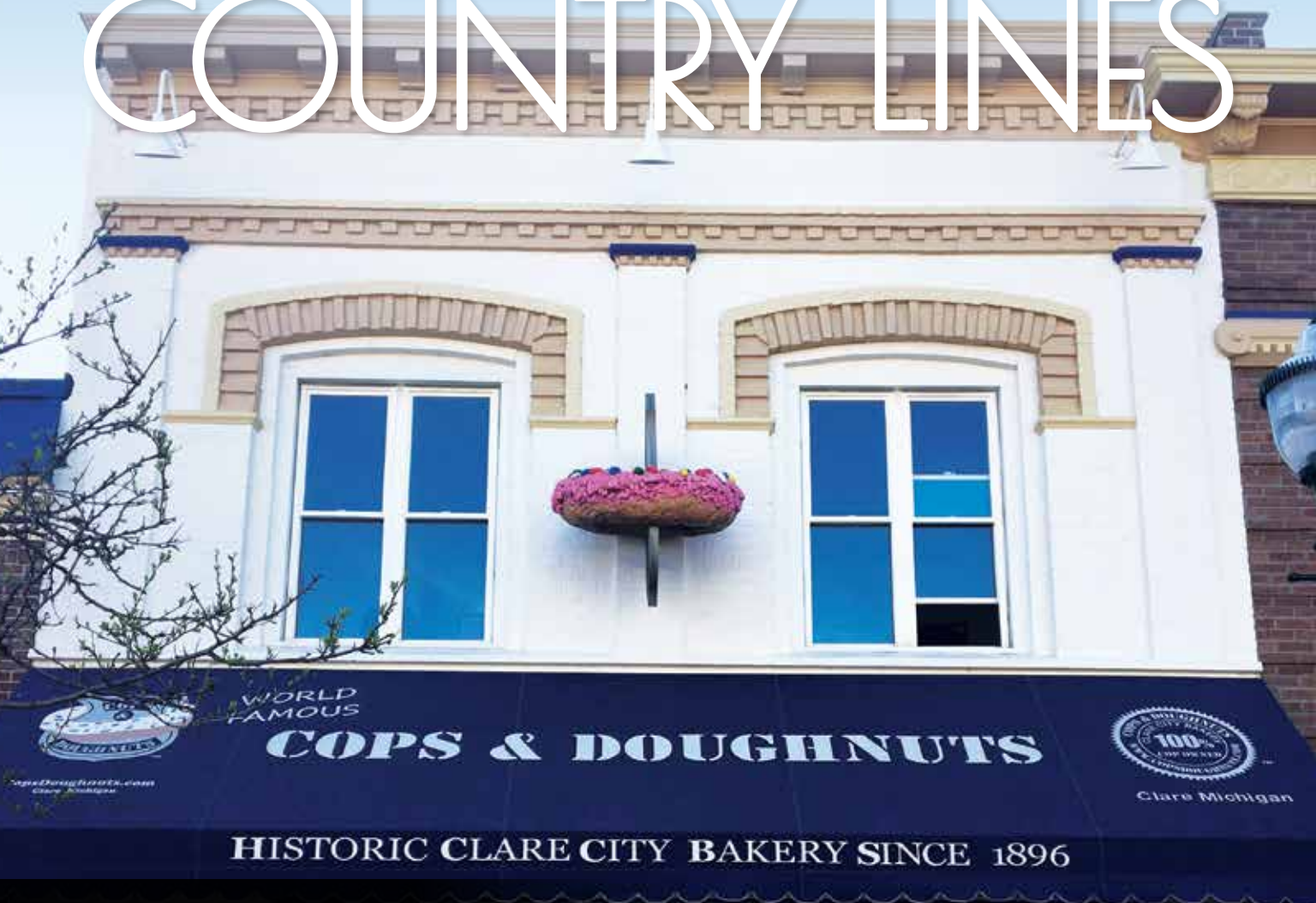


# MICHIGAN COUNTRY LINES



## PROTECT & Serve

The Sweet Story  
Of Cops & Doughnuts



# WATERFURNACE KNOWS THAT TRAINING MATTERS

While some companies allow *anyone* to sell their products, WaterFurnace requires an ongoing commitment to the most extensive training and education programs in the industry. WaterFurnace only invests in dealers who are passionate about offering the finest in products and service, and are less concerned with simply being the cheapest. That's why WaterFurnace is the most recognized and respected name in residential geothermal. Or maybe it's because WaterFurnace units use the clean, renewable energy found in your backyard to provide savings up to 70% on heating, cooling and hot water. Or is it thanks to the industry's best warranty? Contact your local WaterFurnace dealer for more information, and decide for yourself.

## Your Local WaterFurnace Dealers

**Bad Axe**  
B & D Htg  
(989) 269-5280  
[bdheating.com](http://bdheating.com)

**Berrien Springs**  
WaterFurnace  
Michiana  
(269) 473-5667  
[gogreenmichgeothermal.com](http://gogreenmichgeothermal.com)

**Big Rapids**  
Stratz Htg & Clg, Inc.  
(231) 796-3717  
[stratzgeocomfort.com](http://stratzgeocomfort.com)

**Caro**  
AllTemp Comfort, Inc.  
(866) 844-HEAT (4328)  
[geo4less.com](http://geo4less.com)

**Clifford**  
Orton Refrig & Htg  
(989) 761-7691  
[sanduskygeothermal.com](http://sanduskygeothermal.com)

**DeWitt**  
S & J Htg & Clg  
(517) 669-3705  
[geothermalservicesofmichigan.com](http://geothermalservicesofmichigan.com)

**Hart/Ludington**  
Adams Htg & Clg  
(231) 873-2665  
[adamsheatingcooling.com](http://adamsheatingcooling.com)

**Indian River**  
M & M Plmb & Htg  
(231) 238-7201  
[mm-plumbing.com](http://mm-plumbing.com)

**Jackson/Adrian**  
Comfort 1 Htg & A/C  
(517) 764-1500  
[comfort1.net/geothermal](http://comfort1.net/geothermal)

**Kalkaska**  
Kalkaska Plmb & Htg  
(231) 258-3588  
[kalkaskageothermal.net](http://kalkaskageothermal.net)

**Mt Pleasant**  
Walton Htg & Clg  
(989) 772-4822  
[waltonheating.com](http://waltonheating.com)

**Muskegon**  
Adams Htg & Clg  
(231) 873-2665  
[adamsheatingcooling.com](http://adamsheatingcooling.com)

**Muskegon**  
Kiessel Geothermal  
Htg & Clg  
(231) 747-7509  
[kiesselsgeo.com](http://kiesselsgeo.com)

**Portland**  
ESI Htg & Clg  
(517) 647-6906  
[esiheating.com](http://esiheating.com)

**Sunfield**  
Mark Woodman  
Plmb & Htg  
(517) 886-1138  
[mwphonline.com](http://mwphonline.com)

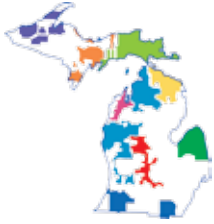
**Traverse City**  
Geofurnace  
Htg & Clg  
(231) 943-1000  
[watergeofurnace.com](http://watergeofurnace.com)

D & W Mechanical  
(231) 941-1215  
[dwgeothermal.com](http://dwgeothermal.com)



visit us at [waterfurnace.com](http://waterfurnace.com)

WaterFurnace is a registered trademark of WaterFurnace International, Inc.  
©2017 WaterFurnace International, Inc.



Michigan's Electric Cooperatives  
countrylines.com

**July/August 2017**  
**Vol. 37, No. 7**

Executive Editor  
**Casey Clark**

Editor  
**Christine Dorr**

Copy Editor  
**Heidi Spencer**

Design and Layout  
**Karreen Bird**

Publisher  
**Michigan Electric  
Cooperative Association**

**Michigan Country Lines**, USPS-591-710, is published monthly, except August and December, with periodicals postage paid at Lansing, Mich., and additional offices. It is the official publication of the Michigan Electric Cooperative Association, 201 Townsend St., Suite 900, Lansing, MI 48933.

**Subscriptions** are authorized for members of Alger Delta, Cherryland, Great Lakes, HomeWorks Tri-County, Midwest Energy, Ontonagon, Presque Isle, and Thumb electric cooperatives by their boards of directors.

**POSTMASTER:** SEND ALL UAA TO CFS.

Association officers are **Robert Kran**, Great Lakes Energy, chairman; **Mark Kappler**, HomeWorks Tri-County Electric, vice chairman; and **Eric Baker**, Wolverine Power Cooperative, secretary-treasurer. **Craig Borr** is president and CEO.

**CONTACT US/LETTERS TO EDITOR:**

Michigan Country Lines  
201 Townsend St., Suite 900  
Lansing, MI 48933  
248-534-7358  
cdorr@meca.coop  
countrylines.com

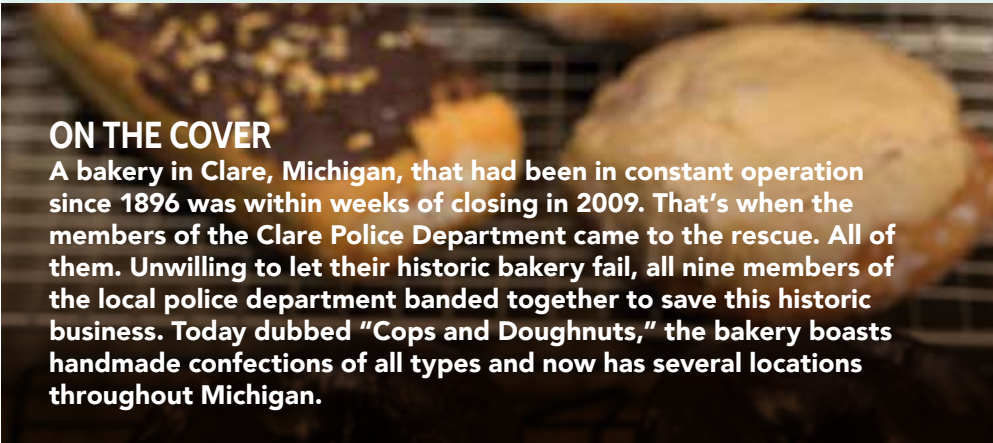


### Change of Address:

Please notify your electric cooperative. See page 4 for contact information.

The appearance of advertising does not constitute an endorsement of the products or services advertised.

# IN THIS ISSUE



## ON THE COVER

A bakery in Clare, Michigan, that had been in constant operation since 1896 was within weeks of closing in 2009. That's when the members of the Clare Police Department came to the rescue. All of them. Unwilling to let their historic bakery fail, all nine members of the local police department banded together to save this historic business. Today dubbed "Cops and Doughnuts," the bakery boasts handmade confections of all types and now has several locations throughout Michigan.

6

## FEATURE

Protect & Serve: The Sweet Story  
Of Cops & Doughnuts  
*Emily Haines Lloyd*

10

## COOKING COMMUNITY

Transform Dinner With These Easy-To-Prepare  
Chicken Recipes  
*Christin McKamey & Our Readers*

Enter Our Recipe Contest And Win A \$50 Bill Credit!

14

Doughnuts And Craft Beer: A Divine Pairing  
*Emily Haines Lloyd*

18

## READER'S PAGE

Beaver Island's Music Festival Offers Unique  
Vibes In A Throwback Setting  
*Jack O'Malley*

Guess Our New Mystery Photo And Win  
A \$50 Bill Credit!

## I Remember...

We invite members to share their fondest memories.

Country Lines will pay \$50 for stories we publish.

### Guidelines

1. Approximately 200 words
2. Digital photos must be at least 600 KB
3. Only one entry per household, per month
4. Country Lines retains reprint rights
5. Please include your name, address, email, phone number and the name of your electric co-op
6. Submit your memories online: countrylines.com or email to cdorr@meca.coop



# Please Vote To Elect A GLE Director

## Board of Directors

**Mark Carson** *Chairman District 2*  
01950 Anderson Rd., Boyne City, MI 49712  
231-675-0561 • mcarson@glenergy.com

**Dale Farrier** *Vice-Chairman District 5*  
2261 Wheeler Lake Rd. NE, Kalkaska, MI 49646  
231-564-0853 • dfarrier@glenergy.com

**Larry Monshor** *Treasurer District 4*  
1541 Thumm Rd., Gaylord, MI 49735  
989-705-1778 • lmonshor@glenergy.com

**Paul Byl** *Secretary District 7*  
9941 W. Buchanan Rd., Shelby, MI 49455  
231-861-5911 • pbyl@glenergy.com

**Tim Brechon** *Director District 8*  
22322 220th Ave., Paris, MI 49338  
630-379-6218 • tbrechon@glenergy.com

**Richard Evans** *Director District 3*  
11195 Essex Rd., Ellsworth, MI 49729  
231-883-3146 • revans@glenergy.com

**Robert Kran** *Director District 6*  
7380 N. Tuttle Rd., Free Soil, MI 49411  
231-464-5889 • bkran@glenergy.com

**John LaForge** *Director District 9*  
7363 Walters Rd., Delton, MI 49046  
269-623-2284 • jlaforge@glenergy.com

**Paul Schemanski** *Director District 1*  
5974 Stolt Rd., Petoskey, MI 49770  
231-439-9079 • paul.schemanski@glenergy.com

**President/CEO: Bill Scott**  
888-485-2537

**Communications**  
**Director/Editor: Dave Guzniczak**  
231-487-1316  
dguz@glenergy.com

**Boyer City Headquarters**  
1323 Boyne Ave., P.O. Box 70  
Boyer City, MI 49712  
**Hours:** 8 a.m.–4:30 p.m. M–F  
**Phone:** 888-485-2537  
**Email:** glenergy@glenergy.com

**To report an outage, call:**  
**1-888-485-2537**

**gtlakes.com**

**Change of Address:**  
888-485-2537, ext. 8924

*Great Lakes Energy is an equal opportunity provider and employer.*

facebook.com/greatlakesenergy



**Bill Scott**  
Great Lakes Energy  
President/CEO

If you're a Great Lakes Energy member in district 3, 4 or 5, please read the candidate information inside and cast your vote with the attached mail-in ballot. You can also view board candidate information online at [gtlakes.com/board-of-directors](http://gtlakes.com/board-of-directors). For all other members, your opportunity to vote will come in 2018 or 2019.

Every co-op, whether it's your credit union or a farm co-op, follows the basic principle of *one member, one vote*. Most often you are asked to vote to elect fellow members who will represent you on the board of directors. These folks are your friends, neighbors and fellow residents of your community.

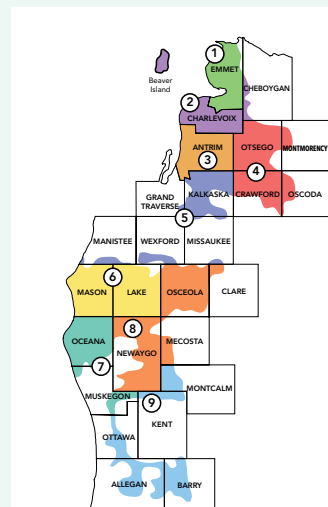
Simply cast your vote from the comfort of your home and drop the postage-paid ballot in the mailbox. Voting is that simple and convenient. If you lose or accidentally throw away the ballot, contact us, and we'll send you another one.

Members vote for a director once every three years. In my case, I'm a GLE member from Emmet County. My opportunity to vote will come next year.

Part of the value of being a cooperative member is everyone's vote carries equal weight. Whether it's a business with several owners or a small home with a single owner, each has one membership and one vote. In the case of a husband and wife, their joint membership entitles them to one vote.

The nine directors on the board are elected from each district for a three-year term.

Co-ops believe in the power of human connections and encourage your participation in the board election. If you live in districts 3, 4 or 5, please exercise your right to vote. It's the cooperative difference. ■



## Districts By County

### 2017 election

District 3 – Antrim County

District 4 – Otsego, Montmorency, Oscoda and Crawford counties

District 5 – Grand Traverse, Kalkaska, Manistee, Missaukee and Wexford counties.

# Bylaw Changes Approved

The Great Lakes Energy Cooperative Board of Directors recently approved several changes in the cooperative bylaws. The changes are indicated in red below along with the reasons for them.

## Article I, Section 4. Purchase and Production of Electric Power and Energy.

(a) Each member shall, as soon as electric power and energy shall be available, purchase from the Cooperative all central station electric power and energy purchased for use in the Cooperative's service territory (except to the extent that the Board may, in writing, waive such requirement) and shall pay therefor at rates, which shall from time to time be fixed by the Board, ~~as approved by the Michigan Public Service Commission.~~

(b) Production or use of electrical energy on a member's premises, regardless of the source thereof, by means of facilities, which shall be interconnected with the Cooperative facilities shall be subject to appropriate regulations as shall be fixed from time to time by the Cooperative ~~in accordance with the rules of the Michigan Public Service Commission.~~

**Reason for proposed revision:** Bylaw references rates "as approved by the Michigan Public Service Commission." The change reflects board responsibility for rate approvals.

## Article I, Section 8. Right of Way Easements.

(a) Each member shall grant to the Cooperative, without compensation therefore, all easements or rights of way over, on and under such lands owned or leased by or mortgaged by the member in accordance with such reasonable terms and conditions as the Cooperative shall require for the furnishing of electric ~~and/or telecommunications and broadband~~ service for the member and for the construction, operation, maintenance or relocation of the Cooperative's electric facilities.

**Reason for proposed revision:** To strengthen the wording by including telecommunications and broadband service should GLE provide such service in the future.

## Article I, Section 9. Petitions.

Petitions by the membership authorized under these Bylaws shall be on forms prepared and available from the Secretary of the Cooperative.

With regard to such petitions, the following are required:

(a) All members signing such petitions shall include thereon their mailing address, ~~account number~~ primary phone number, and date signed;

**Reason for proposed revision:** For information security purposes, remove the petition requirement for a member account number.

## Article II, Section 8. Vacancies

(b) A vacancy on the Board shall ~~automatically~~ occur ~~when the Board determines by 2/3 vote where~~ a director has ceased ~~at any time~~ to meet all of the qualifications for being a director as set forth in Sections 1 and 2 of this Article II.

**Reason for proposed revision:** To clarify the process for director disqualification.

The full set of bylaws can be viewed on the Great Lakes Energy website, [gtlakes.com](http://gtlakes.com), under the "About" tab.

JOIN



## JOIN PEOPLE FUND PLUS

Now you can make a greater impact in your local community with People Fund PLUS.

Choose a People Fund donation level in addition to your rounded-up amount. Your donations are awarded in the form of grants to local community nonprofit groups.

All People Fund contributors have the chance to win a \$100 bill credit twice per year. In 2016 the People Fund awarded \$204,752 in grants to local nonprofits. Visit [gtlakes.com](http://gtlakes.com) to see the list of grant recipients in your area.

### JOIN TODAY!

Working together, we can help enhance our local communities and meet the needs of so many.

#### Example:

**With People Fund:** Bill Amount \$65.42 + \$.58 for People Fund = \$66.00

**With People Fund PLUS:** Bill Amount \$65.42 + \$.58 for People Fund + \$2.00 for PLUS = \$68.00

Call 888-GT-LAKES or visit [gtlakes.com/peoplefundenroll](http://gtlakes.com/peoplefundenroll) to join.



# PROTECT & SERVE

## The Sweet Story Of Cops & Doughnuts

By Emily Haines Lloyd

**T**here's something sweet happening in Clare, Michigan, and it's on a roll.

It started with a classic tale of a group of small-town police officers sitting in a local doughnut shop back in 2009. But then a twist occurred—the owner of Clare City Bakery told the officers he had to sell the bakery, which was one of the few open storefronts in the two-block downtown area of Clare. The officers lamented, continued talking and were struck by a thought—what if *they* bought the bakery?

“At first we laughed at [the thought of] a bunch of cops buying the only doughnut shop in town,” said

Al “Bubba” White, the now vice president of Cops & Doughnuts. “But eventually we stopped laughing.”

The recession had hit hard and the police force saw their small town slowly close storefront after storefront. Eventually, Clare City Bakery, a shop that had been around since 1896—surviving wars and the Great Depression—looked like it was about to be lost as well.

After making calls to the owner and quick talks among the nine-member police force, the deal was finalized within two weeks. Clare City Bakery became Cops & Doughnuts: Clare Precinct.

Without much business experience, White, along with now-president Greg “Ryno” Rynearson, as well as the other officers/owners, kept some of the bakery’s key recipes along with the head baker. The result was a good first day.

It wasn’t long before the story of a bunch of cops opening a doughnut shop caught some attention. They got a call from a reporter with *The Associated Press*, confirming that they were, in fact, a bunch of cops who opened a doughnut shop. Before they knew it, the guys were fielding interviews from





**“It’s a combination of things— a good product, of course, but it’s also a good story. We don’t just sell doughnuts,” explains White. “We sell cops selling doughnuts.”**

*“NBC Nightly News,” “Fox and Friends,” and “Good Morning America.”*

When asked why he thinks Cops & Doughnuts is a story, White has some ideas.

“It’s a combination of things—a good product, of course, but it’s also a good story. We don’t just sell doughnuts,” explains White. “We sell cops selling doughnuts.”

That combination, plus a healthy dose of good humor and community spirit, seems to be working in a big way. The Cops & Doughnuts crew saw that they had a good thing and knew they could grow. But where to expand became the next question. It had been important to them to save their beloved Clare City Bakery and the important role it had played in their story. So, what if they could save another historic bakery?

The group expanded to McDonald’s Bakery, a fifth-generation establishment in Ludington, Mich., followed by The Sutherland Bakery in Bay City, which originally opened in 1912. The crew then expanded and opened a precinct (or bakery) in Jay’s Sporting Goods in Gaylord, and finally, a gem in South Bend, Indiana, was acquired, known as The Dainty Maid Bake Shop. Each town was reinvigorated by the lively atmosphere and genuine love that White, Rynearson and the team have for the history, community and, of course, the bakery.

With five precincts, more than 500 retail outlets, and approximately half a million customers visiting annually, Cops & Doughnuts is well on its way to their goal of “world domination,” they attest. However, at the very heart, it’s still a group of civic-minded public servants determined to protect the rich history of small-town bakeries by serving up great doughnuts. ■

# Save Now On ENERGY STAR Air Purifiers

If you suffer from allergies, or would simply like to ensure the best air quality in your home, an air purifier is a great investment. These appliances can be costly, but the Energy Optimization program is here to help: Receive a \$50 cash incentive when you purchase an ENERGY STAR® qualified air purifier!

## What Is An Air Purifier?

Room air purifiers are portable appliances that remove fine particles from the indoor air, such as pollen, pet dander, tobacco smoke and mold spores. Purifiers should be placed as close to the main source of the contaminant as possible, keeping the unit(s) unobstructed and at least a few feet away from televisions, microwaves, and stereo equipment. Air purifiers are most effective when all doors and windows are shut.

## Why ENERGY STAR?

ENERGY STAR qualified air purifiers are 40 percent more efficient than standard models, saving consumers up to \$30 per year on utility bills! ENERGY STAR is a trusted brand for quality products that use significantly less energy than required by minimum federal standards. All ENERGY STAR products undergo rigorous testing to ensure maximum energy savings.



## Receive Cash Back!

To claim your \$50 incentive, submit a rebate application online, or send it to us via mail, fax, or email. Include a copy of your sales receipt(s) per the instructions on the form.

As always, visit [michigan-energy.org](http://michigan-energy.org) or call 877-296-4319 for additional energy-saving information and incentives. ■



**Breathe  
Easy**

## Protect your family with an air purifier.

Reduce indoor pollutants, including:

- Pet dander
- Pollen
- Mold spores
- Seasonal allergens

## \$50 CASH INCENTIVE

Purchase an ENERGY STAR® model for cash back and 40% more energy savings!

**ONLINE:** [michigan-energy.org](http://michigan-energy.org)

**PHONE:** 877.296.4319



Energy Optimization programs and incentives are applicable to Michigan electric service locations only. Other restrictions may apply. For a complete list of participating utilities, visit [michigan-energy.org](http://michigan-energy.org).



# The Art Of Nature

**GLE Photo Contest:** Each month members can submit photos on Facebook or our website for our annual photo contest. The photo with the most votes on Facebook is published here along with other selections. Enter again in July and August; see details below.

Most  
Votes on  
Facebook!



Nature Close-up—Abby Schneiderei, Irons



Tunnel Vision—Loraine DeBoer, Custer



January Thaw—Debra DeYoung, Idlewild



Reflections Of Spring—Sheila Melke, Charlevoix



Jack Frost's Path—Myra Reimink, Hamilton

## Enter Our Photo Contest And Win!

Visit [Facebook.com/greatlakesenergy](https://www.facebook.com/greatlakesenergy) and click "Photo Contest" from the menu tabs. Not on Facebook? You can also enter the contest at [gtlakes.com/photocontest/](https://www.gtlakes.com/photocontest/). Make sure to vote, and encourage others to vote for you, too. The photo receiving the most votes from our online and Facebook contest will be printed in an issue of *Michigan Country Lines* along with some of our other favorites. All photos printed in the magazine throughout the year will be entered to win a \$200 bill credit in December 2017. Submit your best shot and encourage your friends to vote!

Our July theme is **Birds and Feathers**. Photos can be submitted **from July 1 to July 20** to be featured in our September issue.

Our August theme is **Life's a Beach—Michigan Waters**. Photos can be submitted from **August 1 to August 20** to be featured in the October issue.

# CHICKEN CHALLENGE

Transform your dinner with these easy-to-prepare chicken recipes.

## Pepper Jack Pasta

*Deb Mitteer, Great Lakes Energy*

- 2 boneless, skinless chicken breasts, cut into medallions
- 1 red bell pepper, cut into small strips
- 1 green bell pepper, cut into small strips
- 1 yellow bell pepper, cut into small strips
- 1 medium onion, diced
- 4 cups mini penne pasta, uncooked
- 5 cups milk
- 8-ounce block pepper jack cheese, cut into small pieces
- 2–3 tablespoons cooking oil

Drizzle cooking oil in a dutch oven pot. Add the chicken medallions and cook chicken until no longer pink. Remove chicken from pot and set aside. Add the peppers and onions to the pot and cook until onion is transparent. Add chicken back to the pot with the peppers and onion. Add the uncooked penne pasta and 5 cups of milk to the pot. Bring the milk to a boil and stir constantly for 8–10 minutes or until pasta is tender. Remove from stove and add the pepper jack cheese. Let set until the cheese is melted. Stir until well mixed. Serve immediately.

▶ Watch a video of this recipe at <https://goo.gl/BRjFXS>



## Rosemary Chicken And Brie Bundles

Denise Barth, Cherryland

- 8-ounce can refrigerated crescent dinner rolls
- 2 tablespoons green onions, sliced
- 6 ounces Brie cheese, rind removed, cubed
- 1 ½ cups cooked chicken breast, chopped
- 1 egg, beaten
- 1 teaspoon crushed dried rosemary
- 1 tablespoon grated Parmesan cheese



Heat oven to 350 F. Separate dough into four rectangles, press perforations to seal. Spoon ¼ of green onions onto the center of each rectangle; top with ¼ of the Brie cheese cubes. Top each with ¼ of chicken, pressing into cheese. Fold short

ends over chicken, overlapping slightly. Fold open ends over about ½ inch to form a rectangle. Press all edges to seal. Place seam side down on ungreased baking pan or cookie sheet. Cut three 1-inch slashes on top of each roll to allow steam to escape. Brush with egg, sprinkle with Parmesan cheese and rosemary. Bake for 21 to 26 minutes or until golden brown. Let stand 5 minutes before serving. Serves 4.

## Dawn's Elegant Chicken

Dawn Wagner, Great Lakes Energy

- 8 half chicken breasts (4 whole)
- 8 Swiss cheese slices
- 1 can cream of chicken soup
- 1 can cream of celery soup
- ½ to ¾ cup white cooking wine
- Pepperidge Farm Stuffing mix (or your favorite)
- ⅔ stick of butter



Preheat oven to 350 F. Spray a 9×13 baking dish with vegetable spray. Place chicken breasts in the baking dish. Place a slice of Swiss cheese on each piece of chicken. In a separate bowl, mix the cream of chicken soup, the cream of celery

soup and the white wine. Pour the mixture over the chicken. Cover the entire top of the dish with stuffing mix. Melt butter and pour it on top of the stuffing/chicken. Bake for 1 hour. Serve over Uncle Ben's Wild Rice (or your favorite).



Submit your favorite recipe for a chance to win a \$50 bill credit and have your recipe featured in *Country Lines*:

- "Slow Cooker Favorites" due August 1
- "Pleasing Pies" due September 1

Go to [micoopkitchen.com](http://micoopkitchen.com) for more information and to register.

## Cream Cheese Chicken Dumpling Soup

Jessi Smith, Great Lakes Energy

- 2 tablespoons butter
- 1 medium onion, chopped
- 1 celery stalk, chopped
- 2 carrots, chopped
- 2 cups cooked chicken
- 8 cups chicken broth
- 2 eggs
- 1 package of cream cheese, cut into 1-inch cubes
- 1 cup flour
- salt and pepper, to taste



Melt butter in soup pot. Add chopped onions and sauté for 2 minutes or until lightly golden brown. Add chopped celery and carrots, and sauté for 2 minutes. Add chicken and chicken broth to vegetables. Continue to cook soup on medium

heat. To make the cream cheese dumplings, you will need either a food processor or a bowl and mixer. Combine the eggs, cubed cream cheese and flour, mix until smooth. When the broth in the soup pot is near a boil, reduce heat to low. Dip a large metal spoon into the pot to get the spoon hot. Remove about half a spoonful of the dumpling mixture and dunk the spoon into the soup, wiggling the spoon until the dumpling releases. Repeat this step until all the dumplings are in the pot. Allow the last dumplings to cook 2 minutes per side. Add salt and pepper to taste. Serve and enjoy.

# Board of Directors Candidate

**DISTRICT 5 GRAND TRAVERSE, KALKASKA, MANISTEE, MISSAUKEE AND WEXFORD COUNTIES**



**DALE FARRIER**

**Home:** Kalkaska

**Occupation:** Office Manager, Antrim County Road Commission

**Co-op Member:** 33 years

**Co-op Director:** 27 years

**1) Why are you seeking a board seat?**

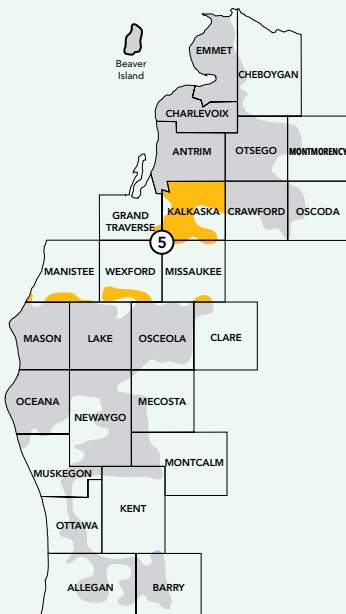
The GLE board exists to serve our membership and oversee the management of our company. GLE is one of the largest and best run electric cooperatives in the country, with many of the best employees out there. And, thanks to you, I've been part of making that happen. We enjoy living in rural Michigan, with our beautiful lakes and forests, and we also want the lights to come on when we flip the switch. Making that happen consistently, safely and affordably isn't always easy. However, I enjoy the challenge of helping GLE do just that. Being good stewards of our environment is a must. GLE's purchased electricity mix is over 15 percent renewable. Using our revenues wisely is also very important; after all, it's the members' money: yours and mine. I would like to continue to serve District 5, and the entire GLE membership.

**2) Do you have energy industry experience, including work as a Great Lakes Energy employee, electric utility contractor or at another energy service provider? If yes, please list employer(s), years of experience and brief details.**

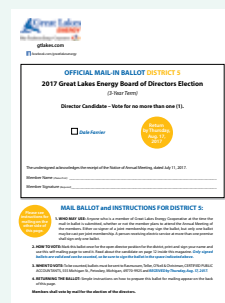
Serving on the GLE board the past 27 years has been an invaluable education. The electric industry and the desires of our membership have changed considerably in that time. I have received continual education from industry professionals and board member training courses through the National Rural Electric Cooperative Association, the Michigan Electric Cooperative Association and others. I also understand and use accounting and budgets on a daily basis.

**3) What other qualifications or relevant information about yourself would you like to share?**

I enjoy rural living and its challenges, like being "at the end of the electric line." My wife, Lisa, and I enjoy our grandkids. I've coached kids' soccer, hockey and baseball and I'm active with my church.



*As a member and owner of an electric cooperative, you decide who will represent you on the Great Lakes Energy Cooperative Board of Directors.*



**Vote!**

See the back cover to cast your ballot for one candidate in District 5.



# Renewable Energy Program

## Three Ways To Participate

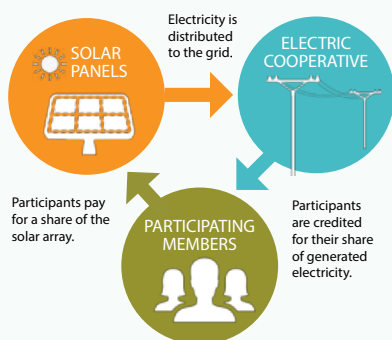
1

### Community Solar

Community Solar offers members the benefits of solar without the installation and maintenance expense involved with owning your own solar panels. Of the three programs, it is the lowest cost option for those interested in investing in renewable energy.

#### How does it work?

Members purchase a subscription in the SpartanSolar community array located across from our power supplier's headquarters in Cadillac. One subscription entitles a member to a share in the energy produced by the solar array. GLE continues delivering energy to the subscribing members, who receive a solar credit on their bills. Members have nothing to install or maintain and can cancel at any time.



#### Option Details

- 15-year agreement
- Credit of \$0.10/kWh generated
- Subscription cost: \$600/panel upfront or \$10 monthly bill charge for five years
- Energy Optimization rebates up to \$150 per panel for 20 panels when you pay in full

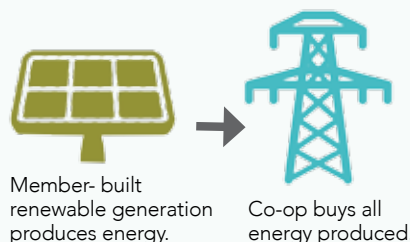
2

### Buy-All/Sell-All

If a member's goal is to produce more renewable energy than they use, this program is for them. Of the three programs, this could involve the largest investment due to the larger renewable energy generating system the member would likely install.

#### How does it work?

The member installs up to a one megawatt (MW) renewable energy generating system (solar, wind, etc.). Our power supplier buys all electricity the system generates at \$0.10 per kWh. This option turns a member into a true energy supplier to the co-op.



#### Option Details

- 20-year agreement
- \$0.10/kWh for energy generated on premises and placed on the grid
- One MW cap
- Energy Optimization rebates up to \$3,000

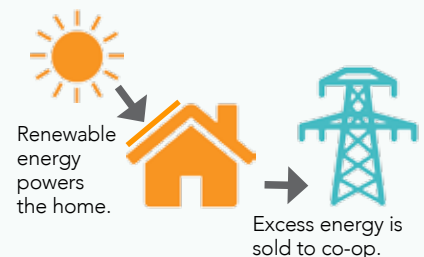
3

### Net Metering

This program was revised and is for members whose goal is to meet their home's energy needs with their own renewable energy generating system.

#### How does it work?

Every kWh of renewable energy produced by the member and used in their home is a kWh the member doesn't have to buy from GLE. The savings is based on our retail rate. Should a member produce more energy than they use, they will receive a bill credit of \$0.056 per kWh for any excess energy they put on the grid.\*



#### Option Details\*

- 10-year agreement
- Retail offsets for kWh produced and used on premises
- \$0.056/kWh for energy generated and placed on the grid
- 20 kW cap
- Energy Optimization rebates up to \$3,000

\*Program changes in effect for new systems in production after June 1, 2017. Contact us for details.

In addition to these programs, all members receive nearly 20 percent of their power from clean, renewable sources due in large part to our power supplier's investment in wind energy generation in Michigan.

Visit [spartansolar.com](http://spartansolar.com) for more information or call 888-GT-LAKES, ext. 8957.

# DOUGHNUTS & Craft Beer: A Divine Pairing

Our cover story on page 6 features the fun-loving Cops & Doughnuts bakeries. So, what better than to pair a few of these business-savvy police officer's favorite baked goods with some popular Michigan-made beers. It's a fun idea for dinner parties, tailgating or lounging around the fire pit.

By Emily Haines Lloyd | Photos—Christin McKamey

This is a classic doughnut for a reason and is a dream to pair.

When it comes to chocolate, fruit is pretty much a no-brainer. For a berry "wow factor," try **Short's (Bellaire) Soft Parade**—a fruity-rye ale featuring strawberries, blueberries, raspberries and blackberries. It's a home run in contrasting flavors.

If you want to stay in the sweet pocket, look at **Saugatuck Brewing Company's (Saugatuck) Neopolitan Milk Stout**. It truly drinks like its namesake with a blend of chocolate, vanilla and strawberry. Super smooth and rich, you'll feel like you just added a dollop of ice cream to your already delicious doughnut.



**CHOCOLATE  
DIP RAISED  
GLAZED**



**CINNAMON  
BUN MAPLE  
FROSTED**

You would think a fresh-baked cinnamon bun can't get any better, but then you discover the delicious Cops & Doughnuts maple frosting and realize you were wrong.

A dessert lover's dream is a rich pairing with **New Holland's (Holland) Dragon's Milk Bourbon Barrel Aged Stout**. Its roasty malt character intermingled with deep vanilla tones, all dancing in an oak bath, is a whopping 12 percent ABV, but perfect for sipping with this dreamy doughnut.

**Screamin' Pumpkin Ale from Griffin Claw Brewing Co. (Birmingham)** is like a slice of warm pie, offering flavors of cinnamon, clove, sweet pumpkin and a little molasses. Paired with the cinnamon bun, it's like double dipping in the dessert category.

## PEANUT BUTTER DEPUTY

Cops & Doughnuts' Peanut Butter Deputy is a Long John filled with peanut butter cream, topped with chocolate frosting and chopped peanuts. In other words—YUM!

Founder's (Grand Rapids) Curmudgeon is an old ale brewed with molasses and uber malty. It's a barrel-aged brew that seems made for this kind of decadent pairing.

Atwater Brewery's (Grand Rapids) Vanilla Java Porter has the rich flavor of dark roasted coffee with plenty of vanilla notes. It's a fairly simple beer that packs a classic coffee and doughnut punch.



## FELONY FRITTER

This is a classic apple fritter that is sweet, tart and showcases hints of cinnamon. Each one is handcrafted in the historic bakery in downtown Clare, Michigan. Let's be honest, they're huge, satisfying and could be shared, but do you really want to do that?

For a beer pairing, try a hoppy IPA like North Peak's (Traverse City) Diabolical. It is unfiltered and dry-hopped with Michigan grown Chinook and Cascade hops. It has a smooth malt character and citrus pine aroma that brings forward the tartness in the apples.

Looking for something a bit more earthy and smoky? Try a Scotch Ale, such as Dark Horse Brewing Company's (Marshall) Scotty Karate. It's brewed with cherry wood smoked malt instead of the traditional peat smoked malt, offering up warming notes of coffee, caramel and sweet caramelized brown sugar. If that doesn't sound like a pair made in fritter heaven, we don't know what does.



Update Software  
Update Automatically

## Keep Your Software Updated



**Mike Youngs**  
Great Lakes Energy  
Business Security &  
Networks Director

Greetings and welcome back!

Ransomware. Spyware. Malware. What do all these wares have to do with each other? They only exist because of flaws in software.

Software is made up of lines and lines of “code,” which are instructions telling a computer what to do. You’ve probably heard the term “software bug,”

which is a flaw in a code that causes a computer to malfunction or do something unexpected. Some flaws are harmless; others can be dangerous. When a hacker finds a dangerous flaw they can use to their advantage, we call that flaw a vulnerability. Malware takes advantage of these vulnerabilities to do their dirty work.

On average, about 15 to 50 flaws exist per every 1,000 lines of software code. That’s up to 50 opportunities for a hacker to exploit. A modern operating system, such as Windows 10 or Mac OSX, can easily have over 50 million lines of code. That’s up to 2.5 million vulnerabilities, just in the operating system. Open up an application like a web browser and that runs through another 16 million lines of code. That’s up to 3.3 million potential flaws for hackers to ruin your day. All you have to do is turn on your computer and go online and potential damage can be done.

Fortunately, software authors know some flaws naturally will exist. Thus, they constantly review and fix the code. The fix is called a software patch. The trick is that you have to install the patch to keep your software up-to-date. This is very important:

Keeping every application and operating system “patched” is as effective against malware as anti-virus software.

Software authors recognize the importance of this too, and have built-in tools to keep the software secure and up-to-date. Windows has in *Windows Settings* a section for *Update and Security* with options to do it automatically. Macintosh has in their *System Preferences* a feature to “Automatically check for updates” and options to automatically install them. Linux users will have similar options. Smartphones include this feature too. My recommendation is the same for all—use the automatic update features!

For applications, some also have built-in tools to keep themselves up-to-date. Google Chrome is a good example. Most Microsoft applications are included with Windows Update. However, there are many popular applications that don’t have an automatic update mechanism.

On Windows, I use a free program called Secunia Personal Software Inspector, or Secunia PSI. It will scan your computer for programs that need updating, then provides links, instructions, and in some cases, the actual update for you.

For Mac, Linux, and smartphones, you can use the various App Stores or system update tools to scan for updated programs and install them automatically. For whichever flavor of software you use, keep it up-to-date to help keep ransomware in the history books.

That’s it for now. I’ll be back again with more tips on how to get the most out of the online world as safely and securely as possible. ■



# What Is The Right-Of-Way?

**M**otorists should be familiar with the term “right-of-way,” but it has a different meaning to your electric cooperative.

The right-of-way is the strip of land that electric utilities, through an easement or other mechanism, are granted access to use for specific purposes. A typical Great Lakes Energy right-of-way is 30 feet wide for single-phase (two overhead wires) lines and 40 feet for three phase (more than two wires) lines. The power line is usually centered within the right-of-way.

Easement agreements give GLE access rights to private property for the purpose of constructing, inspecting and maintaining its power line distribution system. The easement is typically a written agreement between the utility and property owner.

## Who owns the right-of-way?

The property owner is the owner of the land that the power line crosses. Please remember that GLE’s rights-of-way are often on private property. They must be treated like any private land and only be used with the owner’s permission. If the right-of-way crosses state forest or other public land, rules on allowable uses of the property still need to be followed. In addition, the use of motorized vehicles (especially ATVs and snowmobiles) in the power line right-of-way can be dangerous and should be avoided. A collision with a utility pole or guy wire is a personal hazard that can also result in outages.

---

Please remember that Great Lakes Energy’s rights-of-way are often on private property. They must be treated like any private land and only be used with the owner’s permission.

---

## How does GLE use the right-of-way?

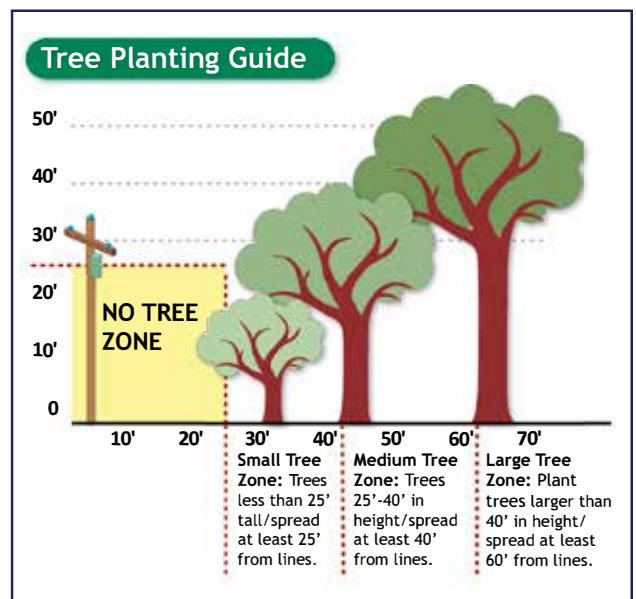
Access to the right-of-way allows the co-op to service and repair its power line distribution equipment, manage vegetation growth within the right-of-way that threatens electric service reliability and safety, and extend new lines to meet growth.

Trees are the most common cause of power outages for our members. Routine maintenance of trees and other vegetation on more than 11,000



Great Lakes Energy uses the right-of-way to build and maintain its power lines and to manage trees and other vegetation within it that could pose a threat to your electric service.

miles of GLE overhead line is a large undertaking, but one that improves reliability for our members. Routine tree maintenance in the right-of-way is completed on a regular, rotating basis. GLE power line rights-of-way in 17 counties are on the tree trimming schedule for this year. Members served by the lines scheduled for maintenance are contacted by phone, e-mail and postcard mail prior to any work being done. Please visit [gtlakes.com](http://gtlakes.com) or contact us for more information. ■



# Beaver Island's Music Festival Offers Unique Vibes In A Throwback Setting

With a population of 600 living on 56 square miles of land off the coast of Charlevoix in Lake Michigan and accessible only by boat or air, Beaver Island could be described as a throwback to another era. How fitting then that the island hosts its own musical festival featuring sounds of the Renaissance.

Celebrating its 16th season this summer, Baroque on Beaver (known as BonB) focuses on classical music; however, guests may also be treated to jazz, Broadway, folk and other genres throughout the 10-day festival. Renowned musicians from symphonies in Midland, Grand Rapids, Chicago, and even as far away as Mexico, gather for what many consider the epicenter of classical music on the Great Lakes.

Originally organized by locals for locals, the event quickly gained a wider audience and became one of the island's most popular events and tourist destinations. According to Festival Director Matthew Thomas, the reason for the event's growth is simple. "Beaver Island is a unique place. Add high-quality music you can enjoy up close and personal, and suddenly a great experience becomes unforgettable!" For this small community, that's music to its ears.

While the event continues to be celebrated for raising cultural awareness of classical music, BonB also makes an important economic contribution to the island. Guests tend to stay longer, spend more, and support businesses whose primary focus is tourism, hospitality and transport. For those who don't have time for an extended stay, day packages are now available. Visit [baroqueonbeaver.org](http://baroqueonbeaver.org) for ticket, travel and accommodation information.



In the meantime, as locals and tourists gather under a canopy of stars on a remote island, the sound of music echoing off the water and surrounded by the region's finest musicians, the words of one musician sum up the experiences of most who attend BonB. "This might sound strange," this first-time event musician said, "but I really hope you have me back next year." ■

The Beaver Island Cultural Arts Association was formalized as a 501c3 corporation in 2006. BICAA's mission is "To serve the Beaver Island community by promoting and supporting the cultural arts, including the annual Baroque on Beaver Festival." For information about BICAA, please visit the website at [bicaa.org](http://bicaa.org) or by calling 888-511-5189.



Jack O'Malley

The 2017 festival is July 28 through August 6.



## «« Where In Michigan Is This?

Identify the correct location of the photo on the left by August 10 and be entered into a drawing to win a \$50 electric bill credit. Enter your guess at [countrylines.com](http://countrylines.com) or send by mail to: Country Lines Mystery Photo, 201 Townsend St., Suite 900, Lansing, MI 48933. Include the name on your account, address, phone number, and the name of your co-op.

Our Mystery Photo Contest winner from the May 2017 issue is Paul Morningstar, a Midwest Energy Cooperative member, who correctly identified the photo as the annual Harbor Beach BiYakAthon (bike, run, kayak) at Lincoln Memorial Park.

Winners are announced in the following issues of *Country Lines*: January, March, May, July/August, September and November/December.



May Photo



AMERICAN METAL ROOFS President, Frank Farmer



“Your new roof, from purchase through installation, should be an outstanding experience...”

I have been selling home improvements across Michigan since 1986. Over the years, one thing always worried me about what I saw in my customer's eyes - no matter what I said or did, deep down, I could tell that many of them just didn't trust me.

**And I understood that lack of trust.**

After all, home improvement companies have a long history of deceptive practices, shoddy workmanship and spineless warranties and I was just another salesman from another home improvement company who might be there to rip them off.

**I knew things had to change.**

So, in the winter of 1999, I sat down to plan the perfect home improvement experience - *from the homeowners perspective*. Armed with a cup of good coffee and a legal pad, I went to work. Several hours and several pages later, the plan for American Metal Roofs was born.

**The Result:** The best roofing product, installed by skilled craftsmen backed by warranties with real teeth. I believe that's what every homeowner deserves. If you agree, let's get together and talk about a beautiful, permanent American Metal Roof for your home.

**You deserve nothing less.**

VISIT OUR SHOWROOMS:

FLINT - 6140 Taylor Drive • CHARLOTTE - 1875 Lansing Road

Call Today! 844.638.2576 844.METAL.ROOFS

Read Customer Stories and Watch the Video at:

**AmericanMetalRoofs.com**

See Dozens of Pictures • Enter to Win a Metal Roof • Request a Quote




**ORDER IN THE MONTH OF JULY AND RECEIVE 2 UPGRADES WORTH UP TO \$7,500!!!**


Call For More Details: 844.METAL.ROOFS 844.638.2576

**ASK ABOUT OUR SHOWCASE HOME DISCOUNT!**



Your Touchstone Energy® Cooperative 

[gtlakes.com](http://gtlakes.com)

 [facebook.com/greatlakesenergy](https://facebook.com/greatlakesenergy)

## EVERY MEMBER HAS A VOICE. TOGETHER THEY WORK IN HARMONY.

Every electric co-op member has a say in what's best for the community. Power to the people, from the people. Doesn't that sound good? Learn more about your Great Lakes Energy board of directors and the election process at [gtlakes.com](http://gtlakes.com).

[GTLAKES.COM](http://GTLAKES.COM)



Your Touchstone Energy® Cooperatives 