

---

# MICHIGAN

---

# COUNTRY LINES

Great Lakes Energy Cooperative



Free Energy  
Seminars

---

Trustream  
Fiber Internet

---

Director Election  
Results

## BRINGING SPIRITS HOME

---

Iron Fish Distillery  
Embraces Its Roots

Harness the power of the sun...

...by using the Earth.



### Geothermal gives you the freedom to focus on life

WaterFurnace geothermal systems provide reliable operation 24 hours a day, 7 days a week, 365 days a year—rain or shine, day or night, windy or not. They use the stored solar energy in the ground to provide your family luxurious comfort and incredible savings. In fact, it's the only HVAC system that'll pay you back—and with the renewed 30% federal tax credit<sup>1</sup>, there's never been a better time to switch to the Reliable Renewable. Contact your local WaterFurnace dealer today.



visit us at [waterfurnace.com/Reliable](http://waterfurnace.com/Reliable)



**Bad Axe**  
B & D Htg  
(989) 269-5280  
bdheating.com

**Berrien Springs**  
WaterFurnace Michiana  
(269) 473-5667  
gogreenmichgeothermal.com

**Big Rapids**  
Stratz Htg & Clg, Inc.  
(231) 796-3717  
stratzgeocomfort.com

**Caro**  
AllTemp Comfort, Inc.  
(866) 844-HEAT (4328)  
geo4less.com

**Clifford**  
Orton Refrig & Htg  
(989) 761-7691  
sanduskygeothermal.com

**Hart/Ludington**  
Adams Htg & Clg  
(231) 873-2665  
adamsheatingcooling.com

**Indian River**  
M & M Plmb & Htg  
(231) 238-7201  
mm-plumbing.com

**Kalkaska**  
Kalkaska Plmb & Htg  
(231) 258-3588  
kalkaskageothermal.net

**Michigan Center**  
Comfort 1/Aire Serv of  
Southern Michigan  
(517) 764-1500  
comfort1.net/geothermal

**Mt Pleasant**  
Walton Htg & Clg  
(989) 772-4822  
waltonheating.com

**Muskegon**  
Adams Htg & Clg  
(231) 873-2665  
adamsheatingcooling.com

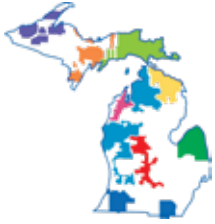
Kiessel Geothermal Htg & Clg  
(231) 747-7509  
kiesselsgeo.com

**Portland**  
ESI Htg & Clg  
(517) 647-6906  
esiheating.com

**Sunfield**  
Mark Woodman  
Plmb & Htg  
(517) 886-1138  
mwphonline.com

**Traverse City**  
D & W Mechanical  
(231) 941-1215  
dwgeothermal.com





Michigan's Electric Cooperatives  
[countrylines.com](http://countrylines.com)

**Executive Editor:** Casey Clark

**Editor:** Christine Dorr

**Copy Editor:** Heidi Spencer

**Design and Layout:**  
Karreen Bird

**Publisher:**  
Michigan Electric  
Cooperative Association

*Michigan Country Lines*, USPS-591-710, is published monthly, except August and December, with periodicals postage paid at Lansing, Mich., and additional offices. It is the official publication of the Michigan Electric Cooperative Association, 201 Townsend St., Suite 900, Lansing, MI 48933.

**Subscriptions** are authorized for members of Alger Delta, Cherryland, Great Lakes, HomeWorks Tri-County, Midwest Energy & Communications, Ontonagon, Presque Isle, and Thumb electric cooperatives by their boards of directors.

**POSTMASTER:** SEND ALL UAA TO CFS.

Association officers are **Robert Kran**, Great Lakes Energy, chairman; **Mark Kappler**, HomeWorks Tri-County Electric, vice chairman; and **Eric Baker**, Wolverine Power Cooperative, secretary-treasurer. **Craig Borr** is president and CEO.

**CONTACT US/LETTERS TO EDITOR:**  
*Michigan Country Lines*  
201 Townsend St., Suite 900  
Lansing, MI 48933  
248-534-7358  
[editor@countrylines.com](mailto:editor@countrylines.com)  
[countrylines.com](http://countrylines.com)

 [facebook.com/  
michigancountrylines](https://www.facebook.com/michigancountrylines)

**CHANGE OF ADDRESS:**

Please notify your electric cooperative. See page 4 for contact information.

The appearance of advertising does not constitute an endorsement of the products or services advertised.

# In This Issue

September 2018 // Vol. 38, No. 8



## ON THE COVER

Earth-friendly Iron Fish Distillery has won 10 national awards for their spirits since launching their company just 18 months ago. Read more about Iron Fish's mission and how they got their start on page 14.

## 6 SAFETY

**Carbon Monoxide Causes  
And Prevention**

## 10 MI CO-OP KITCHEN

**Shake Things Up With Easy-To-Make  
Cocktails**

Christin McKamey & Our Readers

**Iron Fish Distillery Shares Their  
Salted Maple Old Fashioned Recipe**

[Enter Our Recipe Contest And Win A \\$50 Bill Credit!](#)

## 14 FEATURE

**Bringing Spirits Home: Iron Fish  
Distillery Embraces Its Roots**

Rob Marsh

## 18 MI CO-OP COMMUNITY

**Best Of Michigan: Best Cider Mills**  
When the air turns chilly, check out these fall favorite cider mills to stay warm!

[Guess Our New Mystery Photo And Win A \\$50 Bill Credit!](#)

Win \$150 for stories published.

## Guest Column

*Country Lines* invites members to submit stories.

### Guidelines

1. Approximately 350 words
2. Digital photos must be at least 600 KB
3. Submit your guest column at [countrylines.com](http://countrylines.com) under the MI Co-op Community tab

## 2018 International Project Postponed

The Bolivia electrification project featured in previous issues of *Michigan Country Lines* magazine has encountered an unexpected setback. Due to unforeseen in-country circumstances, the project will not be completed this year as planned. Michigan's electric co-ops are evaluating other potential international outreach opportunities.

A crew attaches fiber cable to utility poles to enable Truestream fiber internet for Great Lakes Energy members. The first residents to receive the service when it becomes available later this year will be Great Lakes Energy members in parts of Emmet and Charlevoix counties. Visit [jointruestream.com](http://jointruestream.com) for more information.



## Board of Directors

**Mark Carson** *Chairman, District 2*  
01950 Anderson Rd., Boyne City, MI 49712  
231-675-0561 • [mcarson@glenergy.com](mailto:mcarson@glenergy.com)

**John LaForge** *Vice-Chairman, District 9*  
7363 Walters Rd., Delton, MI 49046  
269-623-2284 • [jlaforge@glenergy.com](mailto:jlaforge@glenergy.com)

**Paul Schemanski** *Secretary, District 1*  
5974 Stolt Rd., Petoskey, MI 49770  
231-439-9079 • [paul.schemanski@glenergy.com](mailto:paul.schemanski@glenergy.com)

**Larry Monshor** *Treasurer, District 4*  
1541 Thumm Rd., Gaylord, MI 49735  
989-705-1778 • [lmonshor@glenergy.com](mailto:lmonshor@glenergy.com)

**Tim Brechon** *Director, District 8*  
22322 220th Ave., Paris, MI 49338  
630-379-6218 • [tbrechon@glenergy.com](mailto:tbrechon@glenergy.com)

**Paul Byl** *Director, District 7*  
9941 W. Buchanan Rd., Shelby, MI 49455  
231-861-5911 • [pbyl@glenergy.com](mailto:pbyl@glenergy.com)

**Richard Evans** *Director, District 3*  
11195 Essex Rd., Ellsworth, MI 49729  
231-883-3146 • [revans@glenergy.com](mailto:revans@glenergy.com)

**Dale Farrier** *Director, District 5*  
2261 Wheeler Lake Rd. NE, Kalkaska, MI 49646  
231-564-0853 • [dfarrier@glenergy.com](mailto:dfarrier@glenergy.com)

**Robert Kran** *Director, District 6*  
7380 N. Tuttle Rd., Free Soil, MI 49411  
231-464-5889 • [bkran@glenergy.com](mailto:bkran@glenergy.com)

**President/CEO: Bill Scott**  
888-485-2537

**Communications**  
**Director/Editor: Dave Guzniczak**  
231-487-1316  
[dguz@glenergy.com](mailto:dguz@glenergy.com)

**Boyne City Headquarters**  
1323 Boyne Ave., P.O. Box 70  
Boyne City, MI 49712  
**Hours:** 8 a.m.–4:30 p.m. M–F  
**Phone:** 888-485-2537  
**Email:** [glenergy@glenergy.com](mailto:glenergy@glenergy.com)

**To report an outage, call:**  
**1-888-485-2537**

**gtlakes.com**

**Change of Address:**  
888-485-2537, ext. 8924

Great Lakes Energy is an equal opportunity provider and employer.

 [facebook.com/greatlakesenergy](https://facebook.com/greatlakesenergy)



## Excitement Is In The Air!

**Bill Scott**, Great Lakes Energy President/CEO

Excitement is literally in the air at Great Lakes Energy. Look up and you will see crews stringing fiber cable to our utility poles in Emmet County. They're bringing Truestream, our new fiber internet service, to GLE members in our Petoskey service area.

The Petoskey service district includes most of Emmet and small parts of Charlevoix and Cheboygan counties (see map on page 5).

Select members in this district will be eligible for Truestream as early as this fall. The service will first become available to a group of approximately 700 members with overhead service along the main fiber line. Service to other areas will branch off from this main line and become available in 2019 and 2020.

Installation of the service into homes and businesses will be done by GLE installation technicians who will provide the service you expect from your co-op.

We expect the first phase of the project to be successful and lead to expansion of the service to members in our other service districts. Truestream is a 100 percent wholly-owned, for-profit subsidiary of Great Lakes Energy. In the longer term, profits expected from the new venture could be used to offset costs of electric service and stabilize rates or be returned to members as capital credit refunds.

Even if you're not in the Petoskey service district, you can still share in the excitement by visiting our new website, [jointruestream.com](http://jointruestream.com).

*“We expect the first phase of the project to be successful and lead to expansion of the service to members in our other service districts.”*

Please register on the site if you would like to see Truestream come to your neighborhood. During the registration process, you will learn about the appealing price packages being offered and much more about this exciting new service.

Most importantly, your registration will help us gauge member interest and better determine where Truestream will go next. Member demand will be one of the important deciding factors in our expansion plans in the years ahead.

There are also ideas on the website for how to get involved in rallying support for Truestream among your neighbors and friends. Receive updates on new developments as well.

**Visit [jointruestream.com](http://jointruestream.com) and register your interest today.**



Fiber internet service is first coming to GLE members in the shaded areas above, which includes most of Emmet County and small parts of Charlevoix and Cheboygan counties. Service to Beaver Island will be a form of high-speed internet yet to be determined. Expansion into other parts of the GLE service area is planned for future years.



## Three Incumbents Re-elected



District 1—**Paul Schemanski**



District 2—**Mark Carson**



District 7—**Paul Byl**

Incumbents Paul Schemanski of Petoskey, Mark Carson of Boyne City and Paul Byl of Shelby were recently re-elected by Great Lakes Energy members in their district to three-year terms on the electric cooperative’s board of directors.

Carson and Byl each defeated challengers in their district to earn a position on the board. Schemanski, who works in healthcare technology at McLaren Northern Michigan Hospital, faced no challengers in voting District 1. Carson (District 2) is store manager for the Gordon Food Service store in Gaylord. Byl (District 7) is a farmer.

Great Lakes Energy members in Districts 1, 2 and 7 received their mail-in ballot in the July/August issue of *Michigan Country Lines*. Voters had to return their ballots to a private CPA firm by Aug. 16 and winners were announced Aug. 22 at the cooperative’s annual business meeting in Boyne City.

### Election Results Summary

#### District 1:

Paul Schemanski, Petoskey - *Winner* . . . . 246

#### District 2:

Mark Carson, Boyne City - *Winner* . . . . . 326

Robin Lee Berry, Boyne City . . . . . 182

Larry Failing, Boyne City . . . . . 121

#### District 7:

Paul Byl, Shelby - *Winner* . . . . . 317

Anne Pawli, Montague . . . . . 279

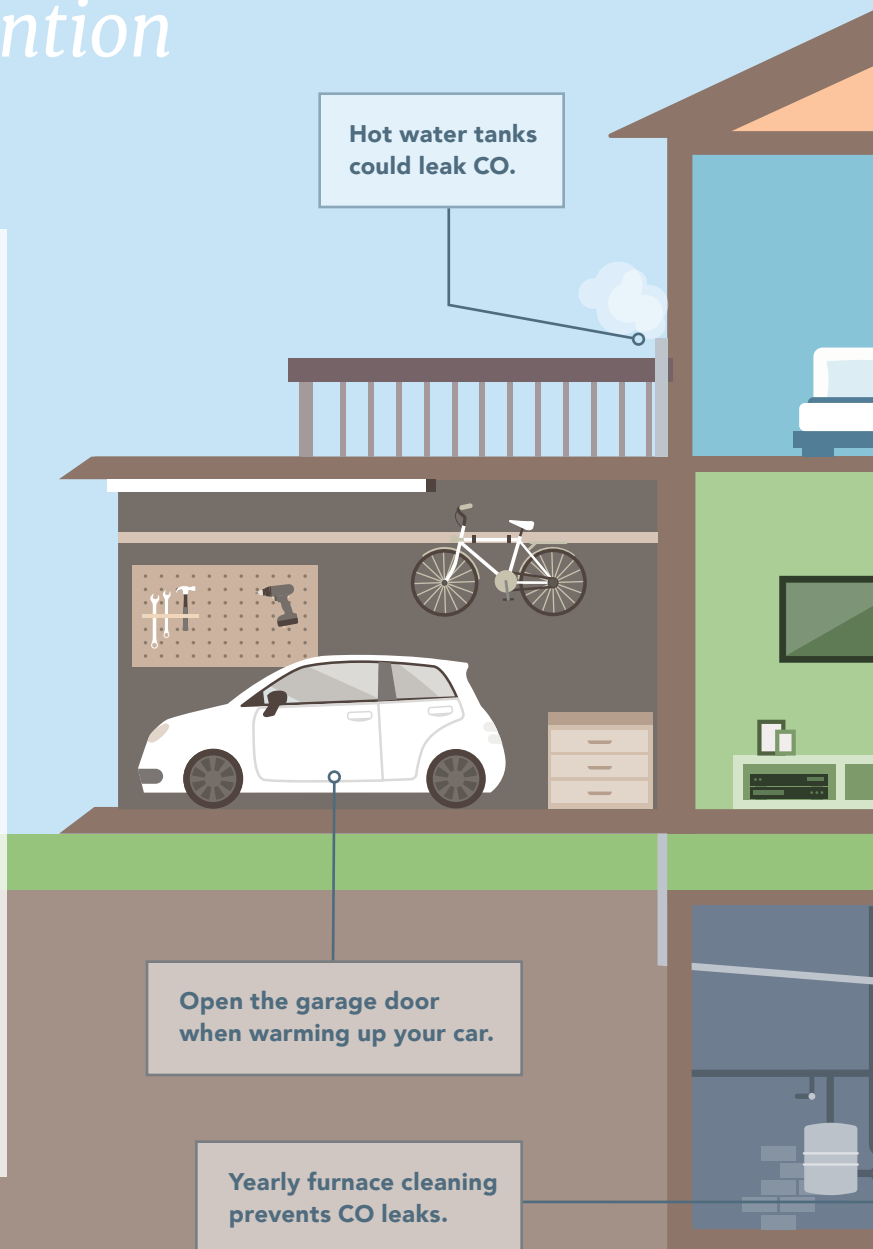
*Thank you to all the Great Lakes Energy members who participated in this year’s election.*

# CARBON MONOXIDE

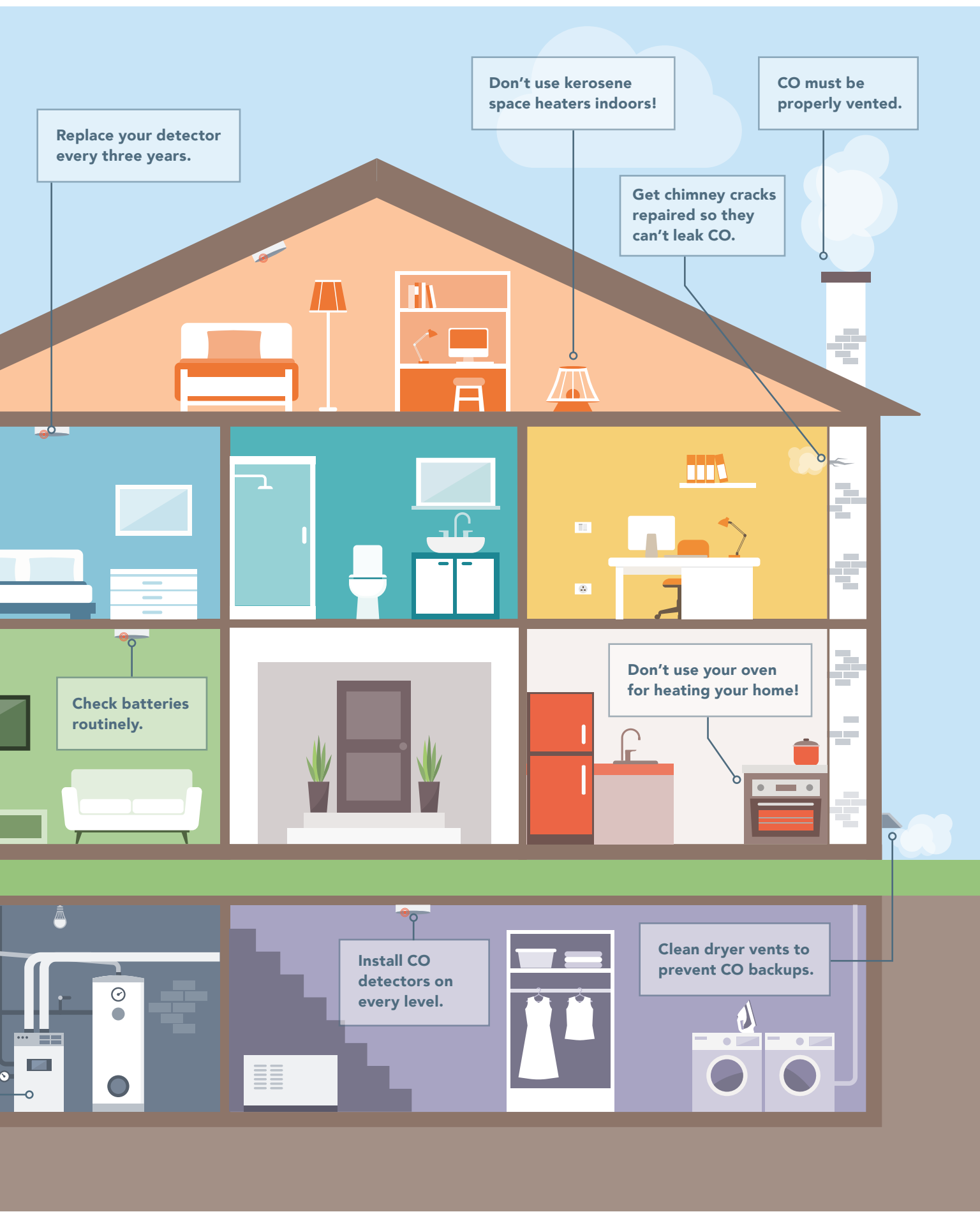
## Causes and Prevention

### CARBON MONOXIDE FACTS

- CO poisoning is responsible for 20,000 ER visits every year.
- ER visits for CO poisoning are highest in the midwestern states.
- CO is a colorless, odorless gas which makes it more dangerous since it is invisible to the senses.
- Symptoms of CO poisoning include: nausea, vomiting, headache, dizziness, confusion, chest pain, and decreased level of consciousness.
- Children are more vulnerable to the poisonous effects of CO.







Replace your detector every three years.

Don't use kerosene space heaters indoors!

CO must be properly vented.

Get chimney cracks repaired so they can't leak CO.

Check batteries routinely.

Don't use your oven for heating your home!

Install CO detectors on every level.

Clean dryer vents to prevent CO backups.

# Get Cozy And Save Energy

Cooler weather is on the way. Now is the time to take action and upgrade your outdated, inefficient furnace. Doing so will help you save energy and money for years to come, and also ensure consistent, evenly-distributed air throughout your home—improving your overall comfort.

Plus, cash incentives are now available from the Energy Optimization program!

## HVAC REBATES

(visit [michigan-energy.org](http://michigan-energy.org) for amounts)

New furnace with ECM blower motor

ECM blower motor replacement

Central Air-source Heat Pump

Mini/Multi-Split Air-Source Heat Pump

Ground Source Heat Pump

Wi-Fi-enabled or smart thermostat

*\*Combo bonus rebates available for purchasing multiple pieces of equipment.*

## What is an ECM Motor?

An electronically commutated motor adjusts operating speeds, ensures optimal airflow, and uses less electricity—saving you energy and money.

If you can't afford to purchase a new furnace, replace your existing blower motor with an ECM to improve efficiency. Since the blower motor uses about 80 percent of the total electricity consumed by the furnace, switching to an energy-saving ECM can make a major impact.

## Heat Pumps: Even More

Efficient heat pumps use electricity to move heat, rather than generate heat. Air-source heat pumps are the most common, and can reduce electricity use for heating by up to 50 percent. For homes without ducts, mini-split heat pumps are available.

Geothermal (ground-source) heat pumps achieve even higher efficiencies by transferring heat between your home and the ground. They can cost up to 75 percent less to operate compared to conventional heating or cooling methods. Consult your HVAC contractor for recommendations.

## Buy a New Thermostat

Wi-Fi-enabled and smart thermostats help control energy costs by allowing you to program and adjust temperatures remotely, 24/7. Smart thermostats can program themselves as they "learn" your behavior patterns and desired temperatures.

Visit [michigan-energy.org](http://michigan-energy.org) or call **877-296-4319** for additional energy-saving information and incentives.

## SAVE ON HEATING COSTS

Want to reduce energy use, save money, and enjoy a more comfortable home? CASH INCENTIVES are available now to help you invest in equipment upgrades:

- High-efficiency furnace
- ECM blower motor
- Air-source or ground-source heat pump
- Smart thermostat
- ...and more!

## VIEW ALL INCENTIVE OFFERS ONLINE!

ONLINE: [michigan-energy.org](http://michigan-energy.org)

PHONE: **877.296.4319**



Energy Optimization programs and incentives are applicable to Michigan electric service locations only. Other restrictions may apply. For a complete list of participating utilities, visit [michigan-energy.org](http://michigan-energy.org).

get cozy





# GLE Photo Contest

## Fall Colors

1. Charlevoix Lighthouse in the Fall—*Sheila Melke, Charlevoix*
2. Up North Fall Beauty—*Debra DeYoung, Idlewild*
3. The Lake Up North—*Tara Brouwer, Zeeland*
4. Glorious Fall Colors at Treetops Resort—*Michele Lemon, Johannesburg*
5. Rainbow over island at Big Bass Lake in Irons—*Denise Brewer, Irons*
6. Days Gone By—*Mary Handwerk, Petoskey*



### Submit Your "Celebrations" Photo!

Each month members can submit photos on Facebook or our website for our annual photo contest. The photo with the most votes on Facebook is published here along with other selections.

Enter to win a  
**\$200**  
energy bill  
credit!

**Our September contest theme is Celebrations. Photos can be submitted by September 20 to be featured in the November/December issue.**

### How To Enter:

Visit [Facebook.com/greatlakesenergy](https://www.facebook.com/greatlakesenergy) and click "Photo Contest" from the menu tabs. Not on Facebook? You can also enter the contest at [gtlakes.com/photocontest/](https://www.gtlakes.com/photocontest/). Make sure to vote and encourage others to vote for you, too. The photo receiving the most votes from our online and Facebook contest will be printed in an issue of *Michigan Country Lines* along with some of our other favorites. All photos printed in the magazine throughout the year will be entered to win a \$200 bill credit in December 2018.



# Cocktails And Drinks

Shake things up with these easy-to-make, boozy drinks.

Photos—Robert Bruce Photography

## Mexican Sangria (pictured)

Mindy Aves, HomeWorks Tri-County

- 1 cup lime juice
- 1 cup sugar
- 2 bottles White Zinfandel wine
- 2 cups fresh orange juice
- ½ cup triple sec
- ½ cup tequila
- 2 cups frozen, seedless grapes (red, green, and purple)
- 2 cups sliced oranges or nectarines
- 1 cup sliced limes

Mix lime juice and sugar. Add wine, orange juice, triple sec and tequila. Chill until cold. Add fruit (may not need as much as called for.)



Watch a video of this recipe at  
[micoopkitchen.com/videos](http://micoopkitchen.com/videos)



## French Blonde

Jan Updike, Cherryland

- 1 cup ruby red grapefruit juice
- 1 cup Lillet Blanc (available at larger liquor or wine stores)
- ½ cup gin (or less to make it less alcoholic)
- ¼ cup St. Germain elderflower liqueur
- 4 dashes of lime or lemon bitters
- garnish with a slice of grapefruit or another citrus

Mix all ingredients in a suitably sized pitcher. Chill if needed. Serve in a martini glass. Garnish with a slice of grapefruit or another citrus. Makes approximately 3–4 drinks.



## Celery Sipper

Jodi Moelker, Great Lakes Energy

- 2 cups chopped celery, including leaves
- 1½ cups sugar
- 1 cup water
- 1 tablespoon celery seeds



In a medium bowl, stir together the chopped celery, sugar, water and celery seeds. Let stand, stirring occasionally until sugar dissolves. Chill, covered, 8 hours or overnight. Strain through a fine-mesh sieve. Transfer syrup to a lidded jar or bottle and store in the refrigerator for up to two weeks.

For an alcoholic version, throw in an ounce or two of gin. For a non-alcoholic version, use celery sipper liquid to flavor soda water, adding a squeeze of lemon if desired. Serve immediately and enjoy!



## Fisherman's Punch

Arline Welty, Ontonagon REA

- 1 30-ounce bottle of 100% pure peach juice (no added sugar)
- 1 bottle (750 mL) dark rum
- 1 1-pint bottle (375 mL) brandy
- 5 ounces freshly squeezed lime juice
- 5 ounces freshly squeezed lemon juice

**Punch:** Chill the peach juice, rum and brandy. Squeeze limes and lemons. Pour all ingredients into a large plastic or non-reactive jug. Stir well to combine. Cover and place jug in the refrigerator to chill, at least 4 hours. If serving in a punch bowl, pour into a bowl over a large block of ice. Garnish with lime or lemon slices.

**Ice Block (Optional):** Wash and dry a rectangular cardboard milk carton. Cut off the top to create a rectangular mold. Pour filtered water to fill to 25 percent and add thinly sliced limes on top. Let freeze, and repeat process of adding water and limes, and freezing. This creates a block of ice with limes throughout, which looks nice in the punch bowl.



**Holiday Favorites:** due October 1  
**Pasta Perfect:** due November 1

Submit your favorite recipe for a chance to win a \$50 bill credit and have your recipe featured in *Country Lines*.

Go to [microopkitchen.com](http://microopkitchen.com) for more information and to register.

Enter to win a  
**\$50**  
energy bill  
credit!

## FEATURED GUEST CHEF

Enjoy this creative cocktail from Iron Fish Distillery. Their true passion is to offer customers the craft of soil-to-spirit distilling from a family business that cares about their employees, community and the living land. Every step of the process—from growing and harvesting non-GMO grain to cultivating native yeast, milling, mashing, fermenting, distilling, aging, and bottling—is done by hand at their distillery. Cheers!



## Salted Maple Old Fashioned

- **Glass:** Rocks
- ½ Bar Spoon (¼ ounce) of maple syrup
- 2-3 dashes of aromatic bitters
- 2 ounces maple bourbon
- **Garnish:** 5 salt flakes and an orange twist

Build ingredients in glass, combine with ice, and stir until chilled. This drink also tastes great with Iron Fish Experimental Barrel Finished Gin!

## Bourbon Whiskey Finished In Maple Syrup Barrels

**Bourbon Whiskey:** Iron Fish Distillery has some delicious local maple syrup, from the Griner Family Sugar Bush, that was aged in used whiskey barrels for months. Those whiskey barrels were then filled with a high rye bourbon and left to marry, resulting in a subtly sweet and deep flavor.

**Black Label Bourbon:** As the leaves began to fall, and while waiting for their own Iron Fish distilled whiskey to reach its prime, distillery staff came upon this spirit—a blend of corn, rye and malted barley in fired American oak barrels. The staff fell for it and gave it a trace of maple by finishing the spirit in aged whiskey barrels steeped in maple syrup. Settle in and enjoy this unique, thoughtful and distinct Bourbon—the beauty is in the contrast.

Both the Bourbon Whiskey and the Black Label Bourbon are available for purchase at Iron Fish Distillery.

Read the full story about Iron Fish Distillery, on page 14, and find this recipe and others at [microopkitchen.com](http://microopkitchen.com).





# Join People Fund Plus



## A Growing Experience For Students

The Growing Future Agriculture Business 4-H program in Osceola County gives students the opportunity to grow and sell their own vegetables from a greenhouse near Evert High School. They also get a share of the profits earned from their sales to community members and local businesses. Weeding the carrots (from left) are volunteer leader Doug Rueffer, Katie Rueffer and Amanda Johnston. The group received a \$3,000 People Fund grant to help pay for refrigeration to keep their produce fresh before it goes to market.

Now you can make a greater impact in your local community with People Fund PLUS.

Choose a People Fund donation level in addition to your rounded-up amount. Your donations are awarded in the form of grants to local community nonprofit groups.

All People Fund contributors have the chance to win a **\$100 bill credit** twice per year. In 2017 the People Fund awarded \$216,155 in grants to local nonprofits. Visit [gtlakes.com](http://gtlakes.com) to see the list of grant recipients in your area.

### JOIN TODAY!

Working together, we can help enhance our local communities and meet the needs of so many.

#### EXAMPLE:

**With People Fund:**  
Bill Amount \$65.42 + \$.58  
for People Fund = \$66.00

**With People Fund PLUS:**  
Bill Amount \$65.42 +  
\$.58 for People Fund +  
\$2.00 for PLUS = \$68.00

• Call 888-GT-LAKES or visit [gtlakes.com/peoplefundenroll](http://gtlakes.com/peoplefundenroll) to join. •

# Free Energy Seminars



Two October events offer members the opportunity to learn about energy savings.

Learn about home heating and cooling options with geothermal and air-source heat pumps and Energy Optimization programs that offer incentives to help co-op members save energy. They include rebates for the purchase of furnaces with variable speed blower motors, heat pump water heaters, Wi-Fi-enabled or smart occupancy-sensing thermostats, free online audits and more.

Local heating and cooling companies and Great Lakes Energy staff members will be on hand to answer questions related to heat pumps and other energy efficiency products and services.

Door prizes will be awarded and all attendees will receive an energy saving item. Join us for this interactive and informative event.

## Register Now And Attend Either Session:

- Saturday, Oct. 6, at the GLE Boyne City office
- Saturday, Oct. 13, at the GLE Newaygo office

**Both seminars will be from 10 a.m. to noon.**

---

Space is limited, so please register by calling 1-888-485-2537, ext. 8958, or email: [events@glenergy.com](mailto:events@glenergy.com).



A wary Great Lakes Energy member alerted us of a scam call he recently received. His caller ID said GREAT LAKES ENERGY, but it was a trick. The scammers threatened to shut off his power if payment wasn't made.

Great Lakes Energy members are reminded to be aware of impostors who may call them claiming to be from Great Lakes Energy.

Any GLE member who receives a call from someone claiming to be from Great Lakes Energy and feels pressured for immediate payment or personal information is advised to hang up the phone and call their electric cooperative. Great Lakes Energy members can call 1-888-485-2537 and speak to any GLE member service representative. Co-op members, or any consumer, should never give out personal information, including financial account numbers or social security numbers, over the phone or internet to someone they do not know.

Members should also report the incident to local law enforcement authorities.





# BRINGING SPIRITS HOME

## Iron Fish Distillery Embraces Its Roots

By  
Rob  
Marsh

Every year Great Lakes steelhead return to their home in the Betsie River, running inland throughout northwest Michigan. Like these tenacious fish, the proprietors of Cherryland member Iron Fish Distillery in Thompsonville are returning the heritage of farm-distilled spirits back to the region.

Iron Fish is the only small-batch farm distillery in Michigan, but they are far from the first. "This area has a history of distilling small-batch spirits," said Richard Anderson, co-owner of Iron Fish. "Before Prohibition, there were plenty of people in this area distilling their own spirits on their farms."

These farms were a memory for Anderson's wife, Sarah, and her sister, Heidi, when they were young, spending their

summers visiting family in Benzonia. Heidi and her husband, David, later bought a seasonal home on the Betsie River, near the 120-acre farm that would later become the home of Iron Fish.

"It was a second-generation family farm that had been abandoned for a decade or so," said Anderson. "David and Heidi bought the land to save the farmhouse and barn and preserve the farm from being parceled up and sold."

While they enjoyed spirits, Anderson and his family didn't have plans to start a second career, let alone open a distillery on the property. It took a birthday trip to Scotland to give them the push they needed. "Touring distilleries in Islay, Scotland, we came across a farm distillery which really fed our passion for returning to northern Michigan to start our own farm distillery. That was when we began to take this idea that we could distill spirits seriously."

Within three years of returning from Scotland, Iron Fish became a reality.

From the beginning, Anderson quickly realized that they were doing something special. "Last year over Labor Day weekend, we just opened our doors. We didn't have the time to do a soft opening," said Anderson. "And within days of opening the tasting room, we sold out of our vodka!"



To date, Iron Fish has won over 10 national awards for their spirits, become the vodka provider for premium seating at Ford Field in Detroit, and started distributing their products to over 600 Michigan locations and throughout Chicago, Illinois. "It's going better than we thought," chuckled Anderson.

Iron Fish embraces their roots and takes full advantage of their farm's natural resources, using the property's grain for distilling spirits, growing their own cocktail garnishes in a bartender's garden, and supplying mash as cattle feed for local farmers. "We are a full ecosystem here. It's been our commitment to create a sustainable, working landscape."

This commitment to the land extends to their neighbors as well. In addition to hosting community and charitable events, Iron Fish partners with local farms and uses their products in Iron Fish spirits. "When someone drinks our white rum, they taste honey from Sleeping Bear Farms. And when someone drinks our gin, they taste sprigs of Concolor Fir from Antioch Tree Farm. We are perfecting the craft and art of distilling while giving back to our community."

Like the schools of steelhead working their way up the river, the people at Iron Fish Distillery are determined to continue the northwest Michigan tradition of distilling. All the while, they are supporting the land and the community who depends on it. 🐟



Iron Fish's four family partners, staff, and distribution representative gather to see their first pallet of spirits placed into statewide distribution. Iron Fish spirits can be found in over 600 Michigan locations as well as throughout Chicago, Illinois.



For more information about Iron Fish Distillery and to access a special coupon code for a tour of the facility, visit [ironfishdistillery.com](http://ironfishdistillery.com).

The coupon code is good for 50 percent off the cost of a tour through 2018, normally \$10. Enter CODE: **MCL2018** on the "Tour" tab of their website and complete the registration, by selecting the date, time and number of people.

Visit [ironfishdistillery.com](http://ironfishdistillery.com) to book a tour.

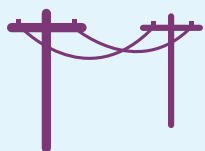


Visit [countrylines.com](http://countrylines.com) to learn more about Iron Fish Distillery and the craft beverage scene in Michigan on a special episode of the Co-op Energy Talk podcast, hosted by Cherryland Electric Cooperative.



# We're Keeping the **Lights On**

Reliable service means fewer power outages. We're making improvements to provide you with better service.



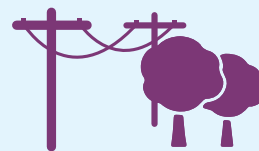
More Power Line Protection Devices



New Technology



Major Power Line Improvements



Aggressive Tree Maintenance

## What hinders our progress?



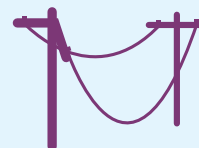
Storms



Man-made Accidents

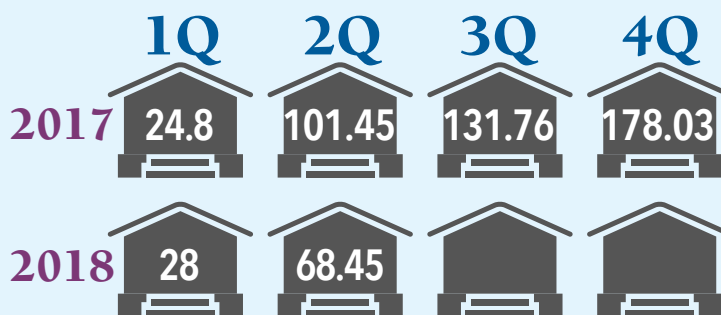


Animals



Equipment Failure

## AVERAGE OUTAGE MINUTES YEARLY COMPARISON



Your Touchstone Energy® Cooperative 

Looking Out for You

OUR YEARLY GOAL:  
UNDER 166.3 MINUTES



## SUBMIT A NOMINATION TODAY!

*Michigan Country Lines* is on the hunt for entrepreneurial movers and shakers to showcase in our March 2019 magazine. We know co-op members are awesome and there is no shortage of pioneers, innovators and leaders in our service territory. Featured entrepreneurial endeavors can be small start-ups, large operations or anything in between.

**If you know a friend, neighbor or coworker we should consider, nominate them by December 31 at [countrylines.com](http://countrylines.com).**

**Self-nominations are accepted.**

### **Notice to Members Of Great Lakes Energy Cooperative**

#### **Case No. U-16593 2017 Renewable Energy Plan Annual Report Summary**

Michigan law requires all Michigan electric utilities to get approximately two percent of their power supply from renewable sources by 2012 and increasing to 10 percent by 2015.

Under this requirement, Great Lakes Energy Cooperative submits an Annual Report to the MPSC regarding its Renewable Energy Plan. In 2017, Great Lakes acquired a total of 238,232 renewable energy credits and 3592 incentive credits. All credit transfers were directed through Great Lakes' wholesale power supplier, Wolverine Power Supply Cooperative, Inc. Wolverine will continue to generate renewable energy and bank unused renewable energy credits for future use and comply with statutory renewable portfolio standard requirements on behalf of all of its members.

A full copy of the cooperative's Renewable Energy Plan Annual Report that was filed with the MPSC is available on the cooperative's website at [gtlakes.com](http://gtlakes.com) or by request at any of the cooperative's offices.

### **Public Act 295 as amended by Public Act 342: The Clean Renewable And Efficient Energy Act**

#### **2017 Annual Energy Waste Reduction Report Great Lakes Energy Cooperative MPSC Case Number U-18275**

During 2017, Great Lakes Energy Cooperative administered its Energy Waste Reduction (EWR) plan through the Michigan Electric Cooperative Collaborative in order to comply with PA-295. Previously, Great Lakes, through the Collaborative, submitted its EWR plan with the MPSC. This EWR plan was approved by the MPSC. The Collaborative implemented the EWR Plan in 2017.

Overall Great Lakes achieved a goal at approximately 109 percent savings. The full report can be obtained at your cooperative's headquarters.



Guess this photo and enter to win a \$50 energy bill credit!



## Where In Michigan Is This?

Identify the correct location of the photo above by September 20 and be entered into a drawing to win a \$50 electric bill credit. Enter your guess at [countrylines.com](http://countrylines.com) or send by mail to: *Country Lines* Mystery Photo, 201 Townsend St., Suite 900, Lansing, MI 48933. Include the name on your account, address, phone number and the name of your co-op.

Our Mystery Photo Contest winner from the July/August 2018 issue is Kevin Dubord, an Alger Delta Cooperative member, who correctly identified the photo as the Shrine of Bishop Frederick Baraga. He was also known as the Snowshoe Priest who became the first Bishop of the Upper Peninsula and the Apostle of the Great Lakes.

Winners are announced in the following issues of *Country Lines*: January, March, May, July/August, September and November/December.

### July/August 2018



## Best Cider Mills



Between the cider, doughnuts, hayrides and corn mazes, cider mills provide a great day out for families. Enjoy a perfect fall day at one of these awesome cider mills recommended by your fellow co-op members.

### 1 Phillips Orchards & Cider Mill, St. Johns

Phillips Orchards & Cider Mill has the best cider, donuts, Michigan gifts and paintings. It's just about the neatest place to go. —*Marilyn Fitzpatrick, HomeWorks Tri-County*

### 2 VerHage Fruit Farms & Cider Mill, Kalamazoo

VerHage Fruit Farms & Cider Mill is by far THE BEST cider I have ever tasted! There are no preservatives and nothing added except real apples and sometimes other fall fruit. They also have homemade doughnuts, pick your own apples, shopping, music, hayrides, a zip line and more fun for kids at nominal prices. If you haven't been to VerHage Cider Fruit Farms & Cider Mill farm you need to go there! If you have...you already know what I'm talking about...They are open from the spring with all kinds of fruit and fresh baked goods through the holidays in December. —*Sue Gottlieb, Midwest Energy & Communications*

### 3 Klackle Orchards, Greenville

Klackle Orchards has something for everyone. You will not be disappointed by making a trip to Klackle! The donuts and cider are to die for. —*Shelly Dunn, Great Lakes Energy*

### 4 Friske Orchard & Farm Market, Ellsworth

Friske Orchard & Farm Market is a bushel of fun! Families love the outdoor orchard playland and the animal petting zoo, self-guided nature walk, you-pick fruit and festive events—many of which include live music and wagon rides! They also have homemade doughnuts and pies, a fruit stand, Michigan products and so much more! —*Walter Dorr, Presque Isle Electric & Gas*

### 5 Knaebe's Mmmunchy Krunchy Apple Farm & Cider Mill, Rogers City

Knaebe's Mmmunchy Krunchy Apple Farm & Cider Mill is as unique as its name. It's a great place to indulge in all things fall! Plus, [cider mill goers can find] great wood-fired pizza and craft hard cider. —*Gerry Baller, Presque Isle Electric & Gas*



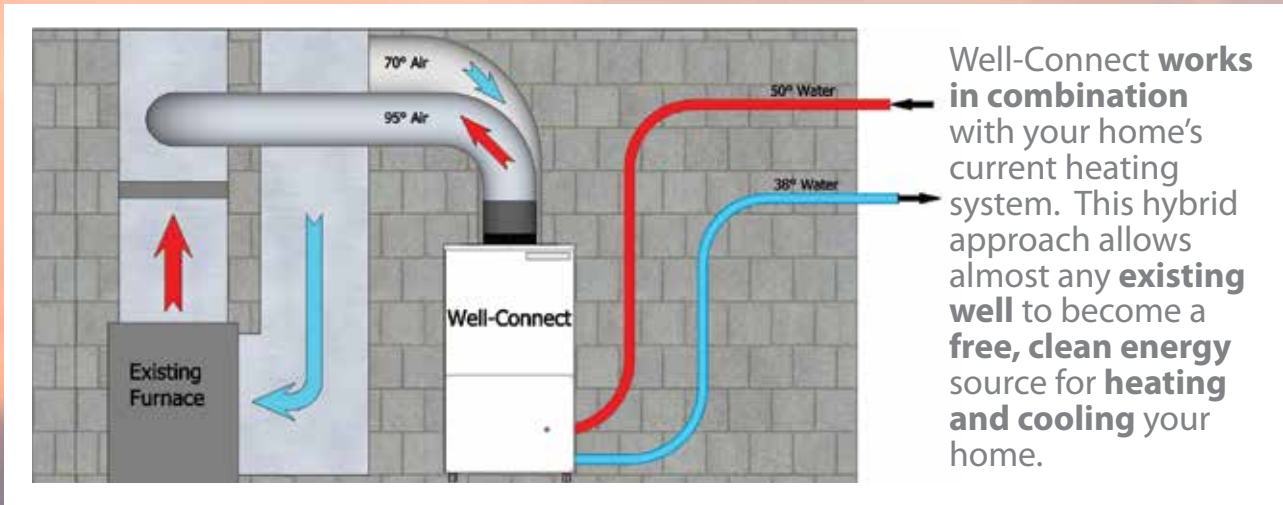
## Best of Michigan

**Up Next:** Share your favorite Michigan snowmobile trails. Help your fellow readers explore some new places this winter. We will publish these trails in our Nov/Dec issue.

Submit your favorites at [countrylines.com](http://countrylines.com) under the MI Co-op Community tab by October 1.

# Making Rural Home Heating Affordable

## 1 Well at a Time



call for a free home site visit




Hybrid Geothermal  
**wellCONNECT**

Add a Well Connect in hours. Heat for half for decades.


989-356-2113 [wellconnectsaves.com](http://wellconnectsaves.com)





Your Touchstone Energy® Cooperative 

[gtlakes.com](http://gtlakes.com)

 [facebook.com/greatlakesenergy](https://facebook.com/greatlakesenergy)

# Say Yes!



## The future is headed to your neighborhood.

Construction has started on Great Lakes Energy's fiber network, Truestream, which will deliver amazing, reliable high-speed internet and unlimited phone services. Get the connection you want and deserve from a company that has served Michigan members with innovation and dependable service for decades. **Say yes to Truestream, powered by Great Lakes Energy.**

**It's up to YOU to help us decide where the network should be built next!**

Pre-register at [jointruestream.com](http://jointruestream.com) today  
or call 1-888-485-2537.

