

MICHIGAN COUNTRY LINES

Presque Isle Electric & Gas Co-op

**2017
Annual
Report**

Pages 12-13

**Meet Your Director
Candidates & Vote**
Pages 4, 5 and 8

**PIE&G Special
Board Meeting**
Page 9

BRINGING SPIRITS HOME

**Iron Fish Distillery
Embraces Its Roots**



Harness the power of the sun...

...by using the Earth.



Geothermal gives you the freedom to focus on life

WaterFurnace geothermal systems provide reliable operation 24 hours a day, 7 days a week, 365 days a year—rain or shine, day or night, windy or not. They use the stored solar energy in the ground to provide your family luxurious comfort and incredible savings. In fact, it's the only HVAC system that'll pay you back—and with the renewed 30% federal tax credit¹, there's never been a better time to switch to the Reliable Renewable. Contact your local WaterFurnace dealer today.



visit us at waterfurnace.com/Reliable



Bad Axe

B & D Htg
(989) 269-5280
bdheating.com

Berrien Springs

WaterFurnace Michiana
(269) 473-5667
gogreenmichgeothermal.com

Big Rapids

Stratz Htg & Clg, Inc.
(231) 796-3717
stratzgeocomfort.com

Caro

AllTemp Comfort, Inc.
(866) 844-HEAT (4328)
geo4less.com

Clifford

Orton Refrig & Htg
(989) 761-7691
sanduskygeothermal.com

Hart/Ludington

Adams Htg & Clg
(231) 873-2665
adamsheatingcooling.com

Indian River

M & M Plmb & Htg
(231) 238-7201
mm-plumbing.com

Kalkaska

Kalkaska Plmb & Htg
(231) 258-3588
kalkaskageothermal.net

Michigan Center

Comfort 1/Aire Serv of
Southern Michigan
(517) 764-1500
comfort1.net/geothermal

Mt Pleasant

Walton Htg & Clg
(989) 772-4822
waltonheating.com

Muskegon

Adams Htg & Clg
(231) 873-2665
adamsheatingcooling.com

Kiessel Geothermal Htg & Clg
(231) 747-7509
kiesselsgeo.com

Portland

ESI Htg & Clg
(517) 647-6906
esiheating.com

Sunfield

Mark Woodman
Plmb & Htg
(517) 886-1138
mwphonline.com

Traverse City

D & W Mechanical
(231) 941-1215
dwgeothermal.com



Michigan's Electric Cooperatives
countrylines.com

Executive Editor: Casey Clark

Editor: Christine Dorr

Copy Editor: Heidi Spencer

Design and Layout:
Karreen Bird

Publisher:
Michigan Electric
Cooperative Association

Michigan Country Lines, USPS-591-710, is published monthly, except August and December, with periodicals postage paid at Lansing, Mich., and additional offices. It is the official publication of the Michigan Electric Cooperative Association, 201 Townsend St., Suite 900, Lansing, MI 48933.

Subscriptions are authorized for members of Alger Delta, Cherryland, Great Lakes, HomeWorks Tri-County, Midwest Energy & Communications, Ontonagon, Presque Isle, and Thumb electric cooperatives by their boards of directors.

POSTMASTER: SEND ALL UAA TO CFS.

Association officers are **Robert Kran**, Great Lakes Energy, chairman; **Mark Kappler**, HomeWorks Tri-County Electric, vice chairman; and **Eric Baker**, Wolverine Power Cooperative, secretary-treasurer. **Craig Borr** is president and CEO.

CONTACT US/LETTERS TO EDITOR:
Michigan Country Lines
201 Townsend St., Suite 900
Lansing, MI 48933
248-534-7358
editor@countrylines.com
countrylines.com

 [facebook.com/
michigancountrylines](https://facebook.com/michigancountrylines)

CHANGE OF ADDRESS:
Please notify your electric
cooperative. See page 4
for contact information.

The appearance of advertising does not
constitute an endorsement of the products
or services advertised.

In This Issue

September 2018 // Vol. 38, No. 8



ON THE COVER

Earth-friendly Iron Fish Distillery has won 10 national awards for their spirits since launching their company just 18 months ago. Read more about Iron Fish's mission and how they got their start on page 14.

6 SAFETY

Carbon Monoxide Causes
And Prevention

10 MI CO-OP KITCHEN

Shake Things Up With Easy-To-Make
Cocktails

Christin McKamey & Our Readers

Iron Fish Distillery Shares Their
Salted Maple Old Fashioned Recipe

[Enter Our Recipe Contest And Win A \\$50 Bill Credit!](#)

14 FEATURE

Bringing Spirits Home: Iron Fish
Distillery Embraces Its Roots

Rob Marsh

18 MI CO-OP COMMUNITY

Best Of Michigan: Best Cider Mills
When the air turns chilly, check
out these fall favorite cider mills to
stay warm!

[Guess Our New Mystery Photo And Win A \\$50 Bill Credit!](#)

[Win \\$150 for stories published.](#)

Guest Column

Country Lines
invites members to
submit stories.

Guidelines

1. Approximately 350 words
2. Digital photos must be at least 600 KB
3. Submit your guest column at countrylines.com under the MI Co-op Community tab

2018 International Project Postponed

The Bolivia electrification project featured in previous issues of *Michigan Country Lines* magazine has encountered an unexpected setback. Due to unforeseen in-country circumstances, the project will not be completed this year as planned. Michigan's electric co-ops are evaluating other potential international outreach opportunities.



Board Of Directors

Charles Arbour

23899 M32 S, Hillman MI 49746
989-657-4358 • Term Expires: 2020

Allan Berg, Vice-Chairman

1117 E. Heythaler Hwy., Rogers City, MI 49779
989-734-0044 • Term Expires 2020

Sandy Borowicz, Secretary

5341 Carlson Rd., Cheboygan, MI 49721
231-627-9220 • Term Expires 2018

John Brown, Chairman

21 W. Devereaux Lake Rd., Indian River, MI 49749
231-625-2099 • Term Expires 2020

Sally Knopf

1849 W. 638 Hwy., Rogers City, MI 49779
989-734-4196 • Term Expires 2018

Kurt Krajniak

7630 Wallace Rd., Alpena, MI 49707
989-884-3037 • Term Expires 2019

Brentt Lucas

15841 Carr Rd., Posen, MI 49776
989-379-4694 • Term Expires 2019

Daryl Peterson, Treasurer

P.O. Box 54, Hillman, MI 49746
989-742-3145 • Term Expires 2018

Raymond Wozniak

6737 State St., Posen, MI 49776
989-766-2498 • Term Expires 2019

President & CEO: Tom Sobeck

tsobeck@pieg.com

Co-op Editor:

Maire Chagnon-Hazelman

Presque Isle Electric & Gas Co-op

19831 M-68 Hwy., P.O. Box 308
Onaway, 49765

Business Office & Billing: **989-733-8515**

Toll-Free: **800-423-6634**

Gas Emergency Toll-Free: **800-655-8565**

pieg.com

2017 CEO Annual Salary: \$155,874

2017 Director Compensation Rate:

- \$750 per regular meeting
- \$200 per special meeting

New memberships in 2017:

- Electric—1,479
- Natural Gas—198

2017 Non-member Revenue—\$136,447



Join us on Facebook.

facebook.com/PIEGCooperative

Most PIE&G natural gas rates and charges are not regulated by the Michigan Public Service Commission.

Presque Isle Electric & Gas Co-op is an equal opportunity provider and employer.

Your Touchstone Energy[®]
Cooperative



MEET YOUR CANDIDATES!

See instructions on the cover wrap of this magazine for voting details.

CHEBOYGAN DISTRICT



Sandy Borowicz
Cheboygan

My husband, Harold, and I have been PIE&G members for over 40 years and are lifelong residents of Cheboygan County.

I have a bachelor's degree in human resource management from Spring Arbor University. I was employed as an account manager by Blue Cross Blue Shield of Michigan for 28 years and worked with many large businesses and government and industry leaders throughout northern Michigan. I currently serve as an ambassador at the Cheboygan Chamber of Commerce, a volunteer usher at the Cheboygan Opera House and also volunteer at my church.

I have appreciated the opportunity to serve on the PIE&G Board for the past four years. I've participated in training to achieve my Credentialed Cooperative Director's Certificate. This experience has deepened my understanding and knowledge of the cooperative. I want to continue to actively serve the people and communities of northeast Michigan and would very much appreciate your vote.



Luanne Thomas
Cheboygan

After graduating from high school, I took several computer programming courses. I worked as a secretary at J.L. Hudson and several other companies. I also worked for American Motors as a secretary and spent 34 years in the auto industry working in traffic, engineering and production control.

I have been visiting the area my entire life, and after retiring, I moved to Cheboygan. I was the secretary for Friends of the Cheboygan Area Public Library and, currently, I'm a volunteer Trustee at the Cheboygan County Humane Society.

I am interested in a Director position because I want to be a part of the decisions that affect the future of our communities. As a member, I understand what it is like to lose power and the frustrations. I can bring insight to the meetings. I believe more importantly that changes can be made to ensure positive actions.

MONTMORENCY DISTRICT



Donald Edwards
Atlanta

I would very much like to be your representative on the PIE&G Board of Directors. I have devoted my life to public service and my experiences include: U.S. Army (military police) 1972–1973, Michigan Army National Guard (over 20 years), Montmorency County Sheriff Dept. (over 37 years, eight years as sheriff), Atlanta School Board (eight years, six years as president), and Montmorency County Commissioner District 2: Briley Township.

I'm also a member of the American Legion, Fraternal Order of Eagles, Atlanta Lions Club, Atlanta Masonic Lodge (past master) and the Fraternal Order of Police. I have worked with large budgets in many of my positions, including my present position as a county commissioner. It would be my privilege and honor to be your next representative. Thank you.



**Daryl Peterson
Hillman**

Thank you for your past trust in your vote over my last three terms. I have served the co-op with sound and fair decisions throughout. If you vote again for me, I will study each topic under consideration and make judgments fair to all members. My business, political, and teaching careers have helped me to make those decisions. I will continue to strive for fair rates, financial stability, and dependability for your gas and electric service. I appreciate, once again, your vote for me to continue my conservative approach to moving our co-op forward.

Please remember that you can vote in all three districts for a candidate.



Curtis Render
Lewiston

My wife, Nancy, and I moved from the Detroit area to Lewiston in 1967, where we were blessed with four children. We were partners in the Redwood Steak House & Motor Inn. We resided in Lewiston for 13 years until we sold the Redwood and moved to Traverse City. We returned to Lewiston five years ago and plan on making Lewiston our retirement home.

I am the owner of Render & Associates Land Services, specializing in the leasing of oil and gas mineral rights and easements for wind energy projects.

I was a PIE&G Board member, prior to moving to Traverse City, and was replaced by my father who served 15 years as a board member.

My background and work history provide me the necessary skills to represent Presque Isle Electric & Gas Board of Directors and the Montmorency District.

Don't miss your co-op's

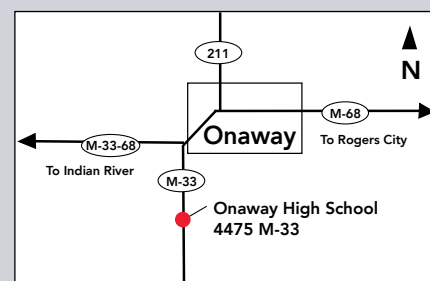
2018 Annual Meeting

Onaway High School
Friday, Oct. 26
10 a.m.

*Registration starts
at 8:30 a.m.*

Lunch is provided

See you there!



*Just like you, these candidates
are member-owners of the co-op.*

Your vote is important!

\$100
prize drawing for
voting by mail, with
an additional \$50 if
you are present at
the meeting!

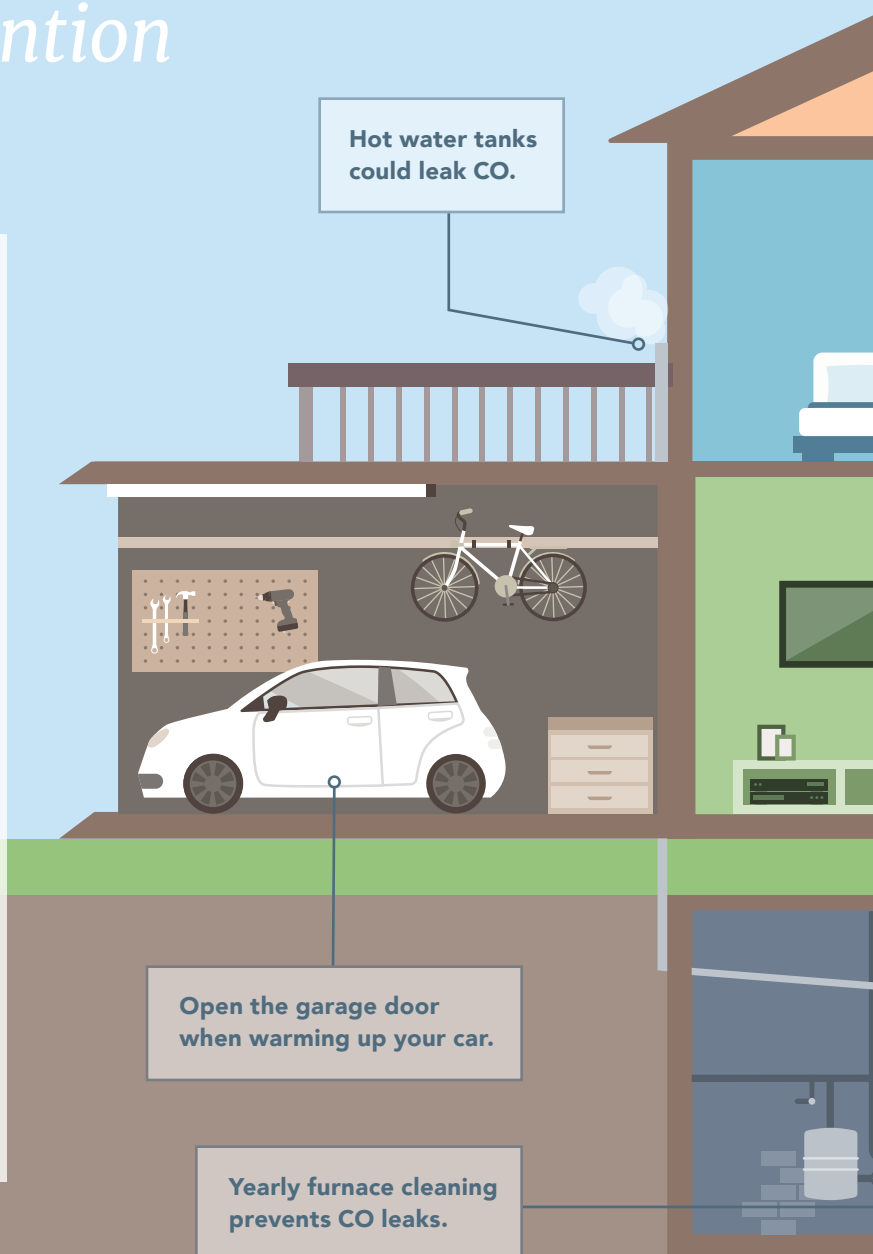
**See the back cover of this
magazine and the ballot
cover wrap for voting details.**

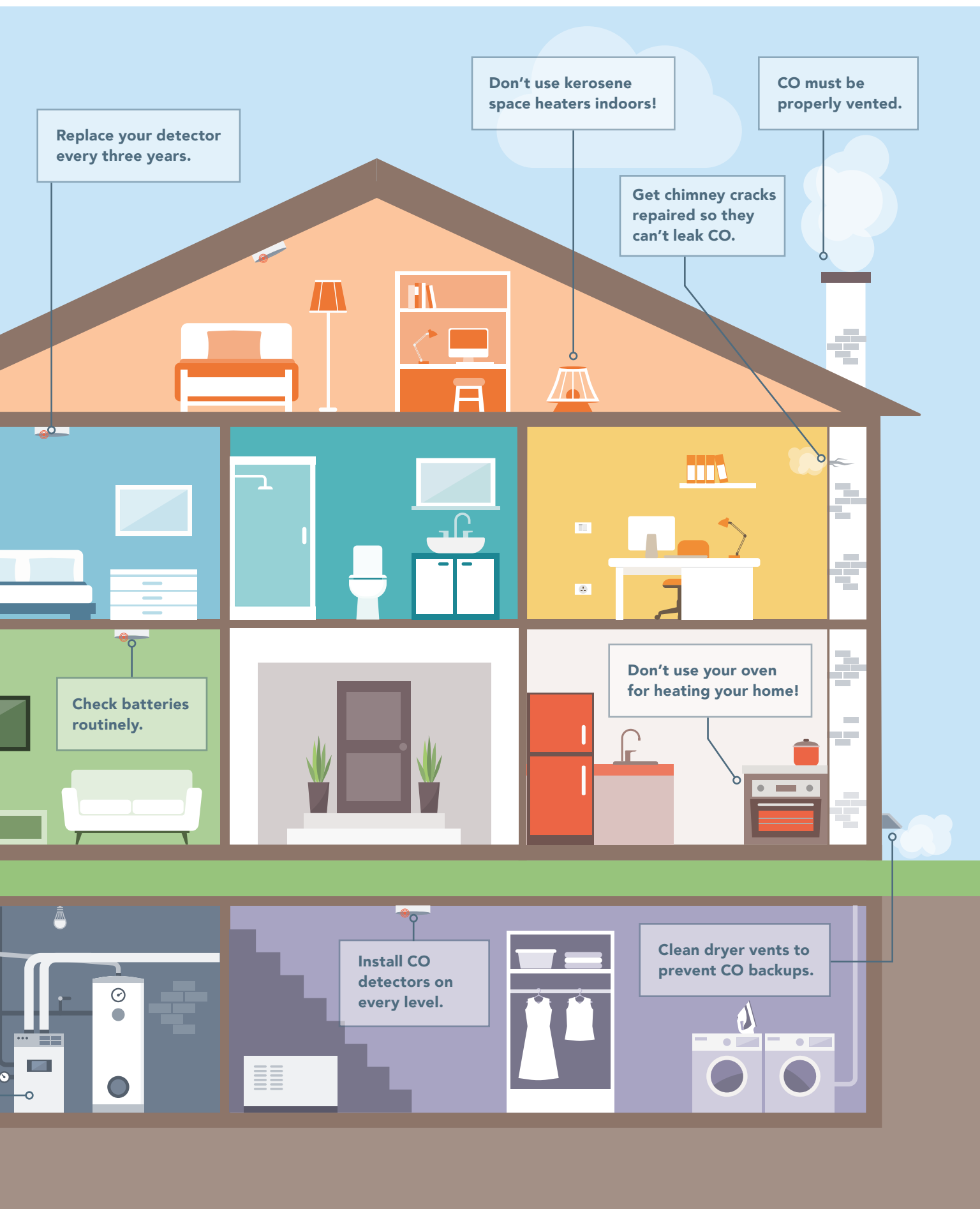
CARBON MONOXIDE

Causes and Prevention

CARBON MONOXIDE FACTS

- CO poisoning is responsible for 20,000 ER visits every year.
- ER visits for CO poisoning are highest in the midwestern states.
- CO is a colorless, odorless gas which makes it more dangerous since it is invisible to the senses.
- Symptoms of CO poisoning include: nausea, vomiting, headache, dizziness, confusion, chest pain, and decreased level of consciousness.
- Children are more vulnerable to the poisonous effects of CO.





MEET YOUR CANDIDATES!

(Continued from page 5)

DIRECTOR AT-LARGE



Michael Grohowski
Presque Isle

My wife, Joan, and I are lifelong residents of Presque Isle County and have been co-op members for 45 years. As a retired masonry contractor, I have the time, commitment, and skills to offer the Presque Isle Electric & Gas Co-op Board, serving as an At-Large District Director.

Presently, I am the Supervisor of Krakow Township. I serve on the Rogers City Ambulance Board, which serves 12 Townships, and I'm the president of the Presque Isle County Township Officers Association. I am a former Presque Isle County Commissioner, Presque Isle County Building Inspector and Zoning Administrator.

The above roles have provided me with both knowledge and experience in budget preparation, budget management, project management, and strong verbal communication skills that will enable me to take an active part on the Presque Isle Electric & Gas Co-op Board.



Sally Knopf
Rogers City

I live with my husband, Eldon, in Rogers City. We own a Centennial Farm and have been members of the co-op for over 50 years.

I was elected to the PIE&G Board of Directors in 1990 and served until 2008. I served as board secretary for 16 years. I was elected as Director At-Large in 2009. I have also previously served as Director on each of the boards of Wolverine Power Supply Cooperative and Rural Electric Supply Cooperative (RESCO).

As a Director, I participated in the education programs and attained qualification as a Certified and Credentialed Director and Board Leadership and attained the NRECA Director Gold status.

The current issues facing the co-op today cover a wide variety of topics and it takes time and experience to understand the workings of the energy industry. I feel strongly that reliable and affordable energy now and for the future is very important.

I would like to serve the members of PIE&G again and would appreciate your vote.



Peter Redmond
Cheboygan

I'm a lifelong resident of Cheboygan County and currently reside in Benton Township. My wife, Christine, and I have been married for 48 years and we have two grown children and one grandchild. I'm a member of the Cheboygan County Waterways Commission and the Fraternal Order of Eagles #1282 of Cheboygan.

I retired from Cheboygan Area Schools after 32 years of service. While living in the city of Cheboygan I became a certified firefighter and served on the department for 16 years. I was elected as a Cheboygan County Commissioner and served in that capacity for 14 years.

I care about my community and northeast Michigan. I enjoy public service. I have worked with large budgets in many of my positions. It would be my privilege to be your representative.



David Wagner
Lewiston

I reside in Lewiston and currently serve as vice chair of the Montmorency County Commission. In this position, I serve on the Sheriff's Committee along with the EDC, EDA, Personnel, and Landfill Committees. Before being appointed to the Montmorency County Commission, I was elected as the Independence Township Supervisor for two terms.

I also previously served our country, for two tours of duty, in the United States Army as a heavy track technician and extraction specialist. I am the proud father of three daughters, one son, and five grandchildren, who all love spending time on West Twin Lake in Lewiston.

Notice to Members of Presque Isle Electric & Gas Co-op

A special board meeting is set for September 25 at 9 a.m. at the cooperative's Onaway office

The board of directors will consider changes to the cooperative's rates and tariffs at its meeting on September 25, 2018, to be held at 19831 M68 Highway, Onaway, Michigan. The meeting will start at 9 a.m. and is open to all members of Presque Isle Electric & Gas Co-op.

The session will begin with an opportunity for members to provide direct input to the board of directors. Time constraints on each member's comments will be at the discretion of the board chairman, but members are asked to keep comments to less than five minutes.

- The board will establish the 2019 Power Supply Cost Recovery Factor, to be applied to the cooperative's retail member-consumers' kilowatt-hour use. The Power Supply Cost Recovery Factor represents the power supply costs as established by the cooperative in conjunction with Wolverine Power Cooperative. The factor is established annually and reviewed monthly.
- The board will also consider revisions to the Buy All/Sell All Tariff D-22.00, and Consumer Standards and Billing Practices for Electric and Gas Residential and Non-Residential Service.

Notices of changes or additions to the cooperative's rates or service rules shall be sent to all members, as required by P.A. 167, by first class mail or by publication in *Michigan Country Lines* at least 30 days prior to their effective date.

Participation: Any interested member may attend and participate. Persons needing any accommodation to participate should contact Presque Isle Electric & Gas Co-op at 800-423-6634 a week in advance to request mobility, visual, hearing or other assistance. Comments may also be made before the meeting date by calling CEO Thomas Sobeck at 800-423-6634, or by email at tsobeck@pieg.com.

Notice to Members of Presque Isle Electric & Gas Cooperative

Case No. U-16596 2017 Renewable Energy Plan Annual Report Summary

Michigan law requires all Michigan electric utilities to get approximately two percent of their power supply from renewable sources by 2012 and increasing to 10 percent by 2015.

Under this requirement, Presque Isle Electric & Gas Cooperative submits an Annual Report to the MPSC regarding its Renewable Energy Plan. In 2017, Presque Isle acquired a total of 40,119 renewable energy credits and 605 incentive credits. All credit transfers were directed through Presque Isle's wholesale power supplier, Wolverine Power Supply Cooperative, Inc. Wolverine will continue to generate renewable energy and bank unused renewable energy credits for future use and compliance with statutory renewable portfolio standard requirements on behalf of all of its members.

A full copy of the cooperative's Renewable Energy Plan Annual Report that was filed with the MPSC is available on the cooperative's website at pieg.com or by request at any of the cooperative's offices.

Public Act 295 as amended by Public Act 342: The Clean Renewable and Efficient Energy Act

2017 Annual Energy Waste Reduction Report Presque Isle Electric & Gas Co-op MPSC Case Number U-18278

During 2017, Presque Isle Electric & Gas Co-op administered its Energy Waste Reduction (EWR) plan through the Michigan Electric Cooperative Collaborative in order to comply with PA-295. Previously, Presque Isle, through the Collaborative, submitted its EWR plan with the MPSC. This EWR plan was approved by the MPSC. The collaborative implemented the EWR Plan in 2017.

Overall, Presque Isle achieved a goal at approximately 125 percent savings. The full report can be obtained at your cooperative's headquarters.



Cocktails And Drinks

Shake things up with these easy-to-make, boozy drinks.

Photos—Robert Bruce Photography

Mexican Sangria (pictured)

Mindy Aves, HomeWorks Tri-County

- 1 cup lime juice
- 1 cup sugar
- 2 bottles White Zinfandel wine
- 2 cups fresh orange juice
- ½ cup triple sec
- ½ cup tequila
- 2 cups frozen, seedless grapes (red, green, and purple)
- 2 cups sliced oranges or nectarines
- 1 cup sliced limes

Mix lime juice and sugar. Add wine, orange juice, triple sec and tequila. Chill until cold. Add fruit (may not need as much as called for.)



Watch a video of this recipe at
micoopkitchen.com/videos



French Blonde

Jan Updike, Cherryland

- 1 cup ruby red grapefruit juice
- 1 cup Lillet Blanc (available at larger liquor or wine stores)
- ½ cup gin (or less to make it less alcoholic)
- ¼ cup St. Germain elderflower liqueur
- 4 dashes of lime or lemon bitters
- garnish with a slice of grapefruit or another citrus

Mix all ingredients in a suitably sized pitcher. Chill if needed. Serve in a martini glass. Garnish with a slice of grapefruit or another citrus. Makes approximately 3–4 drinks.

Celery Sipper

Jodi Moelker, Great Lakes Energy

- 2 cups chopped celery, including leaves
- 1½ cups sugar
- 1 cup water
- 1 tablespoon celery seeds

In a medium bowl, stir together the chopped celery, sugar, water and celery seeds. Let stand, stirring occasionally until sugar dissolves. Chill, covered, 8 hours or overnight. Strain through a fine-mesh sieve. Transfer syrup to a lidded jar or bottle and store in the refrigerator for up to two weeks.

For an alcoholic version, throw in an ounce or two of gin. For a non-alcoholic version, use celery sipper liquid to flavor soda water, adding a squeeze of lemon if desired. Serve immediately and enjoy!



Fisherman's Punch

Arline Welty, Ontonagon REA

- 1 30-ounce bottle of 100% pure peach juice (no added sugar)
- 1 bottle (750 mL) dark rum
- 1 1-pint bottle (375 mL) brandy
- 5 ounces freshly squeezed lime juice
- 5 ounces freshly squeezed lemon juice

Punch: Chill the peach juice, rum and brandy. Squeeze limes and lemons. Pour all ingredients into a large plastic or non-reactive jug. Stir well to combine. Cover and place jug in the refrigerator to chill, at least 4 hours. If serving in a punch bowl, pour into a bowl over a large block of ice. Garnish with lime or lemon slices.

Ice Block (Optional): Wash and dry a rectangular cardboard milk carton. Cut off the top to create a rectangular mold. Pour filtered water to fill to 25 percent and add thinly sliced limes on top. Let freeze, and repeat process of adding water and limes, and freezing. This creates a block of ice with limes throughout, which looks nice in the punch bowl.



Holiday Favorites: due October 1
Pasta Perfect: due November 1

Submit your favorite recipe for a chance to win a \$50 bill credit and have your recipe featured in *Country Lines*.

Go to micoopkitchen.com for more information and to register.

Enter to win a
\$50
energy bill
credit!

FEATURED GUEST CHEF

Enjoy this creative cocktail from Iron Fish Distillery. Their true passion is to offer customers the craft of soil-to-spirit distilling from a family business that cares about their employees, community and the living land. Every step of the process—from growing and harvesting non-GMO grain to cultivating native yeast, milling, mashing, fermenting, distilling, aging, and bottling—is done by hand at their distillery. Cheers!



Salted Maple Old Fashioned

- **Glass:** Rocks
- ½ Bar Spoon (¼ ounce) of maple syrup
- 2-3 dashes of aromatic bitters
- 2 ounces maple bourbon
- **Garnish:** 5 salt flakes and an orange twist

Build ingredients in glass, combine with ice, and stir until chilled. This drink also tastes great with Iron Fish Experimental Barrel Finished Gin!

Bourbon Whiskey Finished In Maple Syrup Barrels

Bourbon Whiskey: Iron Fish Distillery has some delicious local maple syrup, from the Griner Family Sugar Bush, that was aged in used whiskey barrels for months. Those whiskey barrels were then filled with a high rye bourbon and left to marry, resulting in a subtly sweet and deep flavor.

Black Label Bourbon: As the leaves began to fall, and while waiting for their own Iron Fish distilled whiskey to reach its prime, distillery staff came upon this spirit—a blend of corn, rye and malted barley in fired American oak barrels. The staff fell for it and gave it a trace of maple by finishing the spirit in aged whiskey barrels steeped in maple syrup. Settle in and enjoy this unique, thoughtful and distinct Bourbon—the beauty is in the contrast.

Both the Bourbon Whiskey and the Black Label Bourbon are available for purchase at Iron Fish Distillery.

Read the full story about Iron Fish Distillery, on page 14, and find this recipe and others at micoopkitchen.com.

Your Co-op's 2017 Annual Report



John Brown
Chairman



Tom Sobeck
CEO

To Our Member-Owners:

We are pleased to report that 2017 was another favorable year for your cooperative. Both our natural gas and electric operations continue to provide positive margins. Our electric and natural gas operating margins were such that no change in distribution rates was necessary for this year. Our electric members continue to benefit from positive margins and the board of director's commitment to the cooperative business model as we will again this year return patronage capital to you.

This year the cooperative will return approximately \$2,392,000 in the form of patronage capital retirements to the membership.

In keeping with our mission, we continue to invest in and rehabilitate the infrastructure that delivers energy to you. In 2017, our total utility plant investments exceeded \$3.3 million.

On behalf of the board and our employees, we thank you for your trust and support. We are pleased to have the opportunity to serve you.

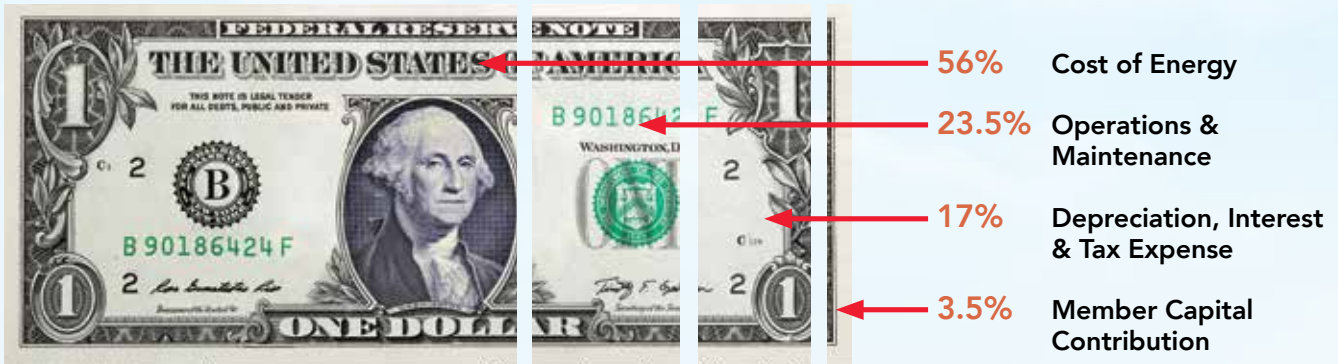
Respectfully,

John Brown
Chairman of the Board

Tom Sobeck
President & Chief Executive Officer



Where Your Energy Dollar Goes:



2017 Statistical Summary:

	ELECTRIC	NATURAL GAS
Active Meters	33,468	9,405
Energy Sold	236,535,693 kWh	7,170,458 CCF
New Services	213	129
Miles of Line	3,838 (overhead) 1,051 (underground)	593

Treasurer's Report



Daryl Peterson

Presque Isle Electric and Gas Co-op's Statement of Operations and Balance Sheet for the past two years (2016–2017) are included in this Annual Report. As indicated by these financial reports, the cooperative has completed another successful year of operation in the gas and electric operations.

Our independent auditor, Harris Group, has confirmed that the financial statements and records presented to them accurately reflect the financial position of the cooperative. The reports of the results of our operations are in conformity with generally accepted accounting principles.

It has been my pleasure to serve as treasurer over the last nine years.

Daryl Peterson, Treasurer

Statement of Operations

	2016	2017
OPERATING REVENUES	\$43,134,964	\$42,909,614
OPERATING EXPENSES		
Cost of Purchased Power	24,382,270	24,003,855
Operations & Maintenance Expense	10,196,423	10,006,233
Depreciation	3,679,291	3,748,845
Interest	2,443,147	2,464,041
Taxes	1,124,918	1,138,899
Total Operating Expenses	<u>41,826,049</u>	<u>41,361,873</u>
Member Capital Contribution	1,308,915	1,547,741
NON-OPERATING MARGINS		
Capital Credits—G&T and Other	2,166,013	1,612,186
Non-Operating Margins - Other	(181,406)	(14,374)
NET MARGINS	3,293,522	3,145,553

Balance Sheet

ASSETS		
Total Utility Plant	136,969,890	140,272,009
Accumulated Depreciation	(60,747,421)	(63,737,119)
Net Utility Plant	76,222,469	76,534,890
Investments in Associated Organizations	24,733,009	24,644,319
Cash & Cash Equivalents	3,494,617	2,971,080
Accounts Receivable	4,645,457	4,648,383
Materials & Supplies	1,508,895	1,460,638
Other Assets	397,673	347,401
Deferred Debits	221,083	236,795
Total Assets	111,223,203	110,843,506
EQUITIES & LIABILITIES		
Margins & Equities		
Patronage Capital	52,470,101	53,531,597
Other Equities	(1,319,079)	(\$253,082)
Total Margins & Equities	51,151,022	53,278,515
Liabilities		
Long Term Debt	50,609,285	48,874,610
Notes Payable	0	0
Accounts Payable	9,136,001	8,661,137
Other Current & Accrued Liabilities	326,895	29,244
Total Liabilities	<u>60,072,181</u>	<u>57,564,991</u>
TOTAL EQUITIES & LIABILITIES	111,223,203	110,843,506



BRINGING SPIRITS HOME

Iron Fish Distillery Embraces Its Roots

By
Rob
Marsh

Every year Great Lakes steelhead return to their home in the Betsie River, running inland throughout northwest Michigan. Like these tenacious fish, the proprietors of Cherryland member Iron Fish Distillery in Thompsonville are returning the heritage of farm-distilled spirits back to the region.

Iron Fish is the only small-batch farm distillery in Michigan, but they are far from the first. "This area has a history of distilling small-batch spirits," said Richard Anderson, co-owner of Iron Fish. "Before Prohibition, there were plenty of people in this area distilling their own spirits on their farms."

These farms were a memory for Anderson's wife, Sarah, and her sister, Heidi, when they were young, spending their

summers visiting family in Benzonia. Heidi and her husband, David, later bought a seasonal home on the Betsie River, near the 120-acre farm that would later become the home of Iron Fish.

"It was a second-generation family farm that had been abandoned for a decade or so," said Anderson. "David and Heidi bought the land to save the farmhouse and barn and preserve the farm from being parceled up and sold."

While they enjoyed spirits, Anderson and his family didn't have plans to start a second career, let alone open a distillery on the property. It took a birthday trip to Scotland to give them the push they needed. "Touring distilleries in Islay, Scotland, we came across a farm distillery which really fed our passion for returning to northern Michigan to start our own farm distillery. That was when we began to take this idea that we could distill spirits seriously."

Within three years of returning from Scotland, Iron Fish became a reality.

From the beginning, Anderson quickly realized that they were doing something special. "Last year over Labor Day weekend, we just opened our doors. We didn't have the time to do a soft opening," said Anderson. "And within days of opening the tasting room, we sold out of our vodka!"

To date, Iron Fish has won over 10 national awards for their spirits, become the vodka provider for premium seating at Ford Field in Detroit, and started distributing their products to over 600 Michigan locations and throughout Chicago, Illinois. "It's going better than we thought," chuckled Anderson.

Iron Fish embraces their roots and takes full advantage of their farm's natural resources, using the property's grain for distilling spirits, growing their own cocktail garnishes in a bartender's garden, and supplying mash as cattle feed for local farmers. "We are a full ecosystem here. It's been our commitment to create a sustainable, working landscape."

This commitment to the land extends to their neighbors as well. In addition to hosting community and charitable events, Iron Fish partners with local farms and uses their products in Iron Fish spirits. "When someone drinks our white rum, they taste honey from Sleeping Bear Farms. And when someone drinks our gin, they taste sprigs of Concolor Fir from Antioch Tree Farm. We are perfecting the craft and art of distilling while giving back to our community."

Like the schools of steelhead working their way up the river, the people at Iron Fish Distillery are determined to continue the northwest Michigan tradition of distilling. All the while, they are supporting the land and the community who depends on it. 🐟



Iron Fish's four family partners, staff, and distribution representative gather to see their first pallet of spirits placed into statewide distribution. Iron Fish spirits can be found in over 600 Michigan locations as well as throughout Chicago, Illinois.



For more information about Iron Fish Distillery and to access a special coupon code for a tour of the facility, visit ironfishdistillery.com.

The coupon code is good for 50 percent off the cost of a tour through 2018, normally \$10. Enter CODE: **MCL2018** on the "Tour" tab of their website and complete the registration, by selecting the date, time and number of people.

Visit ironfishdistillery.com to book a tour.



Visit countrylines.com to learn more about Iron Fish Distillery and the craft beverage scene in Michigan on a special episode of the Co-op Energy Talk podcast, hosted by Cherryland Electric Cooperative.



SUBMIT A NOMINATION TODAY!

Michigan Country Lines is on the hunt for entrepreneurial movers and shakers to showcase in our March 2019 magazine. We know co-op members are awesome and there is no shortage of pioneers, innovators and leaders in our service territory. Featured entrepreneurial endeavors can be small start-ups, large operations or anything in between.

If you know a friend, neighbor or coworker we should consider, nominate them by December 31 at countrylines.com.

Self-nominations are accepted.

SAVE ON HEATING COSTS

Want to reduce energy use, save money, and enjoy a more comfortable home? CASH INCENTIVES are available now to help you invest in equipment upgrades:

- High-efficiency furnace
- ECM blower motor
- Air-source or ground-source heat pump
- Smart thermostat
- ...and more!

VIEW ALL INCENTIVE OFFERS ONLINE!

ONLINE: michigan-energy.org

PHONE: 877.296.4319



Energy
Optimization



Energy Optimization programs and incentives are applicable to Michigan electric service locations only. Other restrictions may apply. For a complete list of participating utilities, visit michigan-energy.org.

get
cozy



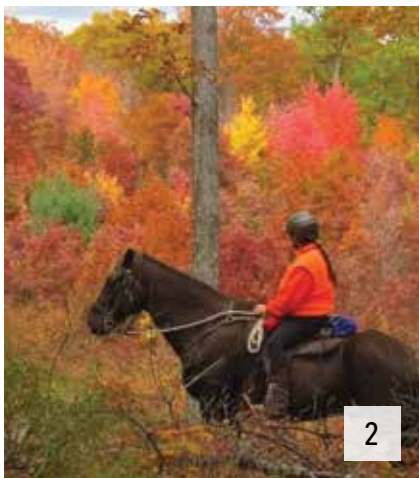
Photo Contest

Fall Colors

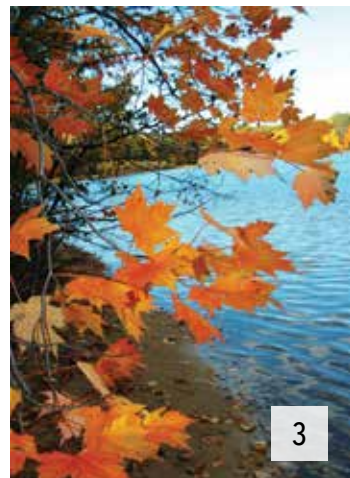
1. Enjoying fall colors in Afton. *By Judith Jewell*
2. Horseback riding in Montmorency County. *By Heide MacDonald*
3. Color on the Tee Lake, Lewiston. *By Robert Batzloff*
4. The fall splendor of I-75, just north of Indian River.
By LoriJune Houle-Pascador
5. Fall colors in Rogers City. *By Sandra Adair*
6. Our dog, Murphy, blends into the fall colors at Little Brush Lake.
By Kathy Sabel
7. It's amazing, the detail and intricacies a simple leaf can have. While capturing the fall landscape, this one leaf fell before me and I realized I was missing the beauty right at my feet. I turned my camera downward to capture an image of fall that was much more intimate and near and dear. *By Mike Lavens*



1



2



3



4



6



5



7

Submit Your "Celebrations" Photos!

Presque Isle Electric & Gas Co-op invites members to share their amazing photos. Selected photos will be published in *Michigan Country Lines*.

Upcoming topics and deadlines are:

- **Celebrations due September 20** for the November/December issue
- **Cutest Kids due October 20** for the January/February 2019 issue

To submit photos, and for details and instructions, go to

<http://bit.ly/countrylines>

We look forward to seeing your best photos!

Guess this photo and enter to win a \$50 energy bill credit!



Where In Michigan Is This?

Identify the correct location of the photo above by September 20 and be entered into a drawing to win a \$50 electric bill credit. Enter your guess at countrylines.com or send by mail to: *Country Lines* Mystery Photo, 201 Townsend St., Suite 900, Lansing, MI 48933. Include the name on your account, address, phone number and the name of your co-op.

Our Mystery Photo Contest winner from the July/August 2018 issue is Kevin Dubord, an Alger Delta Cooperative member, who correctly identified the photo as the Shrine of Bishop Frederick Baraga. He was also known as the Snowshoe Priest who became the first Bishop of the Upper Peninsula and the Apostle of the Great Lakes.

Winners are announced in the following issues of *Country Lines*: January, March, May, July/August, September and November/December.

July/August 2018



Best Cider Mills

Between the cider, doughnuts, hayrides and corn mazes, cider mills provide a great day out for families. Enjoy a perfect fall day at one of these awesome cider mills recommended by your fellow co-op members.



1 Phillips Orchards & Cider Mill, St. Johns

Phillips Orchards & Cider Mill has the best cider, donuts, Michigan gifts and paintings. It's just about the neatest place to go. —*Marilyn Fitzpatrick, HomeWorks Tri-County*

2 VerHage Fruit Farms & Cider Mill, Kalamazoo

VerHage Fruit Farms & Cider Mill is by far THE BEST cider I have ever tasted! There are no preservatives and nothing added except real apples and sometimes other fall fruit. They also have homemade doughnuts, pick your own apples, shopping, music, hayrides, a zip line and more fun for kids at nominal prices. If you haven't been to VerHage Cider Fruit Farms & Cider Mill farm you need to go there! If you have...you already know what I'm talking about...They are open from the spring with all kinds of fruit and fresh baked goods through the holidays in December. —*Sue Gottlieb, Midwest Energy & Communications*

3 Klackle Orchards, Greenville

Klackle Orchards has something for everyone. You will not be disappointed by making a trip to Klackle! The donuts and cider are to die for. —*Shelly Dunn, Great Lakes Energy*

4 Friske Orchard & Farm Market, Ellsworth

Friske Orchard & Farm Market is a bushel of fun! Families love the outdoor orchard playland and the animal petting zoo, self-guided nature walk, you-pick fruit and festive events—many of which include live music and wagon rides! They also have homemade doughnuts and pies, a fruit stand, Michigan products and so much more! —*Walter Dorr, Presque Isle Electric & Gas*

5 Knaebe's Mmmunchy Krunchy Apple Farm & Cider Mill, Rogers City

Knaebe's Mmmunchy Krunchy Apple Farm & Cider Mill is as unique as its name. It's a great place to indulge in all things fall! Plus, [cider mill goers can find] great wood-fired pizza and craft hard cider. —*Gerry Baller, Presque Isle Electric & Gas*



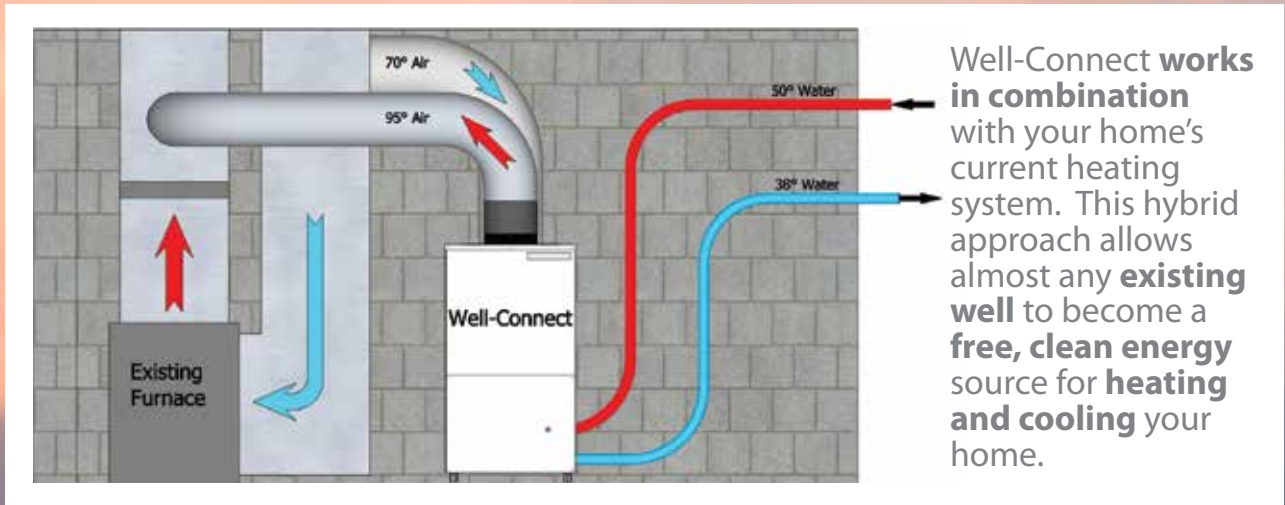
Best of Michigan

Up Next: Share your favorite Michigan snowmobile trails. Help your fellow readers explore some new places this winter. We will publish these trails in our Nov/Dec issue.

Submit your favorites at countrylines.com under the MI Co-op Community tab by October 1.

Making Rural Home Heating Affordable

1 Well at a Time



call for a free home site visit



wellCONNECT Hybrid Geothermal

Add a Well Connect in hours. Heat for half for decades.

989-356-2113 wellconnectsaves.com



pieg.com

STATE OF MICHIGAN BEFORE THE MICHIGAN PUBLIC SERVICE COMMISSION

NOTICE OF HEARING FOR THE REGULATED NATURAL GAS DIVISION CUSTOMERS OF PRESQUE ISLE ELECTRIC & GAS CO-OP CASE NO. U-20080

- Presque Isle Electric & Gas Co-op (Presque Isle) requests Michigan Public Service Commission (Commission) approval to reconcile its gas cost recovery (GCR) costs and revenues for the 12-month period ended March 31, 2018, for its Regulated Gas Division. The reported cumulative over-collection is \$206,074. Presque Isle rolled-in this over-collection through the GCR Plan authorized by the Commission in Case No. U-18489.
- The information below describes how a person may participate in this case.
- You may call or write Presque Isle Electric & Gas Co-op, 19831 M-68 Highway, P.O. Box 308, Onaway, Michigan 49765, 800-423-6634 for a free copy of its application. Any person may review the application at the offices of Presque Isle Electric & Gas Coop.
- The first public hearing in this matter will be held:

DATE/TIME: Wednesday, October 10, 2018, at 9:00 a.m.

This hearing will be a prehearing conference to set future hearing dates and decide other procedural matters.

BEFORE: Administrative Law Judge Suzanne Sonneborn

LOCATION: Michigan Public Service Commission 7109 West Saginaw Highway, Lansing, Michigan

PARTICIPATION: Any interested person may attend and participate. The hearing site is accessible, including handicapped parking. Persons needing any accommodation to participate should contact the Commission's Executive Secretary at 517-284-8090 in advance to request mobility, visual, hearing or other assistance.

The Commission will hold a public hearing to consider Presque Isle's June 28, 2018, application to reconcile its 2017/2018 GCR costs and revenues for the 12-month period ended March 31, 2018, for its regulated natural gas division. Presque Isle represents that the company experienced a cumulative over collection (gas revenues exceeded gas costs) of 206,074. Presque Isle states that it rolled-in the over collection in its GCR plan, authorized by the Commission in Case No. U-18489.

All documents filed in this case shall be submitted electronically through the Commission's E-Dockets website at: michigan.gov/mpscdockets. Requirements and instructions for filing can be found in the User Manual on the E-Dockets help page. Documents may also be submitted, in Word or PDF format, as an attachment to an email sent to: mpscdockets@michigan.gov. If you require assistance prior to e-filing, contact Commission staff at (517) 284-8090 or by email at: mpscdockets@michigan.gov.

Any person wishing to intervene and become a party to the case shall electronically file a petition to intervene with this Commission by October 3, 2018. (Interested persons may elect to file using the traditional paper format.) The proof of service shall indicate service upon Presque Isle's attorney, Richard Aaron, Dykema Gossett PLLC, Capitol View, 201 Townsend Street, Suite 900, Lansing, Michigan 48933.

Any person wishing to appear at the hearing to make a statement of position without becoming a party to the case may participate by filing an appearance. To file an appearance, the individual must attend the hearing and advise the presiding administrative law judge of his or her wish to make a statement of position. All information submitted to the Commission in this matter becomes public information, thus available on the Michigan Public Service Commission's website, and subject to disclosure. Please do not include information you wish to remain private.

Requests for adjournment must be made pursuant to the Michigan Administrative Hearing System's Administrative Hearing Rules R 792.10422 and R 792.10432. Requests for further information on adjournment should be directed to 517-284-8130.

A copy of the Presque Isle's request may be reviewed on the Commission's website at: michigan.gov/mpscdockets, and at the office of Presque Isle Electric & Gas Co-op. For more information on how to participate in a case, you may contact the Commission at the above address or by telephone at 517-284-8090.

Jurisdiction is pursuant to 1909 PA 300, as amended, MCL 462.2 et seq.; 1919 PA 419, as amended, MCL 460.54 et seq.; 1939 PA 3, as amended, MCL 460.1 et seq.; 1969 PA 306, as amended, MCL 24.201 et seq.; 1982 PA 304, as amended, MCL 460.6h et seq.; and the Michigan Administrative Hearing System's Administrative Hearing Rules, 2015 AC, R 792.10401 et seq.